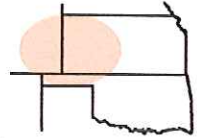


Pro-Stake LLC
Oil Field & Construction Staking

P.O. Box 2324
Garden City, Kansas 67846
Office/Fax: (620) 276-6159
Cell: (620) 272-1499



001432
PLAT NO.

12113
INVOICE NO.

burt@pro-stakellc.kscoxmail.com

Shakespeare Oil Company, Inc.

OPERATOR

Ottley #2-9

LEASE NAME

Logan County, KS

COUNTY

9 14s 32w
Sec. Twp. Rng.

Main = 1700' FSL - 1180' FEL gr. elev. = 2806.8'
Alt. #1 = 1625' FSL - 1153' FEL gr. elev. = 2808.9'
Alt. #2 = 1578' FSL - 1136' FEL gr. elev. = 2809.3'

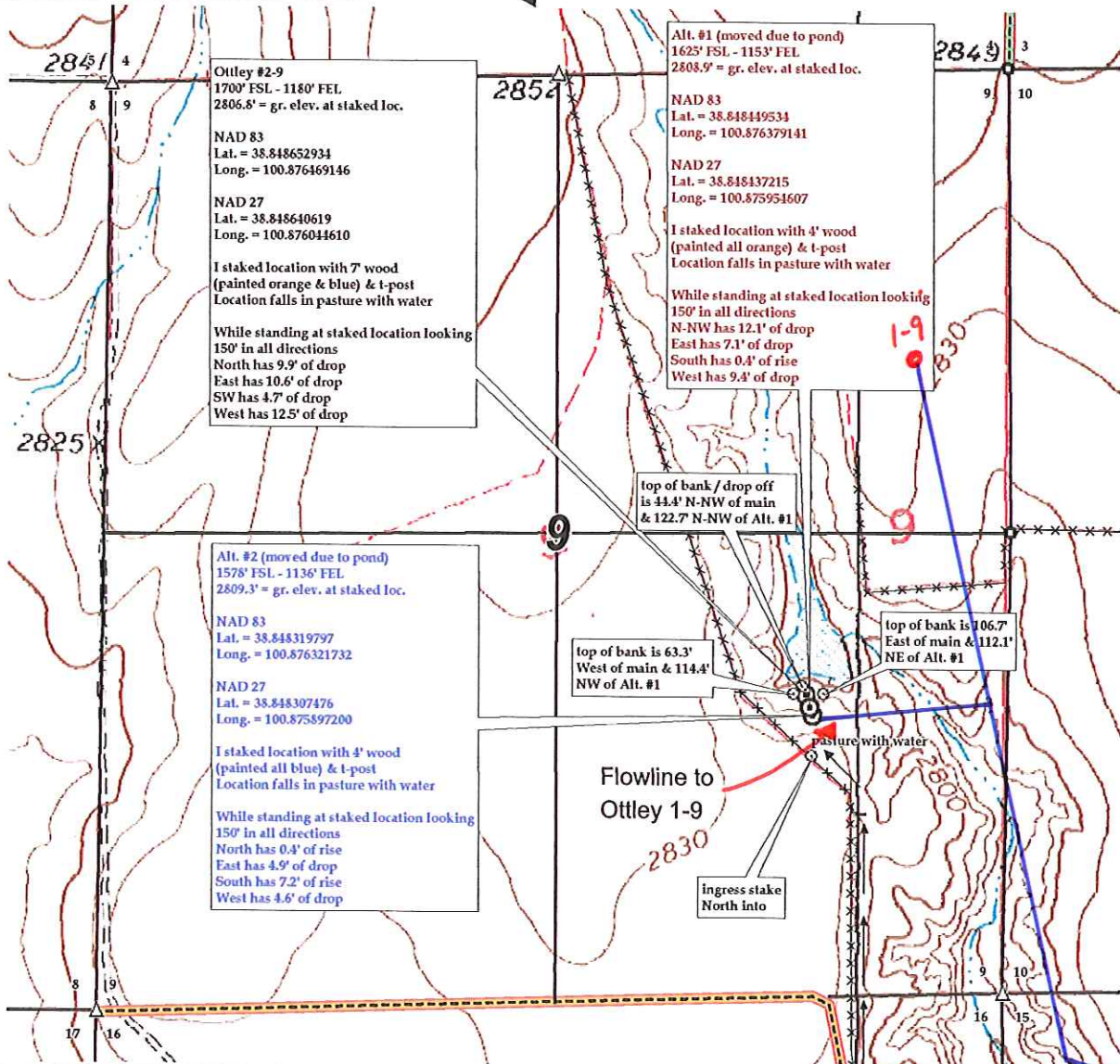
SCALE: **1" = 1000'**
DATE: **Sept. 3rd, 2014**
MEASURED BY: **Kent C.**
DRAWN BY: **Norby S.**
AUTHORIZED BY: **Alex B.**



*This drawing does not constitute a monumented survey or a land survey plat
This drawing is for construction purposes only*

Directions: From the South side of Oakley, Ks at the intersection of Hwy 40 & Hwy 83 South - Now go 19 miles South on Hwy 83 - Now go 1.3 miles SW on trail - Now go Approx. 2790' N-NW through pasture which is approx. 0.2 mile West of the SE corner of 9-14s-32w - Now go approx. 1380' North to ingress stake North into - Now go approx. 320' North through pasture into main staked location.

Final ingress must be verified with landowner or Operator.



Preliminary non-binding estimate of flowlines, roads and tanks

To tank battery