



**TRILOBITE TESTING, INC.**

# DRILL STEM TEST REPORT

Shakespeare Oil Co.

**10-16s-34w Scott co.**

202 W Main st.  
Salem, IL 62881

**Koehn #1-10**

Job Ticket: 57724

**DST#: 5**

ATTN: Tim Priest

Test Start: 2014.09.04 @ 22:32:00

## GENERAL INFORMATION:

Formation: **Myric - Ft. Scott**

Deviated: No Whipstock: ft (KB)

Time Tool Opened: 01:01:55

Time Test Ended: 04:51:39

Test Type: Conventional Bottom Hole (Reset)

Tester: Will MacLean

Unit No: 72

**Interval: 4542.00 ft (KB) To 4595.00 ft (KB) (TVD)**

Reference Elevations: 3127.00 ft (KB)

Total Depth: 4595.00 ft (KB) (TVD)

3122.00 ft (CF)

Hole Diameter: 7.88 inches Hole Condition: Good

KB to GR/CF: 5.00 ft

**Serial #: 8845**

**Inside**

Press @ Run Depth: 13.37 psig @ 4543.00 ft (KB)

Capacity: 8000.00 psig

Start Date: 2014.09.04

End Date:

2014.09.05

Last Calib.:

2014.09.05

Start Time: 22:32:00

End Time:

04:51:39

Time On Btm:

2014.09.05 @ 01:01:40

Time Off Btm:

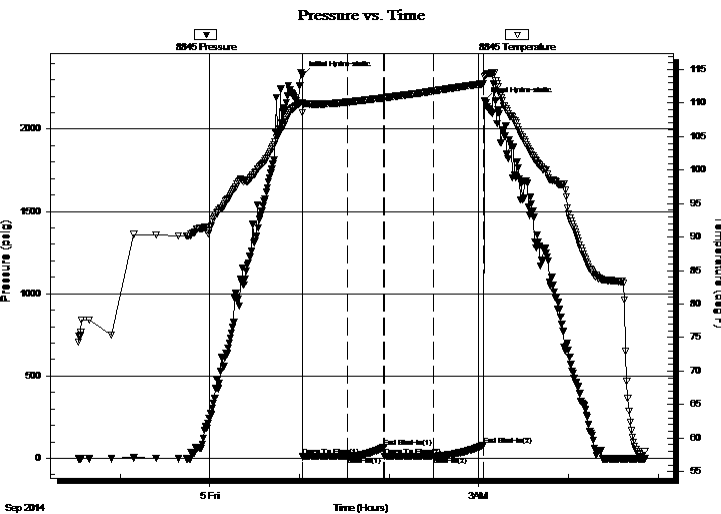
2014.09.05 @ 03:03:54

TEST COMMENT: IF- Weak Surface Blow Died in 14min

IS- No Blow

FF- No Blow

FS- No Blow



## PRESSURE SUMMARY

Time (Min.)	Pressure (psig)	Temp (deg F)	Annotation
0	2327.82	110.09	Initial Hydro-static
1	9.64	108.61	Open To Flow (1)
31	12.76	110.14	Shut-In(1)
55	68.67	110.78	End Shut-In(1)
55	12.14	110.77	Open To Flow (2)
88	13.37	111.79	Shut-In(2)
122	80.33	112.87	End Shut-In(2)
123	2170.32	113.87	Final Hydro-static

## Recovery

Length (ft)	Description	Volume (bbl)
4.00	100% m with a Couple Oil Spots in Tool	0.02

\* Recovery from multiple tests

## Gas Rates

Choke (inches)	Pressure (psig)	Gas Rate (Mcf/d)



**TRILOBITE  
TESTING, INC.**

# DRILL STEM TEST REPORT

**FLUID SUMMARY**

Shakespeare Oil Co.

**10-16s-34w Scott co.**

202 W Main st.  
Salem, IL 62881

**Koehn #1-10**

Job Ticket: 57724

**DST#: 5**

ATTN: Tim Priest

Test Start: 2014.09.04 @ 22:32:00

## Mud and Cushion Information

Mud Type: Gel Chem

Cushion Type:

Oil API:

deg API

Mud Weight: 9.00 lb/gal

Cushion Length:

ft

Water Salinity:

ppm

Viscosity: 54.00 sec/qt

Cushion Volume:

bbbl

Water Loss: 8.78 in<sup>3</sup>

Gas Cushion Type:

Resistivity: 0.00 ohm.m

Gas Cushion Pressure:

psig

Salinity: 7500.00 ppm

Filter Cake: 1.00 inches

## Recovery Information

Recovery Table

Length ft	Description	Volume bbl
4.00	100% m with a Couple Oil Spots in Tool	0.020

Total Length: 4.00 ft      Total Volume: 0.020 bbl

Num Fluid Samples: 0

Num Gas Bombs: 0

Serial #:

Laboratory Name:

Laboratory Location:

Recovery Comments:

Serial #: 8845

Inside

Shakespeare Oil Co.

Koehn #1-10

DST Test Number: 5

