

LINN OPERATING INC. ENDSLEY #4 ATU-173

235' FNL
 180' FWL
 NW/4 OF NW/4 OF NW/4 OF NW/4 OF
 SECTION 36, T-27-S, R-39-W, STANTON CO., KS.
 LATITUDE: 37°39'47.75842" N
 LONGITUDE: 101°32'37.16018" W
 GROUND ELEVATION: 3156.7'



Keller
 Surveying &
 Mapping

2730 D LAKEVIEW DRIVE
 AMARILLO, TEXAS 79109
 PH (806)418 5253

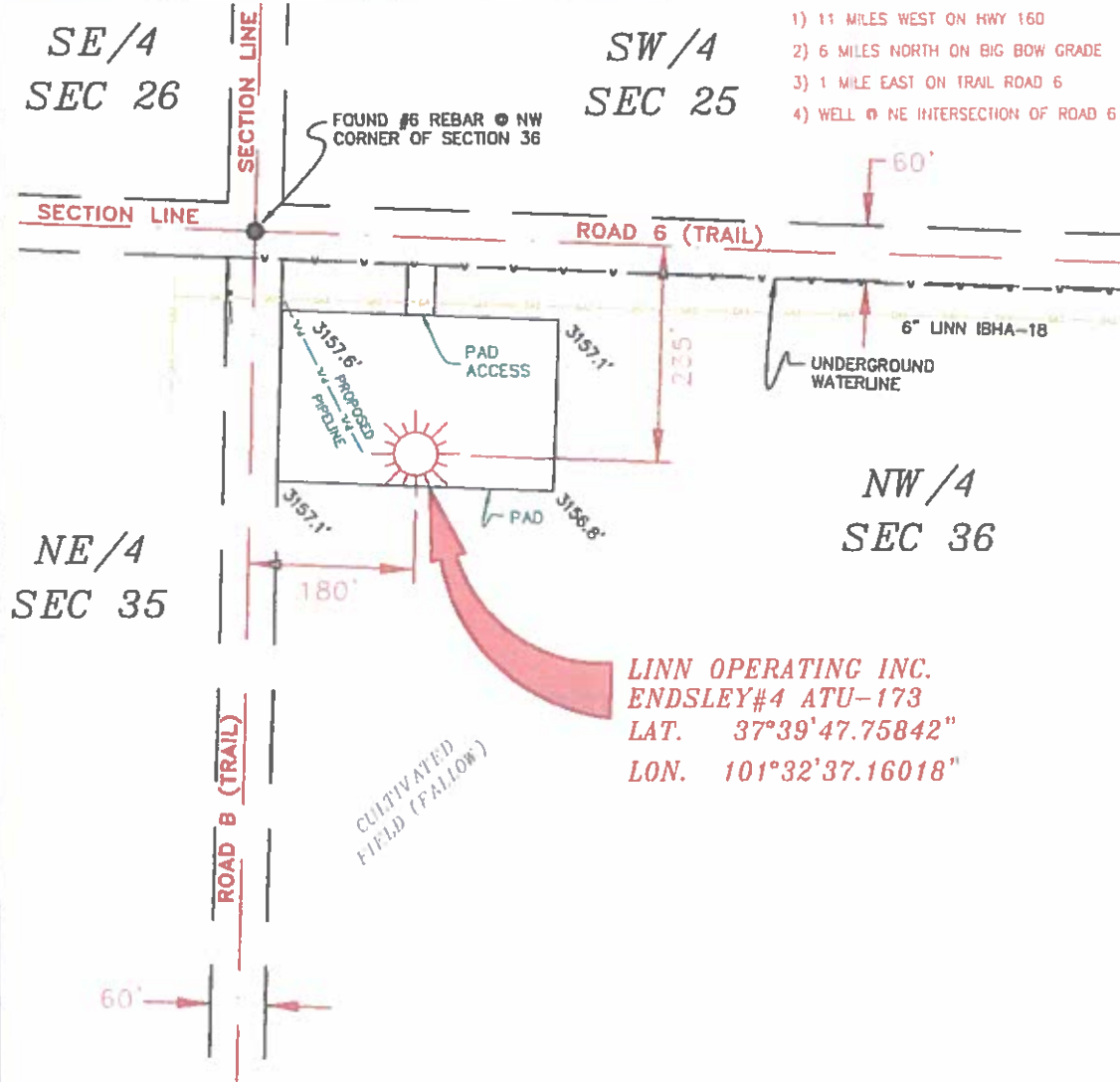
DRAWN BY DAH
 APPROVED BY JDA
 SCALE 1" = 200'
 DATE 8/12/14

LINN
 Energy

2225 W OKLAHOMA AVE
 ULYSSES KANSAS 67880
 PH (620)355-6940
 FAX (620)355-6950

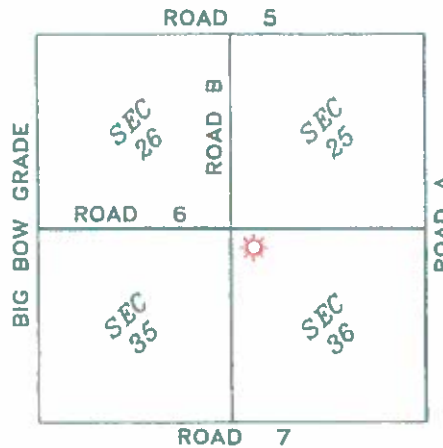
DRIVING DIRECTIONS:

- BEGINNING AT INTERSECTION OF US HWY 160 & HWY 25
- 1) 11 MILES WEST ON HWY 160
- 2) 6 MILES NORTH ON BIG BOW GRADE
- 3) 1 MILE EAST ON TRAIL ROAD 6
- 4) WELL @ NE INTERSECTION OF ROAD 6 & ROAD B



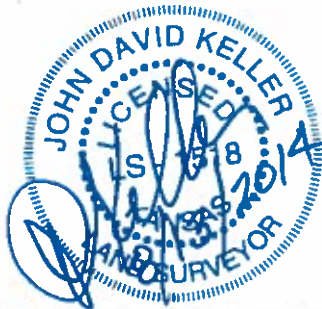
LINN OPERATING INC.
ENDSLEY#4 ATU-173
 LAT. 37°39'47.75842"
 LON. 101°32'37.16018"

- NOTES:**
- THIS PLAN DOES NOT REPRESENT A TRUE BOUNDARY SURVEY. THE FOOTAGES AND BEAS SHOWN ARE FOUND UNLESS OTHERWISE NOTED. BEAS ARE ACTUAL PROPERTY LINES.
 - CONTRACTOR TO CONTACT ONE-CALL FOR FURTHER UTILITY LOCATIONS PRIOR TO ANY EXCAVATION OR CONSTRUCTION.
 - ROAD 27 LAT-LOGD.



T-27-S, R-39-W
 STANTON COUNTY, KANSAS

LINN OPERATING INC.
ENDSLEY #4 ATU-173
 SEC. 25, 26, 35 & 36 T-27-S, R-39-W
 STANTON COUNTY, KANSAS



JOHN DAVID KELLER, L.S. NO. 1518

PLAT AND CERTIFICATION OF ACREAGE ATTRIBUTABLE TO A GAS WELL

Kansas Corporation Commission, Conservation Division
 Finney State Office Building, 130 South Market, Room 2078
 Wichita, Kansas 67202

API NUMBER 15- _____

LOCATION OF WELL: COUNTY Stanton

OPERATOR Linn Operating, Inc.

235 N feet from south/north line of section

LEASE Endsley

180 W feet from east / west line of section

WELL NUMBER 4 ATU-173

FIELD Hugoton-Panoma

SECTION 36 TWP 27S (S) RG 39W E/W

NUMBER OF ACRES ATTRIBUTABLE TO WELL 640

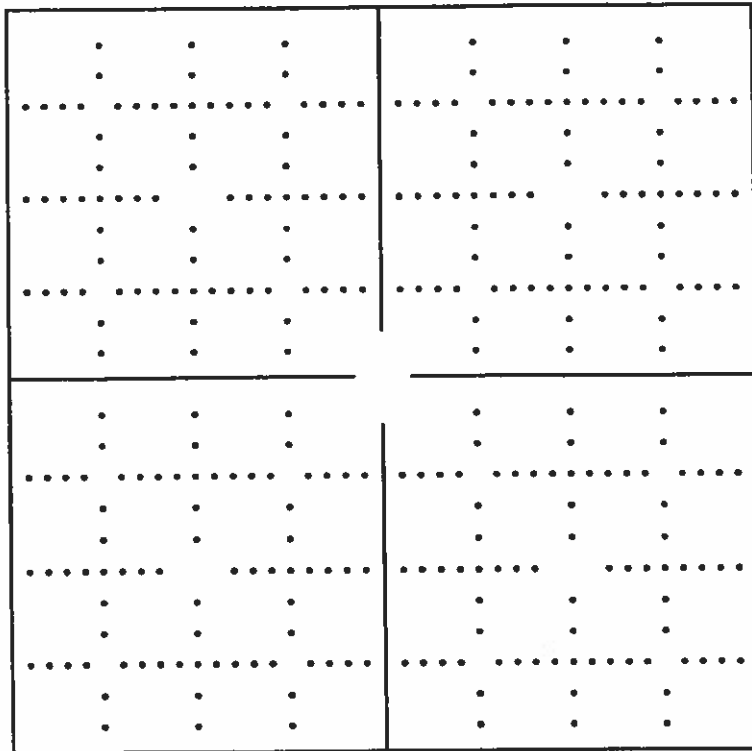
IS SECTION X REGULAR or _____ IRREGULAR

QTR/QTR/QTR OF ACREAGE NW - NW - NW

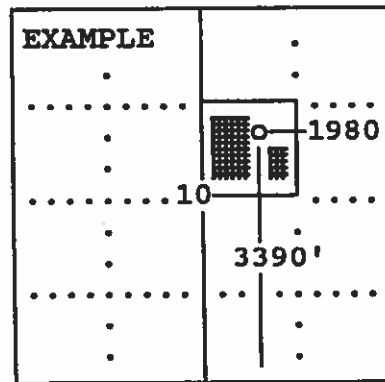
IF SECTION IS IRREGULAR, LOCATE WELL FROM
 NEAREST CORNER BOUNDARY. (check line below)

Section corner used: NE NW SE SW

(Show the location of the well and shade attributable acreage for prorated or spaced wells).
 (Show the footage to the nearest lease or unit boundary line; and show footage to the nearest
 common source supply well).



see attached map



SEWARD CO.

The undersigned hereby certifies as Regulatory Compliance Advisor (title) for
Linn Operating, Inc. (Co.), a duly authorized agent, that all

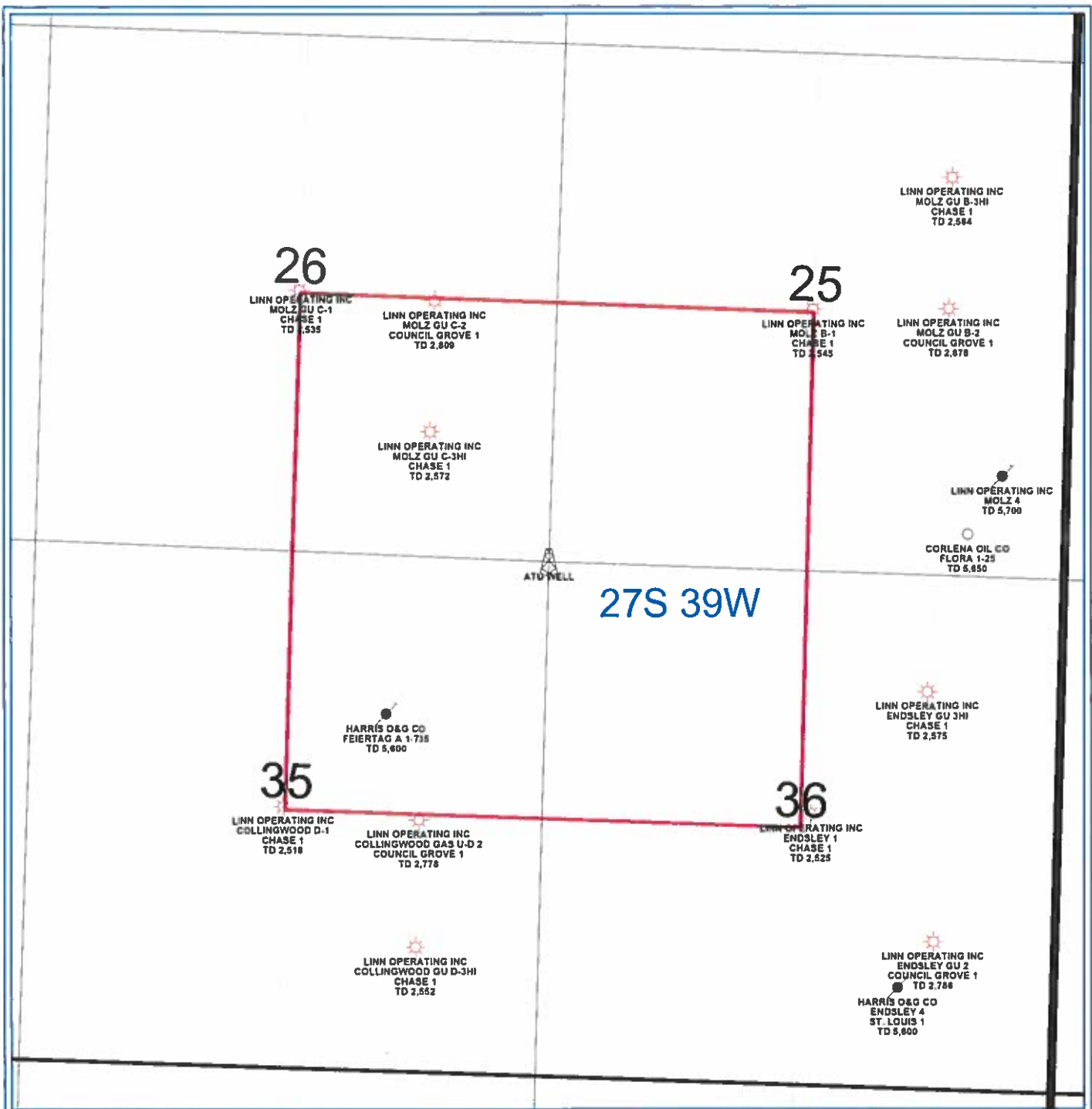
information shown hereon is true and correct to the best of my knowledge and belief, that all
 acreage claimed attributable to the well named herein is held by production from that well
 and hereby make application for an allowable to be assigned to the well upon the filing of
 this form and the State test, whichever is later.

Signature *Shawn Hixson*

Subscribed and sworn to before me on this 22 day of October, 19 2014

Notary Public

My Commission expires _____



PETRA 4/17/2013 2:57:16 PM



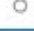

LINN Operating Inc

Hugoton Kansas

ATU Location

Stanton Co. 27S-39W

0 1,455
 FEET

WELL SYMBOLS
 ATU Well Location
 Gas Well
 Plugged and Abandoned
 LOCATION