

LINN OPERATING INC. MATER A-5 ATU-272

185' FNL
 185' FWL
 NW/4 OF NW/4 OF NW/4 OF NW/4 OF
 SECTION 13, T-27-S, R-39-W, STANTON CO., KS.
 LATITUDE: 37°42'24.76473" N
 LONGITUDE: 101°32'38.15467" W
 GROUND ELEVATION: 3205.2'



Keller
 Surveying &
 Mapping

2330 B LAKEVIEW DRIVE
 AMARILLO, TEXAS 79109
 PH (806)418-5253

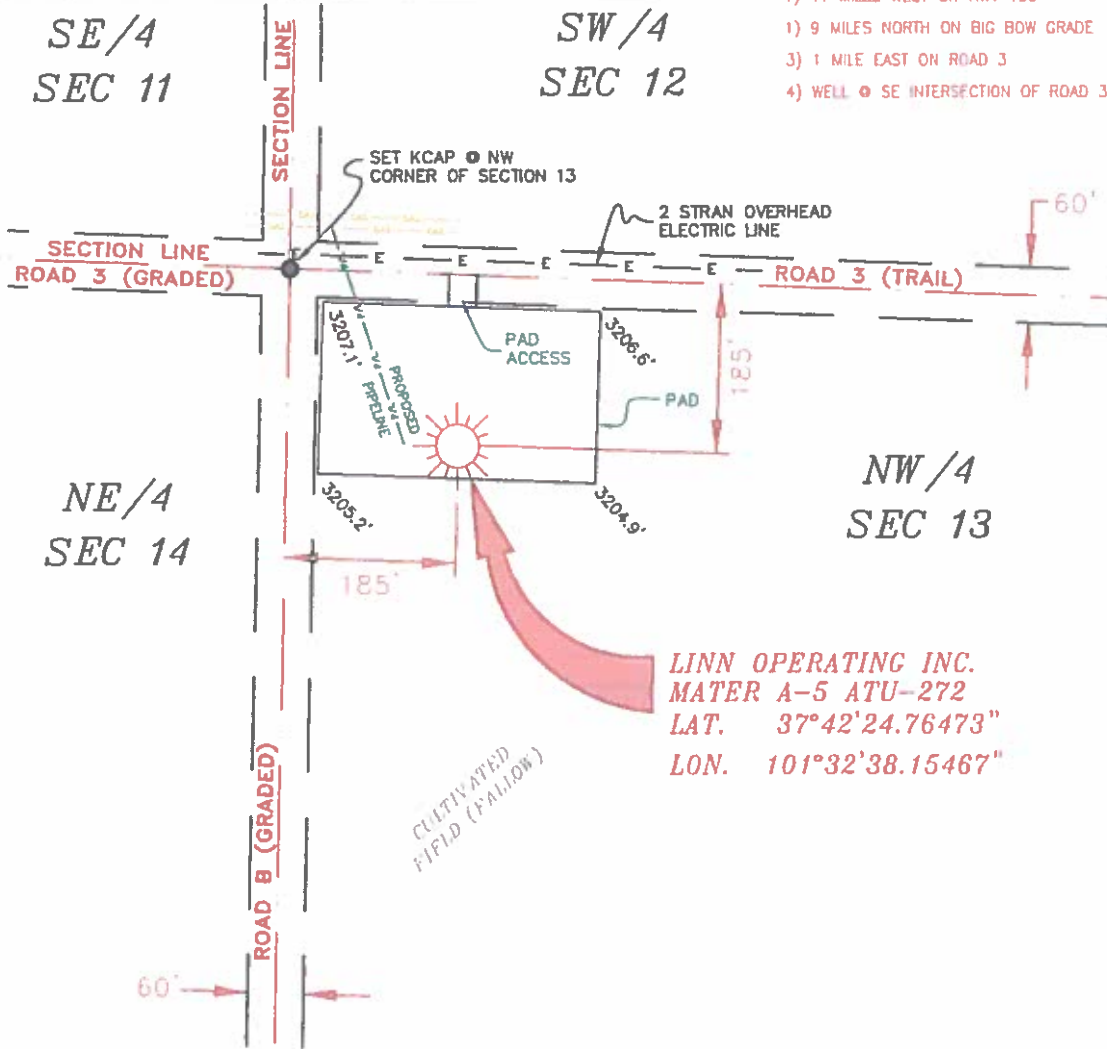
DRAWN BY DWI
 APPROVED BY JDP
 SCALE 1" = 200'
 DATE 8/12/14

LINN
 Energy

2225 W. OKLAHOMA AVE
 ULYSSES KANSAS 67880
 PH. (620)356-6940
 FAX. (620)356-6950

DRIVING DIRECTIONS:

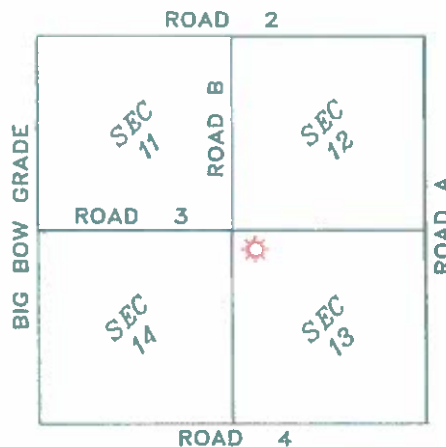
- BEGINNING AT INTERSECTION OF US HWY 160 & HWY 25
- 1) 11 MILES WEST ON HWY 160
 - 2) 9 MILES NORTH ON BIG BOW GRADE
 - 3) 1 MILE EAST ON ROAD 3
 - 4) WELL @ SE INTERSECTION OF ROAD 3 & ROAD B



LINN OPERATING INC.
MATER A-5 ATU-272
 LAT. 37°42'24.76473"
 LON. 101°32'38.15467"

NOTES:

- 1) THIS PLAN DOES NOT REPRESENT A TRUE BOUNDARY SURVEY. THE FOOTAGES AND THE SPACING ARE FROM LINE OF INFORMATION WHICH MAY NOT BE ACTUAL PROPERTY LINES.
- 2) CONTRACTOR TO CONTACT ONE (1) CALL FOR FOREIGN UTILITY LOCATIONS PRIOR TO ANY EXCAVATION OR CONSTRUCTION.
- 3) PAD 27.141.1010



T-27-S, R-39-W
 STANTON COUNTY, KANSAS



JOHN DAVID KELLER, L.S. NO. 1518

LINN OPERATING INC.
MATER A-5 ATU-272
 SEC. 11, 12, 13 & 14, T-27-S, R-39-W
 STANTON COUNTY, KANSAS

PLAT AND CERTIFICATION OF ACREAGE ATTRIBUTABLE TO A GAS WELL

Kansas Corporation Commission, Conservation Division
 Finney State Office Building, 130 South Market, Room 2078
 Wichita, Kansas 67202

API NUMBER 15- _____

LOCATION OF WELL: COUNTY Stanton

OPERATOR Linn Operating, Inc.

185 N feet from south/north line of section

LEASE Mater

185 W feet from east / west line of section

WELL NUMBER A-5 ATU-272

FIELD Hugoton-Panoma

SECTION 13 TWP 27S (S) RG 39W E/W

NUMBER OF ACRES ATTRIBUTABLE TO WELL 640

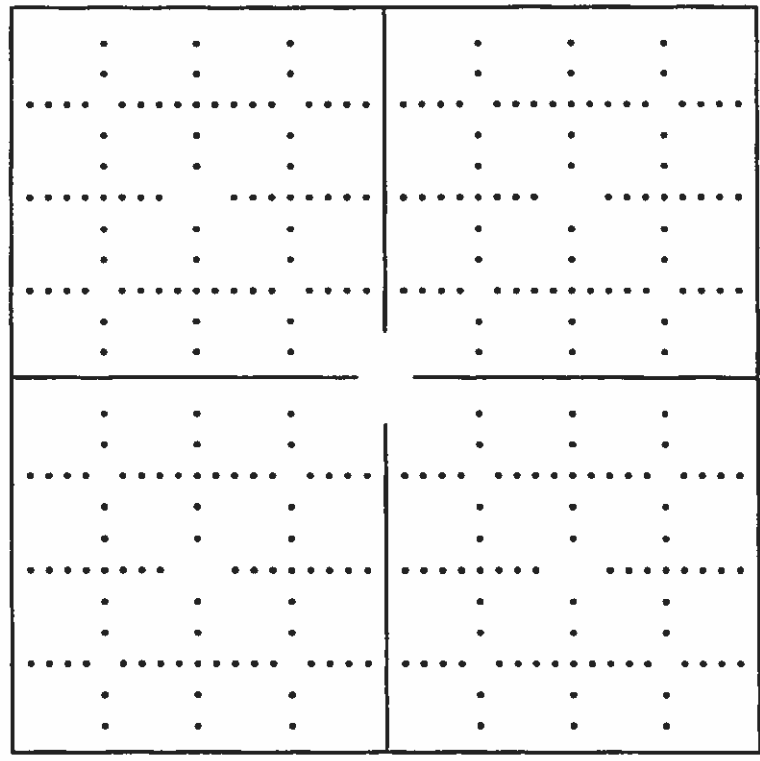
IS SECTION X REGULAR or _____ IRREGULAR

QTR/QTR/QTR OF ACREAGE NW - NW - NW

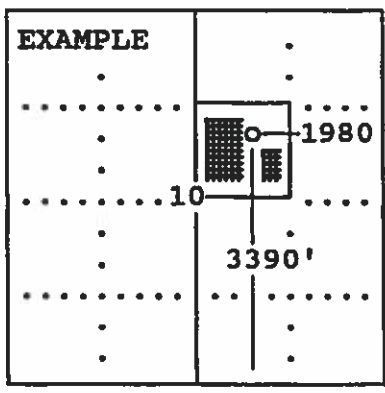
IF SECTION IS IRREGULAR, LOCATE WELL FROM

NEAREST CORNER BOUNDARY. (check line below)
 Section corner used: NE NW SE SW

(Show the location of the well and shade attributable acreage for prorated or spaced wells).
 (Show the footage to the nearest lease or unit boundary line; and show footage to the nearest common source supply well).



see attached map



SEWARD CO.

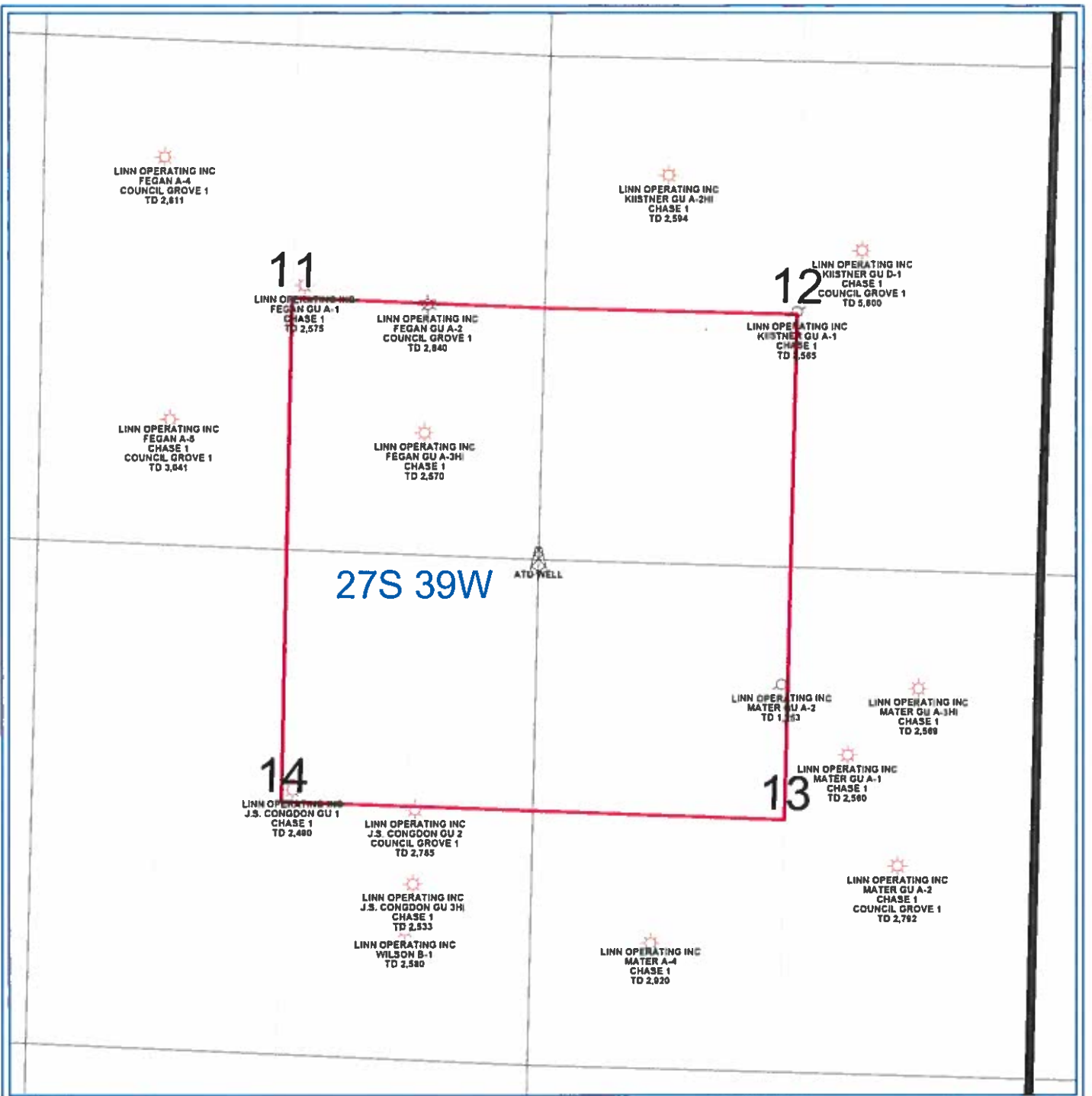
The undersigned hereby certifies as Regulatory Compliance Advisor (title) for Linn Operating, Inc. (Co.), a duly authorized agent, that all

information shown hereon is true and correct to the best of my knowledge and belief, that all acreage claimed attributable to the well named herein is held by production from that well and hereby make application for an allowable to be assigned to the well upon the filing of this form and the State test, whichever is later.

Signature *Shawn Hinson*

Subscribed and sworn to before me on this 22 day of October, 19 2014

My Commission expires _____
 Notary Public
 FORM CG-8 (12/94)



PETRA 4/29/2013 12:46:43 PM

LINN Operating Inc	
Hugoton Kansas	
ATU Location	
Stanton Co. 27S - 39W	
WELL SYMBOLS Abandoned Well ATU Well Location Gas Well Plugged & Abandoned Gas Well	