



**DIAMOND TESTING**  
P.O. Box 157  
**HOISINGTON, KANSAS 67544**  
(800) 542-7313  
**DRILL-STEM TEST TICKET**  
FILE: JB 1 Dst 2

TIME ON: 16:21  
TIME OFF: 23:28

Company RJM Company Lease & Well No. JB 1  
Contractor Southwind Drilling Rig 6 Charge to RJM Company  
Elevation 1877 Sur Formation \_\_\_\_\_ Arb Effective Pay \_\_\_\_\_ Ft. Ticket No. RR096  
Date Oct/08/2014 Sec. 34 Twp. \_\_\_\_\_ 16 S Range \_\_\_\_\_ 12 W County \_\_\_\_\_ Barton State KANSAS  
Test Approved By Wyatt Urban Diamond Representative RICKY RAY

Formation Test No. 2 Interval Tested from 3306 ft. to 3337 ft. Total Depth 3337 ft.  
Packer Depth 3301 ft. Size 6 3/4 in. Packer depth \_\_\_\_\_ ft. Size 6 3/4 in.  
Packer Depth 3306 ft. Size 6 3/4 in. Packer depth \_\_\_\_\_ ft. Size 6 3/4 in.

Depth of Selective Zone Set \_\_\_\_\_  
Top Recorder Depth (Inside) 3296 ft. Recorder Number 0062 Cap. 5000 P.S.I.  
Bottom Recorder Depth (Outside) 3310 ft. Recorder Number 5954 Cap. 5000 P.S.I.  
Below Straddle Recorder Depth \_\_\_\_\_ ft. Recorder Number \_\_\_\_\_ Cap. \_\_\_\_\_ P.S.I.

Mud Type CHEM Viscosity 50 Drill Collar Length 0 ft. I.D. 2 1/4 in.  
Weight 9 Water Loss 8.2 cc. Weight Pipe Length 0 ft. I.D. 2 7/8 in.  
Chlorides 4000 P.P.M. Drill Pipe Length 3283 ft. I.D. 3 1/2 in.  
Jars: Make STERLING Serial Number NA Test Tool Length 23 ft. Tool Size 3 1/2-IF in.  
Did Well Flow? NA Reversed Out NA Anchor Length 31 ft. Size 4 1/2-FH in.  
Main Hole Size 7 7/8 Tool Joint Size 4 1/2 xh in. Surface Choke Size 1 in. Bottom Choke Size 5/8 in.

Blow: 1st Open: 1/2" Blow (BOB in 9 mins) 1/4 inch BB  
2nd Open: 1/4" Blow (BOB in 12 mins) NOBB

Recovered 72 ft. of GIP  
Recovered 486 ft. of O 100 % O 37 Gravity @ 60 Deg  
Recovered 124 ft. of GM w/ HO 10% G 75 % O 15 % M  
Recovered 610 ft. of Total Fluid

Recovered _____ ft. of _____	Price Job
Recovered _____ ft. of _____	Other Charges
Remarks: Tool Sample: <u>65% O 35 % M</u>	Insurance
	Total

Time Set Packer(s) 6:12 PM A.M. P.M. Time Started Off Bottom 9:12 PM A.M. P.M. Maximum Temperature 109

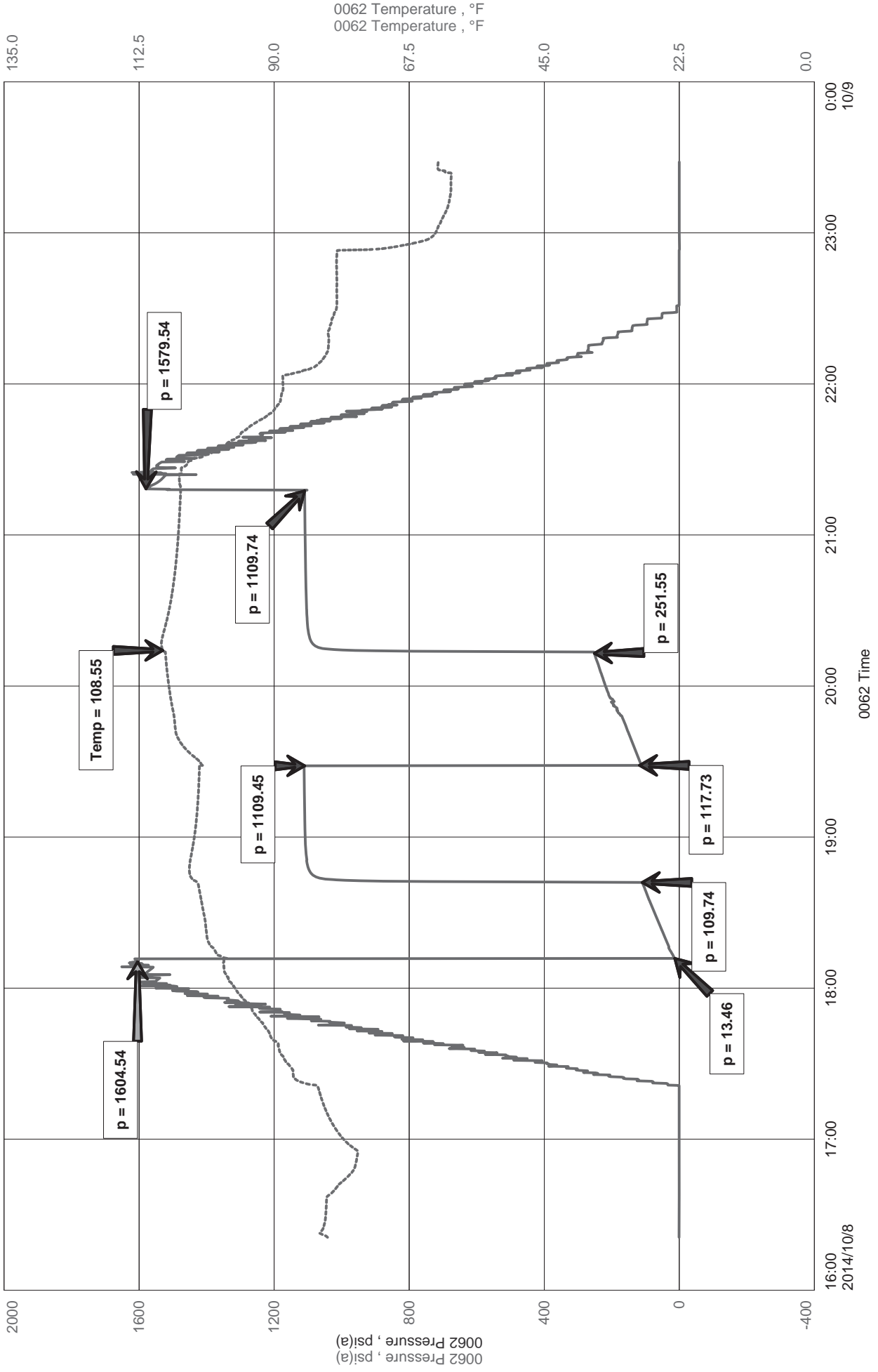
Initial Hydrostatic Pressure..... (A) 1605 P.S.I.  
Initial Flow Period..... Minutes 30 (B) 13 P.S.I. to (C) 110 P.S.I.  
Initial Closed In Period..... Minutes 45 (D) 1109 P.S.I.  
Final Flow Period..... Minutes 45 (E) 118 P.S.I. to (F) 252 P.S.I.  
Final Closed In Period..... Minutes 60 (G) 1110 P.S.I.  
Final Hydrostatic Pressure..... (H) 1580 P.S.I.

Diamond Testing shall not be liable for damages of any kind to the property or personnel of the one for whom a test is made or for any loss suffered or sustained, directly or indirectly, through the use of its equipment, or its statement or opinion concerning the result of any test. Tools lost or damaged in the hole shall be paid for at cost by the party for whom the test is made.

RJM Company  
Dst 2 Arbuckle (3306-3337)  
Start Test Date: 2014/10/08  
Final Test Date: 2014/10/08

JB 1  
Formation: Dst 2 Arbuckle (3306-3337)  
Pool: Infield  
Job Number: RR096

# JB 1





Diamond Testing LLC  
 P.O. Box 157  
 HoisingtonKS 67544

**Ricky Ray - Tester**  
**(620) 617-7261**

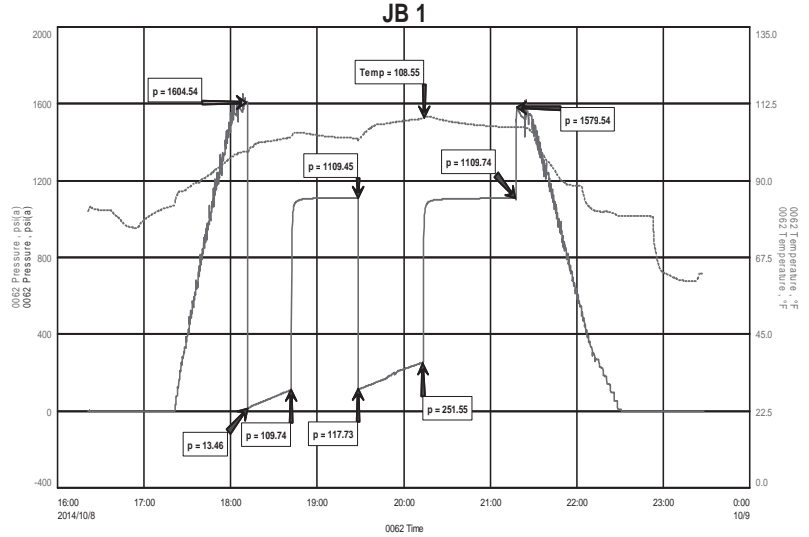
# Wellsite Report

## General Information

Company Name	RJM Company
Contact	Chris Hoffman
Well Operator	RJM Company
Well Name	JB 1
Surface Location	Sec: 31-16s-12W (Barton County)
Field	Unkown
Well Type	Vertical
Pool	Infield
Test Purpose (AEUB)	Initial Test
Qualified By	Wyatt Urban
Gauge Name	0062

## Test Information

Job Number	RR096
Test Type	Drill Stem Test
Well Fluid Type	01 Oil
Formation	Dst 2 Arbuckle (3306-3337)
Start Test Date	2014/10/08 YYYY/MM/DD
Start Test Time	16:21:00 HH:mm:ss
Final Test Date	2014/10/08 YYYY/MM/DD
Final Test Time	23:28:00 HH:mm:ss



## Test Results

### Recovery:

72'	GIP		
486'	O	100% O	37 Gravity @ 60 Deg
124'	GM w/ HO	10% G	75% O      15% M
610'	Total Fluid		

Tool Sample:              65 % O              35 % M