



**TRILOBITE  
TESTING, INC**

# DRILL STEM TEST REPORT

Herman L. Loeb, LLC.  
P.O. Box 838  
Lawrenceville, IL 62439  
ATTN: Jon Christensen

**29-27s-16w Kiowa Co., KS**  
**Rosenberger 3-29**  
Job Ticket: 54162      **DST#: 3**  
Test Start: 2014.07.29 @ 22:46:36

## GENERAL INFORMATION:

Formation: **Miss. Chert**  
Deviated: No Whipstock: 0.00 ft (KB)  
Time Tool Opened: 01:01:06  
Time Test Ended: 06:35:51  
Interval: **4735.00 ft (KB) To 4790.00 ft (KB) (TVD)**  
Total Depth: 4790.00 ft (KB) (TVD)  
Hole Diameter: 7.88 inches Hole Condition: Fair  
Test Type: Conventional Bottom Hole (Reset)  
Tester: Ryan Reynolds  
Unit No: 68  
Reference Elevations: 2203.00 ft (KB)  
2192.00 ft (CF)  
KB to GR/CF: 11.00 ft

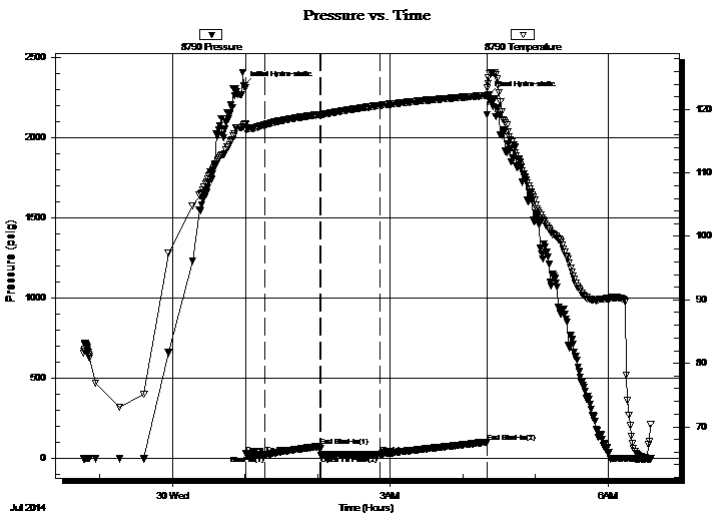
## Serial #: 8790

Inside

Press@RunDepth: 26.79 psig @ 4744.00 ft (KB)      Capacity: 8000.00 psig  
Start Date: 2014.07.29      End Date: 2014.07.30      Last Calib.: 2014.07.30  
Start Time: 22:46:41      End Time: 06:35:50      Time On Btm: 2014.07.30 @ 00:59:21  
Time Off Btm: 2014.07.30 @ 04:20:51

TEST COMMENT: IF: Weak blow . surf. - 3"  
IS: No blow .  
FF: Weak blow . surf. - 3"  
FS: No blow .

## PRESSURE SUMMARY



Time (Min.)	Pressure (psig)	Temp (deg F)	Annotation
0	2322.92	117.63	Initial Hydro-static
2	28.09	116.72	Open To Flow (1)
17	21.32	117.58	Shut-In(1)
63	75.16	119.21	End Shut-In(1)
64	20.93	119.20	Open To Flow (2)
112	26.79	120.63	Shut-In(2)
201	102.31	122.21	End Shut-In(2)
202	2265.36	124.03	Final Hydro-static

## Recovery

Length (ft)	Description	Volume (bbl)
10.00	Drig mud 100%m	0.05
0.00	60' GIP	0.00

\* Recovery from multiple tests

## Gas Rates

	Choke (inches)	Pressure (psig)	Gas Rate (Mcf/d)



**TRILOBITE  
TESTING, INC**

# DRILL STEM TEST REPORT

**FLUID SUMMARY**

Herman L. Loeb, LLC.  
P.O. Box 838  
Lawrenceville, IL 62439  
ATTN: Jon Christensen

**29-27s-16w Kiowa Co., KS**  
**Rosenberger 3-29**  
Job Ticket: 54162      **DST#: 3**  
Test Start: 2014.07.29 @ 22:46:36

## Mud and Cushion Information

Mud Type: Gel Chem	Cushion Type:	Oil API:	deg API
Mud Weight: 9.00 lb/gal	Cushion Length: ft	Water Salinity:	6300 ppm
Viscosity: 48.00 sec/qt	Cushion Volume: bbl		
Water Loss: 11.18 in <sup>3</sup>	Gas Cushion Type:		
Resistivity: ohm.m	Gas Cushion Pressure: psig		
Salinity: 6300.00 ppm			
Filter Cake: 0.08 inches			

## Recovery Information

Recovery Table

Length ft	Description	Volume bbl
10.00	Drig mud 100%m	0.049
0.00	60' GIP	0.000

Total Length: 10.00 ft      Total Volume: 0.049 bbl  
 Num Fluid Samples: 0      Num Gas Bombs: 0      Serial #: none  
 Laboratory Name:      Laboratory Location:  
 Recovery Comments:

### Pressure vs. Time

