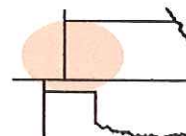


Pro-Stake LLC
 Oil Field & Construction Site Staking
 P.O. Box 2324
 Garden City, Kansas 67846
 Office/Fax: (620) 276-6159
 Cell: (620) 272-1499
 burt@pro-stakelle.kscoxmail.com



001432
 PLAT NO.

12233
 INVOICE NO.

Shakespeare Oil Company, Inc.

Ottley #2-21

OPERATOR
Logan County, KS
 COUNTY

LEASE NAME

1635' FNL - 2590' FWL (2680' FEL)

21 14s 32w
 Sec. Twp. Rng.

LOCATION SPOT

SCALE: **1" = 1000'**
 DATE STAKED: **Oct. 16th, 2014**
 MEASURED BY: **Kent C.**
 DRAWN BY: **Norby S.**
 AUTHORIZED BY: **Don W.**

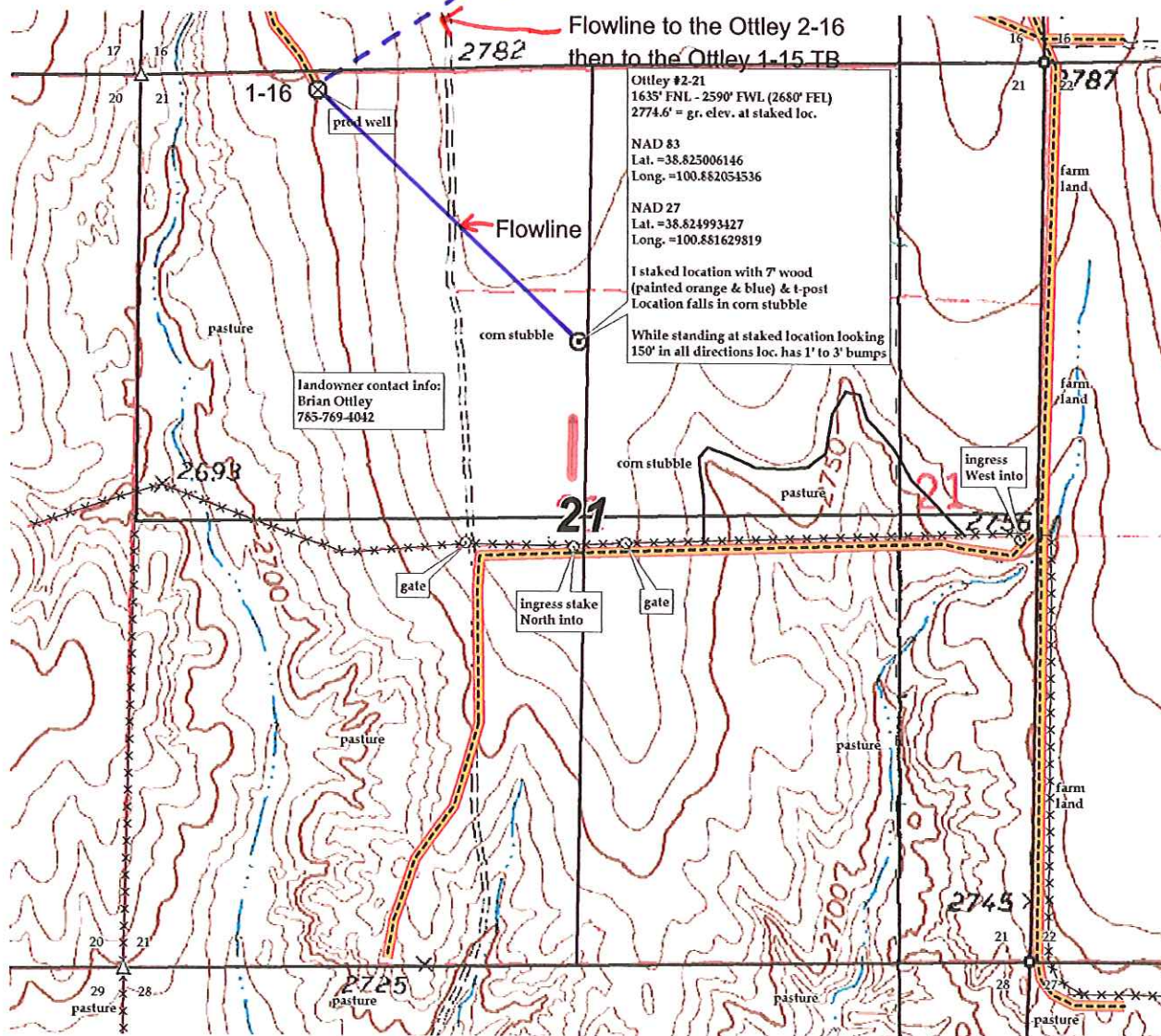
GR. ELEVATION: **2774.6'**



Directions: From the South side of Oakley, KS at the intersection of Hwy 40 & Hwy 83 South – Now go 20 miles South on Hwy 83 – Now go 1 mile West & NW on Jayhawk Rd – Now go 0.3 mile S-SW on trail which is approx. 60' East of the NE corner of section 21-14s-32w – Now go 0.5 mile South on trail to ingress West into – Now go 0.5 mile West on trail to ingress stake North into – Now go approx. 1210' North through corn stubble, into staked location.

Final ingress must be verified with land owner Operator.

This drawing does not constitute a monumented survey or a land survey plat.
This drawing is for construction purposes only.



Preliminary non-binding estimate of flowlines, roads and tanks