



TRILOBITE TESTING, INC

DRILL STEM TEST REPORT

Herman L. Loeb LLC
 P.O.Box 838
 Lawrenceville, IL 62439
 ATTN: Jon Christensen

15-28s-19w Kiowa Ks.
Joy Station #1-15
 Job Ticket: 57852 **DST#: 1**
 Test Start: 2014.09.16 @ 19:09:27

GENERAL INFORMATION:

Formation: **K.C. "H"**
 Deviated: No Whipstock: ft (KB)
 Test Type: Conventional Bottom Hole (Initial)
 Time Tool Opened: 21:07:27
 Tester: Gary Pevoteaux
 Time Test Ended: 01:43:12
 Unit No: 56
 Interval: **4458.00 ft (KB) To 4489.00 ft (KB) (TVD)**
 Reference Elevations: 2287.00 ft (KB)
 Total Depth: 4489.00 ft (KB) (TVD) 2274.00 ft (CF)
 Hole Diameter: 7.88 inches Hole Condition: Fair KB to GR/CF: 13.00 ft

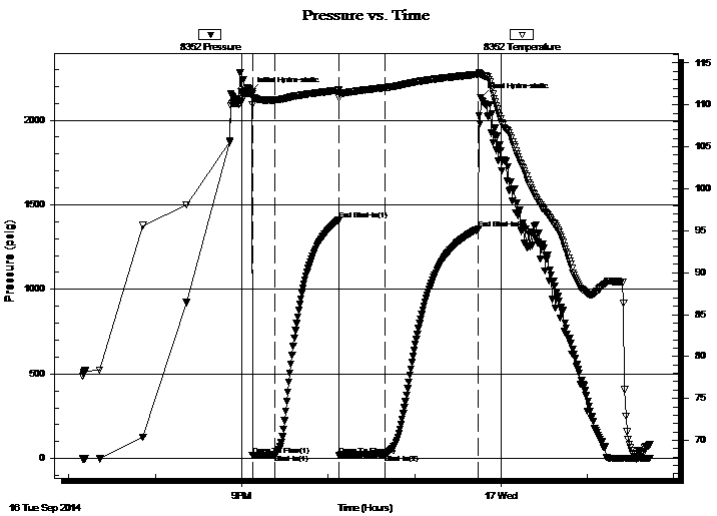
Serial #: 8352

Outside

Press@RunDepth: 26.47 psig @ 4459.00 ft (KB) Capacity: 8000.00 psig
 Start Date: 2014.09.16 End Date: 2014.09.17 Last Calib.: 2014.09.17
 Start Time: 19:09:32 End Time: 01:43:11 Time On Btm: 2014.09.16 @ 21:05:57
 Time Off Btm: 2014.09.16 @ 23:45:57

TEST COMMENT: IF:Weak blow . 1/4".
 IS:No blow .
 FF:Weak surge. No blow .
 FS:No blow .

PRESSURE SUMMARY



Time (Min.)	Pressure (psig)	Temp (deg F)	Annotation
0	2171.34	111.35	Initial Hydro-static
2	18.15	110.00	Open To Flow (1)
17	22.40	110.58	Shut-In(1)
62	1410.72	111.76	End Shut-In(1)
62	21.14	110.89	Open To Flow (2)
94	26.47	112.06	Shut-In(2)
159	1357.72	113.65	End Shut-In(2)
160	2135.03	113.64	Final Hydro-static

Recovery

Length (ft)	Description	Volume (bbl)
15.00	Heavy mud (Good odor)	0.07

Gas Rates

	Choke (inches)	Pressure (psig)	Gas Rate (Mcf/d)



**TRILOBITE
TESTING, INC**

DRILL STEM TEST REPORT

FLUID SUMMARY

Herman L. Loeb LLC
P.O.Box 838
Lawrenceville, IL 62439
ATTN: Jon Christensen

15-28s-19w Kiowa Ks.
Joy Station #1-15
Job Ticket: 57852 **DST#: 1**
Test Start: 2014.09.16 @ 19:09:27

Mud and Cushion Information

Mud Type: Gel Chem	Cushion Type:	Oil API:	deg API
Mud Weight: 9.00 lb/gal	Cushion Length: ft	Water Salinity:	4000 ppm
Viscosity: 62.00 sec/qt	Cushion Volume: bbl		
Water Loss: 8.99 in ³	Gas Cushion Type:		
Resistivity: 0.00 ohm.m	Gas Cushion Pressure: psig		
Salinity: 4000.00 ppm			
Filter Cake: 0.20 inches			

Recovery Information

Recovery Table

Length ft	Description	Volume bbl
15.00	Heavy mud (Good odor)	0.074

Total Length: 15.00 ft Total Volume: 0.074 bbl
 Num Fluid Samples: 0 Num Gas Bombs: 0 Serial #: none
 Laboratory Name: Laboratory Location:
 Recovery Comments:

