



VINCENT OIL CORPORATION



Scale 1:240 Imperial

Well Name:	Marfam 2-32	
Surface Location:	32-29S-24W NE SW SW SW	
Bottom Location:		
API:	15-057-20933-00-00	
License Number:		
Spud Date:	7/5/2014	Time: 10:45 PM
Region:		
Drilling Completed:	7/15/2014	Time: 2:55 PM
Surface Coordinates:	421 FSL & 371 FWL	
Bottom Hole Coordinates:		
Ground Elevation:	2564.00ft	
K.B. Elevation:	2574.00ft	
Logged Interval:	4250.00ft	To: 5434.00ft
Total Depth:	5430.00ft	
Formation:	MISS	
Drilling Fluid Type:	Chemical	

OPERATOR

Company:	Vincent Oil Corporation	
Address:	155 N. Market St. Ste 700 Wichita, KS 67202	
Contact Geologist:	Dick Jordan	
Contact Phone Nbr:	316-262-3573	
Well Name:	Marfam 2-32	
Location:	32-29S-24W NE SW SW SW	API: 15-057-20933-00-00
Pool:		Field: FAGER EAST
State:	KS	Country: USA

CONTRACTOR

Contractor:	Val Drilling	
Rig #:	2	
Rig Type:	Rotary	
Spud Date:	7/5/2014	Time: 10:45 PM
TD Date:	7/15/2014	Time: 2:55 PM
Rig Release:	7/16/2014	Time: 12:00 AM

LOGGED BY

Company: Vincent Oil Corporation

Address: 155 N Market St
 Ste 700
 Wichita, KS
 Phone Nbr: 67202
 Logged By: Geologist

Name: Tom Dudgeon

SURFACE CO-ORDINATES

Well Type: Vertical
 Longitude: -99.9779599
 N/S Co-ord: 421 FSL
 E/W Co-ord: 371 FWL
 Latitude: 37.4735086

ELEVATIONS

K.B. Elevation: 2574.00ft
 K.B. to Ground: 10.00ft
 Ground Elevation: 2564.00ft

TOTAL DEPTH

Measurement Type: Logger
 Geolograph
 Measurement Depth: 5419.00
 5130.00
 TVD: 5419.00
 5419.00

OPEN HOLE LOGS

Logging Company: Nabors Completion _Production Services Co.
 Logging Engineer: Jason Cappellucci
 Truck #: 3802
 Logging Date: 7/15/2014
 # Logs Run: 2
 Time Spent: 3
 # Logs Run Successful: 2

LOGS RUN

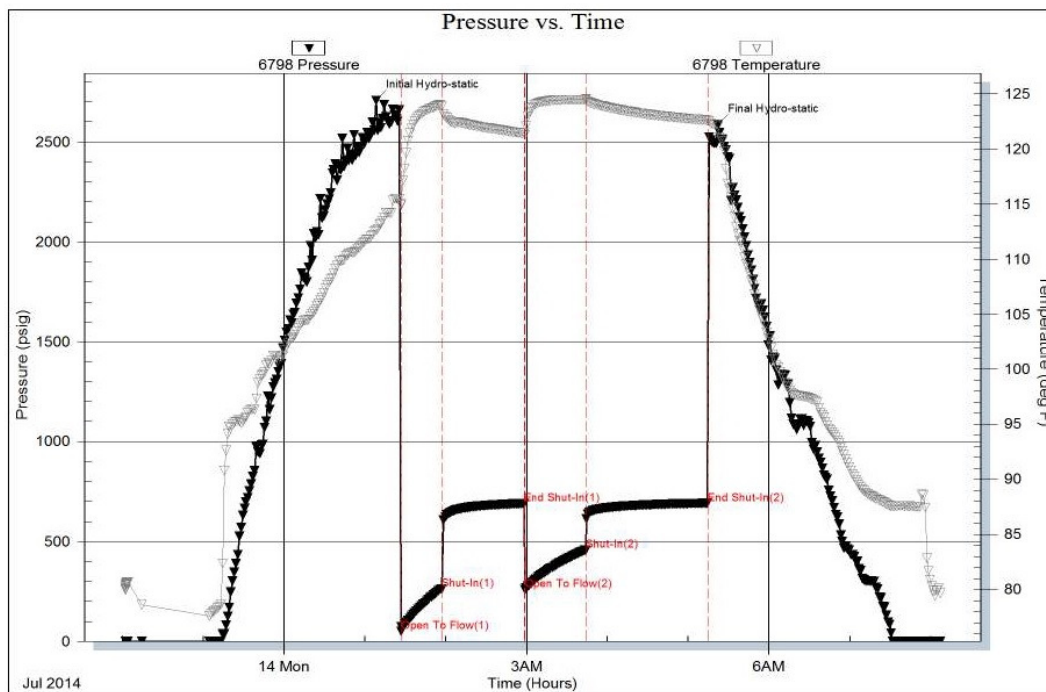
Tool	Logged Interval	Logged Interval	Hours	Remarks	Run #
COMP DEN/NEI	4300.00ft	5419.00ft	2.00		1
DUAL INDUCTIK	0.00ft	5419.00ft	2.00		1

LOGGING OPERATION SUMMARY

Date	From	To	Description Of Operation
7/16/2014	0.00ft	5419.00ft	LOGS SUCCESSFUL

DST #1

Serial #: 6798 Inside Vincent Oil Corporation Marfam 2-32 DST Test Number: 1



DST #2

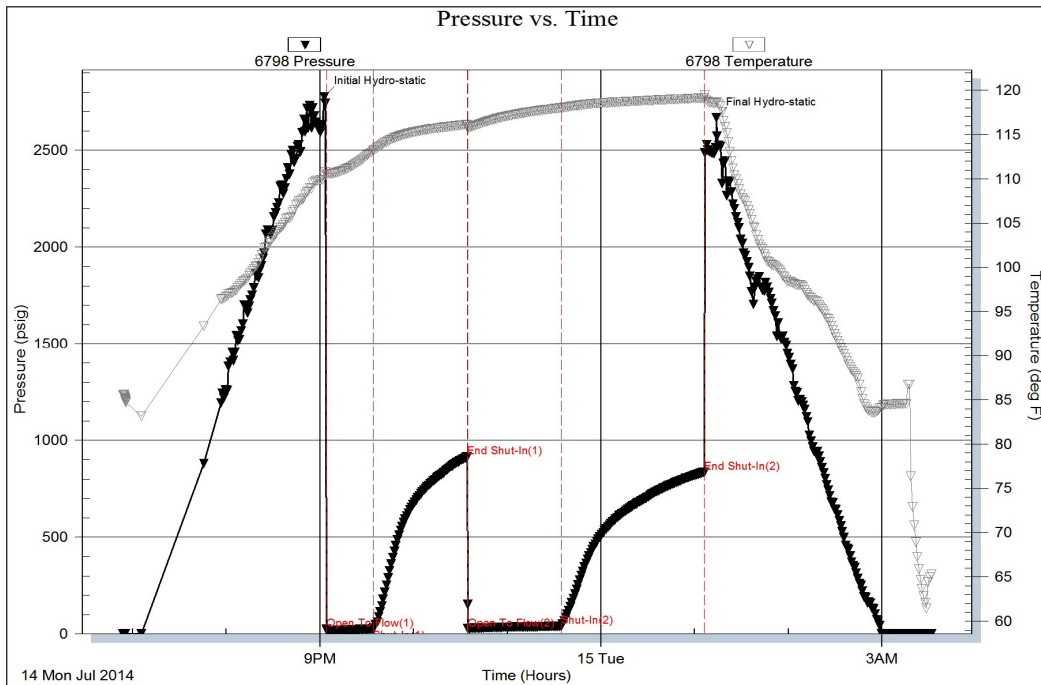
Serial #: 6798

Inside

Vincent Oil Corporation

Marfam 2-32

DST Test Number: 2

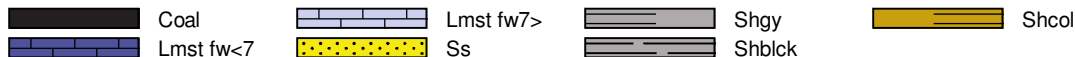


Triblote Testing, Inc

Ref. No: 51810

Printed: 2014.07.15 @ 06:46:18

ROCK TYPES



ACCESSORIES

MINERAL

- ⊥ Calcareous
- ▲ Chert, dark
- Ferruginous, grains or p...
- ∩ Glauconite
- Sandy
- Silty
- △ Chert White

FOSSIL

- ∩ Bioclastic or Fragmental
- ◇ Brachiopod
- Crinoids
- F Fossils < 20%
- ◇ Oolite

STRINGER

- Shale

TEXTURE

- C Chalky
- e Earthy
- FX Finexln
- MX Microxln

DUNHAM

- MS Mudst
- WS Wackstone

OTHER SYMBOLS

POROSITY TYPE

- x Intercrystalline
- φ Interoolitic
- V Vuggy
- P Pinpoint
- ∩ Moldic
- O Organic
- F Fracture
- e Earthy
- Fenestral

OIL SHOWS

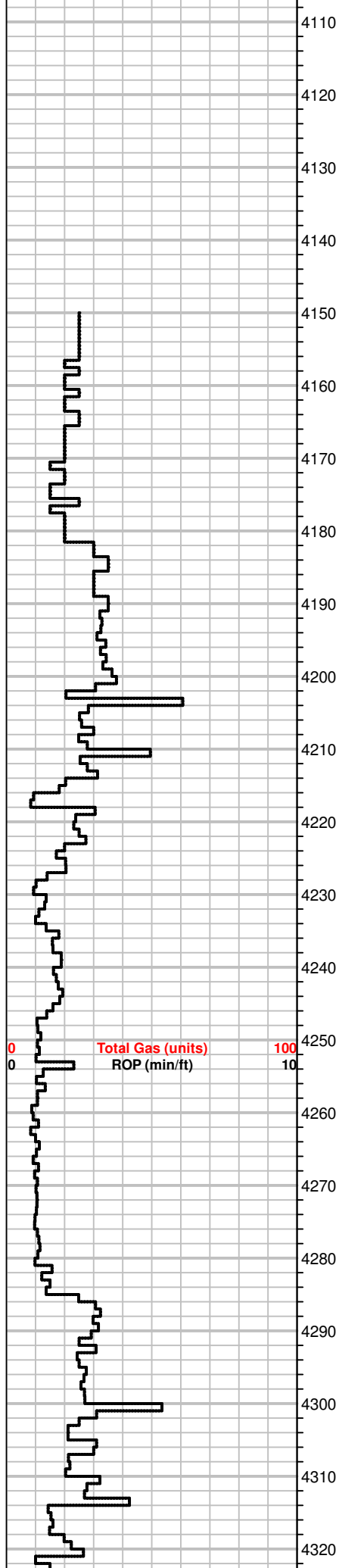
- Even Stn
- Spotted Stn 50 - 75 %
- Spotted Stn 25 - 50 %
- Spotted Stn 1 - 25 %
- Questionable Stn
- D Dead Oil Stn
- Fluorescence

INTERVALS

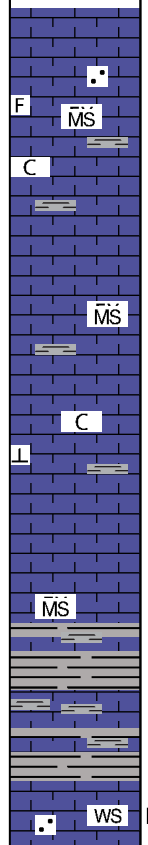
- Core
- DST

Printed by GEOstrip VC Striplog version 4.0.7.0 (www.grsi.ca)

Curve Track #01		Depth Intervals	Porosity Types	Interpreted Lithology	Oil Shows	Geological Descriptions	Comment
Total Gas (units)	ROP (min/ft)						
1:240 Imperial							
Total Gas (units)	ROP (min/ft)						
0	100						
0	10						



GEOLOGIST ON LOC @ 2:00PM 7/11/14, DRILLING @ 4590'
GAS DETECTOR UNIT: MBC TRAILER M14

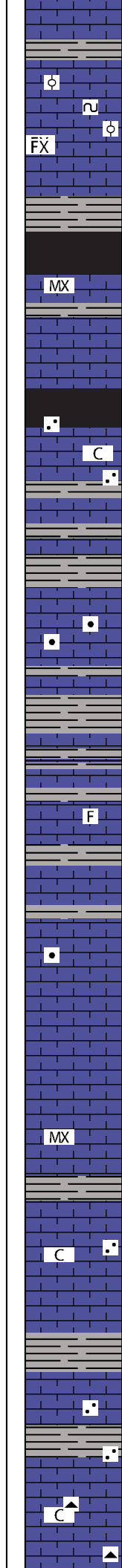
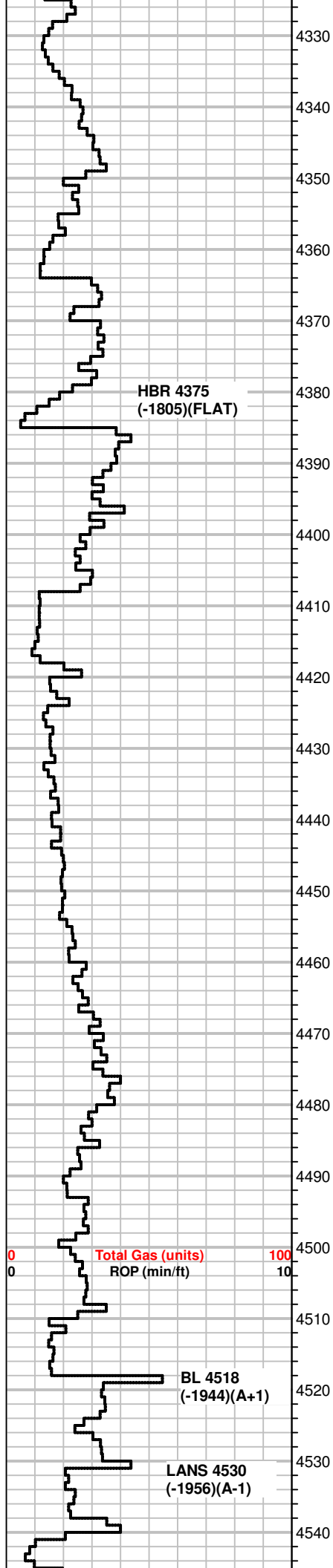


MS, crm to gray, f-xln, some mottled pcs, gritty txt., chalky pcs
scatt., calcite, fossilif.
Some SH, gray, green

MS-WS, lt. gray to pale gray, off white, chalky, most f-xln, brittle,
some calcite,
SH, dk gray to gray

WS, lt. gray, vf to f-xln, some micro-oolitic in txt, hard, brittle, some
Chert, tan

SH, blk, brn
MS-WS, A.A., some pcs gritty txt, firm, dead stn 1 pc



MS, crm to lt. gray, vf to f-xln, mirco-oolitic, some glauc, some SH, blk

MS-Shaly MS, crm to brn, carrying lt. gray MS, massive txt, dense, SH, gray, brn, blk

SH, Blk

MS-WS, crm to gray, m-xln, dense pcs, some gritty, hard, some mottled and chalky pcs scatt

MS-WS, A.A, some SH, blk

MS-WS, crm to gray, mottled brn, some blk specs, f-xln, dense, chalky in part, dull fluor, NS

SH, blk to gray

MS-WS, crm WS, gray MS, hard, fossilif, dense, NS

SH, gray, some blk

MS, crm to lt. tan, f-xln, dense, crinoids, dark gray inclusions, Chert, gray

Rare SH, dk. gray, brn

SH, dk, gray to gray, rare blk

MS, A.A., some brn, mic-xln, dense, NS

Some SH, gray, brn,

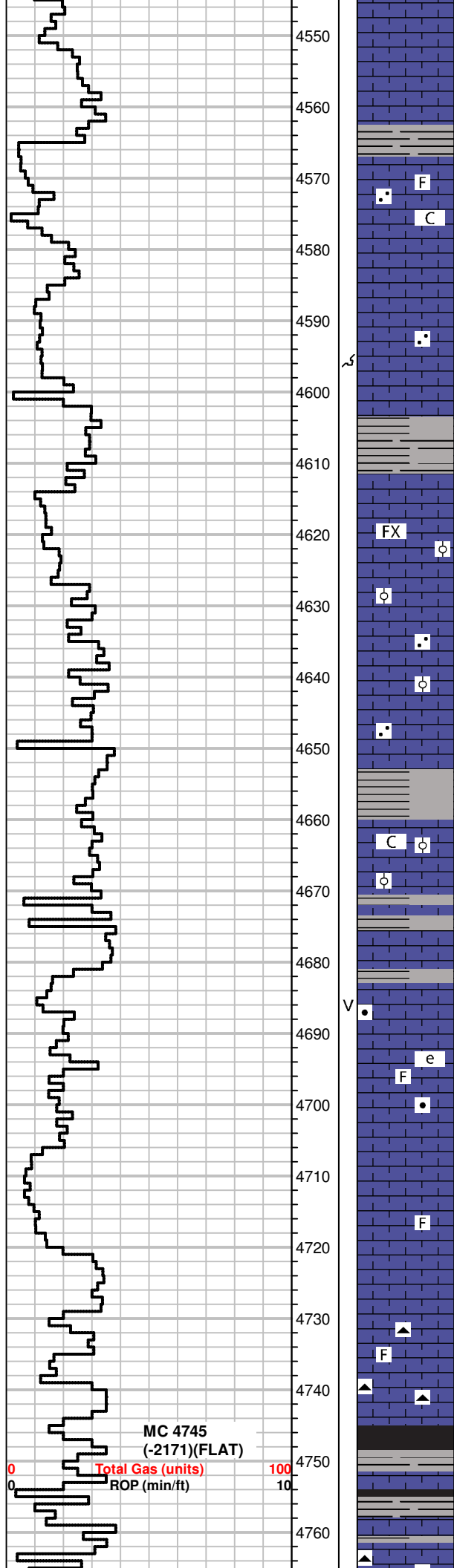
MS, crm to gray, f-xln, hard, rare chalky pcs, scatt brn MS pcs, dull fluor, NS

MS, brn, hard, f-xln, dense, NS

SH, gray, green, specs, sandy

MS, crm to lt. gray, f-xln, firm to hard, some partially chalky, Chert inclusions, gray, brn chert pcs,

SH, gray



MS, A.A., some sandy pcs, firm, rare bright fluor, NS
SH, gray, green,

MS, crm to gray, f-xln, some pcs gritty txt, chalky pcs common, fossilif.

WS-PS, crm to off white, oolitic, sandy txt, co to fn-gr particles, hard, rare brn, f-xln, dense, some dull fluor, NS

SH, blk, gray

MS, crm, f-xln, earthy txt, firm to hrad, mostly dense, rare oolitic pcs, m-gr, tan to crm.

MS, crm to tan, A.A, some gritty/sandy txt,

SH, gray

MS, crm to lt. gray, f-xln, firm to hard, some f-gr oolitic pcs scatt., rare chalky matrix

MS, crm, A.A., rare motled mpcs, calcite
SH, gray, green/brn striated pcs

MS, some rare WS, crm to off white/tan, f-xln, to earthy txt, sli. gritty in part, hard, scatt chalky pcs, rare fossilif gray pcs w/ black inclusions
Chert, white, opaque, fossils

MS, A.A., some fossil fragments, mineral fluor, NS
SH, gray, green, red

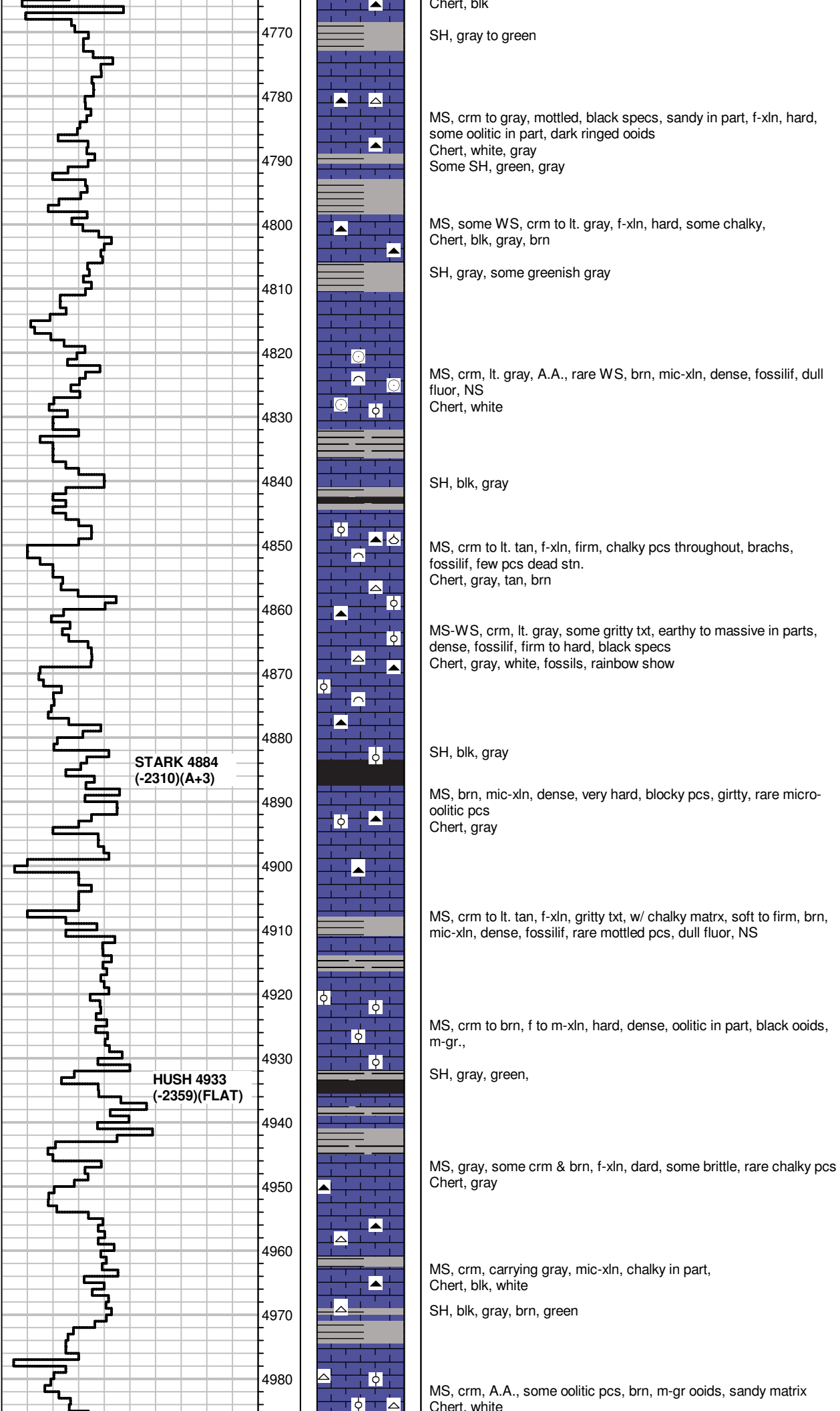
MS, gray to crm, f-xln, fossils
Chert, blk, brn, fossilif.

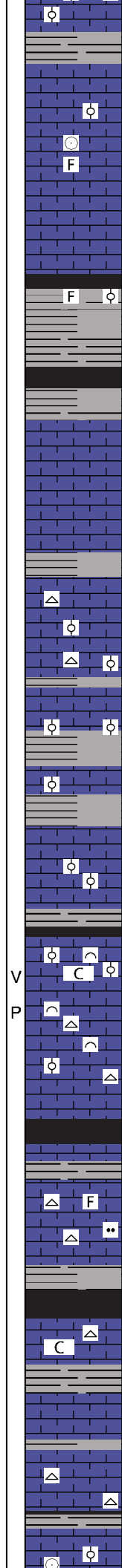
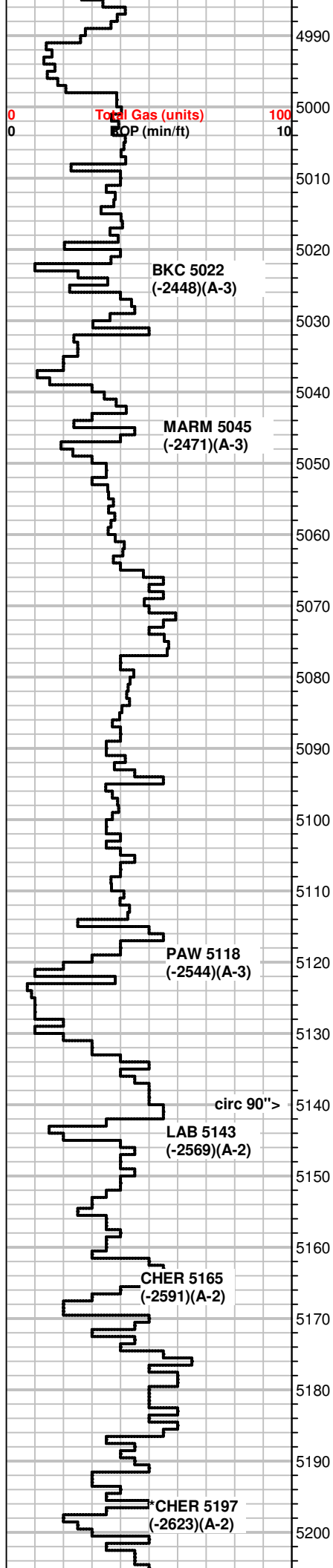
SH, blk, dk gray, green,

MS, crm to lt. gray, f-xln, firm to hard, some chalky

+16 Unit Gas Kick

+17 Unit Gas Kick





SH, gray, blk, brn
 MS, crm to off white, chalky, oolitic in part, some pyrite

MS, crm to gray, shaly, mottled, gritty txt, some f-xln, dense, rare fossils, calcite pcs

MS, gray to lt. brn, A.A.,
 SH, gray to dk. gray

MS, gray to crm, f-xln, some m-xln, silty txt, hard
 Chert, gray, blk, fossils
 Some SH, gray, dk. gray

MS, A.A., Influx SH, gray, dk. gray, blk

SH, gray
 MS, crm to gray, f-xln, firm, silty, rare oolitic pcs, dark f to m-gr ooids

MS, crm, vf-xln, dense, NS

MS, crm to lt. gray, f-xln, sli. silty in part, m-xln, dense, sub-oolitic pcs scatt., rare min fluor, NS
 Chert, white,

MS, brn to tan, some crm, f-xln, mostly dense, crm pcs chalky matrix
 SH, blk, green, gray, silty, striated

WS-PS, crm to off white, co-gr, ringed ooids, fossils, MS, crm f-xln, A.A.
 SH, gray, green

MS, crm, f-xln, firm, sli. chalky matrix, fossilif, brachs, coral
 Some SH, gray

WS-PS, crm to tan, f-xln, some chalky, rare gritty pcs

SH, rare blk, gray, green, some pyrite

MS, crm to tan, f-xln, hard, vuggy por visible, scatt micro oolitic particles in chalky matrix,
 MS-WS, crm to brn, f-xln, mottled pcs, fossil fragments, faint odor in bag, mineral fluor, 2 pcs dead stn, no cut, pp, vuggy por.
 Chert, white

MS-WS, crm to brn, mottled pcs, oolitic to micro oolitic pcs, chalky matrix, rare mineral fluor, NS

SH, blk, gray, green
 MS, brn to crm, massive txt, dense, Chert, white

MS, crm to tan, some lt. gray, f-xln, hard, fossils, silty txt in gray pcs, Chert, white, fossilif.

SH, blk, dk. gray

MS-WS, brn to crm, silty to chalky matrix, sub oolitic pcs, calcite, Chert, white, micro-oolitic
 SS clusters, white, green, fn-gr, well sorted, friable, some gas bubbles, no stain, very faint cut(1pc), bright fluor in matrix
 some SH, blk, gray
 MS-WS, A.A., rare mineral fluor, NS

WS-PS, crm to brn, co-gr oolitic, some pcs fossilif, hard, Chert, tan, white, oolitic

SH, brn, gray

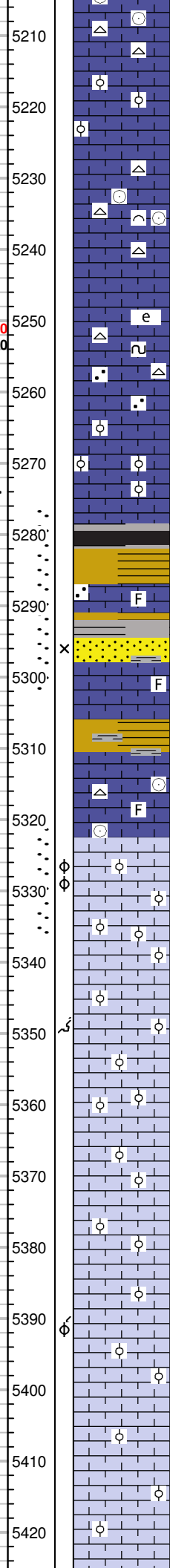
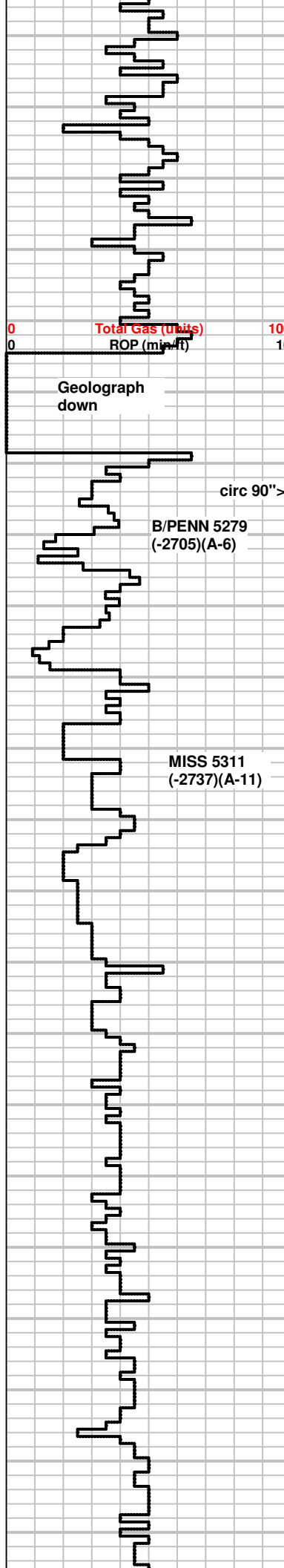
MS-WS, tan to brn, some gray, mostly w/ xln matrix, dense, hard, fossilif

**+29 Unit Gas Kick
 Shale gas**

**+18 Unit Gas Kick
 Shale gas**

Gas detector down

Detector Working



5210 fossilif, crinoids
MS-WS, A.A., some sub oolitic to micro oolitic pcs, Chert, white, tan, oolitic, SH, gray

5220 MS, brn to crm, f-xln, firm, dense, some partially oolitic, gritty txt, fossilif pcs throughout. SH, blk, gray, green

5230 MS-WS, crm to brn, xln matrix, m-gr oolitic pcs, dense, hard, Chert, white, fossilif SH, blk, brn, gray

5240 MS-WS, brn to tan, m-xln to gritty txt, some pcs oolitic, dense in part.

5250 MS-WS, brn to crm, f-xln, to earthy, firm to hard, barren, Dull fluor, NS, Chert, tan, oolitic

5260 MS, brn, gray, crm, mottled, sandy txt, fossilif, glauc, Chert, white, tan
Some SH, dk, gray

5270 MS, crm to brn, f-xln, dense, fossilif, some sub oolitic pcs scatt, barren, NS

5280 SH, sea green to blk and gray, some sandy

5290 MS, crm to gray, f-xln to gritty txt, dense, barren, some oolitic in part, fossilif.

5300 SS Clusters, green, gray, white, f-gr, sell sorted, friable, bleeding gas(2 pcs), faint odor, no stain

5310 MS, crm to brn, f-xln, dense, firm to hard, some fossils, poor samples
MS, crm to brn, A.A, dense, xln, matrix, some calcite
Some SH, vari colored, sandy/silty pcs throughout, poor samples!

5320 MS, crm to off white, f-xln, firm, flaky, brittle pcs, some dense, mottled pcs scatt, fossils(crinoids), dull fluor, NS, Chert, white, fray, fossilif., poor samples!

5330 WS-PS, off white, some rare brn, oolitic, m-co.oolites in gritty to chalky matrix. some pcs bright fluor in matrix, stn in pore space only(spotty), slow milky cut out of few pcs, fair odor in bag, Rare Chert, brn, gray, blocky, fossilif.,

5340 WS-PS, crm to brn, some xln matrix, tite, oolitic/fossilif. hard, dull fluor, NS
Chert, oolitic

5350 WS, crm to off white, some gray-ish white, m to f-gr oolitic, glauc, chalky matrix, some hard
Chert, oolitic, fossilif.

5360 WS, crm to off white, mic to f-cr oolitic, firm, glauc, some pcs w/ chalky matrix, gray pcs w/ micro oolitic txt, some co gr ooid inclusions

5370 PS, crm, off white, micro oolitic w/ chalky matrix, rare brn m oolitic pcs, dense, dull fluor, NS

5380 WS, crm to off white, f to m-oolitic, black specs(magnetite), rare glauc, firm to hard, some pcs friable, dull fluor, 1 pc streaming cut when broke.
Chert, white, fossilif.

5390 WS, crm to off white, f to m-gr oolitic A.A, some ringed ooids, m-gr, hard, xln matrix, rare chalky pcs, dull fluor, NS
scatt Chert, opaque, oolitic

5400 WS-PS, off white to crm, micro oolitic, co gr ooids, fossil fragments, hard to firm, dull fluor, NS
Chert, gray, brn, orange on pcs on PS

5410 WS, off white, m to co-gr oolitic pcs, xln matrix, hard, some rare chalky matrix, fossil frgments,

5420

DST #1 5277-5302
30-60-45-90
FB, BOB/8"
NBB
WB BOB/19"
1" BB
350' GIP
REC:
62' GOMCW (5g,5o,10m,80w)
40' GOMCW (5g,12o,14m,69w)
744' Water
IH 2708#
IF 52-264#
ISIP 690#
FF 260-458#
FSIP 692#
FH 2587#
CL 55000
Rw .15 @ 62°F
Temp 122°F

+46 Unit Gas Kick

+112 UGK, no recycle, Trip gas??

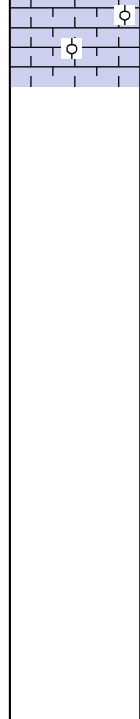
+70 UGK, 35 Unit recycle
DST #2 5321-5337
30-60-60-90
FB, BOB/8" NBB
WB, BOB/40" NBB
332' GIP
REC: 40' SOCM
IH 2777#
IF 26-27# ISIP 915#
FF 27-40# FSIP 835#
FH 2668#
TEMP 118°F

+36 Units, no recycle

Geolograph not marking

RTD 5430
2:55 PM
July 15, 2014

5430
5440
5450
5460
5470
5480
5490



WS-PS, predominately off white, crm to lt. tan, some brn, f-xln matrix, oolitic A.A, some partially broken ooids, ringed texture in x-section, NS, Chert, tan, gray, lots of SH coming in...cavings

feet correctly near bottom of hole!
Geolograph read 5430 but drill time had marks for 4 extra feet