

Tim J. Lauer

Petroleum Geologist

Office 316.832.0530
Cell 316.253.1275

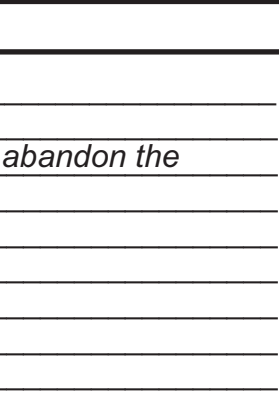
GEOLOGIST'S REPORT

DRILLING TIME AND SAMPLE LOG

COMPANY	Coral Production Corporation		
LEASE	#10-1 Hooper Trust		
FIELD	WC		
LOCATION	850' FSL, 2450' FEL, SE/4		
SEC	10	TWSP	7s RGE 18w
COUNTY	Rooks	STATE	Kansas
CONTRACTOR	Discovery Drilling Rig #2		
SPUD	10-18-2014	COMP	10-25-2014
RTD	3498'	LTD	3498'
MUD UP	2600'	TYPE MUD	Chemical
SAMPLES SAVED FROM	2700' TO RTD		
DRILLING TIME KEPT FROM	2700' TO RTD		
SAMPLES EXAMINED FROM	2700' TO RTD		
GEOLOGICAL SUPERVISION FROM	2506' to RTD		
GEOLOGIST ON WELL	Tim J. Lauer		

ELEVATIONS	KB 1904'
DF	
GL	1896'
Measurements Are All From	Kelly Bushing
CASING	
CONDUCTOR	
SURFACE	8-5/8" @ 1366'
PRODUCTION	none
ELECTRICAL SURVEYS	
Nabors JON Sonic Log (Engnr: Jason Cappellucci)	

FORMATION TOPS	ELECTRIC LOG	SAMPLE LOG
Anhydrite	1362 (+542)	1360 (+544)
Topeka	2869 (-965)	2869 (-965)
Heebner	3077 (-1173)	3079 (-1175)
Toronto	3101 (-1197)	3101 (-1197)
Lansing	3118 (-1214)	3118 (-1214)
Base Ks. City	3343 (-1439)	3345 (-1441)
Arbuckle	3479 (-1575)	3480 (-1576)
Total Depth	3498 (-1594)	3498 (-1594)



ELEVATIONS
KB 1904'
GL 1896'
STATE Kansas
COUNTY Rooks
SEC 10 TWSP 7s RGE 18w
LOCATION 850' FSL, 2450' FEL, SE/4
COMPANY & WELL Coral Prod Corp #10-1 Hooper Trust

REMARKS

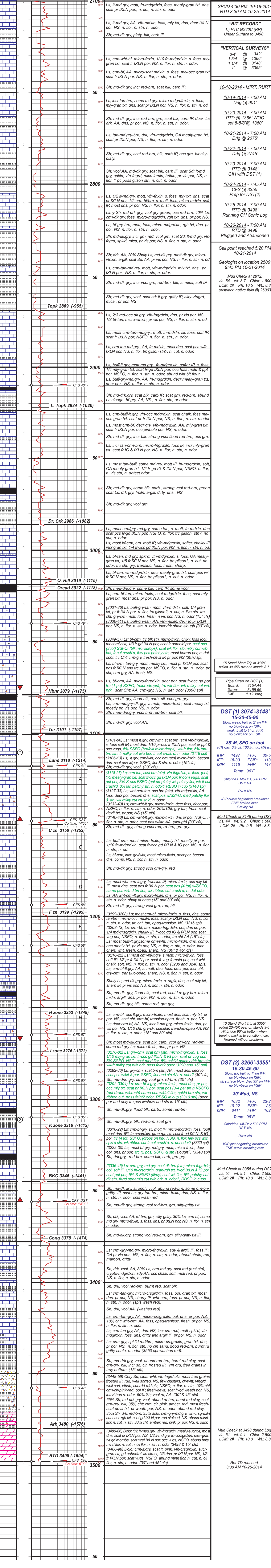
Due to sample evaluation and DST results, the operator elected to abandon the location without any further testing.

Respectfully submitted,

Tim J. Lauer
Tim J. Lauer
10-26-2014

LEGEND

	Anhydrite		Sandstone		Limestone		Shale		Carb Sh		Cherty LS		Chert		Dolomite
--	-----------	--	-----------	--	-----------	--	-------	--	---------	--	-----------	--	-------	--	----------



15 Stand Short Trip at 3148' pulled 30-45K over on stands 3-7

Pipe Strap on DST (1)
Board: 3154.44'
Strap: 3155.56'
Diff: 1.12' long

DST (1) 3074'-3148'
15-30-45-90
Blow: weak, built to 2" on IFP
no blowback on ISIP;
weak, built to 1" on FFP;
no blowback on FSIP

85' M, SFO on tool
(0% gas, 0% oil, 100% mud, 0% wtr)
IHP: 1497 FFP: 30-56
IFP: 18-33 FSIP: 1133
ISIP: 1116 FHP: 1471
Temp: 96°F
Chlorides MUD: 1,500 PPM
DST: NA
Rw = NA
ISIP just beginning breakerover
FSIP curve breaking over.

Mud Check at 3148 during DST:
vis: 44 wt: 9.2 Chlor: 1,500
LCM: 2# Ph: 10.5 WL: 8.8

10 Stand Short Trip at 3355' pulled 20-45K over on stands 3-6
Hit knide 9' off bottom when tripping back in to condition hole.
Reamed without problems.

DST (2) 3266'-3355'
15-30-45-60
Blow: weak, built to 1" on IFP;
no blowback on ISIP;
wk surface blow, died 35" on FFP;
no blowback on FSIP

30' Mud, NS
IHP: 1632 FFP: 23-28
IFP: 19-22 FSIP: 850
ISIP: 841' FHP: 1626
Temp: 98°F
Chlorides MUD: 2,500 PPM
DST: NA
Rw = NA
ISIP just beginning breakerover
FSIP curve breaking over.

Mud Check at 3355 during DST:
vis: 51 wt: 9.1 Chlor: 2,500
LCM: 2# Ph: 10.0 WL: 8.8

Rot TD reached
3:30 AM 10-25-2014

COMPANY & WELL	Coral Prod Corp #10-1 Hooper Trust		
LOCATION	850' FSL, 2450' FEL, SE/4		
SEC	10	TWSP	7s RGE 18w
COUNTY	Rooks	STATE	Kansas

ELEVATIONS	KB 1904'
GL	1896'

