

GEOLOGIST'S REPORT
DRILLING TIME AND SAMPLE LOG

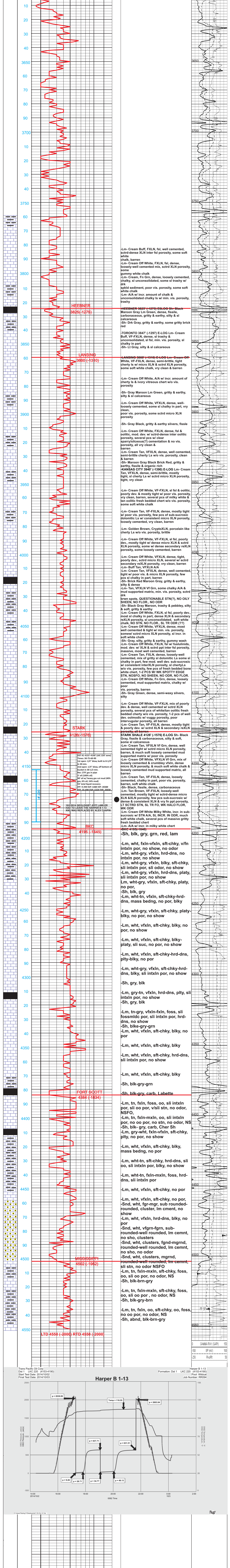
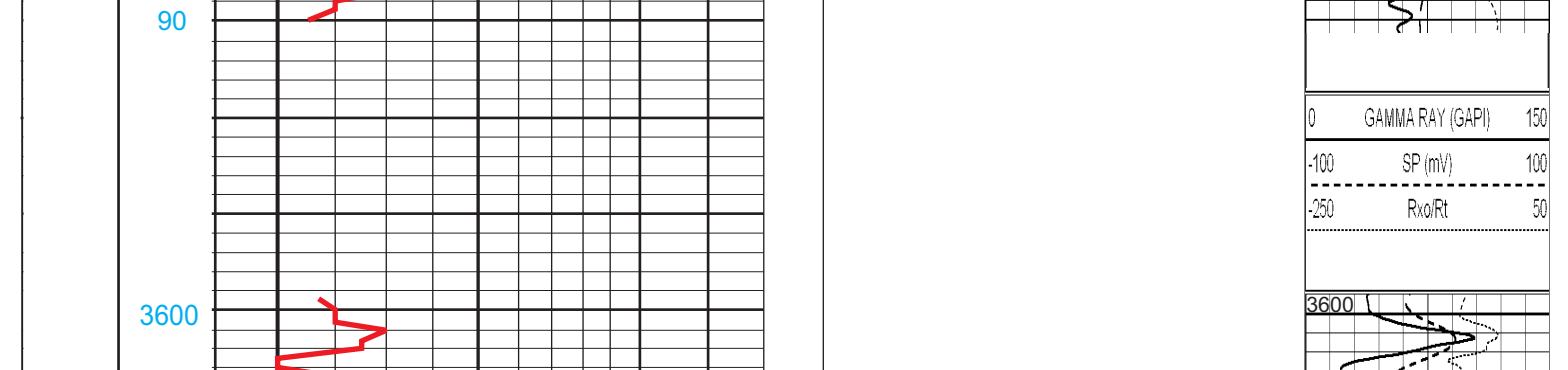
Geologist on Well: Alex Chaplin & Jeff Lawler
 LEASE: Harper B 1-13
 FIELD: Repshire
 LOCATION: 181° 5' N & 165° 7' W
 SEC: 13 T1MSP 17S R0E 27W
 COUNTY: Lane STATE: Kansas
 CONTRACTOR: Duke Drilling Rig #2
 SUND: 9/26/14 COMP: 10/5/13

RD: 4350 LTD 4350
 MUD UP: TYPE MUD: CHEMICAL
 SAMPLES SAVED FROM: 3750 TO RTD
 DRILLING TIME KEPT FROM: 3600 TO RTD
 SAMPLES EXAMINED FROM: 3900 TO RTD
 GEOLOGICAL SUPERVISION FROM: 3000
 REFERENCE WELL: Douglas #1, Sec-13-17S-27W
 FORMATION: **PIONEER**
 Sample Tops: E-log Tops
 Formation: Sample Tops E-log Tops
 Anthydrite: 1949 (+601) 1949 (+601) -3
 Base Anthydrite: 1982 (+568) 1981 (+569) -4
 Heebner: 3825 (+1275) 3825 (+1275) -4
 Lansing: 3860 (+1310) 3867 (+1317) -4
 Stark: 4124 (+1574) 4124 (+1574) -5
 BKC: 4195 (+1645) 4194 (+1644) -5
 Fort Scott: 4384 (+1834) 4384 (+1834) -10
 Mississippian: 4502 (+1952) 4502 (+1952) -36

CONDUCTOR: SURFACE: 8 5/8" @ 263'
 PRODUCTION: 4 1/2" @ 433'
 ELECTRICAL SURVEYS: From Kelly Bushing
 CASINGS: 9 2/2" / 14

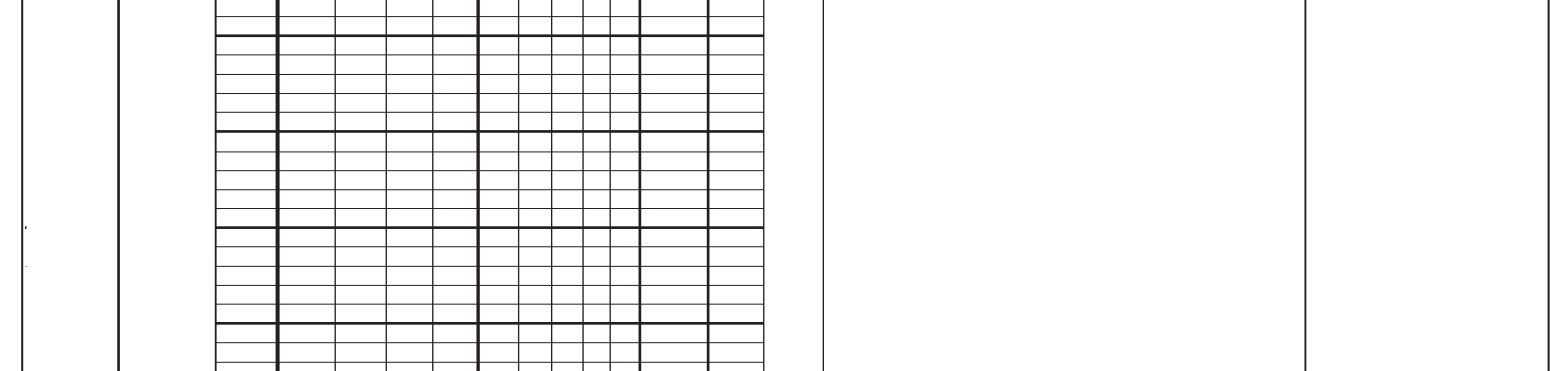
REMARKS: Due to the positive drill stem test and the good porosity of the Lansing 220' zone it was decided to run production pipe.

LEGEND



Trans Pacific Oil Corp
 Oct 1 LXC 220 (4153,4190)
 Start Test Date: 2014/10/02
 Final Test Date: 2014/10/03

Harper B 1-13



Harper B 1-13
 LXC 220 (4153,4190)
 Pool: Wildcat
 Job Number: RR094

