

JUSTIN D. CARTER

CONSULTING GEOLOGIST

Scale 1:240 (5"=100') Imperial
Measured Depth Log

Well Name: CHENOWETH FARM 30-1
Location: SE, SE, SE Sec. 30 - 6S - 23W Graham Co, KS
License Number: 15-065-24049-0000
Spud Date: 07/22/14
Surface Coordinates: 330' FSL & 330' FEL
Region: White Northwest
Drilling Completed: 07/27/14

Bottom Hole 263': 3/4 DEG, 3892': 3/4 DEG
Coordinates:
Ground Elevation (ft): 2460' K.B. Elevation (ft): 2468'
Logged Interval (ft): 3400' To: 3975' Total Depth (ft): 3975'
Formation: L/KC
Type of Drilling Fluid: Chemical Mud

Printed by WellSight Log Viewer from WellSight Systems 1-800-447-1534 www.WellSight.com

OPERATOR

Company: CHISOLM PARTNERS II, LLC
Address: 1010 10th St.
Golden, CO 80401
Co. Geo.: Mr. John Horne

GEOLOGIST

Name: Justin D. Carter
Company: Consulting Geologist
Address: 1640 N. Roosevelt Ave.
Liberal, KS 67901
Home: 620-624-5876, Cell: 620-655-1187

Comments

Drilling Contractor: WW Drilling, LLC Rig #12
Tool Pusher: Calvin Pfannenstiel

8 5/8" surface casing set at 263'

Mud: MudCo
Engineer: Gary Schmidtberger

Gas Detector: Earth Tech OGL, Inc.

DSTs: Trilobite Testing
Tester: Ray Schwager

Open-Hole Loggers: Pioneer Wireline



TRILOBITE TESTING, INC.

DRILL STEM TEST REPORT

Wildhorse Partners II LLC
 300N. Cedar
 Suite 101
 Abilene Ks 67410
 ATTN: Richard McKee, Just

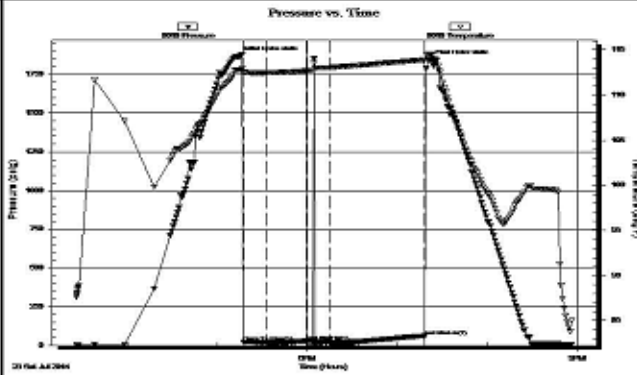
30-6s-23w Graham
Chenoweth Farm 30-1
 Job Ticket: 58834 **DST#: 1**
 Test Start: 2014.07.26 @ 15:25:54

GENERAL INFORMATION:

Formation: **LKC H-J**
 Deviated: No Whipstock: ft (KB)
 Time Tool Opened: 17:17:19
 Time Test Ended: 20:56:48
 Interval: **3865.00 ft (KB) To 3892.00 ft (KB) (TVD)**
 Total Depth: 3892.00 ft (KB) (TVD)
 Hole Diameter: 7.85 inchesHole Condition: Fair
 Test Type: Conventional Bottom Hole (Initial)
 Tester: Ray Schwager
 Unit No: 70
 Reference Elevations: 2468.00 ft (KB)
 2460.00 ft (CF)
 KB to GR/CF: 8.00 ft

Serial #: 8018 Inside
 Press@RunDepth: 22.70 psig @ 3866.00 ft (KB) Capacity: 8000.00 psig
 Start Date: 2014.07.26 End Date: 2014.07.26 Last Calib.: 2014.07.26
 Start Time: 15:25:54 End Time: 20:56:48 Time On Btm: 2014.07.26 @ 17:13:49
 Time Off Btm: 2014.07.26 @ 19:21:49

TEST COMMENT: 15-IFP-few bubbles, then dead thru-out
 30-ISIP-no bl
 15-FFP-no bl, flushed tool
 60-FSIP-no bl



Time (Min.)	Pressure (psig)	Temp (deg F)	Annotation
0	1862.03	112.80	Initial Hydro-static
4	22.83	112.56	Open To Flow (1)
19	20.57	112.45	Shut-In(1)
46	29.20	112.69	End Shut-In(1)
46	29.50	112.69	Open To Flow (2)
62	22.70	113.06	Shut-In(2)
125	61.19	113.89	End Shut-In(2)
128	1840.02	114.52	Final Hydro-static

Length (ft)	Description	Volume (bbl)
1.00	MUD	0.00

Choke (inches)	Pressure (psig)	Gas Rate (Mcf/d)

Trilobite Testing, Inc

Ref. No: 58834

Printed: 2014.07.26 @ 21:08:50

Remarks

After careful review of the sample log, electric logs, and DST reports, the decision was made to P&A the Chenoweth Farm 30-1.

Respectfully submitted,

Justin D. Carter
 Consulting Geologist

TOP ANHYDRITE 2149' (+319')

BASE ANHYDRITE 2183' (+285')

DEPTH BREAK

DISPLACE HOLE @ 3257'

GEOLOGIST ON LOCATION 10:00 P.M. 07/24/14

NOTE: SHIFT GAMMA DOWN 7' TO CORRELATE WITH DRILL TIME

BIT #2
SMITH 7 7/8"
F271Y
S/N: RA9953
2/14s, 15
IN @ 263'

LS- CRM, HRD DNS, VF-XLN, RE-XLN MTRX THRU, TR CALC XLS, NO FLO, TR MICRO PP POR TO NO VIS POR THRU, NS

CN

LS- LT GY, HRD, VF-XLN, SUB-SUCRO MTRX THRU, IMBED DK GYOOL THRU, NO FLO, NO VIS POR

5 U BG

SH- GRN GY, FRM, BLKY, SLTY

LS- LT GY CRM, HRD, VF-XLN, RE-XLN MTRX THRU TO TR SUB-SUCRO MTRX, DK GY IMBED FOSS FRAGS SCAT THRU, NO FLO, NO VIS POR

CN

LS- CRM BFF, HRD DNS, VF-XLN, RE-XLN MTRX THRU, TR IMBED OOL, NO FLO, TR INTER-XLN POR TO NO VIS POR THRU, NS

LS- CRM, HRD DNS, VF-XLN, RE-XLN MTRX THRU, TR IMBED FOSS FRAGS, NO FLO, NO VIS POR

CN

TOPEKA 3496' (-1028')

2150

2200

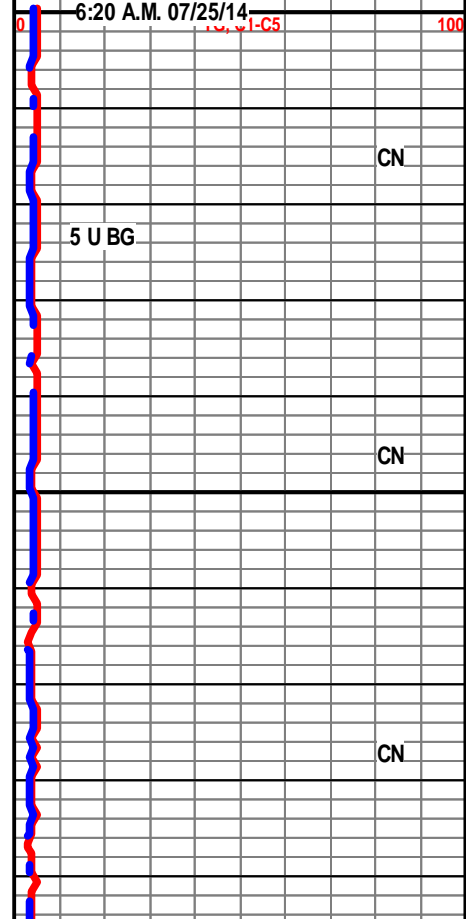
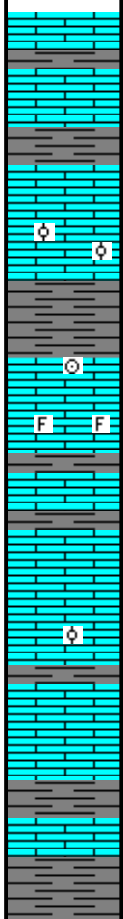
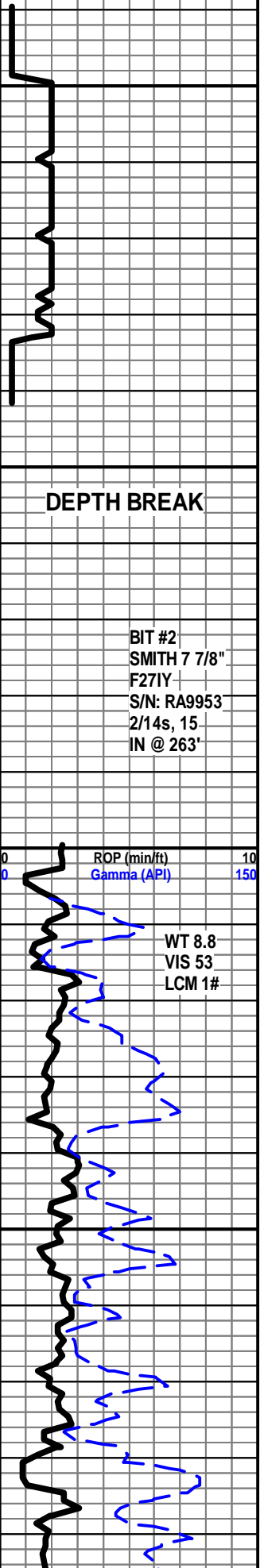
3400

3450

ROP (min/ft) 10
Gamma (API) 150

WT 8.8
VIS 53
LCM 1#

6:20 A.M. 07/25/14
100



T.O.H. @ 3726' FOR HOLE IN PIPE

TORONTO 3725' (-1257')

LS- OFF WHT, HRD DNS, VF/CRYPTO-XLN, RE-XLN MTRX THRU, NO FLO, NO VIS POR

L/KC 3736' (-1268')

LS- OFF WHT, HRD TO BRITT IP, VF-XLN, GRST, ABDT OOL THRU, NO FLO, FR INTER-OOL POR THRU, NS

LS- LT CRM, HRD DNS, VF-XLN, RE-XLN MTRX IP, NO FLO, NO VIS POR

LS- BFF, HRD DNS, VF-XLN, RE-XLN MTRX THRU, TR OOL, TR OOLICASTS, DLL YEL FLO IN 20%, FR FLUSH TO FR BLU STRM CUT, PR OOMLD POR IP, TN LEACH ON DISH, BLK RESIDUAL STAIN IN 50%, NO ODOR, NO FREE OIL

LS- LT GY, HRD, VF-XLN, RE-XLN MTRX IP, TR IMBED OOL, TR OOLICASTS/VUGS, BRIT YEL. GLD FLO IN 40%, FR FLUSH TO FR FAST BLU STRM CUT, BRN LEACH ON DISH, TR OOMLD/VUG POR TO NO VIS POR IP, BLK RESIDUAL STAIN IN 40%, FAINT ODOR, NO FREE OIL

LS- CRM, HRD DNS, CRYPTO-XLN, RE-XLN MTRX IP, NO FLO, NO VIS POR

LS- CRM BFF, HRD DNS, VF/CRYPTO-XLN, RE-XLN MTRX IP, NO FLO, NO VIS POR

SH- DK GY GRN, FRM, BLKY, SLTY, SLTST IP

LS- CRM BFF, HRD DNS, VF-XLN, RE-XLN MTRX IP TO TR SUB-SUCRO MTRX, IMBED OOL IP, DLL YEL GLD FLO IN 80%, PR FLUSH TO FR SLO BLU STRM CUT, PR INTER-OOL POR IP TO NO VIS POR IP, BRN STAIN IN 70%, NO ODOR, NO FREE OIL

LS- BFF CRM, HRD TO BRITT IP, F/VF-XLN, GRST TO TR RE-XLN MTRX, ABDT IMBED OOL THRU, YEL GLD FLO IN 90%, GD FLUSH TO FR BLU STRM CUT, FR INTER-OOL POR SCAT THRU, BRN STAIN IN 50% TO TR LIVE OIL STAIN, FAINT ODOR

STRAP OUT @ 3892', 0.96' LONG TO BOARD

LS- CRM WHT, HRD, VF-XLN, RE-XLN MTRX IP TO SUB-CHLKY MTRX IP, IMBED OOL IP, YEL GLD FLO IN 60%, FR FLUSH TO FR BLU STRM CUT, PR INTER-OOL POR IP, BLK RESIDUAL STAIN IP TO TR TN STAIN, FAINT ODOR, TR "TARRY" OIL

LS- CRM, HRD DNS, CRYPTO-XLN, RE-XLN MTRX IP, NO FLO, NO VIS POR

BKC 3930' (-1462')

10 U TRIP GAS

CN

12:00 A.M. 07/26/14

CN

CN

TG, C1-C5

100

CN

10 U SHALE GAS

CN

13 U SHOW

CN

12:00 A.M. 07/27/14

MUD CHECK @ 3892'

WT 9.0

VIS 56

LCM 1#

PV 11

YP 27

PH 10.5

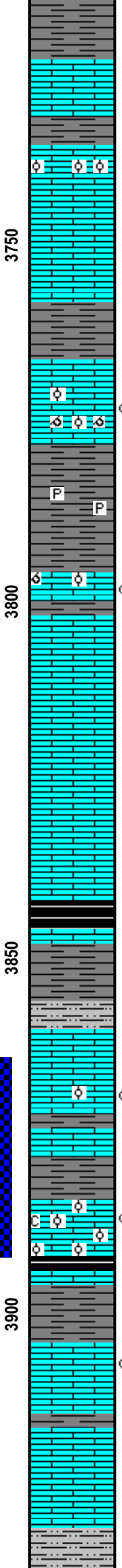
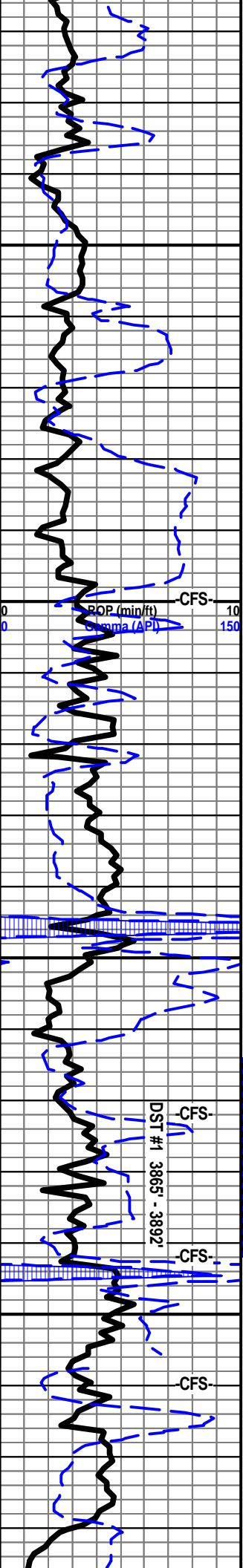
FIL 7.8

CAL TR

CHL 500

CN

11 U SHOW

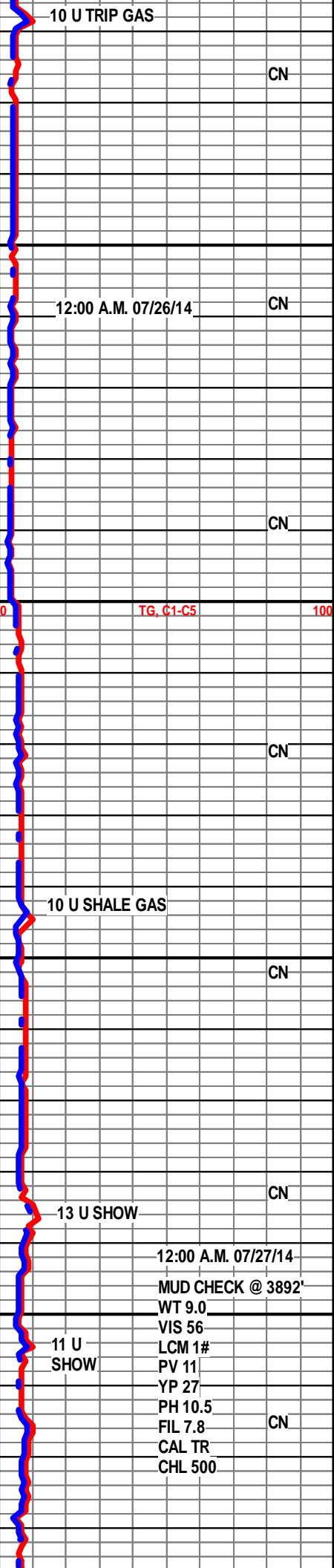


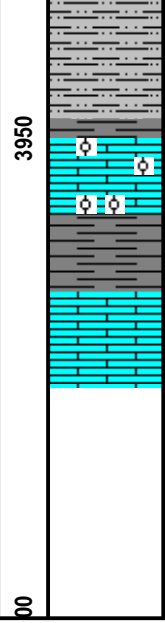
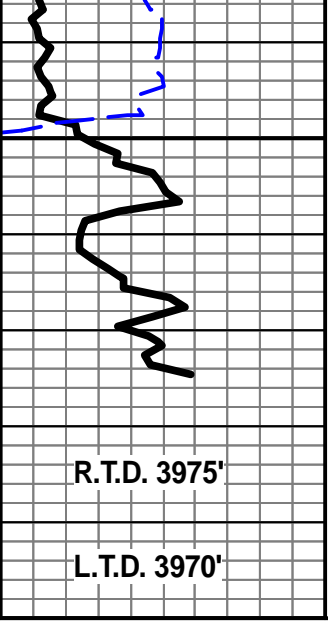
3750

3800

3850

3900





SLTST- RD, TT, F-GRN, GD SRT, NO VIS POR

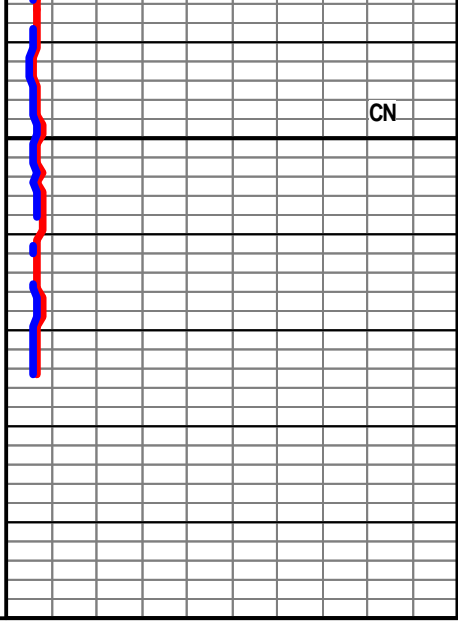
LS- RDISH CRM, HRD DNS, VF-XLN, SUCRO MTRX THRU TO TR RE-XLN MTRX, NO FLO, NO VIS POR

LS- GY CRM, HRD DNS, VF-XLN, SUCRO MTRX IP TO RE-XLN MTRX IP, NO FLO, NO VIS POR

TD @ 4:40 A.M. 07/27/14

CTCH 1 1/2 HR.

FINISH E-LOGS 11:30 A.M. 07/27/14



R.T.D. 3975'

L.T.D. 3970'

CN