



**Scale 1:240 (5"=100') Imperial
Measured Depth Log**

Well Name: Chain Ranch 'B' #3
Location: 1-31S-12W
License Number: API: 15-007-24237
Spud Date: 10/17/14
Surface Coordinates: 660' FNL, 1420' FEL

Region: Barber Co., KS
Drilling Completed: 10/23/14

**Bottom Hole
Coordinates:**
Ground Elevation (ft): 1682 **K.B. Elevation (ft):** 1692
Logged Interval (ft): 3000 **To:** 4505 **Total Depth (ft):** 4500
Formation: Kinderhook
Type of Drilling Fluid: Chemical

Printed by MUD.LOG from WellSight Systems 1-800-447-1534 www.WellSight.com

OPERATOR

Company: White Explortation, Inc.
Address: 1635 N. Waterfront Pkwy, St. 100
Wichita, KS 67206

GEOLOGIST

Name: Andrew White
Company: White Explortation, Inc.
Address: 1635 N. Waterfront Pkwy, St. 100
Wichita, KS 67206

Remarks

Due to negative sample shows, DST, and log analysis, the Chain Ranch 'A' #3 will be plugged and abandoned.

General Info

Drilling Contractor: Pickrell Rig 1

Logs: Pioneer
Compensated Density/Neutron, Dual Induction, Micro, Sonic

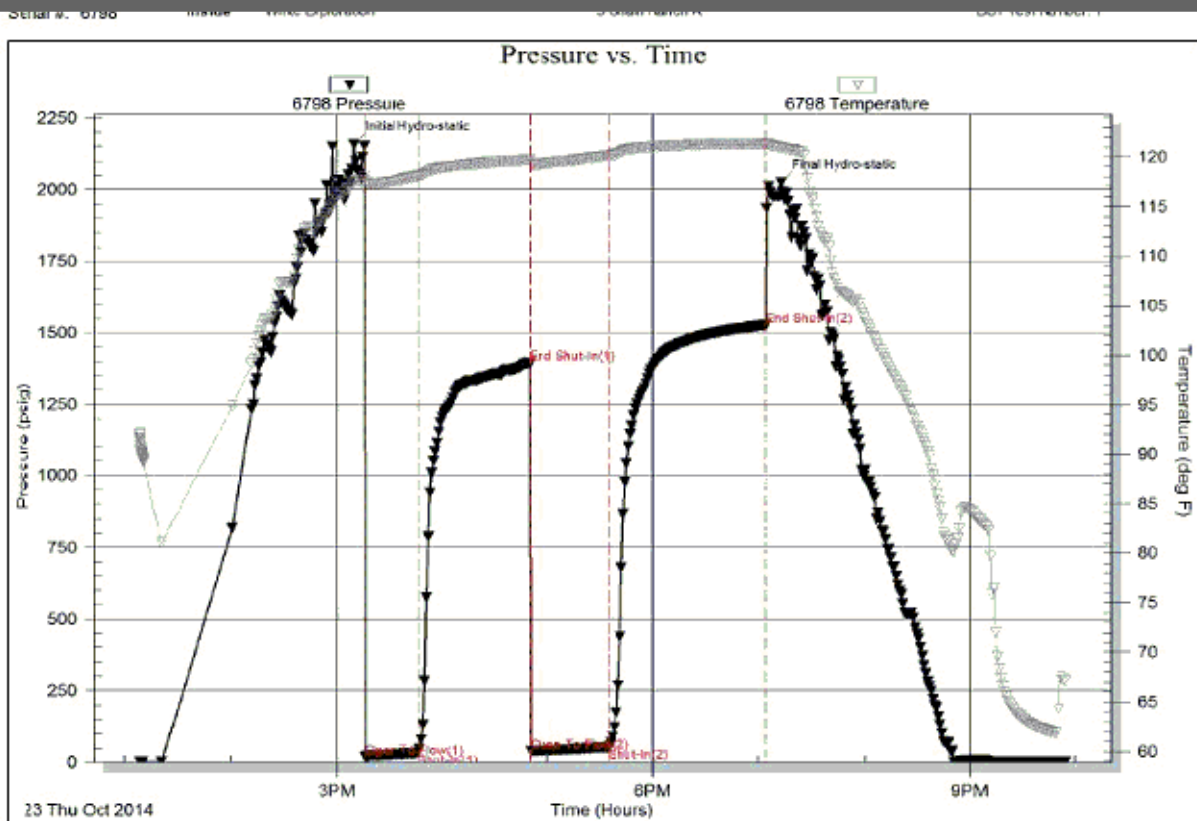
Drilling Mud: Mudco/Service Mud, Inc.

Surveys: 308'-3/4; 634'-1/4; 812'-1; 1317'-1; 2108'-1; 2929'-1; 4500' .75

Daily Status

10/17/14: MIRT, spud @ 4:15pm. Drill 12-1/4" surface hole to 308', ran 7 joints new 8-5/8" 24# L.S. Surface Casing, cemented with 190 sacks Class A Cement with 2%gel, and 3% CC
 10/18/14: Waiting on cement, drilled out @ 11:15am
 10/19/14: Drilling @ 1580'
 10/20/14: Drilling @ 2412'
 10/21/14: Drilling @ 3278'
 10/22/14: Drilling @ 4140'
 10/23/14: Logging Well, run DST #1
 10/24/14: Plugging Well, 170 sacks 60/40 Poz Mix, 4% gel; 50 sacks @ 660', 50 sacks @ 330', 20 sacks @ 60', 30 sacks in Mouse hole, 20 sacks in Rat hole

White Exploration, Inc.				White Exploration, Inc.		White Exploration, Inc.		R& B Oil	
Chain Ranch A #3				Chain Ranch B #1		Chain Ranch A #2		Chain Ranch #2	
Sec 1-31S-12W				Sec 1-31S-12W		Sec 1-31S-12W		Sec 31-30S-11W	
6600' FNL, 1420' FEL				475' FNL, 1916' FWL		2050' FNL, 330' FEL		660' FSL, 660' FWL	
KB: 1692				KB: 1655		KB: 1630		KB: 1758	
Sample	Log	Datum		Relationship		Relationship		Relationship	
Heebner	3602	3604	-1956	-7		+1		+12	
Brown Lime	3814	3814	-2166	-12		+1		+18	
Stark	4156	4160	-2512	-9		+5		+19	
Mississippian	4350	4364	-2716	-15		-13		+47	
Kinderhook	4426	4426	-2778	-2		+3		+24	



ROCK TYPES

LITHOLOGY

- Anhy
- Bent
- Brec
- Cht
- Clyst
- Black shale
- Congl

- Dol
- Gyp
- Igne
- Lmst
- Meta
- Mrlst
- Salt
- Shale

- Shcol
- Shgy
- Sltst
- Ss
- Till

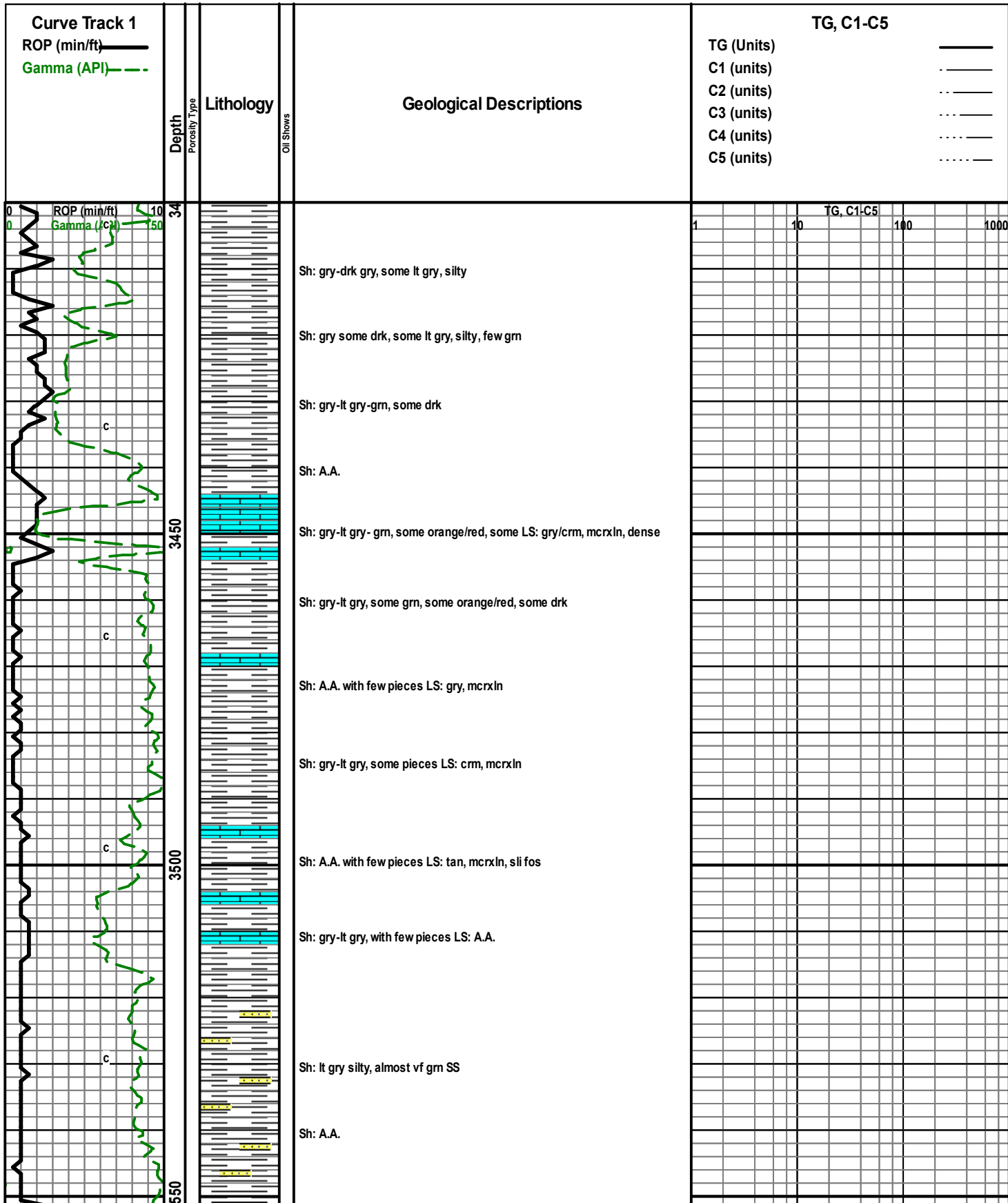
- STRINGER**
- Anhy

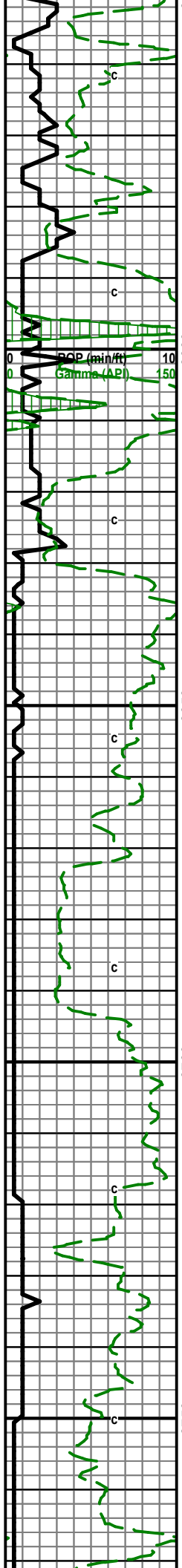
- Arg
- Bent
- Coal
- Dol
- Gyp
- Ls
- Mrst
- Sltstrg

- Ssstrg

OIL SHOW

- Even
- Spotted
- Ques
- Dead





Sh: A.A. with few LS: tan, sli crm, mcrxln

Sh: gry, some dark, some lt gry silty, some LS: crm, mcrxln, sli fos

Sh: gry, some drk some lt gry silty, LS: crm-tan, mcrxln

Sh: gry, some lt gry silty, some drk

Sh: A.A. more dark, and some blk, sli gas, LS: tan, mcrxln, sli fos

Sh: gry, some grn, some blk, some LS: tan-crm, mcrxln, sli fos

Sh: gry, some dark, LS: crm, some tan, mcrxln

Poor Sample

Sh: gry some dark, some LS: tan-crm, mcrxln fos in part

Sh: gry, some lt gry, silty, few pieces LS: crm, mcrxln, sli fos

Poor Samples from here down

Sh: gry, some lt gry silty, some dark, LS: crm-tan, mcrxln, fos

Sh: gry, lt gry silty, some LS: A.A.

Sh: gry, SS: clear-gry, silty in part, vf-f grn

Sh: A.A. and SS: A.A. with some LS: crm, mcrxln, sli fos

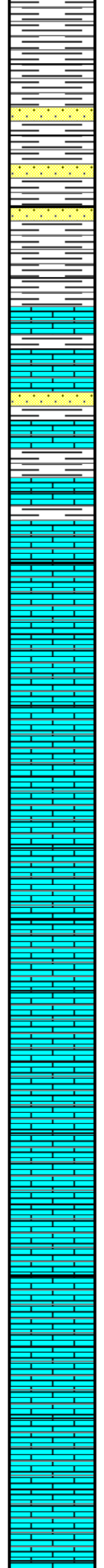
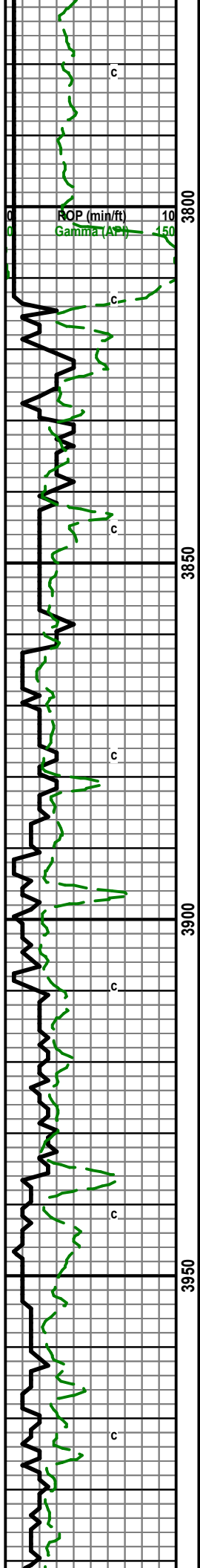
Poor Sample

Sh: gry, SS: clear, vf-f grn, sub ang, well sort some LS: crm-gry, mcrxln, fos

Sh and SS: A.A., LS: crm-gry, some tan, mcrxln, sli fos

Poor Sample

Heebner: 3602 (-1910)₁₀₀ 1000



Sh and SS: from above, LS: gry, some tan, mcrxln, fos

Same Sh and SS

Sh and SS, some LS: tan-brn, some crm, mcrxln, few fxln, fos

Poor Sample

Sh: and SS, LS crm, some tan, mcrxln, sli cherty, sli fos

LS: crm-gry, some tan, mcrxln few fxln, sli cherty, sli fos (Sh: gry, and SS: are still in samples)

LS: crm, sli tan, sli gry, mcr-fxln, fos

LS: crm-gry, mcr some fxln, sli cherty, fos

LS: tan, sli gry, mcrxln, sli cherty, fos

LS: tan/crm, some gry, mcrxln, sli chalky, sli fos

LS: crm, sli gry, some tan, mcr-fxln, fos

LS: crm/gry-tan, mcrxln, some f, sli cherty, sli fos

LS: tan, sli crm, mcrxln, sli chalky

LS: A.A. with brn, mcrxln, fos

LS: tan-brn, mcrxln, fos, sli chalky

LS: crm-tan, sli brn, mcr-fxln, sli chalky, sli fos

LS: tan, some crm/gry, mcrxln, sli fos, some chalk

LS: tan, fxln, some mcrxln, sli fos, sli cherty, sli chalky

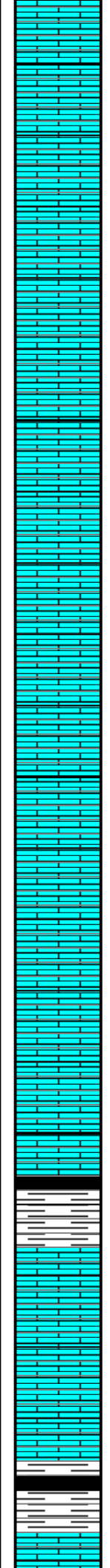
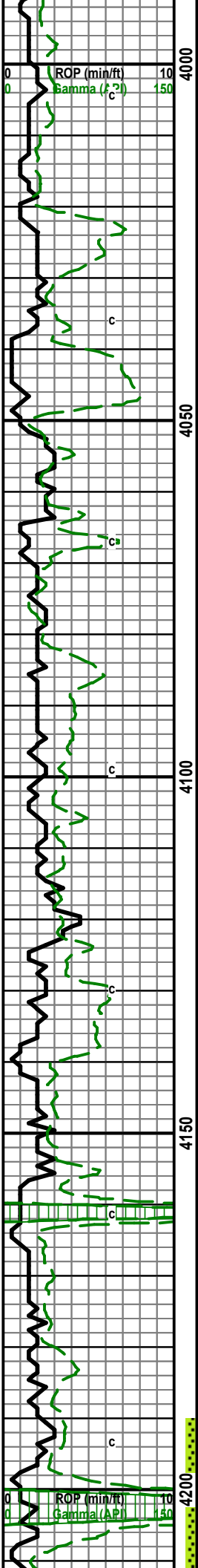
LS: crm/gry and some tan, fxln, some mcr, sli fos, sli chalk

LS: crm/gry, mcr-fxln, sli fos

LS: crm/gry, mcrxln, sli fos, sli chalky

TG, C1-C5
1 10 100 1000

Brown Lime: 3814 (-2122)



LS: crm/gry, mcrxln, sli fos, sli chalky

LS: gry, mcrxln, sli chalky, few pieces chert

LS: gry-crm, mcrxln, few f, sli fos, some chalk

LS: gry/crm-tan, mcr-fxln, sli fos, some chert

LS: tan, some gry-crm, mcrxln

LS: gry-crm, some tan, fxln, some mcr, chalky, sli fos

LS: crm, some tan/bm, mcrxln, few f, sli fos

LS: crm-gry, mcr-fxln, sli chalky, sli fos

LS: crm-tan, some gry, mcr-fxln, sli chalky, one piece ool

LS: gry-crm, some bm, mcrxln, some f, sli chalky, sli fos

LS: crm-gry, mcrxln, sli chalky, few pieces chert

LS: A.A.

LS: crm, some gry, mcrxln, some fxln, sli fos, few pieces chert, some chalk

LS: gry-crm, mcr-fxln, sli chalky, fos, some ool

LS: gry-crm, some tan, mcrxln, sli fos

LS: crm-tan, mcrxln, some f, sli chalk, sli fos

LS: tan-crm, f-mcrxln, sli chalky sli fos, few friable pieces with questionable dead oil show, some Sh: drk gry-bkck

LS: crm, sli gry, mcrxln, sli chalky, sli fos

LS: tan-crm, some gry, mcrxln few fxln, sli chalky, sli fos

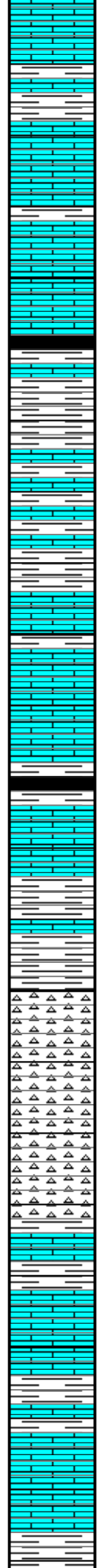
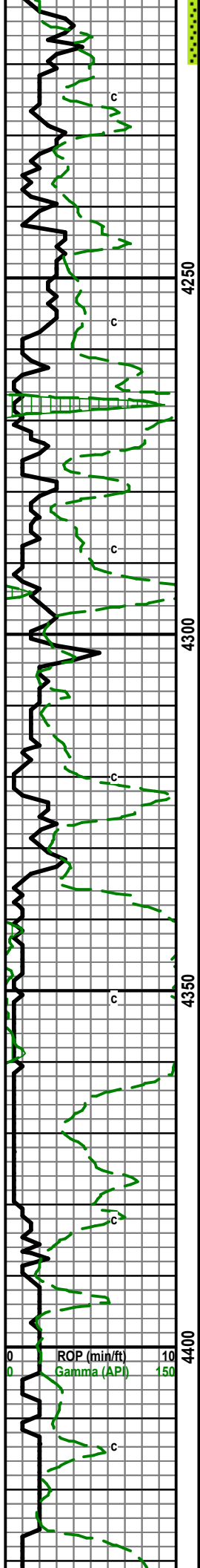
LS: A.A.

Sh: drk gry-bkck, LS: tan, sli crm, mcrxln, sli chalky, sli fos, ques odor

LS: tan-crm, some gry, fxln, some mcr, few pieces ool, few fos,

1	TG, C1-C5	10	100	1000
Stark: 4156 (-2464)				
Mudco mdck Wt: 9.4 Vis: 71 pH: 10.0 Fil: 10.8 LCM: 0				
DST #1 4190-4220' (Straddle)				
1	30-60-45-90-C5			1000
IF: Weak blow, built to 2"				
FF: Weak blow, built to 1"				
Rec: 65' MCW (90% W, 10% M)				

IFP: 19-33 ISIP: 1395
 FFP: 39-53 FSIP: 1527
 Bottom perms were plugged,
 straddle successful



questionable odor, no show

LS: gry-crm, mcrxln, some ool, Sh: gry

LS: gry, some crm, mcrxln, some f, few ool, Sh: gry

LS: crm-gry, some tan, mcrxln, few f, few pieces ool, some Sh: gry-lt gry

Sh: gry-lt gry, some drk, some LS: crm, mcrxln, sli fos, few ool

Sh: gry-drk gry, some lt gry, blk, some LS: crm-tan, mcrxln, sli fos, sli chert

Sh: gry-lt gry, some dark, LS: gry, sli crm, mcrxln, sli fos

Sh: lt gry, some gry, LS: crm, sli tan, mcrxln, sli fos, sli chert

Sh: A.A. LS: gry-crm, mcrxln, some f, fos

LS: gry, mcrxln, sli fos, some Sh: gry-lt gry with some drk

LS: gry-crm, mcrxln sli fos

Sh: gry, some lt, some drk-blck, some LS: crm, sli gry, mcrxln, sli cherty

Sh: A.A. with some gm, LS: crm-gry, mcrxln, sli cherty

LS: and Sh: A.A. with some Chert: trip, pos sli show gas, very faint odor, no fluor

Sample same A.A. with some vrr show oil in chert, sample contains a lot of red shale and gry-drk gry shale

Chert: white, trip, sli odor, sli show gas, dead oil stain, some tan, with no stain or show

Chert: A.A. with more fresh no show no stain, sample contains a good amount of Sh and LS: crm-tan, mcrxln, sli fos

LS: crm-tan, mcr-fxln, sli fos, some Sh: gry-lt gry, some drk

LS: crm-tan-gry, mcrxln-fxln, sli fos, some Sh: gry-drk gry,

Sample mostly LS: A.A. with some Sh: gry-drk gry, some lt gry

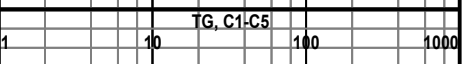
Miss: 4350 (-2658)

CFS 60 min

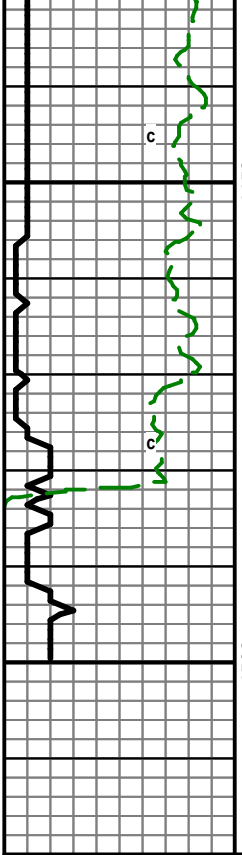
CFS 60 min

Work on Pump

CFS 60 min

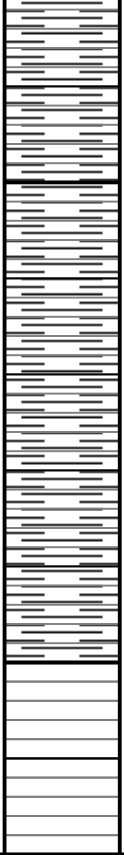


Kinderhook: 4426 (-2734)



4450

4500



Same A.A.

Sh: gry

RTD: 4500

LTD: 4505

