



TRILOBITE TESTING, INC.

DRILL STEM TEST REPORT

White Exploration
 1635 N Waterfront Pkwy Ste 100
 Wichita, KS 67206
 ATTN: Andy White

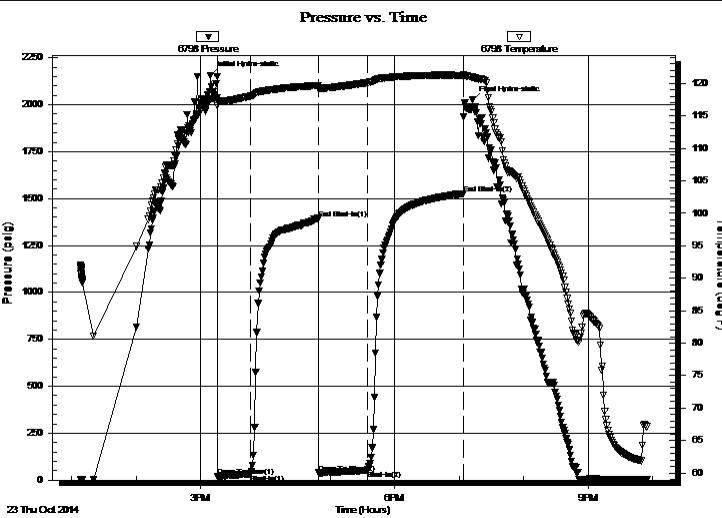
1-31S-12WBarber
3 Chain Ranch A
 Job Ticket: 57773 **DST#: 1**
 Test Start: 2014.10.23 @ 13:08:28

GENERAL INFORMATION:

Formation: **Hertha**
 Deviated: No Whipstock: ft (KB)
 Time Tool Opened: 15:15:43
 Time Test Ended: 21:54:28
 Interval: **4190.00 ft (KB) To 4220.00 ft (KB) (TVD)**
 Total Depth: 4500.00 ft (KB) (TVD)
 Hole Diameter: 7.88 inches Hole Condition: Good
 Test Type: Conventional Straddle (Initial)
 Tester: Leal Cason
 Unit No: 74
 Reference Elevations: 1692.00 ft (KB)
 1682.00 ft (CF)
 KB to GR/CF: 10.00 ft

Serial #: 6798 Inside
 Press @ Run Depth: 53.39 psig @ 4191.00 ft (KB) Capacity: 8000.00 psig
 Start Date: 2014.10.23 End Date: 2014.10.23 Last Calib.: 2014.10.23
 Start Time: 13:08:29 End Time: 21:54:28 Time On Btm: 2014.10.23 @ 15:09:13
 Time Off Btm: 2014.10.23 @ 19:12:13

TEST COMMENT: IF: Weak Blow , Built to 2 inches
 IS: No Blow Back
 FF: Weak Blow , Built to 1 inch
 FS: No Blow Back



PRESSURE SUMMARY

Time (Min.)	Pressure (psig)	Temp (deg F)	Annotation
0	2156.90	117.48	Initial Hydro-static
7	18.63	116.64	Open To Flow (1)
38	33.19	118.06	Shut-In(1)
100	1394.99	119.68	End Shut-In(1)
101	38.71	119.14	Open To Flow (2)
146	53.39	120.12	Shut-In(2)
235	1527.16	121.23	End Shut-In(2)
243	2024.26	120.97	Final Hydro-static

Recovery

Length (ft)	Description	Volume (bbl)
65.00	MCW 10%M 90%W	0.91

Gas Rates

Choke (inches)	Pressure (psig)	Gas Rate (Mcf/d)



**TRILOBITE
TESTING, INC.**

DRILL STEM TEST REPORT

White Exploration

1-31S-12WBarber

1635 N Waterfront Pkwy Ste 100
Wichita, KS 67206

3 Chain Ranch A

Job Ticket: 57773

DST#: 1

ATTN: Andy White

Test Start: 2014.10.23 @ 13:08:28

GENERAL INFORMATION:

Formation: **Hertha**

Deviated: No Whipstock: ft (KB)

Time Tool Opened: 15:15:43

Time Test Ended: 21:54:28

Test Type: Conventional Straddle (Initial)

Tester: Leal Cason

Unit No: 74

Interval: 4190.00 ft (KB) To 4220.00 ft (KB) (TVD)

Reference Elevations: 1692.00 ft (KB)

Total Depth: 4500.00 ft (KB) (TVD)

1682.00 ft (CF)

Hole Diameter: 7.88 inches Hole Condition: Good

KB to GR/CF: 10.00 ft

Serial #: 8358 Below (Straddle)

Press @RunDepth: psig @ 4242.00 ft (KB)

Capacity: 8000.00 psig

Start Date: 2014.10.23

End Date: 2014.10.23

Last Calib.: 2014.10.23

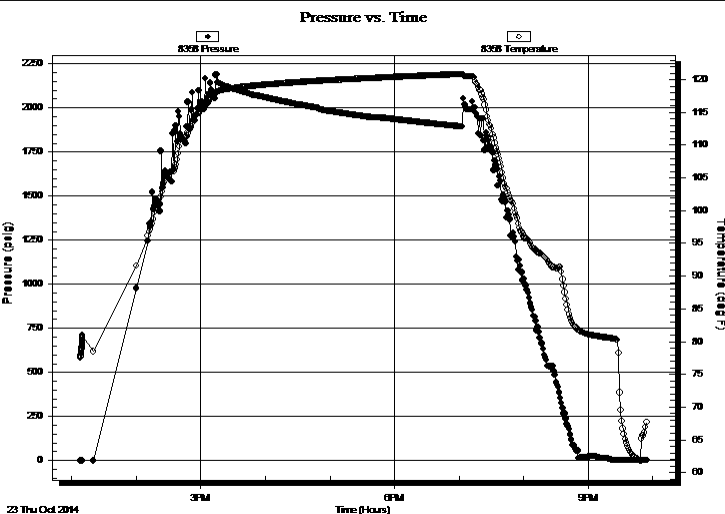
Start Time: 13:08:29

End Time: 21:54:13

Time On Btm:

Time Off Btm:

TEST COMMENT: IF: Weak Blow, Built to 2 inches
IS: No Blow Back
FF: Weak Blow, Built to 1 inch
FS: No Blow Back



PRESSURE SUMMARY

Time (Min.)	Pressure (psig)	Temp (deg F)	Annotation

Recovery

Length (ft)	Description	Volume (bbl)
65.00	MCW 10%M 90%W	0.91

Gas Rates

	Choke (inches)	Pressure (psig)	Gas Rate (Mcf/d)



**TRILOBITE
TESTING, INC.**

DRILL STEM TEST REPORT

FLUID SUMMARY

White Exploration
1635 N Waterfront Pkwy Ste 100
Wichita, KS 67206
ATTN: Andy White

1-31S-12WBarber
3 Chain Ranch A
Job Ticket: 57773 **DST#: 1**
Test Start: 2014.10.23 @ 13:08:28

Mud and Cushion Information

Mud Type: Gel Chem	Cushion Type:	Oil API:	deg API
Mud Weight: 9.00 lb/gal	Cushion Length: ft	Water Salinity:	85000 ppm
Viscosity: 71.00 sec/qt	Cushion Volume: bbl		
Water Loss: 10.79 in ³	Gas Cushion Type:		
Resistivity: ohm.m	Gas Cushion Pressure: psig		
Salinity: 6000.00 ppm			
Filter Cake: inches			

Recovery Information

Recovery Table

Length ft	Description	Volume bbl
65.00	MCW 10%M 90%W	0.912

Total Length: 65.00 ft Total Volume: 0.912 bbl
 Num Fluid Samples: 0 Num Gas Bombs: 0 Serial #:
 Laboratory Name: Laboratory Location:
 Recovery Comments: RW w as .1 @ 65 degrees

