

GEOLOGIST'S REPORT

DRILLING TIME AND SAMPLE LOG

COMPANY HESS OIL COMPANY
 LEASE HUXMAN #17
 FIELD GRABER POOL
 LOCATION 2050' FNL, 702' FWL
 SEC 29 TWP 21 S RGE 1 W
 COUNTY McPHERSON STATE KANSAS

ELEVATIONS
 KB 1480'
 DF 1477'
 GL 1475'
 Measurements Are All
 From KB

CONTRACTOR MALLARD J.V.
 SPUD 6-14-14 COMP 6-20-14
 RTD 3485 LTD none
 MUD UP 2400' TYPE MUD CHEMICAL

CASING
 SURFACE 8-5/8" at 205'
 PRODUCTION 5-1/2"
 ELECTRICAL SURVEYS
none

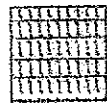
SAMPLES SAVED FROM 950' TO TD
 DRILLING TIME KEPT FROM 950' TO TD
 SAMPLES EXAMINED FROM 950' TO TD
 GEOLOGICAL SUPERVISION FROM 1000' TO TD
 GEOLOGIST ON WELL JAMES C. HESS

FORMATION TOPS	LOG	SAMPLES													
LANSING		2306 (-826)	<div style="display: flex; justify-content: space-between; align-items: center;"> 1 W </div> <table border="1" style="margin: auto; border-collapse: collapse;"> <tr><td style="width: 20px; height: 20px;"></td><td style="width: 20px; height: 20px;"></td><td style="width: 20px; height: 20px;"></td><td style="width: 20px; height: 20px;"></td></tr> <tr><td style="text-align: center;">•</td><td style="text-align: center;">29</td><td></td><td style="text-align: center;">21 S</td></tr> <tr><td style="width: 20px; height: 20px;"></td><td style="width: 20px; height: 20px;"></td><td style="width: 20px; height: 20px;"></td><td style="width: 20px; height: 20px;"></td></tr> </table>					•	29		21 S				
•	29			21 S											
KANSAS CITY		2391 (-911)													
MISSISSIPPI		2898 (-1418)													
KINDERHOOK		3193 (-1713)													
HUNTON		3253 (-1773)													
VIOLA		3355 (-1875)													
SIMPSON SAND		3393 (-1913)													
RTD		3485 (-2005)													

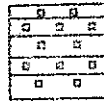
7503

REMARKS

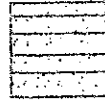
LEGEND



Anhydrite



Salt



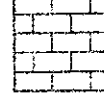
Sandstone



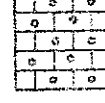
Shale



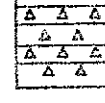
Carb sh



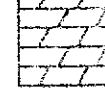
Limestone



Ool. Lime



Chert



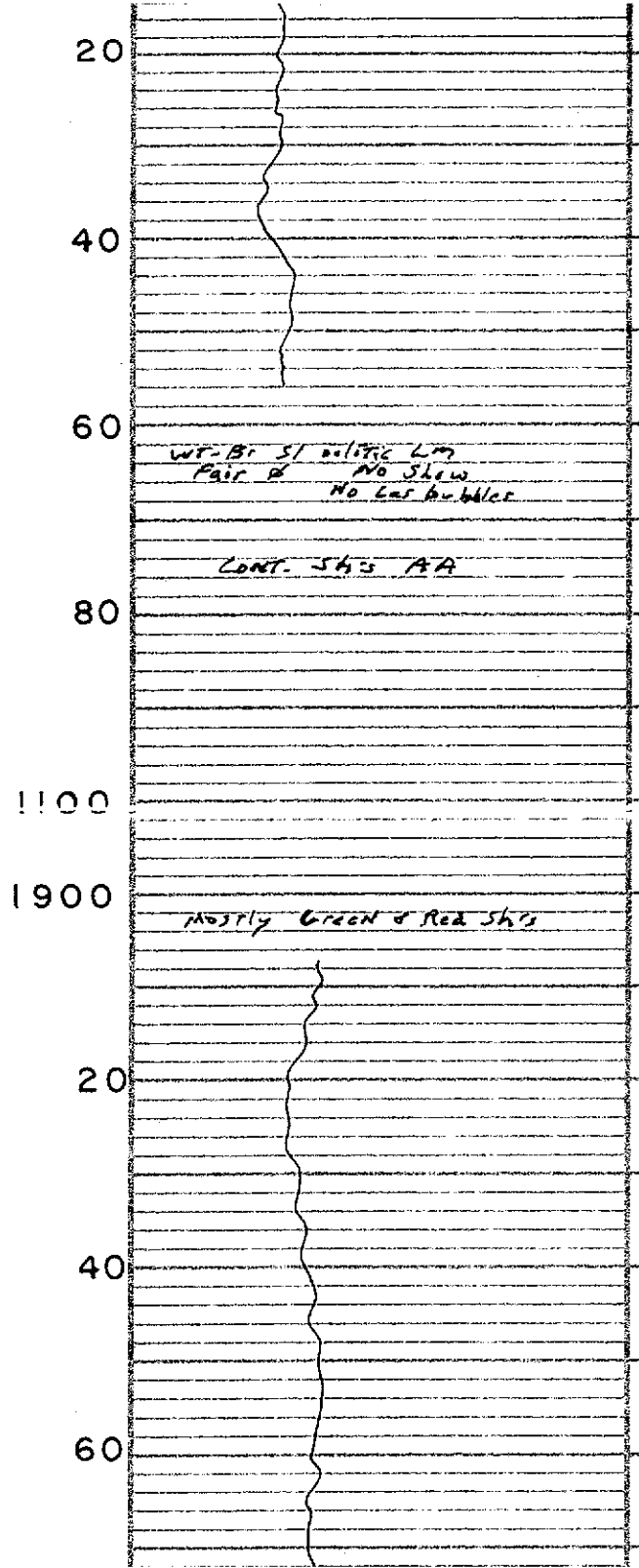
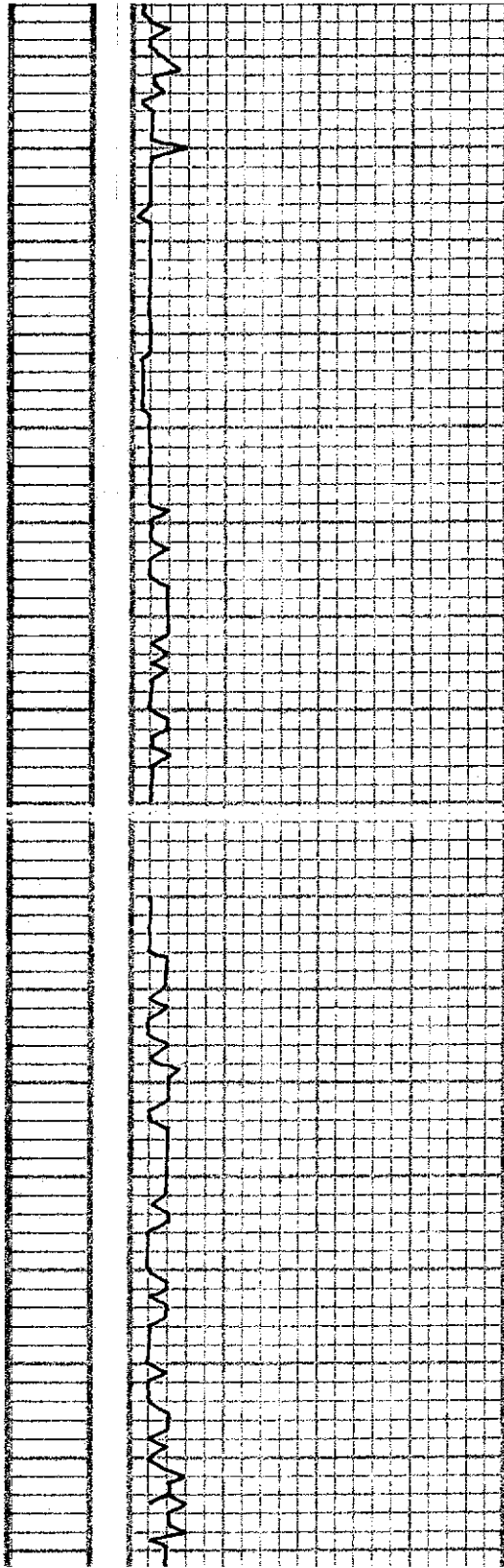
Dolomite

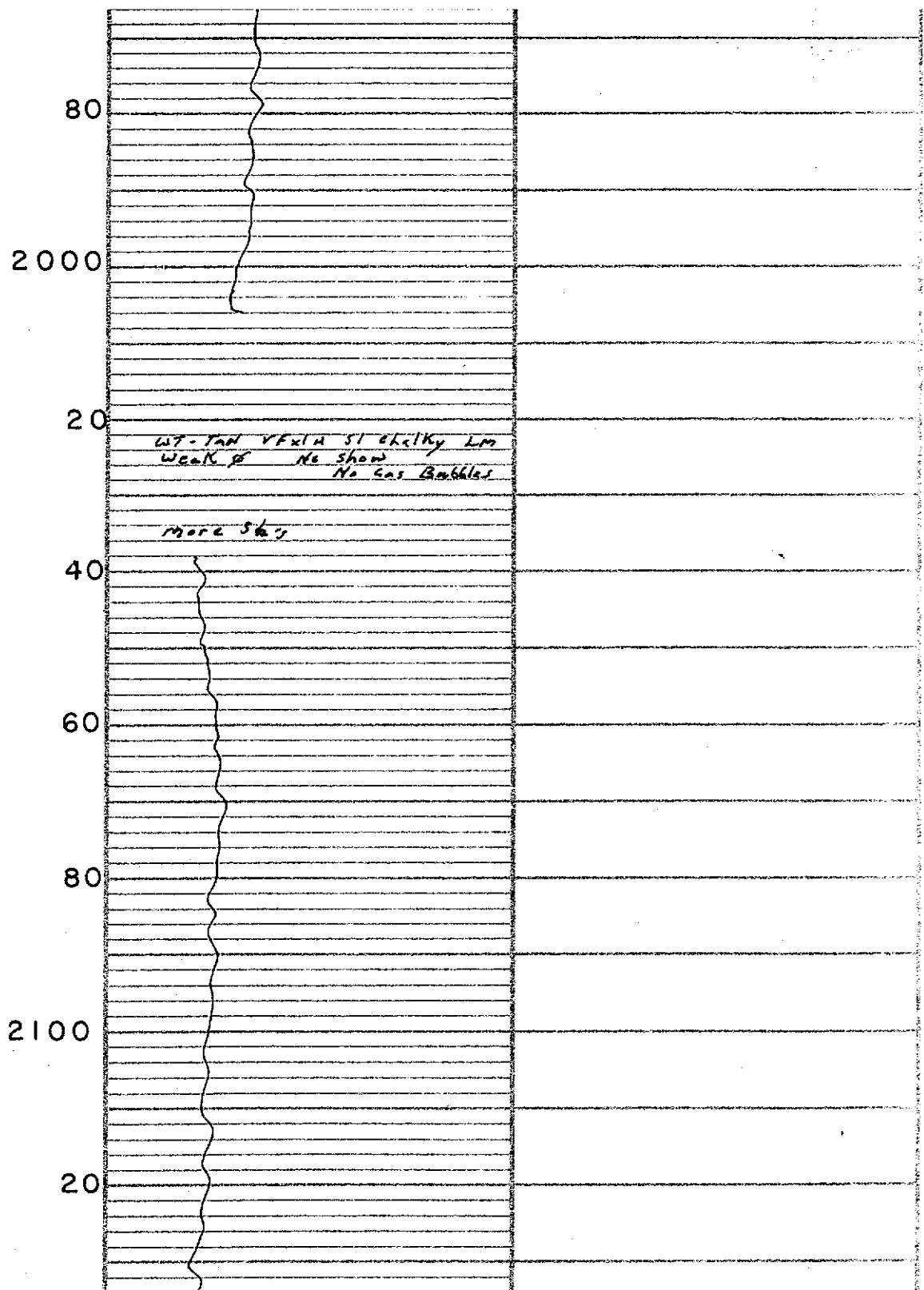
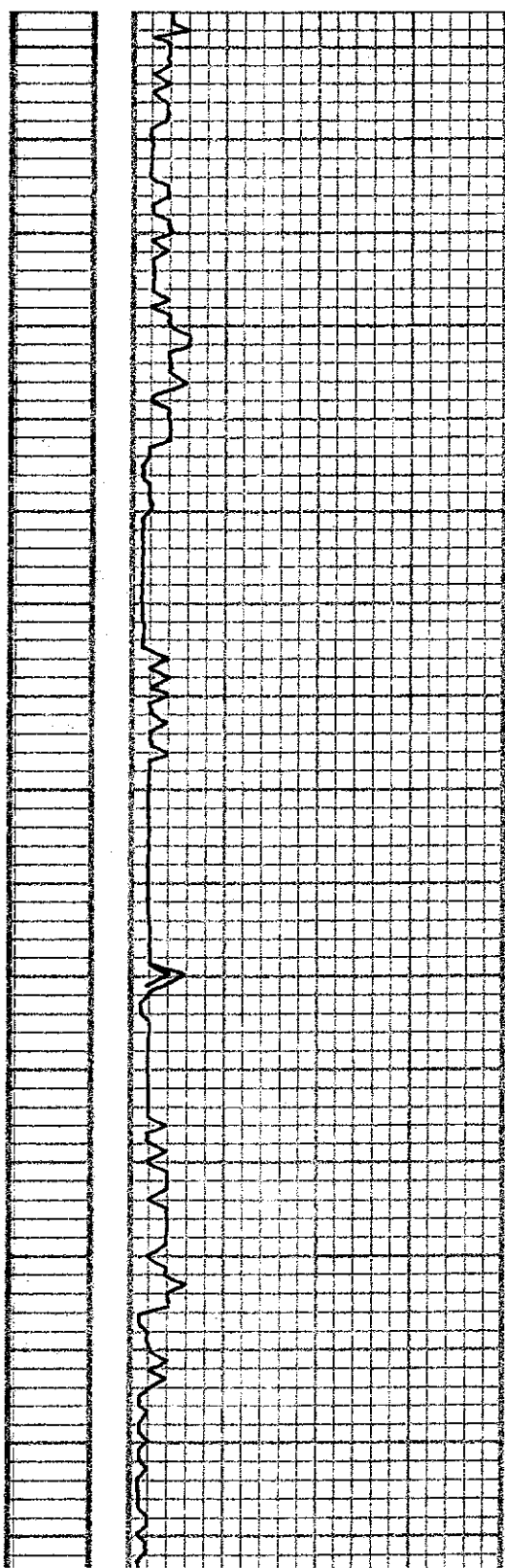
SCALE

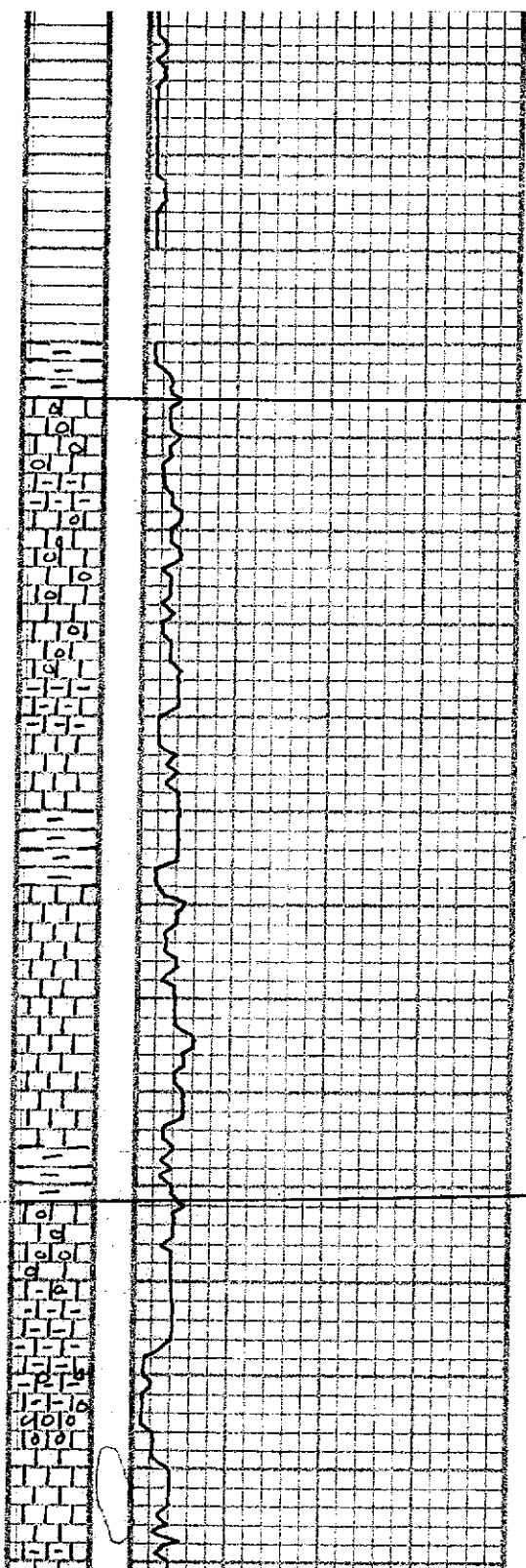
" = 100'

LOG 7703

Lithology	Drilling time in minutes					DEPTH	Sample Description	Remarks, drill stem tests, etc.
	0	5	10	15	20			
						950	Mostly Green & Red sh's	
						60		
						80		
						1000	WT 51 Chalky Lm Fail R No show 51 oolitic NO Gas Bubbles	
							More sh's	
						20		







40
2150
2300

Mostly green + Red sh's
No show
WT-Tan sl. dolitic st. calcareous
Chalky Lm
Some green + Red sh's
No show
weak B

LANSING 2306 (-826)

AA w/ less sh's
No show
weak B
Lm-Tan v. fine sl. dolitic Lm
Few green + Red sh's

AA w/ few sh's
No B
No show

More green sh's
Some wt-bcm sl. chalky Lm
AA w/ less sh's
No B
No show

Lm-Tan v. fine sl. chalky Lm
Few green sh's
AA w/ more sh's
No B
No show

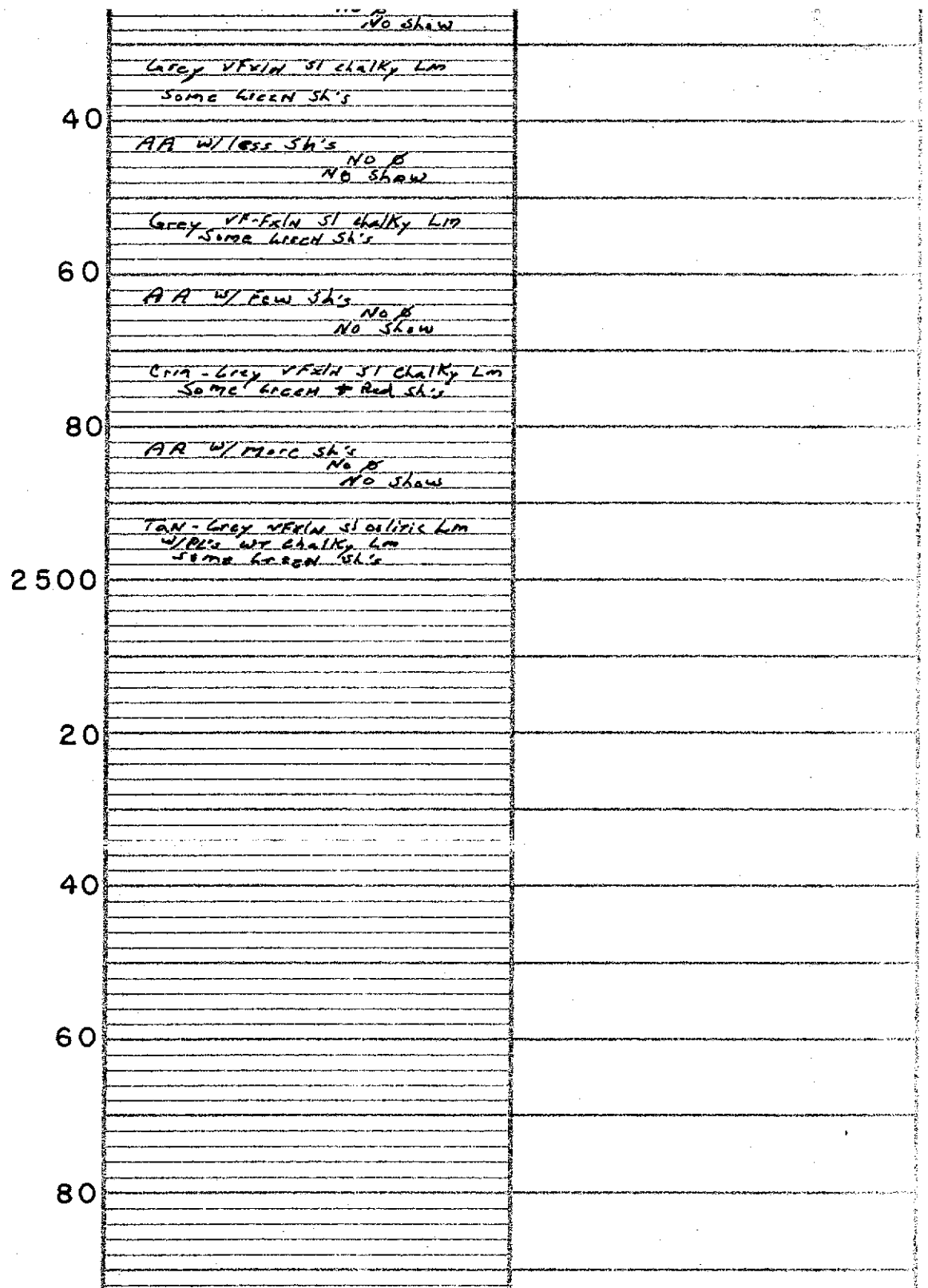
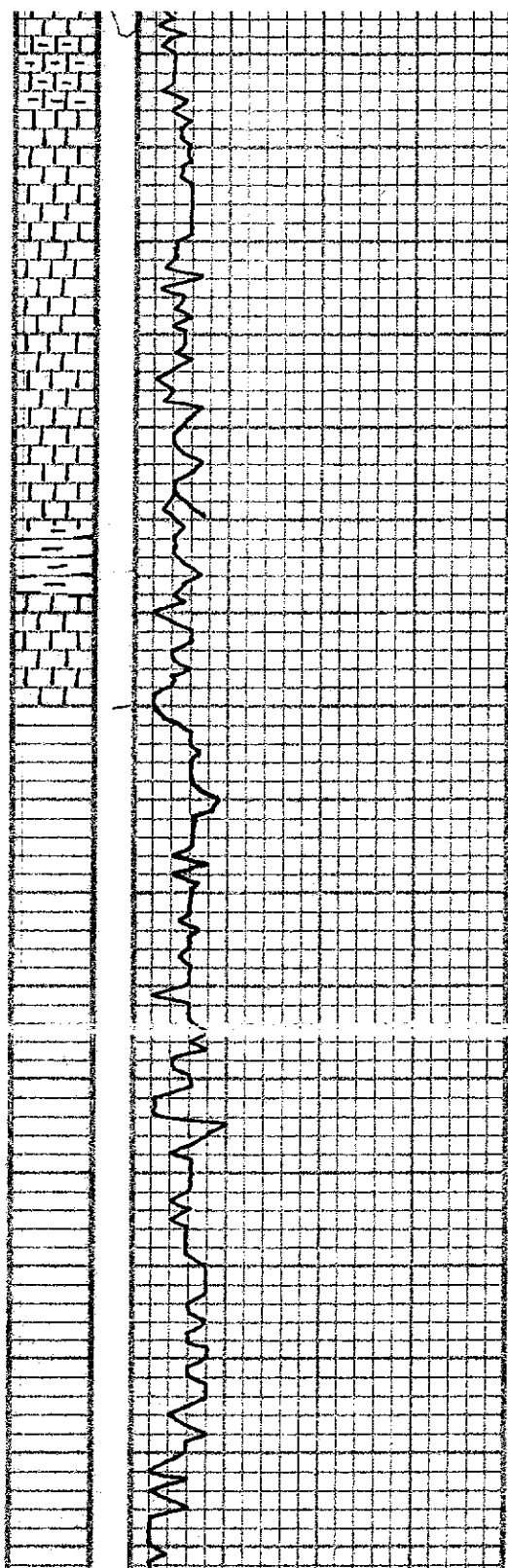
KANSAS CITY 2391

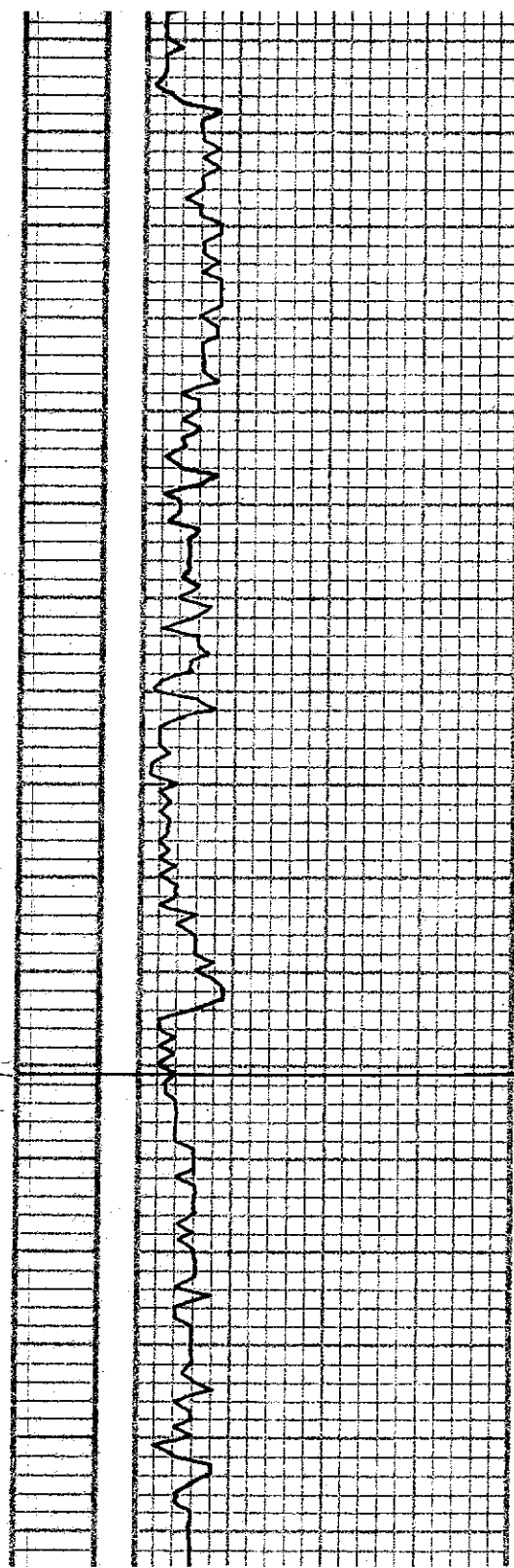
Lm-Tan v. fine sl. dolitic Lm
Pl's wt. chalky Lm
Some green sh's
AA w/ more sh's
No show
weak B

(-911)

WT-Tan sl. calcareous chalky Lm
Pl's sl. dolitic
Some green sh's
AA w/ more sh's
No B
No show

20





2600

20

40

60

80

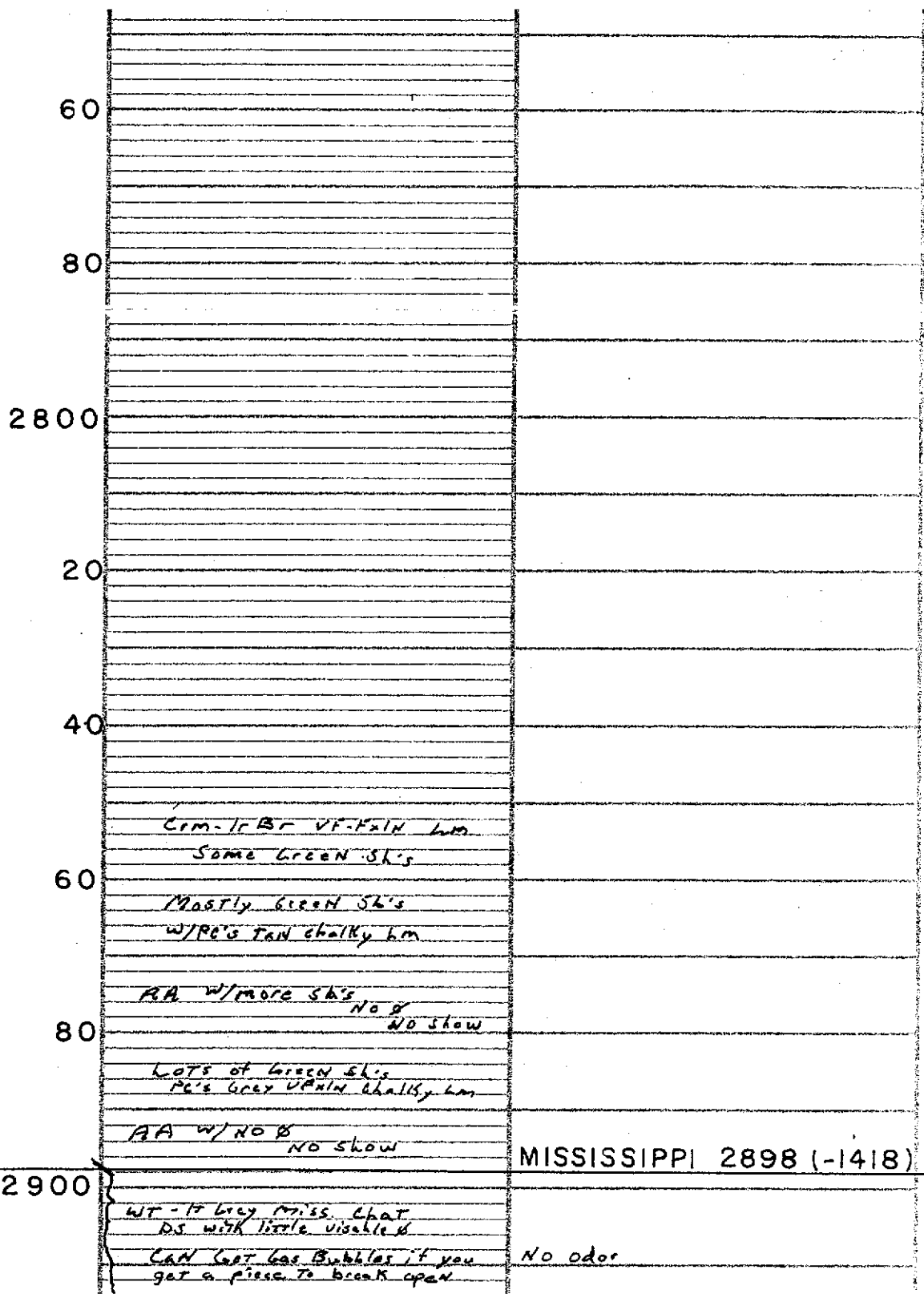
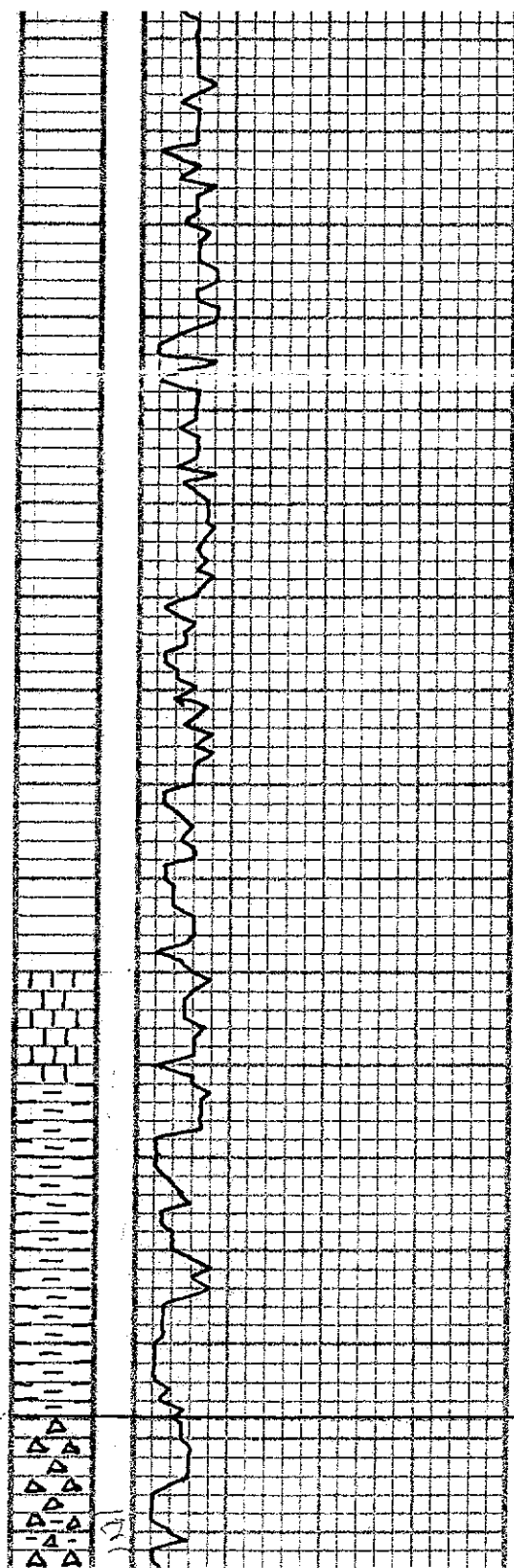
2700

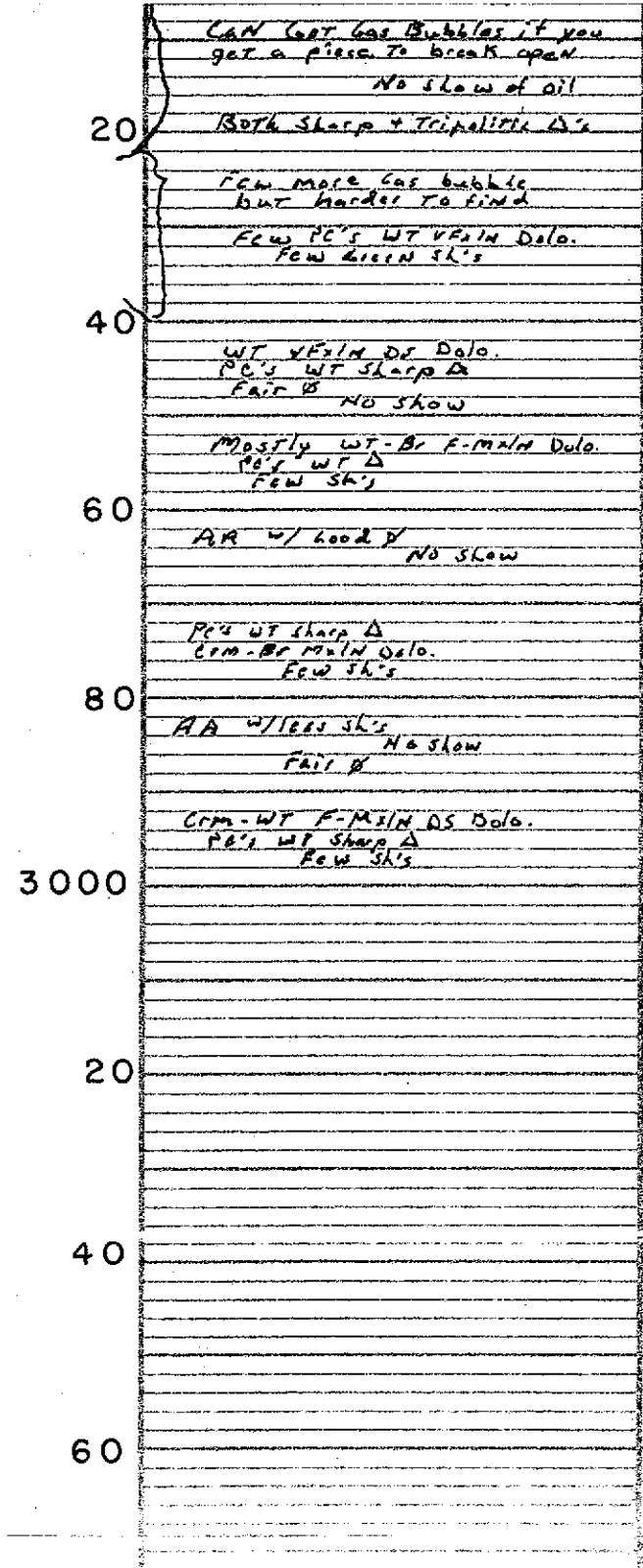
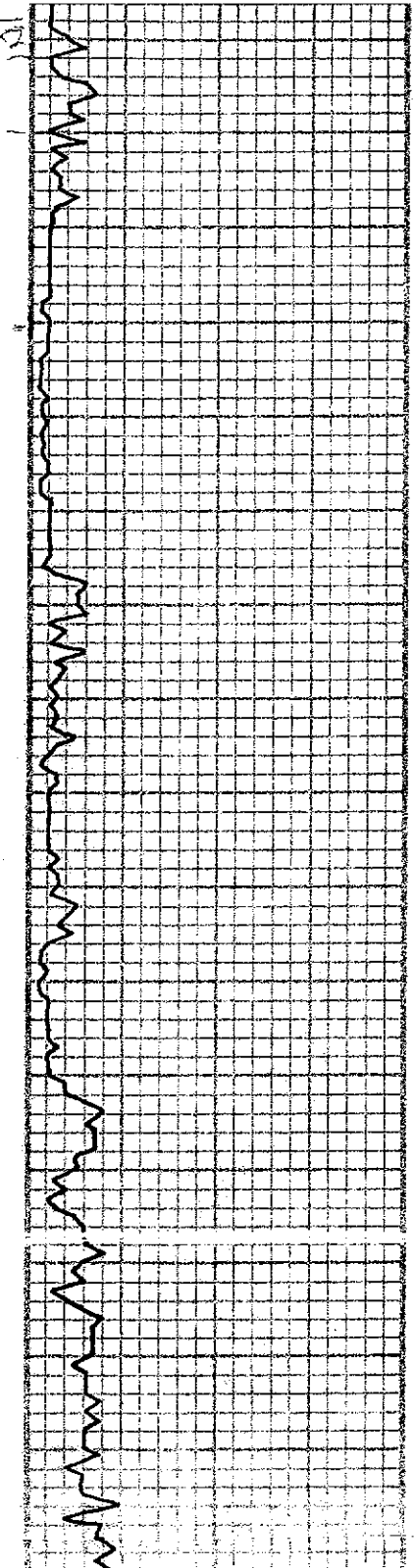
20

40

BASE KANSAS CITY 2701

(-1221)





CAN GET Gas Bubbles if you
 get a piece to break open
 No show of oil
 No odor

20 Both Sharp + Triplicate A's
 Few more Gas bubble
 but harder to find
 Few PE's WT VFAIN Dolo.
 Few Green SK's
 No odor

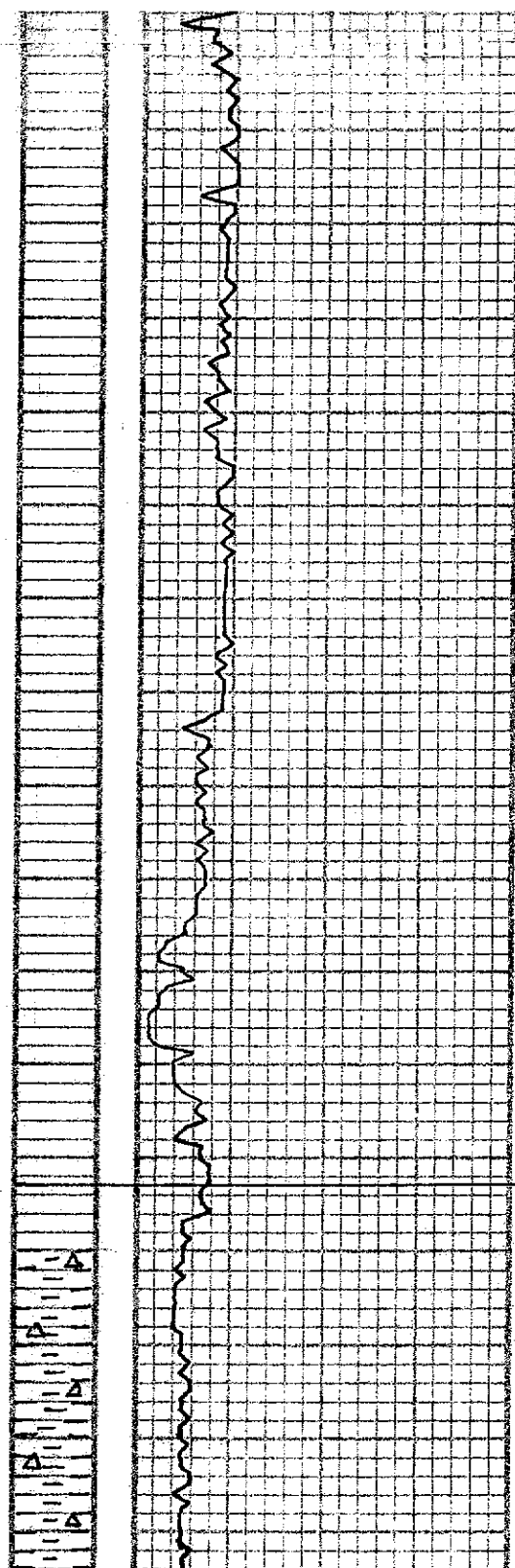
40 WT VFAIN DS Dolo.
 PE's WT Sharp A
 Fair B NO SHOW

60 Mostly WT-Br F-MAIN Dolo.
 PE's WT A
 Few SK's
 AA w/ hood V NO SHOW

80 PE's WT Sharp A
 Crm-Br MAIN Dolo.
 Few SK's
 AA w/less SK's NO SHOW
 Fair B

3000 Crm-WT F-MAIN DS Dolo.
 PE's WT Sharp A
 Few SK's

20
 40
 60



80
 3100
 20
 40
 60
 80
 3200
 20

KINDERHOOK 3193

(-1713)

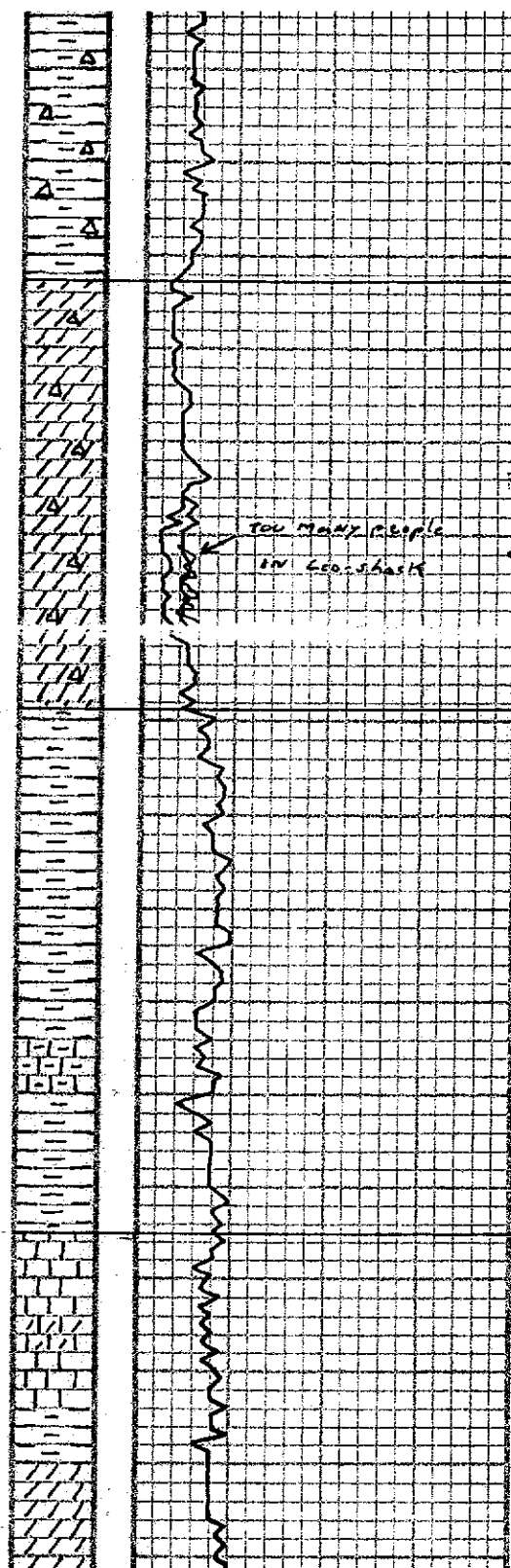
Lots of Green sh's
 Few Red sh's
 No's w/ sharp Δ

Lots of v.c. sh's
 NO B
 NO SHOW

AA NO B
 NO SHOW

Lots of v.c. sh's
 NO B
 NO SHOW

Lots of Green + Gray sh's



Lots of v. c. sh's No #
 No show

Lots of Green & Gray sh's
 Few Red sh's
 PE's WT Sharp Δ

40
 Lip 1/2
 AA w/ND #
 No show

3253
 3268 } 1 shot/ft
 Great show of Free oil in
 Tan-Br. F-Main DS Dolo.
 Good # Very strong odor
 Few PE's WT Sharp Δ

3282 } 2 shot/ft
 Good show throughout
 Hunted in Crm-Br F-Main
 Dolo.
 Fair - Good # Good odor
 PE's WT Sharp Δ

3300
 Change to mostly Green sh's
 few PE's WT Sharp Δ

20
 AA w/less Δ
 No #
 NO show

More Green sh's
 No show

40
 Mostly Green sh's
 some Br-Bl v. fine chalky lm

Back to mostly Green sh's
 NO #
 No show

AA w/mostly sh's
 NO #
 No show

60
 Crm - Gray thin DS lm
 PE's WT Sharp Δ
 Some Green sh's

AA w/more sh's
 NO #
 NO show

AA - NO show
 Some more sh's

80
 Dark Br v. fine DS Dolo.
 NO #
 No show

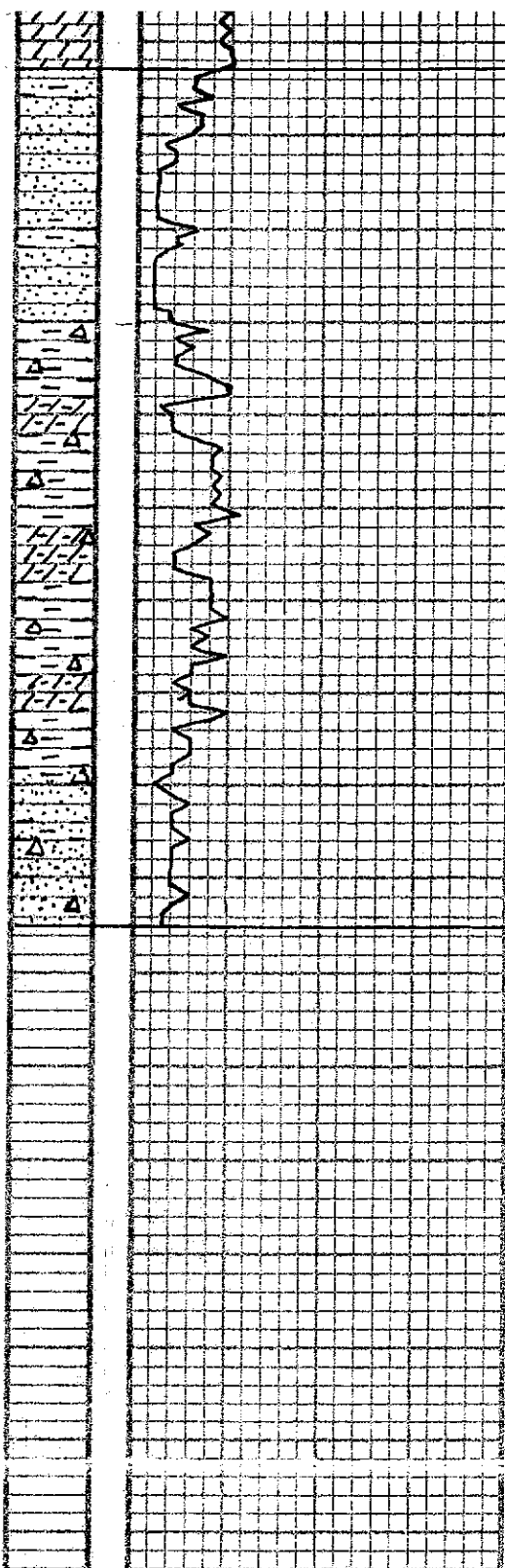
Short Trip

HUNTON 3253 (-1773)

MAQUOKETA 3299 (-1819)

VIOLA 3355 (-1875)

SIMPSON SAND 3393



3400

air
thr

20

40

60

80

3500

NO SHOW

SIMPSON SAND 3393

(-1913)

Good show of Free oil in
Clear to Tan M.G. w.s.
Sandstone Clusters
STRONG odor

Fair show AA w/Good ϕ
Good odor
some barren ϕ

Weak show in ss
More barren ϕ Light odor
LOOKS WET

LOST SHOWS CHANGED TO
MOSTLY GREEN SH'S
Few P's w/ sharp Δ

AA w/ NO ϕ NO SHOW

Green + Y.C. sh's
Few P's com sharp Δ

Mostly Green sh's
Some TAN-BI v. fine of Dolo.
P's Grey Sharp Δ

AA w/ NO ϕ NO SHOW

Clear M.G. well sorted ss
Clusters Fair ϕ NO SHOW

More ss clusters NO SHOW

RTD 3485 (-2005)