



Musgrove

Petroleum Geology
212 Main Street, Claflin KS

Geologist's Report

Company: Blue Ridge Petroleum Corporation

Lease: McChesney #1-6

Field: Wildcat

Surface Location: SE-NW-NE-NE (445' FNL & 670' FEL)

Sec: 6 Twp: 3S Rge: 24W

County: Norton State: Kansas

GL: 2418' KB: 2423'

Contractor: LD Drilling Inc, Rig #1

Spud: 10/13/14 Comp: 10/20/14

RTD: 3750' LTD: 3750'

Mud Up: +/- 2900' Mud Type: Chemical Displaced

Drilling Time Kept From: 3200' to RTD

Samples Saved From: 3200' to RTD

Samples Examined: 3200' to RTD

Geological Supervision: 3350' to RTD

Geologist on Well: Clint Musgrove and Kurt Talbott

Surface Casing: 8 5/8"@ 263'

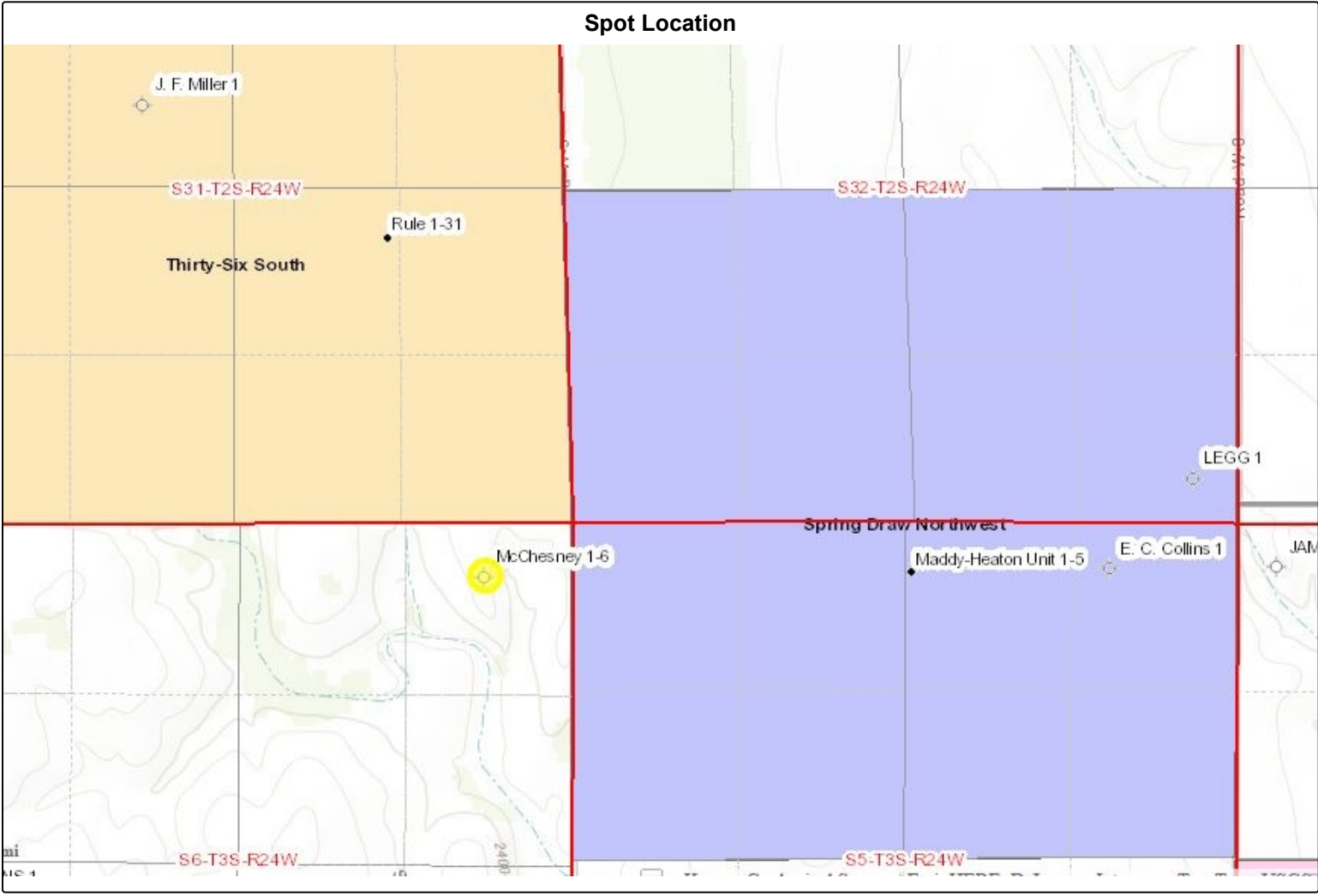
Production Casing: None

Wireline Logs: By Nabors: CNL/CDL, DIL, MEL, SON

Well Comparison

	WELL BEING DRILLED			OFFSET			OFFSET	
	BLUE RIDGE			BLUE RIDGE			BLUE RIDGE	
	McCHESNEY			RULE #1-31			MADDY HEATON #1-5	
	2423 KB			2421 KB			2474 KB	
FORMATION	LD	LD SS		LD	SS		LD	SS
ANHYDRITE	1964	459		1962	459		2018	456
BASE ANHYDRITE	1994	429		1991	430		2047	429
TOPEKA	3184	-761					3246	-772
HEEBNER	3360	-937		3356	-935		3420	-946
TORONTO	3391	-968		3386	-965		3452	-978
LANSING	3403	-980		3400	-979		3465	-991
BASE KC	3589	-1166		3589	-1168		3651	-1177
GRANITE WASH	3678	-1255		3685	-1264		3736	-1262

TOTAL DEPTH	3750	-1327	3747	-1326	3740	-1266
--------------------	-------------	--------------	-------------	--------------	-------------	--------------



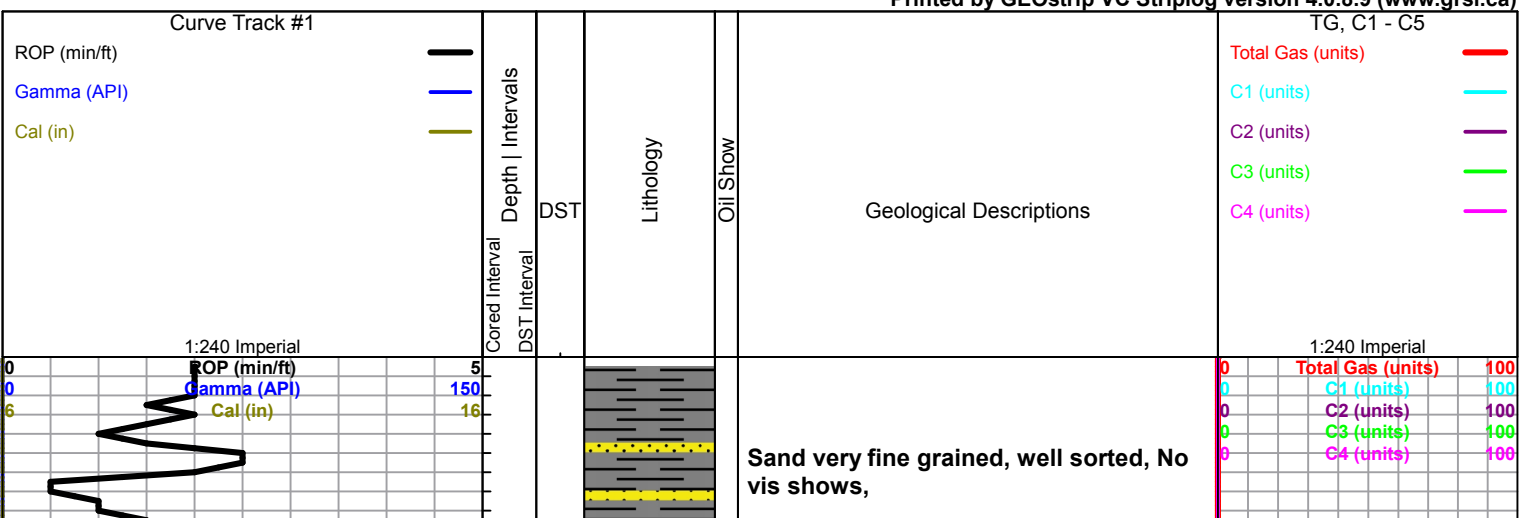
ROCK TYPES

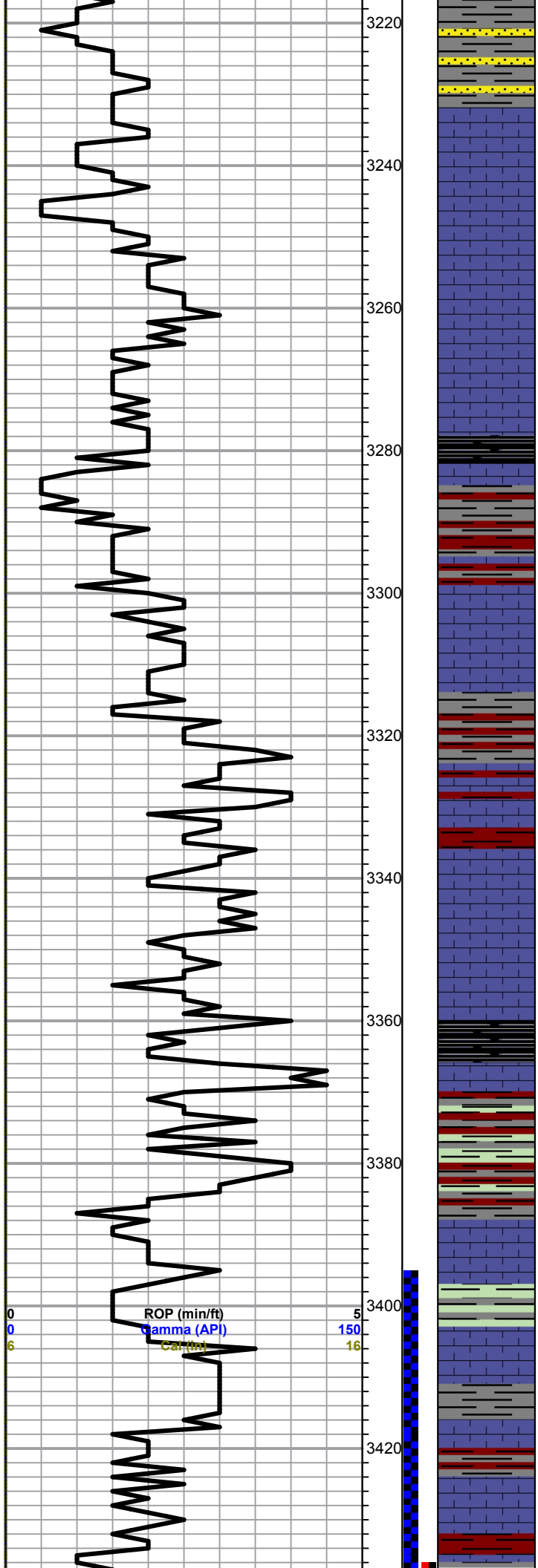
	Cht vari		shale, gm		Carbon Sh		Ss
	Lmst fw<7		shale, gry		shale, red		Igne

OTHER SYMBOLS

EVENTS	INTERVALS	DST
<ul style="list-style-type: none"> ⌋ Casing Shoe ▽ RTF ▶ Sidewall ▲ Left Casing Shoe ▼ Right Casing Shoe 	<ul style="list-style-type: none"> ■ Core • DST 	<ul style="list-style-type: none"> ■ DST Int ■ DST alt

Printed by GEOstrip VC Striplog version 4.0.8.9 (www.grsi.ca)





Trace gry Shale

Ls- crm, fxln, cherty, poor vuggy por,

A/A

Black carbon shale

Trace Gry/red shale-soft

Ls-crm/wht, fln, fossils, scattered ppt to
iner xln por, cherty in part, No vis
shows,

Ls- crm/gry, fxln, cherty poor vis por, no
vis shwos,

Trace red/gry shale- soft

Ls- crm/lt gry, fxln, poor vis por, no vis
shows,

Heebner 3360.0(-937.0)
(-937.0)

Black carbon shale

Shale varying color

Toronto 3394.0(-971.0)
(-968.0)

Ls-crm, fxln, poor vis por,
Trace red shale

Lansing 3406.0(-983.0)
(-980.0)

Ls-crm, fxln, faint black stains, SFO
when broken open no odor,

Ls-crm, fxln, cherty in part, spotty
brown stains, SFO, no odor,
Trace red shale

DST #1 3395-3445
30-30-30-45

HF: Surface Blow, Died in
20 min

Recovery:
5' Mud

Pressures:

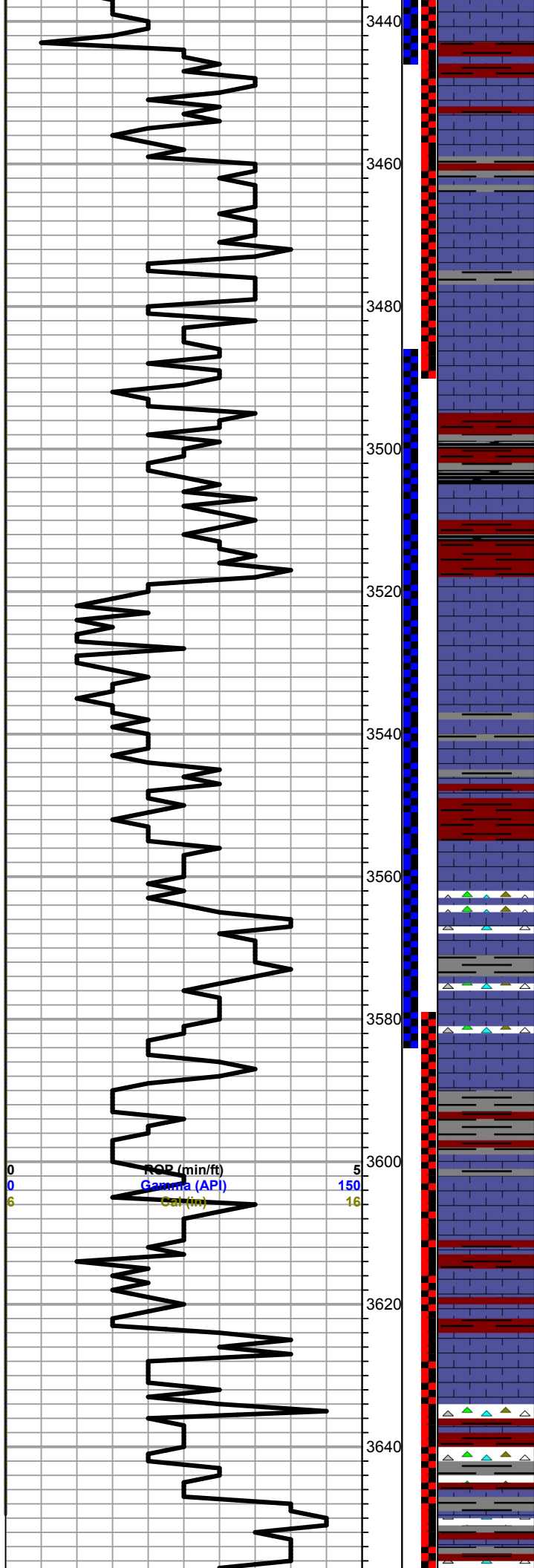
ISIP	64 psi
FSIP	46 psi
IFP	8-9 psi
FFP	9 psi
HSH	1623-1622 psi

0	Total Gas (units)	100
0	C1 (units)	100
0	C2 (units)	100
0	C3 (units)	100
0	C4 (units)	100

DST #2 3436-3490
30-30-30-30

HF: Surface blow

Recovery:
5' Mud



Ls-wht/lt gry,fxln, poor to fair ppt to finely vug por, golden to dark brown stains, SFO, very faint odor

Ls-crm/wht, fxln, few fossils, poor ppt to iner xln por, dark brown stains, Broken open TrSFO,

Ls-wht/crm, fxln, slightly ool, poor ppt to iner ool por, Trace stains, TrSFO, very faint odor

Ls-wht, fxln, slightly ool, poor ppt por, Trace dark brown stains, TrSFO

A/A

Shale-red/brown

Ls-wht/lt gry, fxln, ool, poor iner ool to finely vug por, dark to golden brown stains, SFO, no odor,

Ls-gry/tan, fxln, spotty ppt por, heavy dark brown stains, TrSFO, shale-brown/red-soft

Ls- gry, fxln, dense, cherty in part, poor vis por,

Ls-gry/tan, fxln, ool, poor vis por, cherty in part

Base KC 3591.0(-1168.0)
(-1166.0)

Shale-brwn/red-soft,
Trace ls wht/crm, fxln, ool, poor vis por
Trace sand clstures, clear, well cemented, well sorted, sub angular, no vis shows, Sluff??

Ls- wht/lt gry, chalky, glauconitic, granular in part

Shale-maroon, red/brown

Ls and Shale - A/A
Chert- varying color

Pressures:

ISIP	198 psi
FSIP	77 psi
IFP	20-21 psi
FFP	21-22 psi
HSH	1652-1648 psi

DST #3 3486-3586
30-30-30-30
IF: Surface blow

Recovery:
5' Mud

Pressures:

ISIP	36 psi
FSIP	26 psi
IFP	8-10 psi
FFP	10 psi
HSH	1687-1683 psi

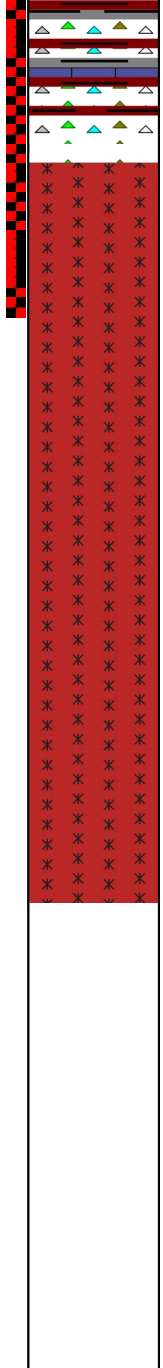
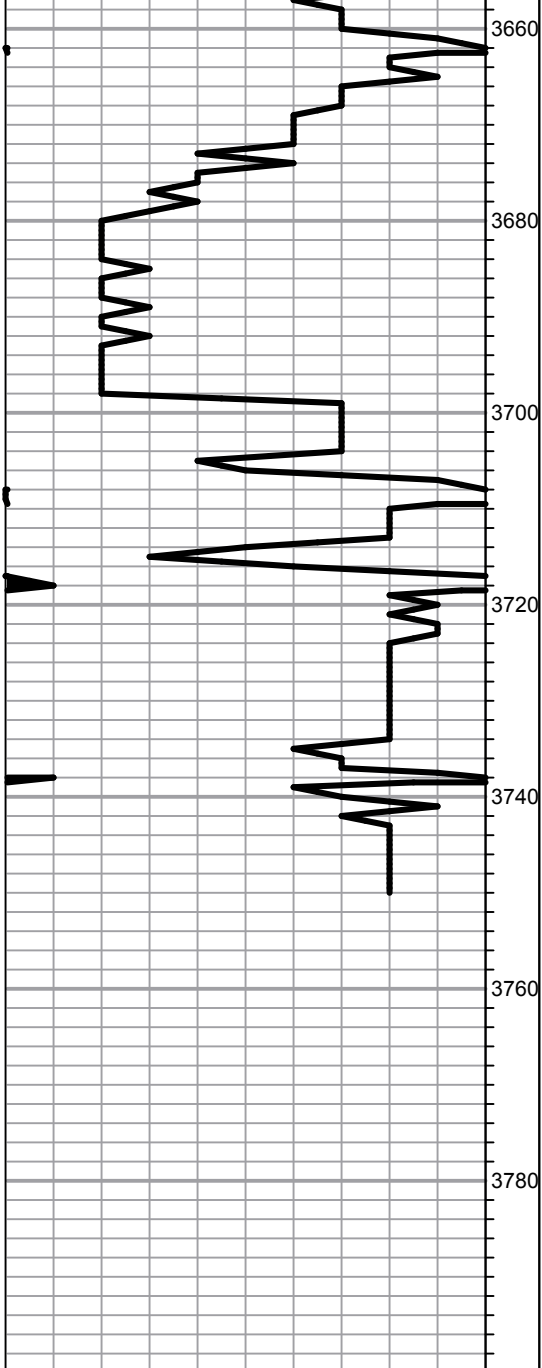
0	Total Gas (units)	100
0	C1 (units)	100
0	C2 (units)	100
0	C3 (units)	100
0	C4 (units)	100

DST #4 3580-3690
30-30-30-30
IF: Surface blow

Recovery:
15' Mud

Pressures:

ISIP	157 psi
FSIP	131 psi
IFP	10-12 psi
FFP	12-21 psi
HSH	1737-1727 psi



Shale-brwn/red/maroon

**Granite Wash 3676.0(-1253.0)
(-1255.0)**

Quartz-sub angular to sub round, pink and clear feldspars, mica, Trace sand clusters very fine grained, well cemented, poor vis por, no vis shows,

Quartz-clear, pink/orange feldspars, mica,

Shale-red/

Quartz and feldspar A/A

A/A

**Total Depth 3750.0(-1327.0)
(-1327.0)**