

Confidentiality Requested:

☐ Yes ☐ No

KANSAS CORPORATION COMMISSION  
OIL & GAS CONSERVATION DIVISION

1230401

Form ACO-1

August 2013

Form must be Typed  
Form must be Signed  
All blanks must be Filled

**WELL COMPLETION FORM**  
**WELL HISTORY - DESCRIPTION OF WELL & LEASE**

OPERATOR: License # \_\_\_\_\_

Name: \_\_\_\_\_

Address 1: \_\_\_\_\_

Address 2: \_\_\_\_\_

City: \_\_\_\_\_ State: \_\_\_\_\_ Zip: \_\_\_\_\_ + \_\_\_\_\_

Contact Person: \_\_\_\_\_

Phone: ( \_\_\_\_\_ ) \_\_\_\_\_

CONTRACTOR: License # \_\_\_\_\_

Name: \_\_\_\_\_

Wellsite Geologist: \_\_\_\_\_

Purchaser: \_\_\_\_\_

Designate Type of Completion:

- ☐ New Well ☐ Re-Entry ☐ Workover
- ☐ Oil ☐ WSW ☐ SWD ☐ SIOW
- ☐ Gas ☐ D&A ☐ ENHR ☐ SIGW
- ☐ OG ☐ GSW ☐ Temp. Abd.
- ☐ CM (Coal Bed Methane)
- ☐ Cathodic ☐ Other (Core, Expl., etc.): \_\_\_\_\_

If Workover/Re-entry: Old Well Info as follows:

Operator: \_\_\_\_\_

Well Name: \_\_\_\_\_

Original Comp. Date: \_\_\_\_\_ Original Total Depth: \_\_\_\_\_

- ☐ Deepening ☐ Re-perf. ☐ Conv. to ENHR ☐ Conv. to SWD
- ☐ Plug Back ☐ Conv. to GSW ☐ Conv. to Producer
- ☐ Commingled Permit #: \_\_\_\_\_
- ☐ Dual Completion Permit #: \_\_\_\_\_
- ☐ SWD Permit #: \_\_\_\_\_
- ☐ ENHR Permit #: \_\_\_\_\_
- ☐ GSW Permit #: \_\_\_\_\_

Spud Date or  
Recompletion Date

Date Reached TD

Completion Date or  
Recompletion Date

API No. 15 - \_\_\_\_\_

Spot Description: \_\_\_\_\_

\_\_\_\_\_ - \_\_\_\_\_ - \_\_\_\_\_ Sec. \_\_\_\_\_ Twp. \_\_\_\_\_ S. R. \_\_\_\_\_ ☐ East ☐ West

\_\_\_\_\_ Feet from ☐ North / ☐ South Line of Section

\_\_\_\_\_ Feet from ☐ East / ☐ West Line of Section

Footages Calculated from Nearest Outside Section Corner:

☐ NE ☐ NW ☐ SE ☐ SW

GPS Location: Lat: \_\_\_\_\_, Long: \_\_\_\_\_  
(e.g. xx.xxxxx) (e.g. -xxx.xxxxx)

Datum: ☐ NAD27 ☐ NAD83 ☐ WGS84

County: \_\_\_\_\_

Lease Name: \_\_\_\_\_ Well #: \_\_\_\_\_

Field Name: \_\_\_\_\_

Producing Formation: \_\_\_\_\_

Elevation: Ground: \_\_\_\_\_ Kelly Bushing: \_\_\_\_\_

Total Vertical Depth: \_\_\_\_\_ Plug Back Total Depth: \_\_\_\_\_

Amount of Surface Pipe Set and Cemented at: \_\_\_\_\_ Feet

Multiple Stage Cementing Collar Used? ☐ Yes ☐ No

If yes, show depth set: \_\_\_\_\_ Feet

If Alternate II completion, cement circulated from: \_\_\_\_\_

feet depth to: \_\_\_\_\_ w/ \_\_\_\_\_ sx cmt.

**Drilling Fluid Management Plan**

(Data must be collected from the Reserve Pit)

Chloride content: \_\_\_\_\_ ppm Fluid volume: \_\_\_\_\_ bbls

Dewatering method used: \_\_\_\_\_

Location of fluid disposal if hauled offsite: \_\_\_\_\_

Operator Name: \_\_\_\_\_

Lease Name: \_\_\_\_\_ License #: \_\_\_\_\_

Quarter \_\_\_\_\_ Sec. \_\_\_\_\_ Twp. \_\_\_\_\_ S. R. \_\_\_\_\_ ☐ East ☐ West

County: \_\_\_\_\_ Permit #: \_\_\_\_\_

**AFFIDAVIT**

I am the affiant and I hereby certify that all requirements of the statutes, rules and regulations promulgated to regulate the oil and gas industry have been fully complied with and the statements herein are complete and correct to the best of my knowledge.

Submitted Electronically

**KCC Office Use ONLY**

☐ Confidentiality Requested

Date: \_\_\_\_\_

☐ Confidential Release Date: \_\_\_\_\_

☐ Wireline Log Received

☐ Geologist Report Received

☐ UIC Distribution

ALT ☐ I ☐ II ☐ III Approved by: \_\_\_\_\_ Date: \_\_\_\_\_





GAMMA-RAY  
CCL LOG

Company GRADY BOLDING CORPORATION	
Well	MILLER A No.1 SWD
Field	
County	ELLIS
State	KANSAS
Company GRADY BOLDING CORPORATION	
Well	MILLER A No.1 SWD
Field	
County	ELLIS
State	KANSAS
Location:	SE SW SE/4 SEC 17 TWP 12S RGE 17W
API #:	15-051-21,062-00-01
Other Services	
Permanent Datum	GROUND LEVEL
Log Measured From	K.B. 5' A.G.L.
Drilling Measured From	KELLY BUSHING
Elevation	K.B. D.F. G.L.

Date	DEC 01 2014
Run Number	ONE
Depth Driller	1375
Depth Logger	1371
Bottom Logged Interval	1370
Top Log Interval	
Open Hole Size	
Type Fluid	WATER
Density / Viscosity	
Max. Recorded Temp.	
Estimated Cement Top	00
Time Well Ready	
Time Logger on Bottom	
Equipment Number	PT-05
Location	HAYS
Recorded By	BRAD LEIKER
Witnessed By	MIR. DAVE HEIN
Borehole Record	
Run Number	Bit
From	To
Size	Weight
From	To
Tubing Record	
Run Number	Weight
From	To
Size	Weight
From	To
Casing Record	Size
Surface String	8 5/8
Prod. String	00
Production String	4 1/2
	240

: Fold Here >>>

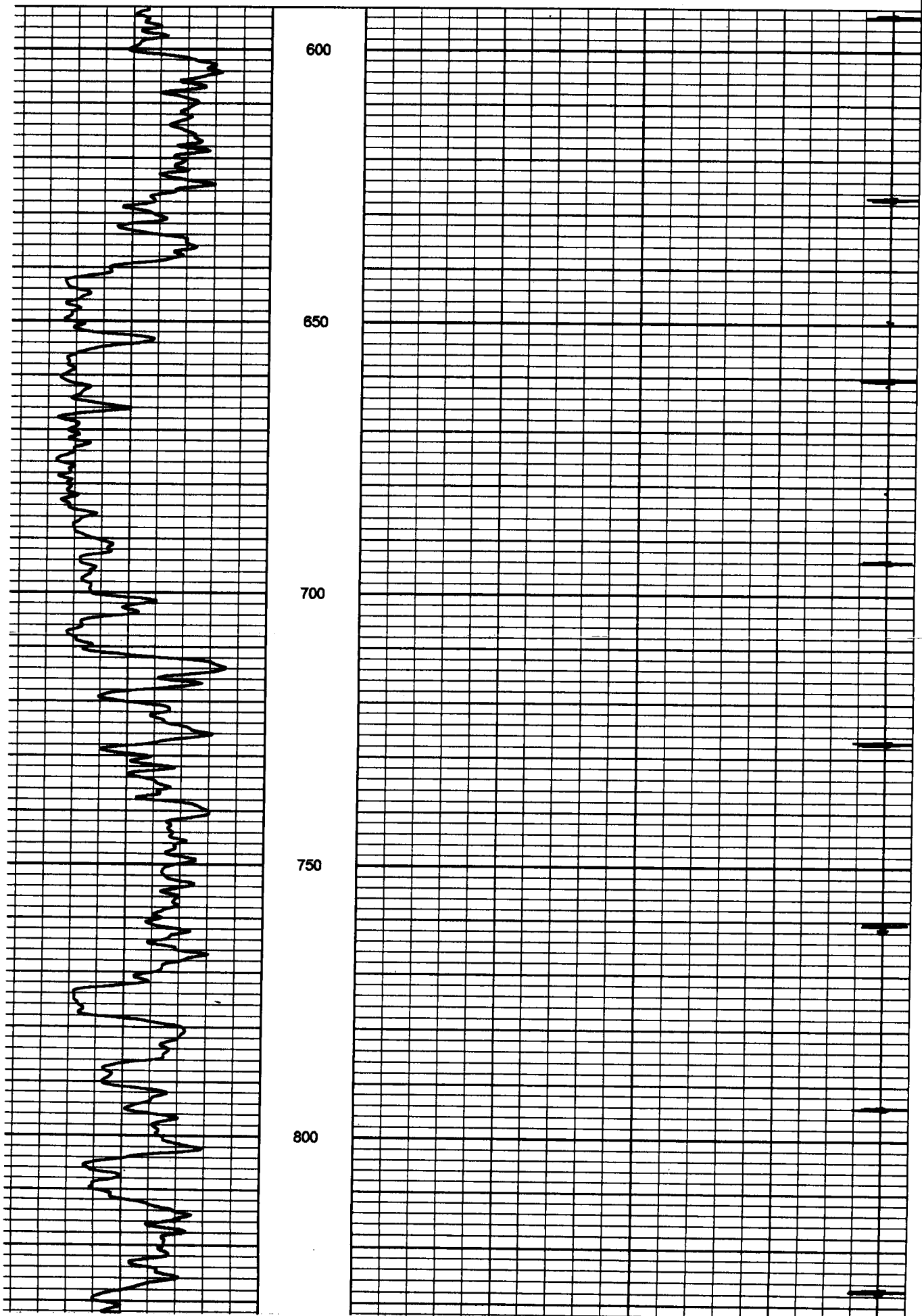
!! Interpretations are opinions based on inferences from electrical or other measurements and we cannot and do not guarantee the accuracy or correctness of any interpretation, and we shall not, except in the case of gross or willful negligence on our part, be liable or responsible for any loss, damages, or expenses incurred or sustained by anyone resulting from any interpretation made by any of our officers, agents or employees. These interpretations are also subject to our general terms and conditions set out in our current Price Schedule.

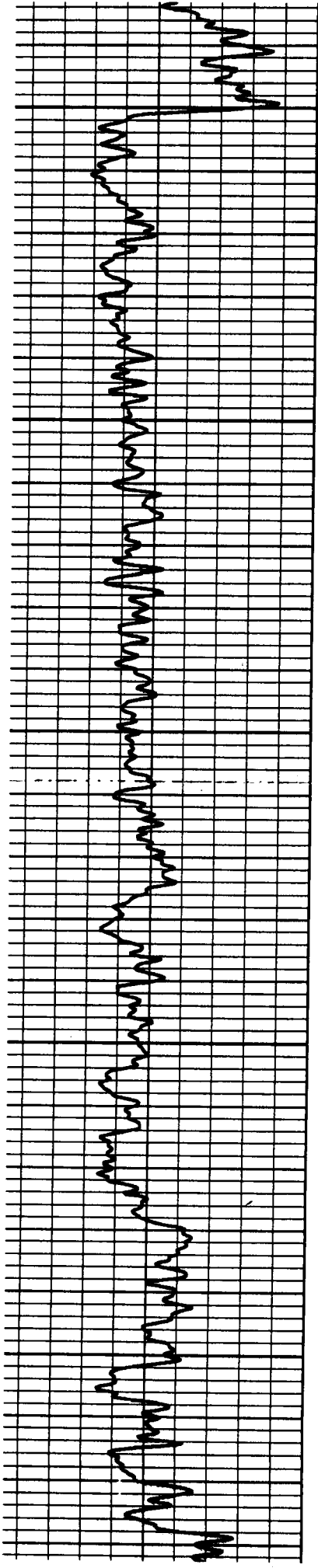
Comments



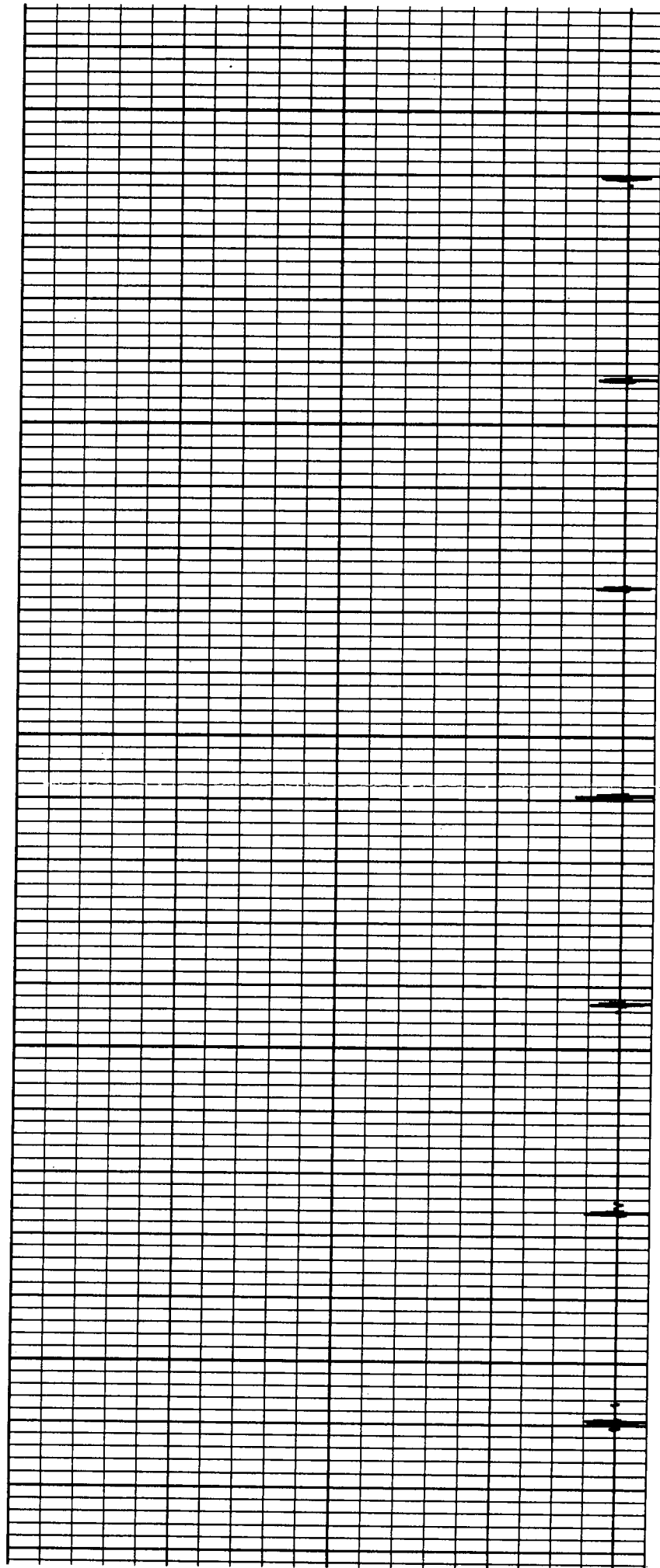
# MAIN PASS

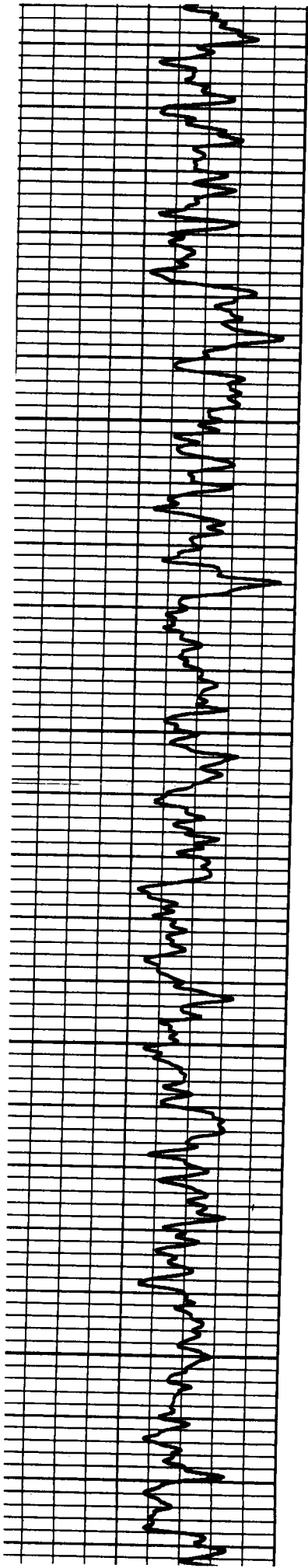
abase File:	dec011405.db
asset Pathname:	pass2
sentation Format:	gr-ccl
asset Creation:	Mon Dec 01 14:19:59 2014 by Log 7.0 B1
orted by:	Depth in Feet scaled 1:240





850  
900  
950  
1000  
1050





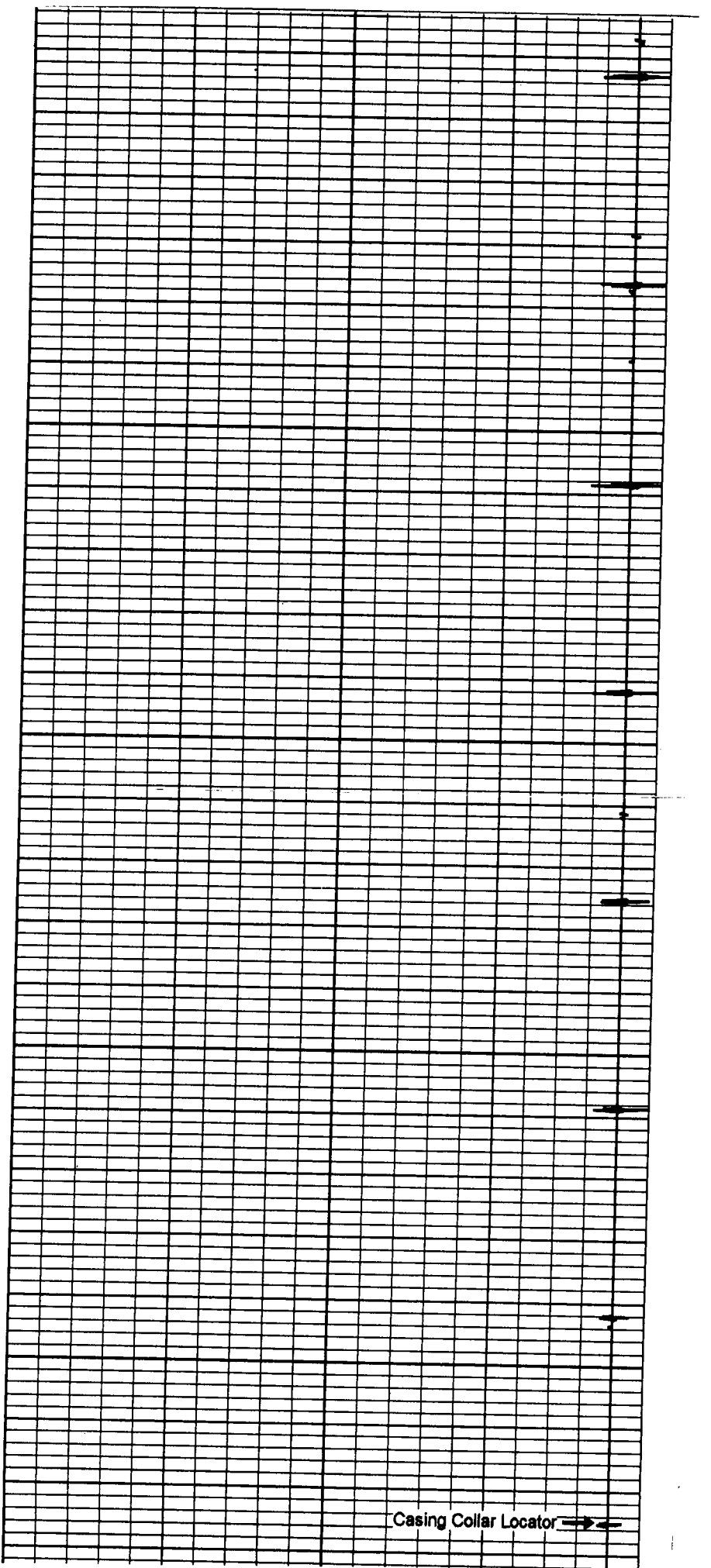
1100

1150

1200

1250

1300



Casing Collar Locator → ←

