



TEMPORARY ABANDONMENT WELL APPLICATION

OPERATOR: License# _____
 Name: _____
 Address 1: _____
 Address 2: _____
 City: _____ State: _____ Zip: _____ + _____
 Contact Person: _____
 Phone: (_____) _____
 Contact Person Email: _____
 Field Contact Person: _____
 Field Contact Person Phone: (_____) _____

API No. 15- _____
 Spot Description: _____
 _____ - _____ - _____ - _____ Sec. _____ Twp. _____ S. R. _____ E W
 _____ feet from N / S Line of Section
 _____ feet from E / W Line of Section
 GPS Location: Lat: _____, Long: _____
(e.g. xx.xxxxx) (e.g. -xxx.xxxxx)
 Datum: NAD27 NAD83 WGS84
 County: _____ Elevation: _____ GL KB
 Lease Name: _____ Well #: _____
 Well Type: (check one) Oil Gas OG WSW Other: _____
 SWD Permit #: _____ ENHR Permit #: _____
 Gas Storage Permit #: _____
 Spud Date: _____ Date Shut-In: _____

	Conductor	Surface	Production	Intermediate	Liner	Tubing
Size						
Setting Depth						
Amount of Cement						
Top of Cement						
Bottom of Cement						

Casing Fluid Level from Surface: _____ How Determined? _____ Date: _____

Casing Squeeze(s): _____ to _____ w / _____ sacks of cement, _____ to _____ w / _____ sacks of cement. Date: _____
(top) (bottom) (top) (bottom)

Do you have a valid Oil & Gas Lease? Yes No

Depth and Type: Junk in Hole at _____ Tools in Hole at _____ Casing Leaks: Yes No Depth of casing leak(s): _____
(depth) (depth)

Type Completion: ALT. I ALT. II Depth of: DV Tool: _____ w / _____ sacks of cement Port Collar: _____ w / _____ sack of cement
(depth) (depth)

Packer Type: _____ Size: _____ Inch Set at: _____ Feet

Total Depth: _____ Plug Back Depth: _____ Plug Back Method: _____

Geological Data:

Formation Name	Formation Top	Formation Base	Completion Information
1. _____	At: _____	to _____ Feet	Perforation Interval _____ to _____ Feet or Open Hole Interval _____ to _____ Feet
2. _____	At: _____	to _____ Feet	Perforation Interval _____ to _____ Feet or Open Hole Interval _____ to _____ Feet

UNDER PENALTY OF PERJURY I HEREBY ATTEST THAT THE INFORMATION CONTAINED HEREIN IS TRUE AND CORRECT TO THE BEST OF MY KNOWLEDGE

Submitted Electronically

Do NOT Write in This Space - KCC USE ONLY	Date Tested: _____	Results: _____	Date Plugged: _____	Date Repaired: _____	Date Put Back in Service: _____
	Review Completed by: _____ Comments: _____				
TA Approved: <input type="checkbox"/> Yes <input type="checkbox"/> Denied Date: _____					

Mail to the Appropriate KCC Conservation Office:

	KCC District Office #1 - 210 E. Frontview, Suite A, Dodge City, KS 67801	Phone 620.225.8888
	KCC District Office #2 / UPGS - 3450 N. Rock Road, Building 600, Suite 601, Wichita, KS 67226	Phone 316.630.4000
	KCC District Office #3 - 1500 SW Seventh Steet, Chanute, KS 66720	Phone 620.432.2300
	KCC District Office #4 - 2301 E. 13th Street, Hays, KS 67601-2651	Phone 785.625.0550

General

Well ID Garlow 2-16 FL 1
 Well Garlow 2-16 FL 1
 Company Sandridge
 Operator TJ Matzke
 Lease Name Garlow 2-16 FL 1
 Elevation 0.00 ft
 Production Method Electrical Submersible Pump

Comment

Tubulars

Tubing OD 2.875 in
 Average Joint Length 32.000 ft
 Sliding Sleeve - * - ft
 Casing OD 7.000 in
 Liner OD - * - in
 Top of Liner - * - ft
 PBTD - * - ft
 Kelly Bushing 0.00 ft

Pump Assembly

Installation Date - * -
 Pump Intake Depth 4676.00 ft
 PIP Gage - * - ft

Gas Separator

Gas Separator Not Used
 Tubing Discharge Temp - * - deg F

Pump Configuration

	Top Pump	Pump 2	Pump 3	Pump 4	Pump 5
Pump Manufacturer	- * -	- * -	- * -	- * -	- * -
Pump Description/Series	- * -	- * -	- * -	- * -	- * -
Serial Number	- * -	- * -	- * -	- * -	- * -
Stage Count	0	0	0	0	0
Pump Housing	- * -	- * -	- * -	- * -	- * -

Total Length of Pump Assembly - * - ft
 Shroud is Not Used

Electric Equipment

Control Panel - * -
 Variable Frequency is Not Used
 Overload Set Point - * -
 Underload Set Point - * -
 Overvoltage Set Point - * -
 Undervoltage Set Point - * -
 Frequency - * -
 Pump Up Time - * -

Cable Data

Round Cable Type - * -
 Round Cable Length - * - ft
 Flat Cable Type - * -
 Flat Cable Length - * - ft

Electrical Cost

Cost Per kW-Hour - * -
 Cost Per kW - * -

Motor Assembly Description

	Top Motor	Motor 2	Motor 3	Motor 4
Manufacturer	- * -	- * -	- * -	- * -
Series	- * -	- * -	- * -	- * -
Type	- * -	- * -	- * -	- * -
HP	- * -	- * -	- * -	- * -
Volts/Amps	- * -	- * -	- * -	- * -
Total Length of Motor Assembly	- * - ft		Installation Date	- * -

Electrical Parameters

AMPS		VOLTS	
A Input	- * -	BA Input	- * -
B Input	- * -	CB Input	- * -
C Input	- * -	AC Input	- * -
		A-gnd	- * -
		B-gnd	- * -
		C-gnd	- * -
Kilowatt	- * -	Power Factor	- * -
		Date and Time of Measurement	- * -

Conditions

Pressure

Static BHP - * - psi (g)
 Static BHP Method - * -
 Static BHP Date - * -
 Producing BHP 266.6 psi (g)
 Producing BHP Method Acoustic
 Producing BHP Date 11/06/2014
 Formation Depth 4676.00 ft

Production

Oil Production - * - BBL/D
 Water Production - * - BBL/D
 Gas Production - * - Mscf/D
 Production Date - * -

Temperatures

Surface Temperature 70 deg F
 Bottomhole Temperature 150 deg F

Surface Producing Pressures

Tubing Pressure - * - psi (g)
 Casing Pressure 4.7 psi (g)

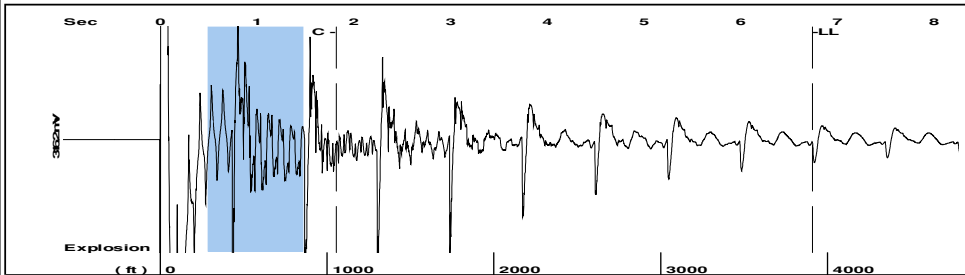
Fluid Properties

Oil API 40 deg API
 Water Specific Gravity 1.05 Sp.Gr.H2O

Casing Pressure Buildup

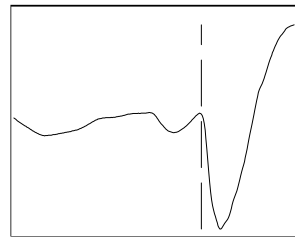
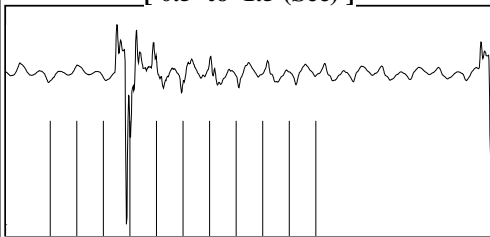
Change in Pressure -0.0 psi
 Over Change in Time 1.00 min

Group: MyWells Well: Garlow 2-16 FL 1 (acquired on: 11/06/14 10:05:09)



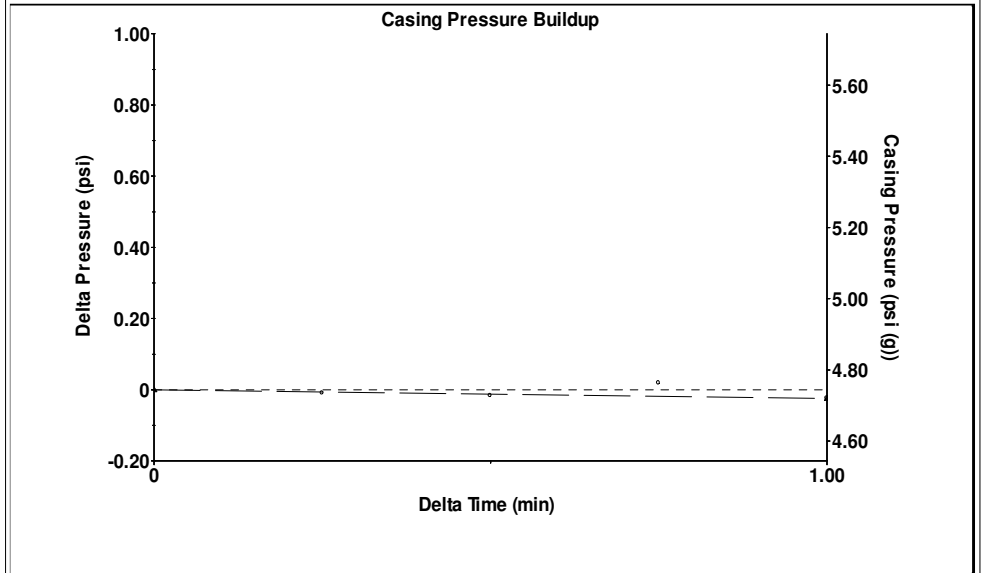
Filter Type High Pass Automatic Collar Count Yes Time 6.744 sec
 Manual Acoustic Veloc 1172.16 ft/s Manual JTS/sec 18.315 Joints 122.174 Jts
 Depth 3909.57 ft

[0.5 to 1.5 (Sec)]



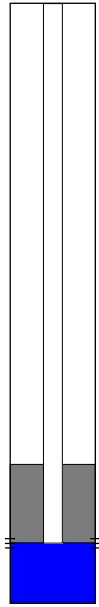
Analysis Method: Automatic

Group: MyWells Well: Garlow 2-16 FL 1 (acquired on: 11/06/14 10:05:09)

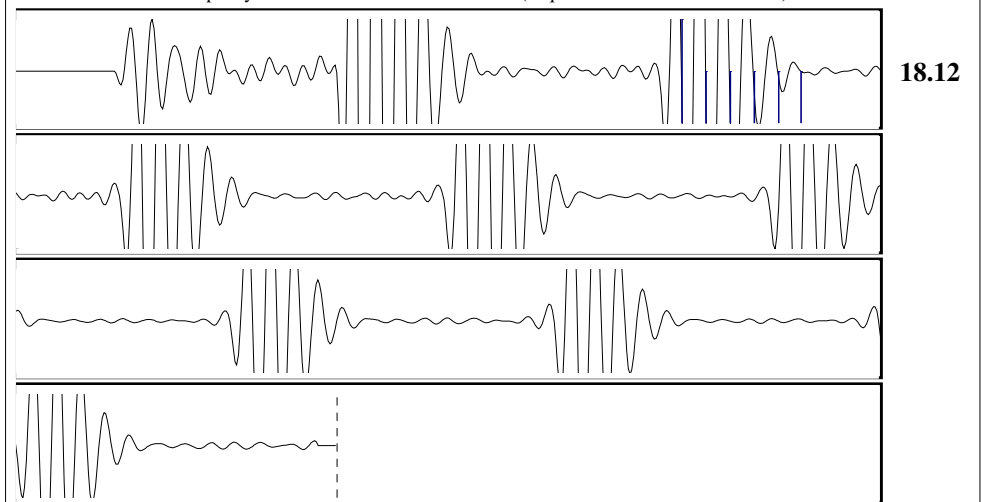


Change in Pressure -0.02 psi PT15216
 Change in Time 1.00 min Range 0 - ? psi

Group: MyWells Well: Garlow 2-16 FL 1 (acquired on: 11/06/14 10:05:09)

Production	Potential	Casing Pressure		Producing	
Oil - *-	- *- BBL/D	4.7 psi (g)		Annular Gas Flow	0 Mscf/D
Water - *-	- *- BBL/D	Casing Pressure Buildup -0.0 psi		% Liquid	100 %
Gas - *-	- *- Mscf/D	1.00 min			
IPR Method	Vogel	Gas/Liquid Interface Pressure			
PBHP/SBHP - *-	- *-	7.0 psi (g)			
Production Efficiency	0.0				
Oil 40 deg.API		Liquid Level Depth			
Water 1.05 Sp.Gr.H2O		3909.57 ft			
Gas 0.83 Sp.Gr.AIR		Pump Intake Depth			
		4676.00 ft			
Acoustic Velocity 1159.42 ft/s		Formation Depth			
		4676.00 ft			
Formation Submergence			Pump Intake	266.6 psi (g)	
Total Gaseous Liquid Column HT (TVD)		766 ft	Producing BHP	266.6 psi (g)	
Equivalent Gas Free Liquid HT (TVD)		766 ft	Static BHP	- *- psi (g)	
Acoustic Test					

Group: MyWells Well: Garlow 2-16 FL 1 (acquired on: 11/06/14 10:05:09)



Acoustic Velocity 1159.42 ft/s Joints counted 5
 Joints Per Second 18.1159 jts/sec Joints to liquid level 122.174
 Depth to liquid level 3909.57 ft Filter Width 16.315 20.315
 Automatic Collar Count Yes Time to 1st Collar 1.544 1.82

December 08, 2014

Tiffany Golay
SandRidge Exploration and Production LLC
123 ROBERT S. KERR AVE
OKLAHOMA CITY, OK 73102-6406

Re: Temporary Abandonment
API 15-077-21904-01-00
Garlow 3406 2-16H
NW/4 Sec.16-34S-06W
Harper County, Kansas

Dear Tiffany Golay:

"Your temporary abandonment (TA) application for the well listed above has been approved. In accordance with K.A.R. 82-3-111 the TA status of this well will expire 12/08/2015.

- * If you return this well to service or plug it, please notify the District Office.
- * If you sell this well you are required to file a Transfer of Operator form, T-1.
- * If the well will remain temporarily abandoned, you must submit a new TA application, CP-111, before 12/08/2015.

You may contact me at the number above if you have questions.

Very truly yours,

Steve VanGieson"