



TEMPORARY ABANDONMENT WELL APPLICATION

All blanks must be complete

OPERATOR: License# _____
 Name: _____
 Address 1: _____
 Address 2: _____
 City: _____ State: _____ Zip: _____ + _____
 Contact Person: _____
 Phone: (_____) _____
 Contact Person Email: _____
 Field Contact Person: _____
 Field Contact Person Phone: (_____) _____

API No. 15- _____
 Spot Description: _____
 _____ - _____ - _____ - _____ Sec. _____ Twp. _____ S. R. _____ E W
 _____ feet from N / S Line of Section
 _____ feet from E / W Line of Section
 GPS Location: Lat: _____, Long: _____
(e.g. xx.xxxxx) (e.g. -xxx.xxxxx)
 Datum: NAD27 NAD83 WGS84
 County: _____ Elevation: _____ GL KB
 Lease Name: _____ Well #: _____
 Well Type: (check one) Oil Gas OG WSW Other: _____
 SWD Permit #: _____ ENHR Permit #: _____
 Gas Storage Permit #: _____
 Spud Date: _____ Date Shut-In: _____

	Conductor	Surface	Production	Intermediate	Liner	Tubing
Size						
Setting Depth						
Amount of Cement						
Top of Cement						
Bottom of Cement						

Casing Fluid Level from Surface: _____ How Determined? _____ Date: _____
 Casing Squeeze(s): _____ to _____ w / _____ sacks of cement, _____ to _____ w / _____ sacks of cement. Date: _____
(top) (bottom) (top) (bottom)
 Do you have a valid Oil & Gas Lease? Yes No
 Depth and Type: Junk in Hole at _____ Tools in Hole at _____ Casing Leaks: Yes No Depth of casing leak(s): _____
(depth) (depth)
 Type Completion: ALT. I ALT. II Depth of: DV Tool: _____ w / _____ sacks of cement Port Collar: _____ w / _____ sack of cement
(depth) (depth)
 Packer Type: _____ Size: _____ Inch Set at: _____ Feet
 Total Depth: _____ Plug Back Depth: _____ Plug Back Method: _____

Geological Data:

Formation Name	Formation Top	Formation Base	Completion Information
1. _____	At: _____	to _____ Feet	Perforation Interval _____ to _____ Feet or Open Hole Interval _____ to _____ Feet
2. _____	At: _____	to _____ Feet	Perforation Interval _____ to _____ Feet or Open Hole Interval _____ to _____ Feet

UNDER PENALTY OF PERJURY I HEREBY ATTEST THAT THE INFORMATION CONTAINED HEREIN IS TRUE AND CORRECT TO THE BEST OF MY KNOWLEDGE

Submitted Electronically

Do NOT Write in This Space - KCC USE ONLY	Date Tested: _____	Results: _____	Date Plugged: _____	Date Repaired: _____	Date Put Back in Service: _____
	Review Completed by: _____ Comments: _____				
TA Approved: <input type="checkbox"/> Yes <input type="checkbox"/> Denied Date: _____					

Mail to the Appropriate KCC Conservation Office:

	KCC District Office #1 - 210 E. Frontview, Suite A, Dodge City, KS 67801	Phone 620.225.8888
	KCC District Office #2 / UPGS - 3450 N. Rock Road, Building 600, Suite 601, Wichita, KS 67226	Phone 316.630.4000
	KCC District Office #3 - 1500 SW Seventh Steet, Chanute, KS 66720	Phone 620.432.2300
	KCC District Office #4 - 2301 E. 13th Street, Hays, KS 67601-2651	Phone 785.625.0550

General

Well ID South Point Farms 1-17 FL 1
 Well South Point Farms 1-17 FL 1
 Company Sandridge
 Operator TJ Matzke
 Lease Name South Point Farms 1-17 FL 1
 Elevation 0.00 ft
 Production Method Electrical Submersible Pump

Comment

Tubulars

Tubing OD 2.875 in
 Average Joint Length 32.310 ft
 Sliding Sleeve - * - ft
 Casing OD 7.000 in
 Liner OD - * - in
 Top of Liner - * - ft
 PBTD - * - ft
 Kelly Bushing 0.00 ft

Pump Assembly

Installation Date - * -
 Pump Intake Depth 5395.00 ft
 PIP Gage - * - ft

Gas Separator

Gas Separator Not Used
 Tubing Discharge Temp - * - deg F

Pump Configuration

	Top Pump	Pump 2	Pump 3	Pump 4	Pump 5
Pump Manufacturer	- * -	- * -	- * -	- * -	- * -
Pump Description/Series	- * -	- * -	- * -	- * -	- * -
Serial Number	- * -	- * -	- * -	- * -	- * -
Stage Count	0	0	0	0	0
Pump Housing	- * -	- * -	- * -	- * -	- * -

Total Length of Pump Assembly - * - ft
 Shroud is Not Used

Electric Equipment

Control Panel - * -
 Variable Frequency is Not Used
 Overload Set Point - * -
 Underload Set Point - * -
 Overvoltage Set Point - * -
 Undervoltage Set Point - * -
 Frequency - * -
 Pump Up Time - * -

Cable Data

Round Cable Type - * -
 Round Cable Length - * - ft
 Flat Cable Type - * -
 Flat Cable Length - * - ft

Electrical Cost

Cost Per kW-Hour - * -
 Cost Per kW - * -

Motor Assembly Description

	Top Motor	Motor 2	Motor 3	Motor 4
Manufacturer	- * -	- * -	- * -	- * -
Series	- * -	- * -	- * -	- * -
Type	- * -	- * -	- * -	- * -
HP	- * -	- * -	- * -	- * -
Volts/Amps	- * -	- * -	- * -	- * -
Total Length of Motor Assembly	- * - ft		Installation Date	- * -

Electrical Parameters

AMPS		VOLTS	
A Input	- * -	BA Input	- * -
B Input	- * -	CB Input	- * -
C Input	- * -	AC Input	- * -
Kilowatt	- * -	Power Factor	- * -
		Date and Time of Measurement	- * -

Conditions

Pressure

Static BHP - * - psi (g)
 Static BHP Method - * -
 Static BHP Date - * -
 Producing BHP 814.0 psi (g)
 Producing BHP Method Acoustic
 Producing BHP Date 11/07/2014
 Formation Depth 5395.00 ft

Production

Oil Production - * - BBL/D
 Water Production - * - BBL/D
 Gas Production - * - Mscf/D
 Production Date - * -

Temperatures

Surface Temperature 70 deg F
 Bottomhole Temperature 150 deg F

Surface Producing Pressures

Tubing Pressure - * - psi (g)
 Casing Pressure 584.2 psi (g)

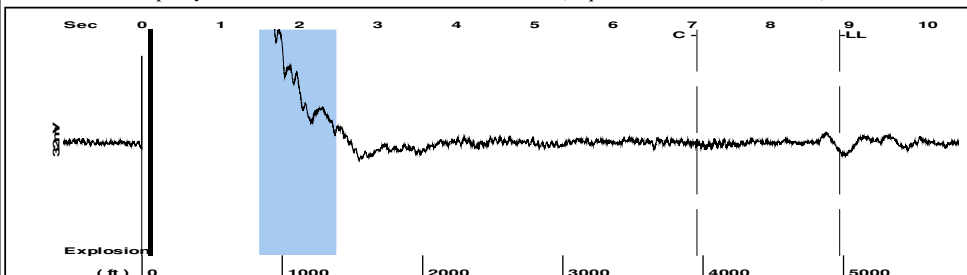
Fluid Properties

Oil API 40 deg API
 Water Specific Gravity 1.05 Sp.Gr.H2O

Casing Pressure Buildup

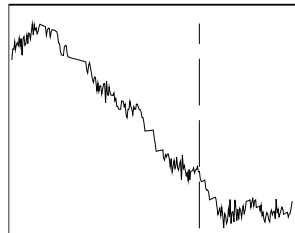
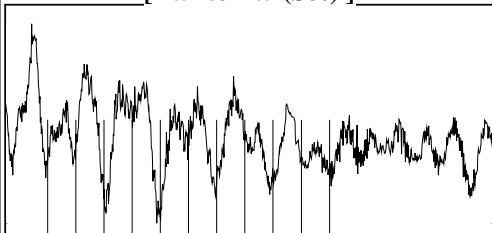
Change in Pressure 0.016 psi
 Over Change in Time 1.00 min

Group: MyWells Well: South Point Farms 1-17 FL 1 (acquired on: 11/07/14 09:40:58)



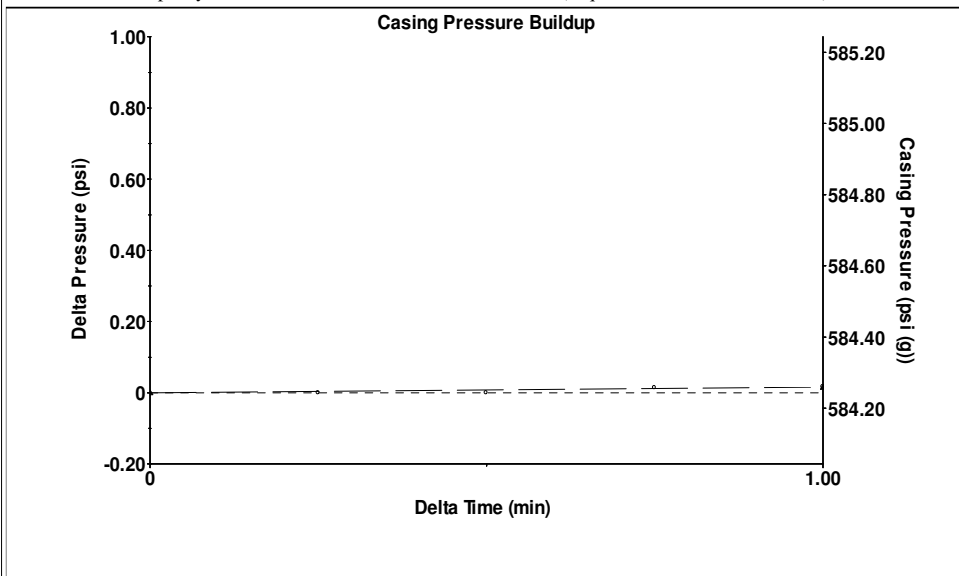
Filter Type High Pass Automatic Collar Count Yes Time 8.885 sec
 Manual Acoustic Veloc 1116.06 ft/s Manual JTS/sec 17.2712 Joints 153.909 Jts
 Depth 4972.81 ft

[1.5 to 2.5 (Sec)]



Analysis Method: Automatic

Group: MyWells Well: South Point Farms 1-17 FL 1 (acquired on: 11/07/14 09:40:58)

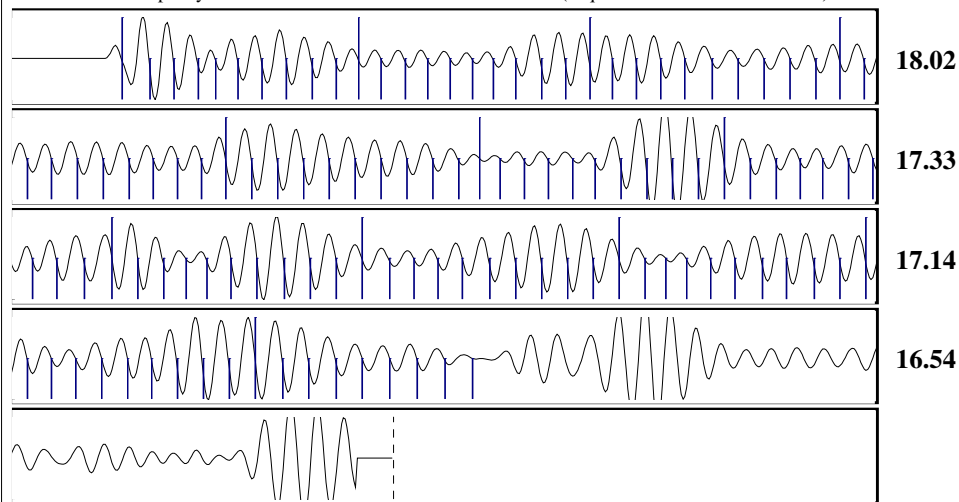


Change in Pressure 0.02 psi PT15216
 Change in Time 1.00 min Range 0 - ? psi

Group: MyWells Well: South Point Farms 1-17 FL 1 (acquired on: 11/07/14 09:40:58)

<p>Production</p> <table border="0"> <tr> <td>Current</td> <td>Potential</td> <td>Casing Pressure</td> <td>584.2 psi (g)</td> </tr> <tr> <td>Oil - *-</td> <td>- *- BBL/D</td> <td>Casing Pressure Buildup</td> <td>0.016 psi</td> </tr> <tr> <td>Water - *-</td> <td>- *- BBL/D</td> <td>Annular Gas Flow</td> <td>1.00 min</td> </tr> <tr> <td>Gas - *-</td> <td>- *- Mscf/D</td> <td>Gas/Liquid Interface Pressure</td> <td>682.0 psi (g)</td> </tr> </table> <p>IPR Method Vogel PBHP/SBHP - *- Production Efficiency 0.0</p> <table border="0"> <tr> <td>Oil 40 deg.API</td> <td>Liquid Level Depth</td> <td>4972.81 ft</td> </tr> <tr> <td>Water 1.05 Sp.Gr.H2O</td> <td>Pump Intake Depth</td> <td>5395.00 ft</td> </tr> <tr> <td>Gas 0.79 Sp.Gr.AIR</td> <td>Formation Depth</td> <td>5395.00 ft</td> </tr> </table> <p>Acoustic Velocity 1119.37 ft/s</p> <p>Formation Submergence Total Gaseous Liquid Column HT (TVD) 422 ft Equivalent Gas Free Liquid HT (TVD) 415 ft</p> <p>Acoustic Test</p>	Current	Potential	Casing Pressure	584.2 psi (g)	Oil - *-	- *- BBL/D	Casing Pressure Buildup	0.016 psi	Water - *-	- *- BBL/D	Annular Gas Flow	1.00 min	Gas - *-	- *- Mscf/D	Gas/Liquid Interface Pressure	682.0 psi (g)	Oil 40 deg.API	Liquid Level Depth	4972.81 ft	Water 1.05 Sp.Gr.H2O	Pump Intake Depth	5395.00 ft	Gas 0.79 Sp.Gr.AIR	Formation Depth	5395.00 ft		<p>Producing</p> <p>Annular Gas Flow 2 Mscf/D % Liquid 98 %</p> <p>Pump Intake 814.0 psi (g) Producing BHP 814.0 psi (g) Static BHP - *- psi (g)</p>
Current	Potential	Casing Pressure	584.2 psi (g)																								
Oil - *-	- *- BBL/D	Casing Pressure Buildup	0.016 psi																								
Water - *-	- *- BBL/D	Annular Gas Flow	1.00 min																								
Gas - *-	- *- Mscf/D	Gas/Liquid Interface Pressure	682.0 psi (g)																								
Oil 40 deg.API	Liquid Level Depth	4972.81 ft																									
Water 1.05 Sp.Gr.H2O	Pump Intake Depth	5395.00 ft																									
Gas 0.79 Sp.Gr.AIR	Formation Depth	5395.00 ft																									

Group: MyWells Well: South Point Farms 1-17 FL 1 (acquired on: 11/07/14 09:40:58)



Acoustic Velocity	1119.37 ft/s	Joints counted	118
Joints Per Second	17.3224 jts/sec	Joints to liquid level	153.909
Depth to liquid level	4972.81 ft	Filter Width	15.2712 19.2712
Automatic Collar Count	Yes	Time to 1st Collar	0.256 7.068

December 08, 2014

Tiffany Golay
SandRidge Exploration and Production LLC
123 ROBERT S. KERR AVE
OKLAHOMA CITY, OK 73102-6406

Re: Temporary Abandonment
API 15-077-21919-01-00
South Point Farms 3506 1-17H
SW/4 Sec.17-35S-06W
Harper County, Kansas

Dear Tiffany Golay:

"Your temporary abandonment (TA) application for the well listed above has been approved. In accordance with K.A.R. 82-3-111 the TA status of this well will expire 12/08/2015.

- * If you return this well to service or plug it, please notify the District Office.
- * If you sell this well you are required to file a Transfer of Operator form, T-1.
- * If the well will remain temporarily abandoned, you must submit a new TA application, CP-111, before 12/08/2015.

You may contact me at the number above if you have questions.

Very truly yours,

Steve VanGieson"