



## DRILL STEM TEST REPORT

Prepared For: **Red Oak Energy Inc.**

7701 E Kellogg Dr STE 710  
Wichita KS 67207

ATTN: Pat Deenihan

### **Rohleder Trust #2-35**

### **35-11s-34w Logan,KS**

Start Date: 2014.09.25 @ 18:52:00

End Date: 2014.09.26 @ 00:04:45

Job Ticket #: 57468                      DST #: 1

Trilobite Testing, Inc  
1515 Commerce Parkway Hays, KS 67601  
ph: 785-625-4778 fax: 785-625-5620

Printed: 2014.10.03 @ 09:12:06

Red Oak Energy Inc.

35-11s-34w Logan,KS

Rohleder Trust #2-35

DST # 1

LKC B

2014.09.25



**TRILOBITE  
TESTING, INC**

# DRILL STEM TEST REPORT

Red Oak Energy Inc.  
7701 E Kellogg Dr STE 710  
Wichita KS 67207  
ATTN: Pat Deenihan

**35-11s-34w Logan,KS**  
**Rohleder Trust #2-35**  
Job Ticket: 57468 **DST#: 1**  
Test Start: 2014.09.25 @ 18:52:00

## GENERAL INFORMATION:

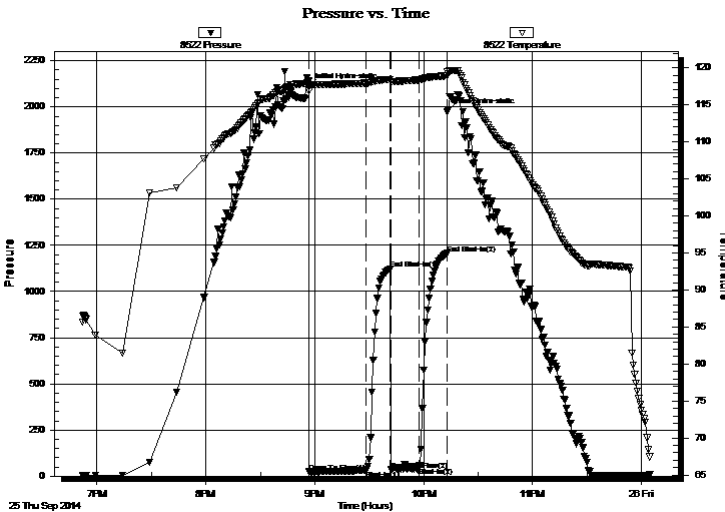
Formation: **LKC B**  
Deviated: No Whipstock: ft (KB)  
Time Tool Opened: 20:57:00  
Time Test Ended: 00:04:45  
Interval: **4102.00 ft (KB) To 4230.00 ft (KB) (TVD)**  
Total Depth: 4130.00 ft (KB) (TVD)  
Hole Diameter: 7.88 inches Hole Condition: Poor  
Test Type: Conventional Bottom Hole (Initial)  
Tester: Justin Harris  
Unit No: 69  
Reference Elevations: 3046.00 ft (KB)  
3035.00 ft (CF)  
KB to GR/CF: 11.00 ft

## Serial #: 8522 Outside

Press@RunDepth: 45.65 psig @ 4103.00 ft (KB) Capacity: 8000.00 psig  
Start Date: 2014.09.25 End Date: 2014.09.26 Last Calib.: 2014.09.26  
Start Time: 18:52:05 End Time: 00:04:44 Time On Btm: 2014.09.25 @ 20:56:45  
Time Off Btm: 2014.09.25 @ 22:13:00

TEST COMMENT: 30: Couple bubbles died.  
15: No Return.  
15: No Blow .  
15: No Return.

## PRESSURE SUMMARY



Time (Min.)	Pressure (psig)	Temp (deg F)	Annotation
0	2107.72	118.21	Initial Hydro-static
1	22.57	116.96	Open To Flow (1)
32	30.52	117.94	Shut-In(1)
45	1120.23	118.45	End Shut-In(1)
46	33.22	118.12	Open To Flow (2)
61	45.65	118.37	Shut-In(2)
76	1206.74	118.94	End Shut-In(2)
77	1971.98	119.48	Final Hydro-static

## Recovery

Length (ft)	Description	Volume (bbl)
10.00	Mud	0.05

## Gas Rates

Choke (inches)	Pressure (psig)	Gas Rate (Mcf/d)



**TRIOBITE  
TESTING, INC.**

## DRILL STEM TEST REPORT

Red Oak Energy Inc.  
7701 E Kellogg Dr STE 710  
Wichita KS 67207  
ATTN: Pat Deenihan

**35-11s-34w Logan,KS**  
**Rohleder Trust #2-35**  
Job Ticket: 57468      **DST#: 1**  
Test Start: 2014.09.25 @ 18:52:00

### GENERAL INFORMATION:

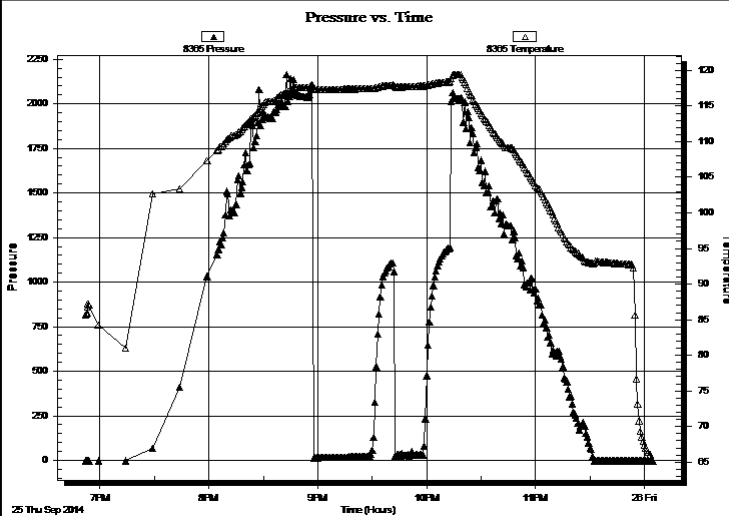
<b>Formation:</b> <b>LKC B</b>	
<b>Deviated:</b> No      Whipstock:      ft (KB)	<b>Test Type:</b> Conventional Bottom Hole (Initial)
<b>Time Tool Opened:</b> 20:57:00	<b>Tester:</b> Justin Harris
<b>Time Test Ended:</b> 00:04:45	<b>Unit No:</b> 69
<b>Interval:</b> <b>4102.00 ft (KB) To 4230.00 ft (KB) (TVD)</b>	<b>Reference Elevations:</b> 3046.00 ft (KB)
<b>Total Depth:</b> 4130.00 ft (KB) (TVD)	3035.00 ft (CF)
<b>Hole Diameter:</b> 7.88 inches	<b>Hole Condition:</b> Poor
	<b>KB to GR/CF:</b> 11.00 ft

### Serial #: 8365

Inside

<b>Press@RunDepth:</b> psig @      4103.00 ft (KB)	<b>Capacity:</b> 8000.00 psig
<b>Start Date:</b> 2014.09.25 <b>End Date:</b> 2014.09.26	<b>Last Calib.:</b> 2014.09.26
<b>Start Time:</b> 18:52:05 <b>End Time:</b> 00:04:59	<b>Time On Btm:</b>
	<b>Time Off Btm:</b>

**TEST COMMENT:** 30: Couple bubbles died.  
15: No Return.  
15: No Blow .  
15: No Return.



### PRESSURE SUMMARY

Time (Min.)	Pressure (psig)	Temp (deg F)	Annotation

### Recovery

Length (ft)	Description	Volume (bbl)
10.00	Mud	0.05

### Gas Rates

Choke (inches)	Pressure (psig)	Gas Rate (Mcf/d)



**TRILOBITE  
TESTING, INC**

# DRILL STEM TEST REPORT

**TOOL DIAGRAM**

Red Oak Energy Inc.

**35-11s-34w Logan,KS**

7701 E Kellogg Dr STE 710  
Wichita KS 67207

**Rohleder Trust #2-35**

Job Ticket: 57468

**DST#: 1**

ATTN: Pat Deenihan

Test Start: 2014.09.25 @ 18:52:00

## Tool Information

Drill Pipe:	Length: 3849.00 ft	Diameter: 3.80 inches	Volume: 53.99 bbl	Tool Weight: 2500.00 lb
Heavy Wt. Pipe:	Length: 0.00 ft	Diameter: inches	Volume: 0.00 bbl	Weight set on Packer: 30000.00 lb
Drill Collar:	Length: 238.00 ft	Diameter: 2.25 inches	Volume: 1.17 bbl	Weight to Pull Loose: 75000.00 lb
			<u>Total Volume: 55.16 bbl</u>	Tool Chased 0.00 ft
Drill Pipe Above KB:	10.00 ft			String Weight: Initial 62000.00 lb
Depth to Top Packer:	4102.00 ft			Final 62000.00 lb
Depth to Bottom Packer:	ft			
Interval between Packers:	28.00 ft			
Tool Length:	53.00 ft			
Number of Packers:	2	Diameter: 6.75 inches		

Tool Comments:

## Tool Description

Tool Description	Length (ft)	Serial No.	Position	Depth (ft)	Accum. Lengths
Change Over Sub	1.00			4078.00	
Shut In Tool	5.00			4083.00	
Hydraulic tool	5.00			4088.00	
Jars	5.00			4093.00	
Packer	5.00			4098.00	25.00 Bottom Of Top Packer
Packer	4.00			4102.00	
Stubb	1.00			4103.00	
Recorder	0.00	8365	Inside	4103.00	
Recorder	0.00	8522	Outside	4103.00	
Perforations	24.00			4127.00	
Bullnose	3.00			4130.00	28.00 Bottom Packers & Anchor

**Total Tool Length: 53.00**



**TRILOBITE  
TESTING, INC**

# DRILL STEM TEST REPORT

## FLUID SUMMARY

Red Oak Energy Inc.

**35-11s-34w Logan,KS**

7701 E Kellogg Dr STE 710  
Wichita KS 67207

**Rohleder Trust #2-35**

Job Ticket: 57468

**DST#: 1**

ATTN: Pat Deenihan

Test Start: 2014.09.25 @ 18:52:00

### Mud and Cushion Information

Mud Type: Gel Chem

Cushion Type:

Oil API:

0 deg API

Mud Weight: 9.00 lb/gal

Cushion Length:

ft

Water Salinity:

0 ppm

Viscosity: 63.00 sec/qt

Cushion Volume:

bbbl

Water Loss: 5.98 in<sup>3</sup>

Gas Cushion Type:

Resistivity: ohm.m

Gas Cushion Pressure:

psig

Salinity: 1800.00 ppm

Filter Cake: 2.00 inches

### Recovery Information

Recovery Table

Length ft	Description	Volume bbl
10.00	Mud	0.049

Total Length: 10.00 ft      Total Volume: 0.049 bbl

Num Fluid Samples: 0

Num Gas Bombs: 0

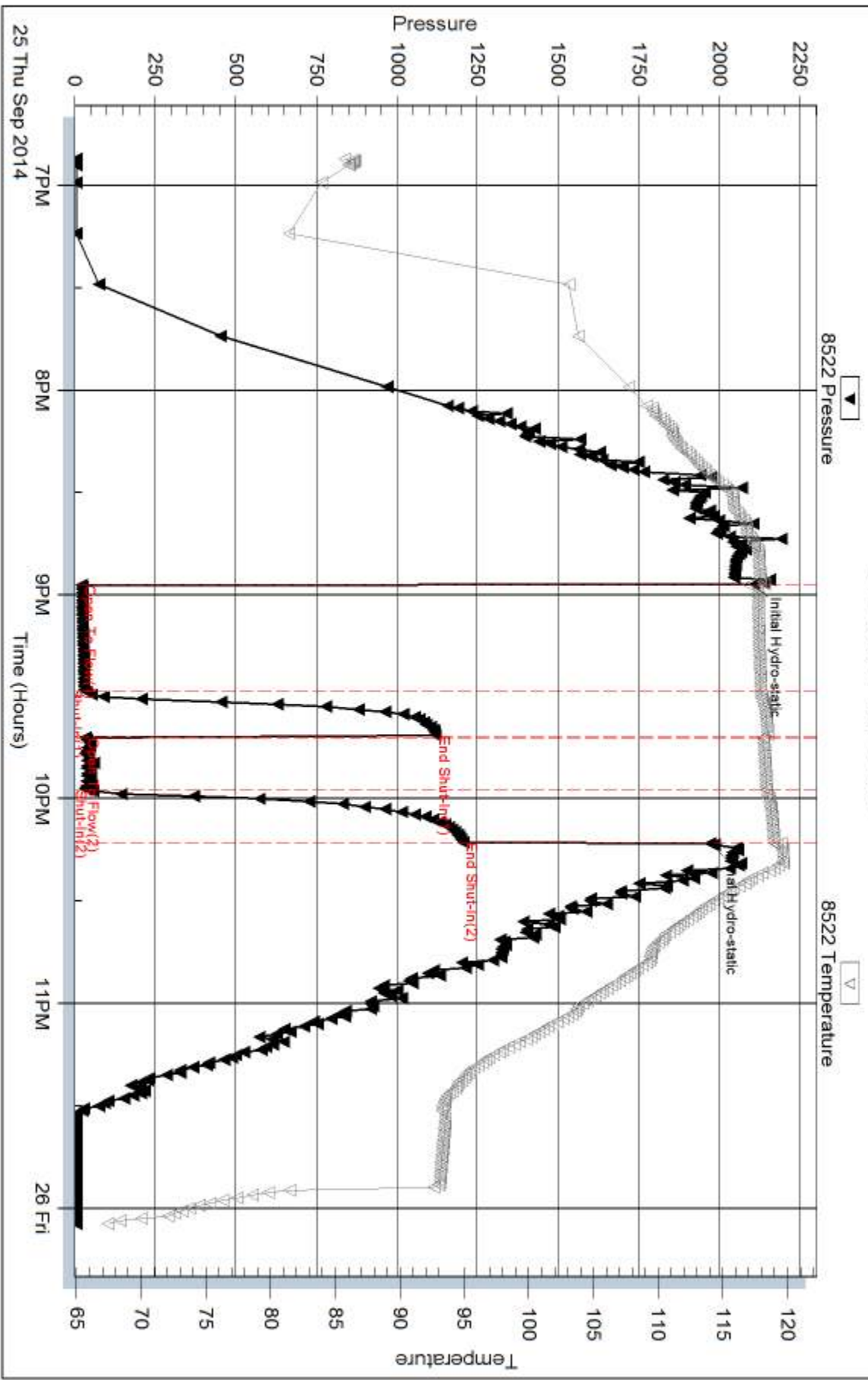
Serial #:

Laboratory Name:

Laboratory Location:

Recovery Comments:

### Pressure vs. Time



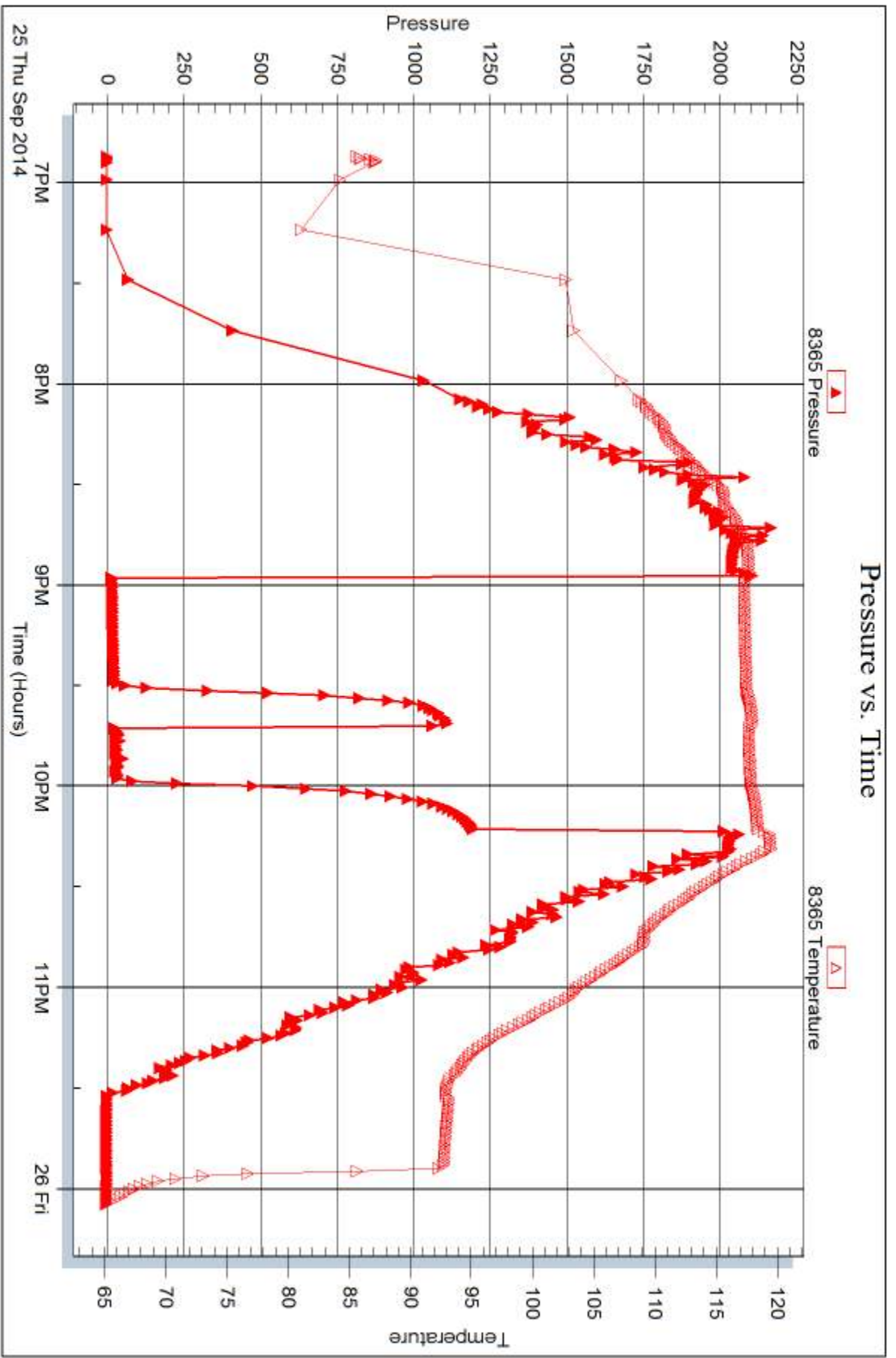
Serial #: 8365

Inside

Red Oak Energy Inc.

Rohleder Trust #2-35

DST Test Number: 1





## DRILL STEM TEST REPORT

Prepared For: **Red Oak Energy Inc.**

7701 E Kellogg Dr STE 710  
Wichita KS 67207

ATTN: Pat Deenihan

### **Rohleder Trust #2-35**

### **35-11s-34w Logan,KS**

Start Date: 2014.09.26 @ 11:29:00

End Date: 2014.09.26 @ 16:23:45

Job Ticket #: 57469                      DST #: 2

Trilobite Testing, Inc  
1515 Commerce Parkway Hays, KS 67601  
ph: 785-625-4778 fax: 785-625-5620

Printed: 2014.10.03 @ 09:11:43





**TRILOBITE  
TESTING, INC**

# DRILL STEM TEST REPORT

Red Oak Energy Inc.  
7701 E Kellogg Dr STE 710  
Wichita KS 67207  
ATTN: Pat Deenihan

**35-11s-34w Logan,KS**  
**Rohleder Trust #2-35**  
Job Ticket: 57469 **DST#: 2**  
Test Start: 2014.09.26 @ 11:29:00

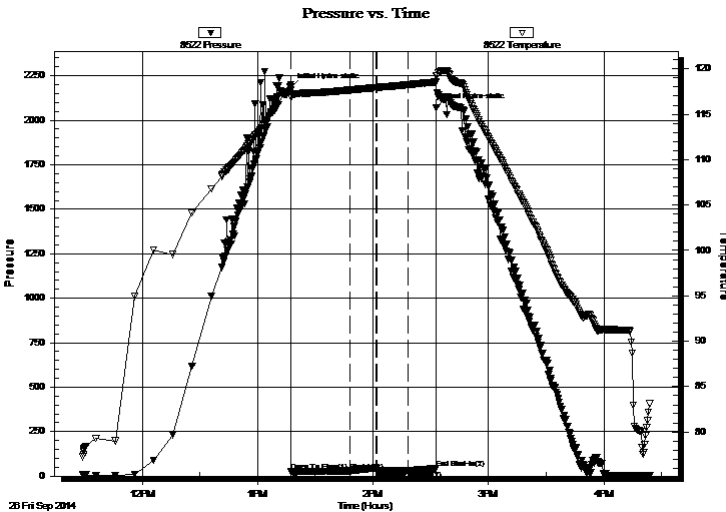
## GENERAL INFORMATION:

Formation: **LKC H**  
Deviated: No Whipstock: ft (KB)  
Time Tool Opened: 13:17:30  
Time Test Ended: 16:23:45  
Interval: **4218.00 ft (KB) To 4246.00 ft (KB) (TVD)**  
Total Depth: 4246.00 ft (KB) (TVD)  
Hole Diameter: 7.88 inches Hole Condition: Poor  
Test Type: Conventional Bottom Hole (Reset)  
Tester: Justin Harris  
Unit No: 69  
Reference Elevations: 3046.00 ft (KB)  
3035.00 ft (CF)  
KB to GR/CF: 11.00 ft

**Serial #: 8522 Outside**  
Press@RunDepth: 30.79 psig @ 4219.00 ft (KB) Capacity: 8000.00 psig  
Start Date: 2014.09.26 End Date: 2014.09.26 Last Calib.: 2014.09.26  
Start Time: 11:29:05 End Time: 16:23:44 Time On Btm: 2014.09.26 @ 13:17:00  
Time Off Btm: 2014.09.26 @ 14:33:00

TEST COMMENT: 30: Weak blow died in 5 mins.  
30: No Return.  
30: No Blow .  
30: No Return.

## PRESSURE SUMMARY



Time (Min.)	Pressure (psig)	Temp (deg F)	Annotation
0	2185.83	117.63	Initial Hydro-static
1	24.36	116.89	Open To Flow (1)
31	29.68	117.67	Shut-In(1)
45	40.49	117.94	End Shut-In(1)
45	25.14	117.94	Open To Flow (2)
61	30.79	118.25	Shut-In(2)
76	42.03	118.56	End Shut-In(2)
76	2071.71	119.26	Final Hydro-static

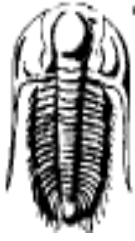
## Recovery

Length (ft)	Description	Volume (bbl)
10.00	Mud w ith oil spots	0.05

\* Recovery from multiple tests

## Gas Rates

	Choke (inches)	Pressure (psig)	Gas Rate (Mcf/d)



# TRILOBITE TESTING, INC.

## DRILL STEM TEST REPORT

Red Oak Energy Inc.

**35-11s-34w Logan,KS**

7701 E Kellogg Dr STE 710  
Wichita KS 67207

**Rohleder Trust #2-35**

Job Ticket: 57469

**DST#: 2**

ATTN: Pat Deenihan

Test Start: 2014.09.26 @ 11:29:00

### GENERAL INFORMATION:

Formation: **LKC H**

Deviated: No Whipstock: ft (KB)

Test Type: Conventional Bottom Hole (Reset)

Time Tool Opened: 13:17:30

Tester: Justin Harris

Time Test Ended: 16:23:45

Unit No: 69

**Interval: 4218.00 ft (KB) To 4246.00 ft (KB) (TVD)**

Reference Elevations: 3046.00 ft (KB)

Total Depth: 4246.00 ft (KB) (TVD)

3035.00 ft (CF)

Hole Diameter: 7.88 inches Hole Condition: Poor

KB to GR/CF: 11.00 ft

**Serial #: 8365** Inside

Press@RunDepth: psig @ 4219.00 ft (KB)

Capacity: 8000.00 psig

Start Date: 2014.09.26

End Date: 2014.09.26

Last Calib.: 2014.09.26

Start Time: 11:29:05

End Time: 16:23:14

Time On Btm:

Time Off Btm:

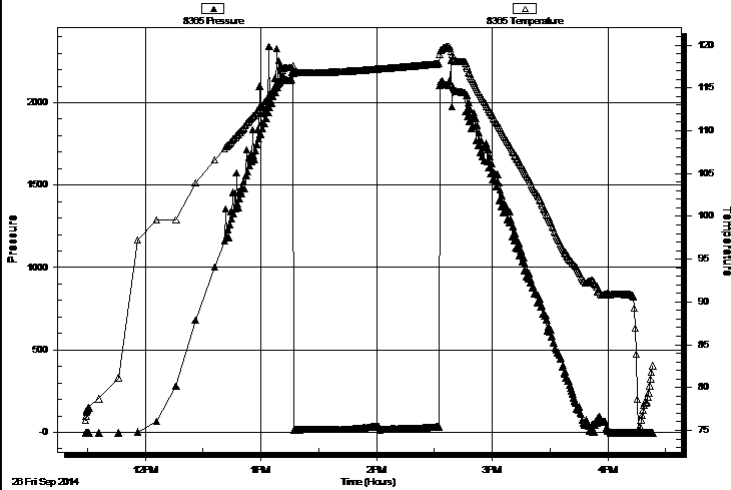
TEST COMMENT: 30: Weak blow died in 5 mins.

30: No Return.

30: No Blow .

30: No Return.

Pressure vs. Time



### PRESSURE SUMMARY

Time (Min.)	Pressure (psig)	Temp (deg F)	Annotation

### Recovery

Length (ft)	Description	Volume (bbl)
10.00	Mud with oil spots	0.05

\* Recovery from multiple tests

### Gas Rates

Choke (inches)	Pressure (psig)	Gas Rate (Mcf/d)



**TRILOBITE  
TESTING, INC**

# DRILL STEM TEST REPORT

**TOOL DIAGRAM**

Red Oak Energy Inc.

**35-11s-34w Logan,KS**

7701 E Kellogg Dr STE 710  
Wichita KS 67207

**Rohleder Trust #2-35**

Job Ticket: 57469

**DST#: 2**

ATTN: Pat Deenihan

Test Start: 2014.09.26 @ 11:29:00

## Tool Information

Drill Pipe:	Length: 3975.00 ft	Diameter: 3.80 inches	Volume: 55.76 bbl	Tool Weight: 2500.00 lb
Heavy Wt. Pipe:	Length: 0.00 ft	Diameter: inches	Volume: 0.00 bbl	Weight set on Packer: 30000.00 lb
Drill Collar:	Length: 238.00 ft	Diameter: 2.25 inches	Volume: 1.17 bbl	Weight to Pull Loose: 75000.00 lb
			<u>Total Volume: 56.93 bbl</u>	Tool Chased 0.00 ft
Drill Pipe Above KB:	20.00 ft			String Weight: Initial 64000.00 lb
Depth to Top Packer:	4218.00 ft			Final 64000.00 lb
Depth to Bottom Packer:	ft			
Interval between Packers:	28.00 ft			
Tool Length:	53.00 ft			
Number of Packers:	2	Diameter: 6.75 inches		

Tool Comments:

Tool Description	Length (ft)	Serial No.	Position	Depth (ft)	Accum. Lengths
------------------	-------------	------------	----------	------------	----------------

Change Over Sub	1.00			4194.00	
Shut In Tool	5.00			4199.00	
Hydraulic tool	5.00			4204.00	
Jars	5.00			4209.00	
Packer	5.00			4214.00	25.00 Bottom Of Top Packer
Packer	4.00			4218.00	
Stubb	1.00			4219.00	
Recorder	0.00	8365	Inside	4219.00	
Recorder	0.00	8522	Outside	4219.00	
Perforations	24.00			4243.00	
Bullnose	3.00			4246.00	28.00 Bottom Packers & Anchor

**Total Tool Length: 53.00**



**TRILOBITE  
TESTING, INC**

# DRILL STEM TEST REPORT

## FLUID SUMMARY

Red Oak Energy Inc.

**35-11s-34w Logan,KS**

7701 E Kellogg Dr STE 710  
Wichita KS 67207

**Rohleder Trust #2-35**

Job Ticket: 57469

**DST#: 2**

ATTN: Pat Deenihan

Test Start: 2014.09.26 @ 11:29:00

### Mud and Cushion Information

Mud Type: Gel Chem

Cushion Type:

Oil API:

0 deg API

Mud Weight: 9.00 lb/gal

Cushion Length:

ft

Water Salinity:

0 ppm

Viscosity: 55.00 sec/qt

Cushion Volume:

bbf

Water Loss: 6.38 in<sup>3</sup>

Gas Cushion Type:

Resistivity: ohm.m

Gas Cushion Pressure:

psig

Salinity: 1700.00 ppm

Filter Cake: 2.00 inches

### Recovery Information

Recovery Table

Length ft	Description	Volume bbf
10.00	Mud w ith oil spots	0.049

Total Length: 10.00 ft      Total Volume: 0.049 bbf

Num Fluid Samples: 0

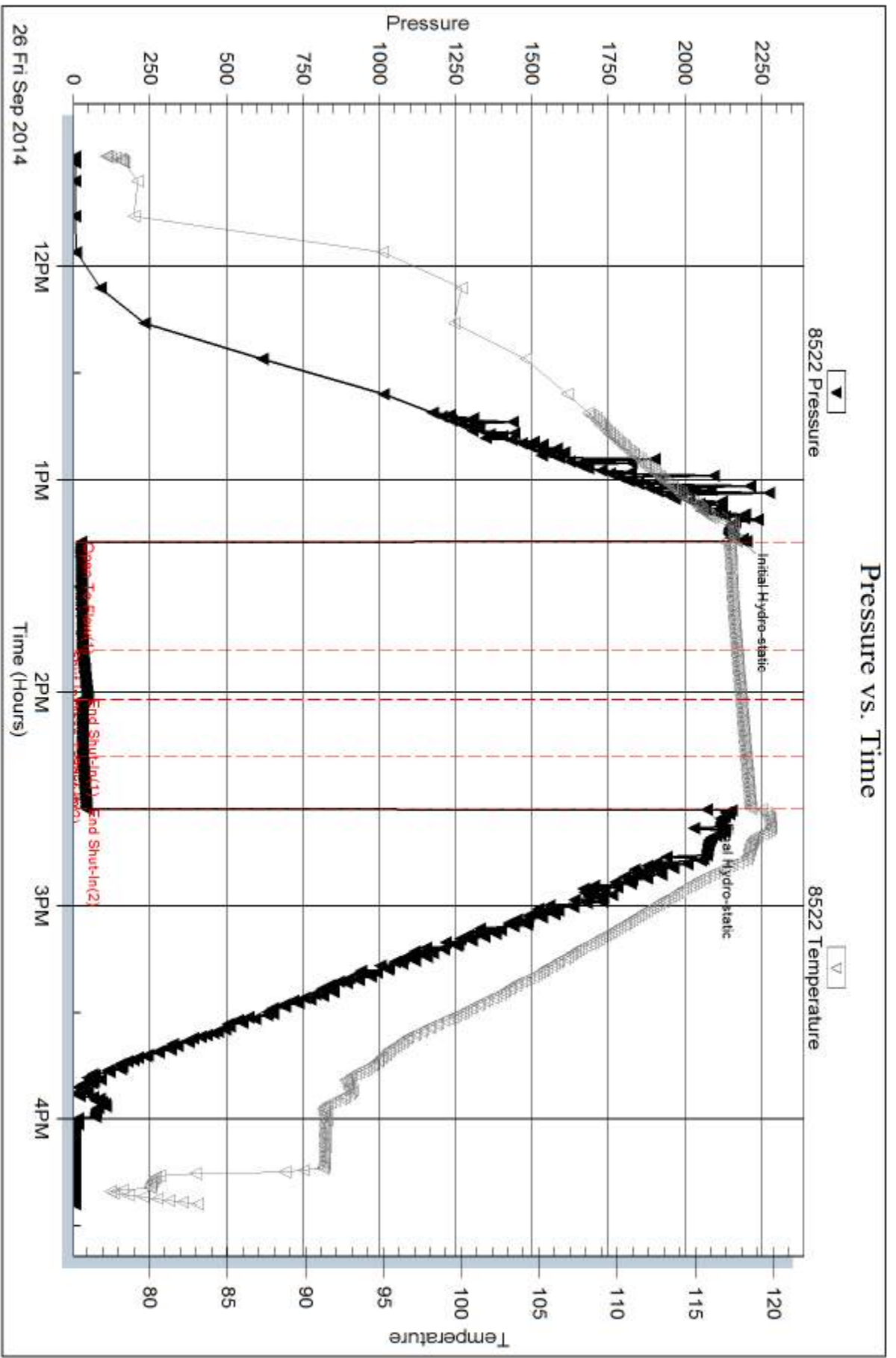
Num Gas Bombs: 0

Serial #:

Laboratory Name:

Laboratory Location:

Recovery Comments:



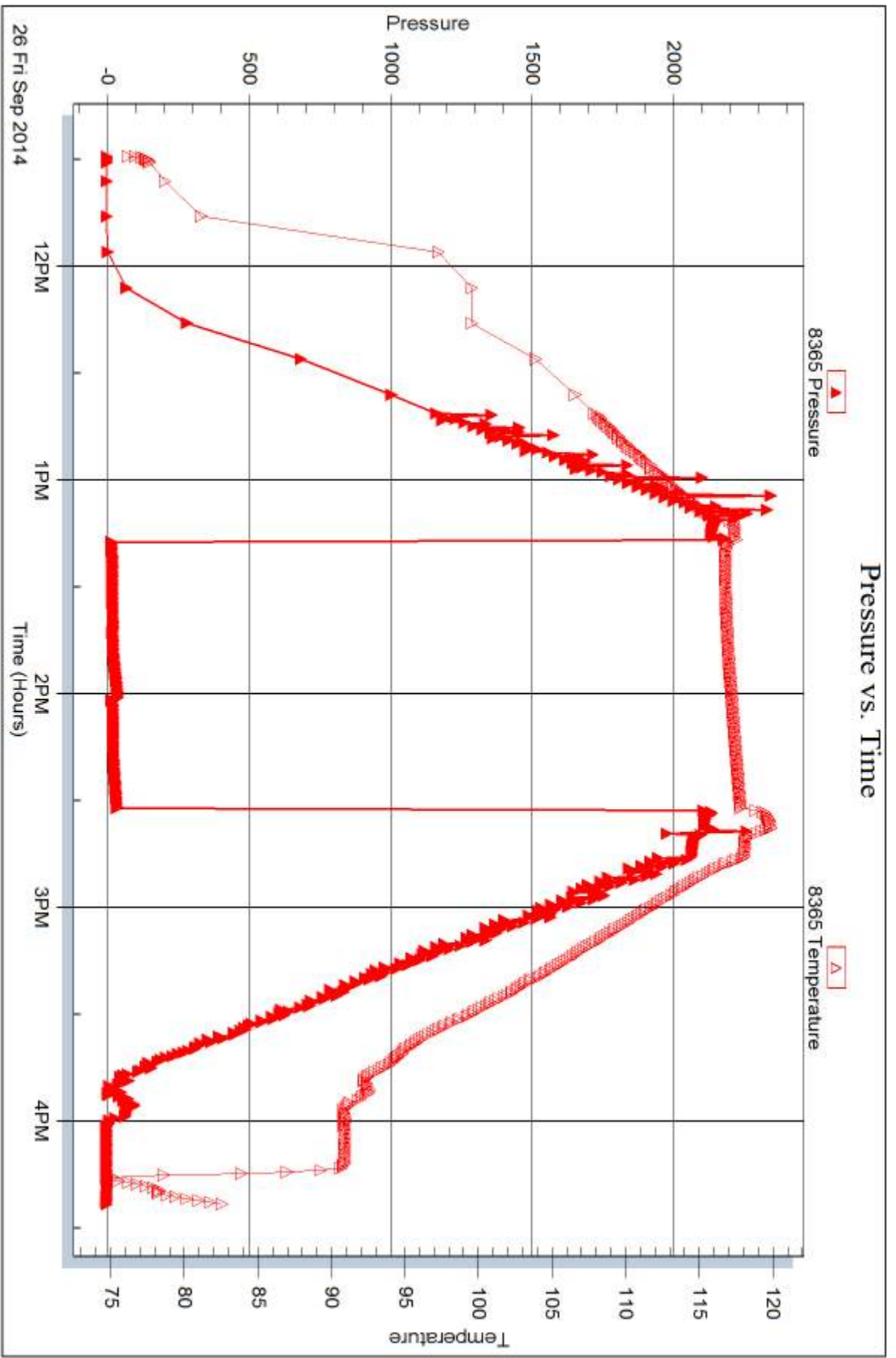
Serial #: 8365

Inside

Red Oak Energy Inc.

Rohleder Trust #2-35

DST Test Number: 2



Trilobite Testing, Inc

Ref. No: 57469

Printed: 2014, 10:03 @ 09:11:44



## DRILL STEM TEST REPORT

Prepared For: **Red Oak Energy Inc.**

7701 E Kellogg Dr STE 710  
Wichita KS 67207

ATTN: Pat Deenihan

### **Rohleder Trust #2-35**

### **35-11s-34w Logan,KS**

Start Date: 2014.09.27 @ 01:38:00

End Date: 2014.09.27 @ 07:29:15

Job Ticket #: 57470                      DST #: 3

Trilobite Testing, Inc  
1515 Commerce Parkway Hays, KS 67601  
ph: 785-625-4778 fax: 785-625-5620

Printed: 2014.10.03 @ 09:11:18



**TRILOBITE  
TESTING, INC**

# DRILL STEM TEST REPORT

Red Oak Energy Inc.

**35-11s-34w Logan,KS**

7701 E Kellogg Dr STE 710  
Wichita KS 67207

**Rohleder Trust #2-35**

ATTN: Pat Deenihan

Job Ticket: 57470

**DST#: 3**

Test Start: 2014.09.27 @ 01:38:00

## GENERAL INFORMATION:

Formation: **LKC I**

Deviated: No Whipstock: ft (KB)

Time Tool Opened: 03:34:15

Time Test Ended: 07:29:15

Test Type: Conventional Bottom Hole (Reset)

Tester: Justin Harris

Unit No: 69

**Interval: 4245.00 ft (KB) To 4274.00 ft (KB) (TVD)**

Reference Elevations: 3046.00 ft (KB)

Total Depth: 4274.00 ft (KB) (TVD)

3035.00 ft (CF)

Hole Diameter: 7.88 inches Hole Condition: Poor

KB to GR/CF: 11.00 ft

**Serial #: 8522 Outside**

Press@RunDepth: 21.78 psig @ 4246.00 ft (KB)

Capacity: 8000.00 psig

Start Date: 2014.09.27 End Date: 2014.09.27

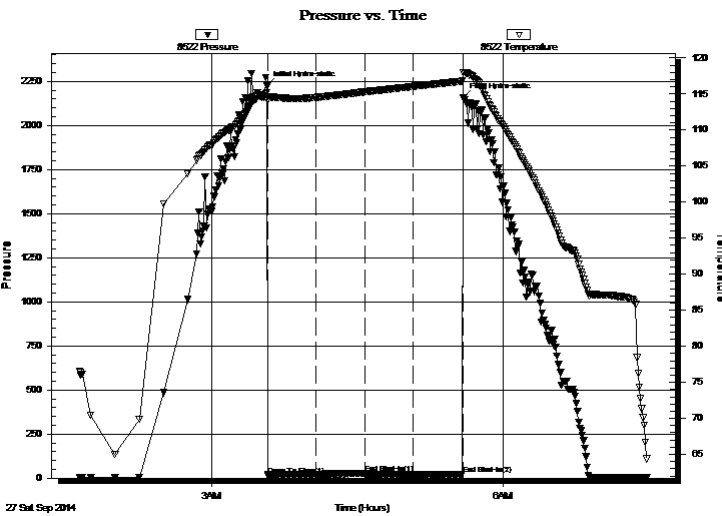
Last Calib.: 2014.09.27

Start Time: 01:38:05 End Time: 07:29:14

Time On Btm: 2014.09.27 @ 03:34:00

Time Off Btm: 2014.09.27 @ 05:35:30

TEST COMMENT: 30: Weak Blow died in 5 min.  
30: No Return.  
30: No Blow .  
30: No Return.



## PRESSURE SUMMARY

Time (Min.)	Pressure (psig)	Temp (deg F)	Annotation
0	2224.10	115.23	Initial Hydro-static
1	17.91	114.16	Open To Flow (1)
30	21.21	114.52	Shut-In(1)
61	27.07	115.30	End Shut-In(1)
61	21.65	115.31	Open To Flow (2)
90	21.78	116.05	Shut-In(2)
121	22.91	116.79	End Shut-In(2)
122	2156.94	118.01	Final Hydro-static

## Recovery

Length (ft)	Description	Volume (bbl)
5.00	Mud	0.02

\* Recovery from multiple tests

## Gas Rates

	Choke (inches)	Pressure (psig)	Gas Rate (Mcf/d)





**TRILOBITE TESTING, INC.**

# DRILL STEM TEST REPORT

Red Oak Energy Inc.

**35-11s-34w Logan,KS**

7701 E Kellogg Dr STE 710  
Wichita KS 67207

**Rohleder Trust #2-35**

Job Ticket: 57470

**DST#: 3**

ATTN: Pat Deenihan

Test Start: 2014.09.27 @ 01:38:00

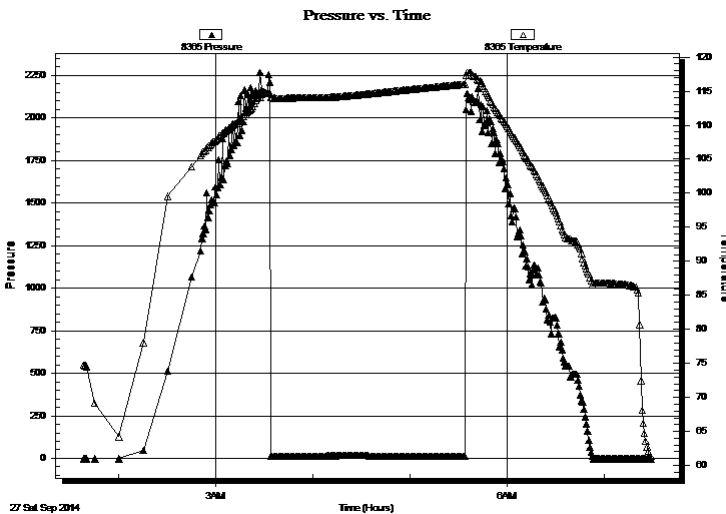
## GENERAL INFORMATION:

Formation: **LKC I**  
Deviated: No Whipstock: ft (KB)  
Time Tool Opened: 03:34:15  
Time Test Ended: 07:29:15  
Test Type: Conventional Bottom Hole (Reset)  
Tester: Justin Harris  
Unit No: 69  
**Interval: 4245.00 ft (KB) To 4274.00 ft (KB) (TVD)**  
Reference Elevations: 3046.00 ft (KB)  
Total Depth: 4274.00 ft (KB) (TVD)  
3035.00 ft (CF)  
Hole Diameter: 7.88 inches Hole Condition: Poor  
KB to GR/CF: 11.00 ft

### Serial #: 8365

Press@RunDepth: psig @ ft (KB)  
Capacity: 8000.00 psig  
Start Date: 2014.09.27 End Date: 2014.09.27 Last Calib.: 2014.09.27  
Start Time: 01:38:05 End Time: 07:28:44  
Time On Btm:  
Time Off Btm:

TEST COMMENT: 30: Weak Blow died in 5 min.  
30: No Return.  
30: No Blow.  
30: No Return.



## PRESSURE SUMMARY

Time (Min.)	Pressure (psig)	Temp (deg F)	Annotation

## Recovery

Length (ft)	Description	Volume (bbl)
5.00	Mud	0.02

## Gas Rates

Choke (inches)	Pressure (psig)	Gas Rate (Mcf/d)

\* Recovery from multiple tests



**TRILOBITE  
TESTING, INC**

# DRILL STEM TEST REPORT

**TOOL DIAGRAM**

Red Oak Energy Inc.

**35-11s-34w Logan,KS**

7701 E Kellogg Dr STE 710  
Wichita KS 67207

**Rohleder Trust #2-35**

Job Ticket: 57470

**DST#: 3**

ATTN: Pat Deenihan

Test Start: 2014.09.27 @ 01:38:00

## Tool Information

Drill Pipe:	Length: 4007.00 ft	Diameter: 3.80 inches	Volume: 56.21 bbl	Tool Weight: 2500.00 lb
Heavy Wt. Pipe:	Length: 0.00 ft	Diameter: inches	Volume: 0.00 bbl	Weight set on Packer: 30000.00 lb
Drill Collar:	Length: 238.00 ft	Diameter: 2.25 inches	Volume: 1.17 bbl	Weight to Pull Loose: 75000.00 lb
			<u>Total Volume: 57.38 bbl</u>	Tool Chased 0.00 ft
Drill Pipe Above KB:	20.00 ft			String Weight: Initial 62000.00 lb
Depth to Top Packer:	4245.00 ft			Final 62000.00 lb
Depth to Bottom Packer:	ft			
Interval between Packers:	29.00 ft			
Tool Length:	49.00 ft			
Number of Packers:	2	Diameter: 6.75 inches		

Tool Comments:

## Tool Description

Tool Description	Length (ft)	Serial No.	Position	Depth (ft)	Accum. Lengths
Change Over Sub	1.00			4226.00	
Shut In Tool	5.00			4231.00	
Hydraulic tool	5.00			4236.00	
Packer	5.00			4241.00	20.00 Bottom Of Top Packer
Packer	4.00			4245.00	
Stubb	1.00			4246.00	
Recorder	0.00	8678	Inside	4246.00	
Recorder	0.00	8522	Outside	4246.00	
Perforations	25.00			4271.00	
Bullnose	3.00			4274.00	29.00 Bottom Packers & Anchor
<b>Total Tool Length:</b>	<b>49.00</b>				



**TRILOBITE  
TESTING, INC**

# DRILL STEM TEST REPORT

## FLUID SUMMARY

Red Oak Energy Inc.

**35-11s-34w Logan,KS**

7701 E Kellogg Dr STE 710  
Wichita KS 67207

**Rohleder Trust #2-35**

Job Ticket: 57470

**DST#: 3**

ATTN: Pat Deenihan

Test Start: 2014.09.27 @ 01:38:00

### Mud and Cushion Information

Mud Type: Gel Chem

Cushion Type:

Oil API:

0 deg API

Mud Weight: 9.00 lb/gal

Cushion Length:

ft

Water Salinity:

0 ppm

Viscosity: 55.00 sec/qt

Cushion Volume:

bbl

Water Loss: 6.39 in<sup>3</sup>

Gas Cushion Type:

Resistivity: ohm.m

Gas Cushion Pressure:

psig

Salinity: 1700.00 ppm

Filter Cake: 2.00 inches

### Recovery Information

Recovery Table

Length ft	Description	Volume bbl
5.00	Mud	0.025

Total Length: 5.00 ft      Total Volume: 0.025 bbl

Num Fluid Samples: 0

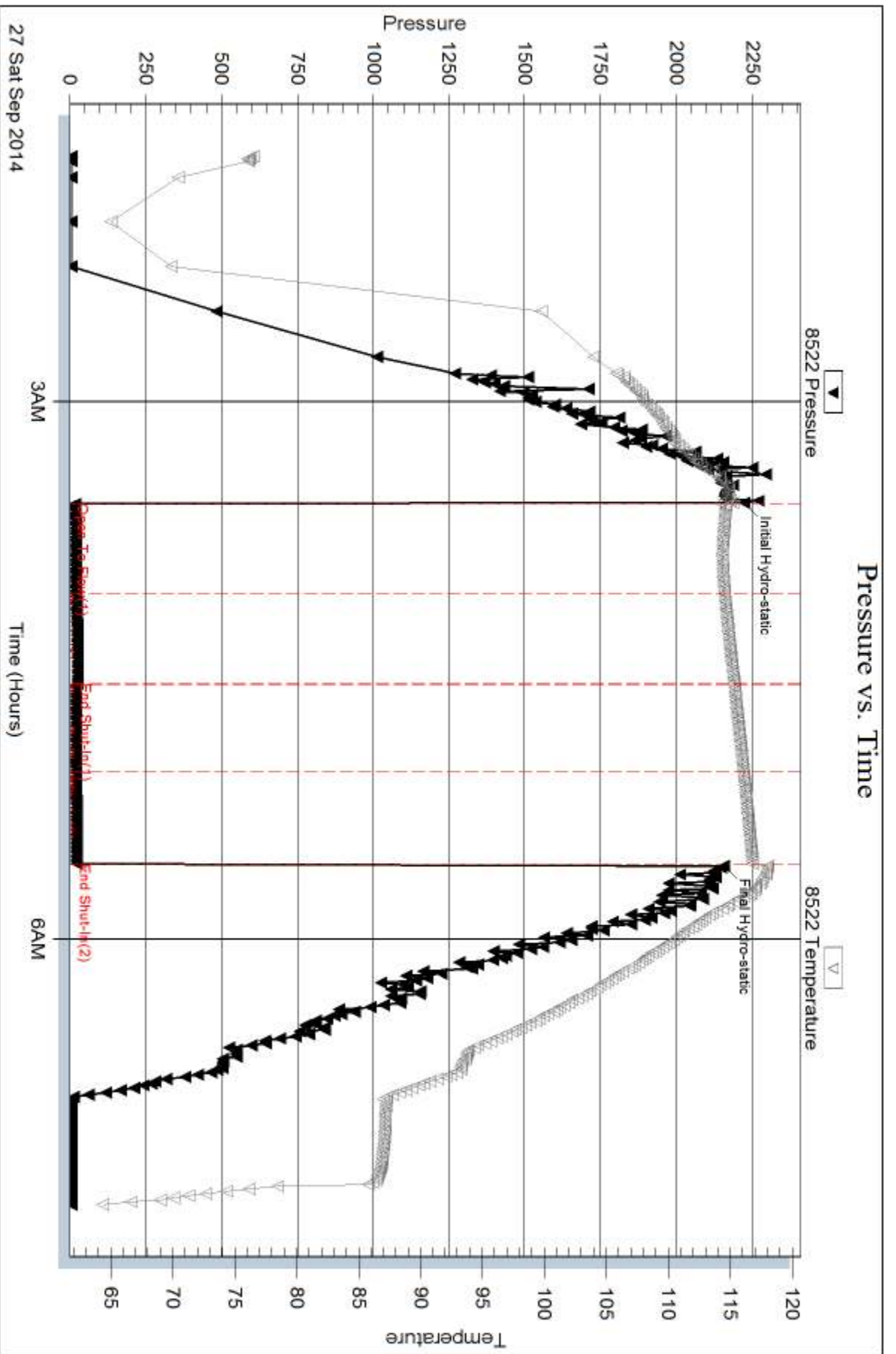
Num Gas Bombs: 0

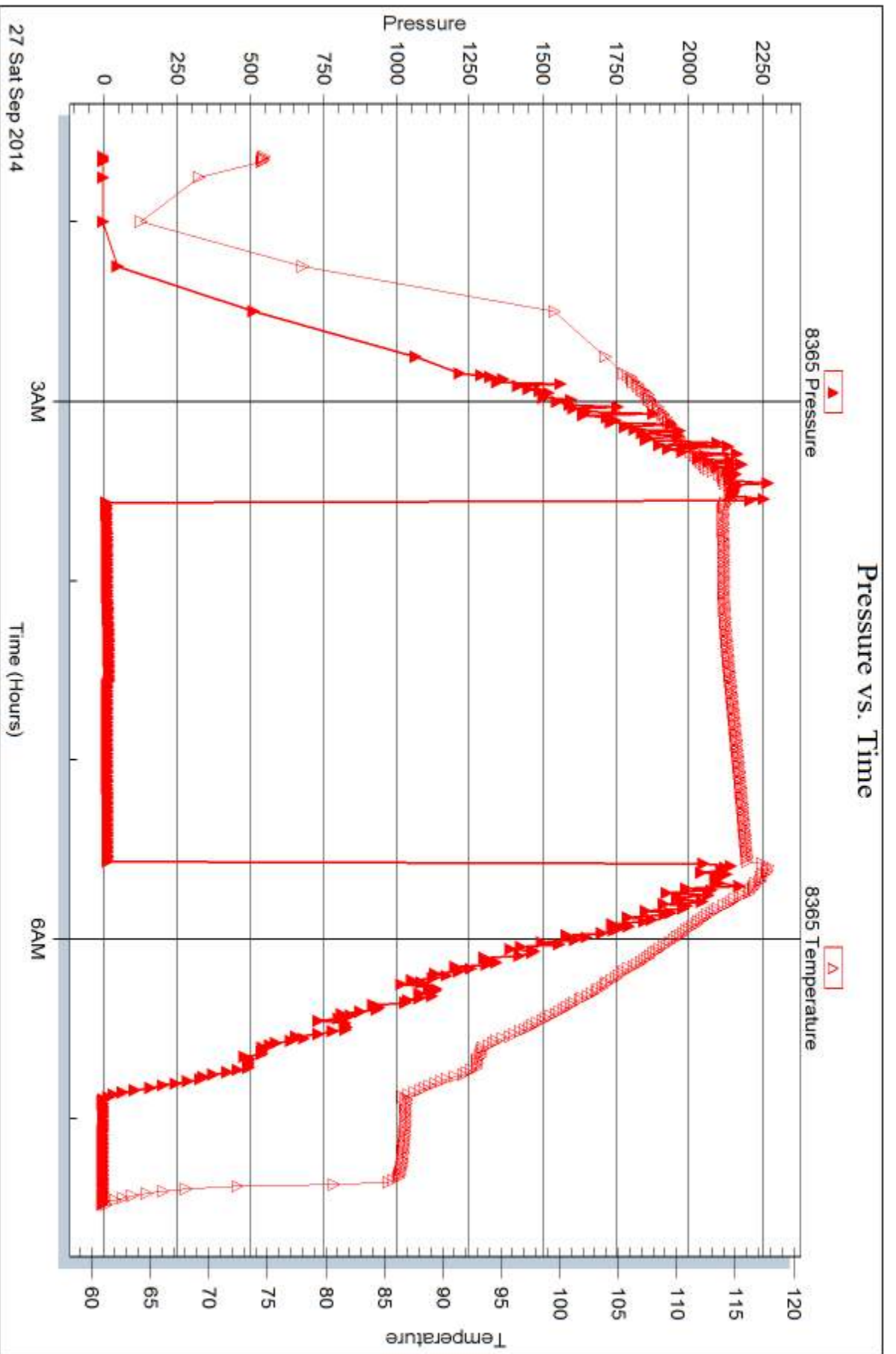
Serial #:

Laboratory Name:

Laboratory Location:

Recovery Comments:







## DRILL STEM TEST REPORT

Prepared For: **Red Oak Energy Inc.**

7701 E Kellogg Dr STE 710  
Wichita KS 67207

ATTN: Pat Deenihan

### **Rohleder Trust #2-35**

### **35-11s-34w Logan,KS**

Start Date: 2014.09.27 @ 14:39:00

End Date: 2014.09.27 @ 22:27:45

Job Ticket #: 57471                      DST #: 4

Trilobite Testing, Inc  
1515 Commerce Parkway Hays, KS 67601  
ph: 785-625-4778 fax: 785-625-5620

Printed: 2014.10.03 @ 09:10:56



**TRILOBITE  
TESTING, INC**

# DRILL STEM TEST REPORT

Red Oak Energy Inc.

**35-11s-34w Logan,KS**

7701 E Kellogg Dr STE 710  
Wichita KS 67207

**Rohleder Trust #2-35**

Job Ticket: 57471

**DST#: 4**

ATTN: Pat Deenihan

Test Start: 2014.09.27 @ 14:39:00

## GENERAL INFORMATION:

Formation: **LKC J**

Deviated: No Whipstock: ft (KB)

Time Tool Opened: 16:25:00

Time Test Ended: 22:27:45

Test Type: Conventional Bottom Hole (Reset)

Tester: Justin Harris

Unit No: 69

**Interval: 4274.00 ft (KB) To 4297.00 ft (KB) (TVD)**

Reference Elevations: 3046.00 ft (KB)

Total Depth: 4297.00 ft (KB) (TVD)

3035.00 ft (CF)

Hole Diameter: 7.88 inches Hole Condition: Poor

KB to GR/CF: 11.00 ft

**Serial #: 8522 Outside**

Press@RunDepth: 604.40 psig @ 4275.00 ft (KB)

Capacity: 8000.00 psig

Start Date: 2014.09.27

End Date: 2014.09.27

Last Calib.: 2014.09.27

Start Time: 14:39:05

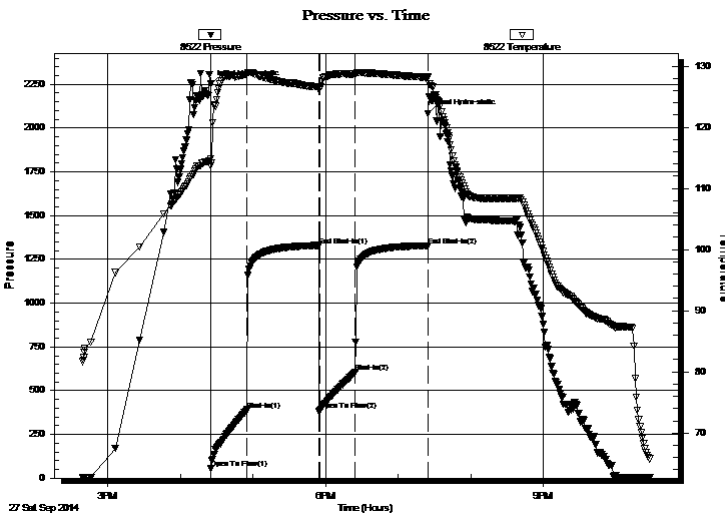
End Time: 22:27:44

Time On Btm: 2014.09.27 @ 16:24:45

Time Off Btm: 2014.09.27 @ 19:24:45

**TEST COMMENT:** 30: B.O.B. in 5 min.  
60: No Return.  
30: B. O. B in 8 min.  
90: No Return.

## PRESSURE SUMMARY



Time (Min.)	Pressure (psig)	Temp (deg F)	Annotation
0	2250.91	114.83	Initial Hydro-static
1	53.70	113.72	Open To Flow (1)
31	390.75	128.64	Shut-In(1)
90	1325.28	126.60	End Shut-In(1)
91	388.55	126.29	Open To Flow (2)
120	604.40	128.67	Shut-In(2)
180	1328.98	128.09	End Shut-In(2)
180	2081.96	128.20	Final Hydro-static

## Recovery

Length (ft)	Description	Volume (bbl)
189.00	mcw 20%m 80%w	0.93
1008.00	mcw 10%m 90%w	13.69
5.00	mcw with oil spots 10%m 89%w 1%o	0.07

\* Recovery from multiple tests

## Gas Rates

	Choke (inches)	Pressure (psig)	Gas Rate (Mcf/d)



# DRILL STEM TEST REPORT

Red Oak Energy Inc.

**35-11s-34w Logan,KS**

7701 E Kellogg Dr STE 710  
Wichita KS 67207

**Rohleder Trust #2-35**

ATTN: Pat Deenihan

Job Ticket: 57471

**DST#: 4**

Test Start: 2014.09.27 @ 14:39:00

## GENERAL INFORMATION:

Formation: **LKC J**

Deviated: No Whipstock: ft (KB)

Time Tool Opened: 16:25:00

Time Test Ended: 22:27:45

Test Type: Conventional Bottom Hole (Reset)

Tester: Justin Harris

Unit No: 69

**Interval: 4274.00 ft (KB) To 4297.00 ft (KB) (TVD)**

Reference Elevations: 3046.00 ft (KB)

Total Depth: 4297.00 ft (KB) (TVD)

3035.00 ft (CF)

Hole Diameter: 7.88 inches Hole Condition: Poor

KB to GR/CF: 11.00 ft

## Serial #: 8365

Press@RunDepth: psig @ ft (KB)

Capacity: 8000.00 psig

Start Date: 2014.09.27

End Date: 2014.09.27

Last Calib.: 2014.09.27

Start Time: 14:39:05

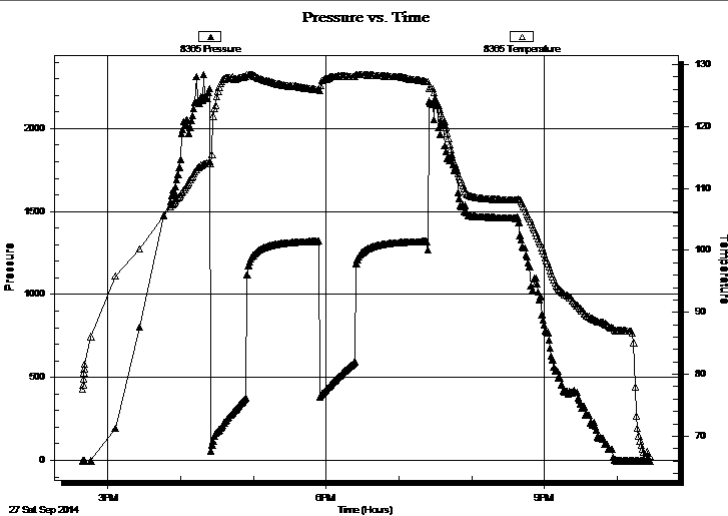
End Time: 22:27:14

Time On Btm:

Time Off Btm:

**TEST COMMENT:** 30: B.O.B. in 5 min.  
60: No Return.  
30: B. O. B in 8 min.  
90: No Return.

## PRESSURE SUMMARY



Time (Min.)	Pressure (psig)	Temp (deg F)	Annotation

## Recovery

Length (ft)	Description	Volume (bbl)
189.00	mcw 20%m 80%w	0.93
1008.00	mcw 10%m 90%w	13.69
5.00	mcw with oil spots 10%m 89%w 1%o	0.07

## Gas Rates

Choke (inches)	Pressure (psig)	Gas Rate (Mcf/d)

\* Recovery from multiple tests





**TRILOBITE  
TESTING, INC**

# DRILL STEM TEST REPORT

**TOOL DIAGRAM**

Red Oak Energy Inc.

**35-11s-34w Logan,KS**

7701 E Kellogg Dr STE 710  
Wichita KS 67207

**Rohleder Trust #2-35**

Job Ticket: 57471

**DST#: 4**

ATTN: Pat Deenihan

Test Start: 2014.09.27 @ 14:39:00

## Tool Information

Drill Pipe:	Length: 4038.00 ft	Diameter: 3.80 inches	Volume: 56.64 bbl	Tool Weight: 2500.00 lb
Heavy Wt. Pipe:	Length: 0.00 ft	Diameter: inches	Volume: 0.00 bbl	Weight set on Packer: 30000.00 lb
Drill Collar:	Length: 238.00 ft	Diameter: 2.25 inches	Volume: 1.17 bbl	Weight to Pull Loose: 75000.00 lb
			<u>Total Volume: 57.81 bbl</u>	Tool Chased 0.00 ft
Drill Pipe Above KB:	22.00 ft			String Weight: Initial 62000.00 lb
Depth to Top Packer:	4274.00 ft			Final 66000.00 lb
Depth to Bottom Packer:	ft			
Interval between Packers:	23.00 ft			
Tool Length:	43.00 ft			
Number of Packers:	2	Diameter: 6.75 inches		

Tool Comments:

## Tool Description

Tool Description	Length (ft)	Serial No.	Position	Depth (ft)	Accum. Lengths
Change Over Sub	1.00			4255.00	
Shut In Tool	5.00			4260.00	
Hydraulic tool	5.00			4265.00	
Packer	5.00			4270.00	20.00 Bottom Of Top Packer
Packer	4.00			4274.00	
Stubb	1.00			4275.00	
Recorder	0.00	8678	Inside	4275.00	
Recorder	0.00	8522	Outside	4275.00	
Perforations	19.00			4294.00	
Bullnose	3.00			4297.00	23.00 Bottom Packers & Anchor
<b>Total Tool Length:</b>	<b>43.00</b>				



**TRILOBITE  
TESTING, INC**

# DRILL STEM TEST REPORT

## FLUID SUMMARY

Red Oak Energy Inc.

**35-11s-34w Logan,KS**

7701 E Kellogg Dr STE 710  
Wichita KS 67207

**Rohleder Trust #2-35**

Job Ticket: 57471

**DST#: 4**

ATTN: Pat Deenihan

Test Start: 2014.09.27 @ 14:39:00

### Mud and Cushion Information

Mud Type: Gel Chem

Cushion Type:

Oil API:

0 deg API

Mud Weight: 9.00 lb/gal

Cushion Length:

ft

Water Salinity:

20000 ppm

Viscosity: 68.00 sec/qt

Cushion Volume:

bbbl

Water Loss: 6.79 in<sup>3</sup>

Gas Cushion Type:

Resistivity: ohm.m

Gas Cushion Pressure:

psig

Salinity: 2200.00 ppm

Filter Cake: 2.00 inches

### Recovery Information

Recovery Table

Length ft	Description	Volume bbl
189.00	mcw 20%m 80%w	0.929
1008.00	mcw 10%m 90%w	13.693
5.00	mcw with oil spots 10%m 89%w 1%o	0.070

Total Length: 1202.00 ft      Total Volume: 14.692 bbl

Num Fluid Samples: 0

Num Gas Bombs: 0

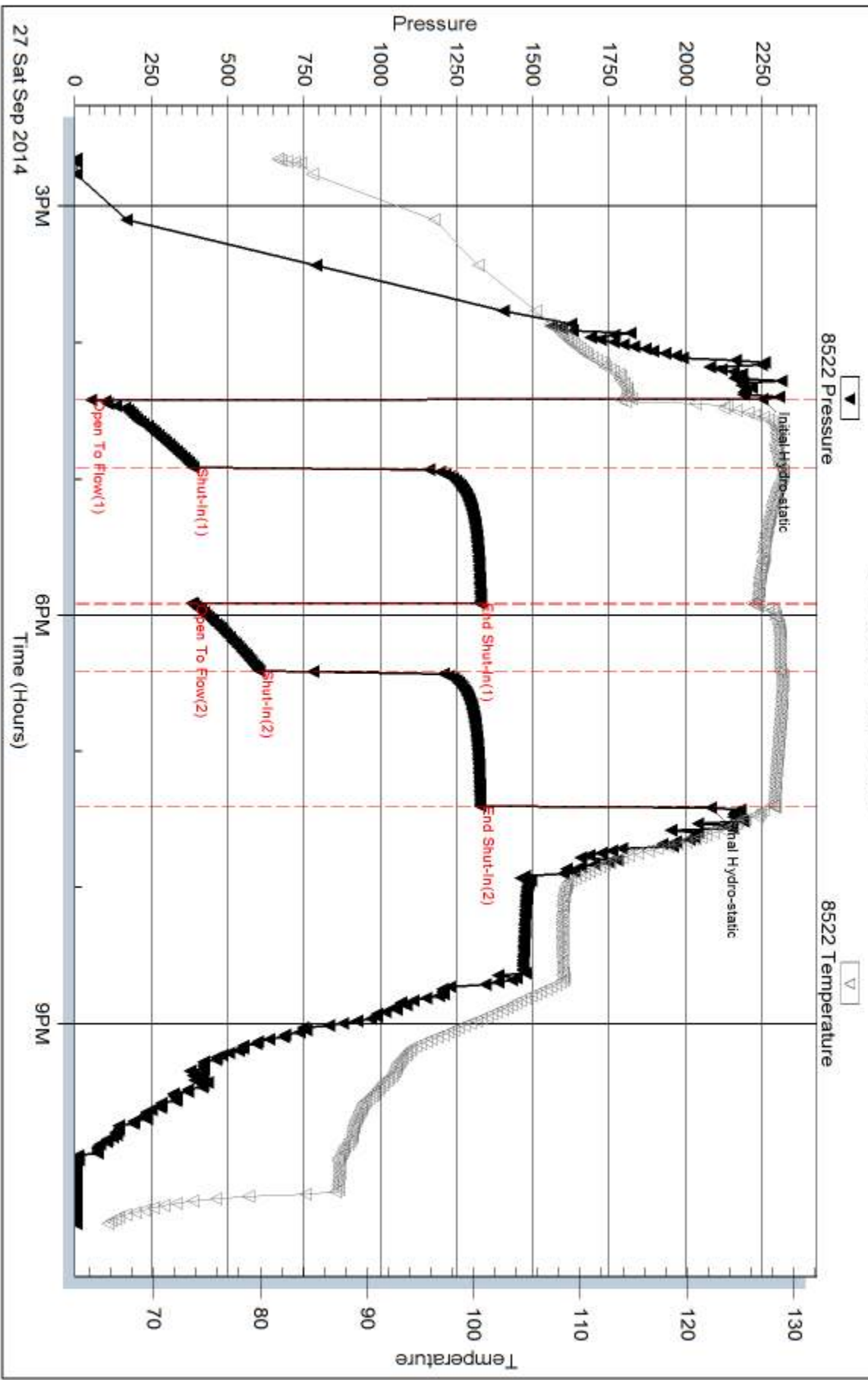
Serial #:

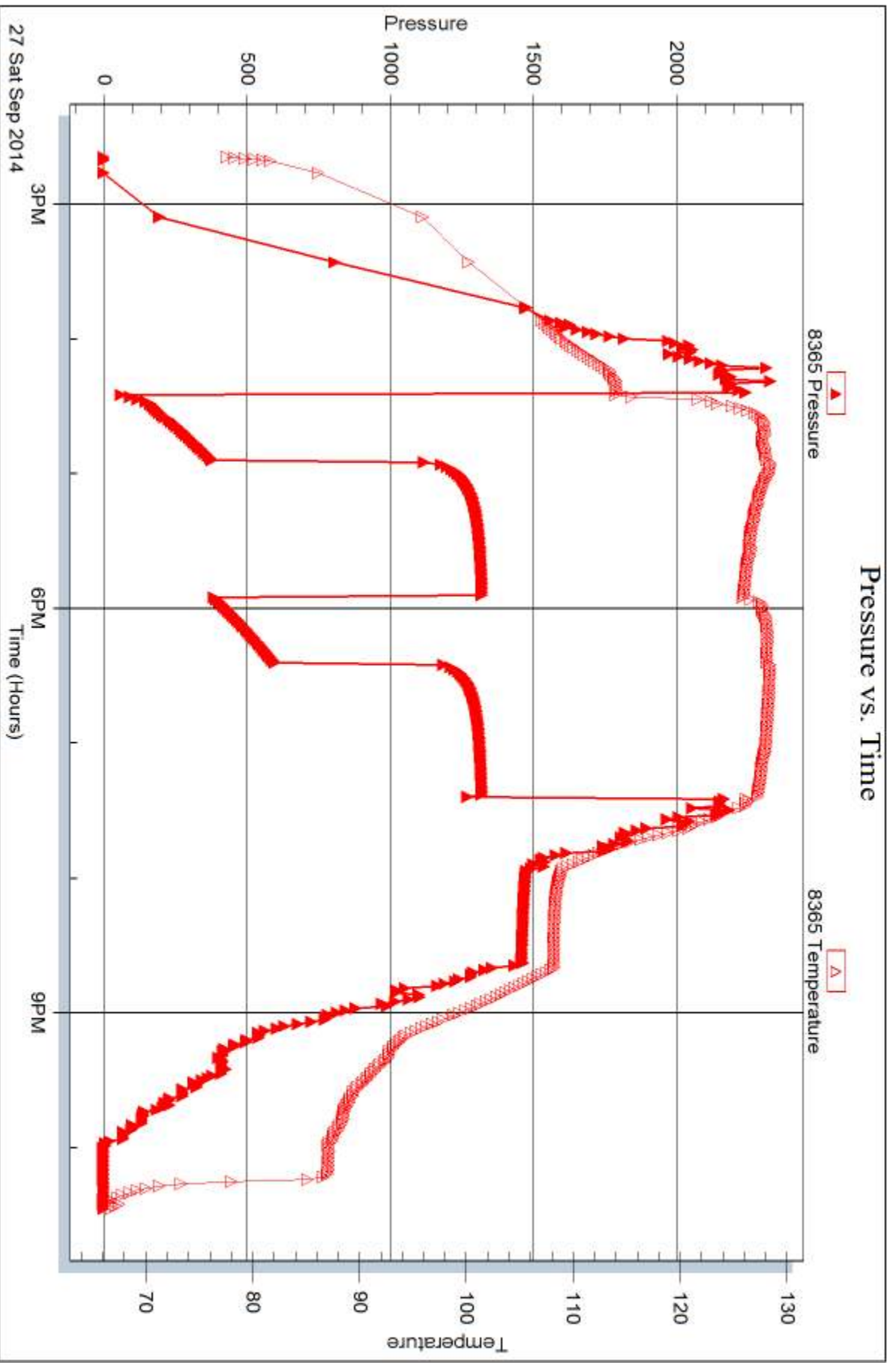
Laboratory Name:

Laboratory Location:

Recovery Comments: API RW .395 @ 60F Chrides 20000 ppm

### Pressure vs. Time







## DRILL STEM TEST REPORT

Prepared For: **Red Oak Energy Inc.**

7701 E Kellogg Dr STE 710  
Wichita KS 67207

ATTN: Pat Deenihan

### **Rohleder Trust #2-35**

### **35-11s-34w Logan,KS**

Start Date: 2014.09.29 @ 08:47:00

End Date: 2014.09.29 @ 16:03:15

Job Ticket #: 57438                      DST #: 5

Trilobite Testing, Inc  
1515 Commerce Parkway Hays, KS 67601  
ph: 785-625-4778 fax: 785-625-5620

Printed: 2014.10.03 @ 09:10:27



**TRILOBITE  
TESTING, INC**

# DRILL STEM TEST REPORT

Red Oak Energy Inc.

**35-11s-34w Logan,KS**

7701 E Kellogg Dr STE 710  
Wichita KS 67207

**Rohleder Trust #2-35**

Job Ticket: 57438

**DST#: 5**

ATTN: Pat Deenihan

Test Start: 2014.09.29 @ 08:47:00

## GENERAL INFORMATION:

Formation: **Johnson**

Deviated: No Whipstock: ft (KB)

Time Tool Opened: 10:42:45

Time Test Ended: 16:03:15

Test Type: Conventional Bottom Hole (Reset)

Tester: Bradley Walter

Unit No: 69

**Interval: 4601.00 ft (KB) To 4636.00 ft (KB) (TVD)**

Reference Elevations: 3046.00 ft (KB)

Total Depth: 4636.00 ft (KB) (TVD)

3035.00 ft (CF)

Hole Diameter: 7.88 inches Hole Condition: Good

KB to GR/CF: 11.00 ft

**Serial #: 8365 Inside**

Press@RunDepth: 77.77 psig @ 4602.00 ft (KB)

Capacity: 8000.00 psig

Start Date: 2014.09.29

End Date:

2014.09.29

Last Calib.:

2014.09.29

Start Time: 08:47:05

End Time:

16:03:14

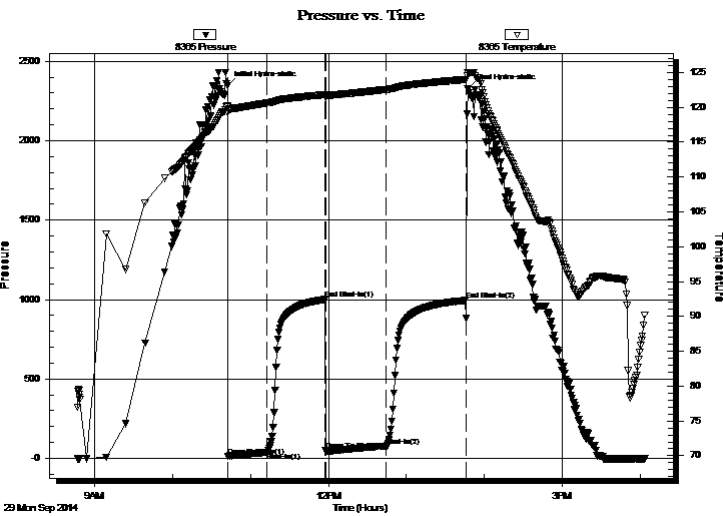
Time On Btm:

2014.09.29 @ 10:42:30

Time Off Btm:

2014.09.29 @ 13:47:15

TEST COMMENT: IF: 2" blow.  
IS: No return.  
FF: 2" blow.  
FS: No return.



## PRESSURE SUMMARY

Time (Min.)	Pressure (psig)	Temp (deg F)	Annotation
0	2349.57	120.19	Initial Hydro-static
1	13.02	119.27	Open To Flow (1)
31	39.02	120.62	Shut-In(1)
75	1001.33	121.83	End Shut-In(1)
76	51.32	121.47	Open To Flow (2)
122	77.77	122.56	Shut-In(2)
183	994.38	123.99	End Shut-In(2)
185	2329.00	125.02	Final Hydro-static

## Recovery

Length (ft)	Description	Volume (bbl)
50.00	gocm 20g 30o 50m	0.25
170.00	go 25g 75o	0.84
0.00	60' GIP	0.00

\* Recovery from multiple tests

## Gas Rates

	Choke (inches)	Pressure (psig)	Gas Rate (Mcf/d)



# DRILL STEM TEST REPORT

Red Oak Energy Inc.  
 7701 E Kellogg Dr STE 710  
 Wichita KS 67207  
 ATTN: Pat Deenihan

**35-11s-34w Logan, KS**  
**Rohleder Trust #2-35**  
 Job Ticket: 57438 **DST#: 5**  
 Test Start: 2014.09.29 @ 08:47:00

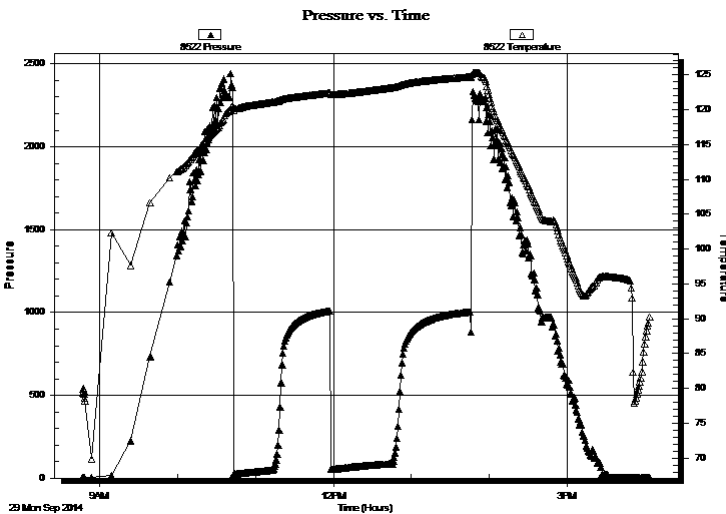
## GENERAL INFORMATION:

Formation: **Johnson**  
 Deviated: No Whipstock: ft (KB)  
 Time Tool Opened: 10:42:45  
 Time Test Ended: 16:03:15  
**Interval: 4601.00 ft (KB) To 4636.00 ft (KB) (TVD)**  
 Total Depth: 4636.00 ft (KB) (TVD)  
 Hole Diameter: 7.88 inches Hole Condition: Good  
 Test Type: Conventional Bottom Hole (Reset)  
 Tester: Bradley Walter  
 Unit No: 69  
 Reference Elevations: 3046.00 ft (KB)  
 3035.00 ft (CF)  
 KB to GR/CF: 11.00 ft

**Serial #: 8522 Outside**  
 Press@RunDepth: psig @ 4602.00 ft (KB) Capacity: 8000.00 psig  
 Start Date: 2014.09.29 End Date: 2014.09.29 Last Calib.: 2014.09.29  
 Start Time: 08:47:05 End Time: 16:03:14 Time On Btm:  
 Time Off Btm:

TEST COMMENT: IF: 2" blow.  
 IS: No return.  
 FF: 2" blow.  
 FS: No return.

## PRESSURE SUMMARY



Time (Min.)	Pressure (psig)	Temp (deg F)	Annotation

## Recovery

Length (ft)	Description	Volume (bbl)
50.00	gocm 20g 30o 50m	0.25
170.00	go 25g 75o	0.84
0.00	60' GIP	0.00

\* Recovery from multiple tests

## Gas Rates

Choke (inches)	Pressure (psig)	Gas Rate (Mcf/d)



**TRILOBITE  
TESTING, INC**

# DRILL STEM TEST REPORT

**TOOL DIAGRAM**

Red Oak Energy Inc.

**35-11s-34w Logan,KS**

7701 E Kellogg Dr STE 710  
Wichita KS 67207

**Rohleder Trust #2-35**

Job Ticket: 57438

**DST#: 5**

ATTN: Pat Deenihan

Test Start: 2014.09.29 @ 08:47:00

## Tool Information

Drill Pipe:	Length: 4347.00 ft	Diameter: 3.80 inches	Volume: 60.98 bbl	Tool Weight:	2500.00 lb
Heavy Wt. Pipe:	Length: 0.00 ft	Diameter: inches	Volume: 0.00 bbl	Weight set on Packer:	25000.00 lb
Drill Collar:	Length: 238.00 ft	Diameter: 2.25 inches	Volume: 1.17 bbl	Weight to Pull Loose:	80000.00 lb
			<u>Total Volume: 62.15 bbl</u>	Tool Chased	0.00 ft
Drill Pipe Above KB:	4.00 ft			String Weight: Initial	68000.00 lb
Depth to Top Packer:	4601.00 ft			Final	68000.00 lb
Depth to Bottom Packer:	ft				
Interval between Packers:	35.00 ft				
Tool Length:	55.00 ft				
Number of Packers:	2	Diameter: 6.75 inches			

Tool Comments:

## Tool Description

Tool Description	Length (ft)	Serial No.	Position	Depth (ft)	Accum. Lengths
Change Over Sub	1.00			4582.00	
Shut In Tool	5.00			4587.00	
Hydraulic tool	5.00			4592.00	
Packer	5.00			4597.00	20.00 Bottom Of Top Packer
Packer	4.00			4601.00	
Stubb	1.00			4602.00	
Recorder	0.00	8365	Inside	4602.00	
Recorder	0.00	8522	Outside	4602.00	
Perforations	31.00			4633.00	
Bullnose	3.00			4636.00	35.00 Bottom Packers & Anchor
<b>Total Tool Length:</b>	<b>55.00</b>				





**TRILOBITE  
TESTING, INC**

# DRILL STEM TEST REPORT

**FLUID SUMMARY**

Red Oak Energy Inc.

**35-11s-34w Logan,KS**

7701 E Kellogg Dr STE 710  
Wichita KS 67207

**Rohleder Trust #2-35**

Job Ticket: 57438

**DST#: 5**

ATTN: Pat Deenihan

Test Start: 2014.09.29 @ 08:47:00

## Mud and Cushion Information

Mud Type: Gel Chem  
Mud Weight: 9.00 lb/gal  
Viscosity: 48.00 sec/qt  
Water Loss: 7.99 in<sup>3</sup>  
Resistivity: ohm.m  
Salinity: 2000.00 ppm  
Filter Cake: 2.00 inches

Cushion Type:  
Cushion Length: ft  
Cushion Volume: bbl  
Gas Cushion Type:  
Gas Cushion Pressure: psig

Oil API: 23 deg API  
Water Salinity: 0 ppm

## Recovery Information

Recovery Table

Length ft	Description	Volume bbl
50.00	gocm 20g 30o 50m	0.246
170.00	go 25g 75o	0.836
0.00	60' GIP	0.000

Total Length: 220.00 ft      Total Volume: 1.082 bbl

Num Fluid Samples: 0

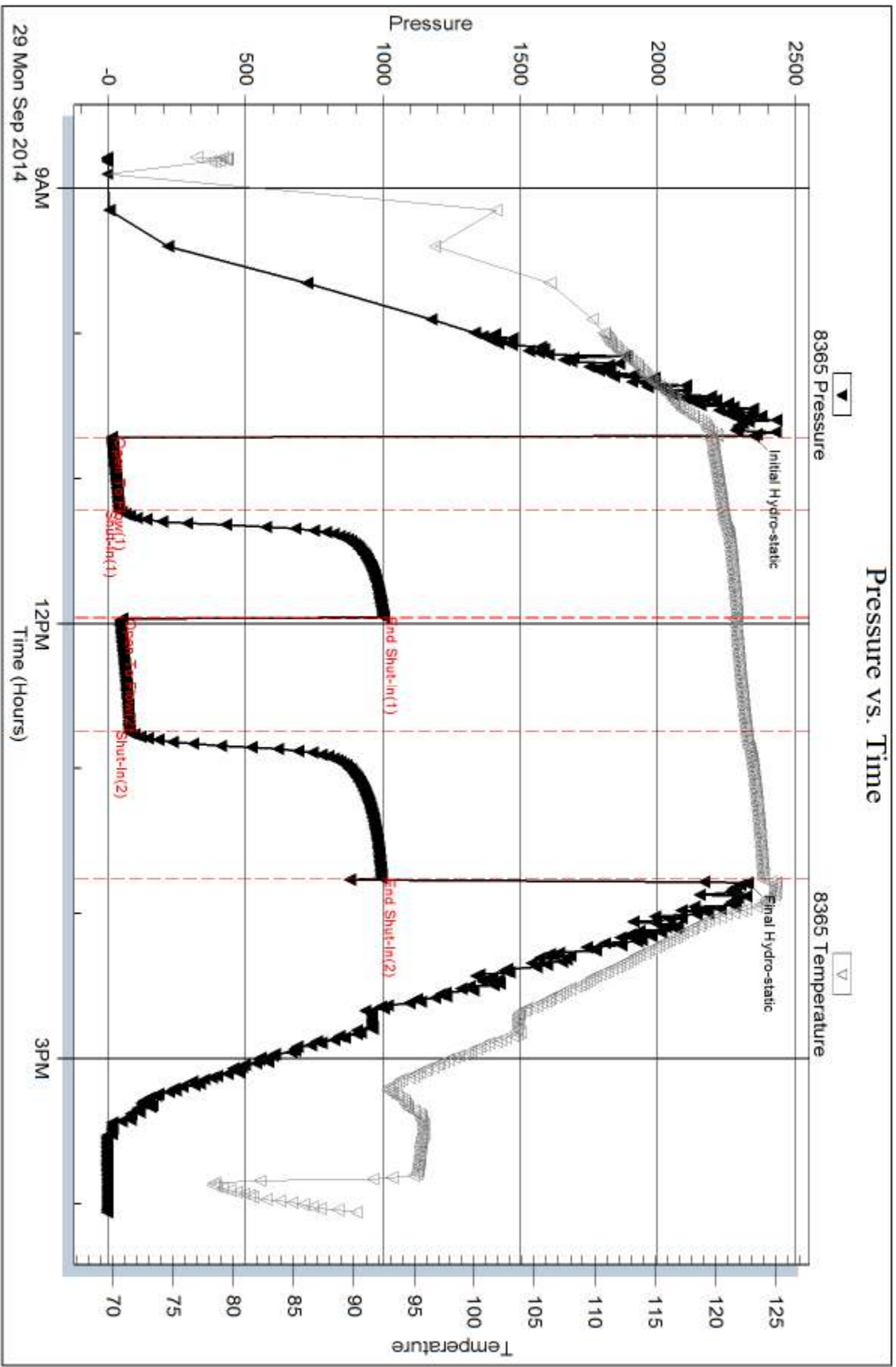
Num Gas Bombs: 0

Serial #:

Laboratory Name:

Laboratory Location:

Recovery Comments:

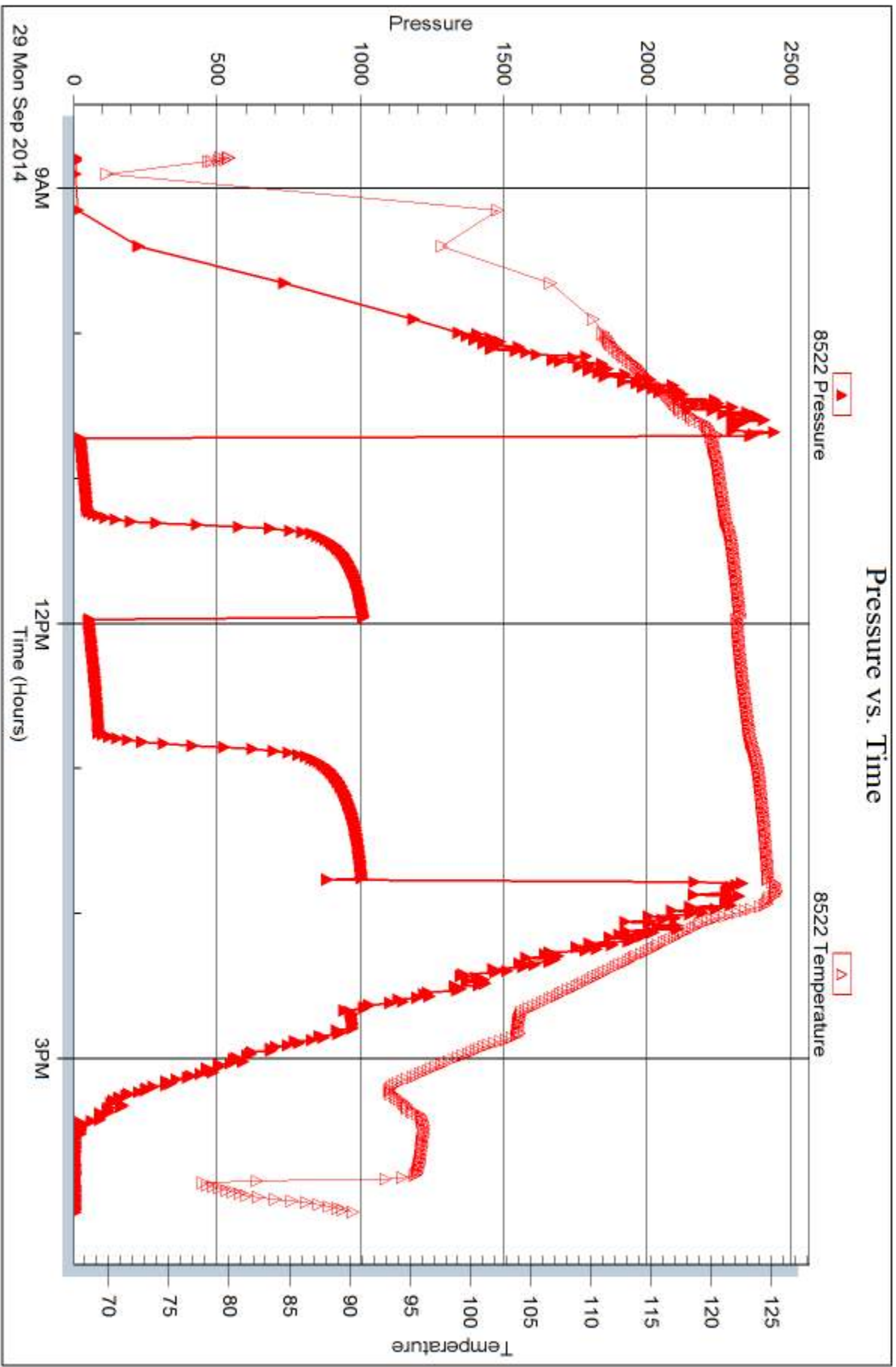


Serial #: 8522

Outside Red Oak Energy Inc.

Rohleder Trust #2-35

DST Test Number: 5



Trilobite Testing, Inc

Ref. No: 57438

Printed: 2014, 10:03 @ 09:10:28



## DRILL STEM TEST REPORT

Prepared For: **Red Oak Energy Inc.**

7701 E Kellogg Dr STE 710  
Wichita KS 67207

ATTN: Pat Deenihan

### **Rohleder Trust #2-35**

### **35-11s-34w Logan,KS**

Start Date: 2014.09.30 @ 00:45:00

End Date: 2014.09.30 @ 09:37:45

Job Ticket #: 57439                      DST #: 6

Trilobite Testing, Inc  
1515 Commerce Parkway Hays, KS 67601  
ph: 785-625-4778 fax: 785-625-5620

Printed: 2014.10.03 @ 09:09:57



**TRILOBITE TESTING, INC.**

# DRILL STEM TEST REPORT

Red Oak Energy Inc.  
 7701 E Kellogg Dr STE 710  
 Wichita KS 67207  
 ATTN: Pat Deenihan

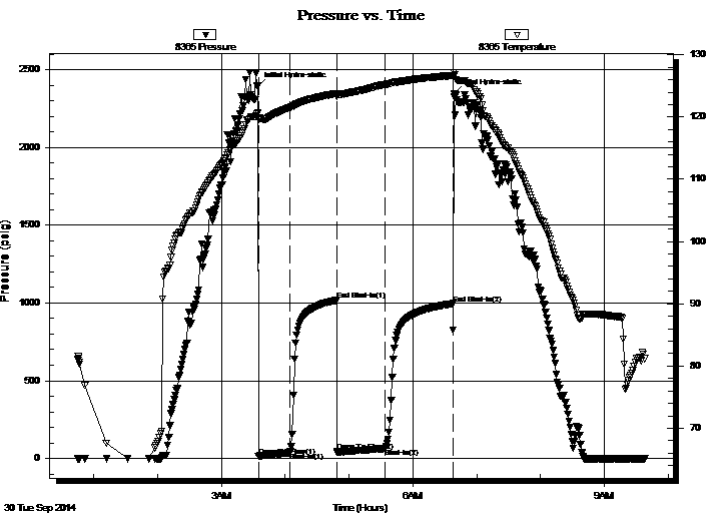
**35-11s-34w Logan,KS**  
**Rohleder Trust #2-35**  
 Job Ticket: 57439 **DST#: 6**  
 Test Start: 2014.09.30 @ 00:45:00

## GENERAL INFORMATION:

Formation: **Morrow**  
 Deviated: No Whipstock: ft (KB)  
 Time Tool Opened: 03:34:45  
 Time Test Ended: 09:37:45  
 Interval: **4632.00 ft (KB) To 4650.00 ft (KB) (TVD)**  
 Total Depth: 4130.00 ft (KB) (TVD)  
 Hole Diameter: 7.88 inches Hole Condition: Good  
 Test Type: Conventional Bottom Hole (Reset)  
 Tester: Bradley Walter  
 Unit No: 69  
 Reference Elevations: 3046.00 ft (KB)  
 3035.00 ft (CF)  
 KB to GR/CF: 11.00 ft

**Serial #: 8365 Inside**  
 Press@RunDepth: 63.84 psig @ 4633.00 ft (KB) Capacity: 8000.00 psig  
 Start Date: 2014.09.30 End Date: 2014.09.30 Last Calib.: 2014.09.30  
 Start Time: 00:45:05 End Time: 09:37:45 Time On Btm: 2014.09.30 @ 03:34:30  
 Time Off Btm: 2014.09.30 @ 06:39:00

TEST COMMENT: IF: 1" blow.  
 IS: No return.  
 FF: 1/2" blow.  
 FS: No return.



## PRESSURE SUMMARY

Time (Min.)	Pressure (psig)	Temp (deg F)	Annotation
0	2392.37	120.61	Initial Hydro-static
1	14.21	119.53	Open To Flow (1)
30	35.85	121.51	Shut-In(1)
74	1017.30	123.79	End Shut-In(1)
74	44.52	123.24	Open To Flow (2)
120	63.84	125.22	Shut-In(2)
183	995.46	126.68	End Shut-In(2)
185	2345.24	127.17	Final Hydro-static

## Recovery

Length (ft)	Description	Volume (bbl)
50.00	gocm 20g 25o 45m	0.25
80.00	gmco 40g 10m 50o	0.39

\* Recovery from multiple tests

## Gas Rates

Choke (inches)	Pressure (psig)	Gas Rate (Mcf/d)





**TRILOBITE  
TESTING, INC**

# DRILL STEM TEST REPORT

**TOOL DIAGRAM**

Red Oak Energy Inc.

**35-11s-34w Logan,KS**

7701 E Kellogg Dr STE 710  
Wichita KS 67207

**Rohleder Trust #2-35**

Job Ticket: 57439

**DST#: 6**

ATTN: Pat Deenihan

Test Start: 2014.09.30 @ 00:45:00

## Tool Information

Drill Pipe:	Length: 4378.00 ft	Diameter: 3.80 inches	Volume: 61.41 bbl	Tool Weight: 2500.00 lb
Heavy Wt. Pipe:	Length: 0.00 ft	Diameter: inches	Volume: 0.00 bbl	Weight set on Packer: 25000.00 lb
Drill Collar:	Length: 238.00 ft	Diameter: 2.25 inches	Volume: 1.17 bbl	Weight to Pull Loose: 85000.00 lb
			<u>Total Volume: 62.58 bbl</u>	Tool Chased 0.00 ft
Drill Pipe Above KB:	4.00 ft			String Weight: Initial 67000.00 lb
Depth to Top Packer:	4632.00 ft			Final 67000.00 lb
Depth to Bottom Packer:	ft			
Interval between Packers:	18.00 ft			
Tool Length:	38.00 ft			
Number of Packers:	2	Diameter: 6.75 inches		

Tool Comments:

## Tool Description

Tool Description	Length (ft)	Serial No.	Position	Depth (ft)	Accum. Lengths
Change Over Sub	1.00			4613.00	
Shut In Tool	5.00			4618.00	
Hydraulic tool	5.00			4623.00	
Packer	5.00			4628.00	20.00 Bottom Of Top Packer
Packer	4.00			4632.00	
Stubb	1.00			4633.00	
Recorder	0.00	8365	Inside	4633.00	
Recorder	0.00	8522	Outside	4633.00	
Perforations	14.00			4647.00	
Bullnose	3.00			4650.00	18.00 Bottom Packers & Anchor
<b>Total Tool Length:</b>	<b>38.00</b>				



**TRILOBITE  
TESTING, INC**

# DRILL STEM TEST REPORT

**FLUID SUMMARY**

Red Oak Energy Inc.

**35-11s-34w Logan,KS**

7701 E Kellogg Dr STE 710  
Wichita KS 67207

**Rohleder Trust #2-35**

Job Ticket: 57439

**DST#: 6**

ATTN: Pat Deenihan

Test Start: 2014.09.30 @ 00:45:00

## Mud and Cushion Information

Mud Type: Gel Chem

Cushion Type:

Oil API:

19 deg API

Mud Weight: 9.00 lb/gal

Cushion Length:

ft

Water Salinity:

0 ppm

Viscosity: 57.00 sec/qt

Cushion Volume:

bbbl

Water Loss: 7.99 in<sup>3</sup>

Gas Cushion Type:

Resistivity: ohm.m

Gas Cushion Pressure:

psig

Salinity: 2000.00 ppm

Filter Cake: 2.00 inches

## Recovery Information

Recovery Table

Length ft	Description	Volume bbl
50.00	gocm 20g 25o 45m	0.246
80.00	gmco 40g 10m 50o	0.393

Total Length: 130.00 ft

Total Volume: 0.639 bbl

Num Fluid Samples: 0

Num Gas Bombs: 0

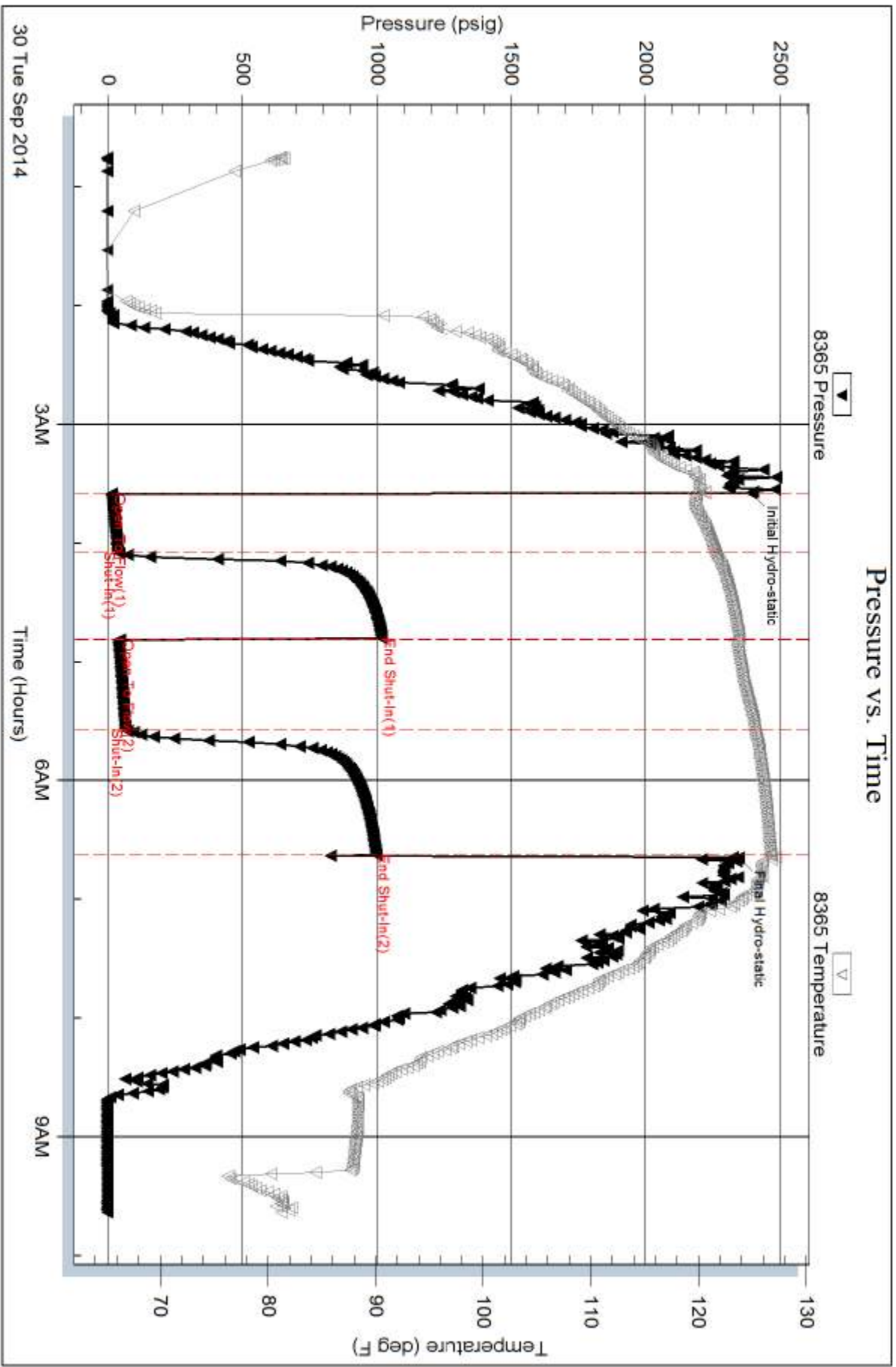
Serial #:

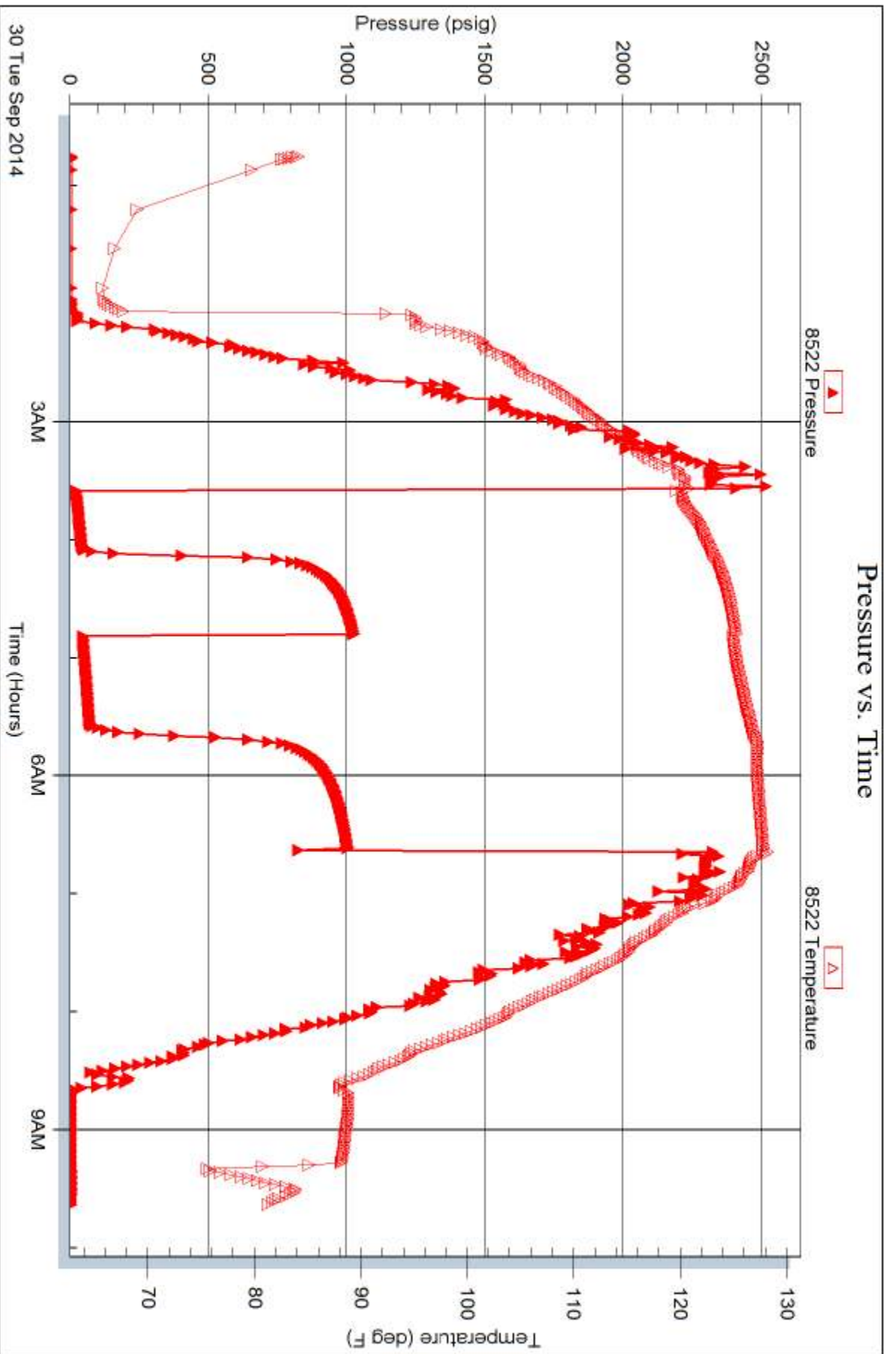
Laboratory Name:

Laboratory Location:

Recovery Comments:









# TRILOBITE TESTING INC.

1515 Commerce Parkway • Hays, Kansas 67601

## Test Ticket

NO. 57468

4/10

Well Name & No. Rohleder Trust 2-35 Test No. 1 Date 9-25-14  
 Company Red Oak Energy, Inc Elevation 3044 KB 3035 GL  
 Address 1701 E Kellogg Dr STE 710 Wichita ks, 67207  
 Co. Rep / Geo. Sean Deenihan Rig Murfin 22  
 Location: Sec. 35 Twp. 11S Rge. 32W Co. logan State ks

Interval Tested 4102 4130 Zone Tested lensing B  
 Anchor Length 28 Drill Pipe Run 3849 Mud Wt. 9.1  
 Top Packer Depth 4098 Drill Collars Run 238 Vis 43  
 Bottom Packer Depth 4102 Wt. Pipe Run 0 WL 6.0  
 Total Depth 4130 Chlorides 1800 ppm System LCM 12.0

Blow Description 30 couple Bubble Red  
15 No Return  
15 No Blow  
15 No Return

Rec	Feet of	%gas	%oil	%water	%mud
<u>10</u>	<u>mud</u>			<u>100</u>	
Rec	Feet of	%gas	%oil	%water	%mud
Rec	Feet of	%gas	%oil	%water	%mud
Rec	Feet of	%gas	%oil	%water	%mud
Rec	Feet of	%gas	%oil	%water	%mud

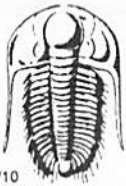
Rec Total 10 BHT 119 Gravity — API RW — @ — °F Chlorides — ppm

(A) Initial Hydrostatic 2108  Test 1250 T-On Location 18:03  
 (B) First Initial Flow 23  Jars 250 T-Started 18:52  
 (C) First Final Flow 31  Safety Joint \_\_\_\_\_ T-Open 20:56  
 (D) Initial Shut-In 1120  Circ Sub N/C T-Pulled 22:11  
 (E) Second Initial Flow 33  Hourly Standby \_\_\_\_\_ T-Out 00:05  
 (F) Second Final Flow 44  Mileage 90 RT 139.50 Comments \_\_\_\_\_  
 (G) Final Shut-In 1207  Sampler \_\_\_\_\_  
 (H) Final Hydrostatic 1972  Straddle \_\_\_\_\_  Ruined Shale Packer \_\_\_\_\_

Initial Open 30  Shale Packer \_\_\_\_\_  Ruined Packer \_\_\_\_\_  
 Initial Shut-In 15  Extra Packer \_\_\_\_\_  Extra Copies \_\_\_\_\_  
 Final Flow 15  Extra Recorder \_\_\_\_\_ Sub Total 0  
 Final Shut-In 15  Day Standby \_\_\_\_\_ Total 1639.50  
 Accessibility \_\_\_\_\_ MP/DST Disc't \_\_\_\_\_  
 Sub Total 1639.50

Approved By \_\_\_\_\_ Our Representative [Signature]  
 Trilobite Testing Inc. shall not be liable for damaged of any kind of the property or personnel of the one for whom a test is made, or for any loss suffered or sustained, directly or indirectly, through the use of its equipment, or its statements or opinion concerning the results of any test, tools lost or damaged in the hole shall be paid for at cost by the party for whom the test is made.





# TRILOBITE TESTING INC.

1515 Commerce Parkway • Hays, Kansas 67601

## Test Ticket

NO. 57469

4/10

Well Name & No. Rohleder Trust 2-35 Test No. 2 Date 9-26-14  
 Company Red Oak Energy Inc Elevation 3046 KB 3035 GL  
 Address 7101 E Kellogg Dr STE 710 Wichita ks 67207  
 Co. Rep / Geo. Sean Deenihan Rig Murfin #22  
 Location: Sec. 35 Twp. 11S Rge. 34W Co. logan State KS

Interval Tested 4218 4244 Zone Tested Lansing H  
 Anchor Length 28 Drill Pipe Run 3975 Mud Wt. 9.1  
 Top Packer Depth 4214 Drill Collars Run 238 Vis 55  
 Bottom Packer Depth 4218 Wt. Pipe Run Ø WL 6.4  
 Total Depth 4244 Chlorides 1700 ppm System LCM 9

Blow Description 30 weak surface Blow Died in 4 min  
15 No Return  
15 No Blow.  
15 No Return.

Rec	Feet of	%gas	%oil	%water	%mud
<u>10</u>	<u>mud oil spots</u>	<u>1</u>		<u>99</u>	
Rec	Feet of	%gas	%oil	%water	%mud
Rec	Feet of	%gas	%oil	%water	%mud
Rec	Feet of	%gas	%oil	%water	%mud
Rec	Feet of	%gas	%oil	%water	%mud

Rec Total 10 BHT 119 Gravity = API RW - @ - °F Chlorides - ppm

(A) Initial Hydrostatic 2186  Test 1250 T-On Location 11:25  
 (B) First Initial Flow 24  Jars 250 T-Started 11:29  
 (C) First Final Flow 30  Safety Joint \_\_\_\_\_ T-Open 13:17  
 (D) Initial Shut-In 40  Circ Sub N/C T-Pulled 14:32  
 (E) Second Initial Flow 25  Hourly Standby \_\_\_\_\_ T-Out 16:23  
 (F) Second Final Flow 31  Mileage 90 RT 139.50 Comments \_\_\_\_\_  
 (G) Final Shut-In 42  Sampler \_\_\_\_\_  
 (H) Final Hydrostatic 2072  Straddle \_\_\_\_\_  Ruined Shale Packer \_\_\_\_\_  
 Shale Packer \_\_\_\_\_  Ruined Packer \_\_\_\_\_  
 Extra Packer \_\_\_\_\_  Extra Copies \_\_\_\_\_

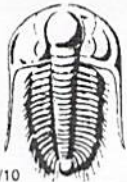
Initial Open 30  
 Initial Shut-In 15  
 Final Flow 15  
 Final Shut-In 15

Extra Recorder \_\_\_\_\_  
 Day Standby \_\_\_\_\_  
 Accessibility \_\_\_\_\_

Sub Total 1639.50  
 Total 1639.50  
 MP/DST Disc't \_\_\_\_\_

Approved By \_\_\_\_\_ Our Representative [Signature]

Trilobite Testing Inc. shall not be liable for damaged of any kind of the property or personnel of the one for whom a test is made, or for any loss suffered or sustained, directly or indirectly, through the use of its equipment, or its statements or opinion concerning the results of any test, tools lost or damaged in the hole shall be paid for at cost by the party for whom the test is made.



# TRILOBITE TESTING INC.

1515 Commerce Parkway • Hays, Kansas 67601

## Test Ticket

NO. 57470

4/10

Well Name & No. Rohleder Trust 2-35 Test No. 3 Date 9-27-14  
 Company Red Oak Energy Inc Elevation 3046 KB 3035 GL  
 Address 7701 E Kellogg Dr STE 710 Wichita KS 67207  
 Co. Rep / Geo. Pat Deenihan Rig Murfin #22  
 Location: Sec. 35 Twp. 11S Rge. 34W Co. Logan State KS

Interval Tested 4245 4274 Zone Tested Lansing I  
 Anchor Length 29 Drill Pipe Run 4007 Mud Wt. 9.1  
 Top Packer Depth 4241 Drill Collars Run 238 Vis SS  
 Bottom Packer Depth 4245 Wt. Pipe Run Ø WL 6.4  
 Total Depth 4274 Chlorides 1700 ppm System LCM 9

Blow Description 30 weak Blow Died in 5 min  
30 No Return  
30 No Blow  
30 No Return

Rec	Feet of	%gas	%oil	%water	%mud
<u>5</u>	<u>mud</u>				<u>100</u>
Rec	Feet of	%gas	%oil	%water	%mud
Rec	Feet of	%gas	%oil	%water	%mud
Rec	Feet of	%gas	%oil	%water	%mud
Rec	Feet of	%gas	%oil	%water	%mud

Rec Total 5 BHT 117 Gravity — API RW — @ — °F Chlorides — ppm

(A) Initial Hydrostatic <u>2224</u>	<input checked="" type="checkbox"/> Test <u>1250</u>	T-On Location <u>00:58</u>
(B) First Initial Flow <u>18</u>	<input type="checkbox"/> Jars	T-Started <u>1:38</u>
(C) First Final Flow <u>21</u>	<input type="checkbox"/> Safety Joint	T-Open <u>3:34</u>
(D) Initial Shut-In <u>27</u>	<input checked="" type="checkbox"/> Circ Sub <u>N/C</u>	T-Pulled <u>5:34</u>
(E) Second Initial Flow <u>22</u>	<input type="checkbox"/> Hourly Standby	T-Out <u>7:29</u>
(F) Second Final Flow <u>22</u>	<input checked="" type="checkbox"/> Mileage <u>90 RT</u> 139.50	Comments
(G) Final Shut-In <u>23</u>	<input type="checkbox"/> Sampler	
(H) Final Hydrostatic <u>2157</u>	<input type="checkbox"/> Straddle	<input type="checkbox"/> Ruined Shale Packer
Initial Open <u>30</u>	<input checked="" type="checkbox"/> Shale Packer <u>250</u>	<input type="checkbox"/> Ruined Packer
Initial Shut-In <u>30</u>	<input type="checkbox"/> Extra Packer	<input type="checkbox"/> Extra Copies
Final Flow <u>30</u>	<input type="checkbox"/> Extra Recorder	Sub Total <u>0</u>
Final Shut-In <u>30</u>	<input type="checkbox"/> Day Standby	Total <u>1639.50</u>
	<input type="checkbox"/> Accessibility	MP/DST Disc't
	Sub Total <u>1639.50</u>	

Approved By

*Pat Deenihan*

Our Representative

*Pat Deenihan*

Trilobite Testing Inc. shall not be liable for damaged of any kind of the property or personnel of the one for whom a test is made, or for any loss suffered or sustained, directly or indirectly, through the use of its equipment, or its statements or opinion concerning the results of any test, tools lost or damaged in the hole shall be paid for at cost by the party for whom the test is made.





# TRILOBITE TESTING INC.

1515 Commerce Parkway • Hays, Kansas 67601

## Test Ticket

NO. 57471

4/10

Well Name & No. Rohleder test 2-35 Test No. 4 Date 9-27-14  
 Company Red Oak Energy Inc Elevation 3046 KB 3035 GL  
 Address 7901 E Kellogg Dr STE 710 Wichita KS 67207  
 Co. Rep / Geo. PgT Deenihan Rig Morfin 22  
 Location: Sec. 35 Twp. 11S Rge. 34W Co. logan State KS

Interval Tested 4274 - 4297 Zone Tested knasing J  
 Anchor Length 23 Drill Pipe Run 4038 Mud Wt. 9.3  
 Top Packer Depth 4270 Drill Collars Run 238 Vis 68  
 Bottom Packer Depth 4274 Wt. Pipe Run 8 WL 6.8  
 Total Depth 4297 Chlorides 2200 ppm System LCM 10

Blow Description 30 B.O.B in 5 min  
60 No Return  
30 B.O.B in 8 min  
60 No Return

Rec	Feet of	%gas	%oil	%water	%mud
<u>55</u>	<u>new oil spot</u>		<u>1</u>	<u>89</u>	<u>10</u>
<u>1006</u>	<u>mcw</u>			<u>90</u>	<u>10</u>
<u>1469</u>	<u>mcw</u>			<u>80</u>	<u>20</u>

Rec Total 1202 BHT 128 Gravity - API RW .395@ 60° F Chlorides 20000 ppm  
 (A) Initial Hydrostatic 7251  Test 1250 T-On Location 1439  
 (B) First Initial Flow 54  Jars \_\_\_\_\_ T-Started 1510  
 (C) First Final Flow 391  Safety Joint \_\_\_\_\_ T-Open 16:55  
 (D) Initial Shut-In 1325  Circ Sub N/C T-Pulled 19:55  
 (E) Second Initial Flow 399  Hourly Standby \_\_\_\_\_ T-Out 22:27  
 (F) Second Final Flow 404  Mileage 90RT 139.50 Comments \_\_\_\_\_  
 (G) Final Shut-In 1329  Sampler \_\_\_\_\_  
 (H) Final Hydrostatic 2082  Straddle \_\_\_\_\_  
 Shale Packer 250  Ruined Shale Packer \_\_\_\_\_  
 Extra Packer \_\_\_\_\_  Ruined Packer \_\_\_\_\_  
 Extra Recorder \_\_\_\_\_  Extra Copies \_\_\_\_\_  
 Initial Open 30  Day Standby \_\_\_\_\_ Sub Total 0  
 Initial Shut-In 60  Accessibility \_\_\_\_\_ Total 1639.50  
 Final Flow 30 Sub Total 1639.50 MP/DST Disc't \_\_\_\_\_  
 Final Shut-In 60

Approved By \_\_\_\_\_

Our Representative

Trilobite Testing Inc. shall not be liable for damaged of any kind of the property or personnel of the one for whom a test is made, or for any loss suffered or sustained, directly or indirectly, through the use of its equipment, or its statements or opinion concerning the results of any test, tools lost or damaged in the hole shall be paid for at cost by the party for whom the test is made.



# TRILOBITE TESTING INC.

1515 Commerce Parkway • Hays, Kansas 67601

## Test Ticket

NO. 57438

Well Name & No. Rohleder Frust 2-35 Test No. 5 Date 9/29/14  
 Company Red Oak Energy, Inc Elevation 3046 KB 3035 GL  
 Address 7701 E Kellogg Dr STE 710  
 Co. Rep / Geo. Pat Deenihan Rig MudAm 22  
 Location: Sec. 35 Twp. 11 Rge. 34 Co. Logan State KS

Interval Tested 4601 4636 Zone Tested Johnson  
 Anchor Length 35 Drill Pipe Run 4349 Mud Wt. 9.2  
 Top Packer Depth 4596 Drill Collars Run 238 Vis 48  
 Bottom Packer Depth 4601 Wt. Pipe Run 0 WL 8.0  
 Total Depth 4636 Chlorides 2,000 ppm System LCM C#

Blow Description IF: 2" blow.  
ISF: No return  
FF: 2" blow.  
FSI: No return.

Rec	Feet of	%gas	%oil	%water	%mud
<u>170</u>	<u>60</u>	<u>25</u>	<u>75</u>		
<u>50</u>	<u>600cm</u>	<u>20</u>	<u>30</u>		<u>50</u>
	<u>60' GTP</u>				

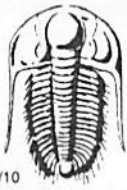
Rec Total 220 BHT 124 Gravity 23 API RW - @ - °F Chlorides - ppm

(A) Initial Hydrostatic <u>2350</u>	<input checked="" type="checkbox"/> Test <u>1250</u>	T-On Location <u>820</u>
(B) First Initial Flow <u>13</u>	<input type="checkbox"/> Jars	T-Started <u>847</u>
(C) First Final Flow <u>39</u>	<input type="checkbox"/> Safety Joint	T-Open <u>1043</u>
(D) Initial Shut-In <u>1001</u>	<input checked="" type="checkbox"/> Circ Sub <u>N/C</u>	T-Pulled <u>1343</u>
(E) Second Initial Flow <u>51</u>	<input type="checkbox"/> Hourly Standby	T-Out <u>1603</u>
(F) Second Final Flow <u>78</u>	<input checked="" type="checkbox"/> Mileage <u>90RT</u> <u>139.50</u>	Comments
(G) Final Shut-In <u>994</u>	<input type="checkbox"/> Sampler	
(H) Final Hydrostatic <u>2329</u>	<input type="checkbox"/> Straddle	<input type="checkbox"/> Ruined Shale Packer
	<input checked="" type="checkbox"/> Shale Packer <u>250</u>	<input type="checkbox"/> Ruined Packer
Initial Open <u>36</u>	<input type="checkbox"/> Extra Packer	<input type="checkbox"/> Extra Copies
Initial Shut-In <u>45</u>	<input type="checkbox"/> Extra Recorder	Sub Total <u>325</u>
Final Flow <u>45</u>	<input checked="" type="checkbox"/> Day Standby <u>1d 9.75h</u>	Total <u>1964.50</u>
Final Shut-In <u>60</u>	<input type="checkbox"/> Accessibility	MP/DST Disc't
	Sub Total <u>1639.50</u>	

Approved By \_\_\_\_\_ Our Representative [Signature] #69

Trilobite Testing Inc. shall not be liable for damaged of any kind of the property or personnel of the one for whom a test is made, or for any loss suffered or sustained, directly or indirectly, through the use of its equipment, or its statements or opinion concerning the results of any test, tools lost or damaged in the hole shall be paid for at cost by the party for whom the test is made.





# TRILOBITE TESTING INC.

1515 Commerce Parkway • Hays, Kansas 67601

## Test Ticket

NO. 57440

Well Name & No. Rohleder Trust 2-35 Test No. 6 Date 9/30/2014  
 Company Red Oak Energy, Inc Elevation 3046 KB 3035 GL  
 Address 7701 E Kellogg Dr STE 710  
 Co. Rep / Geo. Pat Deenhan Rig Modan 22  
 Location: Sec. 35 Twp. 11 Rge. 34 Co. Logan State Ks

Interval Tested 4632 - 4650 Zone Tested Narrow  
 Anchor Length 18 Drill Pipe Run 4378 Mud Wt. 9.2  
 Top Packer Depth 4627 Drill Collars Run 238 Vis 57  
 Bottom Packer Depth 4632 Wt. Pipe Run 0 WL 8.0  
 Total Depth 4650 Chlorides 2000 ppm System LCM 6#

Blow Description IF: 1" blow.  
ISI No return.  
FF: 1/2" blow

Rec	Feet of	%gas	%oil	%water	%mud
<u>80</u>	<u>GMCO</u>	<u>20</u>	<u>35</u>	<u>45</u>	<u>10</u>
<u>50</u>	<u>60CM</u>	<u>20</u>	<u>25</u>	<u>48</u>	
Rec	Feet of	%gas	%oil	%water	%mud
Rec	Feet of	%gas	%oil	%water	%mud
Rec	Feet of	%gas	%oil	%water	%mud

Rec Total 130 BHT 127 Gravity 19 API RW — @ — °F Chlorides — ppm

(A) Initial Hydrostatic 2392  Test 1250 T-On Location 2330 9/29  
 (B) First Initial Flow 14  Jars — T-Started 0045  
 (C) First Final Flow 36  Safety Joint — T-Open 0334  
 (D) Initial Shut-In 1017  Circ Sub MC T-Pulled 0634  
 (E) Second Initial Flow 45  Hourly Standby — T-Out 0938  
 (F) Second Final Flow 64  Mileage 90 RT 139.50 Comments —  
 (G) Final Shut-In 995  Sampler —  
 (H) Final Hydrostatic 2345  Straddle —  Ruined Shale Packer —  
 Shale Packer 250  Ruined Packer —  
 Extra Packer —  Extra Copies —  
 Extra Recorder — Sub Total 0  
 Day Standby — Total 1639.50  
 Accessibility — MP/DST Disc't —  
 Sub Total 1639.50

Approved By \_\_\_\_\_ Our Representative [Signature]

Trilobite Testing Inc. shall not be liable for damaged of any kind of the property or personnel of the one for whom a test is made, or for any loss suffered or sustained, directly or indirectly, through the use of its equipment, or its statements or opinion concerning the results of any test, tools lost or damaged in the hole shall be paid for at cost by the party for whom the test is made.