

ADVANTAGE ELEVATIONS

OIL FIELD SURVEYORS

BOX 8604 - PRATT, KS 67124
(620) 672-6491

107141

INVOICE NO.

N-10 EXPLORATION LLC

OPERATOR

12

NO.

MEDICINE RIVER RANCH D

FARM

Barber

COUNTY

10
S

34s
T

11w
R

330' FNL & 1650' FWL of Sec

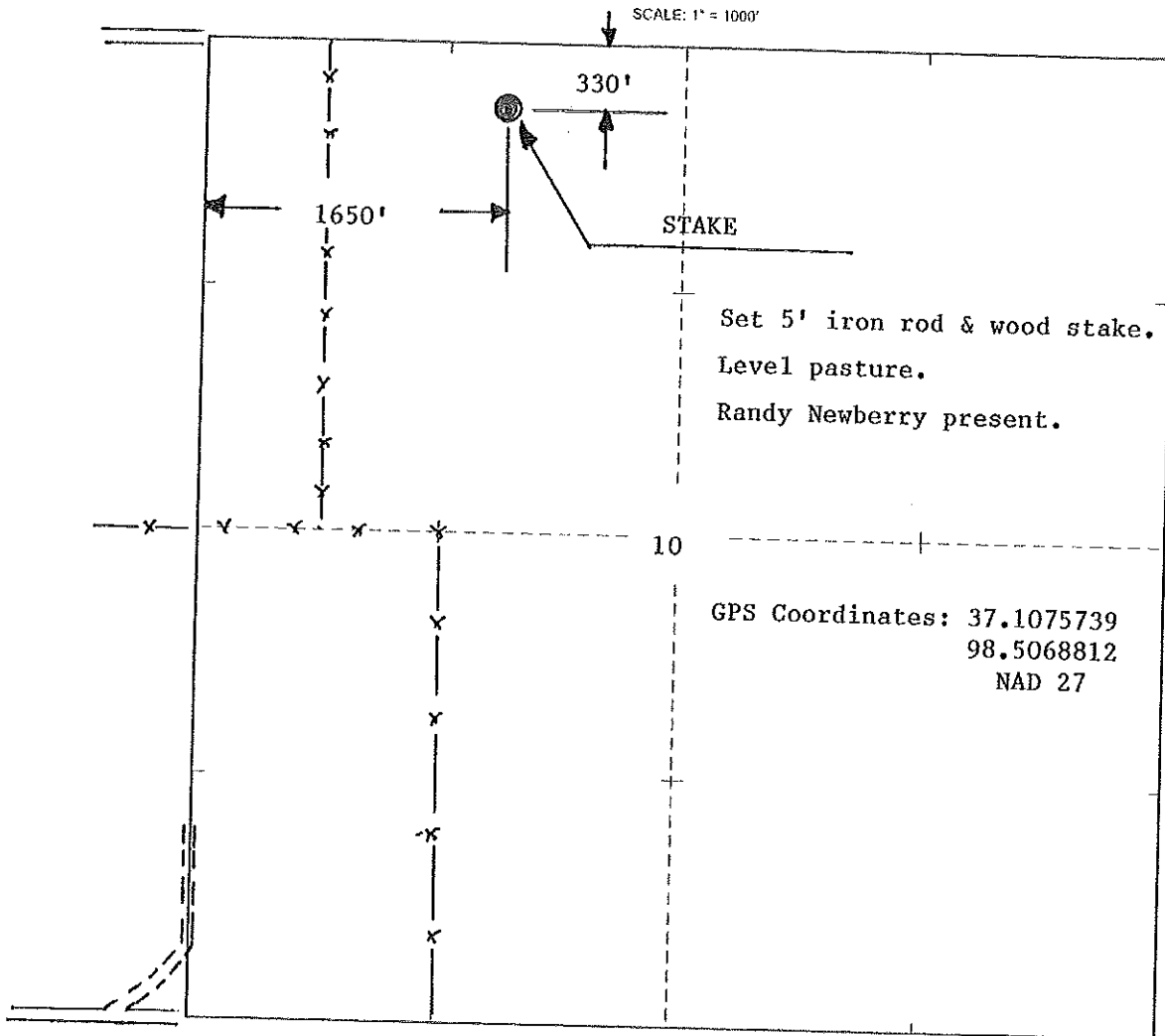
LOCATION

ELEVATION: 1344' GR

N-10 EXPLORATION LLC
PO BOX 195
ATTICA, KS 67009-0195



AUTHORIZED BY: Randy Newberry



DATE STAKED: 10/7/14

Stubbs, KS. Scale: 1" = 0.189MI. 305MT. 1,000Ft. 1 MI = 5,280'. 1 cm = 120MT.

