



BASICSM
ENERGY SERVICES
PRESSURE PUMPING & WIRELINE

1700 S. Country Estates Rd.
Liberal, Kansas 67905
Phone 620-624-2277

FIELD SERVICE TICKET
1717 06160 A

DATE _____ TICKET NO. _____

DATE OF JOB 9/28/14	DISTRICT 1717	NEW WELL <input checked="" type="checkbox"/>	OLD WELL <input type="checkbox"/>	PROD <input type="checkbox"/>	INJ <input type="checkbox"/>	WDW <input type="checkbox"/>	CUSTOMER ORDER NO.:
CUSTOMER Slubar	LEASE Graham	1-30x		WELL NO.			
ADDRESS	COUNTY Stanton	STATE Ks					
CITY	STATE	SERVICE CREW Gabe E., R. Martin					
AUTHORIZED BY Tyce	JOB TYPE: 242 sun face						
EQUIPMENT#	HRS	EQUIPMENT#	HRS	EQUIPMENT#	HRS	TRUCK CALLED	DATE 9:00 AM
178939	15					ARRIVED AT JOB	1:00 AM
372233992015-	15					START OPERATION	3:25 AM
143537547	15					FINISH OPERATION	5:11 AM
						RELEASED	6:00 AM
						MILES FROM STATION TO WELL	100

CONTRACT CONDITIONS: (This contract must be signed before the job is commenced or merchandise is delivered).


The undersigned is authorized to execute this contract as an agent of the customer. As such, the undersigned agrees and acknowledges that this contract for services, materials, products, and/or supplies includes all of and only those terms and conditions appearing on the front and back of this document. No additional or substitute terms and/or conditions shall become a part of this contract without the written consent of an officer of Basic Energy Services LP.

SIGNED: 
(WELL OWNER, OPERATOR, CONTRACTOR OR AGENT)

ITEM/PRICE REF. NO.	MATERIAL, EQUIPMENT AND SERVICES USED	UNIT	QUANTITY	UNIT PRICE	\$ AMOUNT
CL101	A-Con Blend	SK	155		2883 00
CL110	Premium Plus	SK	200		3260 00
CC109	Calcium Chloride	Lb	814		854 70
CC102	Celloflake	Lb	59		329 30
CC130	C-51	Lb	80		750 00
CF256	Guide shoe	EA	1		700 00
CF1457	Flapper Float Valve	EA	1		490 00
CF4408	Centralizers	EA	3		600 00
CF109	TOP PLUS	EA	1		470 00
E101	Heavy Equip Mileage	MI	200		1400 00
CE240	Blending & Mixing Charge	SK	305		497 00
E113	Bulk Delivery	TM	1,670		3674 00
CE201	Depth Charge 50' to 1000'	4hr	1		1200 00
CE504	Plug Container	JOB	1		250 00
E100	Pickup Mileage	MI	100		425 00
5003	Service SUPER1801	EA	1		175 00
T105	Cement Data	EA	1		550 00
CE403	add hrs	EA	6		300 00

CHEMICAL / ACID DATA:			

		SUB TOTAL	14093.20
SERVICE & EQUIPMENT	%TAX ON \$		
MATERIALS	%TAX ON \$		
TOTAL			

SERVICE REPRESENTATIVE Chad Hinz	THE ABOVE MATERIAL AND SERVICE ORDERED BY CUSTOMER AND RECEIVED BY: 
---	---

FIELD SERVICE ORDER NO.

(WELL OWNER OPERATOR CONTRACTOR OR AGENT)



BASIC[™]
ENERGY SERVICES
Liberal, Kansas

Cement Report

Customer: <i>Stebbar</i>	Lease No.	Date: <i>9/20/14</i>
Lease: <i>Graham</i>	Well # <i>1-30x</i>	Service Receipt
Casing: <i>13 3/8</i>	Depth: <i>663</i>	County: <i>Stanton</i>
Job Type: <i>Surface</i>	Formation	Legal Description

Pipe Data		Perforating Data		Cement Data
Casing size: <i>13 3/8</i>	Tubing Size	Shots/Ft		Lead <i>155 SX A - 60</i>
Depth: <i>657</i>	Depth	From	To	@ <i>11.4 #</i>
Volume: <i>96.5</i>	Volume	From	To	<i>2.95 18.10</i>
Max Press: <i>1000</i>	Max Press	From	To	Tail in <i>200 SX A - 7</i>
Well Connection: <i>P.C.</i>	Annulus Vol.	From	To	@ <i>14.8 #</i>
Plug Depth	Packer Depth	From	To	<i>1.34 6.33</i>

*1/19
9/20*

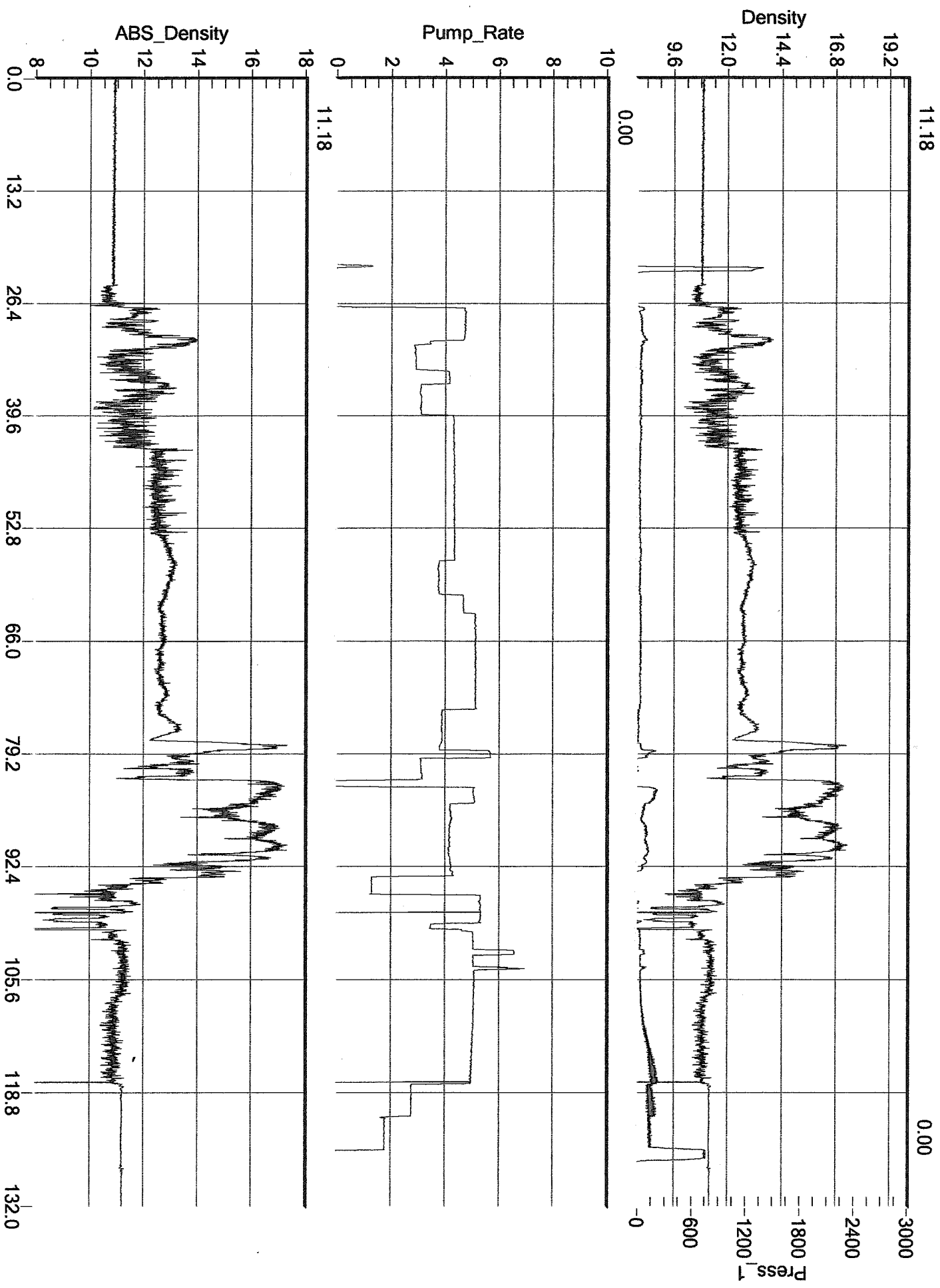
Time	Casing Pressure	Tubing Pressure	Bbls. Pumped	Rate	Service Log
<i>13:00</i>					<i>on loc, spot, safety mtg, R.O.</i>
<i>03:23</i>	<i>1500</i>				<i>Test Lines</i>
<i>03:26</i>	<i>30#</i>		<i>0</i>	<i>4</i>	<i>Start mixing @ 11.4 #</i>
<i>04:20</i>	<i>20#</i>		<i>82</i>	<i>4</i>	<i>on tail @ 14.8 #</i>
<i>04:39</i>	<i>0</i>		<i>48</i>	<i>0</i>	<i>Finished mixing, Drop Plug</i>
<i>04:41</i>	<i>0</i>		<i>0</i>	<i>5</i>	<i>Start disp, Washup on Plug</i>
<i>05:03</i>	<i>140</i>		<i>86</i>	<i>1.8</i>	<i>slow Rate</i>
<i>05:11</i>	<i>200-750</i>		<i>96.5</i>	<i>0</i>	<i>Plugdown</i>
<i>05:13</i>	<i>0</i>				<i>Release Psi, Float held</i>
					<i>Job Complete</i>

Service Units	<i>78939</i>	<i>372337726</i>	<i>1435537547</i>	
Driver Names	<i>C. King</i>	<i>Gabe E.</i>	<i>R. Martin</i>	

Duvaldo
Customer Representative

Jerry Bennett
Station Manager

Charles King
Cementer



Job Started On: 09/20/2014 @ 2:52:27 AM