



Scale 1:240 (5"=100') Imperial
Measured Depth Log

Well Name: McKinney Trust 'A' #3-23
 Location: Sec. 23 - T30S - R19W, Kiowa County, KS
 License Number: API # 15-097-21797-00-00
 Spud Date: 08-06-2014
 Surface Coordinates: 150'N of SE SE SE
 510' FSL & 330' FEL
 Bottom Hole Coordinates:
 Ground Elevation (ft): 2239' K.B. Elevation (ft): 2252'
 Logged Interval (ft): 648' To: 5218' Total Depth (ft): RTD: 5225' LTD: 5218'
 Formation: Mississippian
 Type of Drilling Fluid: Chemical/Polymer/Gel
 Region: Alford South
 Drilling Completed: 08-12-2014

Printed by MUD.LOG from WellSight Systems 1-800-447-1534 www.WellSight.com

OPERATOR

Company: McCoy Petroleum Corporation, KCC License #5003
 Address: 9342 E Central
 Wichita, KS 67206

GEOLOGIST

Name: Zach Wiele
 Company: McCoy Petroleum Corporation
 Address: 9342 E. Central
 Wichita, KS 67206

Casing & Deviation Surveys:

Spud at 5:30 pm on 08/06/14.

1st Surface Casing String:

Drilled 17-1/2" hole to 267'. Ran 6 joints of 54# ; 13-3/8" surface casing.
 Tallied 248', set at 263' KB. Cut Texas shoe. Strapped bottom 3 joints. Tacked all collars & pins .
 Cemented with 250 sks 60/40 POZ; 3% Gel; 3% CC; 1/4# CF. Cement did circulate. Plug down at
 2:00 am on 08/07/14. Basic Energy Svcs Cementing ticket #11117.

8/7/2014 TD 267'. WOC.

8/8/2014 TD 690'. Drilling ahead. No mud lost on 12 1/4" hole. Drilled 12 1/4" hole to
 650'. Deviation 1/2° @ 650'. Ran 15 joints of 8 5/8", 23#, new surface casing.
 Tallied 631.33'. Set at 646'KB. Welded straps on guide shoe and bottem 3 joints.
 Tacked collars on all. Welded collars on top 2 joints. Basket at 290' KB. Basic
 Energy cemented with 175 sks A-Conn, 2%Gel, 3%CC and 1/4#/sx Celoflake. Tailed with
 150 sxs 60/40 Pozmix, 3%CC, 1/4#/sx Celoflake. Cement did circulate. Plug down at
 7:30 P.M. on 8/7/14.

DRILL STEM TEST

DST #1: 5088-5132'
 Times: 5 - 60 - 90 - 120"
 IF: BOB/ 3" 25 sec
 ISIP: No Blow Back
 FF: BOB/ 5 1/2"
 FSIP: No Blow Back
 Rec: 156' Mud w/ Trace of Oil (100%Mud), 474' Gas (100%Gas)
 IH: 2580
 FH: 2495
 IF: 52-67
 FF: 56-99
 SIP: 886-833#

ROCK TYPES

LITHOLOGY

- Char-grn sh
- Anhy
- Bent
- Brec
- Cht
- Clyst
- Coal
- Dol
- Gyp
- Igne
- Lmst
- Mrlst
- Salt
- Shale
- Shcol
- Shgy
- Sltst
- Ss
- Congl

- Blk carb sh
- Green sh
- Brn sh
- Red sh
- Gray shale
- Boundst
- Chalky
- Cryxln

- Earthy
- Finexln
- Grainst
- Lithogr
- Microxln
- Mudst
- Packst
- Wackest

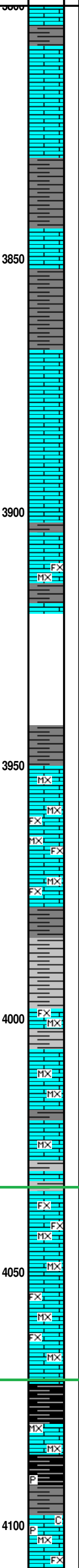
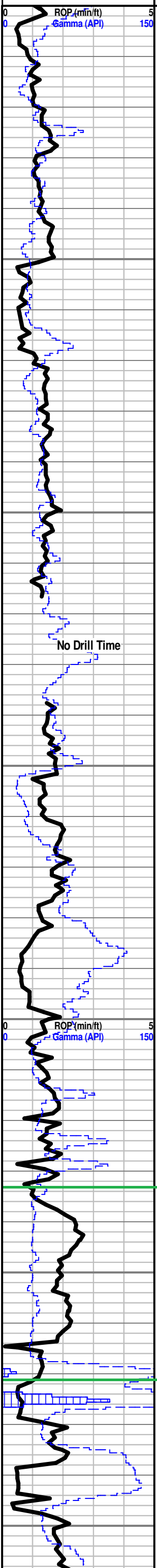
- OIL SHOW**
- Even
 - Spotted
 - Ques
 - Gas
 - Dead

McKinney Trust 'A' #3-23
 ROP (min/ft) ———
 Gamma (API) - - - -

Depth
 Lithology
 Oil Shows

Geological Descriptions

TG, C1-C5
 TG (Units) ———
 C1 (units) ———
 C2 (units) - - - -
 C3 (units) - - - -
 C4 (units) - - - -



McCoy Petroleum Corporation
McKinney Trust 'A' #3-23

SPOT: 510' FSL & 330' FEL
 150'N of SE - SE - SE
 Sec. 23 - T. 30S - R. 19W
 KIOWA COUNTY, KANSAS
 A.P.I #: 15-097-21797-00-00
 ELEVATION: 2252' K.B. 2239' G.L.

CONTRACTOR: STERLING DRILLING - RIG #5

GEOLOGIST: ZACH WIELE

GEOLOGIST ON LOCATION @ 5:40 AM on 8/10/2014 @ 3895'

Deviation Survey's Taken @ 267' = 1/4 Degree, 650' = 1/2 Degree, 5132' = 1/2 Degree

Note: All Samples Have Been Lagged To Depth By Calculated Time.

Begin 30' Kelly Down Sample Examination @ 3930'

Ls Crm-Gry-Wht, Fn-microIn dns micrite, Chlky, Sh Char-Gry-Red-Aqua, soft, no odr, no flor, no stn, NS

Ls Crm-Gry, Micro-FxIn, dns micrite, Sh Char-Gry-Brn-Red, soft, w/pyr-inclus, no odr, no flor, no stn, NS

Ls Crm-Wht-Gry, Micro-FxIn, Dns Micrite w/Pyr-Inclus, Sli Foss, Sh Gry-Red-Aqua, soft, fissil, Mass Pyr(1 Pc), no odr, no flor, no stn, NS

Ls Crm-Gry-Wht, FxIn Dns micrite grad poor inxIn PP Por, Sli Foss, Sh Gry-BrnRed, soft fiss, w/Pyr-Inclus, no odr, no flor, no stn, NS

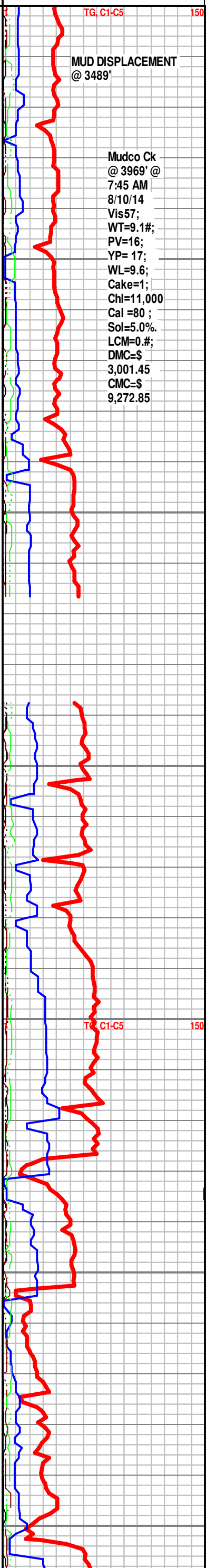
LECOMPTON 'B' 4033' (-1781)

Ls Crm-Wht-Gry, Fn-MicroIn Dns micrite, Foss(crin), Sh Gry-Red-Aqua, fiss-soft, no odr, no flor, no stn, NS

Ls Wht-Crm-Gry, FxIn micrite, Foss-inclus, Sh Blk Carb-Gry-Red-Aqua, soft fiss, Scat Chrt, Crm, no odr, no flor, no stn, NS

QUEEN HILL 4071' (-1819)

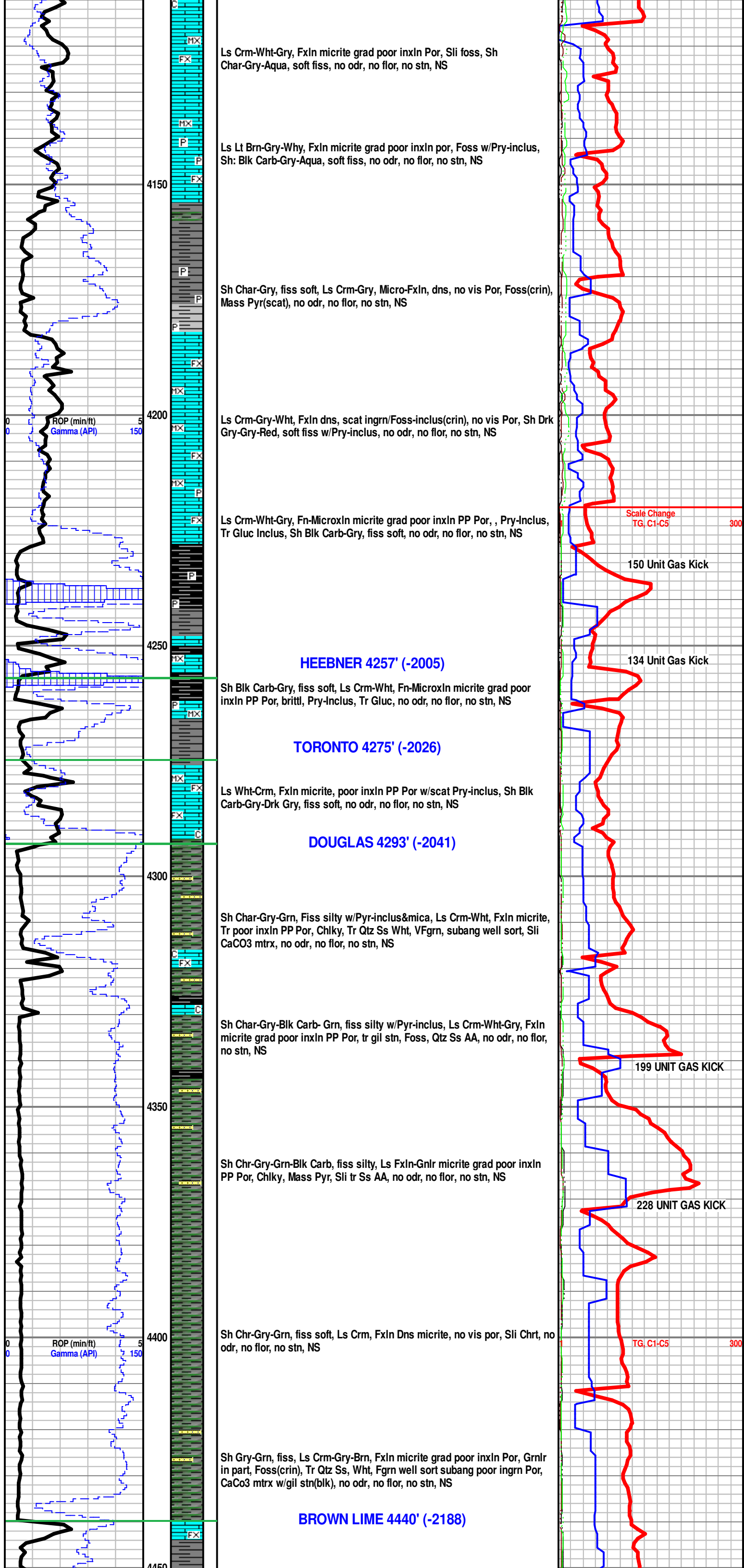
Sh Blk Carb-Char-Gry, soft fiss, Ls Crm-Wht-Gry, FxIn micrite grad poor inxIn Por, Sli Chlky, few w/Pyr-inclus, no odr, no flor, no stn, NS

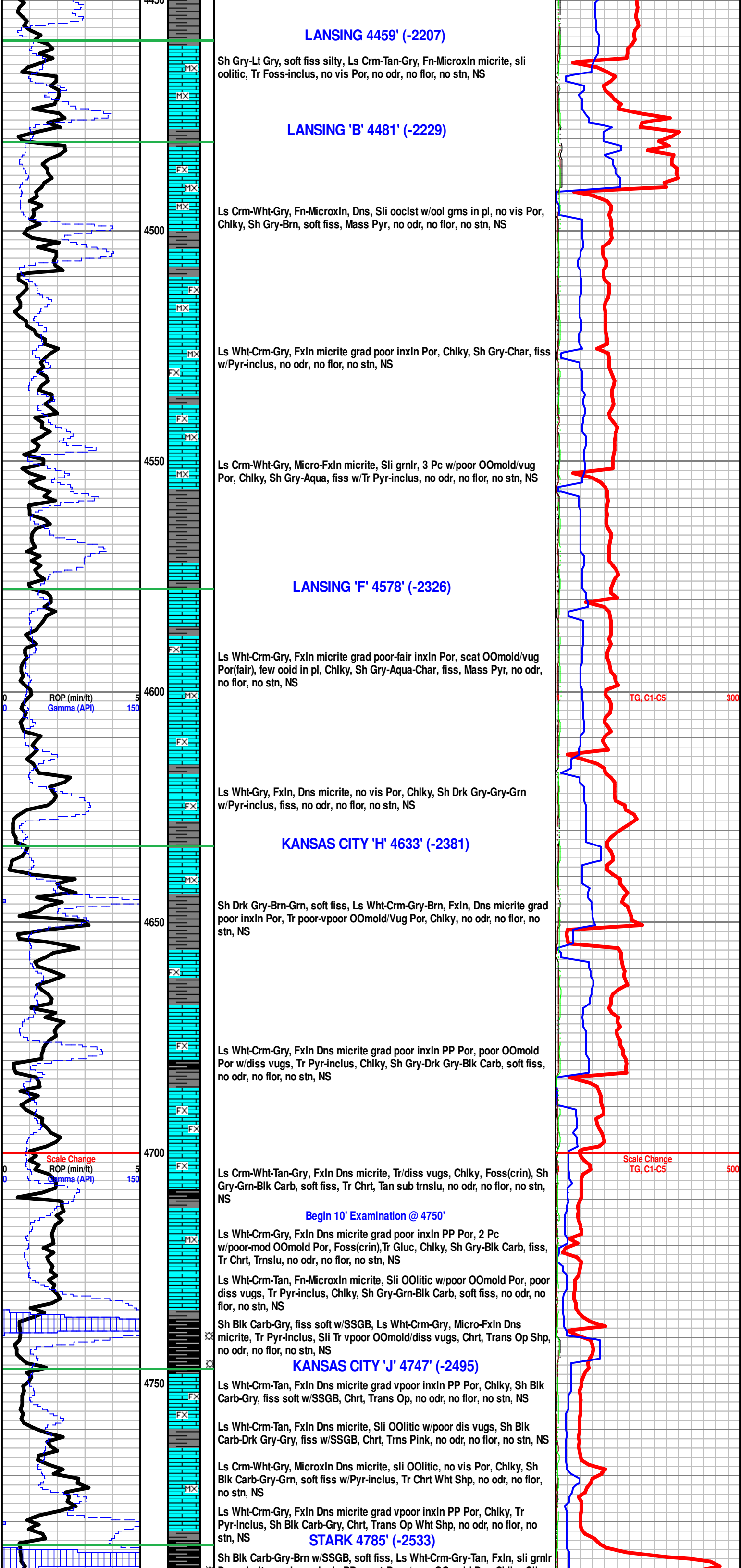


MUD DISPLACEMENT @ 3489'

Mudco Ck @ 3969' @ 7:45 AM 8/10/14 Vis57; WT=9.1#; PV=16; YP= 17; WL=9.6; Cake=1; ChI=11,000 Cal =80 ; Sol=5.0%. LCM=0.#; DMC=\$ 3,001.45 CMC=\$ 9,272.85

TG, C1-C5 150





LANSING 4459' (-2207)

Sh Gry-Lt Gry, soft fiss silty, Ls Crm-Tan-Gry, Fn-MicroIn micrite, sli oolitic, Tr Foss-inclus, no vis Por, no odr, no flor, no stn, NS

LANSING 'B' 4481' (-2229)

Ls Crm-Wht-Gry, Fn-MicroIn, Dns, Sli ooclst w/ool grns in pl, no vis Por, Chlky, Sh Gry-Brn, soft fiss, Mass Pyr, no odr, no flor, no stn, NS

Ls Wht-Crm-Gry, FxIn micrite grad poor inxIn Por, Chlky, Sh Gry-Char, fiss w/Pyr-inclus, no odr, no flor, no stn, NS

Ls Crm-Wht-Gry, Micro-FxIn micrite, Sli grnlr, 3 Pc w/poor OOmold/vug Por, Chlky, Sh Gry-Aqua, fiss w/Tr Pyr-inclus, no odr, no flor, no stn, NS

LANSING 'F' 4578' (-2326)

Ls Wht-Crm-Gry, FxIn micrite grad poor-fair inxIn Por, scat OOmold/vug Por(fair), few ooid in pl, Chlky, Sh Gry-Aqua-Char, fiss, Mass Pyr, no odr, no flor, no stn, NS

Ls Wht-Gry, FxIn, Dns micrite, no vis Por, Chlky, Sh Drk Gry-Gry-Grn w/Pyr-inclus, fiss, no odr, no flor, no stn, NS

KANSAS CITY 'H' 4633' (-2381)

Sh Drk Gry-Brn-Grn, soft fiss, Ls Wht-Crm-Gry-Brn, FxIn, Dns micrite grad poor inxIn Por, Tr poor-vpoor OOmold/Vug Por, Chlky, no odr, no flor, no stn, NS

Ls Wht-Crm-Gry, FxIn Dns micrite grad poor inxIn PP Por, poor OOmold Por w/diss vugs, Tr Pyr-inclus, Chlky, Sh Gry-Drk Gry-Blk Carb, soft fiss, no odr, no flor, no stn, NS

Ls Crm-Wht-Tan-Gry, FxIn Dns micrite, Tr/diss vugs, Chlky, Foss(crin), Sh Gry-Grn-Blk Carb, soft fiss, Tr Chrt, Tan sub trnslu, no odr, no flor, no stn, NS

Begin 10' Examination @ 4750'

Ls Wht-Crm-Gry, FxIn Dns micrite grad poor inxIn PP Por, 2 Pc w/poor-mod OOmold Por, Foss(crin), Tr Gluc, Chlky, Sh Gry-Blk Carb, fiss, Tr Chrt, Trnslu, no odr, no flor, no stn, NS

Ls Wht-Crm-Tan, Fn-MicroIn micrite, Sli Oolitic w/poor OOmold Por, poor diss vugs, Tr Pyr-inclus, Chlky, Sh Gry-Grn-Blk Carb, soft fiss, no odr, no flor, no stn, NS

Sh Blk Carb-Gry, fiss soft w/SSGB, Ls Wht-Crm-Gry, Micro-FxIn Dns micrite, Tr Pyr-Inclus, Sli Tr vpoor OOmold/diss vugs, Chrt, Trans Op Shp, no odr, no flor, no stn, NS

KANSAS CITY 'J' 4747' (-2495)

Ls Wht-Crm-Tan, FxIn Dns micrite grad vpoor inxIn PP Por, Chlky, Sh Blk Carb-Gry, fiss soft w/SSGB, Chrt, Trans Op, no odr, no flor, no stn, NS

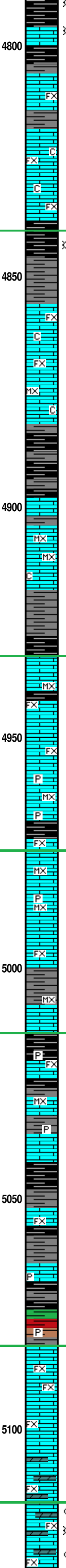
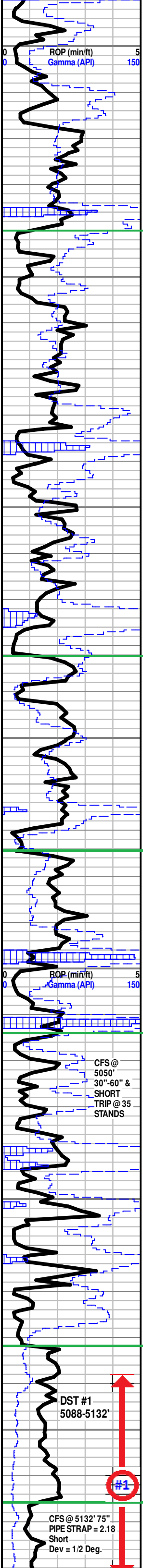
Ls Wht-Crm-Tan, FxIn Dns micrite, Sli Oolitic w/poor dis vugs, Sh Blk Carb-Drk Gry-Gry, fiss w/SSGB, Chrt, Trns Pink, no odr, no flor, no stn, NS

Ls Crm-Wht-Gry, MicroIn Dns micrite, sli Oolitic, no vis Por, Chlky, Sh Blk Carb-Gry-Grn, soft fiss w/Pyr-inclus, Tr Chrt Wht Shp, no odr, no flor, no stn, NS

Ls Wht-Crm-Gry, FxIn Dns micrite grad vpoor inxIn PP Por, Chlky, Tr Pyr-Inclus, Sh Blk Carb-Gry, Chrt, Trans Op Wht Shp, no odr, no flor, no stn, NS

STARK 4785' (-2533)

Sh Blk Carb-Gry-Brn w/SSGB, soft fiss, Ls Wht-Crm-Gry-Tan, FxIn, sli grnlr



Dns micrite grad poor inxIn PP por, 1 Pc w/poor OOmold Por, Chlky, Sli Foss(crin), no odr, no flor, no stn, NS

Sh Blk Carb-Gry, fiss w/SSGB, Ls Crm-Gry-Wht, FxIn Dns micrite, no vis Por, Sli Foss, no odr, no flor, no stn, NS

Sh Blk Carb-Gry-Brn, fiss w/SSGB, Ls Crm-Wht-Gry, FxIn Dns grad poor inxIn Por, Scat poor OOmold Por, Foss(crin), no odr, no flor, no stn, NS

Ls Lt Tan-Crm-Wht, FxIn micrite grad poor PP inxIn Por, Chlky, Sh Gry-Char, fiss soft, no odr, no flor, no stn, NS

Ls Tan-Crm-Lt Gry, FxIn micrite grad vpoor-poor inxIn PP Por, Chlky, Foss(crin), Sh Gry-Char-Blk Carb w/SSGB fiss soft, no odr, no flor, no stn, NS

HUSHPUCKNEY 4840' (-2588)

Sh Blk Carb w/SSGB-Gry-Aqua, fiss silty, Ls Crm-Wht-Lt Gry-Tan, FxIn micrite grad poor inxIn PP/vug Por, Chlky, Chrt Trans Wht Op Shp, no odr, no flor, no stn, NS

Sh Char-Gry-Aqua-Blk Carb w/SSGB, fiss, Ls Crm-Gry-Tan, FxIn micrite grad poor inxIn PP Por, Tr poor OOmold/vug Por, Chlky, no odr, no flor, no stn, NS

Ls Gry-Crm-Wht-Tan, FxIn micrite, Tr poor inxIn PP Por, Chlky, Sh Gry-Aqua, fiss, no odr, no flor, no stn, NS

Ls Crm-Wht-Gry-Tan, FxIn micrite grad poor inxIn PP Por, Chlky, Tr Pyr-Inclus, Sh Gry-Char-Aqua, fiss soft, no odr, no flor, no stn, NS

Ls Crm-Gry-Tan, FxIn Dns Micrite, Scat poor inxIn PP Por, Chlky, Sh Gry-Char, fiss, Chrt Trans Wht Shp, no odr, no flor, no stn, NS

Sh Blk Carb-Gry-Char, fiss, Ls Crm-Lt Gry-Tan, Fn-microxIn, dns, chlky, no odr, no flor, no stn, NS

Sh Char-Gry-Grn-Blk Carb, soft fiss w/Pyr-Inclus, Ls Crm-Wht-Gry, Dns micrite, Chlky, Pyr(mass), no odr, no flor, no stn, NS

Ls Gry,Brn-Crm-Wht, MicroxIn Dns micrite, Foss-inclus, Chlky, Sh Blk Carb-Gry-Char-Aqua, fiss, no odr, no flor, no stn, NS

Ls Gry-Wht-Crm, Fn-MicroxIn micrite grad poor inxIn PP Por, 3 pc w/vpoor OOmold Por w/oids in pl, Sh Gry-Char-Blk Carb, fiss w/Pyr-Inclus, no odr, no flor, no stn, NS

MARMATON 4932' (-2680)

Ls Wht-Crm-Gry, FxIn micrite grad vpoor inxIn PP Por, Sh Blk Carb-Gry, fiss, Tr Gluc-Inclus, no odr, no flor, no stn, NS

Ls Wht-Gry-Tan, FxIn micrite grad poor inxIn Por, Few w/poor-fair inxIn PP/vug por, grnlr in part, Sh Blk Carb-Gry-Aqua, fiss soft w/Pyr-Inclus, no odr, no flor, no stn, NS

Ls Wht-Crm-Lt Gry, FxIn micrite grad poor inxIn PP Por, Sh Blk Carb-Gry-Grn, Fiss, no odr, no flor, no stn, NS

Sh Blk Carb-Gry-Aqua, fiss, Ls, Crm-Wht-Tan, Fn-microxIn, poor inxIn PP Por, Foss(crin), no odr, no flor, no stn, NS

PAWNEE 4974' (-2722)

Ls Crm-Wht, FxIn micrite, Dns grad poor inxIn Por, Sh Gry-Char-Aqua, fiss soft, no odr, no flor, no stn, NS

Ls Crm-Wht, MicroxIn micrite, no vis Por, foss(crin) Sh Blk Carb-Gry-Aqua, soft fiss, Pyr-inclus, no odr, no flor, no stn, NS

Ls Crm-Wht, Micro-FxIn micrite, no vis Por, Sh Blk Carb-Gry-Aqua-Grn, fiss soft, no odr, no flor, no stn, NS

Sh Blk Carb-Gry-Grn, soft fiss, Ls Wht-Crm-Tan, FxIn micrite, poor inxIn PP Por, no odr, no flor, no stn, NS

Sh Blk Carb-Char-Gry, fiss, Ls Wht-Crm-Tan, Micro-FxIn micrite, Dns, Chrt Wht-Op Shp, no odr, no flor, no stn, NS

CHEROKEE 5014' (-2762)

Sh Blk Carb-Gry, fiss, Ls Micro-FxIn grad poor inxIn PP Por, Mass Pyr, Chrt Wht Op, no odr, no flor, no stn, NS

30" CFS @ 5050' Sh Blk Carb-Gry-Char, fiss, Ls Wht-Crm-Lt Gry, Micro-FxIn Dns micrite grad poor PP inxIn Por, no odr, no flor, no stn, NS

60" CFS @ 5050', Sh Blk Carb-Gry-Chr-Aqua, fiss silty w/Pyr-Inclus, Ls Wht-Lt Tan-Lt Gry, Micro-FxIn micrite grad poor inxIn PP Por, Mass Pyr, Foss(brach), no odr, no flor, no stn, NS

Sh Blk Carb-Gry-Grn-Aqua, fiss soft, Ls Crm-Tan, Micro-FxIn micrite grad poor inxIn PP Por, Chrt Wht-Op, no odr, no flor, no stn, NS

Sh Blk Carb-Gry-Grn-Red, fiss silty, Ls Crm-Wht-Tan-Gry, Micro-FxIn micrite grad poor inxIn Por w/Tr Gluc/Pry-Inclus, Chrt Gry Op Shp, no odr, no flor, no stn, NS

Sh Blk Carb-Gry-Aqua-Red, fiss soft, Ls Wht-Crm-Tan, FxIn micrite, poor inxIn Por, Chrt AA, no odr, no flor, no stn, NS

MISSISSIPPIAN 5072' (-2830)

Ls Wht-Crm, FxIn, poor-med inxIn Por w/Gluc-Inclus, Scat vugs, Blk Gil Stn, Sh Blk Carb-Gry-Oliv-Red, soft fiss, Chrt Peach Op Trip Shp, no odr, no flor, no stn, NS

Ls Wht-Crm-Lt Tan-Tan, FxIn Dns micrite grad poor-fair inxIn PP Por, Scat Gil Stn(Blk),sli Dol, Sh Vari Color Blk Carb-Gry-Grn-Aqua-Oliv-Red-Mrn fiss soft, Chrt Wht-Op-Orng-Trip Shp, no odr, no flor, no stn, NS

30" CFS @ 5132' Dol/Ls Wht-Crm, FxIn, poor-med inxIn Pin-Pt Por, Lt Brn Stn(Wht Grn Flor scat in tray), Drk Blk Gil Stn w/Gluc-Inclus, med odr, SSG, No FO, Brittle, Sh Vari Color, Chrt Orng-Trip- Op Shp

SPERGEN POROSITY 5116' (-2864)

60" CFS @ 5132' Dol/Ls Wht-Crm, poor-med-good Pin-Pt inxIn Sucr Por, Spt-Sat Lt Brn Stn w/good Wht Grn Flor(scst tru tray), Drk Gil Stn w/Gluc-Inclus, med odr, GSG, Wry Lt Brn Oil Spts(afttr 10% HCl), Sh Blk Carb-Gry-Red, Fiss

75" CFS @ 5132' Dol/Ls Wht-Crm, FxIn, Med-Good Pin-Pt inxIn Sucr Por, strk-sat Lt Brn Stn w/Drk Blk Gil Stn(w/Gluc-Inclus), Med Odr, Wht-Grn Flor(scst tru try 3-5%), GSG, Wry Lt Brn Oil Spts(afttr 10% HCl), brittle, Sh Blk Carb-Gry-Red

TG, C1-C5 500

TG, C1-C5 500

Scale Change TG, C1-C5 500

Mudco Ck @ 4988' @ 8:45 AM 8/11/14 Vis=51; WT=9.3#; PV=15; YP= 15; WL=9.2; Cake=1; Chl=7,000; Cal =80 ; Sol=6.7%. LCM= 3#; DMC=\$ 3,066.70 CMC=\$ 12,339.55

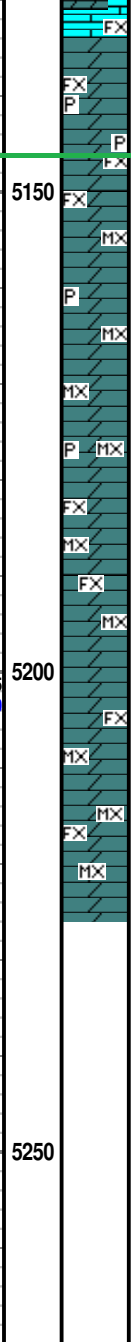
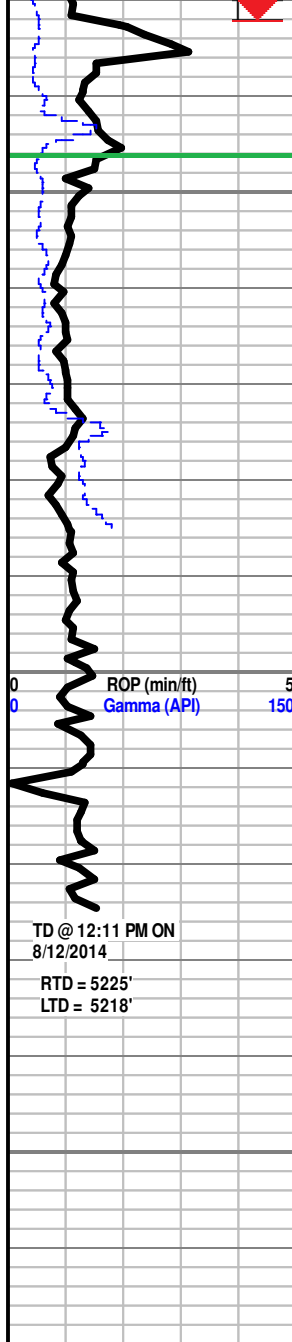
Ck @ 5132' @ 8:00 AM 8/12/14 Vis=80; WT=9.3#; PV=24; YP= 25; WL=12.4; Cake=1; Chl=11,000 Cal =400 ; Sol=6.4%. LCM= 3#; DMC=\$ 1,569.80 CMC=\$ 13,909.35

DST #1 5088-5132'

#1

CFS @ 5132' 75" PIPE STRAP = 2.18 Short Dev = 1/2 Deg.

315 UNIT GAS KICK



Dol/Ls Crm-Tan-Gry, FxIn micrite grad poor-fair Pin-Pt InxIn Por, Few Scat pc w/fair-good InxIn PP Por w/dis vugs(flor,brn stn, sluff), Sh Blk Carb-Gry-Brn-Aqua, fiss, Foss(crin), Pyr-Inclus, Chrt Drk Gry Trans Op Shp, fnt odr, no flor,no stn, NS

WARSAW POR 5146' (-2894)

Dol/Ls Lt Gry-Crm, FxIn, Poor-Fair InxIn Pin-Pt Por, w/Gluc-Inclus, Sh Blk Carb-Gry-Brn-Aqua, fiss, Tr Drk Gil Stn, no odr, sli tr flor(sluff), no stn, NS

Dol Gry-Tan-Crm, FxIn-MicroxIn, poor-fair Pin-Pt InxIn Por w/ Tr vugs, Gluc-Inclus, Sh Blk Carb-Gry-Grn, fiss,w/Pyr-Inclus, no odr, no flor(1pc sluff), no stn, NS

Dol Gry-Lt Gry-Tan, Fn-MicroxIn micrite, poor-fair Pin-Pt InxIn Por, fri, Gluc-Inclus, Sh Blk Carb-Gry, no odr, no flor, no stn, NS

Dol Gry-Crm, Fn-MicroxIn- micrite grad poor-fair-Good Pin-Pt InxIn Por, scat vug, sli foss inclus, Sh Gry-Drk Gry, fiss, no odr, no flor, no stn, NS

30" CFS @ 5225 Dol Gry-Crm-Wht,Fn-MicroxIn micrit, poor-fair lxl Por grad good InxIn suc Por, w/tr vug Por, w/foss-chrt inclus,Gluc-inclus, (trc spts FO in Try, fair odr, scat wht lt grn flor, lt brn stn, 2-3% of try) Sh Gry-Grn, fiss,

60" CFS @ 5225' Dol Gry-Crm-Wht, Fn-MicroxIn micrit, poor-fair lxl Por grad good InxIn suc Por, w/tr vug Por, w/foss-chrt inclus,Gluc-inclus, (2 spts FO in Try, fair odr, scat wht lt grn flor, lt brn stn, <4% of try) Sh Gry-Grn, fiss

90' CFS @ 5225 Dolo, Gry-Crm-Wht, Fn-MicroxIn micrite, poor-fair lxl Por, grad good InxIn suc Por, w/tr vug, foss/chrt inclus,Gluc-Inclus (scat wht-grn flor(<5% in smp),fair-good odr, lt brn stn, GSFO aft 10%HCL), Sh Gry-Grn, soft fiss, Mass Pyr

RTD = 5225'
LTD = 2218'

Electric Logs Ran By Weatherford Logging: Dual Induction, Compensated Density-Neutron & Microresistivity Logs.

Geologist Left Location @ 12:45 AM on 8/13/2014

~~ DST # 1~~
Interval: 5088'-5132'.
Times: 5"-60"-90"-150";
Blow: IF=BOB/ 3min
25sec, ISIP=No Blow
Back, FF= BOB/ 5 1/2",
FSIP= No Blow Back
Rec: 156' Mud w/Tr
Oil(100%M), 474'
Gas(100%G)
Pressures:
IH= 2580#;
FH 2495#;
IF= 52-67#;
FF = 56-99#;
ISIP= 886#;
FSIP= 833#;
TEMP= 121 degrees. F.

TG, C1-C5 500

ROP (min/ft) 5
Gamma (API) 150
TD @ 12:11 PM ON
8/12/2014
RTD = 5225'
LTD = 5218'