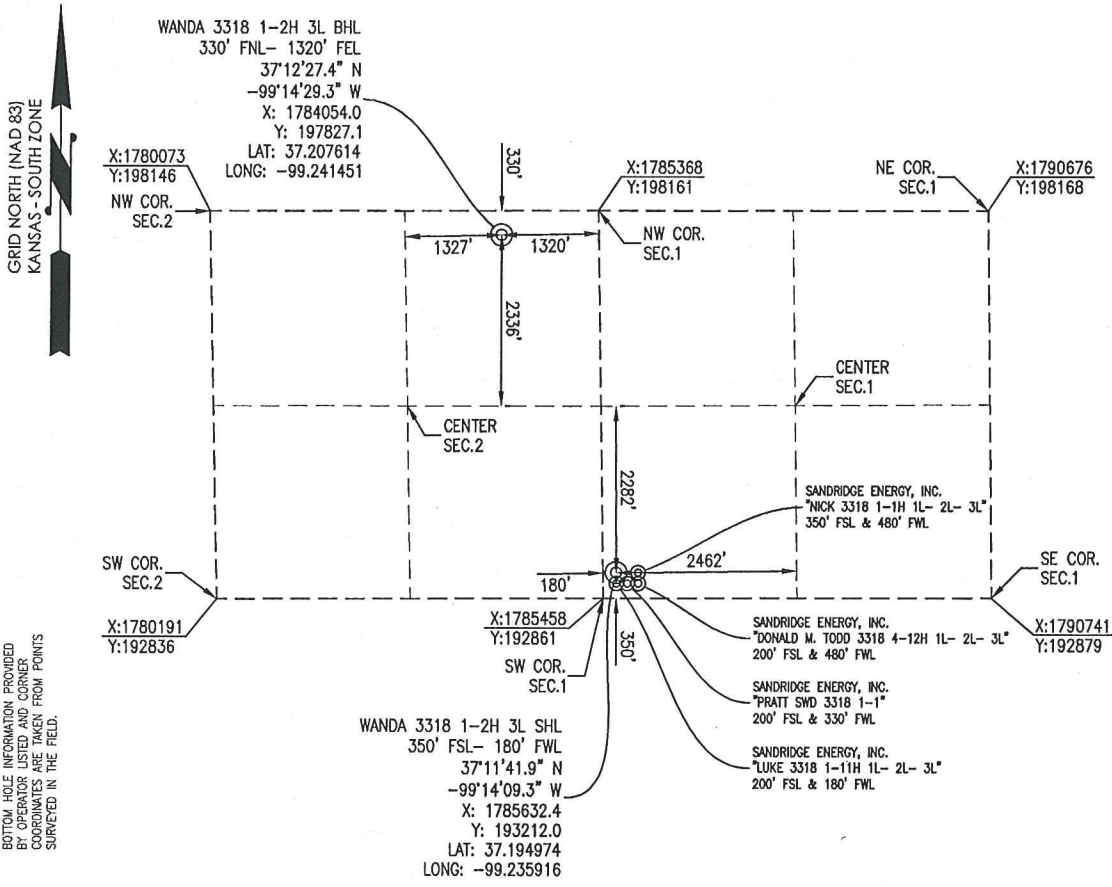


COMANCHE COUNTY, KANSAS  
 350' FSL- 180' FWL SECTION 1 TOWNSHIP 33S RANGE 18W 6TH P.M.



BOTTOM HOLE INFORMATION PROVIDED BY OPERATOR LISTED AND CORNER COORDINATES ARE TAKEN FROM POINTS SURVEYED IN THE FIELD.

OPERATOR: SANDRIDGE ENERGY, INC.  
 LEASE NAME: WANDA 3318

WELL NO: 1-2H 3L

**ELEVATION:**  
 1927' GR. AT STAKE

TOPOGRAPHIC & VEGETATION: LOCATION FELL IN A FIELD

GOOD DRILL SITE: YES  
 REFERENCE STAKES OR ALTERNATE LOCATION STAKES SET: NONE

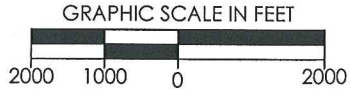
BEST ACCESSIBILITY TO LOCATION: SOUTH LINE

DISTANCE & DIRECTION FROM HWY JCT OR TOWN: FROM THE JCT. OF US-160 & ROAD 19 (±6.0 MILES EAST OF COLDWATER, KS) TRAVEL SOUTH ON ROAD 19 FOR ±6.0 MILES TO THE SOUTHEAST CORNER OF SECTION 1, T33S-R18W.

(THE FOLLOWING INFORMATION WAS GATHERED USING A GPS RECEIVER ACCURACY ±2-3 METERS)  
 GPS DATUM: NAD-27  
 LAT: 37.194974  
 LONG: -99.235916  
 STATE PLANE COORDINATES: ZONE: KS-SOUTH NAD-27  
 X: 1785632.4  
 Y: 193212.0

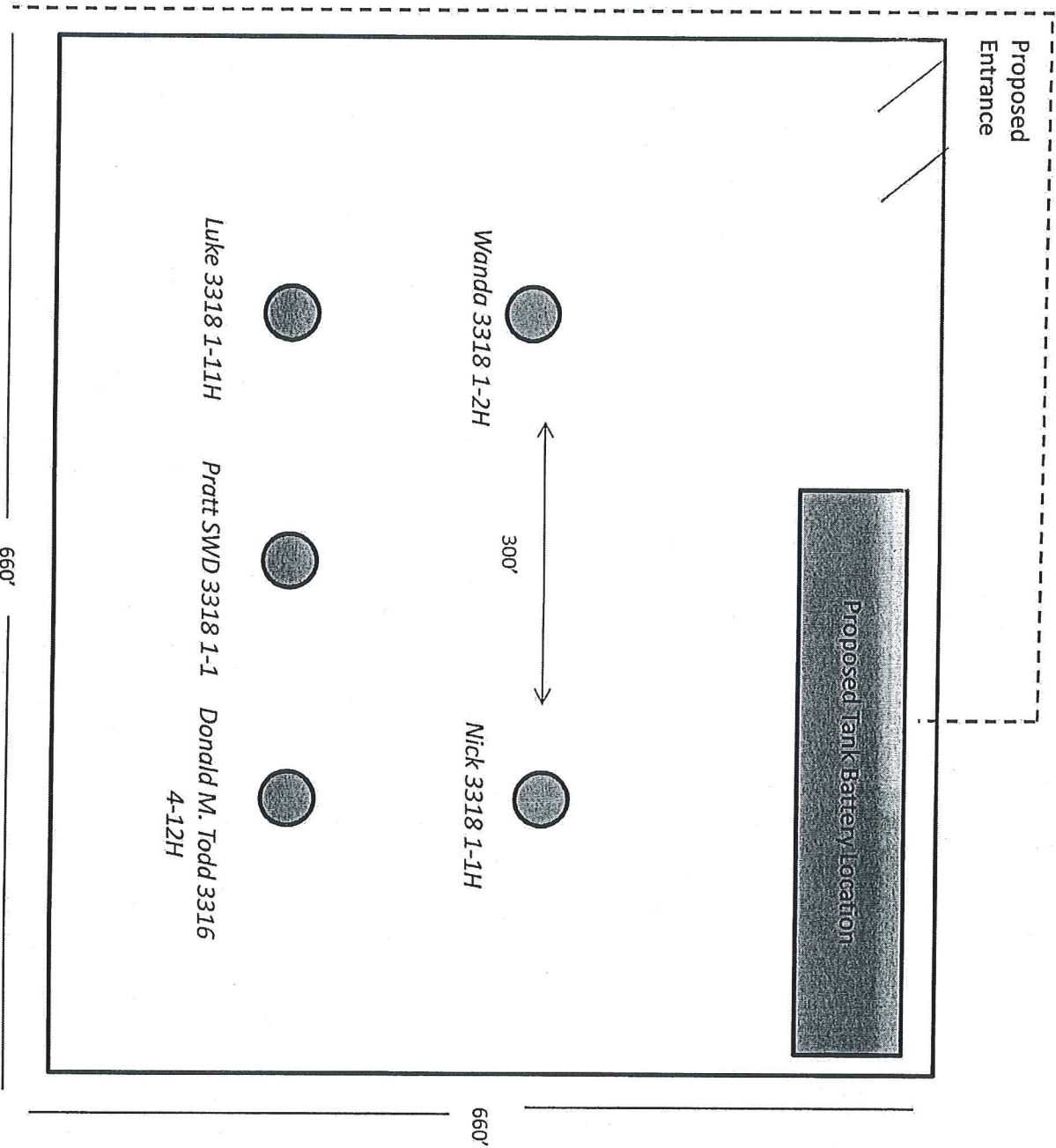
DATE STAKED: 5-14-2014

GENERAL NOTES:  
 THE TIES AND FOOTAGES SHOWN ON THIS PLAT ARE FROM LINES OF OCCUPATION FROM A SURVEY MADE ON THE GROUND AND / OR BEARING AND DISTANCES FROM THE GENERAL LAND OFFICE PLAT OF THE AREA SHOWN AND MAY NOT BE THE ACTUAL PROPERTY CORNERS. THIS PLAT DOES NOT REPRESENT A TRUE BOUNDARY SURVEY. DRILL SITE CONDITION DETERMINATIONS WERE MADE BY SANDRIDGE ENERGY INC. REPRESENTATIVES.



REVISION		<b>SandRidge</b>	
▲	MOVED BHL (10-08-2014)	"WANDA 3318 1-2H 3L" PART OF THE SW1/4 OF SECTION 1, T-33-S, R-18-W PROPOSED DRILL SITE COMANCHE COUNTY, KANSAS	
SCALE: 1" = 2000'		DRAWN BY: MF SHEET NO.: 1 OF 4	
PLOT DATE: 10-08-2014			

Proposed Electric Line



**Wanda 3318 1-2H**  
**Comanche County, KS**

Unit Description:

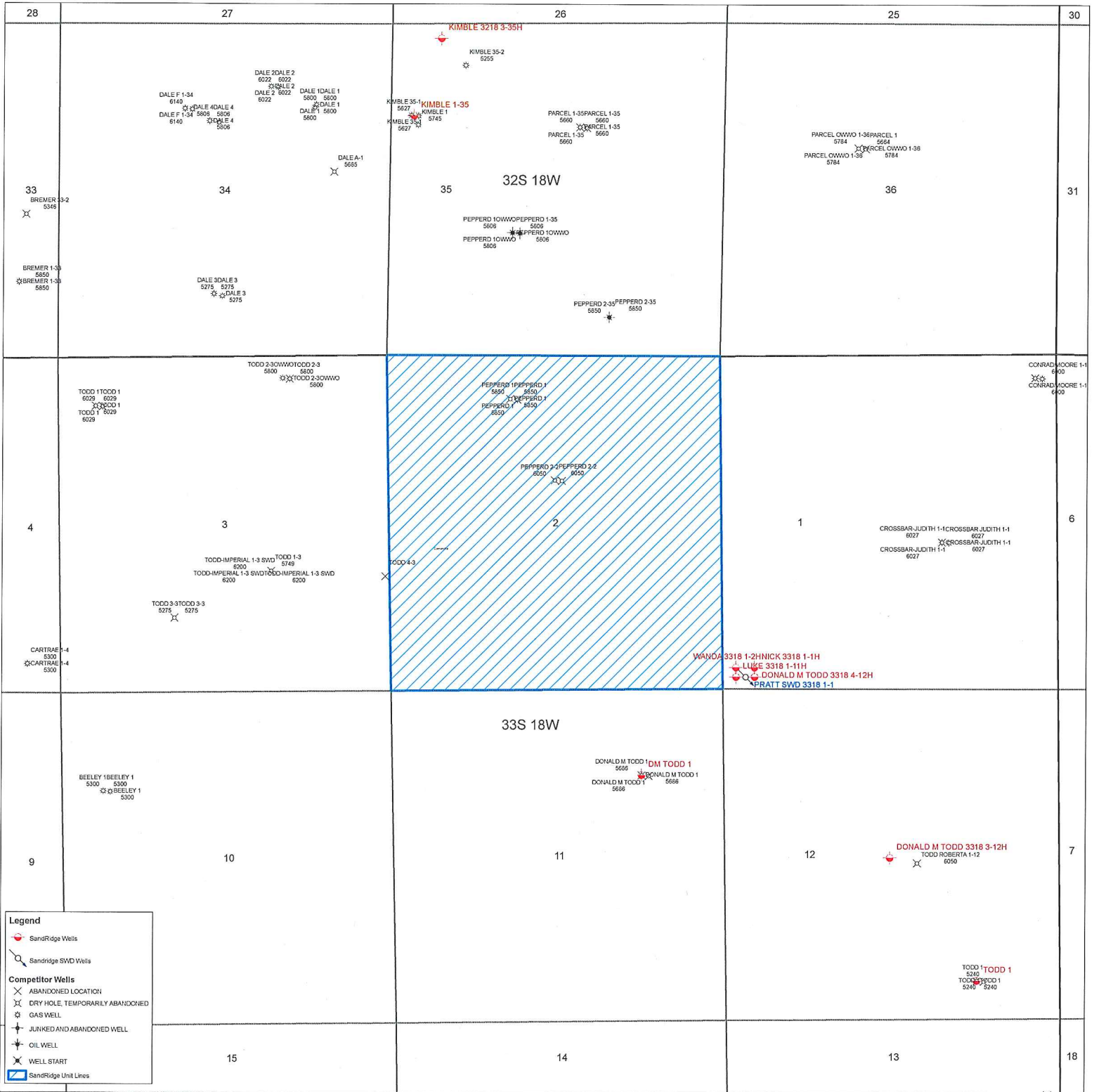
All of 2-33S-18W

Surface Owner:

SandRidge Exploration and Production, LLC

123 Robert S Kerr Ave

Oklahoma City, OK 73102



**Legend**

- SandRidge Wells
- Sandridge SWD Wells
- Competitor Wells**
- ABANDONED LOCATION
- DRY HOLE, TEMPORARILY ABANDONED
- GAS WELL
- JUNKED AND ABANDONED WELL
- OIL WELL
- WELL START
- SandRidge Unit Lines