



**Natural Gas • Crude Oil
Exploration & Production**

McCOY PETROLEUM CORPORATION

Wichita, Kansas

Scale 1:240 (5"=100') Imperial
Measured Depth Log

Well Name: MTPRC 'A' #3-27
Location: Sec. 27 - T30S - R19W, Kiowa County, KS
License Number: API # 15-097-21803-00-00
Spud Date: 08-14-2014
Surface Coordinates: 50'S of C N2 NE
710' FNL & 1320' FEL
Region: Alford South
Drilling Completed: 08-22-2014
Bottom Hole Coordinates:
Ground Elevation (ft): 2238' K.B. Elevation (ft): 2251'
Logged Interval (ft): 650' To: 5224' Total Depth (ft): 5225' RTD 5224' LTD
Formation: Mississippian
Type of Drilling Fluid: Chemical/Polymer/Gel

Printed by MUD.LOG from WellSight Systems 1-800-447-1534 www.WellSight.com

OPERATOR

Company: McCoy Petroleum Corporation, KCC License #5003
Address: 9342 E Central
Wichita, KS 67206

GEOLOGIST

Name: Zach Wiele
Company: McCoy Petroleum Corporation
Address: 9342 E. Central
Wichita, KS 67206

CASING & DEVIATION SURVEYS:

Spud at 11:00 pm on 08/14/14.

13-3/8" Casing String:

Drilled 17-1/2" hole to 263'. Ran 6 joints of 47# ; 13-3/8" surface casing. Tallied 243.75', set at 263.25' KB. Cut Texas shoe. Strapped bottom 3 joints. Tacked collars & pins. Cemented with 250 sks 60/40 POZ; 2% Gel; 3% CC; 1/4# CF. Cement did not circulate. Plug down at 5:50 am on 08/15/14. Basic Energy Svcs Cementing ticket #10717.

8-5/8" Casing String:

Drilled 12-1/4" hole to 652'. Ran 15 joints of new 23# 8-5/8" surface casing. Tallied 633'. Landed at 652' KB. Strapped guide shoe and bottom 3 joints, tacked collars on all, then welded collar on top 2 joints. Basket at 295'. Cemented with 175 sks ACON; 2% Gel, 3% CC, 1/4# CF & tailed with 175 sks: 60/40 POZ; 3% CC, 1/4# CF. Cement did circulate. Plug down at 1:45 am on 08/16/14. Basic Energy Svcs Cementing ticket #05923.

DRILL STEM TEST

DST # 1 5086'-5131' 5" - 60" - 90" - 120"

IF: Strong blow . B.O.B. in 30 secs. ISI: No blow .

FF: Strong blow .B.O.B. in 10 secs. G.T.S. in 40 mins. Gauged gas. See gas report. FSI: No blow .

Recovery:

60' GOWCM (6%g 1%o 1%w 92%m)

20' Drlg Mud (100%m w /trc o trc w)

IH: 2615.94# IF: 38.74 - 45.01# ISIP: 1238.7# FF: 34.03 - 55.33# FSIP: 897.8# FH: 2579.45# BHT: 121 deg

FF Gauge:

50" = 26.02mcf 60" = 26.81mcf 70" - 90" = 27.60mcf

DST #2 5131' - 5146'

5" - 60" - 60" - 60"

IF: Weak Surf Blow 1/4" ISI: No Blw FF: No Blw FSI: No Blw

Recovery:

10' Mud (100% m)

IH: 2644.53# FH: 2478.71# IF: 14.53 - 16.35# ISIP: 1359.48# FF: 17.62 - 25.38# FSIP: 948.32# BHT: 118 deg

ROCK TYPES

LITHOLOGY

	Char-grn sh
	Anhy
	Bent
	Brec
	Cht
	Clyst
	Coal
	Dol
	Gyp
	Igne
	Lmst
	Mrlst
	Salt
	Shale
	Shcol

	Shgy
	Slst
	Ss
	Congl
	Blk carb sh
	Green sh
	Brn sh
	Red sh
	Gray shale

MINERAL

	Anhy
	Arggrn
	Arg
	Bent
	Bit

	Brecfrag
	Calc
	Carb
	Chtdk
	Chtlt
	Dol
	Feldspar
	Ferrpel
	Ferr
	Glau
	Gyp
	Hvymn
	Kaol
	Marl
	Minxl
	Nodule

	Phos
	Pyr
	Salt
	Sandy
	Silt
	Sil
	Sulphur
	Tuff

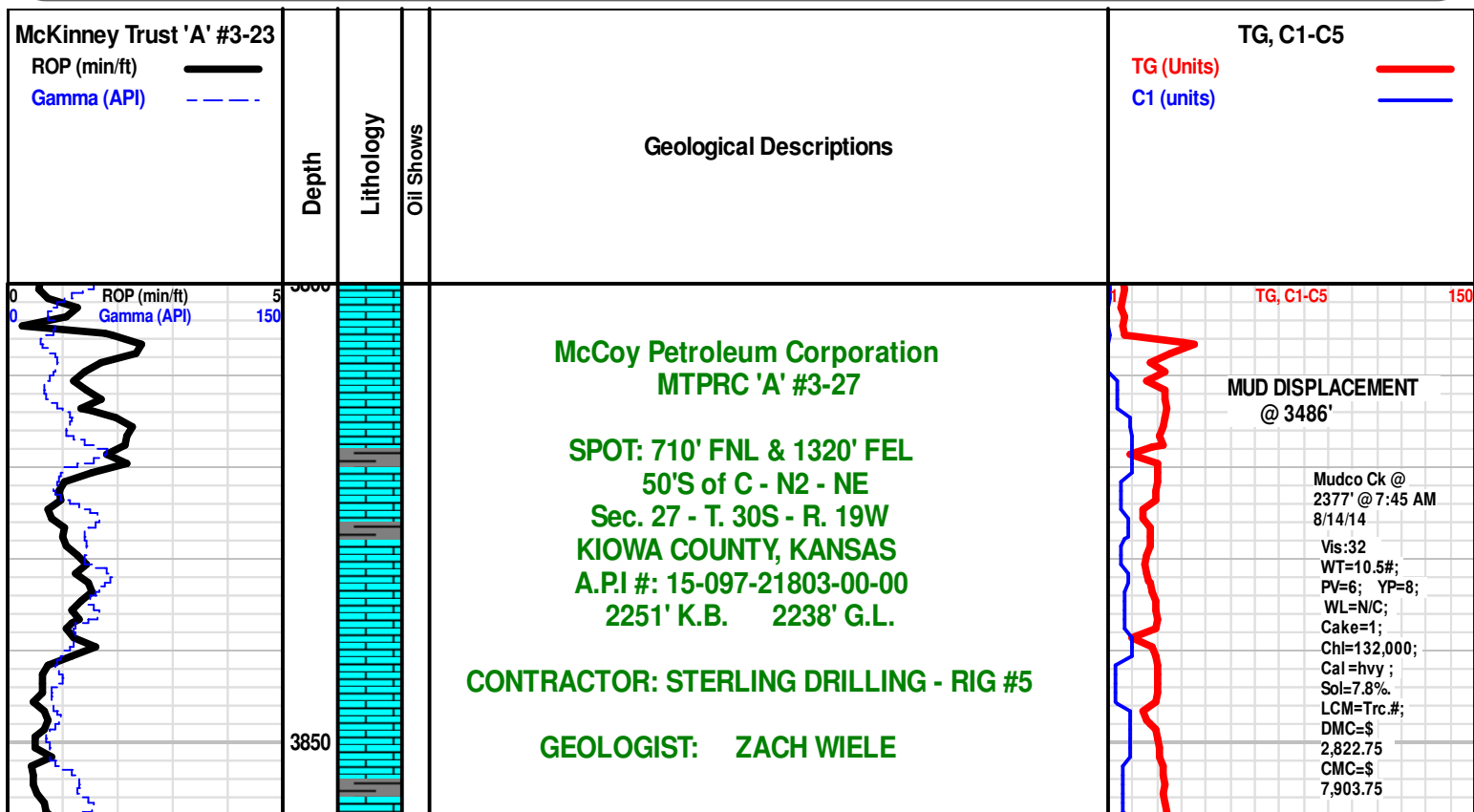
TEXTURE

	Boundst
	Chalky
	Cryxln
	Earthy
	Finexln
	Grainst

	Lithogr
	Microxln
	Mudst
	Packst
	Wackst

OIL SHOW

	Even
	Spotted
	Ques
	Gas
	Dead



Geologist on location @ 10:15 A.M. on 8/18/2014

Deviation Survey's Taken: @ 263' = 1/2 degree; @ 652' = 1/4 degree; @ 5131' = 1/4 degree

Note: Samples have been lagged to depth by calculated time.
Begin 30' Kelly Down Sample Examination @ 3930'

3900

Ls Wht-Crm-Lt Gry, Fn-Microxln micrite grad poor PP Inxln Por, foss, Sh Gry-Drk Gry-Grn, soft fiss silty, Pyr-Inclus, no odr, no flor, no stn, NS

W.O.B. = 16K
R.P.M. = 95+
S.P.M. = 67
P.S.I. = 1000
Vis: 47
WT: 8.8

3950

Ls Crm-Lt Gry, Fn-Microxln micrite grad poor-mod PP Inxln Por, foss, Sh Drk Gry-Red-Lt Grn, fiss soft, silty, no odr, no flor, no stn, NS

RR Work on Geolograph

Ls Gry-Tan-Crm, Fn-Microxln dns micrite grad to poor PP Inxln Por, foss-inclus, chlky w/sli Pyr-inclus, Sh Gry-Char-Grn, fiss silty, no odr, no flor, no stn, NS

Mudco Ck @
3982' @ 1:45 PM
8/19/14
Vis:52
WT=8.9#;
PV=18;
YP=16;
WL=8.8;
Cake=1;
Chl=6000;
Cal=40 ;
Sol=3.97%
LCM=Trc.#
DMC=\$
3,494.35
CMC=\$
11,398.10

Sh Char-Gry-Grn-Brn, soft, silty w/Scat Pyr-inclus, Ls Lt Gry-Gry-Crm, Micro-Fxln dns micrite, poor Inxln por, Foss(crin), no odr, no flor, no stn, NS

4000

Ls Gry-Crm-Wht, Fn-Microxln dns micrite, Foss-Inclus(crin), Sh Gry-Char, soft silty, no odr, no flor, no stn, NS

TG, C1-C5

LECOMPTON 'B' 4030' (-1779)

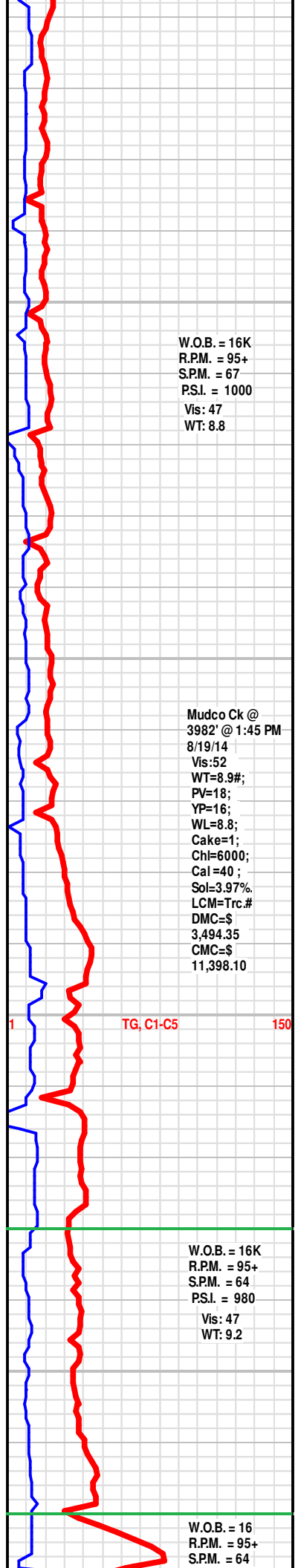
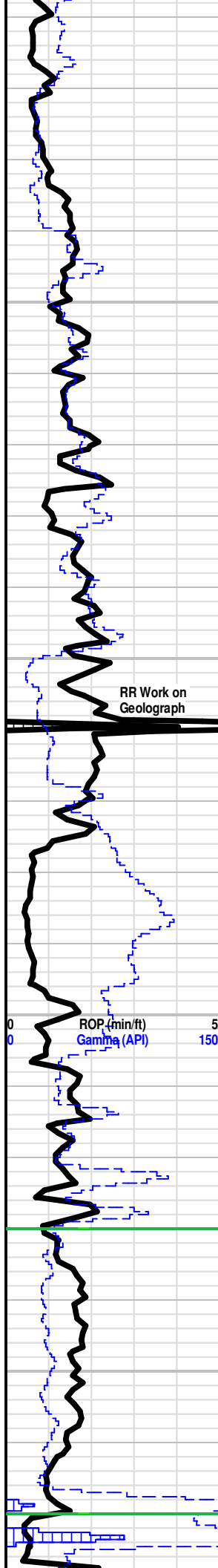
W.O.B. = 16K
R.P.M. = 95+
S.P.M. = 64
P.S.I. = 980
Vis: 47
WT: 9.2

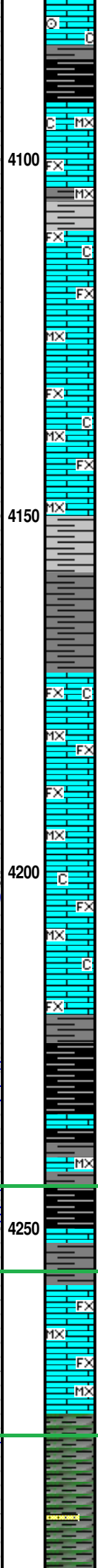
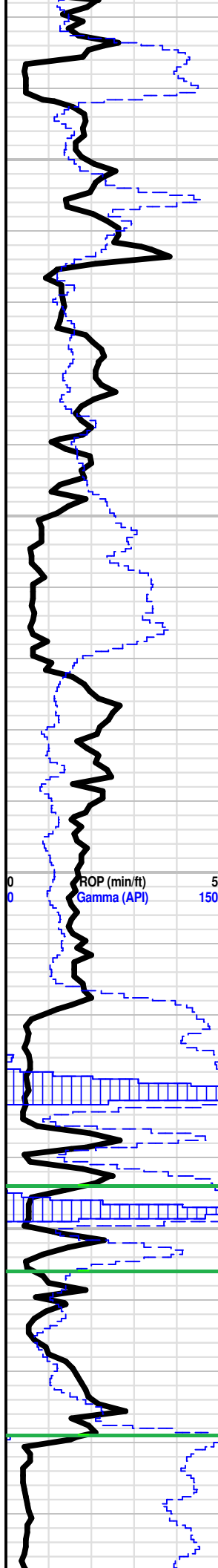
4050

Ls Wht-Gry, Fn-Microxln dns micrite, chlky, Sh Char-Gry-Aqua, soft silty, foss(crin) w/strks Pyr-Inclus, no odr, no flor, no stn, NS

QUEEN HILL 4070' (-1819)

W.O.B. = 16
R.P.M. = 95+
S.P.M. = 64





Sh Blk Carb-Gry-Aqua, soft fiss, Ls Wht-Crm-Gry, Fn-MicroIn micrite grad poor PP InIn Por, sli vug por, Chlky, Trc Foss(crin), no odr, no flor, no stn, NS

Ls Wht-Crm-Lt Gry, FxIn micrite grad vpoor PP InIn Por, chlky, Sh Blk Carb-Gry-Red, soft fiss w/scat Pyr-inclus, no odr, no flor, no stn, NS

Ls Crm-Wht-Lt Gry, Fn-MicroIn dns micrite, vpoor PP Por, chlky, Sh Gry-Drk Gry-Lt Grn, soft fiss, foss(Gastro), no odr, no flor, no stn, NS

Sh Drk Gry-Gry-Char, soft fiss w/Pyr-inclus, Ls Crm-Gry, Fn-MicroIn micrite grad poor InIn Por, chlky, Foss(fus), Mass Pyr, no odr, no flor, no stn, NS

Ls Crm-Lt Gry-Gry, vFn-MicroIn micrite grad poor PP InIn Por, chlky, Mass Pyr, Sh Char-Gry-Grn, soft fiss, sli silty, no odr, no flor, no stn, NS

Ls Wht-Gry, vFn-MicroIn micrite grad vpoor PP InIn Por, Chlky, scat Foss(crin), Sh Blk Carb(w/SGB)-Gry-Grn, fiss, Scat Chrt Wht-Op, no odr, no flor, no stn, NS

Sh Blk Carb(w/SGB)-Gry, fiss, LS Wht-Crm-Gry, Fn-MicroIn dns micrite grad poor PP InIn Por, Chlky, Scat Foss(crin), w/Pyr-inclus, Scat Chrt Wht Gry Op, no odr, no flor, no stn, NS

Ls Wht-Lt Gry-Crm, FxIn dns micrite, vpoor PP InIn Por, Chlky w/Pyr-inclus, Sh Gry-Char-Brn-Blk Carb, soft fiss, no odr, no flor, no stn, NS

Sh Blk Carb-Gry-Char-Brn-Grn, soft silty, Ls Wht-Crm-Gry, FxIn micrite grad poor PP InIn Por w/Pyr-Inclus, no odr, no flor, no stn, NS

HEEBNER 4244' (-1992)

TORONTO 4256' (-2005)

DOUGLAS 4279' (-2028)

PSI. = 1,000
 W.O.B. = 16
 R.P.M. = 95+
 S.P.M. = 64
 PSI. = 1,000
 Vis = 55
 WT = 9.1

W.O.B. = 16
 R.P.M. = 95+
 S.P.M. = 64
 PSI. = 1,000

W.O.B. = 16
 R.P.M. = 95+
 S.P.M. = 61
 PSI. = 985
 Vis = 60
 WT = 9.2

Pump Mtr Died

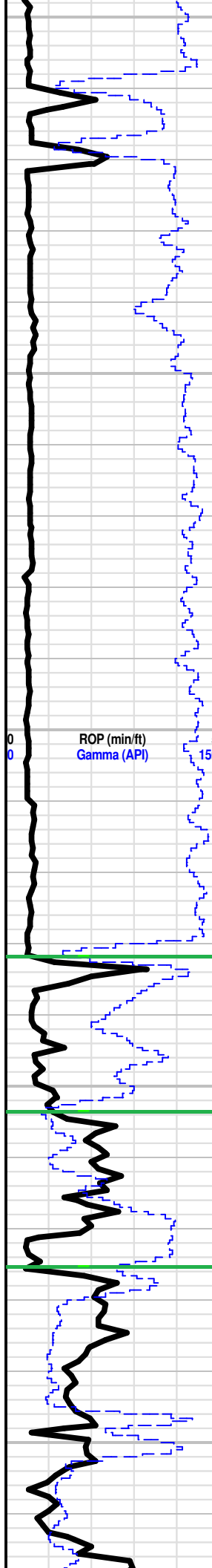
Scale Change
 TG, C1-C5 300

158 UNIT GAS KICK

116 UNIT GAS KICK

119 UNIT GAS KICK

4300
4350
4400
4450
4500



Sh Gry-Char-Brn-Grn, soft silty, Ls Crm-Tan, Fn-MicroIn micrite grad poor PP InxIn Por, Mass Pyr, Scat Qtz Ss Wht-Lt Gry, Fgrn, subang-subrnd, well sort w/CaCO3 matrix, fri, poor Ingrn Por, no odr, no flor, no stn, NS

Sh Gry-Brn-Char-Grn, soft silty, Ls Crm-Tan-Brn, FxIn micrite, dns grad poor InxIn PP Por, Trc Qtz Ss, Wht-Lt Gry AA, Scat Pyr-inclus, no odr, no flor, no stn, NS

Sh Gry-Char-Grn-Brn, soft silty, Ls Crm-Tan-Gry, FxIn micrite grad poor InxIn PP Por, Scat Qtz Ss Wht-Lt Gry, Fgrn, subang-subrnd, well sort w/CaCO3 matrix, poor Ingrn Por, fri, Mass Pyr(1 pc) no odr, no flor, no stn, NS

BROWN LIME 4432' (-2181)

Sh Gry-Lt Brn-Lt Grn-Char, fiss soft silty, Ls Tan-Lt Gry, Fn-MicroIn micrite, dns, Scat Qtz Ss AA, no odr, no flor, no stn, NS

LANSING 4454' (-2203)

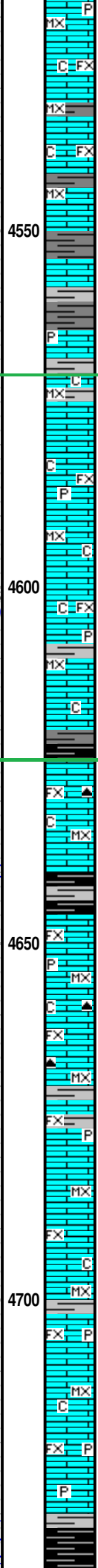
LANSING 'B' 4475' (-2224)

Ls Crm-Lt Gry-Gry, FxIn oolitic micrite grad poor InxIn PP Por, w/Pyr-inclus, Foss(crin), Sh Gry-Char, fiss soft, Mass Pyr, no odr, no flor, no stn, NS

Ls Wht-Crm-Gry-Brn, Fn-MicroIn micrite grad poor InxIn Por, w/Pyr-Inclus, Sh Gry-Lt Grn-Blk Carb-Char, no odr, no flor, no stn, NS

W.O.B. = 16
R.P.M. = 95+
S.P.M. = 61
P.S.I. = 985
Vis: 55
WT: 9.2

TG, C1-C5 300



Ls, Crm-Tan-Gry, Fn-MicroIn micrite, dns grad poor InxIn PP Por, Chlky, Sh Gry-Grn-Char), fiss soft, no odr, no flor, no stn, NS

LANSING 'F' 4570' (-2319)

Ls Crm-Wht, Fn-MicroIn grnr micrite, dns grad poor InxIn/Ingrn PP Por, Chlky, Chrt Gry-Op Shp, Sh Gry-Drk Gry-Brn, soft fiss, no odr, no flor, no stn, NS

Ls Crm-Wht-Tan-Lt Gry, Fn-MicroIn micrite, dns grad poor InxIn PP Por, Foss, Chlky, Chrt, Gry-Op, Shp, Sh Gry-Grn-Brn, soft, Mass Pyr, no odr, no flor, no stn, NS

KANSAS CITY 'H' 4624' (-2373)

Ls Wht-Lt Tan-Lt Gry, Fn-MicroIn micrite, poor InxIn Por, v chlky, Sh Gry-Grn-Blk Carb, soft, Chrt Tan Op, Shp, no odr, no flor, no stn, NS

Ls Crm-Wht-Tan, Micro-vFnxIn dns micrite, oolic in part w/poor-mod InxIn/Oomold Por, scat dis vugs, chlky w/Pyr-inclus, Chrt Gry Op Shp, Sh Gry-Grn-Blk Carb, soft fiss, no odr, no flor, no stn, NS

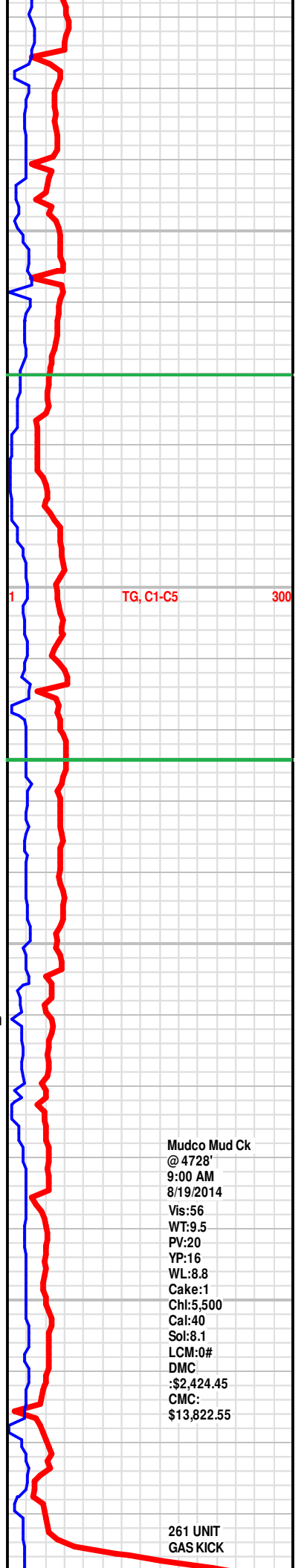
Ls Crm-Lt Brn-Lt Gry-Wht, Micro-FnxIn micrite w/Foss inclus(crin), Few w/poor InxIn/Foss Por, dis vugs, Chlky, Pyr-inclus, Sh Gry-Drk Gry-Blk Carb, soft fiss, no odr, no flor, no stn, NS

Begin 10' Sample Examination @ 4740'

Ls Wht-Crm-Lt Tan, vFn-MicroIn micrite grad poor PP InxIn Por, Chlky, Few Pc w/poor InxIn/Vug Por, Chrt Wht-Lt Tan-Gry, Shp, Sh Gry-Drk Gry-Grn, soft fiss, Foss(crin), Scat Pyr-inclus, no odr, no flor, no stn, NS

Ls Wht-Crm-Gry-Brn, Micro-FnxIn micrite grad poor InxIn Por(few), Chlky, Chrt Trans Wht Gry Op, Sh Gry-Blk Carb, fiss, no odr, no flor, no stn, NS

Sh Blk Carb(w/SGB), Gry-Grn, fiss w/Pyr-inclus, Ls Wht-Crm-Tan, Micro-FxIn dns micrite, Chlky, Chrt AA, no odr, no flor, no stn, NS



TG, C1-C5 300

Mudco Mud Ck
 @ 4728'
 9:00 AM
 8/19/2014
 Vis:56
 WT:9.5
 PV:20
 YP:16
 WL:8.8
 Cake:1
 Chl:5,500
 Cal:40
 Sol:8.1
 LCM:0#
 DMC
 :\$2,424.45
 CMC:
 \$13,822.55

261 UNIT
 GAS KICK

KANSAS CITY 'J' 4742' (-2491)

Sh Blk Carb(w/SGB)-Gry, fiss, Ls Wht-Crm-Lt Gry, Micro-FxnIn micrite, sli grnurl, 1 pc w/good InxIn/Oomold vug Por, Chlky, Chrt Wht Trans Op, Foss(crin), no odr, no flor, no stn, NS

Ls Crm-Wht-Lt Gry, MicroxIn dns micrite, no vis por, Chlky, Chrt Gry Op Shp, Sh Blk Carb-Gry-Grn, fiss, soft, sli silty, Mass Pyr, no odr, no flor, no stn, NS

Ls Crm-Wht-Gry, Micro-FxnIn dns micrite, Chlky, Chrt Wht Trans Op Shp, Foss(crin), Sh Blk Carb-Gry-Aqua, fiss w/Pyr-inclus, no odr, no flor, no stn, NS

Ls Wht-Crm-Gry, Micro-FxnIn micrite grad poor PP Por, 1 pc oolitic w/poor dis vugs, foss, Chrt Wht-Lt Gray Op Shp, Sh Blk Carb-Gry-Grn, fiss soft w/Pyr-inclus, no odr, no flor, no stn, NS

Sh Blk Carb(w/SG)-Char-Lt Gry-Grn-Lt Brn, fiss, sli silty, Ls Tan-Gry-Crm, FxnIn, dns grad poor InxIn Por, Foss, Pyr-inclus, Chrt AA, no odr, no flor, no stn, NS

STARK 4784' (-2533)

Sh Blk Carb(w/SG)-Char-Gry-Brn-Grn, fiss, Ls Crm-Wht-Gry, Fn-MicroxIn micrite, Poor InxIn PP Por, no odr, no flor, no stn, NS

Ls Lt Tan-Lt Gry-Wht, Fn-MicroxIn dns micrite w/Trc poor PP InxIn Por, Chlky, Sh Blk Carb-Gry-Brn, fiss, silty, Chrt Wht-Gry Op Shp, no odr, no flor, no stn, NS

Ls Wht-Lt Gry-Lt Tan, Micro-FxnIn dns micrite, vpoor InxIn PP Por-no vis Por, w/Pyr-inclus, Sh Gry-Brn-Blk Carb, fiss soft, Chrt Wht-Lt Gry Op Shp, no odr, no flor, no stn, NS

Sh Gry-Blk Carb, fiss soft, Ls Gry-Wht, FxnIn dns micrite, Chlky, Chrt Tan, foss inclus, trc Pyr-inclus, no odr, no flor, no stn, NS

HUSHPUCKNEY 4832' (-2581)

Sh Blk Carb-Gry-Brn-Aqua, fiss soft, Ls Crm-Wht-Lt Tan-Gry, FxnIn micrite grad poor InxIn Por, Chlky, no odr, no flor, no stn, NS

Ls Wht-Gry-Tan, Fn-MicroxIn micrite grad poor PP InxIn Por, Chlk, Foss, Sh Gry-Blk Carb-Grn, fiss, no odr, no flor, no stn, NS

Ls Crm-Gry-Brn, FxnIn micrite, dns grad poor InxIn Por w/scat poor-mod Vug/Frac Por, Chlky, Sh Blk Carb-Gry-Brn, fiss soft, Trc Chrt, Wht-Lt Gry, foss inclus, no odr, no flor, no stn, NS

Sh Gry-Blk Carb(w/ssGB)-Aqua, soft fiss, sli silty, Ls Crm-Gry-Lt Brn, FxnIn micrite grad poor-mod PP InxIn Por w/dis vugs, Chlky, no odr, no flor, no stn, NS

Ls Gry-Crm-Tan, FxnIn micrite, poor PP InxIn Por, Chlky, Sh Gry-Grn-Blk Carb, fiss, trc Pyr-inclus, no odr, no flor, no stn, NS

Sh Drk Gry-Gry-Blk Carb, fiss, Ls Crm-Tan-Gry, Micro-FxnIn dns micrite grad Poor InxIn PP Por, Foss, Pyr-inclus, no odr, no flor, no stn, NS

Sh Gry-Brn-Grn-Blk Carb, soft fiss, Ls Lt Tan-Wht-Gry, Micro-vFxnIn micrite, dns, Sct Chrt, Wht Tan Op, no odr, no flor, no stn, NS

Ls Crm-Gry-Lt Brn, Fn-vFxnIn micrite w/foss inclus grad poor InxIn Por, Mass Pry, Sh Gry-Grn-Red-Blk Carb, fiss soft, no odr, no flor, no stn, NS

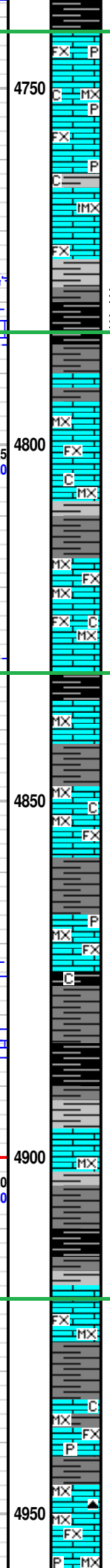
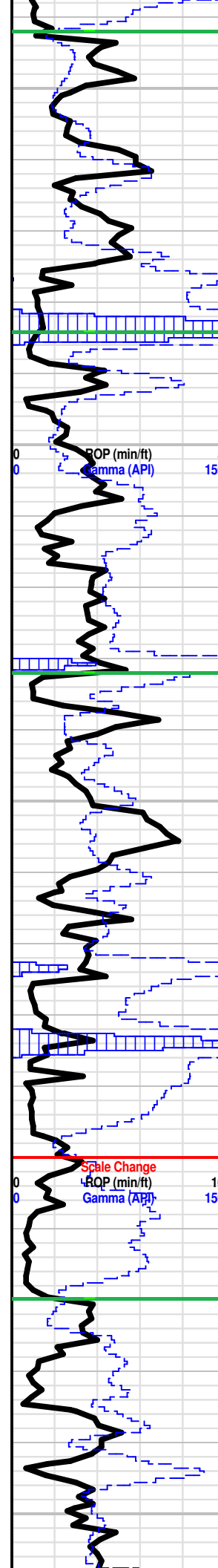
MARMATON 'B' 4920' (-2669)

Ls Wht-Lt Gry-Lt Tan, Micro-FxnIn dns micrite, Sli trc poor PP InxIn Por, Sh Gry-Grn-Red-Blk Carb, fiss, silty, Chrt Gry-Brn Op, foss, no odr, no flor, no stn, NS

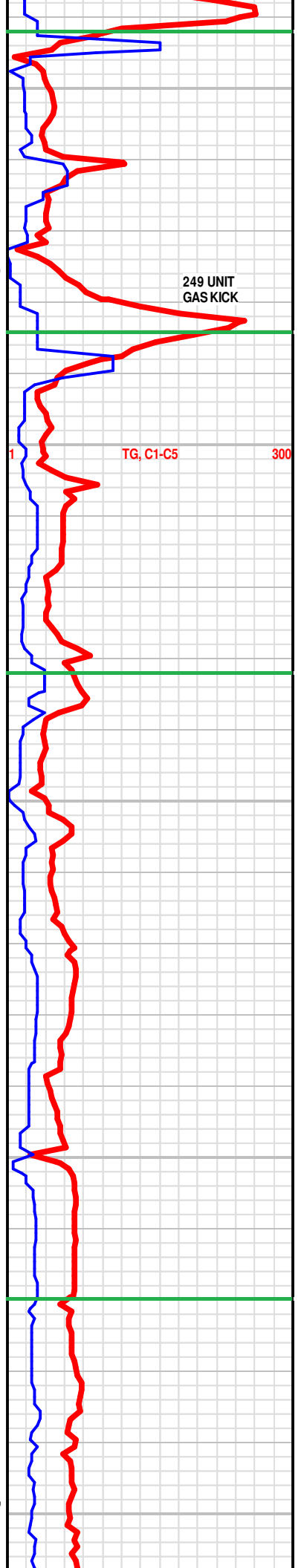
Ls Lt Tan-Crm-Wht, Fn-MicroxIn micrite w/inbed Chrt, Chlky, Chrt Tan Wht Op(abd), Foss, Sh Gry-Aqua-Brn Red-Blk Carb, soft fiss w/Pyr-inclus, no odr, no flor, no stn, NS

Ls Lt Tan-Crm, Micro-FxnIn dns micrite, Chlky, Sh Blk Carb-Gry-Aqua, fiss, Chrt Tan Wht Trans Op Shp, no odr, no flor, no stn, NS

Ls Tan-Crm-Wht, Micro-FxnIn micrite grad poor InxIn Por, Foss(crin), Chlky, Sh



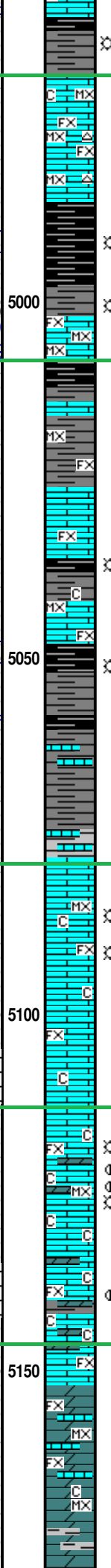
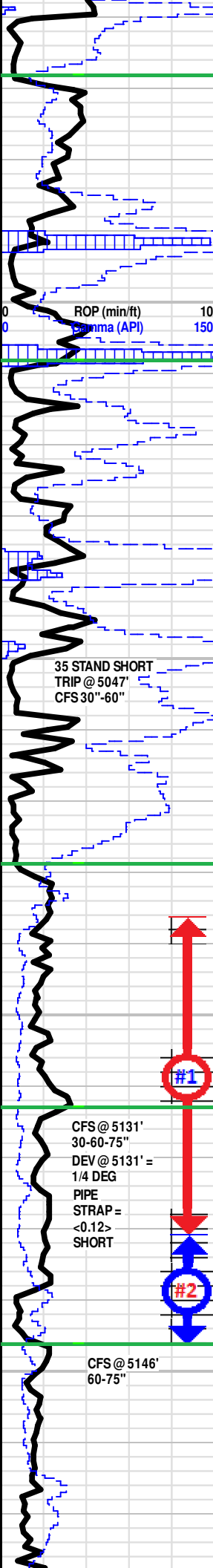
Descriptive text for each geological unit, detailing lithology, porosity, and other characteristics.



249 UNIT GASKICK

TG, C1-C5

300



Sh Tan-Crm-Wht, Micro-Fxn micrite grad poor Inxln Por, Foss(crin), Chlky, Sh Gry-Aqua-Red-Blk Carb, w/Pry-Inclus, Chrt AA, no odr, no flor, no stn, NS

Sh Blk Carb(w/SG)-Char-Grn-Aqua, fiss, silty w/Pyr-inclus, Ls AA, no odr, no flor, no stn, NS

PAWNEE 4968' (-2717)

Ls Crm-Wht, Micro-vFxn dns micrite, few w/poor PP Inxln Por, Sh Blk Carb-Gry, soft fiss, no odr, no flor, no stn, NS

Ls Wht-Crm-Lt Gry, Micro-Fxn dns micrite, Sli trc poor Inxln PP Por, Chlky, foss(crin), Sh Gry-Aqua-Brn Red-Blk Carb, soft fiss, Trc Chrt, no odr, no flor, no stn, NS

Sh Blk Carb(w/SG)-Gry-Brn-Aqua, fiss soft w/Pyr-inclus, silty, Ls Wht-Lt Gry, Micro-vFxn micrite, dns grad Por PP Por, Chlky, no odr, no flor, no stn, NS

Sh Blk Carb-Char-Gry, soft fiss, Ls Wht-Crm, Micro-Fxn micrite, dns, Chlky, Mass Pyr, no odr, no flor, no stn, NS

Sh Blk Carb(w/SG)-Gry, fiss soft, Ls Tan-Crm-Wht, Micro-Fxn micrite, dns, Chlky, Chrt Tan Crm Op, no odr, no flor, no stn, NS

CHEROKEE 5008' (-2757)

Sh Blk Car-Char-Gry, fiss, silty w/Pyr-inclus, Ls Lt Gry-Tan, Micro-Fxn micrite, foss, Chrt, Wht Crm Op Shp, no odr, no flor, no stn, NS

Sh Gry-Grn-Char-Blk Carb, fiss soft with Pyr-inclus, Ls Tan-Wht-Gry, Fxn micrite, dns grad poor Pin-Pt Inxln Por, Mas Pyr, scat Chrt Tan Op, no odr, no flor, no stn, NS

30" CFS @ 5047' Sh Blk Carb-Gry(w/SG)-Lt Gry-Lt Grn, fiss soft w/Pyr, foss(crin), Ls Lt Tan-Wht, Micro-Fxn micrite grad poor PP Inxln Por, no odr, no flor, no stn, NS

60" CFS @ 5047' Sh Blk Carb-Gry(w/SG)-Lt Gry-Lt Grn, fiss soft w/Pyr, foss(crin), Ls Lt Tan-Wht, Micro-Fxn micrite grad poor PP Inxln Por, no odr, no flor, no stn, NS

Sh Blk Carb-Gry-Brn-Aqua-Oliv, fiss soft silty, Pyr-inclus, Ls Tan-Wht, Micro-Fxn micrite grad poor PP Inxln Por, Chlky, foss, Chrt Gry-Tan-Wht Op, Shp, no odr, no flor, no stn, NS

Sh Gry-Grn-Aqua-Oliv-Blk Carb, fiss soft w/Pyr-Inclus, Ls Tan-Wht, Micro-Fxn dns micrite, poor PP Inxln Por, w/Pry-inclus, Chlky, no odr, no flor, no stn, NS

MISSISSIPPIAN 5079' (-2828)

Ls Wht-Crm-Lt Gry, Micro-Fxn micrite grad poor-mod Pin-Pt Inxln Por, Foss, Chlky, Sli Trc fair-good Pin-Pt Inxln/Vug Por w/SGB, Few w/Drk gil stn, Sh Gry-Grn-Aqua-Oliv, fiss soft, Chrt Wht-Peach Op, Shp, v fnt odr, sli flor wht-grn(4 pc), no stn, Sli SG

Ls Wht-Lt Tan, vFxn-Fxn micrite, poor-mod Pin-Pt Inxln Por, Chlky, Dolomitic in part w/gil stn, brittle, Sh Vaircolor AA, Chrt, foss(crin), Pyr, fair odr, scat grn-wht flor, trc lt brn stn, Sli SG

Ls, Wht-Crm-Tan, Micro-Fxn micrite grad poor-fair Pin-Pt Inxln Por, w/gil stn, Chlky, fnt-mod odr, sct flor, lt brn-drk gil stn, Sli SG

SPERGEN POR 5113' (-2862)

30" CFS @ 5131' Ls/Dol Crm-Tan-Lt Gry, Micro-Fxn, poor-fair Pin-Pt Inxln Por, brittle, fair odr, scat grn-wht flor, Blk Gil-Lt Brn stn, Sli SG, Chlk(abd), trc gluc inclus, Sh Gry-Grn-Oliv, soft fiss

60" CFS @ 5131' Dol/Ls Crm-Tan-Lt Gry, Micro-Fxn, poor-fair-good Pin-Pt Inxln/Vug Por, sucr, good odr, grn-wht-dull flor(abd), Scat Lt Brn stn, Blk Gil Stn, fair SGB, Few spts FO(aft 10%HCl, Lt Brn-Clear)

75" CFS @ 5131' Dol/Ls, Crm-Tan-Gry, Fxn micrite, dns grad fair-good Pin-Pt Inxln/Vug Por, Chlky, Trc gluc inclus, mod odr, med flor, Sct Lt Brn Stn, Blk Gil stn, SGB

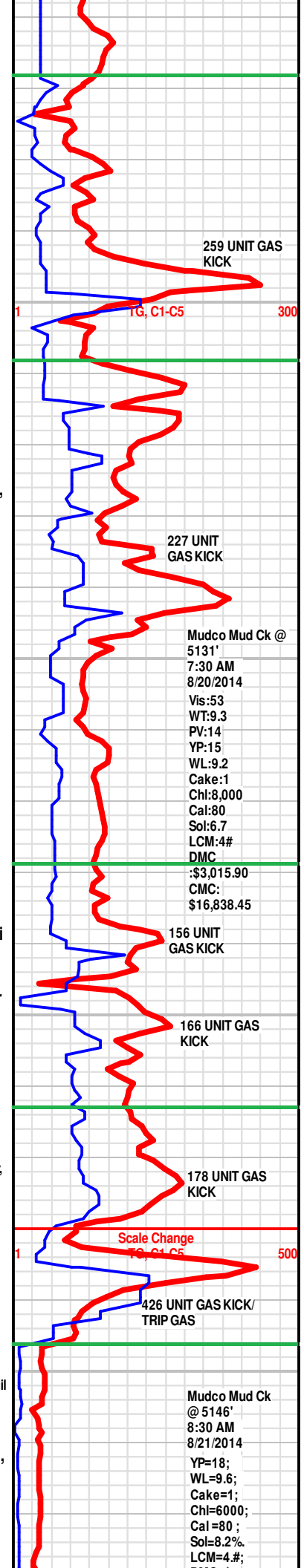
60" CFS @ 5146' Ls Lt Gry-Crm-Tan, Fxn micrite grad fair-good Pin-Pt sucr Por w/1 Spt vLt Brn FO(abd afr HCl, wht stream slw-mod bright cut) brittle grad Dol Ls w/fair-gd Inxln/Vug sucr Por w/lt brn stn(wht stream fast bright cut), mod musky odr, spt-sat grn flor(5%), strk lt brn stn, Chlky, Chrt Gry-Tan Trip, Sh Gry-Grn

WARSAW 5146' (-2895)

75" CFS @ 5146' Dol/Ls, Lt Gry-Crm-Tan, Fxn micrite grad poor-fair Pin-Pt Inxln Por, w/few scat good Inxln/Vug Por(sli gluc inclus), w/grn Flor <7 pc(wht strimg vry slow bright cut), gil stn blk residue w/spty brn stn, faint grad to musky odr, chlky, Chrt AA w/foss(fus), Sh Gry-Brn-Grn, Pyr Mass

Dol Gry-Lt Gry-Crm, Fxn-microxln, poor-fair PP Inxln Por, foss, gluc inclus, Chrt Brn-Wht-Orng Trns Op, Sh Drk Gry-Gry-Brn-Grn-Oliv, fiss Pyr-inclus, Ls Tan, mxln dns micrite, no odr, scat flor & stn(frm abv), NS

Dol Gry-Crm, Fn-Microxln micrite grad poor-fair PP Inxln Por, Foss w/gluc & Pvr-inclus. Chrt Gry-Wht Trans Op Shp. foss(crin.fus) Sh



ROP (min/ft)
Gamma (API)

35 STAND SHORT
TRIP @ 5047'
CFS 30"-60"

CFS @ 5131'
30-60-75"
DEV @ 5131' =
1/4 DEG
PIPE
STRAP =
<0.12>
SHORT

CFS @ 5146'
60-75"

259 UNIT GAS
KICK

227 UNIT
GAS KICK

Mudco Mud Ck @
5131'
7:30 AM
8/20/2014
Vis:53
WT:9.3
PV:14
YP:15
WL:9.2
Cake:1
Chl:8,000
Cal:80
Sol:6.7
LCM:4#
DMC
:\$3,015.90
CMC:
\$16,838.45

156 UNIT
GAS KICK

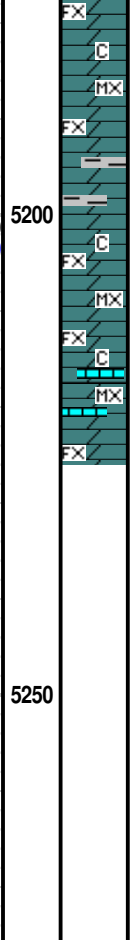
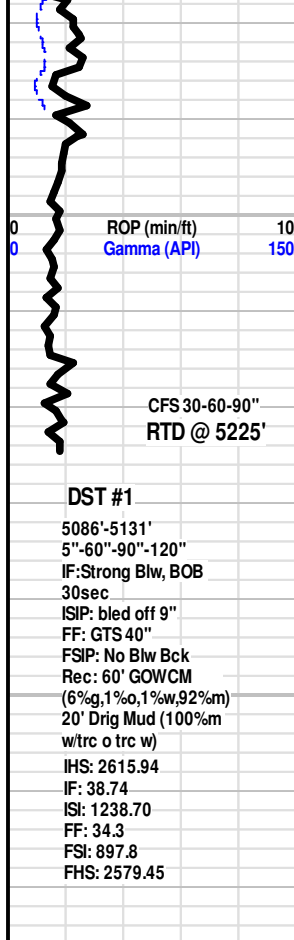
166 UNIT GAS
KICK

178 UNIT GAS
KICK

Scale Change
TG, C1-C5

426 UNIT GAS KICK/
TRIP GAS

Mudco Mud Ck
@ 5146'
8:30 AM
8/21/2014
YP=18;
WL=9.6;
Cake=1;
Chl=6000;
Cal=80;
Sol=8.2%
LCM=4.#;



Gry-Aqua-Marn, fiss, Pyr, no odr, trc flor(frm abv),trc lt brn stn, NS

Dol, Gry-Lt Gry, Fn-Microxln micrite grad poor PP Inxln Por, Trc gluc & Pyr-inclus, Sh Gry-Drk Gry Grn, fiss, Chrt Gry Trans Op Shp, foss(crin), Mass Pyr, Ls Tan, microxln dns micrite, no odr, no flor, no stn, NS

Dol Gry, Micro-Fxln dns micrite,sli CaCo3,Sh Gry-Drk Gry, soft fiss silty, Trc Chrt Brn-Tan-Drk Gry Op, no odr, no flor, no stn, NS

30" CFS @ 5225' Dol Gry-Lt Gry-Wht, Micro-Fxln dns micrite grad poor Inxln Por, foss- chrt inclus w/CaCO3,trc gluc, Mass Pyr, Sh Gry, fiss, no odr, no stn, no flor, NS

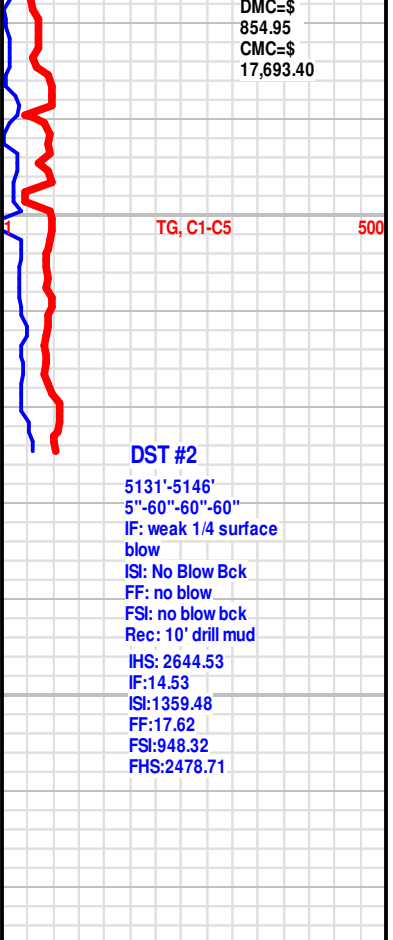
60" CFS @ 5225' Dol Gry-Lt Gry-Wht, Micro-Fxln micrite grad poor-mod PP Inxln Por, foss w/Calc & Chrt inclus, trc gluc, Chrt Gry-Wht Trns Op Sh Gry-Lt Grn, fiss w/Pyr inclus, no odr, no flor, no stn, NS

90" CFS @ 5225' Dol Gry-Crm-Wht, Fn-Microxln, poor-mod PP Inxln Por, foss,trc gluc, Ls Lt Tan-Tan, Microxln dns micrite, Sh Gry-Grn-Aqua-Marn, fiss,Pyr-Inclus, Chrt Gry-Wht Trans Op, foss,(crin) no odr, no stn, no flor, NS

RTD @ 5225' (-2974)
LTD @ 5224' (-2973)

Logging Company: Weatherford
Electric Logs Ran: Dual Induction, Compensated Density-Neutron, & Microresisitvity Logs.

Geologist Left Location @ 12:45 AM on 08/22/2014



DMC=\$
854.95
CMC=\$
17,693.40