

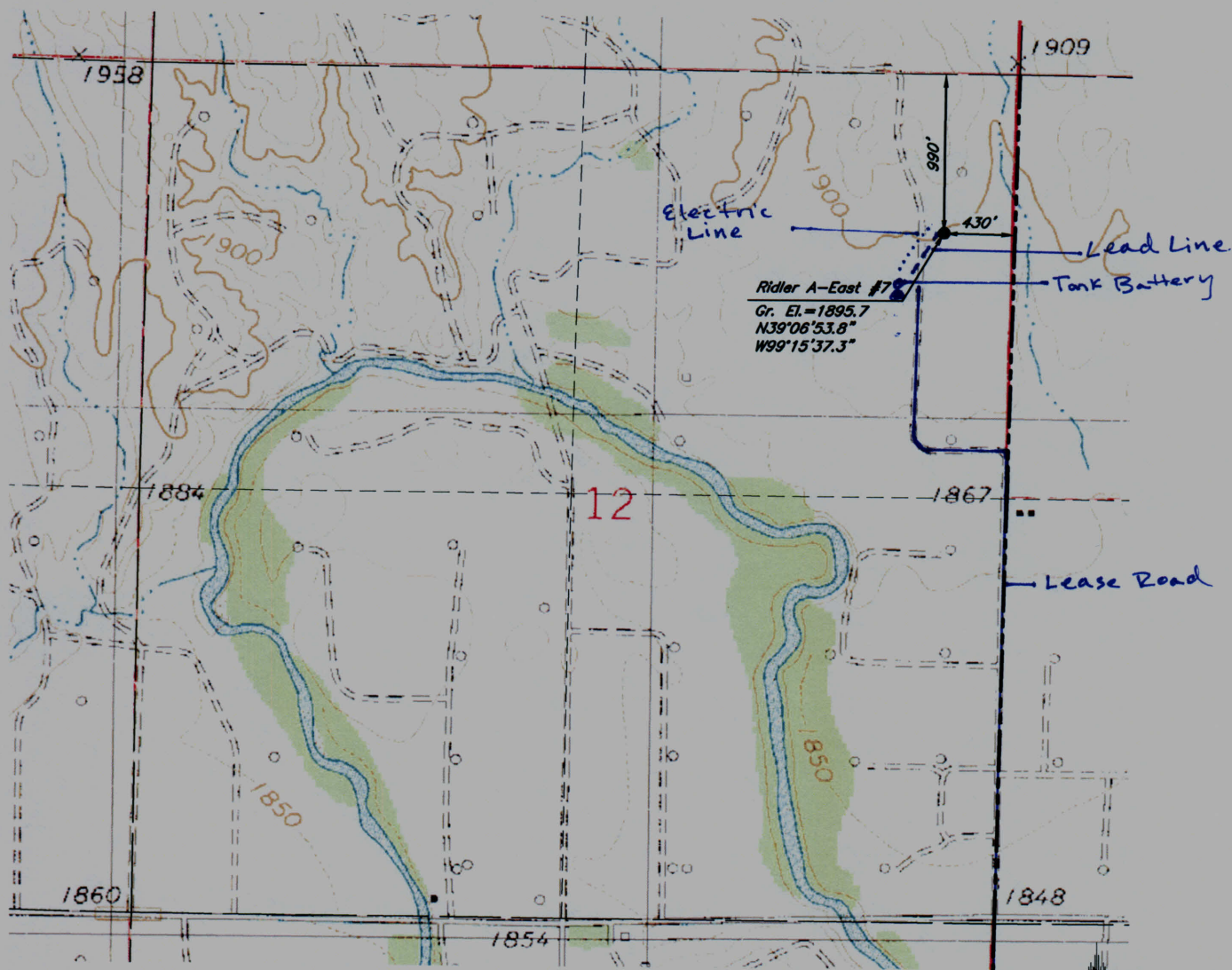
PENCO ENGINEERING, P.A.
P.O. BOX 392
PLAINVILLE, KS 67663
(785) 434-4611

SE 1/4, NE 1/4, NE 1/4, Section 12, T11S, R18W
LOCATION

October 20, 2014
DATE

Ridler A-East #7
LEASE LOCATION NO.

Ellis
COUNTY



Elevations based on NGS Benchmark E 158 Reset.
Standard disk located on the south hub guard of the Saline River bridge on
U.S. Hwy. 183. NAVD 88 Sea Level Elevation= 1905.80 feet.

This Survey does not constitute a boundary survey. Section corners were not found or set.
Physical evidence was used to approximate the location of the section corners.

Scale: 1" = 1000'