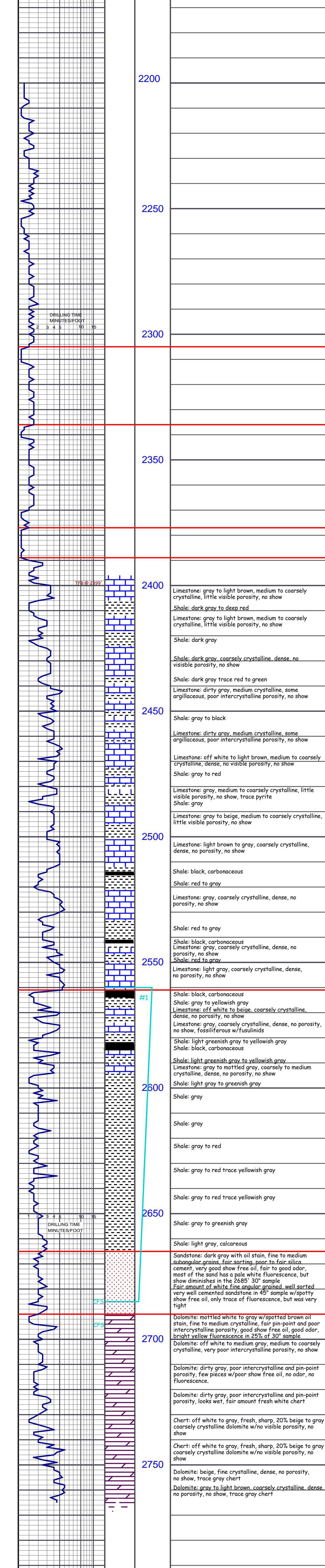


COMPANY	BOP West, LLC	ELEVATION	K.B. 1320
LEASE	Harbin #3	D.F.	
FIELD	Hunter North	G.L.	1311
LOCATION	2,160 FNL & 330 FEL	DEPTH MEASURED FROM NB	
SEC.	7 TWP 16S RGE 1W	Log	Drilling <input checked="" type="checkbox"/>
COUNTRY	Saline STATE Kansas	Surface	8.5% @ 230' w/125sk
CONTRACTOR	C&G Drilling, Rig #2	Production	5.1% @ 2758' w/100sk
SPUD	10-7-14 COMP 10-12-14	Electric Logs	
SAMPLES SAVED FROM	2400' TO RTD	CNP/LDT/INST/PT	
FORMATION	SAMPLE	E LOG	DATUM
Headliner		A. ELOG	B. ELOG
Douglas		-514	-510
Brown		-544	-538
Leaning		-664	-658
Shark		-727	-716
Hushpuckney		-886	-878
BKC		-1017	-1011
Marmaton		-1056	-1053
Cherokee		-1299	-1298
Mississippian		-1342	-1337
Missourian		-1382	-1373
RTD		-1441	-1394



**Legend:**  
 SHALE (Dotted pattern)  
 SANDSTONE (Horizontal lines)  
 LIMESTONE (Vertical lines)  
 DOLOMITE (Diagonal lines)  
 HALITE (Square pattern)  
 ANHYDRITE/GYPSUM (Wavy pattern)

**Photomicrographs:**  
 2670' x17  
 2680' x12  
 2680' x14  
 2685' x21  
 2685' 15" x12  
 2685' 30" x15  
 2694' 30" x23  
 2720' x20

**Formation Test No. 1**  
 Interval Tested from 2560 ft. to 2685 ft. Total Depth 2685 ft.  
 Packer Depth 2555 ft. Size 6 3/4 in. Packer depth 2560 ft. Size 6 3/4 in.  
 Blow: 1st Open: 3/4" Blow (BOB in 22 mins) NOBB  
 2nd Open: 1/4" Blow (BOB in 33 mins) NOBB  
 Recovered 15 ft. of GIP  
 Recovered 15 ft. of O 100% O 36 Gravity @ 60 Deg  
 Recovered 332 ft. of G w/ HOM 6% G 37% O 57% M  
 Recovered 347 ft. of Total Fluid  
 Price Job  
 Other Charges  
 Insurance  
 Total

**BOP West, LLC**  
**Harbin #3**  
**2,160 FNL & 330' FEL 7-16S-1W**  
**Saline County, Kansas**



**Comments:**

Formation Test No.	1	Interval Tested from	2560 ft. to	2685 ft.	Total Depth	2685 ft.
Packer Depth	2555 ft.	Size	6 3/4 in.	Packer depth	2560 ft.	Size 6 3/4 in.
Blow:	1st Open: 3/4" Blow (BOB in 22 mins)	NOBB				
	2nd Open: 1/4" Blow (BOB in 33 mins)	NOBB				
Recovered	15 ft. of GIP					
Recovered	15 ft. of O 100% O	36 Gravity @ 60 Deg				
Recovered	332 ft. of G w/ HOM	6% G 37% O 57% M				
Recovered	347 ft. of Total Fluid					
Recovered	ft. of					
Recovered	ft. of					
Remarks:	Tool Sample:	10% G 30% O 60% M				

Time Set Packer(s)	9:36 AM A.M.	Time Started Off Bottom	12:36 PM A.M.	Maximum Temperature	101 P.M.
Initial Flow Period	30 (A)	1219 P.S.I.			
Initial Hydrostatic Pressure	Minutes	30 (B)	17 P.S.I. to (C)	102 P.S.I.	
Initial Closed In Period	Minutes	45 (D)	420 P.S.I.		
Final Flow Period	Minutes	45 (E)	112 P.S.I. to (F)	160 P.S.I.	
Final Closed In Period	Minutes	60 (G)	383 P.S.I.		
Final Hydrostatic Pressure	(H)	1218 P.S.I.			

BOP West LLC Harbin 3  
 Dst 1 Burgiff Sand (2560-2685) Formation: Dst 1 Burgiff Sand (2560-2685)  
 Start Test Date: 2014/10/10 Pool: Infield  
 Final Test Date: 2014/10/10 Job Number: RR097

