

HEADER

WellSight Systems

Scale 1:240 [5"=100'] Imperial

Measured Depth Log

Well Name: #1 FRANCE
Location: sec 10 - twp 17S - rge 35W WICHITA COUNTY
License Number: 14A IUG 2014
Surface Coordinates: 1,720' FSL & 1,335' FEL
Bottom Hole Coordinates: 70' N & 15' W of S2 - N2 - SE

Spud Date: 2014
Drilling Region: KANSAS
Completion Date: 25 AUG 2014
Formation: COUNCIL GROVE to MISSISSIPPIAN

Company: Ritchie Exploration, Inc.
Address: P.O. Box 783188
Wichita, Kansas 67278-3188

Geologist: Ted Jochems, Jr.
Company: Consulting Geologist
Address: 212 North Market ste 517
Wichita, Kansas 67202

Contractor: W W Drilling, rig #2 (topusher Lonnie Lang)
MUD: Mud-Co (Tony Maestas)
DRILL STEM TESTS: Trilio (Bradson Turley)
ELECTRIC LOGS: Nabors Services (Jeff Luebbers)

CDL - CNL
CDL - 253
SURFACE CASING: 8.625"
HOLE PLUGGED AND ABANDONED: 26 AUG 2014

DAILY PENETRATION table with columns: DATE, DEPTH, SPOD, WOC, hours

DRILL STEM TEST #1
30 - 30 - 30 OREAD to TORONTO
IFP: surface blow built to 0.25" / 30 min
ISIP: no return
FFP: surface blow built to 0.25" / 30 min

DRILL STEM TEST #2
30 - 45 - 45 - 60 LKG A - C - D zones
IFP: 0.25" blow built to 4" / 30 min
ISIP: no return
FFP: surface blow built to 5" / 45 min

DRILL STEM TEST #3
30 - 30 - 30 LK1 I zone
IFP: surface blow died / 5 min
ISIP: no return
FFP: no blow: flushed too

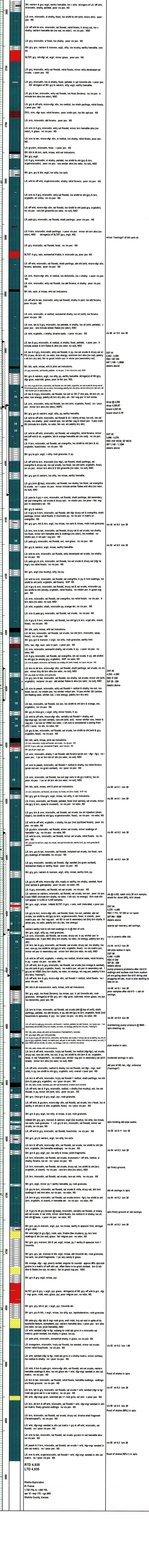
DRILL STEM TEST #4
30 - 30 - 30 PLEASANTON - MARMATON - ALTAMONT 'A' zone
IFP: surface blow died / 8 min
ISIP: no return
FFP: no blow: flushed too

DRILL STEM TEST #5
30 - 30 - 30 ALTAMONT B & C zones
IFP: surface blow died / 3 min
ISIP: no return
FFP: no blow: flushed too

MUD REPORT table with columns: depth, WIT, pH, PV, VELS, CHLOR, SOLIDS, BU

ROCK TYPES legend with categories: Anyth, Bent, Bre, Cht, Cyst, Coal, Congl, Dol, Gyp, Igne, Lmst, Meta, Mrst, Salt, Shale, Shcol, Shgy, Shst, Ss, Tili

OIL SHOW legend with categories: Even, Spotted, Ques, Dead, Gas, INTERVAL, Core, Dst, EVENT, Conn, RT, Sidewall



RTD 4,935
LTD 4,935
Ritchie Exploration
#1 France
sec 10 - twp 17S - rge 35W
Wichita County, Kansas