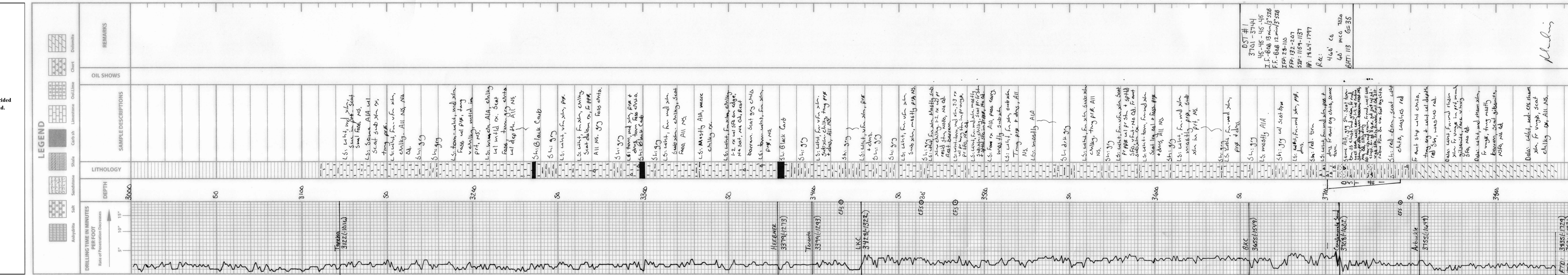


Marc A. Downing Consulting Petroleum Geologist		Geologic Report Drilling Time and Sample Log			
Operator Downings-Nelson Oil Co., Inc.		Elevation KB 2106 DF 2104 GL 2098		Casing Record Surface 8 5/8" @ 684' 5 1/2" @ 3835'	
Lease Rohr Trust Unit No. 1-19		API # 15-051-26749-0000			
Field Wildcat		Location 2500' FNL & 1200' FEL			
Sec. 19 Twp. 14s Rge. 18w		County Ellis State Kansas			
Formation		Sample tops		Log Tops	
Top Anhydrite		1348		1348	
Base Anhydrite		1390		1391	
Datum		+758		+6	
Struct Comp		+715		+4	
Topeka		3122		3123	
Heebner		3379		3379	
Toronto		3399		3399	
LKC		3428		3430	
BKC		3655		3656	
Conglomerate Sand		3708		3708	
Arbuckle		3755		3756	
Total Depth		3835		3836	
Reference Well For Structural Comparison		DNOCI		2005' FSL & 2280' FWL	
Georgine Staab #1-19		2005' FSL & 2280' FWL		Sec. 19-14s-18w	

Drilling Contractor	Discovery Drilling, Rig #3	
Commenced	10-9-14	Completed 10-15-14
Samples Saved From	3100	To RTD
Drilling Time Kept From	3000	To RTD
Samples Examined From	3100	To RTD
Geological Supervision From	3000	To RTD

Summary and Recommendations
Due to structural position, DST recovery, and log evaluation, it was decided to set 5 1/2" production casing for completion in the Conglomerate Sand.

Respectfully Submitted,
Marc A. Downing



DST #1
 3701-3744
 45-46-45-46
 I.F.-808 13 min 13" 516
 F.F.-808 12 min 13" 516
 I.F.P. 28-110
 F.F.P. 132-207
 S.P.P. 1159-1137
 H.P. 1864-1797
 R.C.:
 460' CO
 60' MCO 70/0
 BHT: 113 G=35

M. Downing