

REPORT NO. 15-153-21059-00-00
 COMPANY The Bill Bowman
 Dr. Company Coddell, KS
 WELL Simminger SW 2
 FIELD Wichita
 LOCATION 1090' FSL E 5280' FEL
 SEC. 17 TWP. 15 RNG. 32W
 COUNTY Rawlins STATE Kansas
 OPERATOR The Bill Bowman, Dr. Co.
 CONTRACTOR White Knight Drilling, LLC
 DATE 9-21-14
 WELL DEPTH 4420'

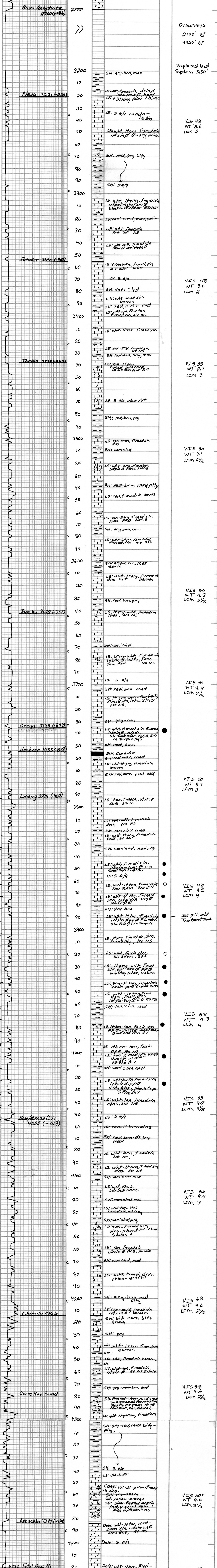
DATE	WELL DEPTH	WELL TYPE	WELL NO.	WELL NAME	WELL STATUS
9-21-14	2650	RR	1	1234	263
9-21-14	2650	RR	1	1234	263
9-21-14	2650	RR	1	1234	263
9-21-14	2650	RR	1	1234	263
9-21-14	2650	RR	1	1234	263
9-21-14	2650	RR	1	1234	263
9-21-14	2650	RR	1	1234	263
9-21-14	2650	RR	1	1234	263
9-21-14	2650	RR	1	1234	263
9-21-14	2650	RR	1	1234	263

DATE	WELL DEPTH	WELL TYPE	WELL NO.	WELL NAME	WELL STATUS
9-21-14	2650	RR	1	1234	263
9-21-14	2650	RR	1	1234	263
9-21-14	2650	RR	1	1234	263
9-21-14	2650	RR	1	1234	263
9-21-14	2650	RR	1	1234	263
9-21-14	2650	RR	1	1234	263
9-21-14	2650	RR	1	1234	263
9-21-14	2650	RR	1	1234	263
9-21-14	2650	RR	1	1234	263
9-21-14	2650	RR	1	1234	263

ANHYDRITE BASE
 3221 (335) 3221 (-335)
 3321 (335) 3321 (-335)
 3421 (335) 3421 (-335)
 3521 (335) 3521 (-335)
 3621 (335) 3621 (-335)
 3721 (335) 3721 (-335)
 3821 (335) 3821 (-335)
 3921 (335) 3921 (-335)
 4021 (335) 4021 (-335)
 4121 (335) 4121 (-335)
 4221 (335) 4221 (-335)
 4321 (335) 4321 (-335)
 4421 (335) 4421 (-335)

NEVA 3221 (335)
 FORTNER 3355 (446)
 TARKIN 3422 (522)
 TOPEKA 3672 (757)
 OREND 3735 (849)
 HEBNER 3755 (869)
 LANSING 3773 (907)
 BASE KANSAS CITY 4055 (-1169)
 ARBUCKLE 4381 (178)

DRILLING TIME IN MINUTES PER FOOT
 Rate of Penetration Decreases
 5" 10" 15" 20" 25"



CONTRACTOR White Knight Drilling LLC
 LEASE Simminger IP Oil
 ELEVATION 2886 KB RTD 4420
 LOCATION 1090' FSL E 5280' FEL
 SEC. 17 TWP. 15 RNG. 32W
 COUNTY Rawlins STATE Kansas