

MUD LOG
WellSight Systems
Scale 1:240 (5"=100') Imperial
Measured Depth Log

Well Name: **MARCOTTE #4**
Location: **1320'FNL & 660' FEL: Sec. 20 ;Twnsp. 9s.; Rge. 18w.**
License Number: **34795** Region: **Rooks County, KS**
Spud Date: **9/27/2014** Drilling Completed: **10/4/2014**
Surface Coordinates: **C E/2 NE**

Bottom Hole
Coordinates:
Ground Elevation (ft): **2167'** K.B. Elevation (ft): **2174'**
Logged Interval (ft): **2800'** To: **3961'** Total Depth (ft): **3961'**
Formation: **Arbuckle**
Type of Drilling Fluid: **Chemical**

Printed by MUD.LOG from WellSight Systems 1-800-447-1534 www.WellSight.com

OPERATOR

Company: **ABUNDANT OIL PARTNERSHIP**
Address: **P.O. Box 2216**
Grand Island, NE 68802

GEOLOGIST

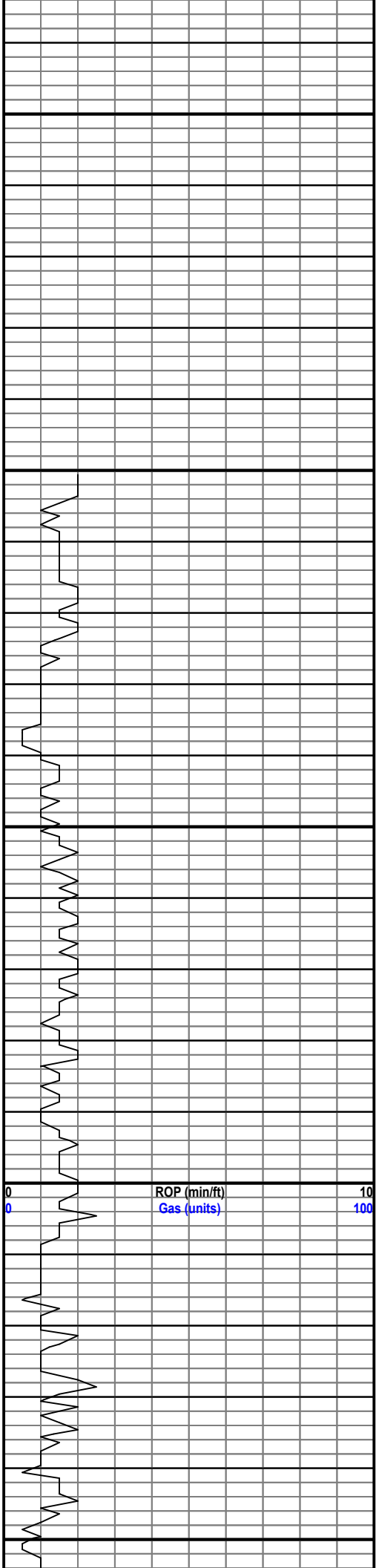
Name: **Mike Bair**
Company: **Abundant Oil Partnership**
Address: **Longmont, CO.**

FORMATION TOPS

FORMATION	LOG TOP	SAMPLE TOP
Anhydrite	1495 (+679)	1497 (+676)
Topeka	3091 (-916)	3090 (-916)
Heebner	3305 (-1131)	3305 (-1131)
Toronto	3324 (-1150)	3323 (-1149)
Lansing	3345 (-1171)	3347 (-1173)
BKC	3570 (-1396)	3551 (-1384)
Arbuckle	3592 (-1418)	3591 (-1417)
TD	3961 (-1787)	3960 (-1786)

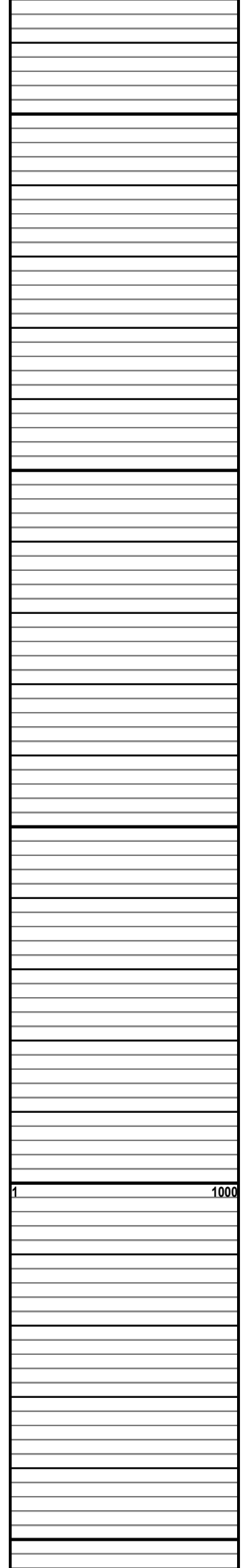
DSTs

DST#1 3542-3600' 30-30-30-30
IFP: wk surf blow, died in 12 min; ISIP: No blow back
FFP: Dead, flushed-no help; FSIP: No blow back
FP: (45-169)(89-48) SIP: 172-64
REC: 4' mud

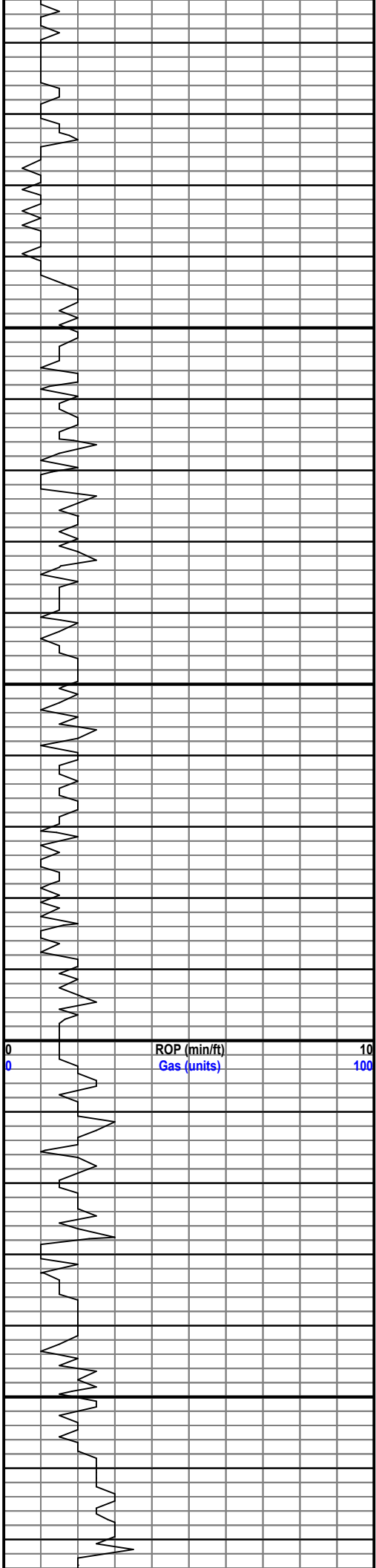


3050 3000 2950 2900 2850 2800 2750 2700 2650

ROP (min/ft) 10
Gas (units) 100



1 1000



3100

3150

3200

3250

Sh, gry; Slst, gry, argil, ns, n/o

Ls, crm, fxl, ns, n/o; Sh gry

Ls, crm, foss, pr vis por to Ls, sl gran, ns, n/o

Ls, crm-lt gry, fxl to sl gran, few w foss frags, ns, n/o

Ls, tan, mdstn, sh, gry, ns, n/o

Slst, gry, agril, sl calc, ns, n/o

Ls, ofwh, sl gran, sl por, cky to Ls, gry, sl gran, w sh incl, pr vis por, ns, n/o 3350

a/a

Ls, crm, fxl to gran, sct'd cky, ns, n/o

Ls, lt gry, gran, some w sh incl, micro pyrite, ns, n/o

Ls, gry-tan, pkstn, poss ixl por, ns, n/o, some cky

a/a; Sh, gry

SH, blk 3210

Ls, crm, gran, cky, ns, n/o

Ls, wh, fxl, nvp, ns to few pcs Slst, tan, argil, cky, ns, n/o

Ls, crm, tan, mdstn to sl gran, ns, n/o; chert, tan, op, ns

Ls, wh-crm, foss frags; Sh, gry, ns, n/o

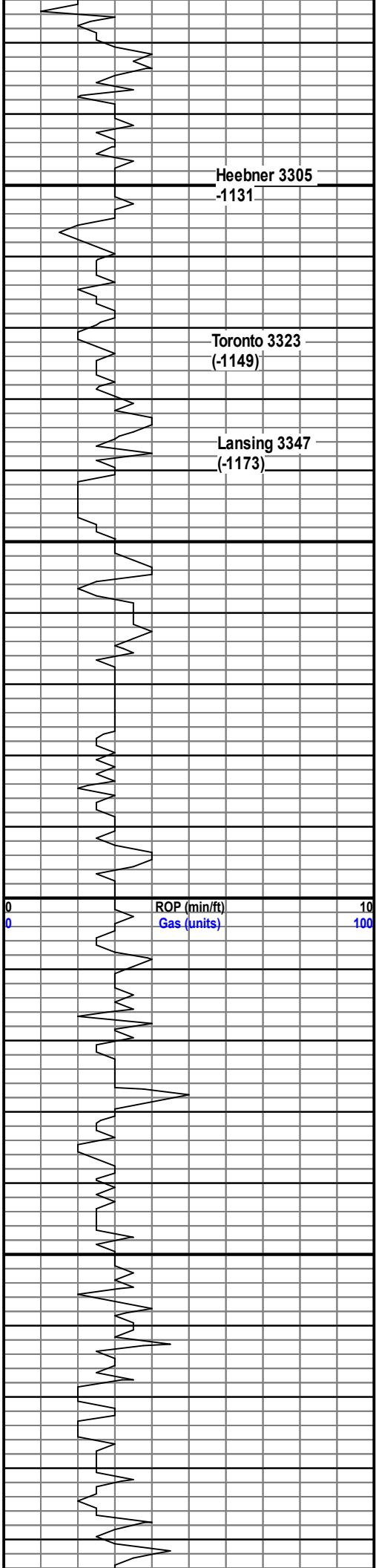
Ls, crm, fxl, r pc sh, blk, ns, n/o

Ls, tan-gry, fxl few sl gran, few cky, ns, n/o

Ls, crm-tan, sl gran, argil, ns, n/o

1 1000

3245 Bit Trip
Strap .28 short
Dev. 1 degree



3300

Heebner 3305
-1131

Ls, wh, spt'd sat'd stn few oil stn in vg, fr por, low rep, sl sfo, sl odor 3310

SH, blk, platy, sl carb 3320 sample

Sh, lt gry, soft to Sh, v.c.; Ls, crm-tan, mdstn, ns, n/o

Toronto 3323
(-1149)

Ls, wh, fxl, sl cky, spt'd surf stn, nsfo, n/o

Lansing 3347
(-1173)

Ls,wh, ool, nvp, spt'd stn to Ls, a/a w v sl sfo wh bxn, n/o

3350

Ls, a/a; Chert, op-tan

Ls, wh-crm, fxl ns, Chert, a/a; Sh, grn, sl calc, ns, n/o

Ls, wh, spt'd stn, r vg w oil, low rep, n/o

Ls, crm-tan, fxl to sl gran, ns, n/o 3400

3400

a/a, cky, pr sample

Ls, crm-tan, r pc w stn on edge, nsfo, n/o

Ls, ofwh, fxl, sl por, spt'd stn, sl sfo wh bxn, sl odor 3430

Ls, crm-tan, poss v sl odor, ns

Ls, wh, fxl, sct'd ck r pc fr por, oil stn, v sl sfo wh bxn to Ls, crm, sl gran, sl por, spt'd surf stn, low rep, wk odor 3450

3450

a/a r pc w gd por, oil stn, nsfo, poss wk odor

1 pc Ls, tan, gran, fr ixgran por, lt sfo, lt sat'd stn, wk odor 3470

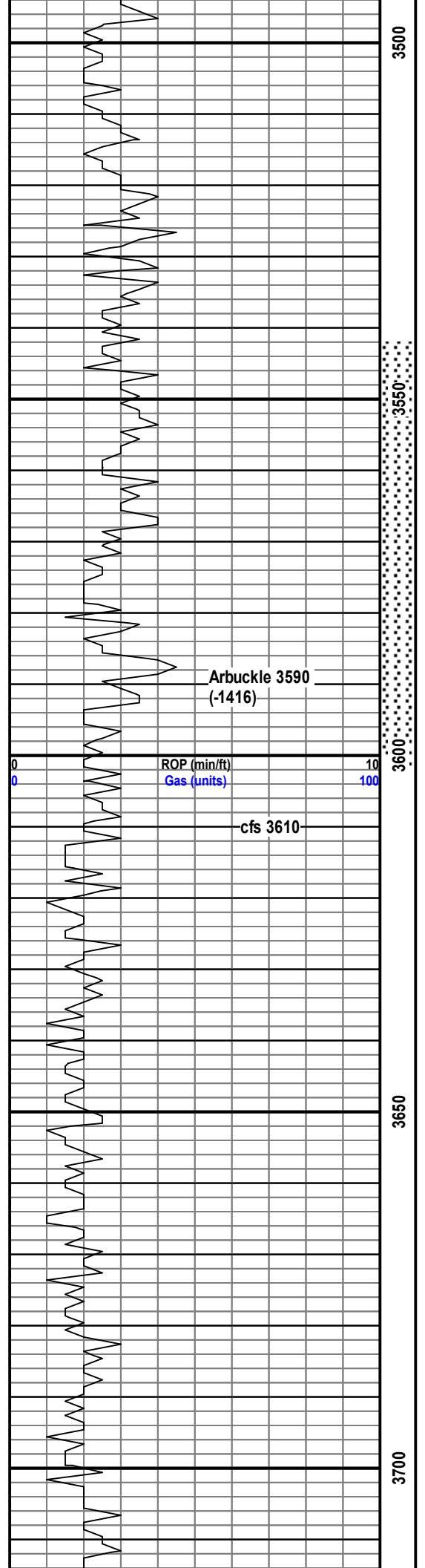
Sh, bk: Ls, a/a, spt'd vy por, v sl sfo, v wk odor

Sh, blk: Ls, gry, fxl to gran, some mot'd, ns, n/o

Chert, op-crm

ROP (min/ft) 0 10
Gas (units) 0 100

1 1000



3500
3550
3600
3650
3700

Ls, wh-crm, n; r pc Ls, lt gry, sl por, spt'd stn, v sl sfo, n/o

Ls, wh, gran, pr-sl ixgran por, lt sat'd stn, v sl sfo, n/o

Ls, wh-crm, cky, ns, n/o

Ls, crm, spt'd stn, pr vis por, v sl sfo wh bxn, n/o 3540 sample

Ls, gran, sat'd stn, gd por, nsfo (1 pc only) n/o

Ls, wh, fxl to f gran, pr sl por, sl sfo to few pc Ls, wh, ool, sl ixool por, spt'd stn, sl sfo and lt odor wh bxn 3560 sample

Ls, crm-wh, fxl, some cky, ns, n/o

Ls, few pc gran, fr ixgran por, sat'd stn, sl sfo to Ls, wh, dse, sat'd stn onedge, v sl sfo, v sl odor

wash red: Weathered Ls and soft red sh; r pc SS, qtz, gry, argil, fri, ns, n/o few pc Chert, op-wh

Dolo, fxl, sl-L fr ixl por, sat'd stn, lt sfo, low rep only 4 rx in cup; r pc Dolo, crm, vgy, hvy oil stn, sl sfo No odor 3598 20 min low rep

3598 40 min: Dolo, a/a, some cherty, sl - L fr por, sat'd stn, fr sfo in some rx, fair rep, n/o

3598 60 min Dolo, suc-fmxl, sl-few fr ixl por, sat'd stn, sl sfo, l-med rep, No Odor

3610 Dolo, crm-tan, dse, most barren, r pc wh f-mxl, sat'd stn, fr sfo wh bxn, N/O

Dolo, wh-crm, mst pr vis por, barren to spt'd surf stn to r pc mxl, frpor, sat'd stn, fr sfo wh bxn, N/O 3610 60 min

Dolo, crtm, dse, nvp to few pcs Dolo, wh, f-fmxl, sat'd sat'd stn, pr ixl por, few by, n/o

Dolo, crm-salmon, dse, pr vis por, sat'd stn, unable to break, n/o 3630

Dolo, wh, f-fmxl, mst barren, r pc w sl sfo r pc gil stn, 3640 sample

Dolo, f-fmxl, few pc w sl- L fr ixl por, sl-L fr sfo wh bxn, n/o 3650

Dolo, crm dse to f mxl, sat'd stn, sl por, few w oil filled vgs, sat'd stn, sl - L fr sfo wh bxn, low - low med rep, n/o 3660

Dolo, wh-crm, fxl, pr vis por, few w gil stn, nsfo, n/o ; sct'd Dolo, wh, ool, cherty

Dolo, crm-wh, barren, n/o

3570 Short trip 15 stands

CFS 3586

CFS 3598

ROP (min/ft)
Gas (units)

cfs 3610

Arbuckle 3590 (-1416)

1000

1

