



Mudgrouve

**PETROLEUM
CORPORATION**
CINCH, KANSAS

NOTES

Company: Mai Oil Operations, Inc.

Lease: Weeks Trust # 6

Field: Trapp

Location: NW-SW-SE-NE (2140' FNL & 1185' FEL)

Sec: 18 Twsp: 15S Rge: 13W

County: Russell State: Kansas

KB: 1817' GL: 1809'

API #: 15-167-23973-00-00

Contractor: Southwind Drilling, Inc. (Rig #3)

Spud: 06/11/2014 Comp: 06/17/2014

RTD: 3330' LTD: 3332'

Mud Up: 2200' Type Mud: Chemical

Samples Saved From: 2300' to RTD

Drilling Time Kept From: 2300' to RTD

Samples Examined From: 2300' to RTD

Geological Supervision from: 2300' to RTD

Geologist on Well: Wyatt Urban

Surface Casing: 8 5/8@ 795'

Electronic Surveys: Logged by Nabors Completion Services: DIL, MEL, CDL/CNL

Mai Oil Operations, Inc Well Comparison Sheet

Formation	Mai Oil- Weeks Trust #6 NW-SW-SE-NE 18-15S-13W 1817 KB				Abarta Oil & Gas- Weeks #4 NE-SW-SE-NE 18-15S-13W 1796 KB				Abarta Oil & Gas- Weeks T. #5 SW-SW-NE 18-15S-13W 1829 KB			
	Sample	Sub-Sea	Log	Sub-Sea	Log	Sub-Sea	Sample	Log	Log	Sub-Sea	Sample	Log
Anhydrite	795	1022	795	1022	781	1015	-7	7	825	1004	18	18
Grand Haven	2364	-547	2361	-544								
1st Tarkio Sd.	2368	-551	2370	-553								
Dover	2378	-561	2380	-563	2359	-563	2	0				
Tarkio Lime	2427	-610	2431	-614	2415	-619	9	5	2450	-621	11	7
2nd Tarkio Sd.	2442	-625	2443	-626								
Elmont	2494	-677	2494	-677	2474	-678	1	1	2511	-682	5	5
Howard	2629	-812	2630	-813	2611	-815	3	2	2648	-819	7	6
Severy	2679	-862	2682	-865					2699	-870	8	5
Topeka	2697	-880	2697	-880	2678	-882	2	2	2717	-888	8	8
Heebner	2935	-1118	2935	-1118	2916	-1120	2	2	2956	-1127	9	9
Toronto	2953	-1136	2951	-1134	2932	-1136	0	2	2975	-1146	10	12
Douglas	2963	-1146	2964	-1147	2948	-1152	6	5	2988	-1159	13	12
Lansing	3001	-1184	3003	-1186	2983	-1187	3	1	3022	-1193	9	7
BKC	3253	-1436	3248	-1431	3228	-1432	-4	1	3263	-1434	-2	3
Arbuckle	3261	-1444	3259	-1442	3239	-1443	-1	1	3276	-1447	2	5

Elmont	2494	-677	2494	-677	2474	-678	1	1	2511	-682	5	5
Howard	2629	-812	2630	-813	2611	-815	3	2	2648	-819	7	6
Severy	2679	-852	2682	-865					2699	-870	8	5
Topoka	2697	-880	2697	-880	2678	-882	2	2	2717	-888	8	8
Heebner	2935	-1118	2935	-1118	2916	-1120	2	2	2956	-1127	9	9
Toronto	2953	-1136	2951	-1134	2932	-1136	0	2	2975	-1146	10	12
Douglas	2963	-1146	2964	-1147	2948	-1152	6	5	2988	-1159	13	12
Lansing	3001	-1184	3003	-1186	2983	-1187	3	1	3022	-1193	9	7
BKC	3253	-1436	3248	-1431	3228	-1432	-4	1	3263	-1434	-2	3
Arbuckle	3261	-1444	3259	-1442	3239	-1443	-1	1	3276	-1447	3	5
RTD	3330	-1513	3330	-1513	3254	-1458	-55	-55	3284	-1455	-58	-58
LTD	3332	-1515	3332	-1515	3251	-1455	-60	-60	3283	-1454	-61	-61

Elmont	2494	-677	2494	-677	2474	-678	1	1	2511	-682	5	5
Howard	2629	-812	2630	-813	2611	-815	3	2	2648	-819	7	6
Severy	2679	-852	2682	-865					2699	-870	8	5
Topoka	2697	-880	2697	-880	2678	-882	2	2	2717	-888	8	8
Heebner	2935	-1118	2935	-1118	2916	-1120	2	2	2956	-1127	9	9
Toronto	2953	-1136	2951	-1134	2932	-1136	0	2	2975	-1146	10	12
Douglas	2963	-1146	2964	-1147	2948	-1152	6	5	2988	-1159	13	12
Lansing	3001	-1184	3003	-1186	2983	-1187	3	1	3022	-1193	9	7
BKC	3253	-1436	3248	-1431	3228	-1432	-4	1	3263	-1434	-2	3
Arbuckle	3261	-1444	3259	-1442	3239	-1443	-1	1	3276	-1447	3	5
RTD	3330	-1513	3330	-1513	3254	-1458	-55	-55	3284	-1455	-58	-58
LTD	3332	-1515	3332	-1515	3251	-1455	-60	-60	3283	-1454	-61	-61

ROCK TYPES

Dolprim
 Lmst fw<7
 shale, gm
 shale, gry
 Carbon Sh
 shale, red
 Ss

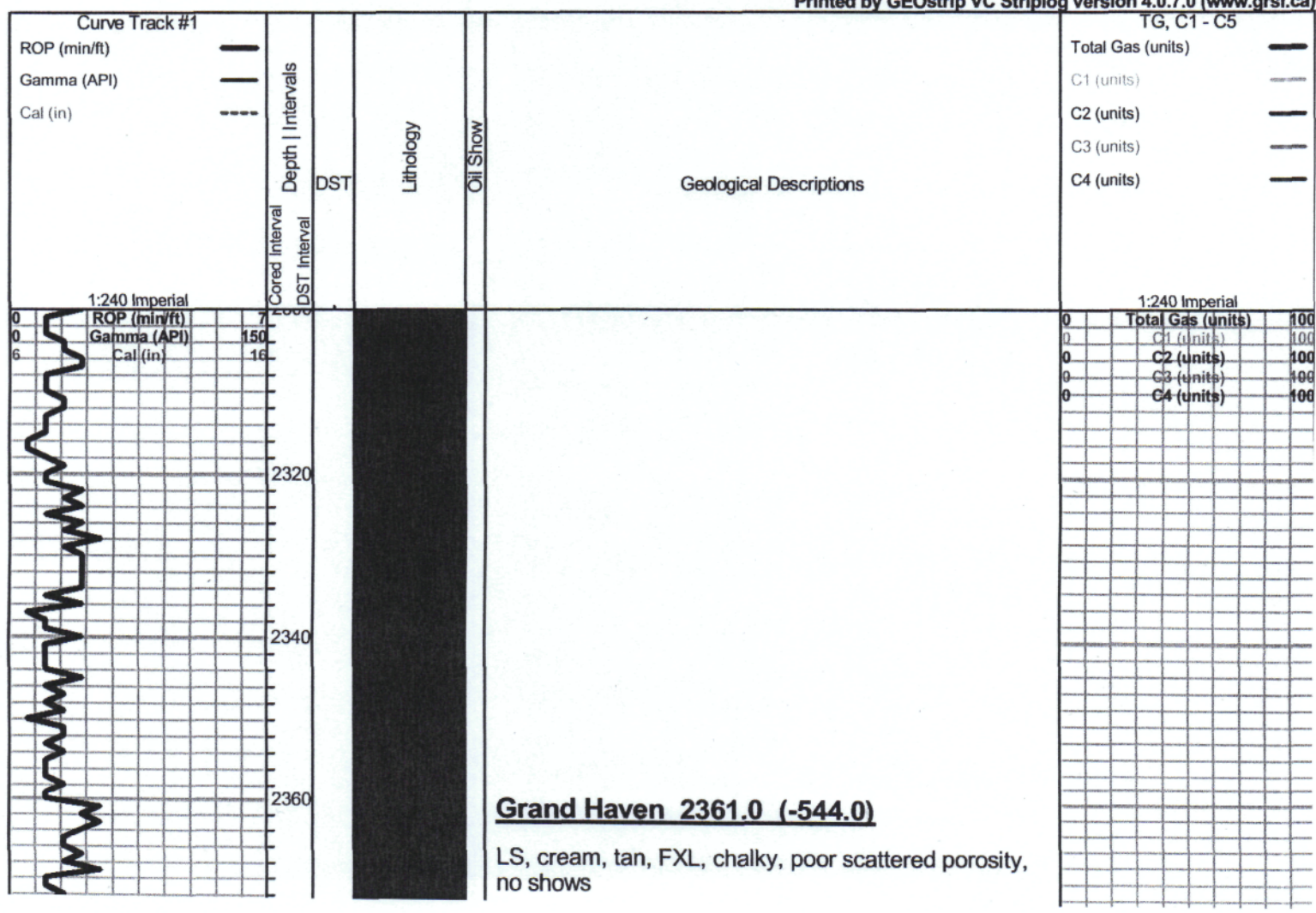
ACCESSORIES

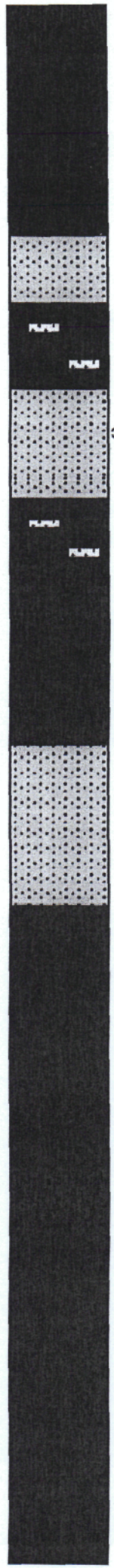
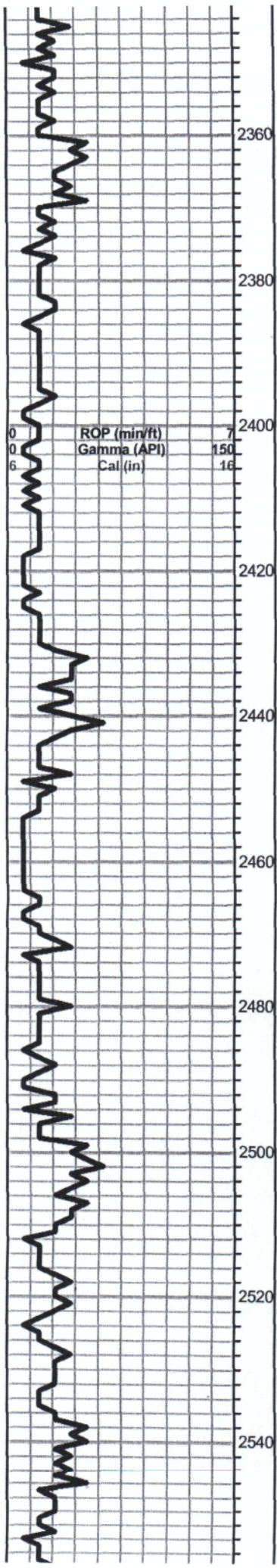
STRINGER
 . . . Sandstone
TEXTURE
 C Chalky

OTHER SYMBOLS

Oil Show
 ● Good Show
 ○ Fair Show
 ○ Poor Show
 ○ Spotted or Trace
 ○ Questionable Stn
 D Dead Oil Stn
 ■ Fluorescence
 * Gas
DST
 ■ DST Int
 ■ DST alt
 ■ Core
 || tail pipe

Printed by GEOstrip VC Striplog version 4.0.7.0 (www.grsi.ca)





Grand Haven 2361.0 (-544.0)

LS, cream, tan, FXL, chalky, poor scattered porosity, no shows

Sd. gry, F. grain, well sorted, trc. sfo, trc. black stain, no odor.

Dover 2380.0 (-563.0)

LS, white, gry, FXL, chalky, poor visible porosity, no shows

Sd. gray, F. grain well sorted, trc SFO, no odor, no brown stain,

Sh. gray, black, gray, greenish, silty

Tarkio Lime 2427.0 (-610.0)

LS, cream to tan, FXL, sl. chalky, few foss, poor scattered porosity no shows

Sd. gry, F. grain, Lt. trc. SFO, trc. brown stain, odor??

LS, tan, FXL, chalky, few foss, poor scattered porosity, no shows

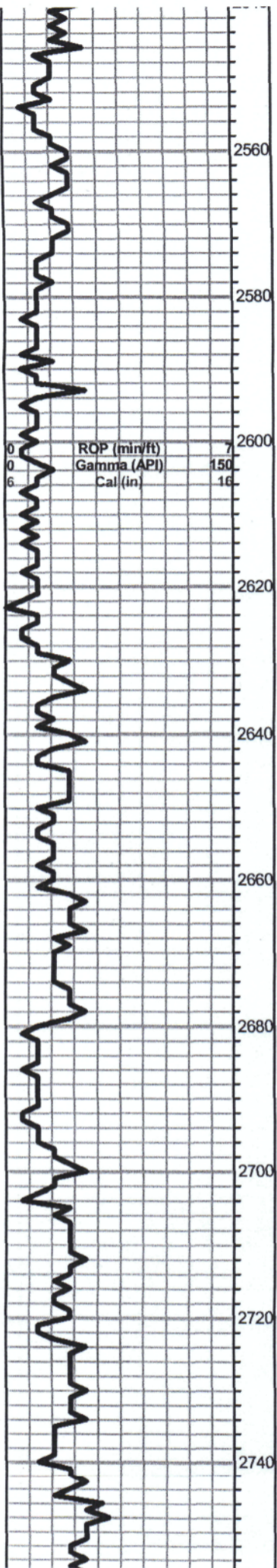
Elmont 2494.0 (-677.0)

LS, cream to tan, FXL, cherty, poor scattered porosity, no shows

LS, tan to brown, FXL, dense, poor visible porosity, no shows

Trc. Black carb Sh.

0	Total Gas (units)	100
0	C1 (units)	100
0	C2 (units)	100
0	C3 (units)	100
0	C4 (units)	100



Trc. Black carb Sh.

LS, white to gray, FXL, chalky, poor visible porosity, no shows

Sd. gry, F. grain, well sorted, no shows

Howard 2629.0 (-812.0)

LS, tan to brown, FXL, dense, poor visible porosity, no shows

LS, tan to brown, FXL, dense, poor visible porosity, no shows

Severy 2679.0 (-862.0)

Black carb Sh.

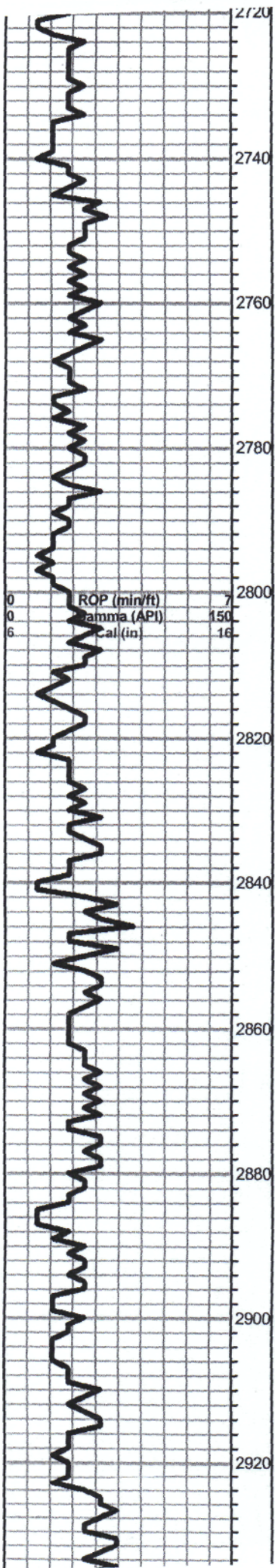
Topeka 2697.0 (-880.0)

LS, cream to tan, FXL, poor visible porosity, no shows

LS, white to tan, FXL, few foss, poor scattered porosity, trc. black stain, odor???, NSFO

LS, gray, FXI, cherty, dns, NSFO, no odor

0	Total Gas (units)	100
0	C1 (units)	100
0	C2 (units)	100
0	C3 (units)	100
0	C4 (units)	100



LS, white to tan, FXL, few foss, poor scattered porosity, trc. black stain, odor???, NSFO

LS, gray, FXL, cherty, dns, NSFO, no odor

LS, white to cream, FXL, chalky, poor scattered porosity, no shows

LS, white to cream, A/A, sppty, brown, black stain, NSFO, no odor

Black carb Shale

LS, cream to tan, FXL, chalky, dense, poor visible porosity, no shows

LS, tan, brown, gray, FXL dense, cherty, NSFO, no odor

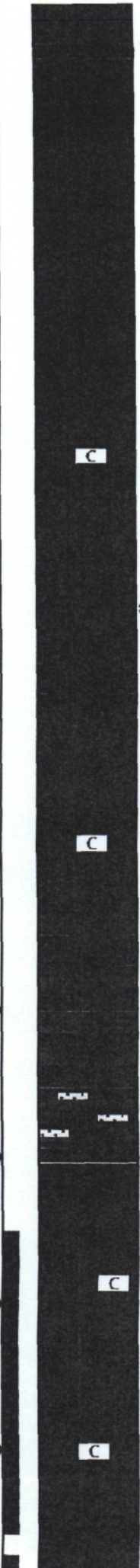
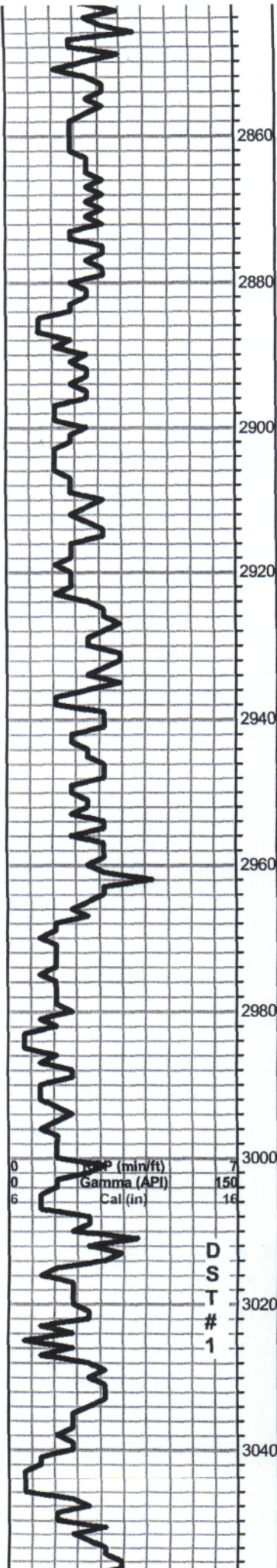
Slug black carb Sh.

LS, tan ool, FXL, dense, cherty, no shows

LS, cream to tan, FXL, chalky, poor visible porosity, few foss, Lt. brown stain, NSFO, no odor

LS, tan, chalky, Lt. SFO, no odor

Total Gas (units)	
0	C1 (units)
0	C2 (units)
0	C3 (units)
0	C4 (units)



Slug black carb Sh.

LS, tan ool, FXL, dense, cherty, no shows

LS, cream to tan, FXL, chalky, poor visible porosity, few foss, Lt. brown stain, NSFO, no odor

LS, tan, chalky, Lt. SFO, no odor

Heebner 2935.0 (-1118.0)

Black carb Sh.
Sh. maroon, gray, greenish

Toronto 2953.0 (-1136.0)

LS, cream to tan, FXL, chalky, foss, Lt. Spty stain, NSFO, no odor

Douglas 2963.0 (-1146.0)

Sh. gray, black, maroon, silty

Sh. gray, maroon, greenish, silty, soft

Trc. Sd. gray, F.grain, well sorted, Lt. SFO, black, dark brown stain, fair odor

Lansing 3001.0 (-1184.0)

LS, cream to tan, FXL, dense, poor scattered porosity, few foss no shows

LS, cream to tan, FXL, ool, poor scattered porosity, trace brown stain, Ft. odor, NSFO

LS, cream, white, ool, fair scattered porosity, SFO, good odor, Lt. brown stain

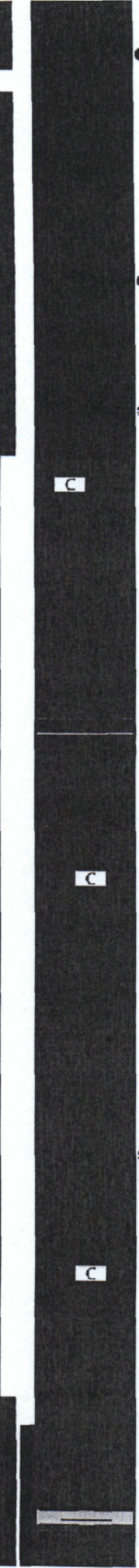
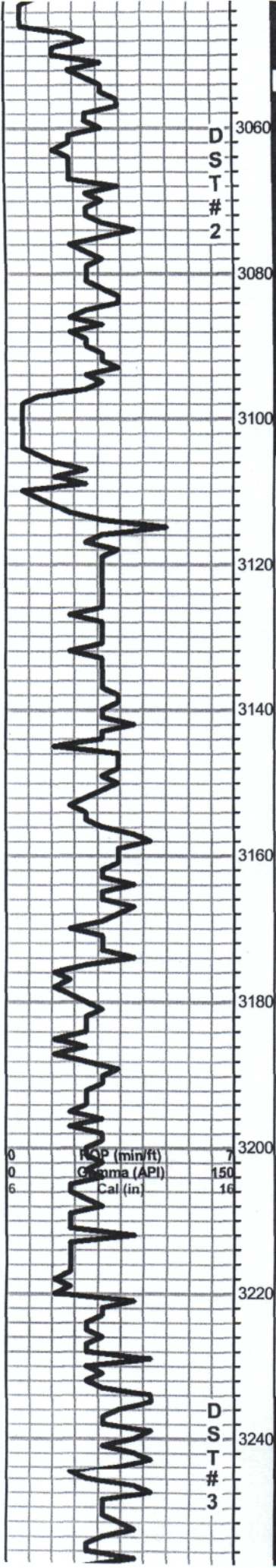
LS, cream to white, ool, fair oom porosity, SFO, strong odor, golden brown stain,

DST # 1 3012-3049
30-30-45-45

Blow: weak slow building
3"

Recovery:
0
0.75' Mud w/ oil spots
0
0
0 125' MW
(75%W, 25% M)

Pressures:
-ISIP 263 psi
-FSIP 249 psi
-IFP 37-56 psi
-FFP 67-121 psi
-HSH 1494-1457 psi



LS, cream to white, ool, fair oom porosity, SFO, strong odor, golden brown stain,
 LS, white to cream, FXL, dense, poor scattered porosity, no shows
 LS, white, FXL, few ool, poor-fair scattered porosity, Lt. SFO, strong odor
 LS, white, oom, good vuggy porosity, Lt. SFO, Strong odor
 LS, tan, vuggy, good oom porosity, barren
 LS, cream to tan, FXL, dense, poor scattered porosity, no shows
 Black carb Sh
 LS, cream, gray, FXL, slightly chalky in parts, few foss, poor scattered porosity, no shows
 LS, cream, FXL, few foss, poor scatterd porosity, no shows, trace gray, silty, shale
 LS, cream, ool, poor scattered porosity, Lt. SFO, odor???
 LS, cream, FXL, chalky, no visible porosity, no shows, trace. gray silty shale
 LS, tan to brown, FXL, dense, poor scattered porosity, no shows
BKC 3245.0 (-1428.0)
 LS, cream to tan, FXL, dense, poor visible porosity, no shows, trace, Sh. aqua green soft, odor???

DST # 2 3055-3104
30-30-30-30

Blow: Weak 1/2"

Recovery:

15' Mud w/ show of oil on tool

Pressures:

ISIP 165 psi
 FSIP 157 psi
 IFP 24-27 psi
 FFP 29-34psi

0	Total Gas (units)	100
0	C1 (units)	100
0	C2 (units)	100
0	C3 (units)	100
0	C4 (units)	100

DST#3 3235-3267
45-45-45-45

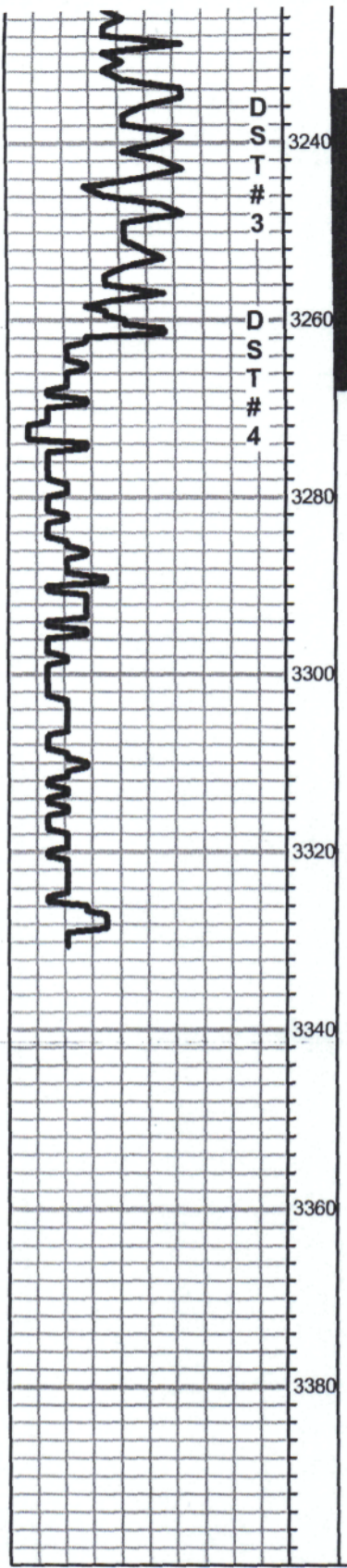
Blow: BOB 14 min.

Recovery:

150' GCO
 (20%G, 80%O)

Pressures:

ISIP 1090 psi
 FSIP 1086 psi
 IFP 20-40 psi
 FFP 41-65 psi
 HSH 1634-1601 psi



LS, tan to brown, FXL, dense, poor scattered porosity, no shows

BKC 3245.0 (-1428.0)

LS, cream to tan, FXL, dense, poor visible porosity, no shows, trace, Sh. aqua green soft, odor???

Arbuckle 3261.0 (-1444.0)

Dol, white to gray, FXL, poor- fair scattered porosity, SFO, Lt. golden brown stain, strong odor.

Dol, gry, coarse, XL, fair scattered porosity, good SFO, strong odor,

Dol, gry, FXL, poor scattered porosity, Lt. SFO, odor

Dol, F-MXL, poor scattered porsity, Lt. SFO, Ft. odor, Lt. brown stain

Dol. gry, FXL, poor scattered porosity, trace SFO, trc. brown, stain,

Dol, tan, FXL, dense, poor visible porosity, no shows, ft. odor

Recovery:
150' GCO
(20%G, 80%O)

Pressures:
-ISIP 1090 psi
-FSIP 1086 psi
-IFP 20-40 psi
-FFP 41-65 psi
-HSH 1634-1601 psi

DST # 4 3239-3274
30-30-30-30

Blow: BOB 30 sec.

Recovery:
125' GIP
60' GOCM
(15%G, 25%O, 60%M)

505' GSOCMW
(35%G, 10%O, 45%W, 10%M)

1275' GSWMCO
(20%G, 65%O, 10%W, 5%M)

Pressures:
ISIP 1035 psi
FSIP 1046 psi
IFP 191-521psi
FFP 548-732 psi
HSH 1664-1581 psi



TRILOBITE TESTING, INC

DRILL STEM TEST REPORT

Mai Oil Operations, Inc.
 8411 Preston Rd. Ste. 800
 Dallas, TX 75225
 ATTN: Wyatt Urban

18-15S-13W Russell,KS

Weeks Trust #6

Job Ticket: 59247 DST#: 1
 Test Start: 2014.06.15 @ 06:31:15

GENERAL INFORMATION:

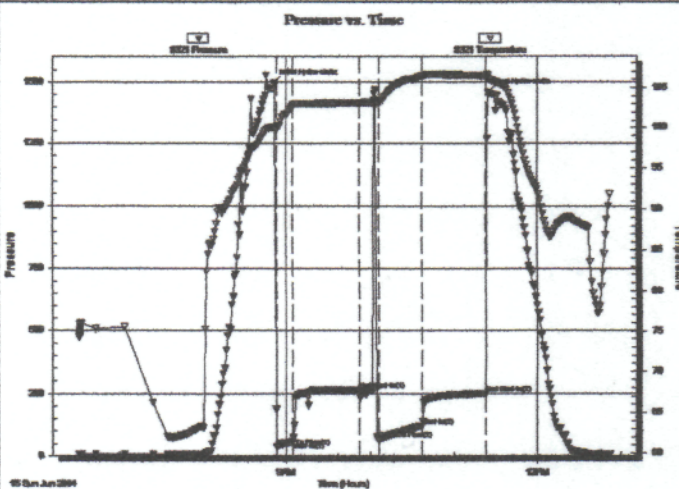
Formation: LKC "A-C"
 Deviated: No Whipstock: ft (KB)
 Time Tool Opened: 08:53:15
 Time Test Ended: 12:51:45
 Interval: 3012.00 ft (KB) To 3049.00 ft (KB) (TVD)
 Total Depth: 3049.00 ft (KB) (TVD)
 Hole Diameter: 7.88 inches Hole Condition: Poor
 Test Type: Conventional Bottom Hole (Initial)
 Tester: Brannan L
 Unit No: 48
 Reference Elevations: 1817.00 ft (KB)
 1809.00 ft (CF)
 KB to GR/CF: 8.00 ft

Serial #: 8321

Outside

Press@RunDepth: 120.90 psig @ 3013.00 ft (KB) Capacity: 8000.00 psig
 Start Date: 2014.06.15 End Date: 2014.06.15 Last Calib.: 2014.06.15
 Start Time: 06:31:16 End Time: 12:51:45 Time On Btm: 2014.06.15 @ 08:51:15
 Time Off Btm: 2014.06.15 @ 11:24:15

TEST COMMENT: 30- IF- Built slowly to 3"
 30- IS- No blow
 45- FF- No blow flushed tool BOB 31 mins
 45- FS- No blow



PRESSURE SUMMARY

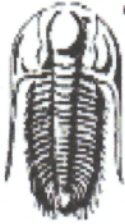
Time (Min.)	Pressure (psig)	Temp (deg F)	Annotation
0	1494.45	99.93	Initial Hydro-static
2	36.50	100.08	Open To Flow (1)
13	55.99	102.83	Shut-in(1)
61	262.67	103.16	End Shut-in(1)
75	66.70	103.27	Open To Flow (2)
106	120.90	106.44	Shut-in(2)
152	248.95	106.44	End Shut-in(2)
153	1456.63	106.24	Final Hydro-static

Recovery

Length (ft)	Description	Volume (bbl)
75.00	M w/ oil spots	1.02
125.00	MW, 25%M 75%W	1.71

Gas Rates

	Choke (inches)	Pressure (psig)	Gas Rate (Mcf/d)



TRILOBITE TESTING, INC

DRILL STEM TEST REPORT

Mai Oil Operations, Inc.
 8411 Preston Rd. Ste. 800
 Dallas, TX 75225
 ATTN: Wyatt Urban

18-15S-13W Russell,KS
Weeks Trust #6
 Job Ticket: 59248 DST#: 2
 Test Start: 2014.06.15 @ 19:35:58

GENERAL INFORMATION:

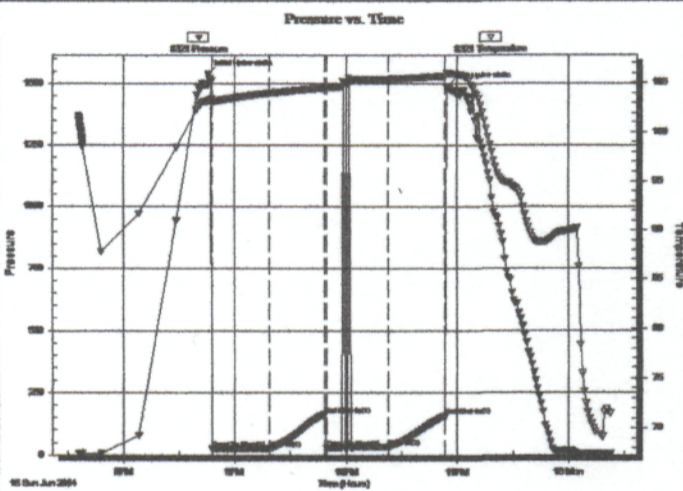
Formation: **LKC "D-G"**
 Deviated: No Whipstock: ft (KB)
 Time Tool Opened: 20:47:58
 Time Test Ended: 00:22:58
 Interval: **3055.00 ft (KB) To 3104.00 ft (KB) (TVD)**
 Total Depth: 3104.00 ft (KB) (TVD)
 Hole Diameter: 7.88 inches Hole Condition: Fair
 Test Type: Conventional Bottom Hole (Reset)
 Tester: Brannan L
 Unit No: 48
 Reference Elevations: 1817.00 ft (KB)
 1809.00 ft (CF)
 KB to GR/CF: 8.00 ft

Serial #: 8321

Outside

Press@RunDepth: 33.88 psig @ 3056.00 ft (KB)
 Start Date: 2014.06.15 End Date: 2014.06.16
 Start Time: 19:35:59 End Time: 00:22:58
 Capacity: 8000.00 psig
 Last Calib.: 2014.06.16
 Time On Btmr: 2014.06.15 @ 20:45:58
 Time Off Btmr: 2014.06.15 @ 22:54:58

TEST COMMENT: 30- IF- Built very slowly to 1/2"
 30- IS- No blow
 30- FF- No blow flushed tool no blow
 30- FS- No blow



PRESSURE SUMMARY

Time (Min.)	Pressure (psig)	Temp (deg F)	Annotation
0	1540.06	103.20	Initial Hydro-static
2	24.27	103.00	Open To Flow (1)
33	27.03	103.96	Shut-In(1)
63	164.67	104.51	End Shut-In(1)
64	28.51	104.50	Open To Flow (2)
97	33.88	105.35	Shut-In(2)
128	157.45	105.69	End Shut-In(2)
129	1488.60	105.98	Final Hydro-static

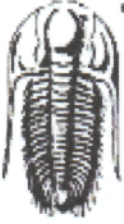
Recovery

Length (ft)	Description	Volume (bbl)
15.00	M w / show of oil on tool	0.20

* Recovery from multiple tests

Gas Rates

	Choke (inches)	Pressure (psig)	Gas Rate (Mcf/d)



TRILOBITE TESTING, INC.

DRILL STEM TEST REPORT

Mai Oil Operations, Inc.
 8411 Preston Rd. Ste. 800
 Dallas, TX 75225
 ATTN: Wyatt Urban

18-15S-13W Russell,KS
Weeks Trust #6
 Job Ticket: 59249 DST#: 3
 Test Start: 2014.06.16 @ 15:12:36

GENERAL INFORMATION:

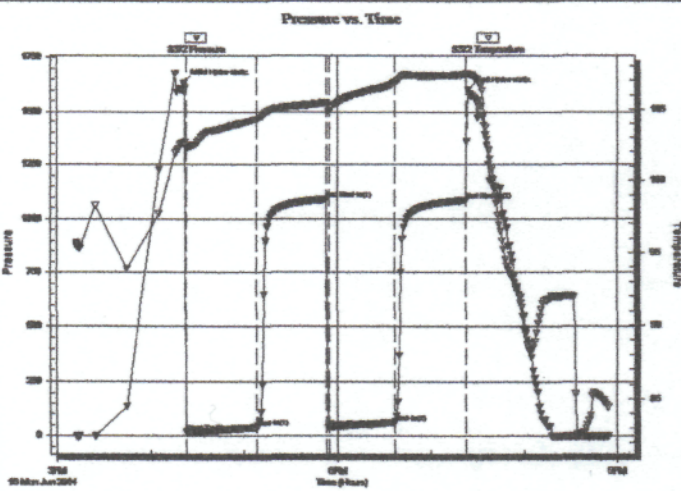
Formation: **Arbuckle**
 Deviated: No Whipstock: ft (KB)
 Time Tool Opened: 16:23:06
 Time Test Ended: 20:54:06
 Interval: **3235.00 ft (KB) To 3267.00 ft (KB) (TVD)**
 Total Depth: 3267.00 ft (KB) (TVD)
 Hole Diameter: 7.88 inches Hole Condition: Fair
 Test Type: Conventional Bottom Hole (Reset)
 Tester: Brannan L
 Unit No: 48
 Reference Elevations: 1817.00 ft (KB)
 1809.00 ft (CF)
 KB to GR/CF: 8.00 ft

Serial #: 8372

Inside

Press@RunDepth: 65.04 psig @ 3236.00 ft (KB) Capacity: 8000.00 psig
 Start Date: 2014.06.16 End Date: 2014.06.16 Last Calib.: 2014.06.16
 Start Time: 15:12:37 End Time: 20:54:06 Time On Btm: 2014.06.16 @ 16:21:36
 Time Off Btm: 2014.06.16 @ 19:24:06

TEST COMMENT: 45- IF- BOB 14 mins
 45- IS- No blow
 45- FF- BOB 6 mms
 45- FS- No blow



PRESSURE SUMMARY

Time (Min.)	Pressure (psig)	Temp (deg F)	Annotation
0	1634.33	102.57	Initial Hydro-static
2	19.93	102.27	Open To Flow (1)
47	39.96	104.29	Shut-in(1)
92	1089.73	105.46	End Shut-in(1)
94	40.96	104.93	Open To Flow (2)
136	65.04	106.89	Shut-in(2)
181	1085.65	107.41	End Shut-in(2)
183	1600.71	107.49	Final Hydro-static

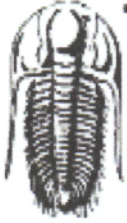
Recovery

Length (ft)	Description	Volume (bbl)
150.00	CGO, 20%G 80%O	2.05
0.00	600' GP	0.00

* Recovery from multiple tests

Gas Rates

	Choke (inches)	Pressure (psig)	Gas Rate (Mcf/d)



TRILOBITE TESTING, INC.

DRILL STEM TEST REPORT

Mai Oil Operations, Inc.
 8411 Preston Rd. Ste. 800
 Dallas, TX 75225
 ATTN: Wyatt Urban

18-15S-13W Russell,KS
Weeks Trust #6
 Job Ticket: 59250 **DST#: 4**
 Test Start: 2014.06.17 @ 01:34:33

GENERAL INFORMATION:

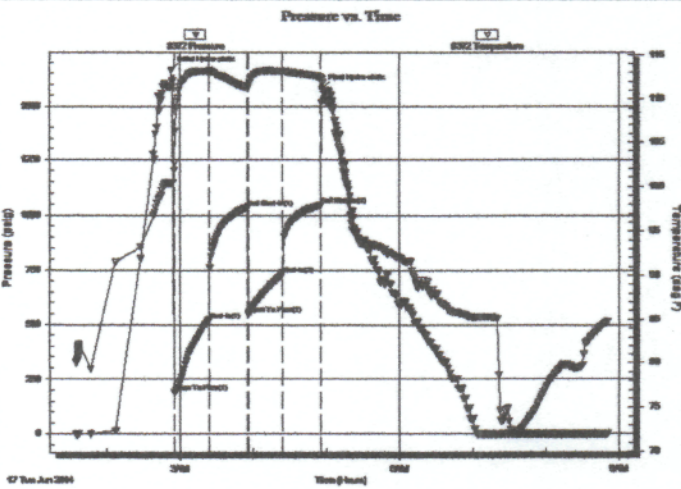
Formation: **Arbuckle**
 Deviated: **No Whipstock** ft (KB)
 Test Type: **Conventional Bottom Hole (Reset)**
 Time Tool Opened: 02:55:33
 Tester: **Brannan L**
 Time Test Ended: 08:50:33
 Unit No: **48**
 Interval: **3239.00 ft (KB) To 3274.00 ft (KB) (TVD)**
 Reference Elevations: **1817.00 ft (KB)**
 Total Depth: **3274.00 ft (KB) (TVD)**
 1809.00 ft (CF)
 Hole Diameter: **7.88 inches** Hole Condition: **Fair**
 KB to GR/CF: **8.00 ft**

Serial #: 8372

Inside

Press@RunDepth: **731.94 psig @ 3240.00 ft (KB)** Capacity: **8000.00 psig**
 Start Date: **2014.06.17** End Date: **2014.06.17** Last Calib.: **2014.06.17**
 Start Time: **01:34:34** End Time: **08:50:33** Time On Btm: **2014.06.17 @ 02:53:03**
 Time Off Btm: **2014.06.17 @ 04:56:33**

TEST COMMENT: 30- IF- BOB 30 secs
 30- IS- No blow
 30- FF- BOB 1 min
 30-FSI- No blow



PRESSURE SUMMARY

Time (Min.)	Pressure (psig)	Temp (deg F)	Annotation
0	1664.44	100.29	Initial Hydro-static
3	190.78	102.62	Open To Flow (1)
31	521.49	113.12	Shut-In(1)
62	1035.39	111.29	End Shut-In(1)
63	548.07	111.35	Open To Flow (2)
91	731.94	113.13	Shut-In(2)
122	1045.57	112.47	End Shut-In(2)
124	1581.18	112.27	Final Hydro-static

Recovery

Length (ft)	Description	Volume (bbl)
60.00	GOCM, 15%G 25%O 60%M	0.82
505.00	GSOCMV, 35%G 10%O 10%M 45%W	6.90
1275.00	GSVMCO, 20%G 10%W 5%M 65%O	17.42
0.00	125' GIP	0.00

* Recovery from multiple tests

Gas Rates

	Choke (inches)	Pressure (psig)	Gas Rate (Mcf/d)

QUALITY OILWELL CEMENTING, INC.

Federal Tax I.D.# 20-2886107

Phone 785-483-2025
Cell 785-324-1041

Home Office P.O. Box 32 Russell, KS 67665

No. 449

Date	6-12-14	Sec.	18	Twp.	15	Range	13	County	Russell	State	KS	On Location	3:30 AM	Finish	5:45 AM	
Lease	Weeks Faust							Well No.	6	Location	Russell Sto Wntok set BO					
Contractor	Sutherland							3	Owner	3E Yg IV Wnto						
Type Job	Surface							To Quality Oilwell Cementing, Inc. You are hereby requested to rent cementing equipment and furnish cementer and helper to assist owner or contractor to do work as listed.								
Hole Size	12 1/4		T.D.	795		Charge To	Main Oil									
Csg.	8 5/8		Depth	795		Street	Main Oil									
Tbg. Size			Depth			City	State									
Tool			Depth			The above was done to satisfaction and supervision of owner agent or contractor.										
Cement Left in Csg.	30ft		Shoe Joint	30ft		Cement Amount Ordered	325 60/40									
Meas Line			Displace	48.5 BBL		36LL 7% gel										
EQUIPMENT													Common			
Pumptrk	20	No.	Cementer	Matt		Poz. Mix										
			Helper													
Bulktrk	4	No.	Driver	Nick		Gel.										
			Driver													
Bulktrk	24	No.	Driver	Lonnie		Calcium										
			Driver													
JOB SERVICES & REMARKS													Hulls			
Remarks:													Salt			
Rat Hole													Flowseal			
Mouse Hole													Kol-Seal			
Centralizers													Mud CLR 48			
Baskets													CFL-117 or CD110 CAF 38			
D/V or Port Collar													Sand			
Cement did													Handling			
Circulate													Mileage			
													8 3/8			
													FLOAT EQUIPMENT			
													Guide Shoe			
													Centralizer			
													Baskets			
													AFU Inserts			
													Float Shoe			
													Latch Down			
													Rubber Plug			
													Pumptrk Charge			
													Mileage			
													Tax			
													Discount			
													Total Charge			
X Signature	[Signature]															

QUALITY OILWELL CEMENTING, INC.

Federal Tax I.D.# 20-2886107

Phone 785-483-2025
Cell 785-324-1041

Home Office P.O. Box 32 Russell, KS 67665

No. 142

Date	Sec.	Twp.	Range	County	State	On Location	Finish
6-18-14	18	15	13	Russell	KANSAS		1:45 AM
				Location Russell KS. 11 S. 2 1/2 E 1/2 N WINDO			

Lease	Weeks TRUST	Well No.	#6	Owner	To Quality Oilwell Cementing, Inc. You are hereby requested to rent cementing equipment and furnish cementer and helper to assist owner or contractor to do work as listed.
Contractor	SOUTH WIND DRIG. Rig # 3	Type Job	PRODUCTION STRING.	Charge To	MAI OIL OPERATIONS TR.
Hole Size	7 7/8	T.D.	3330'	Street	
Csg.	5 1/2 New	Depth	@ 3330'	City	State
Tbg. Size	14 # csg.	Depth	8 1/2 @ 795'	The above was done to satisfaction and supervision of owner agent or contractor.	
Tool	LATCH Down plug 155'	Depth	3311	Cement Amount Ordered 160 SX 60/40 10% SALT	
Cement Left in Csg.	19.21	Shoe Joint	19.21	22 GAL 1/4" EM-Seal Per SX	
Meas Line	80.80	Displace	80.80/82L	Common	

EQUIPMENT			
Pumptrk	18	No. Cementer	Glenn G.
		Helper	GODY, B.
Bulktrk	1	No. Driver	DOUG, H.
		Driver	
Bulktrk		No. Driver	
		Driver	

JOB SERVICES & REMARKS		
Remarks:		Hulls
Rat Hole	30 SX	Salt
Mouse Hole		Flowseal
Centralizers	1 ← 10	Kol-Seal
Baskets		Mud CLR 48 / 1,000 GAL.
D/V or Port Collar	"N2" 795' @ 5/8 SURFACE	CFL-117 or CD110 CAF 38
	Ran 80 New JOINTS OF 14" 5/8 csg.	Sand
	Set @ 3330' Reelock Circ.	Handling
	DROP AFU BAIL CIRCULATE HR.	Mileage
	Pump 1,000 GAL MUD FLUSH	FLOAT EQUIPMENT
	Cement w/ 130 SX 60/40 10% SALT 22 gal.	Guide Shoe
	Clear-Line, Release LATCH DOWN	Centralizer
	PLUG + Displace A TOTAL OF	10 TURBO
	80, 3/4/BAL HD. LAMP PLUG	Baskets
	@ 1500 #, Release PRESSURE	AFU Inserts
	+ AFU + Plug - (Held)	Float Shoe
		Latch Down
		Pumptrk Charge
		Mileage

THANK-You!

X Signature *[Signature]*

Tax	
Discount	
Total Charge	