



Fall & Associates

Stake and Elevation Service

719 W. 5th Street

P.O. Box 404

Concordia, KS. 66901

1-800-536-2821

Date 5-15-14

Invoice Number 0513142

MURFIN DRILLING

Operator

1-SWD

Number

Pancini

Farm Name

Rawlins-KS

County-State

7

S

2s

T

36w

R

1980'FSL 1600'FWL

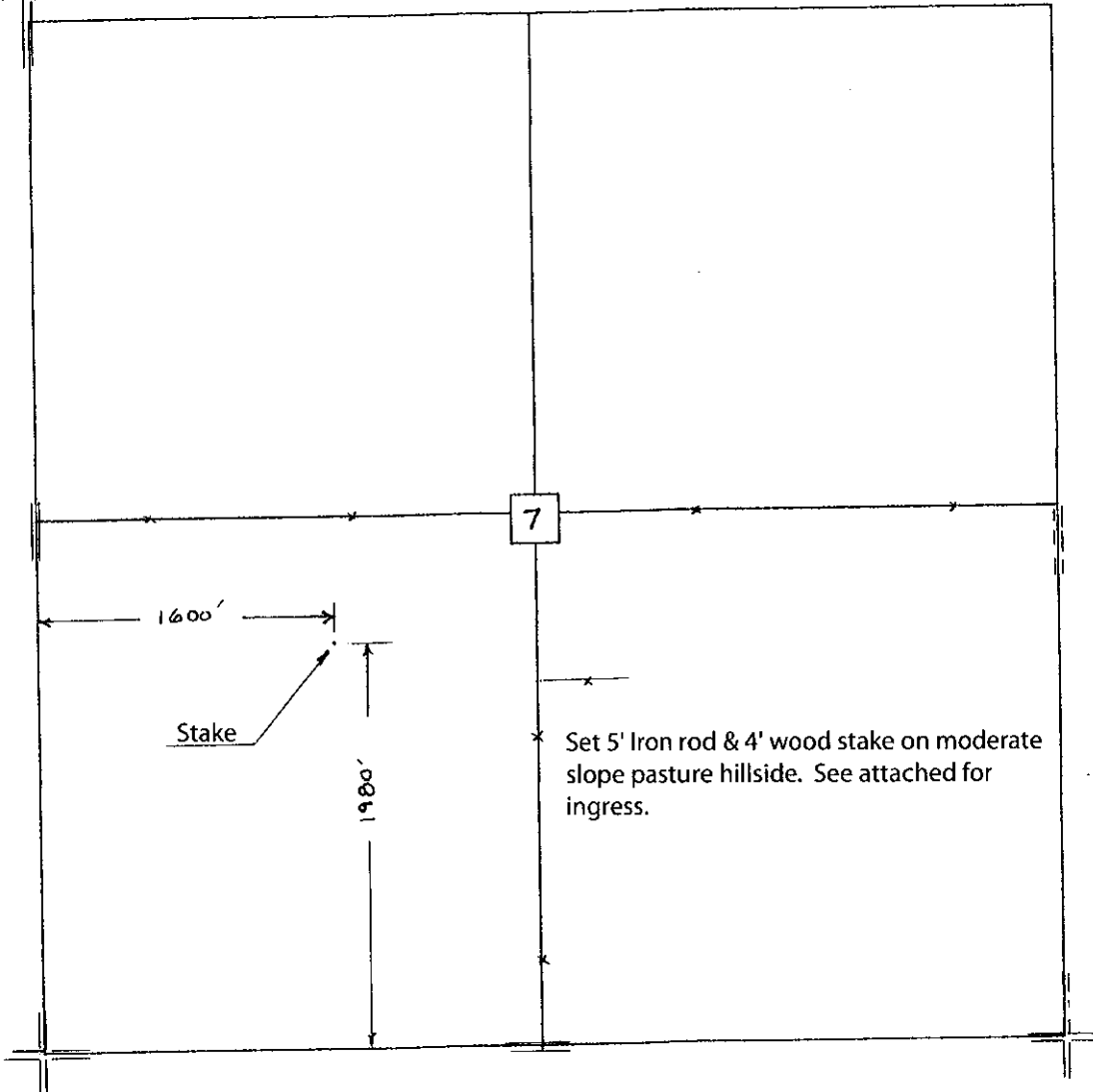
Location

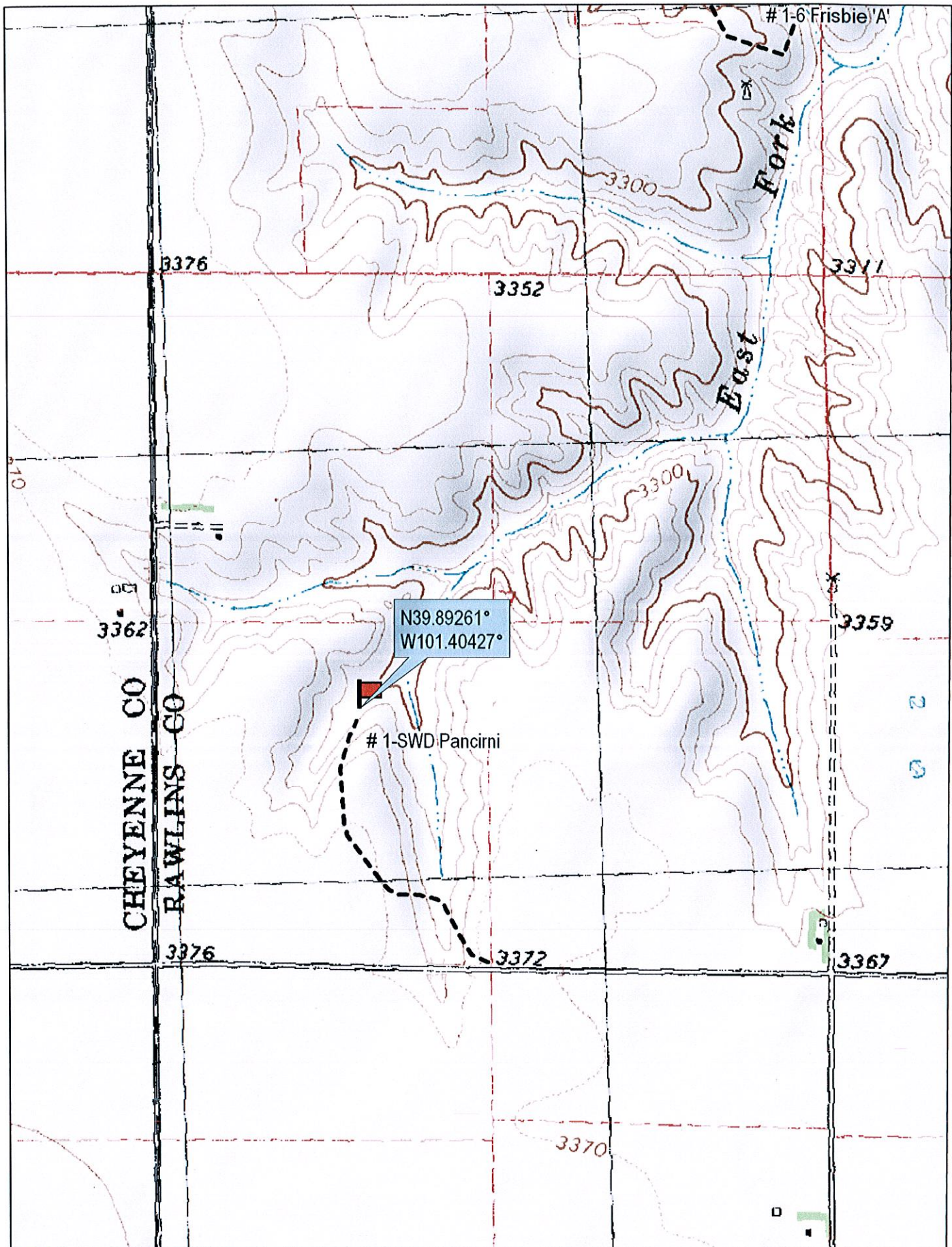
Murfin Drilling
250 N. Water
Suite 300
Wichita, KS. 67202

Elevation 3311 Gr.

Ordered By: Shauna

Scale 1"=1000'





N39.89261°
W101.40427°

1-SWD Pancirni



© 2002 DeLorme. 3-D TopoQuads ®. Data copyright of content owner.
www.delorme.com

