

Donley

Kansas Oil and Gas

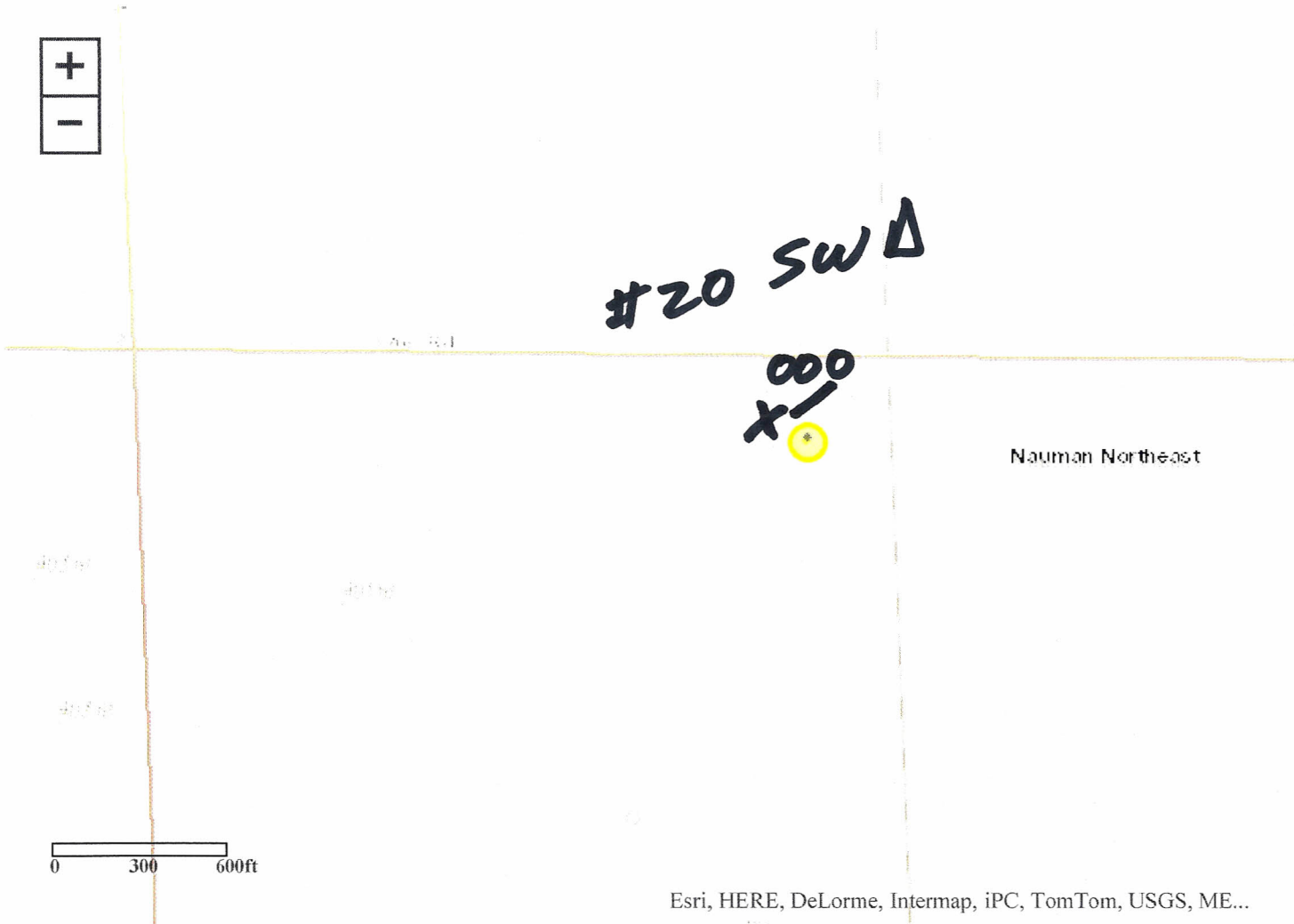
Kansas Geological Survey

Statewide View | Zoom to Location | Filter Wells | Label Wells | Download Wells | Print to PDF | Clear Highlight | Help

Layers Info Legend L

OIL or GAS WELL

API: 15-035-24608
 Lease: L&D Donley
 Well: 20-1
 Original Operator: Jones & Buck D.
 General Partner:
 Current Operator: Jones & Buck D.
 Field: WILDCAT
 T30S R5E Sec.
 NE NE NW
 Location: 4950 North, 297
 from SE corner
 Longitude (NAD27): -96.9065882
 Latitude (NAD27): 37.4319243
 County: Cowley
 Permit Date: Sep-05-2014
 Spud Date:
 Completion Date:
 Plugging Date:
 Well Type: OIL
 Status: Spudded
 Total Depth:
 Elevation: 1315.0000 GL
 Producing Formation: MISSISSIPPI
 IP Oil (bbl):
 IP Water (bbl):
 IP Gas (mcf):



Esri, HERE, DeLorme, Intermap, iPC, TomTom, USGS, ME...