



## DRILL STEM TEST REPORT

Prepared For: **Prater Oil & Gas Operations Inc.**

1303 N. Main St.  
Pratt KS 67124

ATTN: Scott Alberg

### **VerDon #1**

#### **15-29s-15w Pratt,KS**

Start Date: 2014.10.06 @ 00:12:03

End Date: 2014.10.06 @ 09:14:48

Job Ticket #: 57859                      DST #: 1

Trilobite Testing, Inc  
1515 Commerce Parkway Hays, KS 67601  
ph: 785-625-4778 fax: 785-625-5620

Printed: 2014.10.10 @ 10:36:50



**TRILOBITE TESTING, INC.**

# DRILL STEM TEST REPORT

Prater Oil & Gas Operations Inc.

**15-29s-15w Pratt,KS**

1303 N. Main St.  
Pratt KS 67124

**VerDon #1**

Job Ticket: 57859

**DST#: 1**

ATTN: Scott Alberg

Test Start: 2014.10.06 @ 00:12:03

## GENERAL INFORMATION:

Formation: **Mississippi**

Deviated: No Whipstock: ft (KB)

Time Tool Opened: 02:48:48

Time Test Ended: 09:14:48

Test Type: Conventional Bottom Hole (Initial)

Tester: Gary Pevoteaux

Unit No: 56

**Interval: 4454.00 ft (KB) To 4545.00 ft (KB) (TVD)**

Reference Elevations: 1961.00 ft (KB)

Total Depth: 4545.00 ft (KB) (TVD)

1952.00 ft (CF)

Hole Diameter: 7.88 inches Hole Condition: Fair

KB to GR/CF: 9.00 ft

**Serial #: 8352 Outside**

Press@RunDepth: 69.30 psig @ 4455.00 ft (KB)

Capacity: 8000.00 psig

Start Date: 2014.10.06

End Date:

2014.10.06

Last Calib.:

2014.10.06

Start Time: 00:12:08

End Time:

09:14:48

Time On Btm:

2014.10.06 @ 02:47:48

Time Off Btm:

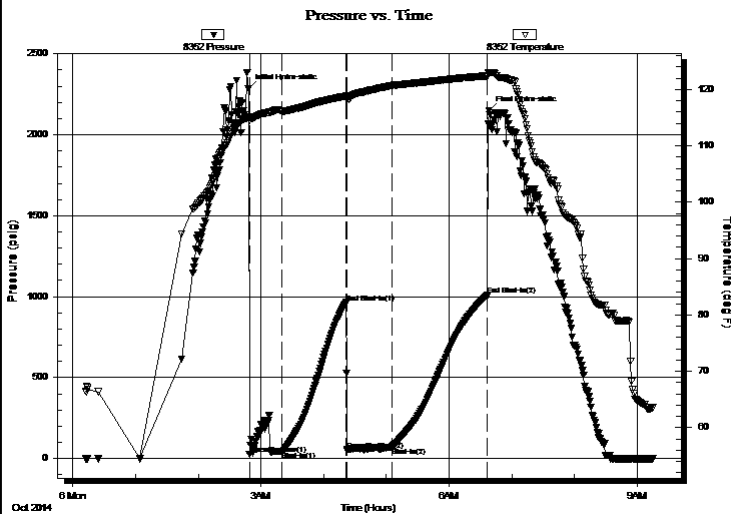
2014.10.06 @ 06:38:03

TEST COMMENT: IF: Fair blow . Surging increase to 10".

IS: No blow .

Fair blow . 4 - 9".

FS: No blow .



## PRESSURE SUMMARY

Time (Min.)	Pressure (psig)	Temp (deg F)	Annotation
0	2286.33	115.17	Initial Hydro-static
1	26.99	114.57	Open To Flow (1)
32	44.04	116.14	Shut-In(1)
94	963.82	118.81	End Shut-In(1)
95	52.96	118.42	Open To Flow (2)
138	69.30	120.68	Shut-In(2)
229	1007.95	122.42	End Shut-In(2)
231	2147.29	123.00	Final Hydro-static

## Recovery

Length (ft)	Description	Volume (bbl)
130.00	GOCM 19%g 11%o 70%m	0.64
0.00	175 ft. of GIP Clean oil @ top of tool	0.00

## Gas Rates

	Choke (inches)	Pressure (psig)	Gas Rate (Mcf/d)



**TRILOBITE TESTING, INC**

# DRILL STEM TEST REPORT

Prater Oil & Gas Operations Inc.

**15-29s-15w Pratt,KS**

1303 N. Main St.  
Pratt KS 67124

**VerDon #1**

Job Ticket: 57859

**DST#: 1**

ATTN: Scott Alberg

Test Start: 2014.10.06 @ 00:12:03

## GENERAL INFORMATION:

Formation: **Mississippi**

Deviated: No Whipstock: ft (KB)

Time Tool Opened: 02:48:48

Time Test Ended: 09:14:48

Test Type: Conventional Bottom Hole (Initial)

Tester: Gary Pevoteaux

Unit No: 56

**Interval: 4454.00 ft (KB) To 4545.00 ft (KB) (TVD)**

Reference Elevations: 1961.00 ft (KB)

Total Depth: 4545.00 ft (KB) (TVD)

1952.00 ft (CF)

Hole Diameter: 7.88 inches Hole Condition: Fair

KB to GR/CF: 9.00 ft

**Serial #: 8370 Inside**

Press@RunDepth: psig @ 4455.00 ft (KB)

Capacity: 8000.00 psig

Start Date: 2014.10.06

End Date:

2014.10.06

Last Calib.:

2014.10.06

Start Time: 00:06:58

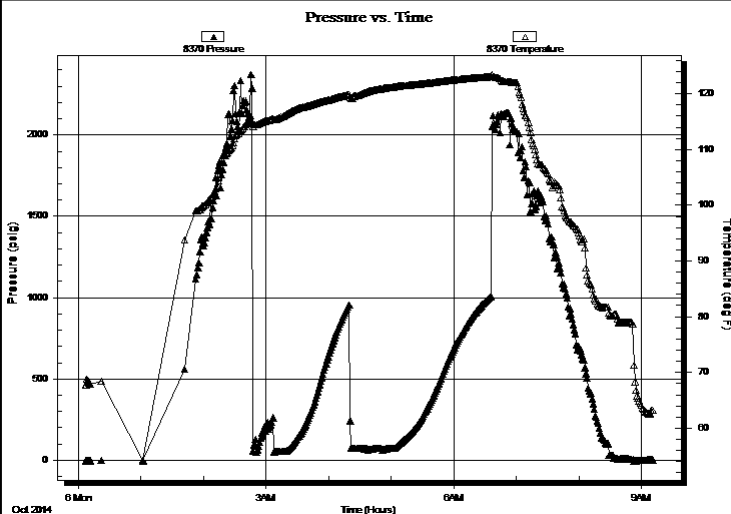
End Time:

09:11:23

Time On Btm:

Time Off Btm:

**TEST COMMENT:** IF:Fair blow . Surging increase to 10".  
IS:No blow .  
Fair blow . 4 - 9".  
FS:No blow .



## PRESSURE SUMMARY

Time (Min.)	Pressure (psig)	Temp (deg F)	Annotation

## Recovery

Length (ft)	Description	Volume (bbl)
130.00	GOCM 19%g 11%o 70%m	0.64
0.00	175 ft. of GIP Clean oil @ top of tool	0.00

## Gas Rates

Choke (inches)	Pressure (psig)	Gas Rate (Mcf/d)



**TRILOBITE  
TESTING, INC.**

# DRILL STEM TEST REPORT

**TOOL DIAGRAM**

Prater Oil & Gas Operations Inc.

**15-29s-15w Pratt,KS**

1303 N. Main St.  
Pratt KS 67124

**VerDon #1**

Job Ticket: 57859

**DST#: 1**

ATTN: Scott Alberg

Test Start: 2014.10.06 @ 00:12:03

## Tool Information

Drill Pipe:	Length: 4238.00 ft	Diameter: 3.80 inches	Volume: 59.45 bbl	Tool Weight: 2400.00 lb
Heavy Wt. Pipe:	Length: 0.00 ft	Diameter: 0.00 inches	Volume: 0.00 bbl	Weight set on Packer: 24000.00 lb
Drill Collar:	Length: 217.00 ft	Diameter: 2.25 inches	Volume: 1.07 bbl	Weight to Pull Loose: 89000.00 lb
			<u>Total Volume: 60.52 bbl</u>	Tool Chased 0.00 ft
Drill Pipe Above KB:	21.00 ft			String Weight: Initial 76000.00 lb
Depth to Top Packer:	4454.00 ft			Final 77000.00 lb
Depth to Bottom Packer:	ft			
Interval between Packers:	91.00 ft			
Tool Length:	111.00 ft			
Number of Packers:	2	Diameter: 6.75 inches		

Tool Comments:

## Tool Description

Tool Description	Length (ft)	Serial No.	Position	Depth (ft)	Accum. Lengths
Change Over Sub	1.00			4435.00	
Shut In Tool	5.00			4440.00	
Hydraulic tool	5.00			4445.00	
Packer	4.00			4449.00	20.00 Bottom Of Top Packer
Packer	5.00			4454.00	
Stubb	1.00			4455.00	
Recorder	0.00	8352	Outside	4455.00	
Recorder	0.00	8370	Inside	4455.00	
Perforations	6.00			4461.00	
Blank Spacing	63.00			4524.00	
Perforations	16.00			4540.00	
Bullnose	5.00			4545.00	91.00 Bottom Packers & Anchor

**Total Tool Length: 111.00**



**TRILOBITE  
TESTING, INC**

# DRILL STEM TEST REPORT

**FLUID SUMMARY**

Prater Oil & Gas Operations Inc.

**15-29s-15w Pratt,KS**

1303 N. Main St.  
Pratt KS 67124

**VerDon #1**

Job Ticket: 57859

**DST#: 1**

ATTN: Scott Alberg

Test Start: 2014.10.06 @ 00:12:03

## Mud and Cushion Information

Mud Type: Gel Chem

Cushion Type:

Oil API:

deg API

Mud Weight: 9.00 lb/gal

Cushion Length:

ft

Water Salinity:

4000 ppm

Viscosity: 61.00 sec/qt

Cushion Volume:

bbbl

Water Loss: 10.39 in<sup>3</sup>

Gas Cushion Type:

Resistivity: 0.00 ohm.m

Gas Cushion Pressure:

psig

Salinity: 4000.00 ppm

Filter Cake: 0.20 inches

## Recovery Information

Recovery Table

Length ft	Description	Volume bbl
130.00	GOCM 19%g 11%o 70%m	0.639
0.00	175 ft. of GIP Clean oil @ top of tool	0.000

Total Length: 130.00 ft

Total Volume: 0.639 bbl

Num Fluid Samples: 0

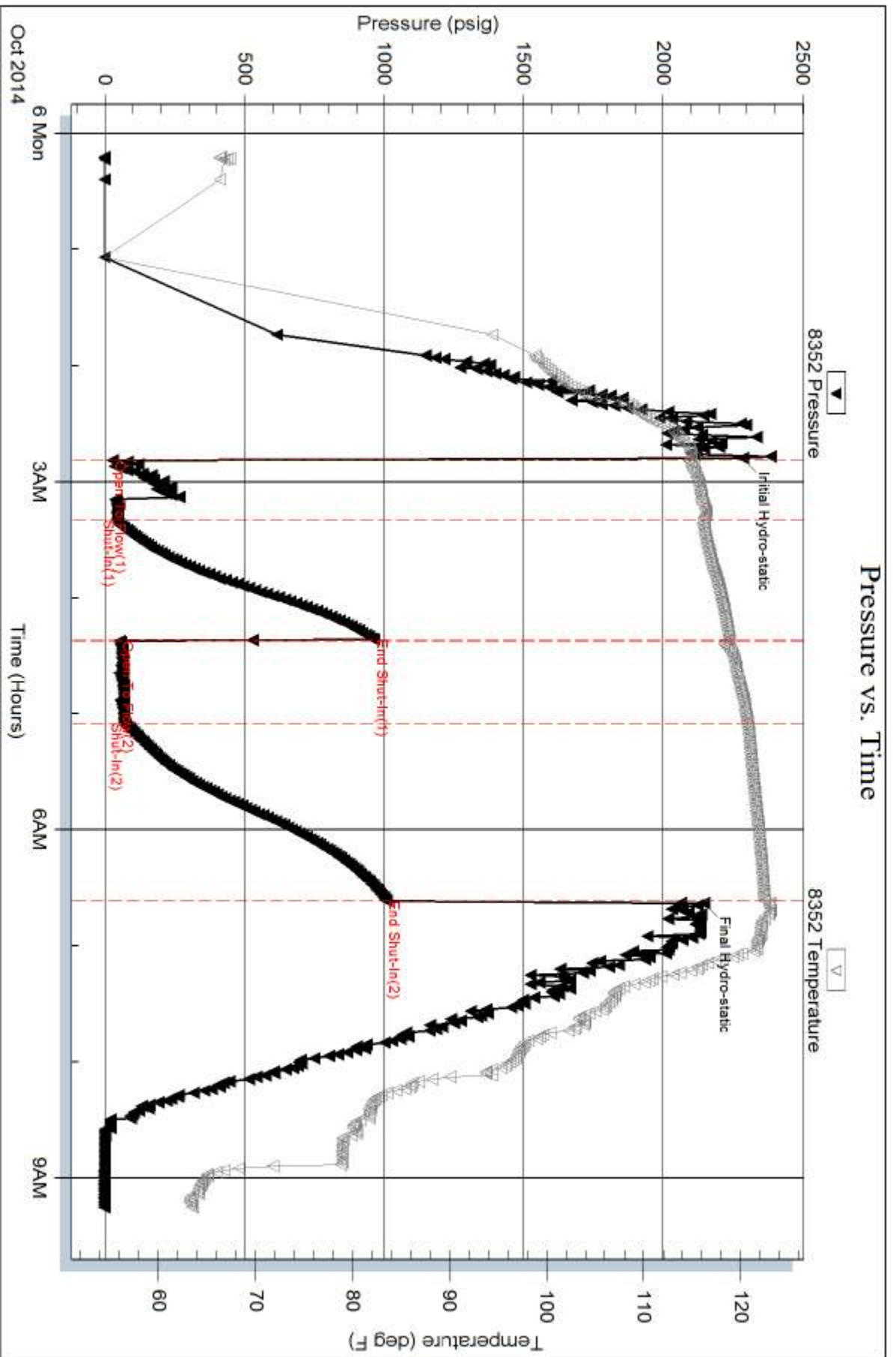
Num Gas Bombs: 0

Serial #: none

Laboratory Name:

Laboratory Location:

Recovery Comments:



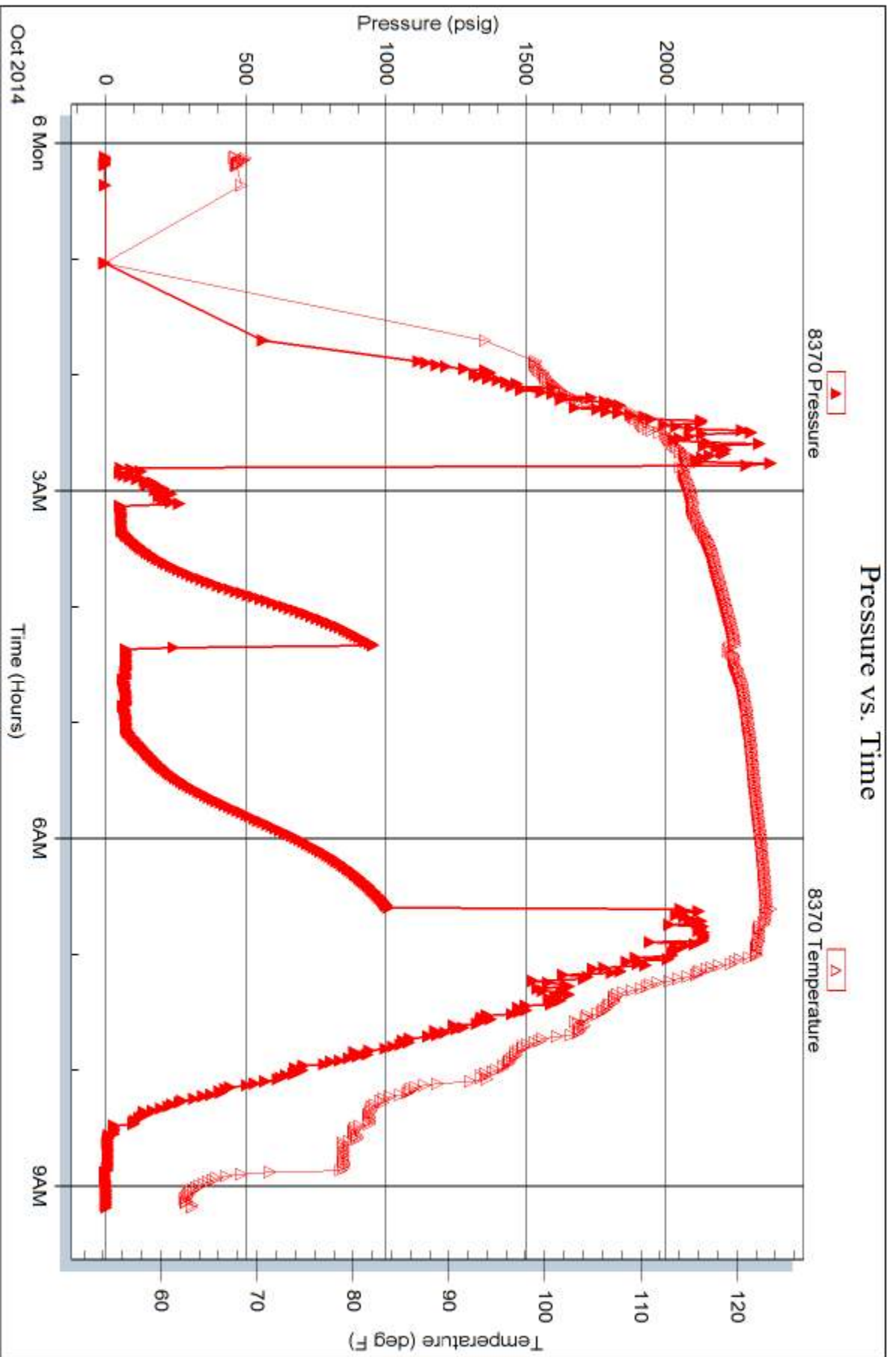
Serial #: 8370

Inside

Prater Oil & Gas Operations, Inc.

VerDon #1

DST Test Number: 1



Trilobite Testing, Inc

Ref. No: 57859

Printed: 2014, 10, 10 @ 10:36:51





# TRILOBITE TESTING INC.

1515 Commerce Parkway • Hays, Kansas 67601

## Test Ticket

NO. 57859

4/10

Well Name & No. Verdon #1 Test No. 1 Date 10-6-14  
 Company PRATER OIL & GAS OPERATIONS INC. Elevation 1961 KB 1952 GL  
 Address 1303 N. MAIN ST. PRATT KS. 67124  
 Co. Rep / Geo. TALBOT / SCOTT ALBERG Rig STERLING DRUG #4  
 Location: Sec. 13 Twp. 29S Rge. 15W Co. PRATT State KS.

Interval Tested 4454 - 4545' Zone Tested MISS.  
 Anchor Length 91' Drill Pipe Run 4238' Mud Wt. 9.3  
 Top Packer Depth 4449' Drill Collars Run 217' Vis 61  
 Bottom Packer Depth 4454' Wt. Pipe Run 0 WL 10.4 cc  
 Total Depth 4545' Chlorides 4,000 ppm System LCM 4 #  
 Blow Description IF: Fair blow. Surging increase to 10".  
IST: No blow.  
FF: Fair blow. 4 - 9". FST: No blow.

Rec	Feet of	%gas	%oil	%water	%mud
<u>125</u>	<u>Gas in pipe</u>				
<u>130</u>	<u>GOCM</u>	<u>19</u>	<u>11</u>		<u>70</u>
	<u>Clean oil @ Top of Tool</u>				

Rec Total 130 Fluid BHT 122° Gravity N/A API RW P.C. @ °F Chlorides 4,000 ppm  
 (A) Initial Hydrostatic 7286  Test 1250 T-On Location 2100  
 (B) First Initial Flow 27  Jars \_\_\_\_\_ T-Started 0012  
 (C) First Final Flow 44  Safety Joint \_\_\_\_\_ T-Open 0248  
 (D) Initial Shut-In 964  Circ Sub \_\_\_\_\_ T-Pulled 0637  
 (E) Second Initial Flow 53  Hourly Standby \_\_\_\_\_ T-Out 0914  
 (F) Second Final Flow 69  Mileage 50m x 2 155 Comments Requested the tools  
 (G) Final Shut-In 1008  Sampler \_\_\_\_\_ to be left. Then no tests.  
 (H) Final Hydrostatic 2147  Straddle \_\_\_\_\_  Ruined Shale Packer \_\_\_\_\_  
 Shale Packer \_\_\_\_\_  Ruined Packer \_\_\_\_\_  
 Extra Packer \_\_\_\_\_  Extra Copies \_\_\_\_\_  
 Initial Open 30  Extra Recorder \_\_\_\_\_ Sub Total 0  
 Initial Shut-In 60  Day Standby \_\_\_\_\_ Total 1405  
 Final Flow 45  Accessibility \_\_\_\_\_ MP/DST Disc't \_\_\_\_\_  
 Final Shut-In 90 Sub Total 1405

Approved By \_\_\_\_\_ Our Representative Cory P. ...  
 Trilobite Testing Inc. shall not be liable for damaged of any kind of the property or personnel of the one for whom a test is made, or for any loss suffered or sustained, directly or indirectly, through the use of its equipment, or its statements or opinion concerning the results of any test, tools lost or damaged in the hole shall be paid for at cost by the party for whom the test is made.