

Tim J. Lauer

Petroleum Geologist

Office 316.832.0530
Cell 316.253.1275

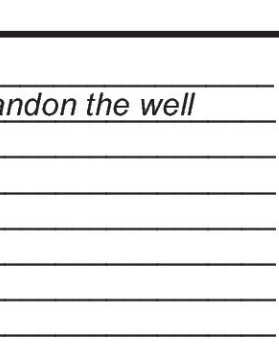
GEOLOGIST'S REPORT

DRILLING TIME AND SAMPLE LOG

COMPANY	Coral Production Corporation	
LEASE	#16-1 Bigge	
FIELD		
LOCATION	555' FSL, 1405' FEL of Section	
SEC	16	TWSP 7s RGE 18W
COUNTY	Rooks	STATE Kansas
CONTRACTOR	Discovery Drilling Rig #2	
SPUD	10-27-2014	COMP 11-4-2014
RTD	3428'	LTD 3428'
MUD UP	2660'	TYPE MUD Chemical
SAMPLES SAVED FROM	2700' TO RTD	
DRILLING TIME KEPT FROM	2700' TO RTD	
SAMPLES EXAMINED FROM	2700' TO RTD	
GEOLOGICAL SUPERVISION FROM	2750' to RTD	
GEOLOGIST ON WELL	Tim J. Lauer	

ELEVATIONS	KB 1877'
DF	
GL	1869'
Measurements Are All From	Kelly Bushing
CASING	
CONDUCTOR	13-3/8" @ 54'
SURFACE	8-5/8" @ 1332'
PRODUCTION	none
ELECTRICAL SURVEYS	Nabors: OH Sonic Log (Engr: Ian Mabb)

FORMATION TOPS	ELECTRIC LOG	SAMPLE LOG
Anhydrite	1331 (+546)	1326 (+551)
Topeka	2835 (-958)	2836 (-959)
Heebner	3041 (-1164)	3043 (-1166)
Toronto	3064 (-1187)	3066 (-1189)
Lansing	3081 (-1204)	3082 (-1205)
Base Ks. City	3305 (-1428)	3306 (-1429)
Arbuckle	3386 (-1509)	3387 (-1510)
Total Depth	3428 (-1551)	3428 (-1551)

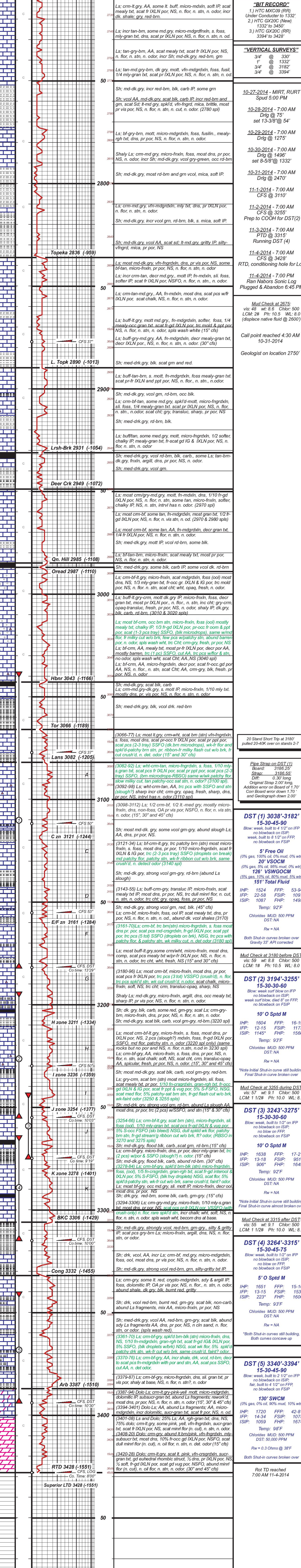


REMARKS
Due to DST results and log analysis, operator elected plug and abandon the well without further testing the location.

Respectfully submitted,
Tim J. Lauer
Tim J. Lauer
11-4-2014

LEGEND

Anhydrite	Sandstone	Limestone	Shale	Carb Sh	Cherty LS	Chert	Dolomite
-----------	-----------	-----------	-------	---------	-----------	-------	----------



SPUD 5:00 PM 10-27-2014
RTD 7:00 AM 11-4-2014

"BIT RECORD"
1.) HTC MXC09 (RR)
Under Conductor to 1332'
2.) HTC GX20C (New)
1332 to 3450
3.) HTC GX20C (RR)
3394' to 3428'

"VERTICAL SURVEYS"
3/4" @ 1332'
3/4" @ 3182'
3/4" @ 3394'

10-27-2014 - MIRT, RURT
Spud 5:00 PM

10-28-2014 - 7:00 AM
Drig @ 75'
set 13-3/8" @ 54'

10-29-2014 - 7:00 AM
Drig @ 1275'

10-30-2014 - 7:00 AM
Drig @ 1496'
set 8-5/8" @ 1332'

10-31-2014 - 7:00 AM
Drig @ 2470'

11-1-2014 - 7:00 AM
CFS @ 3110'

11-2-2014 - 7:00 AM
CFS @ 3255'
Prep to COOH for DST(2)

11-3-2014 - 7:00 AM
PTD @ 3315'
Running DST (4)

11-4-2014 - 7:00 AM
CFS @ 3428'
RTD, conditioning hole for Log

11-4-2014 - 7:00 PM
Ran Nabors Sonic Log
Plugged & Abandon 6:45 PM

Mud Check at 2875:
vis: 49 WT: 8.8 Chlor: 500
LCM: 2# Ph: 10.5 WL: 8.0
(displace native fluid @ 2600)

Call point reached 4:30 AM
10-31-2014

Geologist on location 2750'

20 Stand Short Trip at 3180'
pulled 20-40K over on stands 2-7

Pipe Strap on DST (1)
Board: 3186.25"
Strap: 3186.55"
Diff: 0.30" long
Original Strap 2.00" long.
Addition error on Board of 1.70"
Cora Board error down 1.70"
and Geograph down 2.00"

DST (1) 3038'-3182'
15-30-45-90
Blow: weak, built to 4 1/2" on IFF
no blowback on ISIP;
weak, built to 8 1/2" on FFP,
no blowback on FSIP

5' Free Oil
100% gas, 100% oil, 90% mud, 0% wtr
20' VSOCM
(0% gas, 5% oil, 95% mud, 0% wtr)
126' VSWGOCM
(5% gas, 10% oil, 80% mud, 5% wtr)
151' Total Fluid

IHP: 1524 FFP: 53-94
IFP: 22-58 FSIP: 1097
ISIP: 1087 FHP: 1495

Temp: 92°F
Chlorides: MUD: 500 PPM
DST: NA
Rw = NA

Both Shut-in curves broken over
Gravity 33' after corrected

Mud Check at 3180 before DST:
vis: 57 WT: 9.1 Chlor: 500
LCM: 1# Ph: 10.5 WL: 8.0

DST (3) 3194'-3255'
15-30-30-60
Blow: weak, surf blow on IFF
no blowback on ISIP;
weak surf blow, died 8" on FFP,
no blowback on FSIP

10' O Spd M

IHP: 1604 FFP: 16-19
IFP: 12-15 FSIP: 1173
ISIP: 1145* FHP: 1560

Temp: 93°F
Chlorides: MUD: 500 PPM
DST: NA
Rw = NA

*Note Initial Shut-in curve still building.
Final Shut-in curve broken over

Mud Check at 3255 during DST:
vis: 57 WT: 9.1 Chlor: 500
LCM: 1 1/2# Ph: 10.0 WL: 8.4

DST (3) 3243'-3275'
15-30-30-60
Blow: weak, built to 1 1/2" on IFF
no blowback on ISIP;
no blow on FFP,
no blowback on FSIP

10' O Spd M

IHP: 1638 FFP: 16-19
IFP: 13-18 FSIP: 951*
ISIP: 906* FHP: 1649

Temp: 92°F
Chlorides: MUD: 500 PPM
DST: NA
Rw = NA

*Note Initial Shut-in curve still building.
Final Shut-in curve almost broken over

Mud Check at 3315 after DST:
vis: 55 WT: 9.1 Chlor: 500
LCM: 1 1/2# Ph: 10.0 WL: 8.8

DST (4) 3264'-3315'
15-30-45-75
Blow: weak, built to 2 1/2" on IFF
no blowback on ISIP;
no blow on FFP,
no blowback on FSIP

5' O Spd M

IHP: 1651 FFP: 15-16
IFP: 13-15 FSIP: 153*
ISIP: 223* FHP: 1606

Temp: 93°F
Chlorides: MUD: 500 PPM
DST: NA
Rw = NA

*Both Shut-in curves still building.
Both curves concave up

DST (5) 3340'-3394'
15-30-45-90
Blow: weak, built to 2 1/2" on IFF
no blowback on ISIP;
fair, built to 4 1/2" on FFP,
no blowback on FSIP

130' SWCM
(0% gas, 0% oil, 90% mud, 10% wtr)

IHP: 1720 FFP: 42-81
IFP: 14-34 FSIP: 1075
ISIP: 1059 FHP: 1674

Temp: 98°F
Chlorides: MUD: 500 PPM
DST: 50,000 PPM
Rw = 0.3 Ohms @ 38F

Both Shut-in curves broken over

Rot TD reached
7:00 AM 11-4-2014

COMPANY & WELL	Coral Prod Corp #16-1 Bigge
LOCATION	555' FSL, 1405' FEL of Section
SEC	16 TWSP 7s RGE 18W
COUNTY	Rooks STATE Kansas

ELEVATIONS	KB 1877'
GL	1869'

