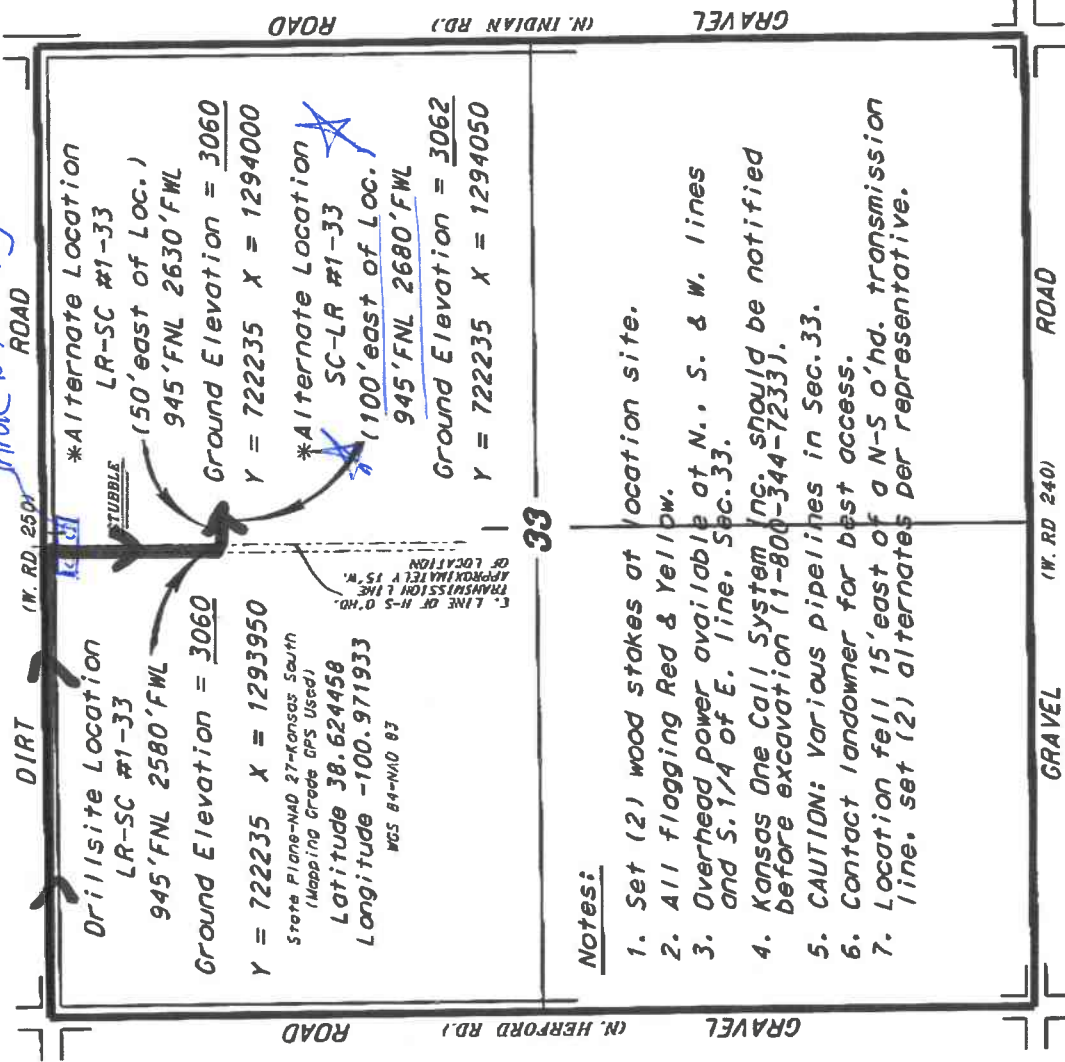


GRAND MESA OPERATING COMPANY

LR-SC, SC-LR LEASE
 N. 1/2, SECTION 33, T16S, R33W
 SCOTT COUNTY, KANSAS

JANK BATTERY



Drill-site Location

LR-SC #1-33
 945'FNL 2580'FWL
 Ground Elevation = 3060

Y = 722235 X = 1293950

State Plane-NAD 27-Kansas South
 (Mapping Grade GPS Used)
 Latitude 38.624458
 Longitude -100.971933
 NGS 84-NAD 83

***Alternate Location**

LR-SC #1-33
 (50' east of Loc.)
 945'FNL 2630'FWL
 Ground Elevation = 3060
 Y = 722235 X = 1294000

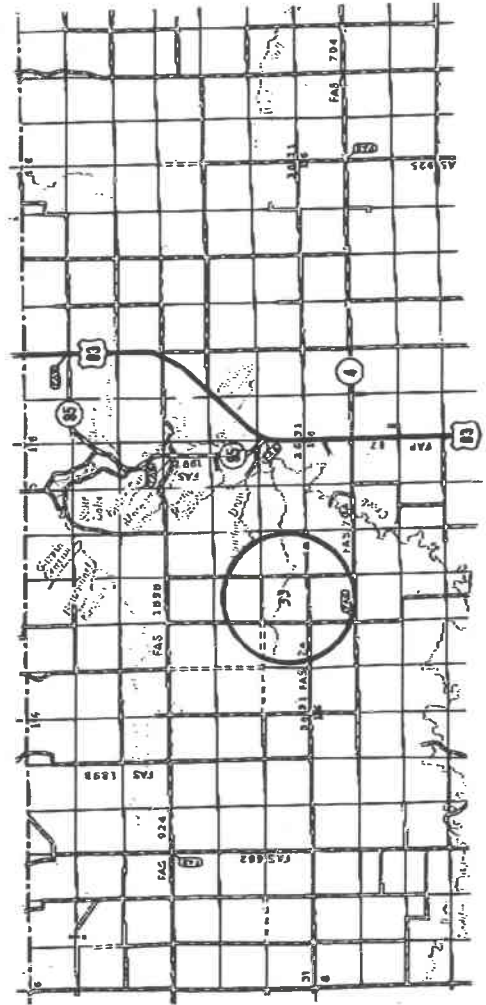
***Alternate Location**

SC-LR #1-33
 (1100' east of Loc.)
 945'FNL 2680'FWL
 Ground Elevation = 3062
 Y = 722235 X = 1294050

Notes:

1. Set (2) wood stakes at location site.
2. All flogging Red & Yellow.
3. Overhead power available at N., S. & W. lines and S. 1/4 of E. line, Sec. 33.
4. Kansas One Call System Inc. should be notified before excavation (1-800-344-7233).
5. CAUTION: Various pipelines in Sec. 33.
6. Contact landowner for best access.
7. Location fell 15' east of a N-S o'hd. transmission line, set (2) alternates per representative.

*Ingress and egress to location as shown on this plot is per usage only and may not be legally opened for public use. Contact landowner, tenant and county road department for access.



• Centralizing data is based upon the best maps and photographs available to us and upon a regular section of land containing the same.
 • Approximate section lines were determined using the corner standards of care of all field surveys. The section corners, which establish the precise section lines, were not necessarily located, and the exact location of the drilling location in the section may vary. Therefore, the Central Kansas Oilfield Services, Inc., its officers and employees are not liable for any damages, costs and expenses and all liabilities released from any liability from incidental or consequential damages.
 • Elevation derived from National Geodetic Vertical Datum.