



**TRILOBITE
TESTING, INC**

DRILL STEM TEST REPORT

Vincent Oil Corporation
155 North Market Suite 700
Wichita, KS
67202
ATTN: Ken LaBlanc

8/29S/22W Ford, KS

Smith 2-8

Job Ticket: 54128

DST#: 2

Test Start: 2014.07.29 @ 18:38:19

GENERAL INFORMATION:

Formation: **Miss./ Dolomite**

Deviated: No Whipstock: 0.00 ft (KB)

Time Tool Opened: 23:13:49

Time Test Ended: 07:54:34

Test Type: (Reset)

Tester: Matt Smith

Unit No: 53

Interval: 5300.00 ft (KB) To 5335.00 ft (KB) (TVD)

Reference Elevations: 2533.00 ft (KB)

Total Depth: 5335.00 ft (KB) (TVD)

2523.00 ft (CF)

Hole Diameter: 7.88 inches Hole Condition: Fair

KB to GR/CF: 10.00 ft

Serial #: 6773 Inside

Press@RunDepth: 88.12 psig @ 5301.00 ft (KB)

Capacity: 8000.00 psig

Start Date: 2014.07.29

End Date: 2014.07.30

Last Calib.: 2014.07.30

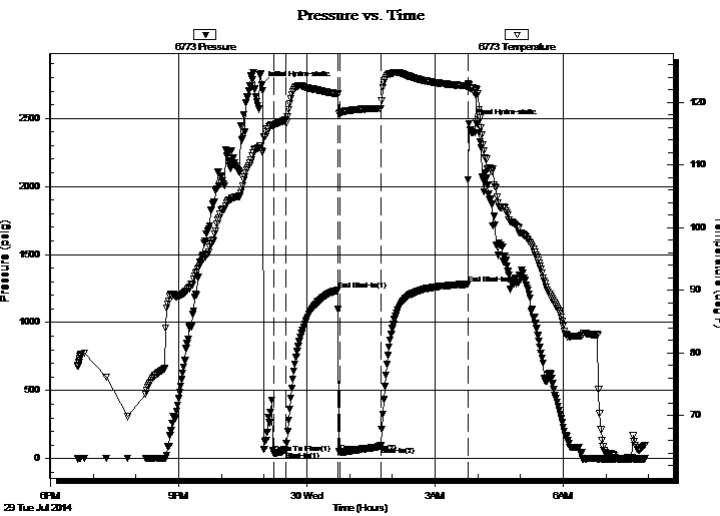
Start Time: 18:38:24

End Time: 07:54:34

Time On Btm: 2014.07.29 @ 22:57:04

Time Off Btm: 2014.07.30 @ 03:48:04

TEST COMMENT: IF: Strong blow . B.O.B. in 1 min.
IS: Weak blow . Surf., - 1/4". Bleed off in 3 1/2 mins.
FF: Strong blow . B.O.B. immediate. G.T.S. in 6 mins. Gauged gas, see gas report.
FS: Weak blow . Surf., - 2 1/2" . Bleed off in 10 mins.



PRESSURE SUMMARY

Time (Min.)	Pressure (psig)	Temp (deg F)	Annotation
0	2744.83	112.21	Initial Hydro-static
17	38.93	116.32	Open To Flow (1)
34	54.98	117.18	Shut-In(1)
107	1238.17	121.32	End Shut-In(1)
110	47.45	118.28	Open To Flow (2)
167	88.12	119.01	Shut-In(2)
290	1281.57	122.57	End Shut-In(2)
291	2461.07	122.75	Final Hydro-static

Recovery

Length (ft)	Description	Volume (bbl)
31.00	GOWCM 10%g 10%o 35%w 45%m	0.43
62.00	GOWCM 20%g 13%o 17%w 50%m	0.87
62.00	GOWCM 10%g 10%o 10%w 70%m	0.87
20.00	GOWCM 3%g 10%o 2%w 85%m	0.28
0.00	5,107' G.I.P. 100%g	0.00

* Recovery from multiple tests

Gas Rates

	Choke (inches)	Pressure (psig)	Gas Rate (Mcf/d)
First Gas Rate	0.13	3.00	6.51
Last Gas Rate	0.13	7.50	8.20
Max. Gas Rate	0.13	7.50	8.20



**TRILOBITE
TESTING, INC**

DRILL STEM TEST REPORT

FLUID SUMMARY

Vincent Oil Corporation

8/29S/22W Ford, KS

155 North Market Suite 700
Wichita, KS
67202
ATTN: Ken LaBlanc

Smith 2-8

Job Ticket: 54128

DST#: 2

Test Start: 2014.07.29 @ 18:38:19

Mud and Cushion Information

Mud Type: Gel Chem
Mud Weight: 9.00 lb/gal
Viscosity: 48.00 sec/qt
Water Loss: 11.59 in³
Resistivity: ohm.m
Salinity: 9100.00 ppm
Filter Cake: 0.20 inches

Cushion Type:
Cushion Length: ft
Cushion Volume: bbl
Gas Cushion Type:
Gas Cushion Pressure: psig

Oil API: deg API
Water Salinity: 56000 ppm

Recovery Information

Recovery Table

Length ft	Description	Volume bbl
31.00	GOWCM 10%g 10%o 35%w 45%m	0.435
62.00	GOWCM 20%g 13%o 17%w 50%m	0.870
62.00	GOWCM 10%g 10%o 10%w 70%m	0.870
20.00	GOWCM 3%g 10%o 2%w 85%m	0.281
0.00	5,107' G.I.P. 100%g	0.000

Total Length: 175.00 ft Total Volume: 2.456 bbl

Num Fluid Samples: 1 Num Gas Bombs: 1 Serial #: MAS Pratt

Laboratory Name: Caraway Laboratory Location: Liberal, KS

Recovery Comments: Gauged gas however it did not carry required 15# psi.

RW is .15 @ 64 degrees = 56000

Serial #: 6773

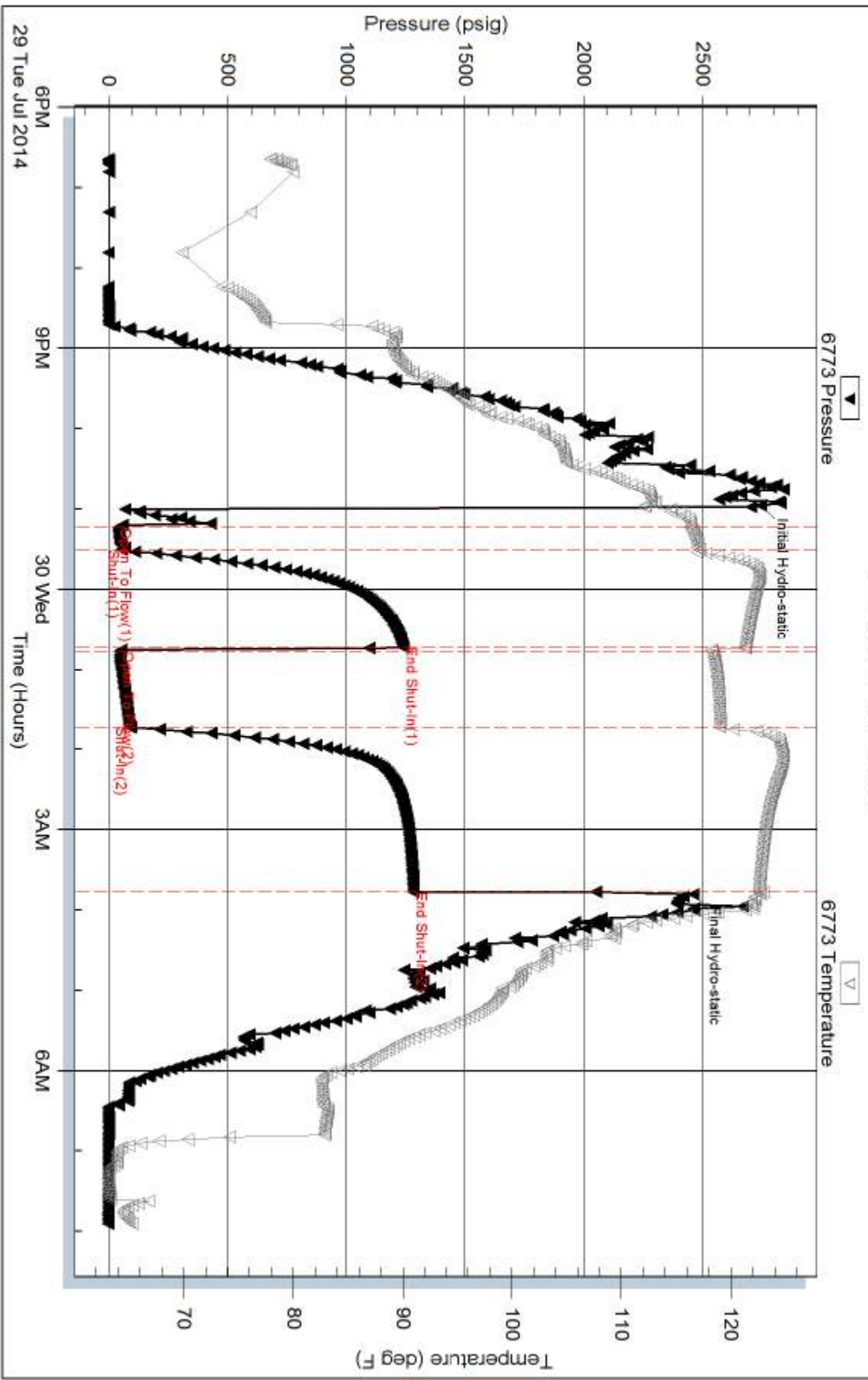
Inside

Vincent Oil Corporation

Smith 2-8

DST Test Number: 2

Pressure vs. Time



Trilobite Testing, Inc

Ref. No: 54128

Printed: 2014.07.30 @ 08:31:57