



VINCENT OIL CORPORATION



Scale 1:240 Imperial

Well Name: Zimmerman 2-8
Surface Location: 8-28s-23w NW SE NE NE
Bottom Location:
API: 15-057-20937-00-00
License Number: 5004
Spud Date: 7/21/2014 Time: 7:30 PM
Region:
Drilling Completed: 7/31/2014 Time: 12:47 PM
Surface Coordinates: 870 FNL & 335 FEL
Bottom Hole Coordinates:
Ground Elevation: 2481.00ft
K.B. Elevation: 2493.00ft
Logged Interval: 4150.00ft To: 5220.00ft
Total Depth: 5220.00ft
Formation: MISS
Drilling Fluid Type:

OPERATOR

Company: Vincent Oil Corporation
Address: 155 N. Market
Ste. 700
Wichita, KS 67202
Contact Geologist: Dick Jordan
Contact Phone Nbr: 316-262-3573
Well Name: Zimmerman 2-8
Location: 8-28s-23w NW SE NE NE API: 15-057-20937-00-00
Pool: Sanko Northeast
State: KS Country: USA

CONTRACTOR

Contractor: Duke Drilling Co., Inc.
Rig #: 1
Rig Type: Rotary
Spud Date: 7/21/2014 Time: 7:30 PM
TD Date: 7/31/2014 Time: 12:47 PM
Rig Release: 8/4/2014 Time: 12:00 AM

LOGGED BY

Company: Vincent Oil Corp.
Address: 155 N Market
Ste 700
Wichita, KS 67202
Phone Nbr: 316-262-3573
Logged By: Geologist Name: Tom Dudgeon

ELEVATIONS

K.B. Elevation: 2493.00ft Ground Elevation: 2481.00ft
 K.B. to Ground: 12.00ft

SURFACE CO-ORDINATES

Well Type: Vertical
 Longitude: -99.8520595 Latitude: 37.6292666
 N/S Co-ord: 870 FNL
 E/W Co-ord: 335 FEL

OPEN HOLE LOGS

Logging Company: Nabors Completion and Production Services, Co.
 Logging Engineer: Ian Mabb
 Truck #: 3802
 Logging Date: 7/31/2014 Time Spent: 5
 # Logs Run: 4 # Logs Run Successful: 4

LOGS RUN

Tool	Logged Interval	Logged Interval	Hours	Remarks	Run #
Dual Induction	0.00ft	5219.00ft	2.00		1
Comp Den/Neu	4100.00ft	5219.00ft	2.00		1
Micro	4100.00ft	5219.00ft	4.00		2
Sonic	0.00ft	5219.00ft	4.00		2

LOGGING OPERATION SUMMARY

Date	From	To	Description Of Operation
8/4/2014	0.00ft	5219.00ft	Logs ran successfully

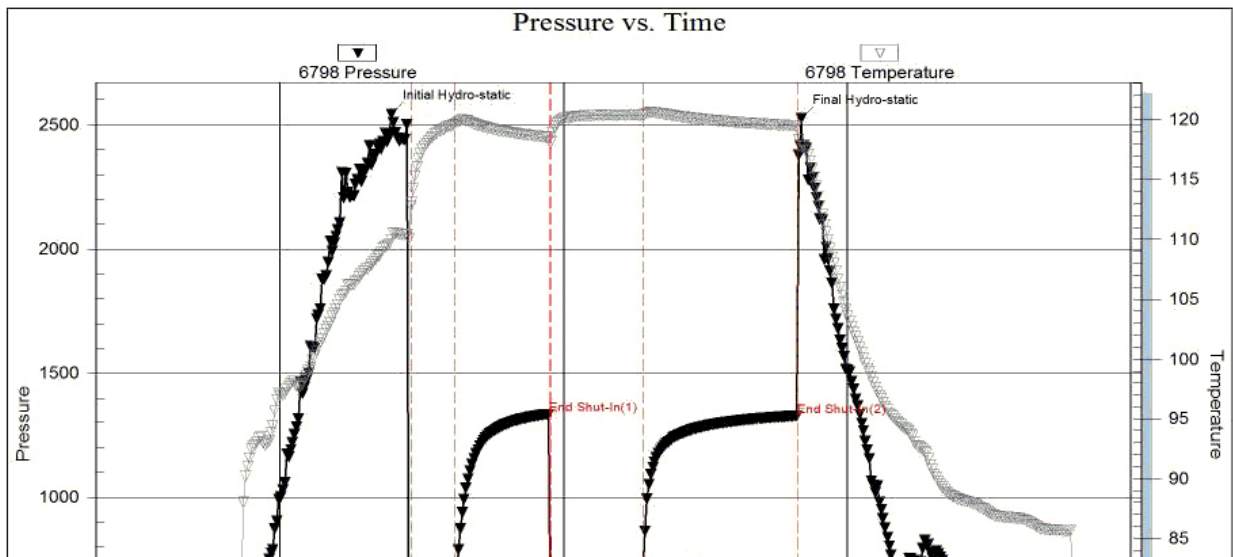
CASING SUMMARY

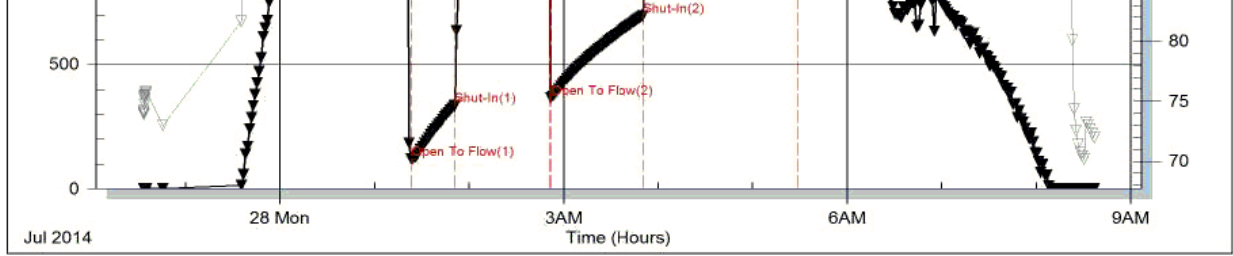
	Surface	Intermediate	Main		
Bit Size	12.25 in				
Hole Size			7.88 in		
	Size	Set At	Type	# of Joints	Drilled Out At
Surf Casing	8.625 in	647 ft	23#	15	12/30/1899 5:00 PM
Int Casing					
Prod Casing	4.5 in	5215 ft	11.6#	118	

CASING SEQUENCE

Type	Hole Size	Casing Size	At
Surface	12.25 in	8.63	647.00 ft
Production	7.88 in	4.50	5215.00 ft

Serial #: 6798 Inside Vincent Oil Corporation Zimmerman #2-8 DST Test Number: 1



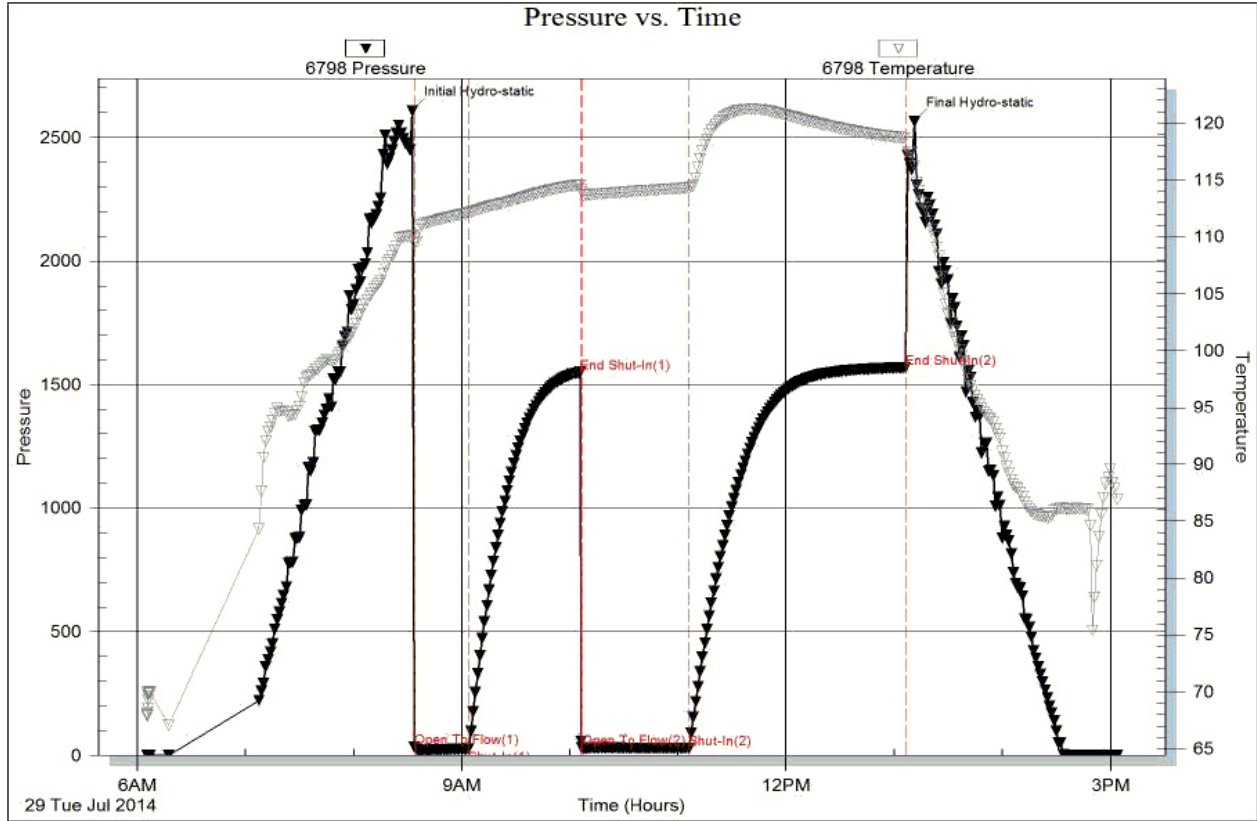


Trilobite Testing, Inc

Ref. No: 51814

Printed: 2014.08.04 @ 14:07:45

Serial #: 6798 Inside Vincent Oil Corporation Zimmerman #2-8 DST Test Number: 2

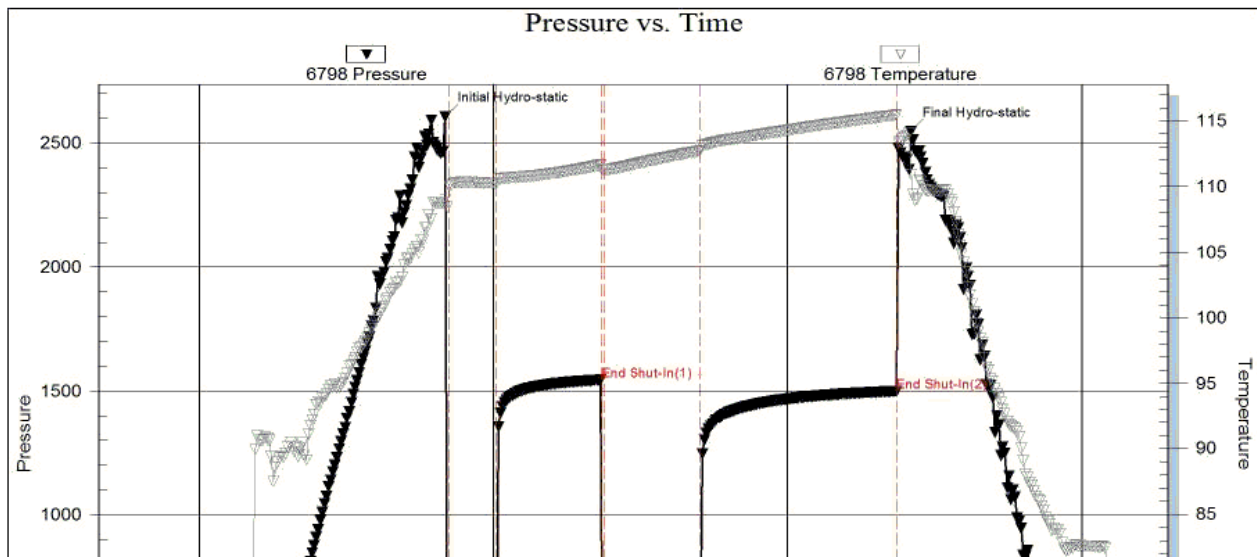


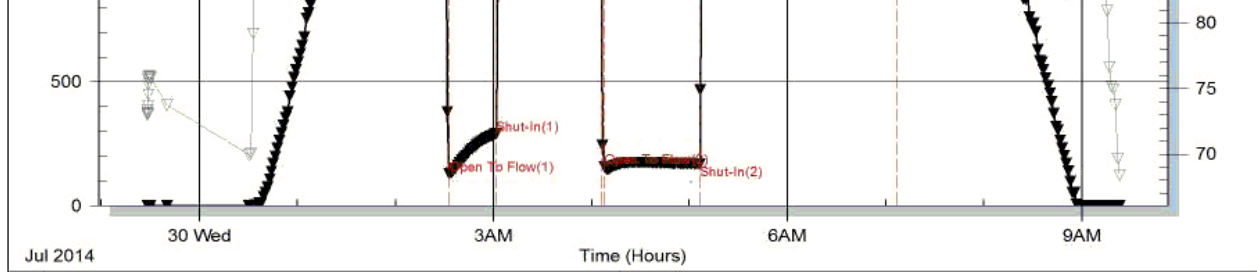
Trilobite Testing, Inc

Ref. No: 51816

Printed: 2014.08.04 @ 13:55:28

Serial #: 6798 Inside Vincent Oil Corporation Zimmerman #2-8 DST Test Number: 3



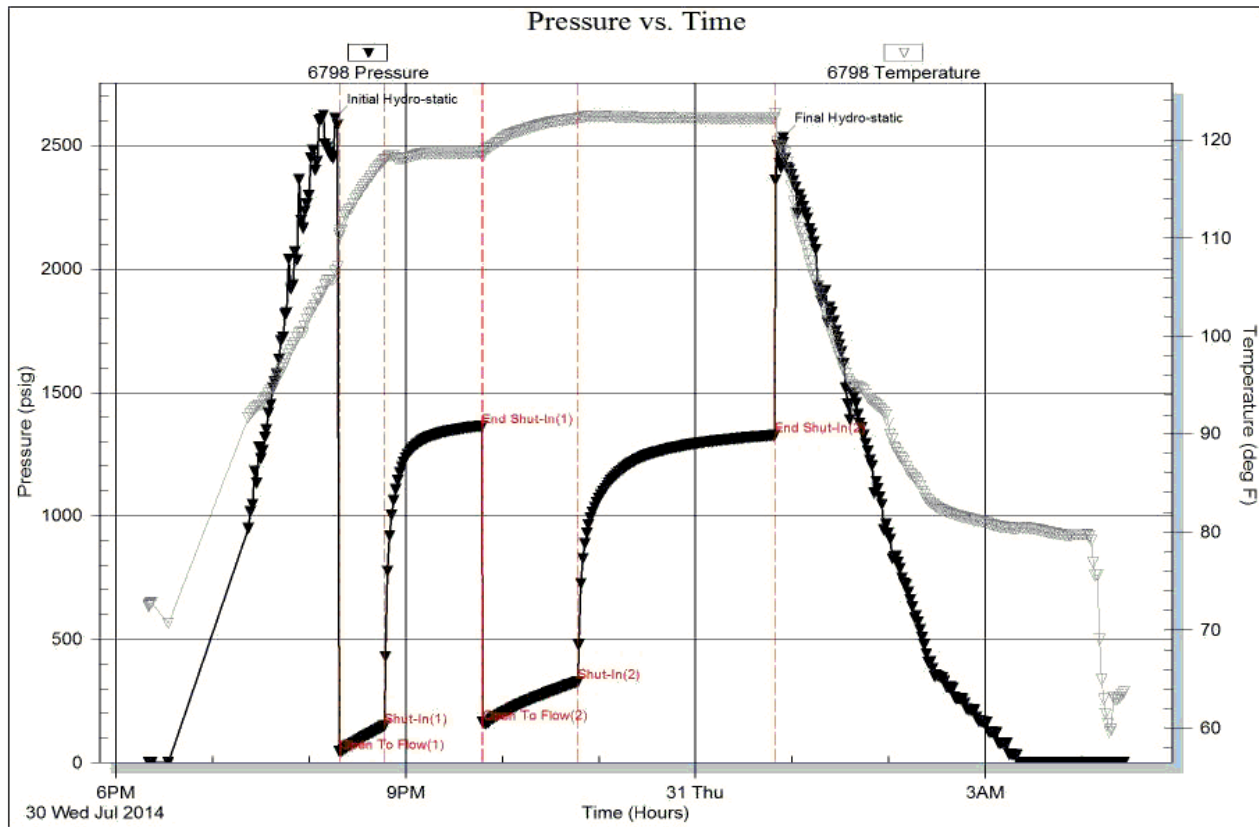


Triobite Testing, Inc

Ref. No: 51817

Printed: 2014.08.04 @ 13:54:56

Serial #: 6798 Inside Vincent Oil Corporation Zimmerman #2-8 DST Test Number: 4



Triobite Testing, Inc

Ref. No: 51818

Printed: 2014.08.04 @ 13:48:52

ROCK TYPES

ACCESSORIES

MINERAL

- ▲ Chert, dark
- △ Dolomitic
- + Feldspar
- Ferruginous, grains or pr
- Sandy
- △ Chert White

FOSSIL

- ⌈ Bryozoa
- Crinoids
- F Fossils < 20%
- φ Oolite
- Oolites

STRINGER

-
-
-

TEXTURE

- C Chalky
- CX Cryptocrystalline
- e Earthy
- FX Finexln
- MX Microxln

MISC

-

OTHER SYMBOLS

POROSITY TYPE

- x Intercrystalline
- φ Interoolitic
- V Vuggy
- P Pinpoint
- △ Moldic

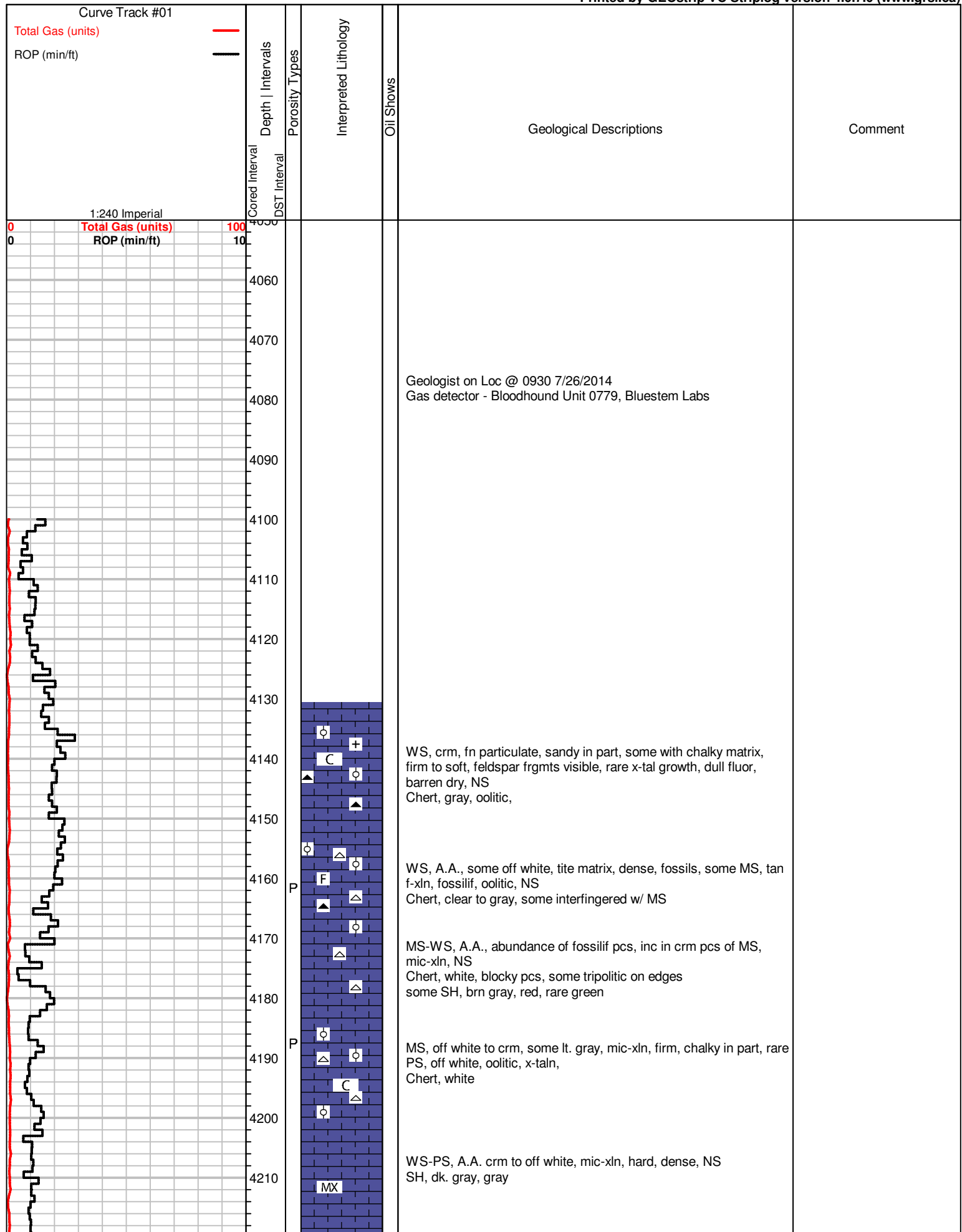
OIL SHOWS

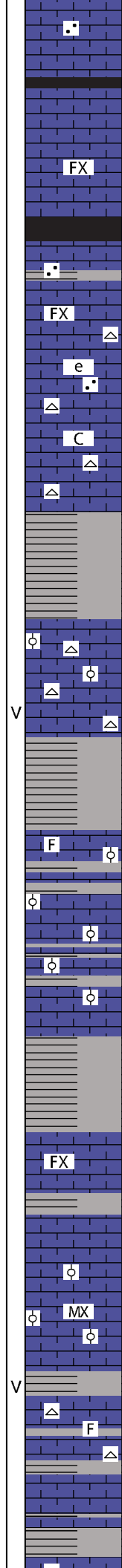
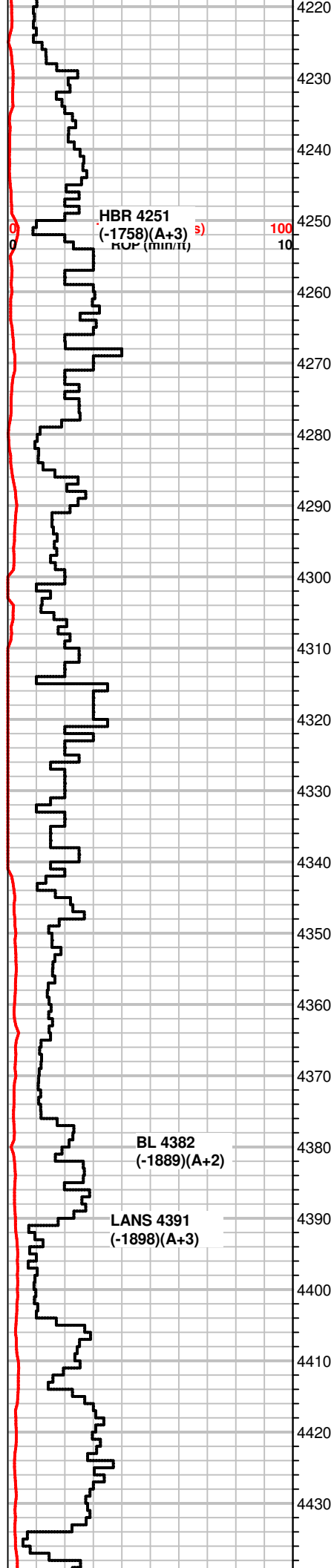
- Even Stn
- Spotted Stn 50 - 75 %
- Spotted Stn 25 - 50 %
- Spotted Stn 1 - 25 %
- Questionable Stn

INTERVALS

- Core
- DST

- O Organic
- F Fracture
- e Earthy
- Fenestral
- D Dead Oil Stn
- Fluorescence





MS, crm to tan, f-xln, some sandy, dense most pcs, NS

Sh, dk. gray, green, brn

FX MS, crm to tan, some gray, f-xln, firm to hard, earthy txt, dense, NS

SH, blk, dk. gray

MS-WS, crm to tan, f-xln, sandy, firm, black specs, rare mottled pcs, brn to tan, off white pcs earthy, hard, dull fluor, NS

FX

e MS, crm to off white, mic-xln to earthy txt, some pcs chalky, sandy pcs common throughout, hard to frim, no fluor, NS
Chert, tan and white

C MS, gray to crm, f-xln, dense, massive txt, rare PS, tan, chalky matrix w/ sandy txt in part, soft pcs., NS
Chert, bone white,

SH, gray, brn

SH, blk, gray, green

MS, crm, massive txt, dense, firm, WS-PS, off white, mic-xln, chalky, NS
Chert, bone white

V MS, crm to off white, mic-xln, dense, hard, NS rare vuggy por.
Chert, white, oolitic

SH, gray, green, rare blk

F MS-WS, crm to gray, tan, f to m-xln, fossilif, mottled pcs throughout, rare chalky matrix, most pcs dense, rare spotty stn in dry
SH, blk

WS-PS, gray to brn, f-xln, oolitic pcs common, m-gr, glauc particles, fossilif
SH, gray,

SH, blk, gray, some brn, crinoids

FX MS, brn, f-xln, tite martix, dense, NS

Sh, gray

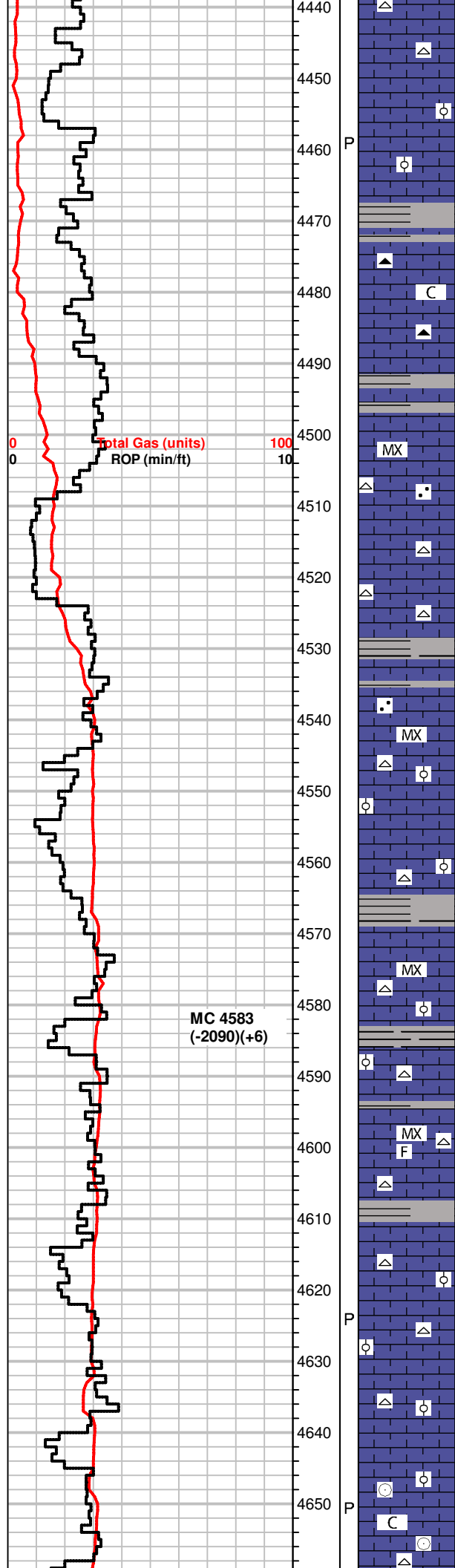
MS, crm to off white, mic to f-xln, dense, fossils, hard, rare PS, gray, oolitic, chalky matrix w/ blk ooids, rare very spotty stn in dry

V MX

MS-WS, crm to gray, f to med-xln, sandy txt, fossilif, Chert, white
SH, gray to green

F

MS-WS, A.A., tan matrix w/ gray ooids, girty txt, NS
Chert, bone white



MS, crm to tan, f-xln, dense, carrying SH from above

MS, crm f-xln to massive txt, dense, dull fluor, rare micro oolitic PS, crm, hard, NS, PP por. SH, gray, green,

MS, crm, f-xln, dense, firm to hard, mottled pcs scatt, some chalky in part, Chert, brn,

Some SH, blk to gray, silty

WS, crm to off white, mic-xln, massive txt, dense hard, rare sandy (calcitic sand), MS, brn to gray, some crm, dense, f-xln, dull fluor, lt. edge stn on rare pcs Chert, white, tan, micro oolitic

MS-WS, crm to gray, mic-xln, A.A., some co-gr particle inclusions, NS

some SH, gray

MS-WS, crm to brn, mic-xln matrix, vf-gritty txt in part, hard pcs, fossilif, lt. edge stn on rare pcs free Chert, white, smoky gray

MS, crm to gray, mic-xln, hard, some pcs w/ rare oolities, m-gr, Chert, white, tan

SH, gray

WS-MS, crm to tan, some gray, f to mic-xln, firm to hard, rare chalky matrix in pcs, rare mirco oolitic pcs, NS Chert, white

SH, blk, dk. gray, brn, striated

MS, crm, mic-xln, dense, tite matrix, gritty txt, rare fossils, dull fluor, lt. edge stn on rare pcs Chert, white some SH, gray

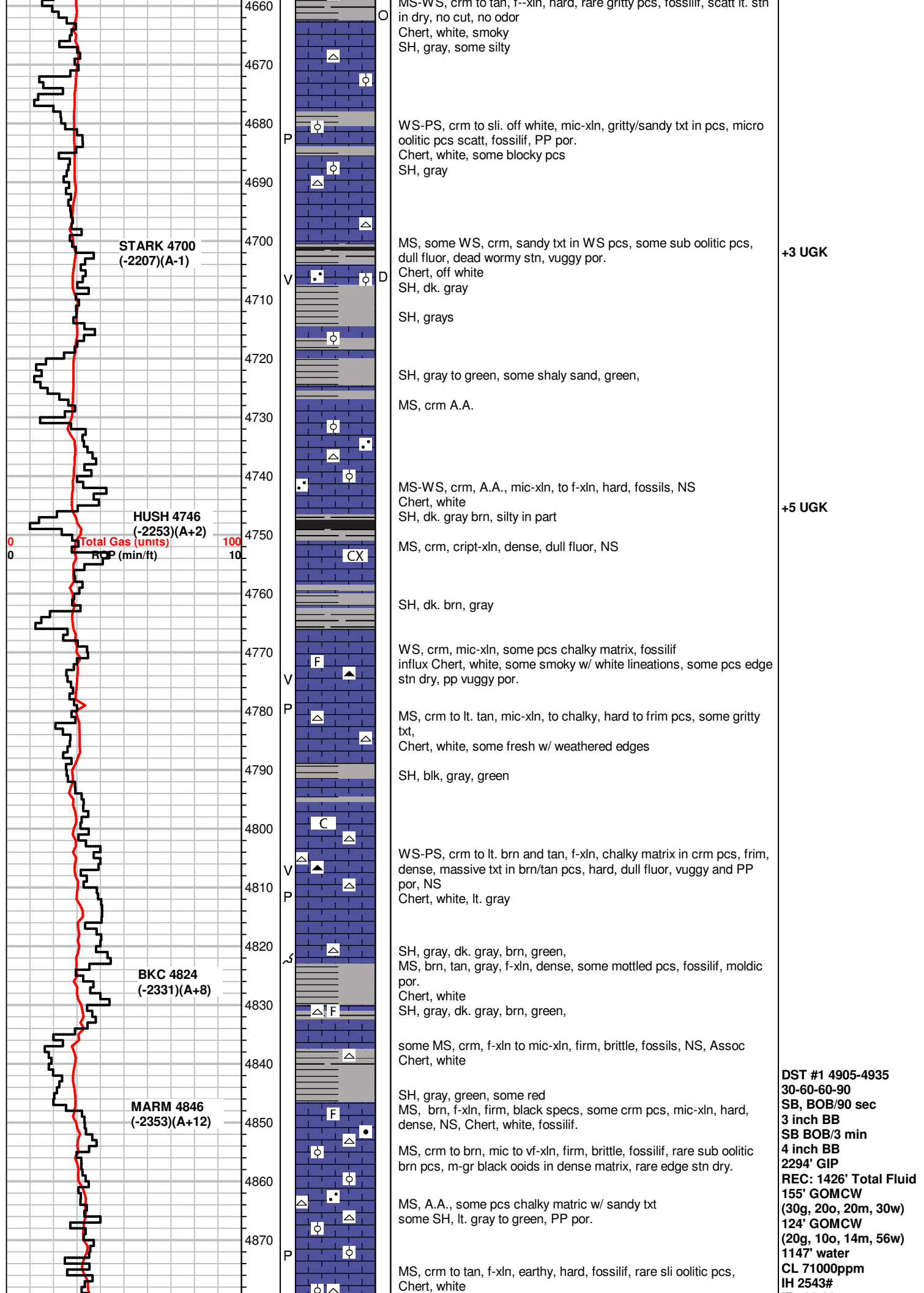
WS-PS, crm to off white, chalky matrix in part, mic to f-xln, hard, rare oolitic pcs, mottled, NS, rare PP por. Chert, white

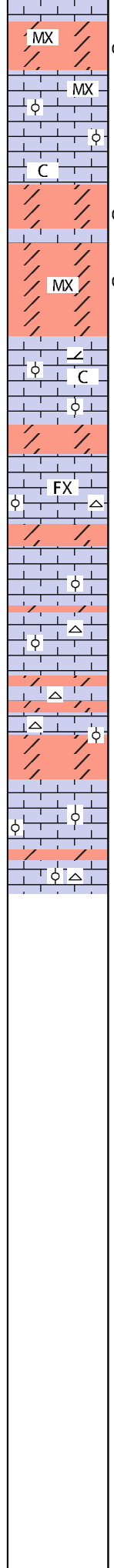
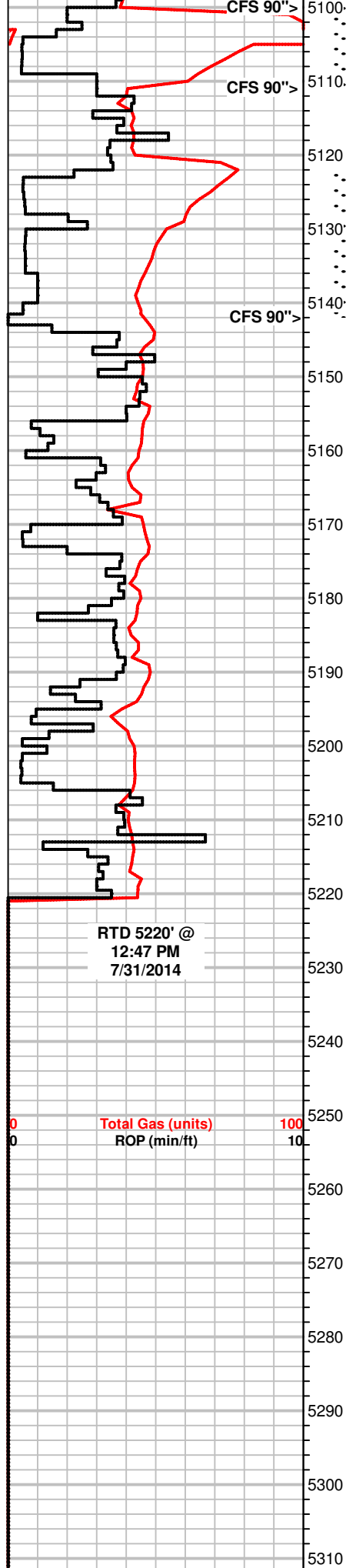
SH, blk, dk. gray, grays

MS, crm, mic-xln to chalky, crinoids, PP por. Chert, white

MS-WS, crm to tan, f-xln, hard, rare gritty pcs, fossilif, scatt lt. etc

MC 4583 (-2090)(+6)





WS, off white to crm, chalky to mic-xln, sub oolitic, firm to hard

WS, off white to crm, vf-sucrosic, soft to brittle, some pcs firm, stn on some pcs-30% of dolomite, very spotty bright fluor, bleeding gas, milky cut to residual ring cut,

WS, off white to crm some rare brn pcs, f-xln, hard, some pcs brittle, sli. chalky matrix in part, micro oolitic pcs, some dolomitic.

Dolo, brn to crm, f-suc, some pcs m-xln, bleeding gas, stain, streaming cut, PP and inter-xln por.

Dolo, brn, some crm, f-xln, f-sucrosic sugary txt, firm to friable, good odor in bag, stn, some saturation, rare free oil in tray, oil droplets in por spaces, inst. streaming cut **+37 UGK, 26 Unit recycle**

Dolo, brn, f-suc, firm, mineral fluor

WS-PS, off white to crm, f to m-xln matrix, pcs chalky, some oolitic, m-gr, NS

Dolo, brn to gray, f-suc, PS-WS, crm to off wht, f to m-xln, hard, oolitic in part, chalky matrix in pcs, NS
Chert, white oolitic, scatt tan

Dolo, gray, f-suc, some w/ white edges, sugary txt, dull fluor, NS

PS, off white to crm, chalky matrix, some pcs mic-xln, co-gr oolitic, NS, Dolo, A.A. NS
Chert, white

PS, crm to off white, chalky matrix in pcs, mic-xln, oolitic, co-gr ooids, NS, Scatt dolo, gray to brn, f-suc.
Chert, white,

Dolo, gray to brn, f-suc, sugary txt, firm, dull mineral fluor, NS

WS-PS, off white to crm, mic-xln, oolitic pcs throughtout, hard, NS
Dolo, brn to lt. grayh, f-suc, firm, NS
WS, off white, crm, mic to f-xln, hard, oolitic, fossilif Chert, white

**102 units total gas
+36 UGK
recycle +8 UGK**

**DST #2 5099-5111
30-60-60-120
SB BOB/10 sec,
GTS/6 min
GA on 1/4" choke
181 MCF/10min
300 MCF/20min
340 MCF/30min
Never bled off
SB BOB+GTS/immed
GA on 1/2" choke
488 MCF/10min
542 MCF/20min
555 MCF/30min
542 MCF/40min
542 MCF/50min
542 MCF/60min
NBB
5071' GIP
REC:
30 GCM (5g, 95m)
IH 2606#
IF 129-291#
ISIP 1545#
FF 158-170#
FSIP 1500#
FH 2547#
Temp 115°F**

**DST #4 5122-5142
30-60-60-120
SB BOB/30sec
GTS/8min into bleed off
BB built to BOB/8min
SB, BOB+GTS/immed
BB BOB/10min
4523' GIP
REC:
144' GOMCW
(12g, 5o, 59w, 24m)
62' GMCW
(2g, 88w, 10w)
372' W
IH 2609#
IF 45-156#
ISIP 1362#
FF 163-328#
FSIP 1324#
FH 2532#
Temp 119°F
Rw .15 @ 60°F
CL 59,000 ppm**

5320

5330

5340

5350

5360

5370

5380

5390

5400

5410

5420

5430

5440

5450

5460

5470

5480

5490