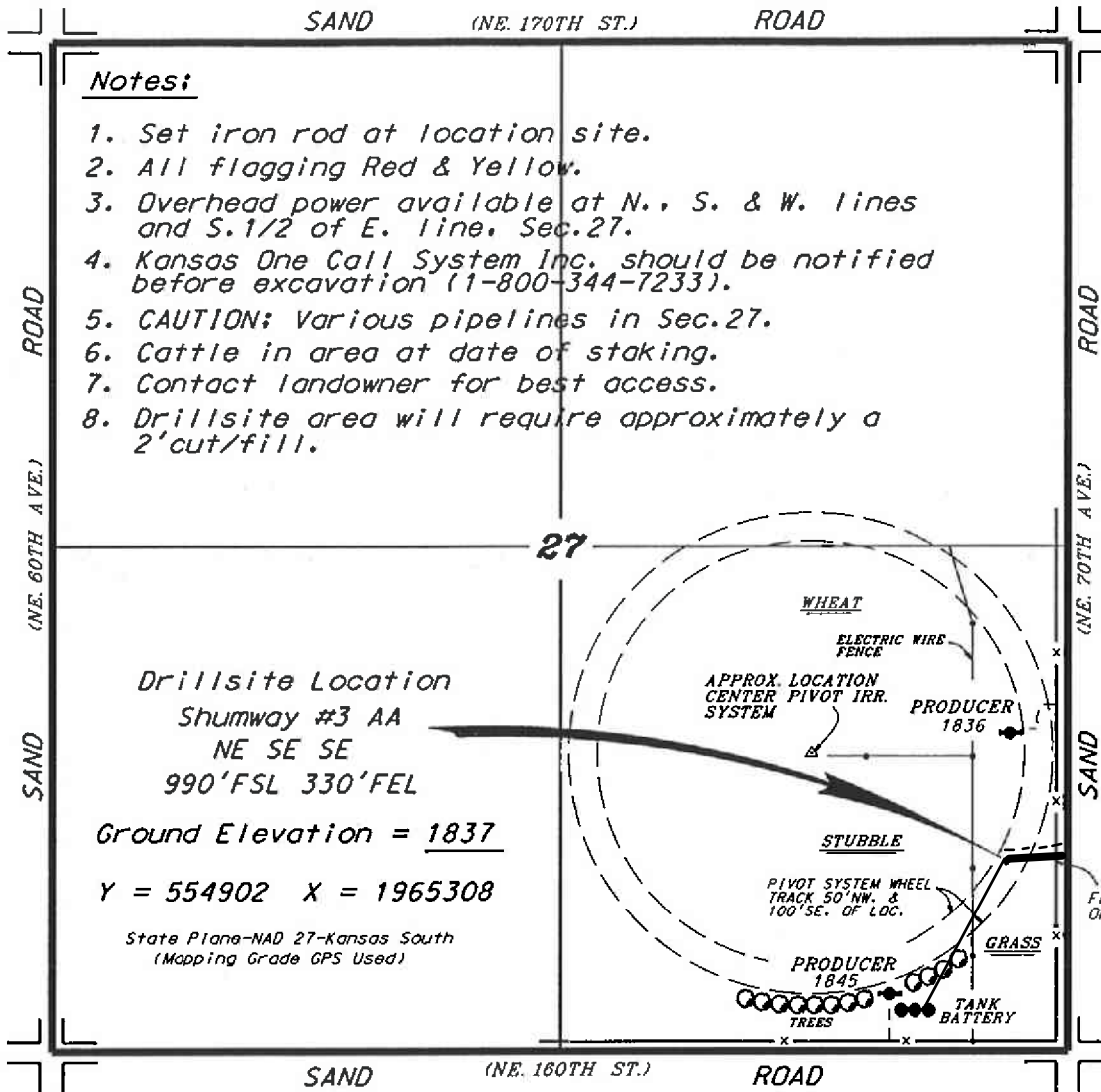


L.D. DRILLING, INC.
SHUMWAY LEASE
SE. 1/4, SECTION 27, T21S, R12W
STAFFORD COUNTY, KANSAS

Directions:

From the intersection of Highway 281 and Highway K-19, go 2.0 miles North on Highway 281, then go 7.0 miles East on a county road to the SE. corner of Section 27, then go 0.18 miles North to a flagged fence on the west side of road, then go 0.05 miles West to location.

* Ingress and egress to location as shown on this plot is per usage only and may not be legally opened for public use. Contact landowner, tenant and county road department for access.



* Controlling data is based upon the best maps and photographs available to us and upon a regular section of land containing 640 acres.
 * Approximate section lines were determined using the normal standard of care of oilfield surveyors practicing in the state of Kansas. The section corners, which establish the precise section lines, were not necessarily located, and the exact location of the drillsite location in the section is not guaranteed. Therefore, the operator securing this service and accepting this plot and all other parties relying thereon agree to hold Central Kansas Oilfield Services, Inc., its officers and employees harmless from all losses, costs and expenses and said parties released from any liability from incidental or consequential damages.
 * Elevations derived from National Geodetic Vertical Datum.

Date May 1, 2014