



**Natural Gas • Crude Oil
Exploration & Production**

**McCOY PETROLEUM CORPORATION
Wichita, Kansas**

Scale 1:240 (5"=100') Imperial
Measured Depth Log

Well Name: HWY 'A' #1-25
API: 15-097-21810-00-00
Location: Sec. 25 - T30S - R19W, Kiowa County, KS
License Number: 5003
Spud Date: Oct 21, 2014
Surface Coordinates: W2 NE SE
1980' FSL & 990' FEL
Bottom Hole Coordinates:
Ground Elevation (ft): 2232'
Logged Interval (ft): NA To: NA
Formation: Mississippian
Type of Drilling Fluid: Chemical/Polymer/Gel

Region: Alford South
Drilling Completed: Oct 28, 2014
K.B. Elevation (ft): 2241'
Total Depth (ft): RTD: 5121'

Printed by MUD.LOG from WellSight Systems 1-800-447-1534 www.WellSight.com

OPERATOR

Company: McCoy Petroleum Corporation, KCC License #5003
Address: 9342 E Central
Wichita, KS 67206

GEOLOGIST

Name: Zach Wiele
Company: McCoy Petroleum Corporation
Address: 9342 E. Central
Wichita, KS 67206

Casing & Deviation Surveys:

Spud @ 6:00 pm Wednesday 10/21/14

13-3/8" Casing String:

Drilled 17- 1/2 " hole to 255'. Ran 7 joints of 48# ; 13-3/8" surface casing.
Tallied 240.32'+.80' Shoe, set at 252' KB. Strapped bottom 3 joints. Tacked collars & pins on 4 joints.
Cemented with 350 sks 60/40 POZ; 2% Gel; 3% CC; 1/4# CF. Cement did circulate. Plug down
at 3:30 am on 10/22/14. Basic Energy Svcs Cementing ticket #11494.

8-5/8" Casing String:

Drilled 12-1/4" hole to 646'. Ran 15 joints of new 23# 8-5/8" surface casing. Tallied 630.73'. Landed at
at 642.73'. Strapped guide shoe and bottom 3 joints, tacked collars on all, then welded collar on top 3 joints.
Basket at 220'. Cemented with 200 sks A-Con; 3% CC, 1/4# CF & tailed with 200 sks 60/40 POZ; 2%
3% CC & 1/4# CF. Cement did circulate. Baffle in 1st collar. Plug down at 12:30 am on 10/23/14.
Basic Energies cementing ticket #11495.

Drilled cement (61') plug and 118' with tooth bit. PDC bit in at 764'

Deviation Surveys Taken: @ 255' = 1 Degree; @ 346' = 1- 3/4 Degrees

DRILL STEM TEST

DST #1

4906-4957' (Marmaton)

Open: 5", SI: 60", Open: 90", SI: 120"

1st Open: Strong Blow off bottom of bucket in 1.5 minutes. Weak 1/4" blowback.

2nd Open: Fair to Strong Blow off bottom of bucket in 5 minutes. Weak 1.5" blowback.

Rec: 1142' GIP

60' GMOCW (1%Gas, 3%Mud, 4%Oil, 92%Water)

342' SOGMCW (2%Gas, 5%Mud, 93%Water)

128' OWGCM (13%Oil, 20%Water, 27%Gas, 40%Mud)

106' GOWCM (5%Gas, 20%Oil, 25%Water, 50%Mud)

636' Total Fluid Recovery

IFP: 99-119# FFP: 142-312#

SIP: 1499-1478#

DST #2

5090-5121' (Mississippian: Spergen)

Open: 5", SI: 45", Open: 90", SI: 60"

1st Open: Good Blow off bottom of bucket in 1 minute.

2nd Open: Strong Blow of bottom of bucket immediately. GTS in 68 mins. TSTM.

Test tool got Stuck In Hole. Tool slide to bottom and fluid recovery is
approximated. Pressure Recorders are being fished.

Rec: 3980' O&GCM (Appx 8-10%Oil, 13%Gas, 77-79%Mud)

3980' Total fluid recovery

IFP: NA ATT

SIP: NA ATT

ROCK TYPES



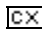

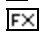
LITHOLOGY



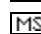

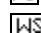
-  Char-grn sh
-  Anhy
-  Brec
-  Cht
-  Clyst
-  Dol
-  Gyp

-  Lmst
-  Drk gry sh
-  Ss
-  Congl
-  Blk carb sh
-  Grn sh
-  Brn sh
-  Red sh






-  Gry sh

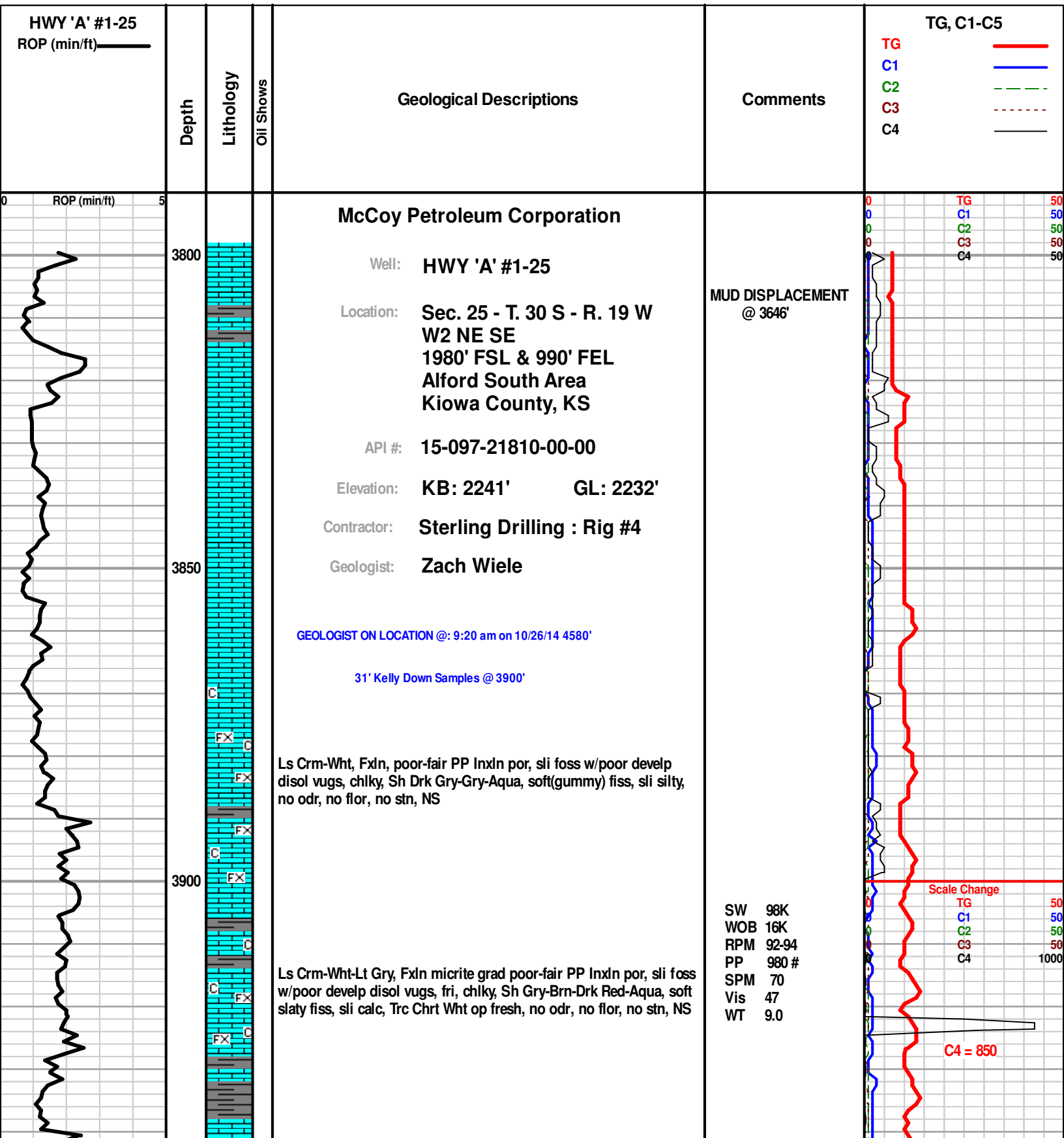
TEXTURE

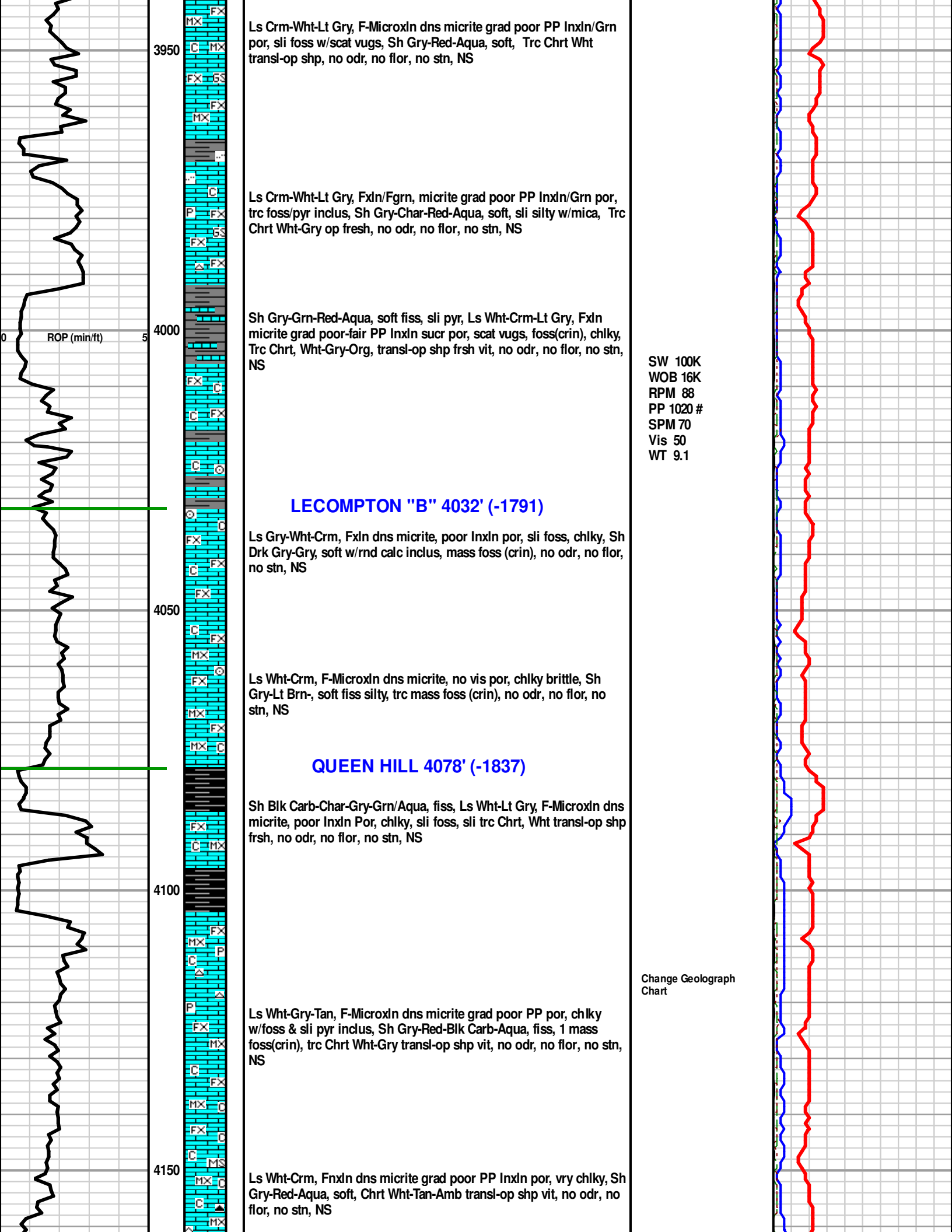
-  Boundst
-  Chalky
-  Cryxln
-  Earthy
-  Finexln

-  Grainst
-  Lithogr
-  Microxln
-  Mudst
-  Packst
-  Wackest

OIL SHOW

-  Even
-  Spotted
-  Ques
-  Gas
-  Dead





Ls Crm-Wht-Lt Gry, F-Microxn dns micrite grad poor PP Inxn/Grn por, sli foss w/scat vugs, Sh Gry-Red-Aqua, soft, Trc Chrt Wht transl-op shp, no odr, no flor, no stn, NS

Ls Crm-Wht-Lt Gry, Fxn/Fgrn, micrite grad poor PP Inxn/Grn por, trc foss/pyr inclus, Sh Gry-Char-Red-Aqua, soft, sli silty w/mica, Trc Chrt Wht-Gry op fresh, no odr, no flor, no stn, NS

Sh Gry-Grn-Red-Aqua, soft fiss, sli pyr, Ls Wht-Crm-Lt Gry, Fxn micrite grad poor-fair PP Inxn suc por, scat vugs, foss(crin), chlky, Trc Chrt, Wht-Gry-Org, transl-op shp frsh vit, no odr, no flor, no stn, NS

LECOMPTON "B" 4032' (-1791)

Ls Gry-Wht-Crm, Fxn dns micrite, poor Inxn por, sli foss, chlky, Sh Drk Gry-Gry, soft w/rnd calc inclus, mass foss (crin), no odr, no flor, no stn, NS

Ls Wht-Crm, F-Microxn dns micrite, no vis por, chlky brittle, Sh Gry-Lt Brn-, soft fiss silty, trc mass foss (crin), no odr, no flor, no stn, NS

QUEEN HILL 4078' (-1837)

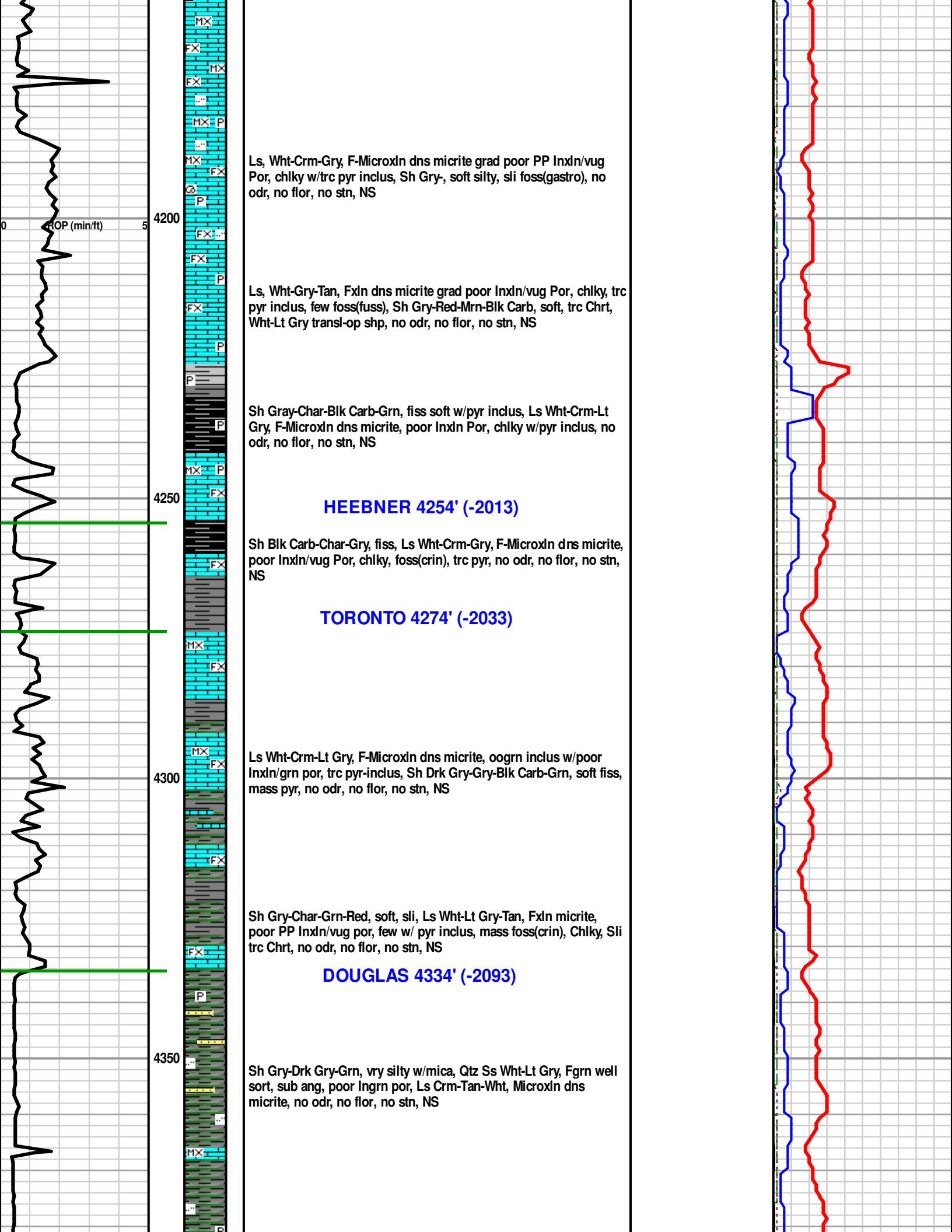
Sh Blk Carb-Char-Gry-Grn/Aqua, fiss, Ls Wht-Lt Gry, F-Microxn dns micrite, poor Inxn Por, chlky, sli foss, sli trc Chrt, Wht transl-op shp frsh, no odr, no flor, no stn, NS

Ls Wht-Gry-Tan, F-Microxn dns micrite grad poor PP por, chlky w/foss & sli pyr inclus, Sh Gry-Red-Blk Carb-Aqua, fiss, 1 mass foss(crin), trc Chrt Wht-Gry transl-op shp vit, no odr, no flor, no stn, NS

Ls Wht-Crm, Fxn dns micrite grad poor PP Inxn por, vry chlky, Sh Gry-Red-Aqua, soft, Chrt Wht-Tan-Amb transl-op shp vit, no odr, no flor, no stn, NS

SW 100K
WOB 16K
RPM 88
PP 1020 #
SPM 70
Vis 50
WT 9.1

Change Geolograph Chart



Ls, Wht-Crm-Gry, F-MicroIn dns micrite grad poor PP Inxn/vug Por, chlky w/trc pyr inclus, Sh Gry-, soft silty, sli foss(gastro), no odr, no flor, no stn, NS

Ls, Wht-Gry-Tan, FxIn dns micrite grad poor Inxn/vug Por, chlky, trc pyr inclus, few foss(fuss), Sh Gry-Red-Mrn-Blk Carb, soft, trc Chrt, Wht-Lt Gry transl-op shp, no odr, no flor, no stn, NS

Sh Gray-Char-Blk Carb-Grn, fiss soft w/pyr inclus, Ls Wht-Crm-Lt Gry, F-MicroIn dns micrite, poor Inxn Por, chlky w/pyr inclus, no odr, no flor, no stn, NS

HEEBNER 4254' (-2013)

Sh Blk Carb-Char-Gry, fiss, Ls Wht-Crm-Gry, F-MicroIn dns micrite, poor Inxn/vug Por, chlky, foss(crin), trc pyr, no odr, no flor, no stn, NS

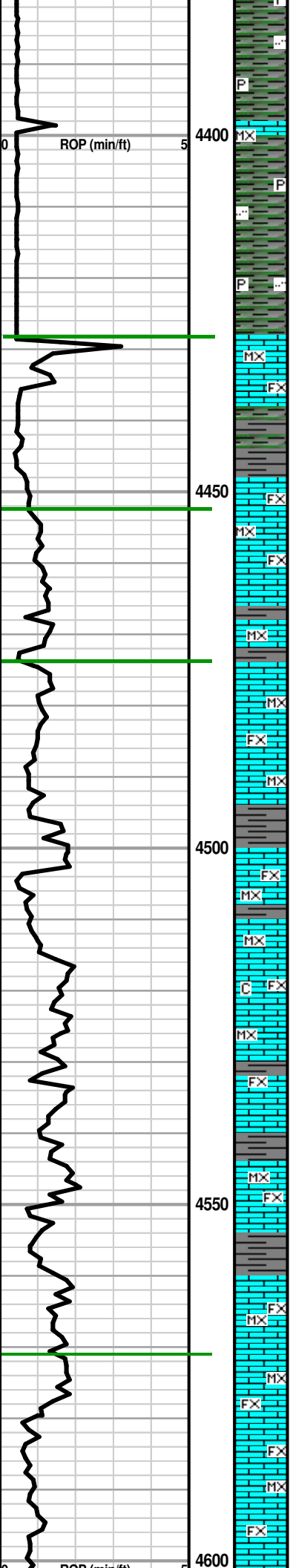
TORONTO 4274' (-2033)

Ls Wht-Crm-Lt Gry, F-MicroIn dns micrite, oogrn inclus w/poor Inxn/grn por, trc pyr-inclus, Sh Drk Gry-Gry-Blk Carb-Grn, soft fiss, mass pyr, no odr, no flor, no stn, NS

Sh Gry-Char-Grn-Red, soft, sli, Ls Wht-Lt Gry-Tan, FxIn micrite, poor PP Inxn/vug por, few w/ pyr inclus, mass foss(crin), Chlky, Sli trc Chrt, no odr, no flor, no stn, NS

DOUGLAS 4334' (-2093)

Sh Gry-Drk Gry-Grn, vry silty w/mica, Qtz Ss Wht-Lt Gry, Fgrn well sort, sub ang, poor Ingrn por, Ls Crm-Tan-Wht, MicroIn dns micrite, no odr, no flor, no stn, NS



Sh Gry-Drk Gry-Char-Red-Grn, vry silty w/mica and pyr inclus Ls Crm-Tan-Wht, Microxn dns micrite, no odr, no flor, no strn, NS

Sh Gry-Lt Gry-Lt Brn, soft silty in pt w/strks pyr, Trc Ls Tan-Gry-Crm, F-Microxn micrite, sli oolithic w/foss inclus, poor PP Inxln Por, mass foss(gastro), no odr, no flor, no strn, NS

BROWN LIME 4428' (-2187)

LANSING 4452' (-2211)

LANSING "B" 4474' (-2233)

Ls Wht-Gry-Tan, Fxln micrite, oolithic w/foss inclus (sml-med ool grns in plc), vpoor Inxln por, Sh Gry-Lt Brn-Mrn-Red-Aqua soft fiss, silty in prt, mass pyr, no odr, no flor, no strn, NS

Sh Gry-Chr-Grn, soft silty, mass pyr, Ls Wht-Crm-Gry, F-Microxn dns micrite, poor PP Inxln por, chlky, Chrt Wht-Tan-Gry trans-op shp vit, no odr, no flor, no strn, NS

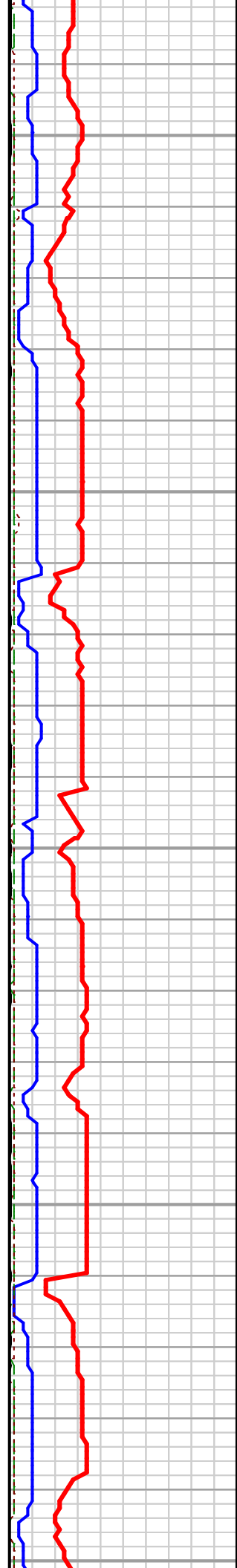
Ls Wht-Tan-Lt Gry, F-Microxn dns micrite, poor PP Inxln/Gran Por w/scat vugs, chlky, Sh Gry-Brn-Red, soft silty, trc Chrt Tan op shp, mass pyr, foss, no odr, no flor, no strn, NS

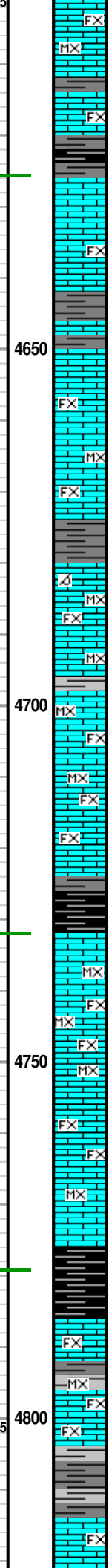
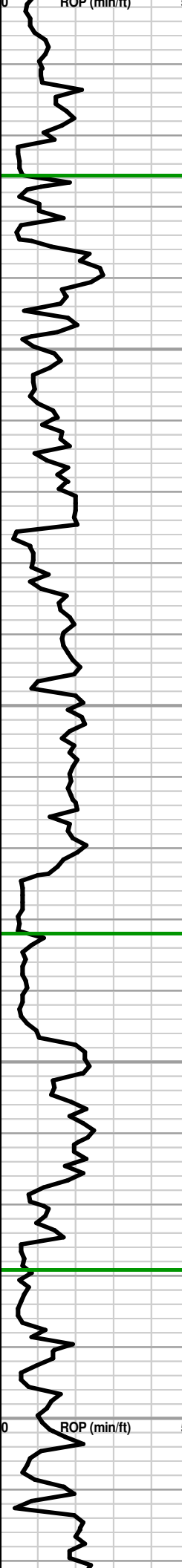
LANSING "F" 4571' (-2330)

Ls Wht-Crm-Lt Gry, F-Microxn dns micrite, poor PP Inxln/Gran Por, trc ool grn in plc, chlky w/foss inclus, Sh Gry-Red-Drk Gry, soft, sli silty, trc Chrt Tan-Gry op shp vit, mass pyr, no odr, no flor, no strn, NS

SW 106K
WOB 16K
RPM 90
PP 975 #
SPM 70
Vis 47
WT 9.3

Mudco Ck @
4525' @ 8:30 AM
10/26/14 Vis=42;
WT=9.4#;
PV=14;
YP= 15;
WL=13.4;
Cake=2;
Chl=7,000;
Cal =440 ;
Sol=7.4%. LCM=
TRC#;
DMC=\$ 1,267.35
CMC=\$ 9,943.95





Ls, Wht-Crm-Tan, F-Microxn micrite grad poor PP Inxn Por, chl ky, Chrt Gry-Wht -Tan transl-op shp vit w/foss inclus(crin), Sh Gry-Drk Gry, soft fiss, Mass Pyr, no odr, no flor, no stn, NS

KANSAS CITY "H" 4625' (-2384)

Ls Wht-Crm-Lt Gry, Fxn micrite grad poor Inxn Por, sli trc vpor oom por, vry chlky, sli foss, Sh Gry-Lt Brn-Red, soft fiss silty, no odr, no flor, no stn, NS

Ls Tan-Crm-Wht, VF-Microxn dns micrite grad poor-fair PP Inxn/oom Por, sli sucro, poor-fair delevp disol vugs, chlky, Sh Gry-Char-Grn, soft, Chrt Tan-Wht-Gry transl-op shp vit, no odr, sli flor, no stn, NS

Ls Wht-Crm-Lt Gry, F-Microxn, mostly dns micrite, few w/ poor-fair PP Inxn/oom Por, poor delevp disol vugs, chlky w/trc pyr inclus,, Sh Gry-Red-Grn, soft, Chrt Tan-Wht-Gry transl-op shp vit, no odr, sli flor, no stn, NS

KANSAS CITY "J" 4732' (-2491)

Ls Wht-Crm-Tan-Lt Gry, F-Microxn dns micrite, grad poor PP Inxn por, Scat poor oom por(1 pc w/good Inxn/oom por w/ good delevp disol vugs), chlky, Sh Char-Gry-Blk Carb-Red, fiss silty trc pyr, Chrt Gry-Wht trnsl-op shp, no odr, no flor, no stn, NS

Ls Wht-Crm-Tan, Fxn dns micrite grad poor PP Inxn por grad fair-good Inxn/oom por w/fair- good delevp disol vugs, chlky, Sh Blk Carb(w/SGB)-Gry-Red-Grn, fiss silty pyr inclus, Chrt Gry trnsl-op shp, no odr, no flor, no stn, NS

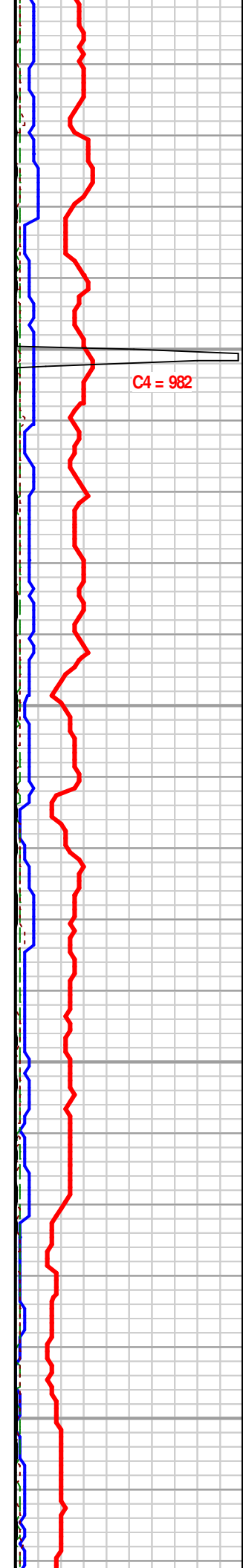
STARK 4779' (-2538)

Sh Blk Carb(w/SGB)-Gry-Brn-Grn, fiss w/strks pyr, Ls Wht-Crm-Gry, F-Microxn, dns micrite grad poor PP por, sli trc poor-fair PP Inxn/oom por w/ scat pyr & foss inclus, chlky, no odr, no flor, no stn, NS

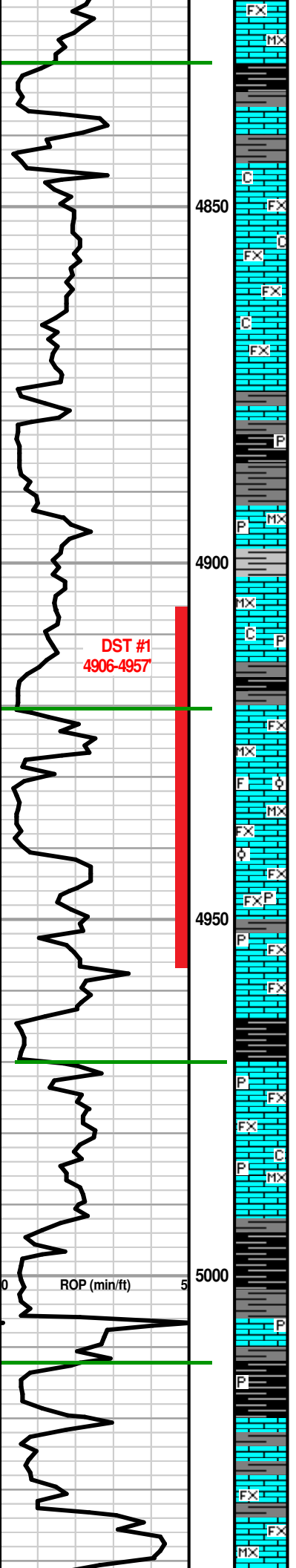
Ls Wht-Crm-Tan-Lt Gry, F-Microxn dns micrite grad poor PP Inxn por, sli trc fair PP Inxn sucro por w/poor-fair delevp disol vugs, chlky w/pyr inclus, Sh Gry-Brn-Grn, soft, mass pyr, trc Chrt Wht- Gry op shp f rsh vit, no odr, no flor, no stn, NS

Sh Gry-Brn-Grn, soft w/pyr inclus, Ls Wht-Crm-Gry, Micro-Fxn dns micrite, poor PP Inxn por, w/pyr inclus, Chrt Wht-Gry-Tan op shp vit, no odr, no flor, no stn, NS

Ls Wht-Tan Gry, Fxn dns micrite, 1 pc w/fair oom por, trc pyr inclus, Sh Gry-Drk Gry-Brn-Blk Carb, soft gummy w pyr strks, no odr, no flor, no stn, NS



SW 110K
WOB 16K
RPM 90
PP 1000#
SPM 70
Vis 49
WT 9.5
LCM 1#



Ls Wht-Gry-Lt Tan, Fxln micrite grad poor PP Inxln Por, few scat pc w/fair-good PP Inxln/Oom Por, foss w/Infoss por, good develop rnd-elong disol vugs(smal-med), chlky, Sh Gry-Brn-Blk Carb, soft fiss, no odr, no stn, no fluor, NS

HUSHPUCKNEY 4830' (-2589)

Sh Blk Carb(w/SGB)-Gry-Aqua, soft fiss silty, Ls Gry-Crm-Wht, Fxln micrite grad poor PP Inxln Por w/poor-fair disol vugs, chlky, scat pyr, no odr, no flor, no stn, NS

Ls Wht-Crm-Gry, Fxln micrite grad poor PP Inxln Por, vry chlky, foss, Sh Gry-Drk Gry-Brn, fiss, mass pyr, no odr, no flor, no stn, NS

Ls Wht-Gry-Tan, Fxln micrite, sli trc fair PP Inxln/Oom por w/disol vugs, chlky, Sh Gry-Brn-Drk Gry, soft w/pyr inclus, no odr, no fluor, no st n, NS

Ls Wht-Gry, Fxln micrite grad poor Inxln por w/scat disolu/leach vugs, foss(crin,fuss) w/Infoss por(3 pc), Sh Gry-Drk Gry-Brn, mass pyr, no odr, no fluor, no stn, NS

Ls Lt Tan-Crm-Wht-Gry, Fxln micrite, poor PP Inxln por, scat vugs, sli chlky, Sh Gry-Aqua-Red, soft, pyr-inclus, no odr, no flor, no stn, NS

Ls Crm-Tan-Wht-Gry, Fxln micrite, poor-fair PP Inxln por, chlky, Sh Gry-Drk Gry-Aqua, soft fiss, no odr, no flor, no stn, NS

Sh Gry-Brn-Lt Grn-Red, soft fiss, sli silty, Ls Wht-Crm-Brn-Gry, Fxln micrite grad poor PP Inxln por, chlky, foss(crin), mass pyr, no odr, no flor, no stn, NS

Ls Wht-Crm-Gry, Fxln micrite grad poor-fair PP Inxln por, chlky, Sh Blk Carb-Gry-Lt Brn, soft fiss, no odr, no flor, no stn, NS

Ls Wht-Crm-Gry, Fxln dns micrite, (3 pc w/fair-good Inxln oom por), chlky w/scat pyr inclus, Sh Gry-Lt Brn-Red-Aqua-Blk Carb, soft fiss, mass pyr, no odr, no flor, no stn, NS

MARMATON 4920' (-2679)

30' CFS @ 4956' Ls Wht-Crm-Lt Tan, Fxln, fair-good Inxln oom/oc por, fair-good develop disolu vugs, med odr, sply-even bright Grn/Yellw flor(3-5% in tray), Good SGB in wtr undr heat lamp (GB do flor), few spts vry lt brn FO(aft 10% HCL), med-fast bright streaming cut, scat vry lt brn stn, GSG, Sli SFO

60' CFS @ 4956' Ls Wht-Crm-Lt Tan, Fxln, fair PP Inxln/foss por, fair-good oom/oc Inxln por, fair develop disolu vugs, med odr, sply-even bright Grn/Yellw flor(5% in tray), Good SGB undr heat lamp (GB do flor), vry lt scat stn, no vis FO, med-fast bright streaming cut, GSG, NSFO

Sh Blk Carb(w/SGB)-Gry-Grn-Red-Aqua, soft gummy fiss w/strks pyr, sli calc, Ls Crm-Tan, F-microxln dns micrite, Chrt Wht-Tan trnsp-transl-op frsh, trc foss(crin), no odr, no fluor, no stn, NS

PAWNEE 4970' (-2729)

Ls Tan-Crm-Wht, F-Microxln dns micrite, trc poor PP Inxln por, chlky, Sh Gry-Drk Gry-Blk Carb-Grn, fiss laminated in prt, scat pyr inclus, sli foss(bivalv), no odr, no fluor, no stn, NS

Ls Wht-Crm, Microxln dns micrite, sli foss(crin), few pc w/poor-fair Inxln/foss vug por, chlky, Sh Gry-Chr-Aqua-Red, soft fiss w pyr inclus, Chrt Wht-Lt Gry-Crm transl-op shp vit, no odr, no fluor, no stn, NS

Ls Wht-Crm, VF-Microxln dns micrite, foss w/poor-fair PP Inxln/foss vug por, fair odr, bri yel flour(3% in tray), patchy drk gils tn, trc lt brn stn, GSG w/10% HCL(GB do flour), no vis FO, chlky, Sh Blk Carb(w/SGB)-Gry-Aqua-Red, soft fiss, strks pyr

Sh Blk Carb(w/SGB)-Gry-Grn, fiss soft, silty in prt w/pyr inclus, Ls Wht-Crm-Gry, F-Microxln micrite grad poor PP Inxln por, sli foss, (few pc AA w/ faint odr, sply flour, sply brn stn, NS)

CHEROKEE 5012' (-2771)

Sh Blk Carb-Char-Gry-Grn, fiss w/pyr inclus, Ls Wht-Crm-Tan, F-Microxln micrite grad poor Inxln por, foss w/fair PP Inxln/foss vug por, faint odr, trc sply lt brn stn, patch flour(2-3% in tray), Fair Show flour GB, bright streaming cut, no vis FO

Ls Wht-Crm-Gry, F-Microxln dns micrite, foss w/poor-fair PP Inxln por, fair odr undr heat lamp, strks blk gil stn, few pc w/lt brn stn, sply-even flour(2-3% in tray), fair show GB, 2 vry smt lt brn FO spts, Sh Blk Carb-Gry, fiss, Chrt Wht-Gry transl-op shp vit, scat pyr

Ls Wht-Crm-Gry-Tan, F-Microxln dns micrite grad poor PP Inxln Por, foss, chlky Sh Blk Carb Gry Crn Red, soft fiss gummy no odr, scat strks blk gil stn, sli

Filter Change 4860'
Lag Depth

**DST #1
4906-4957'
5-60-90-120'**

IF: BOB 1 1/2 min
IS: Wk Blw, Bleed of in 5 mins, 2 mins surf 1/4 in
FF: Fair-Strong Blw, BOB 5/mins
FSI: Wk Blw, Bleed off 3 mins, 3 mins surf 2 1/2 in, 67 mins died back to 1 1/2 in

Rec. 60' GmOCW (1g,3m,4o,92w)
342' Slt OGMCW (2g,5m,93w)
128' OWGCM (13o,20w,27g,40m)
106' GOWCM (5g,20o,25w,50m)
1142' GP(100%)g

Pressure:
IH: 2539
IF: 99-11.9
ISIP: 1499
FF: 141-312
FSIP: 1478
FH: 2486

CFS 30-60" @ 4957'

35 Stand Short Trip @ 4956'. Strap = 3.19 short, Dev = 1/2 Degree

Mud-Co Ck @ 4957' @ 9:30 AM 10/27/14
Vis=70
WT=9.9#
PV=20
YP=20
WL=14.4
Cake=3
Chl=10,000
Cal=520
Sol=10.7%
LCM= 3#
DMC=\$ 1,998.40
CMC=\$11,942.35

Mud-Co Ck @ 4971' @ 10:00 PM 10/27/14
Vis=43
WT=9.2#
PV=12
YP=13
WL=9.6
Cake=1
Chl=8,000
Cal=40
Sol=5.9%
LCM= 1#
DMC=\$ 1,091.80
CMC=\$13,034.15

Scale Change

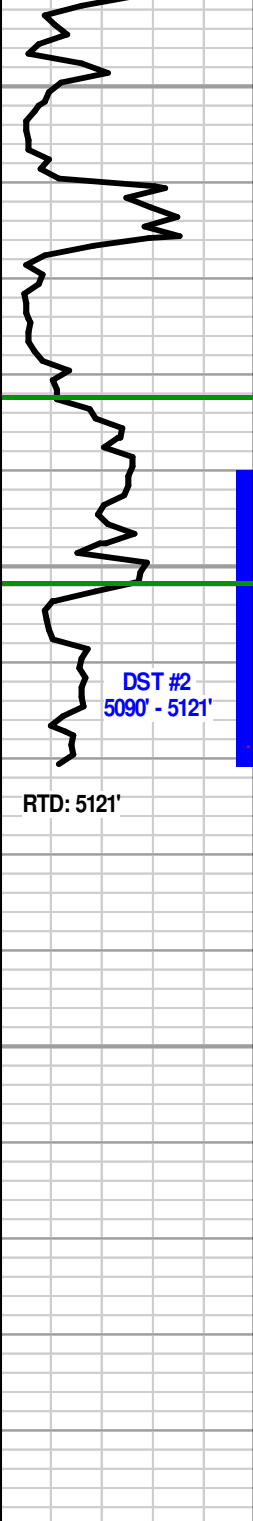
TG	200
C1	200
C2	50
C3	50
C4	1100

148 UGK

C1 = 56
C2 = 0
C3 = 9
C4 = 1074

Scale Change

TG	100
C1	100
C2	50
C3	50
C4	50



Sh Blk Carb-Gry-Brn-Grn-Red, soft fiss, Ls Wht-Crm-Gry, F-Microxln micrite, poor lnxln por, s cat pyr, no odr, no fluor, no stn, NS

Sh Blk Carb-Gry-Aqua-Red, soft fiss w/pyr inclus, Ls Wht-Crm-Tan, F-Microxln micrite, poor lnxln por, foss, ma ss pyr, chlky, Chrt Wht-Gry op sh pfrsh, no odr, no fluor, no stn, NS

Sh Blk Carb-Gry-Grn-Aqua-Red, soft fiss gummy, w/pyr inclus, Ls Wht-Crm-Tan, Fnxln micrite, poor lnxln/vug por, foss, chlky, scat blk gil stn, Chrt Wht-Tan-Gry op shp frsh, no odr, no fluor, no stn, NS

Sh Blk Carb-Gry-Aqua-Brn-Mrn, soft fiss Ls Wht-Crm, F-Microxln micrite, poor-fair PP lnxln por, foss, chlky CaCO3 mud, scat blk gil stn, Chrt Wht-Org-Tan transl-op shp frsh vit, no odr, no fluor, no stn, NS

MISSISSIPPIAN 5082' (-2841)

Ls Wht-Crm, Micro-Fxln micrite grad poor-fair PP lnxln sucro por, w/trc gluc inclus, faint odr, blk gil stn, scat lt brn stn, even fluor(5-6% in try), flour GB & FO spts(afr 10% HCL), chlky, foss, Sh Gry-Aqua-Grn-Oliv-Mrn-soft fiss, Chrt Wht-Tan-Gry op shp vit

SPERGEN Ø 5102'(-2861)

30" CFS @ 5121' Dol/Ls Tan-Crm-Gry, Fxln, fair-good PP lnxln sucro por, vry friable, sli trc gluc, fair-good odr, sat brn stn, scat blk gil stn, even grn/yel fluor(5% in try), Good Show GB, Good Show FO in tray

60" CFS @ 5121' Dol/Ls Tan-Crm-Gry, Fxln, vgood PP lnxln/vug sucro por, trc gluc inclus, vry friable, good/strng odr, sat brn stn, scat blk gil stn, even grn/yel fluor(50% in try), Good Show GB, Good Show FO in tray, Sh vari color

Geologist released from location @ 8:50 pm on 10/28/2014

RTD 5121'. DST #2 (5090'-5121') Test tool stuck in hole. The tool was jarred free and pulled to surface where it was found to be broken in two. 21 feet of test tool and 31' of anchor remain down hole. Kansas Fishing Tools were notified on 10/28/14. Fishing operations were unsuccessful after attempting for 5 days. The decision was made on 11/2/14 to plug and abandon the well.

Rig released @ 7:00 am on 11/3/2014.

