



**Natural Gas • Crude Oil
Exploration & Production**

McCOY PETROLEUM CORPORATION

Wichita, Kansas

Scale 1:240 (5"=100') Imperial
Measured Depth Log

Well Name: YOHN 'A' #2-26
Location: Sec. 26 - T30S - R19W, Kiowa County, KS
License Number: API #: 15-097-21805-0000
Spud Date: September 10, 2014
Surface Coordinates: N/2 NE NW
330' FNL & 1980' FWL
Bottom Hole Coordinates:
Ground Elevation (ft): 2226' K.B. Elevation (ft): 2235'
Logged Interval (ft): 3900' To: 5225' Total Depth (ft): RTD 5225' LTD 5223'
Formation: Mississippian Warsaw
Type of Drilling Fluid: Chemical/Polymer/Gel

Region: Alford South Area
Drilling Completed: September 18, 2014

Printed by MUD.LOG from WellSight Systems 1-800-447-1534 www.WellSight.com

OPERATOR

Company: McCoy Petroleum Corporation, KCC License #5003
Address: 9342 E. Central Ave.
Wichita, KS 67206

GEOLOGIST

Name: Evan Stone
Company: McCoy Petroleum Corporation
Address: 9342 E. Central Ave.
Wichita, KS 67206

CASING & DEVIATION

Spud at 4:00 am on 09/10/14. Drilled 17-1/2" hole to 276'. Ran 6 joints of 48#; 13-3/8" surface casing. Tallied 261.38', set at 273' KB. Cut Texas shoe. Strapped bottom 3 joints. Tacked collars & pins. Cemented with 350 sks 60/40 POZ; 2% Gel; 3% CC; 1/4# CF. Cement did circulate. Plug down at 2:00 pm on 09/10/14. Basic Energy Svcs Cementing ticket #11133. Drilled 12-1/4" hole to 649'. Ran 15 joints of new 23# 8-5/8" surface casing. Tallied 633'. Landed at 645' KB. Strapped guide shoe and bottom 3 joints, tacked collars on all, then welded collar on top 3 joints. Basket at 264'. Cemented with 200 sks 60/40 POZ; 2% Gel, 3% CC, 1/4# CF & tailed with 100 sks A-Conn, 3% CC; & 1/4# CF. Cement did not circulate. Cemented through 1" tubing from top with 100 sks A-Con. Cemented did not come to surface. Job completed at 11:15 am on 09/11/14. Basic Energy Svcs Cementing ticket #11134.

Deviation Surveys Taken: @ 276' = 1 degree; @ 649' = 1 degree; @ 3525' = 1 degree; @ 4954' = 1 degree; @ 5125' = 1 degree; @ 5225' = 1 degree

LEGEND

LITHOLOGY

- Chert
- Dolomite
- Cherty dol
- Limestone
- Cherty ls
- Sandy ls
- Salt
- Shale
- Shale green

- Shale red
- Carb shale
- Siltstone
- Sandstone

MINERAL

- Calcite
- Chert
- Glauconite
- Pyrite

- Sand
- Silt

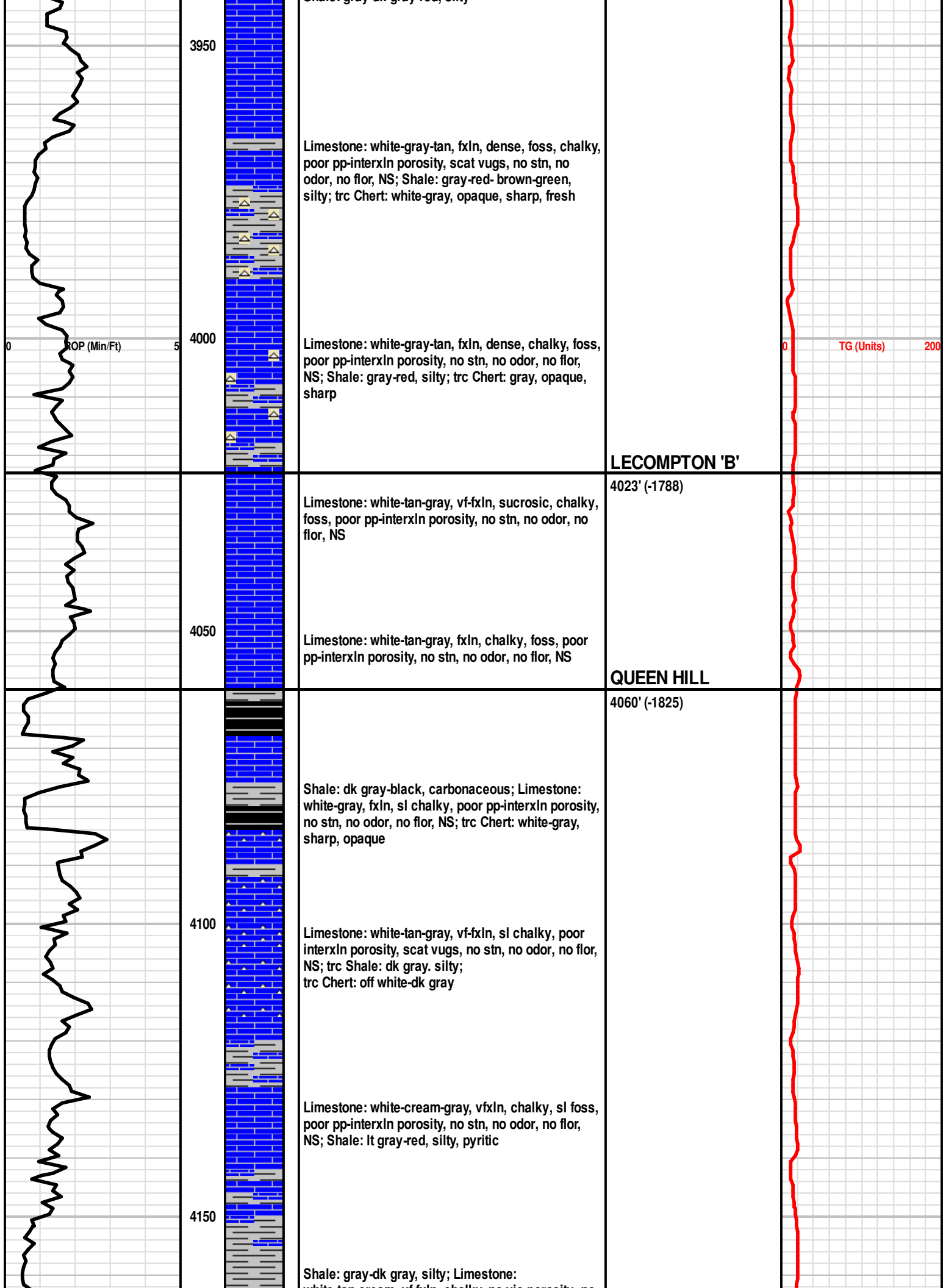
STRINGER

- Dolomite
- Gypsum
- Limestone
- Shale
- Siltstone
- Sandstone

OIL/GAS SHOW

- Gas show
- Good
- Fair
- Poor
- Dead

YOHN 'A' #2-26 ROP (Min/Ft)		DEPTH	LITHOLOGY	OIL/GAS SHOWS	SAMPLE DESCRIPTIONS	REMARKS	TOTAL GAS TG (Units)
	0	3800			<p style="text-align: center;">McCoy Petroleum Corporation</p> <p style="text-align: center;">Yohn 'A' #2-26 N/2 NE NW 330' FNL & 1980' FWL Sec. 26 - T30S - R19W Alford South Area Kiowa County, KS</p> <p>API: 15-097-21805-0000</p> <p>Sterling Drilling: Rig #4</p> <p>Elevations: 2235' KB 2226' GL</p> <p>Geologist: Evan Stone</p> <p>Mud displacement @ 3525'</p> <p>Geologist on location: 4310' at 10:00 pm on 9/15/2014</p> <p>Begin 31' Kelly Down Sample Examination @ 3900'</p> <p>Limestone: white-gray-tan, vfxln, dense, foss, chalky, no vis porosity, no stn, no odor, no flor, NS; Shale: gray-dk gray-red, silty</p> <p>Limestone: white-gray, vf-fxln, dense, foss, sl chalky, no vis porosity, no stn, no odor, no flor, NS; Shale: gray-dk gray-red, silty</p>		<p style="text-align: right;">TG (Units) 200</p>



Limestone: white-gray-tan, fxln, dense, foss, chalky, poor pp-interxln porosity, scat vugs, no stn, no odor, no flor, NS; Shale: gray-red- brown-green, silty; trc Chert: white-gray, opaque, sharp, fresh

Limestone: white-gray-tan, fxln, dense, chalky, foss, poor pp-interxln porosity, no stn, no odor, no flor, NS; Shale: gray-red, silty; trc Chert: gray, opaque, sharp

Limestone: white-tan-gray, vf-fxln, sucrosic, chalky, foss, poor pp-interxln porosity, no stn, no odor, no flor, NS

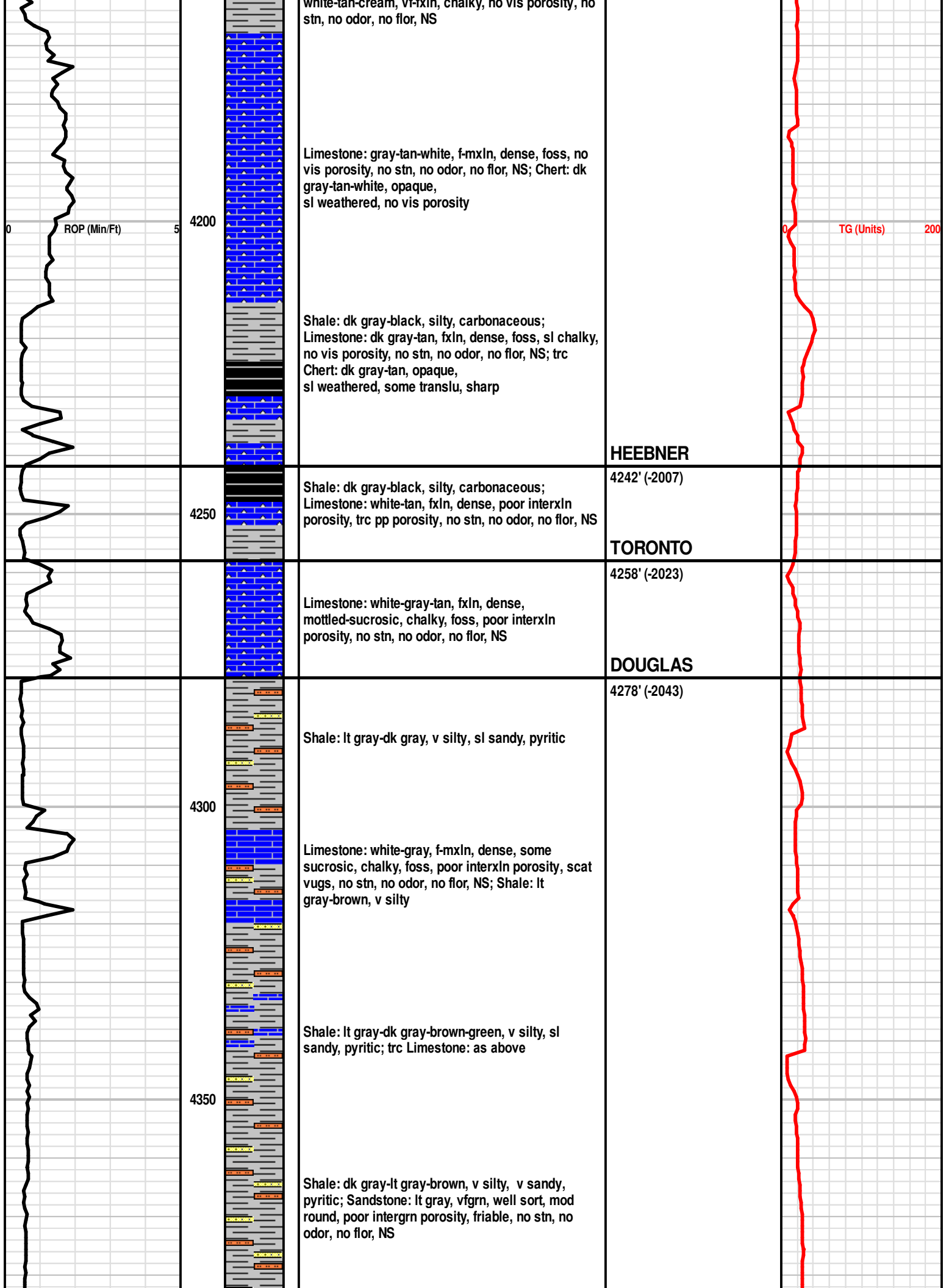
Limestone: white-tan-gray, fxln, chalky, foss, poor pp-interxln porosity, no stn, no odor, no flor, NS

Shale: dk gray-black, carbonaceous; Limestone: white-gray, fxln, sl chalky, poor pp-interxln porosity, no stn, no odor, no flor, NS; trc Chert: white-gray, sharp, opaque

Limestone: white-tan-gray, vf-fxln, sl chalky, poor interxln porosity, scat vugs, no stn, no odor, no flor, NS; trc Shale: dk gray. silty; trc Chert: off white-dk gray

Limestone: white-cream-gray, vfxln, chalky, sl foss, poor pp-interxln porosity, no stn, no odor, no flor, NS; Shale: lt gray-red, silty, pyritic

Shale: gray-dk gray, silty; Limestone: white-tan-gray, vf-fxln, chalky, poor pp-interxln porosity, no stn, no odor, no flor, NS; trc Chert: off white-dk gray



white-tan-cream, v-fxlIn, chalky, no vis porosity, no stn, no odor, no flor, NS

Limestone: gray-tan-white, f-mxlIn, dense, foss, no vis porosity, no stn, no odor, no flor, NS; Chert: dk gray-tan-white, opaque, sl weathered, no vis porosity

Shale: dk gray-black, silty, carbonaceous; Limestone: dk gray-tan, fxlIn, dense, foss, sl chalky, no vis porosity, no stn, no odor, no flor, NS; trc Chert: dk gray-tan, opaque, sl weathered, some translu, sharp

HEEBNER

4242' (-2007)

TORONTO

Shale: dk gray-black, silty, carbonaceous; Limestone: white-tan, fxlIn, dense, poor interxlIn porosity, trc pp porosity, no stn, no odor, no flor, NS

4258' (-2023)

DOUGLAS

4278' (-2043)

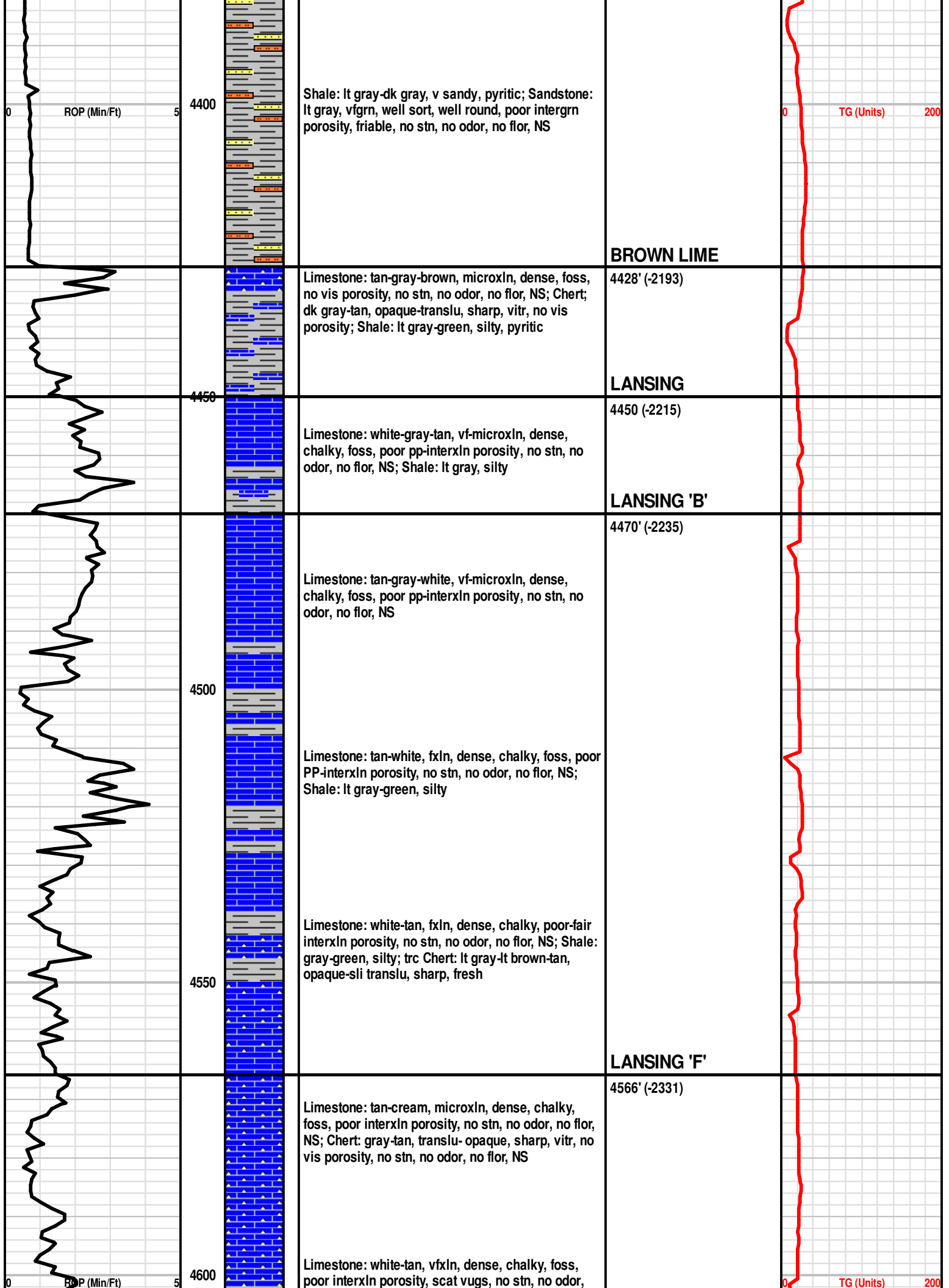
Limestone: white-gray-tan, fxlIn, dense, mottled-sucrosic, chalky, foss, poor interxlIn porosity, no stn, no odor, no flor, NS

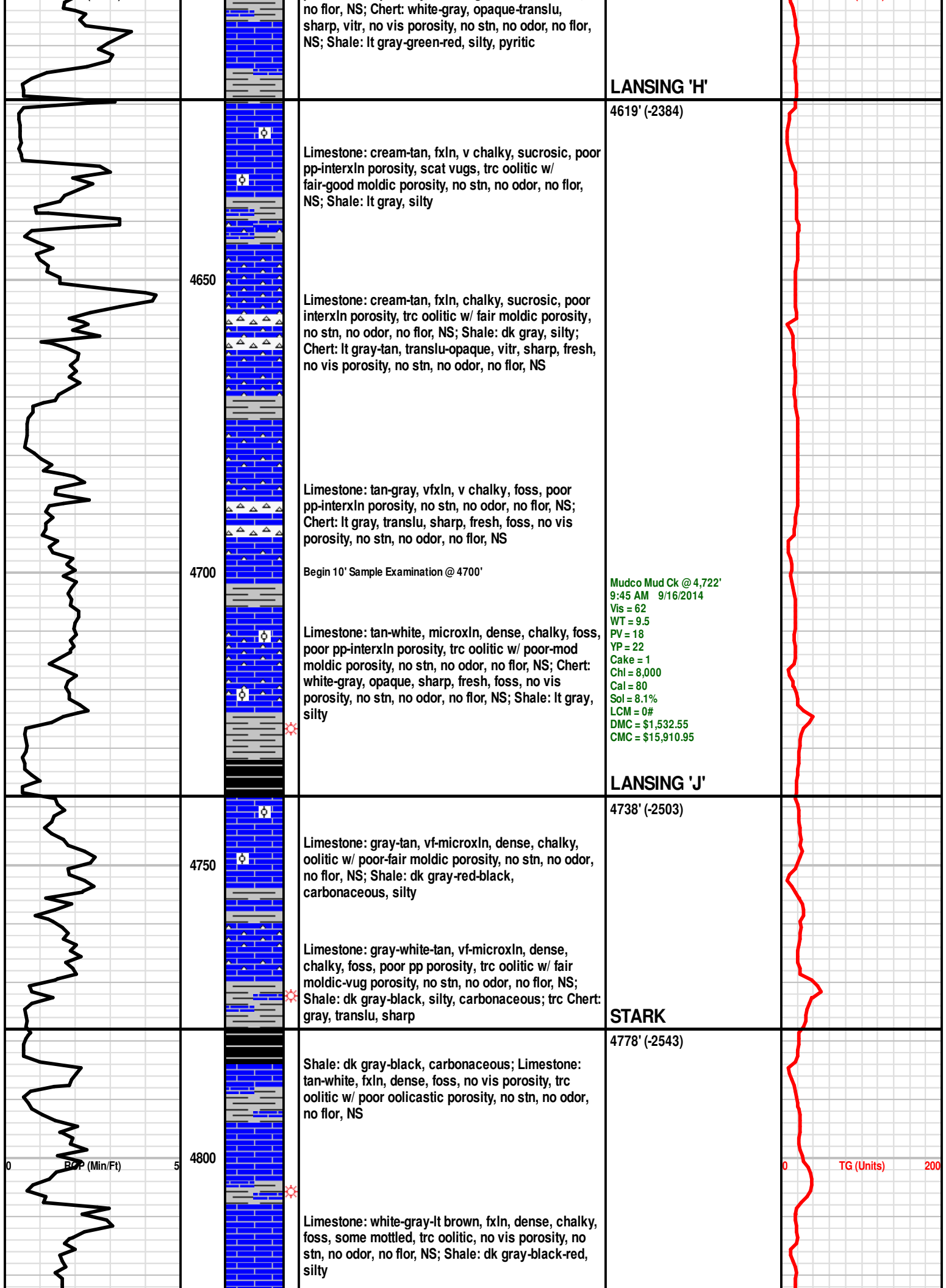
Shale: lt gray-dk gray, v silty, sl sandy, pyritic

Limestone: white-gray, f-mxlIn, dense, some sucrosic, chalky, foss, poor interxlIn porosity, scat vugs, no stn, no odor, no flor, NS; Shale: lt gray-brown, v silty

Shale: lt gray-dk gray-brown-green, v silty, sl sandy, pyritic; trc Limestone: as above

Shale: dk gray-lt gray-brown, v silty, v sandy, pyritic; Sandstone: lt gray, vfgrn, well sort, mod round, poor intergrn porosity, friable, no stn, no odor, no flor, NS





no flor, NS; Chert: white-gray, opaque-translu, sharp, vitr, no vis porosity, no stn, no odor, no flor, NS; Shale: lt gray-green-red, silty, pyritic

LANSING 'H'

4619' (-2384)

Limestone: cream-tan, fxln, v chalky, sucrosic, poor pp-interxln porosity, scat vugs, trc oolitic w/ fair-good moldic porosity, no stn, no odor, no flor, NS; Shale: lt gray, silty

4650

Limestone: cream-tan, fxln, chalky, sucrosic, poor interxln porosity, trc oolitic w/ fair moldic porosity, no stn, no odor, no flor, NS; Shale: dk gray, silty; Chert: lt gray-tan, translu-opaque, vitr, sharp, fresh, no vis porosity, no stn, no odor, no flor, NS

4700

Limestone: tan-gray, vfxln, v chalky, foss, poor pp-interxln porosity, no stn, no odor, no flor, NS; Chert: lt gray, translu, sharp, fresh, foss, no vis porosity, no stn, no odor, no flor, NS

Begin 10' Sample Examination @ 4700'

Limestone: tan-white, microxln, dense, chalky, foss, poor pp-interxln porosity, trc oolitic w/ poor-mod moldic porosity, no stn, no odor, no flor, NS; Chert: white-gray, opaque, sharp, fresh, foss, no vis porosity, no stn, no odor, no flor, NS; Shale: lt gray, silty

Mudco Mud Ck @ 4,722'
 9:45 AM 9/16/2014
 Vis = 62
 WT = 9.5
 PV = 18
 YP = 22
 Cake = 1
 Chl = 8,000
 Cal = 80
 Sol = 8.1%
 LCM = 0#
 DMC = \$1,532.55
 CMC = \$15,910.95

LANSING 'J'

4738' (-2503)

4750

Limestone: gray-tan, vf-microxln, dense, chalky, oolitic w/ poor-fair moldic porosity, no stn, no odor, no flor, NS; Shale: dk gray-red-black, carbonaceous, silty

Limestone: gray-white-tan, vf-microxln, dense, chalky, foss, poor pp porosity, trc oolitic w/ fair moldic-vug porosity, no stn, no odor, no flor, NS; Shale: dk gray-black, silty, carbonaceous; trc Chert: gray, translu, sharp

STARK

4778' (-2543)

4800

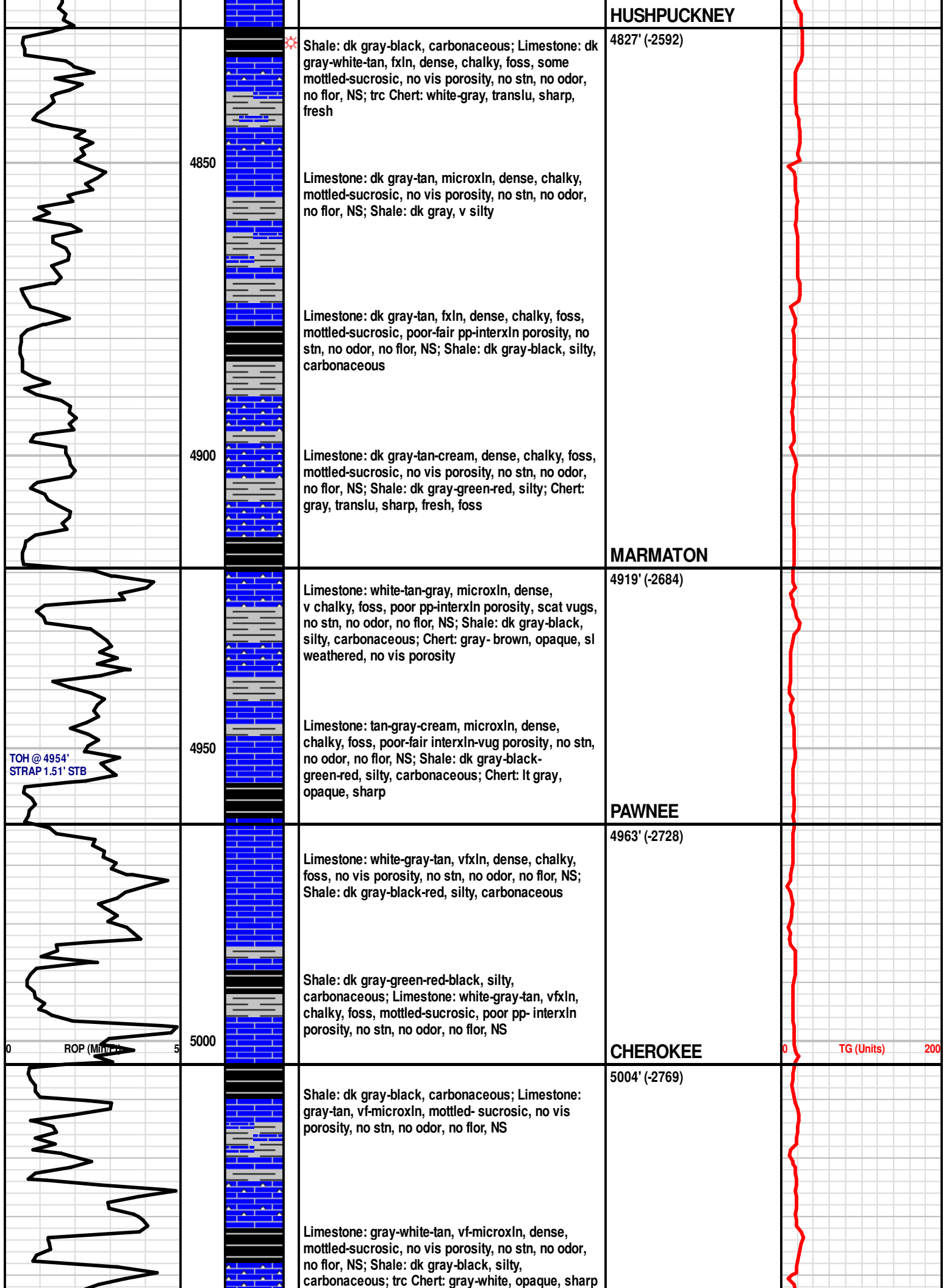
Shale: dk gray-black, carbonaceous; Limestone: tan-white, fxln, dense, foss, no vis porosity, trc oolitic w/ poor oolitic porosity, no stn, no odor, no flor, NS

Limestone: white-gray-lt brown, fxln, dense, chalky, foss, some mottled, trc oolitic, no vis porosity, no stn, no odor, no flor, NS; Shale: dk gray-black-red, silty

BOP (Min/Ft)

TG (Units)

200



HUSHPUCKNEY

★ Shale: dk gray-black, carbonaceous; Limestone: dk gray-white-tan, fxl, dense, chalky, foss, some mottled-sucrosic, no vis porosity, no stn, no odor, no flor, NS; trc Chert: white-gray, transl, sharp, fresh

4827' (-2592)

Limestone: dk gray-tan, microxl, dense, chalky, mottled-sucrosic, no vis porosity, no stn, no odor, no flor, NS; Shale: dk gray, v silty

Limestone: dk gray-tan, fxl, dense, chalky, foss, mottled-sucrosic, poor-fair pp-interxl porosity, no stn, no odor, no flor, NS; Shale: dk gray-black, silty, carbonaceous

Limestone: dk gray-tan-cream, dense, chalky, foss, mottled-sucrosic, no vis porosity, no stn, no odor, no flor, NS; Shale: dk gray-green-red, silty; Chert: gray, transl, sharp, fresh, foss

MARMATON

Limestone: white-tan-gray, microxl, dense, v chalky, foss, poor pp-interxl porosity, scat vugs, no stn, no odor, no flor, NS; Shale: dk gray-black, silty, carbonaceous; Chert: gray-brown, opaque, sl weathered, no vis porosity

4919' (-2684)

Limestone: tan-gray-cream, microxl, dense, chalky, foss, poor-fair interxl-vug porosity, no stn, no odor, no flor, NS; Shale: dk gray-black-green-red, silty, carbonaceous; Chert: lt gray, opaque, sharp

PAWNEE

Limestone: white-gray-tan, vfxl, dense, chalky, foss, no vis porosity, no stn, no odor, no flor, NS; Shale: dk gray-black-red, silty, carbonaceous

4963' (-2728)

Shale: dk gray-green-red-black, silty, carbonaceous; Limestone: white-gray-tan, vfxl, chalky, foss, mottled-sucrosic, poor pp-interxl porosity, no stn, no odor, no flor, NS

CHEROKEE

Shale: dk gray-black, carbonaceous; Limestone: gray-tan, vf-microxl, mottled-sucrosic, no vis porosity, no stn, no odor, no flor, NS

5004' (-2769)

Limestone: gray-white-tan, vf-microxl, dense, mottled-sucrosic, no vis porosity, no stn, no odor, no flor, NS; Shale: dk gray-black, silty, carbonaceous; trc Chert: gray-white, opaque, sharp

TOH @ 4954'
STRAP 1.51' STB

ROP (Mitt)

TG (Units)

200

