



DRILL STEM TEST REPORT

Prepared For: **Cobalt Energy LLC**

PO Box 8037
Wichita KS 67208

ATTN: Terry McLeod

Davis-Heskett A 1-31

31-7s-25w, Graham, KS

Start Date: 2014.10.28 @ 00:20:00

End Date: 2014.10.28 @ 08:56:15

Job Ticket #: 60944 DST #: 1

Trilobite Testing, Inc
1515 Commerce Parkway Hays, KS 67601
ph: 785-625-4778 fax: 785-625-5620

Printed: 2014.10.31 @ 14:49:15



**TRILOBITE
TESTING, INC**

DRILL STEM TEST REPORT

Cobalt Energy LLC

31-7s-25w, Graham, KS

PO Box 8037
Wichita KS 67208

Davis-Heskett A 1-31

Job Ticket: 60944

DST#: 1

ATTN: Terry McLeod

Test Start: 2014.10.28 @ 00:20:00

GENERAL INFORMATION:

Formation: **KC "C-D"**

Deviated: No Whipstock: ft (KB)

Time Tool Opened: 03:30:00

Time Test Ended: 08:56:15

Test Type: Conventional Bottom Hole (Initial)

Tester: Brett Dickinson

Unit No: 59

Interval: 3741.00 ft (KB) To 3820.00 ft (KB) (TVD)

Reference Elevations: 2997.00 ft (KB)

Total Depth: 3820.00 ft (KB) (TVD)

2992.00 ft (CF)

Hole Diameter: 7.88 inches Hole Condition: Poor

KB to GR/CF: 5.00 ft

Serial #: 8934 Outside

Press@RunDepth: 87.58 psig @ 3751.00 ft (KB)

Capacity: 8000.00 psig

Start Date: 2014.10.28

End Date: 2014.10.28

Last Calib.: 2014.10.28

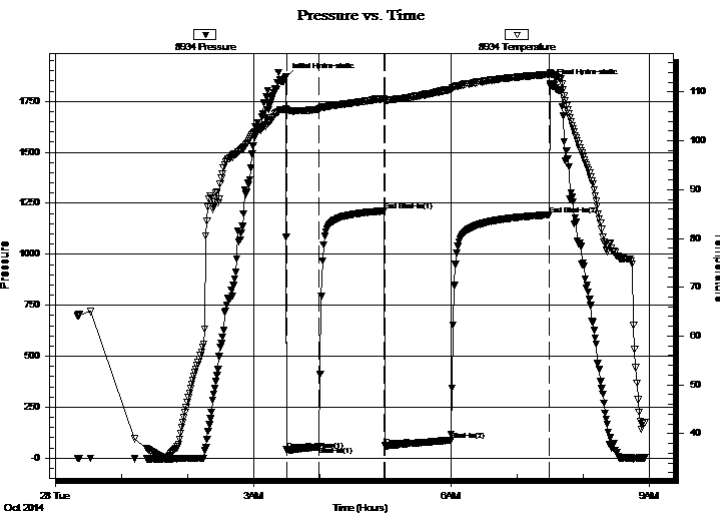
Start Time: 00:20:05

End Time: 08:56:15

Time On Btm: 2014.10.28 @ 03:29:30

Time Off Btm: 2014.10.28 @ 07:30:15

TEST COMMENT: IF-2 1/2" blow
IS-No blow
FF-2" blow
FSI-No blow



PRESSURE SUMMARY

| Time (Min.) | Pressure (psig) | Temp (deg F) | Annotation |
|-------------|-----------------|--------------|----------------------|
| 0 | 1869.30 | 106.49 | Initial Hydro-static |
| 1 | 40.07 | 106.09 | Open To Flow (1) |
| 31 | 56.50 | 106.48 | Shut-In(1) |
| 90 | 1212.60 | 108.67 | End Shut-In(1) |
| 91 | 60.02 | 108.37 | Open To Flow (2) |
| 150 | 87.58 | 110.53 | Shut-In(2) |
| 240 | 1193.56 | 113.61 | End Shut-In(2) |
| 241 | 1837.85 | 113.79 | Final Hydro-static |

Recovery

| Length (ft) | Description | Volume (bbl) |
|-------------|-------------|--------------|
| 140.00 | Mud | 1.69 |
| | | |
| | | |
| | | |
| | | |

Gas Rates

| Choke (inches) | Pressure (psig) | Gas Rate (Mcf/d) |
|----------------|-----------------|------------------|
| | | |



TRILOBITE TESTING, INC

DRILL STEM TEST REPORT

Cobalt Energy LLC

PO Box 8037
Wichita KS 67208

ATTN: Terry McLeod

31-7s-25w, Graham, KS

Davis-Heskett A 1-31

Job Ticket: 60944

DST#: 1

Test Start: 2014.10.28 @ 00:20:00

GENERAL INFORMATION:

Formation: **KC "C-D"**

Deviated: No Whipstock: ft (KB)

Time Tool Opened: 03:30:00

Time Test Ended: 08:56:15

Test Type: Conventional Bottom Hole (Initial)

Tester: Brett Dickinson

Unit No: 59

Interval: **3741.00 ft (KB) To 3820.00 ft (KB) (TVD)**

Total Depth: 3820.00 ft (KB) (TVD)

Hole Diameter: 7.88 inches Hole Condition: Poor

Reference Elevations: 2997.00 ft (KB)

2992.00 ft (CF)

KB to GR/CF: 5.00 ft

Serial #: 8736

Inside

Press@RunDepth: psig @ 3751.00 ft (KB)

Start Date: 2014.10.28

End Date:

2014.10.28

Start Time: 00:20:05

End Time:

08:56:00

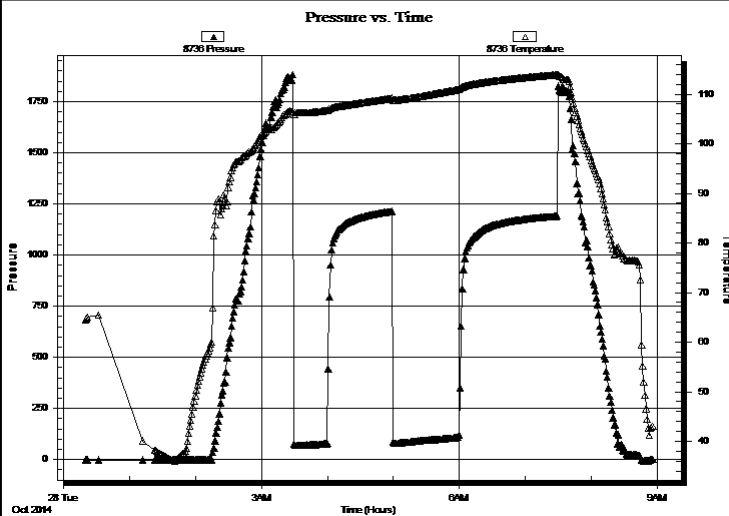
Capacity: 8000.00 psig

Last Calib.: 2014.10.28

Time On Btm:

Time Off Btm:

TEST COMMENT: IF-2 1/2" blow
IS-No blow
FF-2" blow
FS-No blow



PRESSURE SUMMARY

| Time (Min.) | Pressure (psig) | Temp (deg F) | Annotation |
|-------------|-----------------|--------------|------------|
| | | | |
| | | | |
| | | | |
| | | | |
| | | | |
| | | | |
| | | | |
| | | | |

Recovery

| Length (ft) | Description | Volume (bbl) |
|-------------|-------------|--------------|
| 140.00 | Mud | 1.69 |
| | | |
| | | |
| | | |
| | | |

Gas Rates

| | Choke (inches) | Pressure (psig) | Gas Rate (Mcf/d) |
|--|----------------|-----------------|------------------|
| | | | |



**TRILOBITE
TESTING, INC.**

DRILL STEM TEST REPORT

TOOL DIAGRAM

Cobalt Energy LLC

31-7s-25w, Graham, KS

PO Box 8037
Wichita KS 67208

Davis-Heskett A 1-31

Job Ticket: 60944

DST#: 1

ATTN: Terry McLeod

Test Start: 2014.10.28 @ 00:20:00

Tool Information

| | | | | |
|---------------------------|--------------------|-----------------------|----------------------------|------------------------------------|
| Drill Pipe: | Length: 3708.00 ft | Diameter: 3.80 inches | Volume: 52.01 bbl | Tool Weight: 2000.00 lb |
| Heavy Wt. Pipe: | Length: ft | Diameter: 2.70 inches | Volume: - bbl | Weight set on Packer: 25000.00 lb |
| Drill Collar: | Length: 30.00 ft | Diameter: 2.25 inches | Volume: 0.15 bbl | Weight to Pull Loose: 55000.00 lb |
| | | | <u>Total Volume: - bbl</u> | Tool Chased 5.00 ft |
| Drill Pipe Above KB: | 20.00 ft | | | String Weight: Initial 51000.00 lb |
| Depth to Top Packer: | 3741.00 ft | | | Final 51000.00 lb |
| Depth to Bottom Packer: | ft | | | |
| Interval between Packers: | 79.00 ft | | | |
| Tool Length: | 102.00 ft | | | |
| Number of Packers: | 2 | Diameter: 6.75 inches | | |

Tool Comments:

| Tool Description | Length (ft) | Serial No. | Position | Depth (ft) | Accum. Lengths |
|------------------|-------------|------------|----------|------------|----------------|
|------------------|-------------|------------|----------|------------|----------------|

| | | | | | |
|-----------------|-------|------|---------|---------|-------------------------------|
| Shut In Tool | 5.00 | | | 3723.00 | |
| Hydraulic tool | 5.00 | | | 3728.00 | |
| Safety Joint | 3.00 | | | 3731.00 | |
| Packer | 5.00 | | | 3736.00 | 23.00 Bottom Of Top Packer |
| Packer | 5.00 | | | 3741.00 | |
| Stubb | 1.00 | | | 3742.00 | |
| Perforations | 9.00 | | | 3751.00 | |
| Recorder | 0.00 | 8736 | Inside | 3751.00 | |
| Recorder | 0.00 | 8934 | Outside | 3751.00 | |
| Change Over Sub | 1.00 | | | 3752.00 | |
| Drill Pipe | 63.00 | | | 3815.00 | |
| Change Over Sub | 1.00 | | | 3816.00 | |
| Perforations | 1.00 | | | 3817.00 | |
| Bullnose | 3.00 | | | 3820.00 | 79.00 Bottom Packers & Anchor |

Total Tool Length: 102.00



**TRILOBITE
TESTING, INC**

DRILL STEM TEST REPORT

FLUID SUMMARY

Cobalt Energy LLC

31-7s-25w, Graham, KS

PO Box 8037
Wichita KS 67208

Davis-Heskett A 1-31

Job Ticket: 60944

DST#: 1

ATTN: Terry McLeod

Test Start: 2014.10.28 @ 00:20:00

Mud and Cushion Information

Mud Type: Gel Chem

Cushion Type:

Oil API:

deg API

Mud Weight: 9.00 lb/gal

Cushion Length:

ft

Water Salinity:

ppm

Viscosity: 49.00 sec/qt

Cushion Volume:

bbbl

Water Loss: 5.99 in³

Gas Cushion Type:

Resistivity: ohm.m

Gas Cushion Pressure:

psig

Salinity: 900.00 ppm

Filter Cake: inches

Recovery Information

Recovery Table

| Length ft | Description | Volume bbl |
|--------------|-------------|---------------|
| 140.00 | Mud | 1.691 |

Total Length: 140.00 ft

Total Volume: 1.691 bbl

Num Fluid Samples: 0

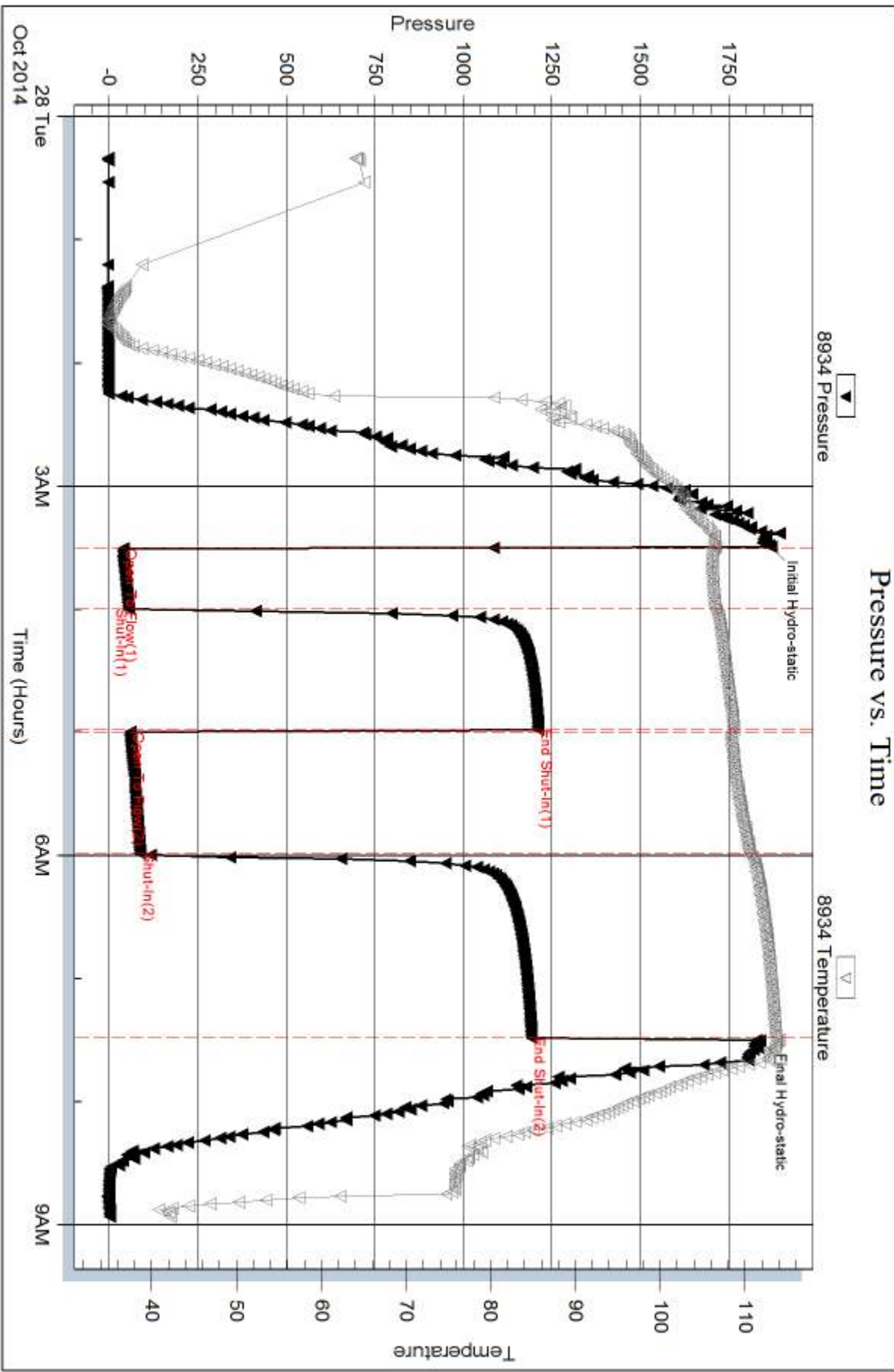
Num Gas Bombs: 0

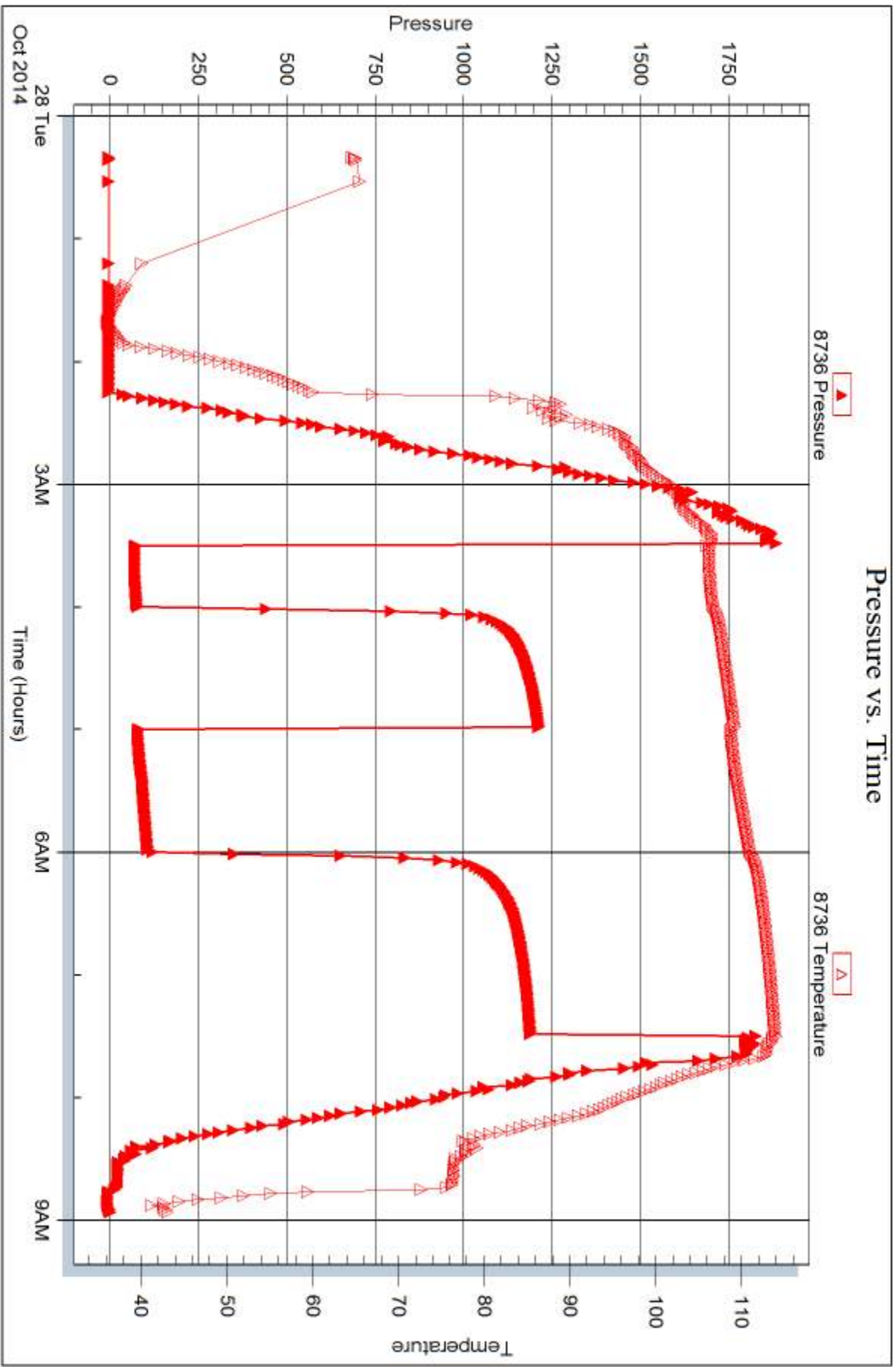
Serial #:

Laboratory Name:

Laboratory Location:

Recovery Comments:







DRILL STEM TEST REPORT

Prepared For: **Cobalt Energy LLC**

PO Box 8037
Wichita KS 67208

ATTN: Terry McLeod

Davis-Heskett A 1-31

31-7s-25w, Graham, KS

Start Date: 2014.10.28 @ 15:57:00

End Date: 2014.10.28 @ 22:44:45

Job Ticket #: 60945 DST #: 2

Trilobite Testing, Inc
1515 Commerce Parkway Hays, KS 67601
ph: 785-625-4778 fax: 785-625-5620

Printed: 2014.10.31 @ 14:48:50



**TRILOBITE
TESTING, INC**

DRILL STEM TEST REPORT

Cobalt Energy LLC

31-7s-25w, Graham, KS

PO Box 8037
Wichita KS 67208

Davis-Heskett A 1-31

ATTN: Terry McLeod

Job Ticket: 60945

DST#: 2

Test Start: 2014.10.28 @ 15:57:00

GENERAL INFORMATION:

Formation: **KC "H"**

Deviated: No Whipstock: ft (KB)

Time Tool Opened: 17:36:30

Time Test Ended: 22:44:45

Test Type: Conventional Bottom Hole (Reset)

Tester: Brett Dickinson

Unit No: 59

Interval: 3840.00 ft (KB) To 3880.00 ft (KB) (TVD)

Reference Elevations: 2997.00 ft (KB)

Total Depth: 3880.00 ft (KB) (TVD)

2992.00 ft (CF)

Hole Diameter: 7.88 inches Hole Condition: Poor

KB to GR/CF: 5.00 ft

Serial #: 8934 Outside

Press@RunDepth: 37.84 psig @ 3843.00 ft (KB)

Capacity: 8000.00 psig

Start Date: 2014.10.28 End Date: 2014.10.28

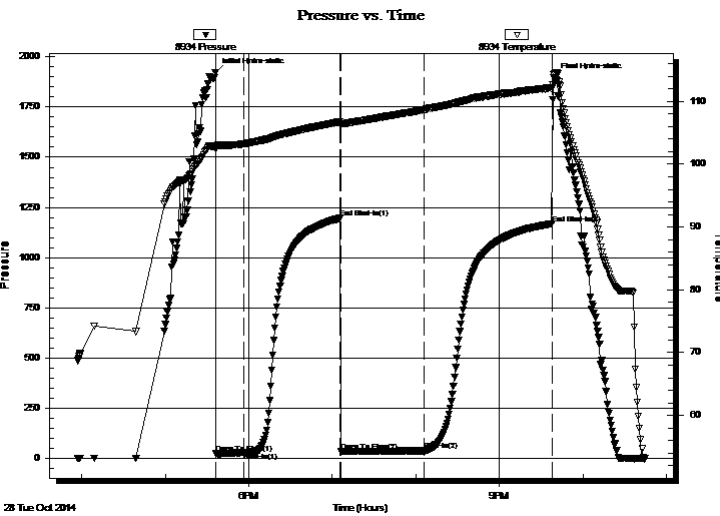
Last Calib.: 2014.10.28

Start Time: 15:57:05 End Time: 22:44:44

Time On Btm: 2014.10.28 @ 17:36:00

Time Off Btm: 2014.10.28 @ 21:39:00

TEST COMMENT: IF-1/2in blow died back to 1/4"
IS-No blow
FF-very weak surface blow died in 45 min
FS-No blow



PRESSURE SUMMARY

| Time (Min.) | Pressure (psig) | Temp (deg F) | Annotation |
|-------------|-----------------|--------------|----------------------|
| 0 | 1922.46 | 102.61 | Initial Hydro-static |
| 1 | 22.62 | 102.44 | Open To Flow (1) |
| 21 | 29.72 | 103.26 | Shut-In(1) |
| 90 | 1195.54 | 106.73 | End Shut-In(1) |
| 90 | 35.06 | 106.46 | Open To Flow (2) |
| 150 | 37.84 | 108.68 | Shut-In(2) |
| 242 | 1168.73 | 112.20 | End Shut-In(2) |
| 243 | 1898.06 | 114.20 | Final Hydro-static |

Recovery

| Length (ft) | Description | Volume (bbl) |
|-------------|----------------|--------------|
| 50.00 | VSOCM 5%O 95%M | 0.43 |
| | | |
| | | |
| | | |
| | | |

* Recovery from multiple tests

Gas Rates

| Choke (inches) | Pressure (psig) | Gas Rate (Mcf/d) |
|----------------|-----------------|------------------|
| | | |



DRILL STEM TEST REPORT

Cobalt Energy LLC

31-7s-25w, Graham, KS

PO Box 8037
Wichita KS 67208

Davis-Heskett A 1-31

ATTN: Terry McLeod

Job Ticket: 60945

DST#: 2

Test Start: 2014.10.28 @ 15:57:00

GENERAL INFORMATION:

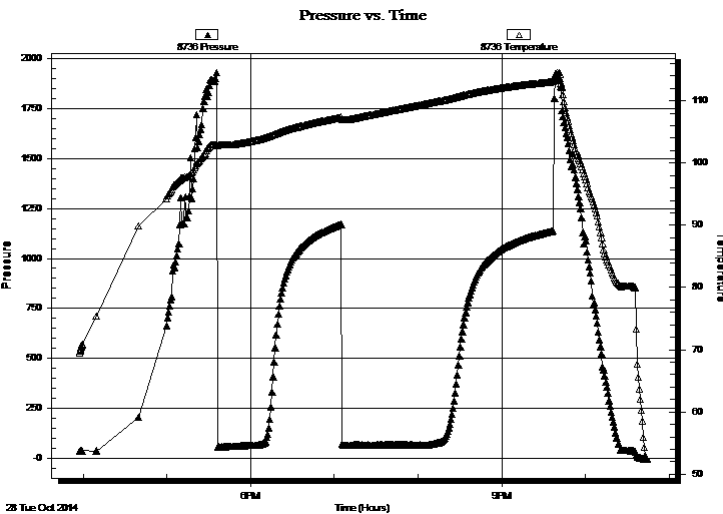
| | | | |
|---|----------------------|---------|---|
| Formation: KC "H" | | | |
| Deviated: No Whipstock: | | ft (KB) | Test Type: Conventional Bottom Hole (Reset) |
| Time Tool Opened: 17:36:30 | | | Tester: Brett Dickinson |
| Time Test Ended: 22:44:45 | | | Unit No: 59 |
| Interval: 3840.00 ft (KB) To 3880.00 ft (KB) (TVD) | | | Reference Elevations: 2997.00 ft (KB) |
| Total Depth: 3880.00 ft (KB) (TVD) | | | 2992.00 ft (CF) |
| Hole Diameter: 7.88 inches | Hole Condition: Poor | | KB to GR/CF: 5.00 ft |

Serial #: 8736

Inside

| | |
|--|---|
| Press@RunDepth: psig @ 3843.00 ft (KB) | Capacity: 8000.00 psig |
| Start Date: 2014.10.28 End Date: 2014.10.28 | Last Calib.: 2014.10.28 |
| Start Time: 15:57:23 End Time: 22:44:17 | Time On Btm: |
| | Time Off Btm: |

TEST COMMENT: IF-1/2in blow died back to 1/4"
IS-No blow
FF-very weak surface blow died in 45 min
FS-No blow



PRESSURE SUMMARY

| Time (Min.) | Pressure (psig) | Temp (deg F) | Annotation |
|-------------|-----------------|--------------|------------|
| | | | |

Recovery

| Length (ft) | Description | Volume (bbl) |
|-------------|----------------|--------------|
| 50.00 | VSOCM 5%O 95%M | 0.43 |
| | | |
| | | |
| | | |
| | | |

* Recovery from multiple tests

Gas Rates

| Choke (inches) | Pressure (psig) | Gas Rate (Mcf/d) |
|----------------|-----------------|------------------|
| | | |



**TRILOBITE
TESTING, INC.**

DRILL STEM TEST REPORT

TOOL DIAGRAM

Cobalt Energy LLC

31-7s-25w, Graham, KS

PO Box 8037
Wichita KS 67208

Davis-Heskett A 1-31

ATTN: Terry McLeod

Job Ticket: 60945

DST#: 2

Test Start: 2014.10.28 @ 15:57:00

Tool Information

| | | | | | |
|---------------------------|--------------------|-----------------------|----------------------|------------------------|-------------|
| Drill Pipe: | Length: 3805.00 ft | Diameter: 3.80 inches | Volume: 53.37 bbl | Tool Weight: | 2000.00 lb |
| Heavy Wt. Pipe: | Length: ft | Diameter: 2.70 inches | Volume: - bbl | Weight set on Packer: | 25000.00 lb |
| Drill Collar: | Length: 30.00 ft | Diameter: 2.25 inches | Volume: 0.15 bbl | Weight to Pull Loose: | 55000.00 lb |
| | | | <u>Total Volume:</u> | Tool Chased | 0.00 ft |
| Drill Pipe Above KB: | 18.00 ft | | | String Weight: Initial | 51000.00 lb |
| Depth to Top Packer: | 3840.00 ft | | | Final | 51000.00 lb |
| Depth to Bottom Packer: | ft | | | | |
| Interval between Packers: | 40.00 ft | | | | |
| Tool Length: | 63.00 ft | | | | |
| Number of Packers: | 2 | Diameter: 6.75 inches | | | |

Tool Comments:

Tool Description

| Tool Description | Length (ft) | Serial No. | Position | Depth (ft) | Accum. Lengths |
|------------------|-------------|------------|----------|------------|-------------------------------|
| Shut In Tool | 5.00 | | | 3822.00 | |
| Hydraulic tool | 5.00 | | | 3827.00 | |
| Safety Joint | 3.00 | | | 3830.00 | |
| Packer | 5.00 | | | 3835.00 | 23.00 Bottom Of Top Packer |
| Packer | 5.00 | | | 3840.00 | |
| Stubb | 1.00 | | | 3841.00 | |
| Perforations | 2.00 | | | 3843.00 | |
| Recorder | 0.00 | 8736 | Inside | 3843.00 | |
| Recorder | 0.00 | 8934 | Outside | 3843.00 | |
| Change Over Sub | 1.00 | | | 3844.00 | |
| Drill Pipe | 31.00 | | | 3875.00 | |
| Change Over Sub | 1.00 | | | 3876.00 | |
| Perforations | 1.00 | | | 3877.00 | |
| Bullnose | 3.00 | | | 3880.00 | 40.00 Bottom Packers & Anchor |

Total Tool Length: 63.00



**TRILOBITE
TESTING, INC**

DRILL STEM TEST REPORT

FLUID SUMMARY

Cobalt Energy LLC

31-7s-25w, Graham, KS

PO Box 8037
Wichita KS 67208

Davis-Heskett A 1-31

Job Ticket: 60945

DST#: 2

ATTN: Terry McLeod

Test Start: 2014.10.28 @ 15:57:00

Mud and Cushion Information

Mud Type: Gel Chem

Cushion Type:

Oil API:

deg API

Mud Weight: 9.00 lb/gal

Cushion Length:

ft

Water Salinity:

ppm

Viscosity: 49.00 sec/qt

Cushion Volume:

bbbl

Water Loss: 5.98 in³

Gas Cushion Type:

Resistivity: ohm.m

Gas Cushion Pressure:

psig

Salinity: 900.00 ppm

Filter Cake: inches

Recovery Information

Recovery Table

| Length ft | Description | Volume bbl |
|--------------|----------------|---------------|
| 50.00 | VSOCM 5%O 95%M | 0.428 |

Total Length: 50.00 ft Total Volume: 0.428 bbl

Num Fluid Samples: 0

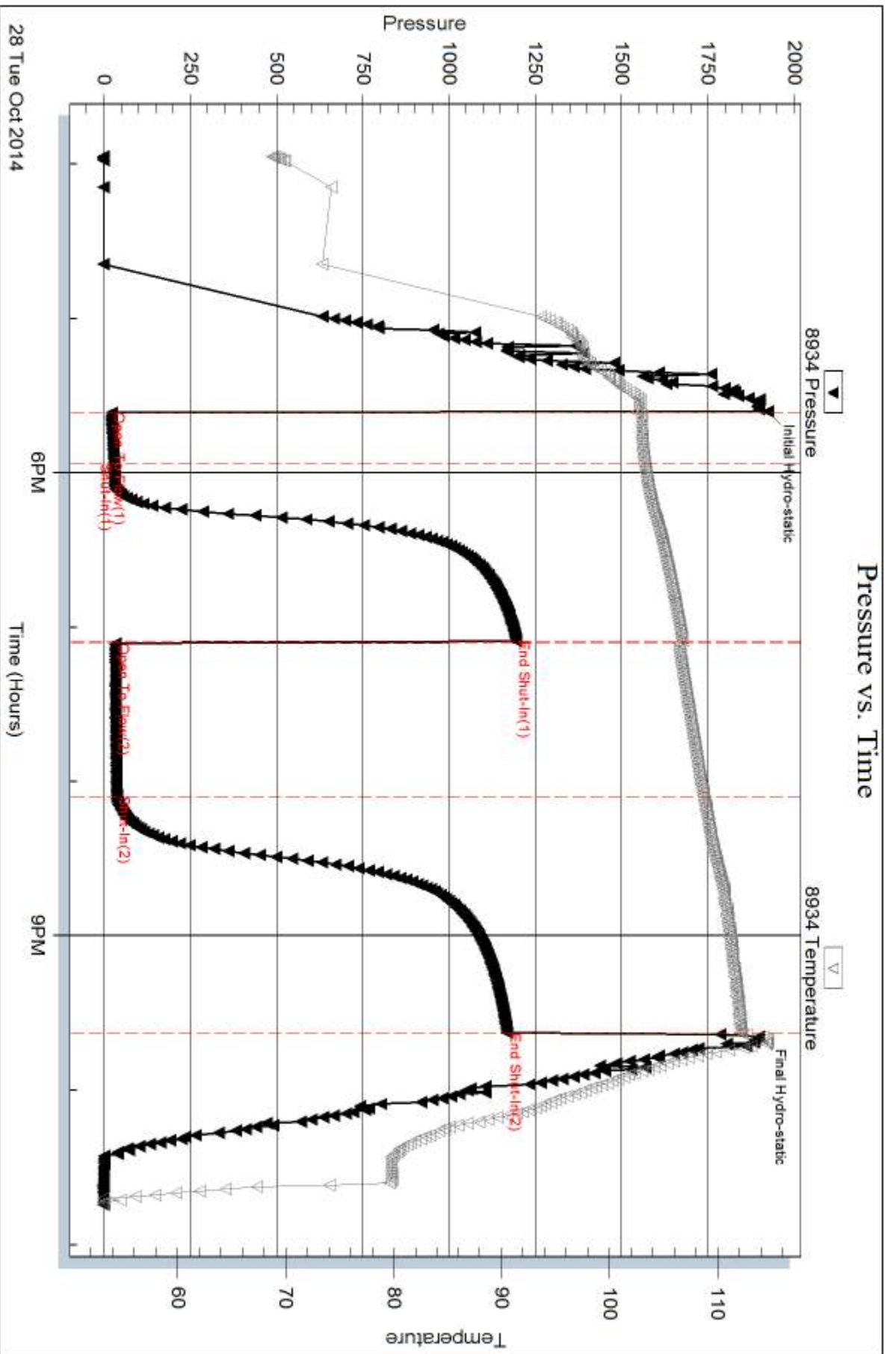
Num Gas Bombs: 0

Serial #:

Laboratory Name:

Laboratory Location:

Recovery Comments:



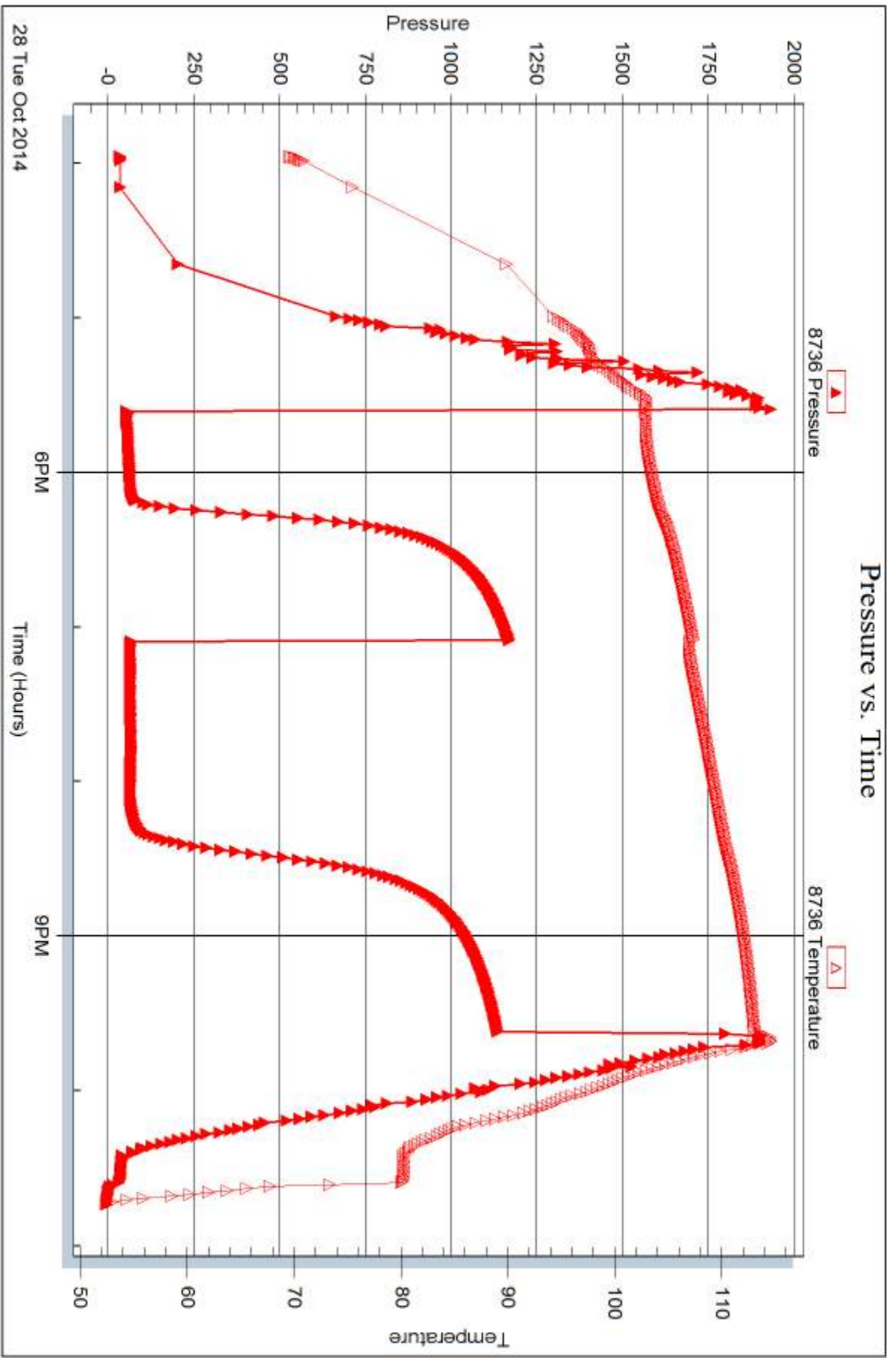
Serial #: 8736

Inside

Cobalt Energy LLC

Davis-Heskett A 1-31

DST Test Number: 2



28 Tue Oct 2014

Trilobite Testing, Inc

Ref. No: 60945

Printed: 2014, 10, 31 @ 14:48:52



DRILL STEM TEST REPORT

Prepared For: **Cobalt Energy LLC**

PO Box 8037
Wichita KS 67208

ATTN: Terry McLeod

Davis-Heskett A 1-31

31-7s-25w, Graham, KS

Start Date: 2014.10.29 @ 03:50:00

End Date: 2014.10.29 @ 12:01:00

Job Ticket #: 60946 DST #: 3

Trilobite Testing, Inc
1515 Commerce Parkway Hays, KS 67601
ph: 785-625-4778 fax: 785-625-5620

Printed: 2014.10.31 @ 14:48:25



TRILOBITE TESTING, INC

DRILL STEM TEST REPORT

Cobalt Energy LLC

31-7s-25w, Graham, KS

PO Box 8037
Wichita KS 67208

Davis-Heskett A 1-31

ATTN: Terry McLeod

Job Ticket: 60946

DST#: 3

Test Start: 2014.10.29 @ 03:50:00

GENERAL INFORMATION:

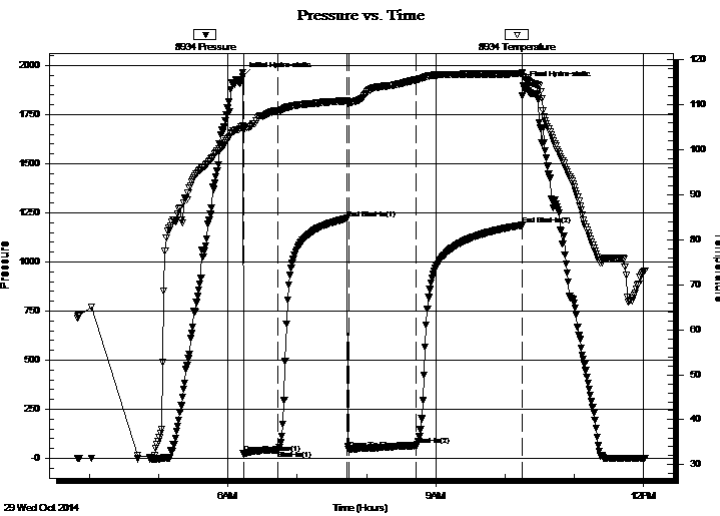
Formation: **KC**
 Deviated: No Whipstock: ft (KB)
 Time Tool Opened: 06:13:30
 Time Test Ended: 12:01:00
 Interval: **3873.00 ft (KB) To 3908.00 ft (KB) (TVD)**
 Total Depth: 3820.00 ft (KB) (TVD)
 Hole Diameter: 7.88 inches Hole Condition: Fair
 Test Type: Conventional Bottom Hole (Reset)
 Tester: Brett Dickinson
 Unit No: 59
 Reference Elevations: 2997.00 ft (KB)
 2992.00 ft (CF)
 KB to GR/CF: 5.00 ft

Serial #: 8934

Outside

Press@RunDepth: 65.07 psig @ 3883.00 ft (KB) Capacity: 8000.00 psig
 Start Date: 2014.10.29 End Date: 2014.10.29 Last Calib.: 2014.10.29
 Start Time: 03:50:05 End Time: 12:00:59 Time On Btm: 2014.10.29 @ 06:13:00
 Time Off Btm: 2014.10.29 @ 10:15:45

TEST COMMENT: IF-3 1/2" blow
 IS-No blow
 FF-3" blow
 FS-No blow



PRESSURE SUMMARY

| Time (Min.) | Pressure (psig) | Temp (deg F) | Annotation |
|-------------|-----------------|--------------|----------------------|
| 0 | 1944.61 | 105.27 | Initial Hydro-static |
| 1 | 23.81 | 104.29 | Open To Flow (1) |
| 31 | 43.08 | 108.65 | Shut-In(1) |
| 91 | 1221.33 | 110.83 | End Shut-In(1) |
| 92 | 45.77 | 110.48 | Open To Flow (2) |
| 151 | 65.07 | 115.54 | Shut-In(2) |
| 242 | 1186.97 | 116.84 | End Shut-In(2) |
| 243 | 1895.51 | 116.24 | Final Hydro-static |

Recovery

| Length (ft) | Description | Volume (bbl) |
|-------------|-----------------------|--------------|
| 60.00 | V SOWCM 2%O 25%W 73%M | 0.57 |
| 30.00 | SOCM 10%O 90%M | 0.42 |
| 15.00 | GO 10%G 90%O | 0.21 |
| 0.00 | 15ft GIP | 0.00 |
| | | |
| | | |

* Recovery from multiple tests

Gas Rates

| | Choke (inches) | Pressure (psig) | Gas Rate (Mcf/d) |
|--|----------------|-----------------|------------------|
| | | | |



**TRILOBITE
TESTING, INC**

DRILL STEM TEST REPORT

Cobalt Energy LLC

31-7s-25w, Graham, KS

PO Box 8037
Wichita KS 67208

Davis-Heskett A 1-31

ATTN: Terry McLeod

Job Ticket: 60946

DST#: 3

Test Start: 2014.10.29 @ 03:50:00

GENERAL INFORMATION:

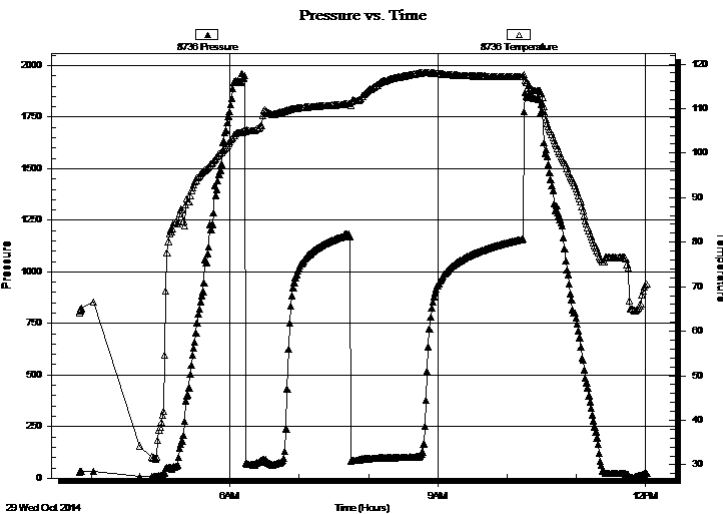
Formation: **KC**
 Deviated: No Whipstock: ft (KB)
 Test Type: Conventional Bottom Hole (Reset)
 Time Tool Opened: 06:13:30
 Tester: Brett Dickinson
 Time Test Ended: 12:01:00
 Unit No: 59
 Interval: **3873.00 ft (KB) To 3908.00 ft (KB) (TVD)**
 Reference Elevations: 2997.00 ft (KB)
 Total Depth: 3820.00 ft (KB) (TVD)
 2992.00 ft (CF)
 Hole Diameter: 7.88 inches
 Hole Condition: Fair
 KB to GR/CF: 5.00 ft

Serial #: 8736

Inside

Press@RunDepth: psig @ 3883.00 ft (KB) Capacity: 8000.00 psig
 Start Date: 2014.10.29 End Date: 2014.10.29 Last Calib.: 2014.10.29
 Start Time: 03:50:05 End Time: 12:01:14 Time On Btm:
 Time Off Btm:

TEST COMMENT: IF-3 1/2" blow
 IS-No blow
 FF-3" blow
 FS-No blow



PRESSURE SUMMARY

| Time (Min.) | Pressure (psig) | Temp (deg F) | Annotation |
|-------------|-----------------|--------------|------------|
| | | | |
| | | | |
| | | | |
| | | | |

Recovery

| Length (ft) | Description | Volume (bbl) |
|-------------|-----------------------|--------------|
| 60.00 | V SOWCM 2%O 25%W 73%M | 0.57 |
| 30.00 | SOCM 10%O 90%M | 0.42 |
| 15.00 | GO 10%G 90%O | 0.21 |
| 0.00 | 15ft GIP | 0.00 |
| | | |
| | | |

* Recovery from multiple tests

Gas Rates

| | Choke (inches) | Pressure (psig) | Gas Rate (Mcf/d) |
|--|----------------|-----------------|------------------|
| | | | |



**TRILOBITE
TESTING, INC**

DRILL STEM TEST REPORT

TOOL DIAGRAM

Cobalt Energy LLC

31-7s-25w, Graham, KS

PO Box 8037
Wichita KS 67208

Davis-Heskett A 1-31

ATTN: Terry McLeod

Job Ticket: 60946

DST#: 3

Test Start: 2014.10.29 @ 03:50:00

Tool Information

| | | | | | |
|---------------------------|--------------------|-----------------------|----------------------|------------------------|-------------|
| Drill Pipe: | Length: 3833.00 ft | Diameter: 3.80 inches | Volume: 53.77 bbl | Tool Weight: | 2000.00 lb |
| Heavy Wt. Pipe: | Length: ft | Diameter: 2.70 inches | Volume: - bbl | Weight set on Packer: | 25000.00 lb |
| Drill Collar: | Length: 30.00 ft | Diameter: 2.25 inches | Volume: 0.15 bbl | Weight to Pull Loose: | 60000.00 lb |
| | | | <u>Total Volume:</u> | Tool Chased | 0.00 ft |
| Drill Pipe Above KB: | 13.00 ft | | | String Weight: Initial | 52000.00 lb |
| Depth to Top Packer: | 3873.00 ft | | | Final | 52000.00 lb |
| Depth to Bottom Packer: | ft | | | | |
| Interval between Packers: | 35.00 ft | | | | |
| Tool Length: | 58.00 ft | | | | |
| Number of Packers: | 2 | Diameter: 6.75 inches | | | |

Tool Comments:

Tool Description

| Tool Description | Length (ft) | Serial No. | Position | Depth (ft) | Accum. Lengths |
|------------------|-------------|------------|----------|------------|-------------------------------|
| Shut In Tool | 5.00 | | | 3855.00 | |
| Hydraulic tool | 5.00 | | | 3860.00 | |
| Safety Joint | 3.00 | | | 3863.00 | |
| Packer | 5.00 | | | 3868.00 | 23.00 Bottom Of Top Packer |
| Packer | 5.00 | | | 3873.00 | |
| Stubb | 1.00 | | | 3874.00 | |
| Perforations | 9.00 | | | 3883.00 | |
| Recorder | 0.00 | 8736 | Inside | 3883.00 | |
| Recorder | 0.00 | 8934 | Outside | 3883.00 | |
| Perforations | 22.00 | | | 3905.00 | |
| Bullnose | 3.00 | | | 3908.00 | 35.00 Bottom Packers & Anchor |

Total Tool Length: 58.00



**TRILOBITE
TESTING, INC**

DRILL STEM TEST REPORT

FLUID SUMMARY

Cobalt Energy LLC

31-7s-25w, Graham, KS

PO Box 8037
Wichita KS 67208

Davis-Heskett A 1-31

Job Ticket: 60946

DST#: 3

ATTN: Terry McLeod

Test Start: 2014.10.29 @ 03:50:00

Mud and Cushion Information

Mud Type: Gel Chem
Mud Weight: 9.00 lb/gal
Viscosity: 49.00 sec/qt
Water Loss: 5.98 in³
Resistivity: ohm.m
Salinity: 900.00 ppm
Filter Cake: inches

Cushion Type:
Cushion Length: ft
Cushion Volume: bbl
Gas Cushion Type:
Gas Cushion Pressure: psig

Oil API: 32 deg API
Water Salinity: 60000 ppm

Recovery Information

Recovery Table

| Length ft | Description | Volume bbl |
|--------------|----------------------|---------------|
| 60.00 | VSOWCM 2%O 25%W 73%M | 0.568 |
| 30.00 | SOCM 10%O 90%M | 0.421 |
| 15.00 | GO 10%G 90%O | 0.210 |
| 0.00 | 15ft GIP | 0.000 |

Total Length: 105.00 ft Total Volume: 1.199 bbl

Num Fluid Samples: 0

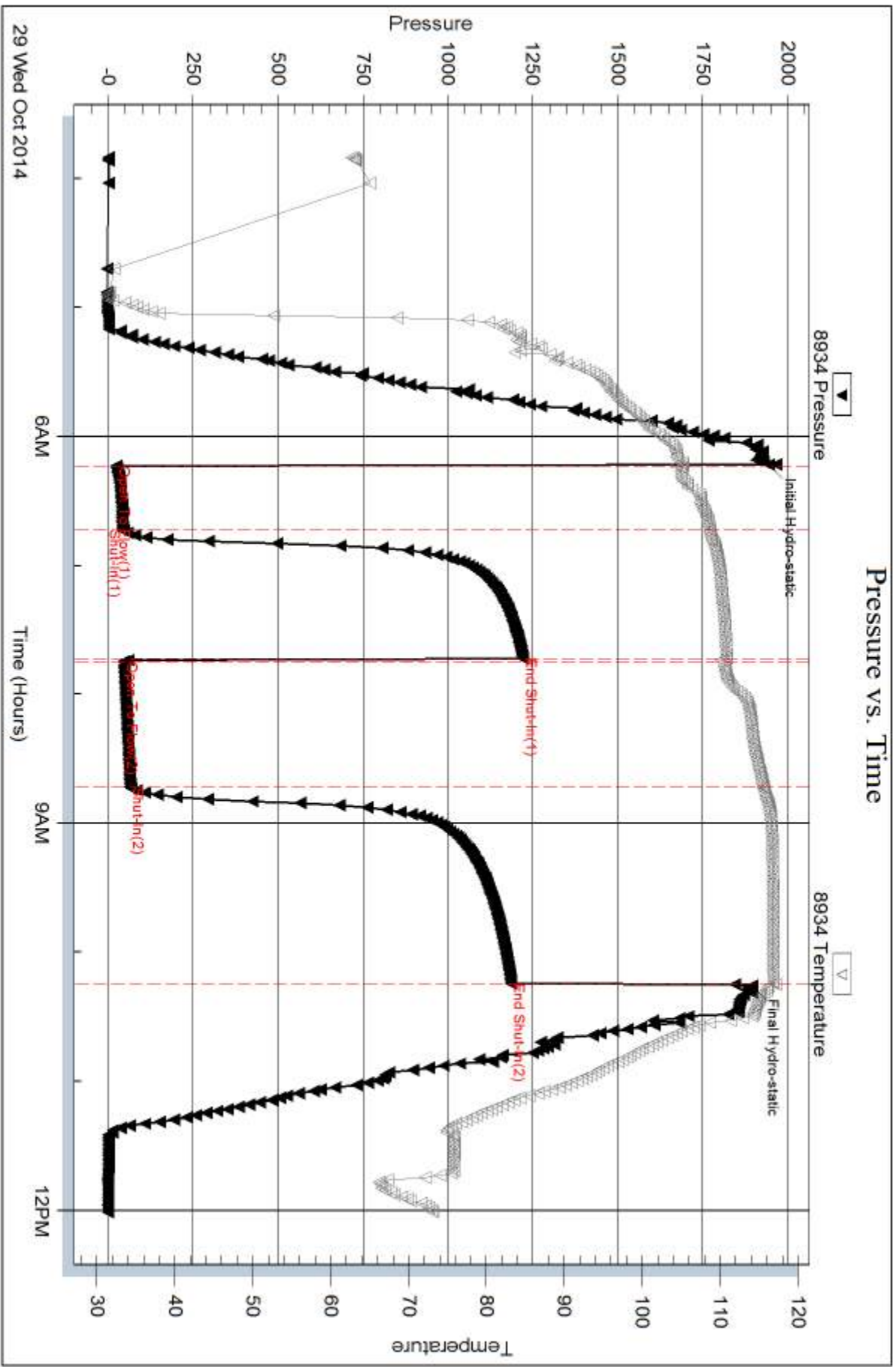
Num Gas Bombs: 0

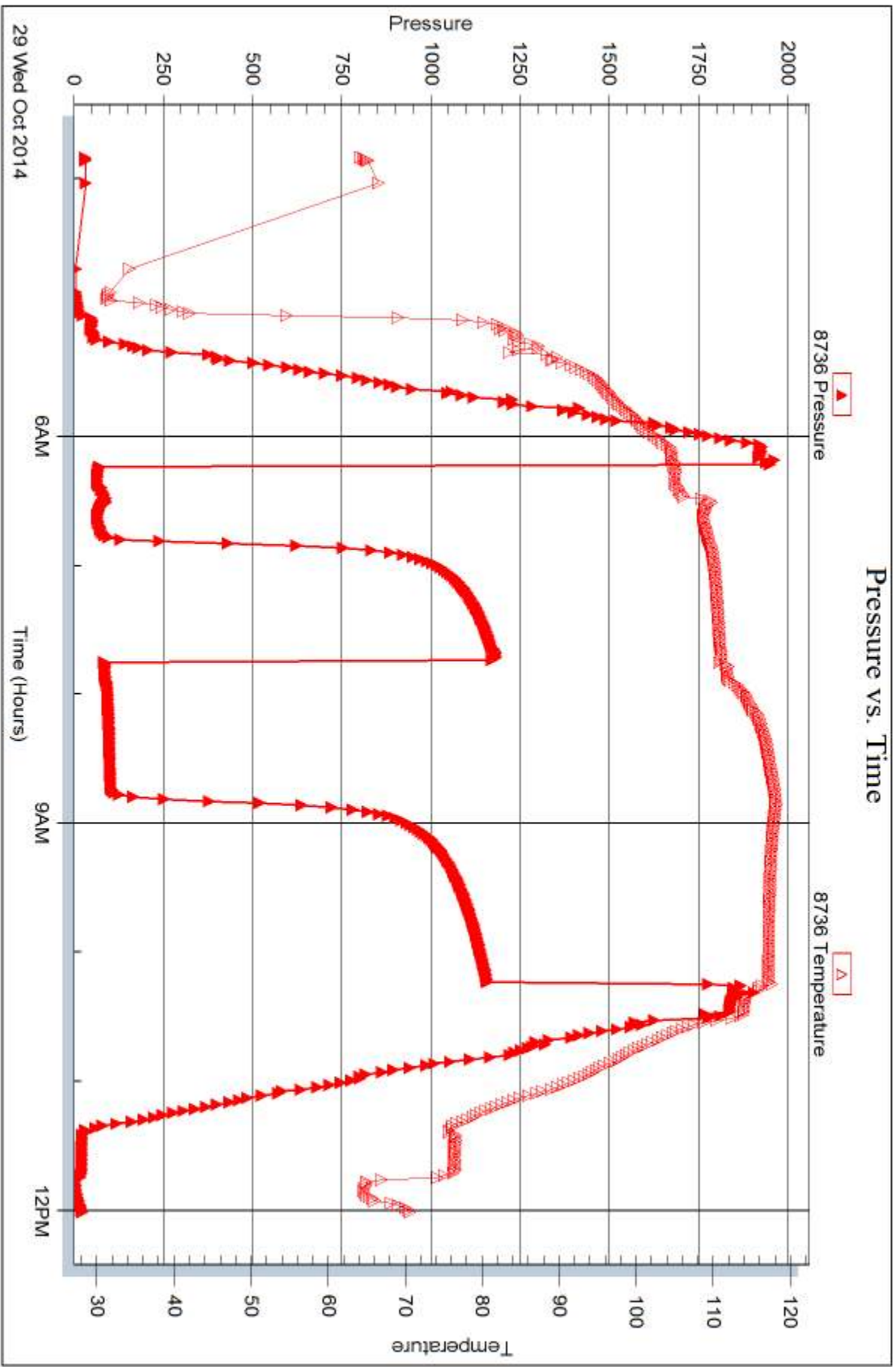
Serial #:

Laboratory Name:

Laboratory Location:

Recovery Comments:







DRILL STEM TEST REPORT

Prepared For: **Cobalt Energy LLC**

PO Box 8037
Wichita KS 67208

ATTN: Terry McLeod

Davis-Heskett A 1-31

31-7s-25w, Graham, KS

Start Date: 2014.10.29 @ 19:20:00

End Date: 2014.10.30 @ 00:24:15

Job Ticket #: 60947 DST #: 4

Trilobite Testing, Inc
1515 Commerce Parkway Hays, KS 67601
ph: 785-625-4778 fax: 785-625-5620

Printed: 2014.10.31 @ 14:47:56



**TRILOBITE
TESTING, INC**

DRILL STEM TEST REPORT

Cobalt Energy LLC

31-7s-25w, Graham, KS

PO Box 8037
Wichita KS 67208

Davis-Heskett A 1-31

ATTN: Terry McLeod

Job Ticket: 60947

DST#: 4

Test Start: 2014.10.29 @ 19:20:00

GENERAL INFORMATION:

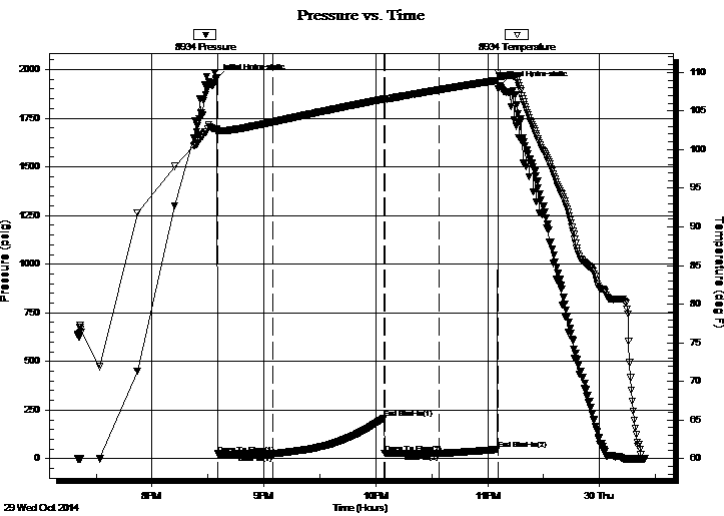
Formation: **KC**
 Deviated: No Whipstock: ft (KB)
 Time Tool Opened: 20:35:15
 Time Test Ended: 00:24:15
 Interval: **3904.00 ft (KB) To 3955.00 ft (KB) (TVD)**
 Total Depth: 3955.00 ft (KB) (TVD)
 Hole Diameter: 7.88 inches Hole Condition: Fair
 Test Type: Conventional Bottom Hole (Reset)
 Tester: Brett Dickinson
 Unit No: 59
 Reference Elevations: 2997.00 ft (KB)
 2992.00 ft (CF)
 KB to GR/CF: 5.00 ft

Serial #: 8934

Outside

Press@RunDepth: 27.71 psig @ 3918.00 ft (KB) Capacity: 8000.00 psig
 Start Date: 2014.10.29 End Date: 2014.10.30 Last Calib.: 2014.10.30
 Start Time: 19:20:05 End Time: 00:24:14 Time On Btm: 2014.10.29 @ 20:34:30
 Time Off Btm: 2014.10.29 @ 23:06:45

TEST COMMENT: IF-3/4" blow
 IS-No blow
 FF-No blow
 FS-No blow



PRESSURE SUMMARY

| Time (Min.) | Pressure (psig) | Temp (deg F) | Annotation |
|-------------|-----------------|--------------|----------------------|
| 0 | 1953.99 | 102.64 | Initial Hydro-static |
| 1 | 24.65 | 102.41 | Open To Flow (1) |
| 31 | 24.75 | 103.57 | Shut-In(1) |
| 90 | 208.31 | 106.54 | End Shut-In(1) |
| 91 | 27.88 | 106.48 | Open To Flow (2) |
| 120 | 27.71 | 107.73 | Shut-In(2) |
| 151 | 48.24 | 108.98 | End Shut-In(2) |
| 153 | 1915.42 | 109.51 | Final Hydro-static |

Recovery

| Length (ft) | Description | Volume (bbl) |
|-------------|-------------|--------------|
| 5.00 | Mud | 0.02 |
| | | |
| | | |
| | | |
| | | |

* Recovery from multiple tests

Gas Rates

| Choke (inches) | Pressure (psig) | Gas Rate (Mcf/d) |
|----------------|-----------------|------------------|
| | | |



TRILOBITE TESTING, INC

DRILL STEM TEST REPORT

Cobalt Energy LLC

31-7s-25w, Graham, KS

PO Box 8037
Wichita KS 67208

Davis-Heskett A 1-31

ATTN: Terry McLeod

Job Ticket: 60947

DST#: 4

Test Start: 2014.10.29 @ 19:20:00

GENERAL INFORMATION:

Formation: **KC**

Deviated: No Whipstock: ft (KB)

Time Tool Opened: 20:35:15

Time Test Ended: 00:24:15

Test Type: Conventional Bottom Hole (Reset)

Tester: Brett Dickinson

Unit No: 59

Interval: 3904.00 ft (KB) To 3955.00 ft (KB) (TVD)

Reference Elevations: 2997.00 ft (KB)

Total Depth: 3955.00 ft (KB) (TVD)

2992.00 ft (CF)

Hole Diameter: 7.88 inches Hole Condition: Fair

KB to GR/CF: 5.00 ft

Serial #: 8736 **Inside**

Press@RunDepth: psig @ 3918.00 ft (KB)

Capacity: 8000.00 psig

Start Date: 2014.10.29

End Date: 2014.10.30

Last Calib.: 2014.10.30

Start Time: 19:20:05

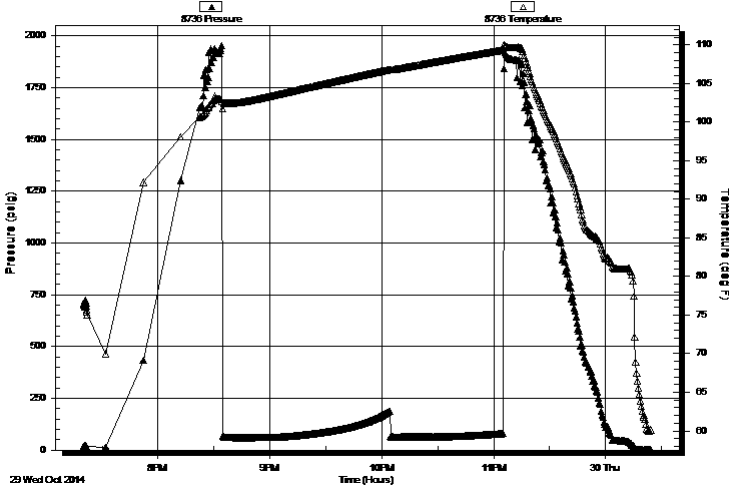
End Time: 00:24:14

Time On Btm:

Time Off Btm:

TEST COMMENT: IF-3/4" blow
IS-No blow
FF-No blow
FS-No blow

Pressure vs. Time



PRESSURE SUMMARY

| Time (Min.) | Pressure (psig) | Temp (deg F) | Annotation |
|-------------|-----------------|--------------|------------|
| | | | |
| | | | |
| | | | |
| | | | |
| | | | |
| | | | |
| | | | |
| | | | |
| | | | |
| | | | |
| | | | |
| | | | |
| | | | |
| | | | |
| | | | |
| | | | |
| | | | |
| | | | |
| | | | |
| | | | |
| | | | |
| | | | |

Recovery

| Length (ft) | Description | Volume (bbl) |
|-------------|-------------|--------------|
| 5.00 | Mud | 0.02 |
| | | |
| | | |
| | | |
| | | |
| | | |
| | | |

Gas Rates

| Choke (inches) | Pressure (psig) | Gas Rate (Mcf/d) |
|----------------|-----------------|------------------|
| | | |
| | | |
| | | |

* Recovery from multiple tests



**TRILOBITE
TESTING, INC.**

DRILL STEM TEST REPORT

TOOL DIAGRAM

Cobalt Energy LLC

31-7s-25w, Graham, KS

PO Box 8037
Wichita KS 67208

Davis-Heskett A 1-31

Job Ticket: 60947

DST#: 4

ATTN: Terry McLeod

Test Start: 2014.10.29 @ 19:20:00

Tool Information

| | | | | | |
|---------------------------|--------------------|-----------------------|----------------------|------------------------|-------------|
| Drill Pipe: | Length: 3868.00 ft | Diameter: 3.80 inches | Volume: 54.26 bbl | Tool Weight: | 2000.00 lb |
| Heavy Wt. Pipe: | Length: ft | Diameter: 2.70 inches | Volume: - bbl | Weight set on Packer: | 25000.00 lb |
| Drill Collar: | Length: 30.00 ft | Diameter: 2.25 inches | Volume: 0.15 bbl | Weight to Pull Loose: | 55000.00 lb |
| | | | <u>Total Volume:</u> | Tool Chased | 0.00 ft |
| Drill Pipe Above KB: | 17.00 ft | | | String Weight: Initial | 51000.00 lb |
| Depth to Top Packer: | 3904.00 ft | | | Final | 51000.00 lb |
| Depth to Bottom Packer: | ft | | | | |
| Interval between Packers: | 51.00 ft | | | | |
| Tool Length: | 74.00 ft | | | | |
| Number of Packers: | 2 | Diameter: 6.75 inches | | | |

Tool Comments:

Tool Description

| Tool Description | Length (ft) | Serial No. | Position | Depth (ft) | Accum. Lengths |
|------------------|-------------|------------|----------|------------|-------------------------------|
| Shut In Tool | 5.00 | | | 3886.00 | |
| Hydraulic tool | 5.00 | | | 3891.00 | |
| Safety Joint | 3.00 | | | 3894.00 | |
| Packer | 5.00 | | | 3899.00 | 23.00 Bottom Of Top Packer |
| Packer | 5.00 | | | 3904.00 | |
| Stubb | 1.00 | | | 3905.00 | |
| Perforations | 13.00 | | | 3918.00 | |
| Recorder | 0.00 | 8736 | Inside | 3918.00 | |
| Recorder | 0.00 | 8934 | Outside | 3918.00 | |
| Change Over Sub | 1.00 | | | 3919.00 | |
| Drill Pipe | 31.00 | | | 3950.00 | |
| Change Over Sub | 1.00 | | | 3951.00 | |
| Perforations | 1.00 | | | 3952.00 | |
| Bullnose | 3.00 | | | 3955.00 | 51.00 Bottom Packers & Anchor |

Total Tool Length: 74.00



**TRILOBITE
TESTING, INC**

DRILL STEM TEST REPORT

FLUID SUMMARY

Cobalt Energy LLC

31-7s-25w, Graham, KS

PO Box 8037
Wichita KS 67208

Davis-Heskett A 1-31

Job Ticket: 60947

DST#: 4

ATTN: Terry McLeod

Test Start: 2014.10.29 @ 19:20:00

Mud and Cushion Information

Mud Type: Gel Chem

Cushion Type:

Oil API:

deg API

Mud Weight: 9.00 lb/gal

Cushion Length:

ft

Water Salinity:

ppm

Viscosity: 49.00 sec/qt

Cushion Volume:

bbbl

Water Loss: 5.98 in³

Gas Cushion Type:

Resistivity: ohm.m

Gas Cushion Pressure:

psig

Salinity: 900.00 ppm

Filter Cake: inches

Recovery Information

Recovery Table

| Length ft | Description | Volume bbl |
|--------------|-------------|---------------|
| 5.00 | Mud | 0.025 |

Total Length: 5.00 ft Total Volume: 0.025 bbl

Num Fluid Samples: 0

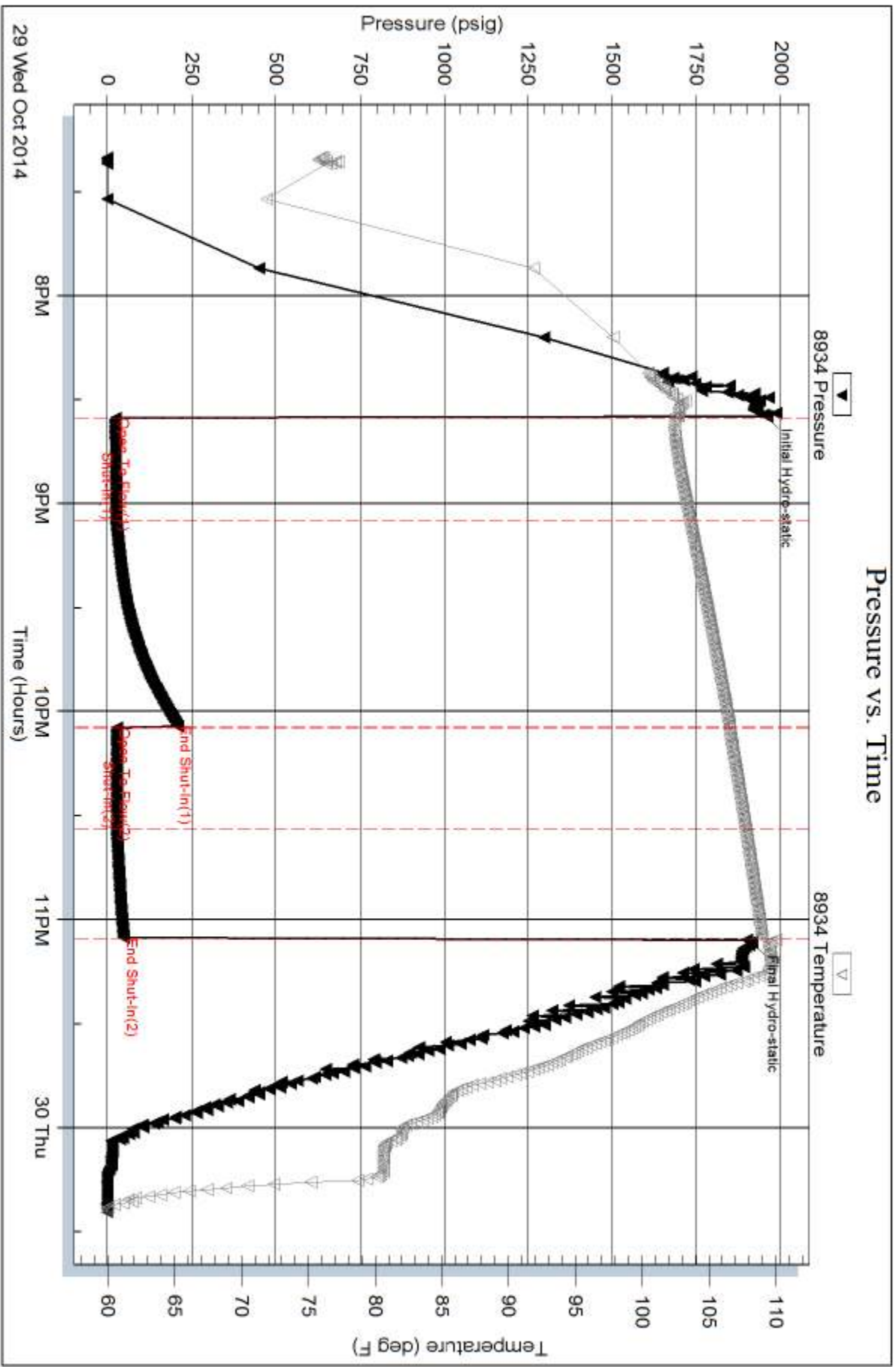
Num Gas Bombs: 0

Serial #:

Laboratory Name:

Laboratory Location:

Recovery Comments:



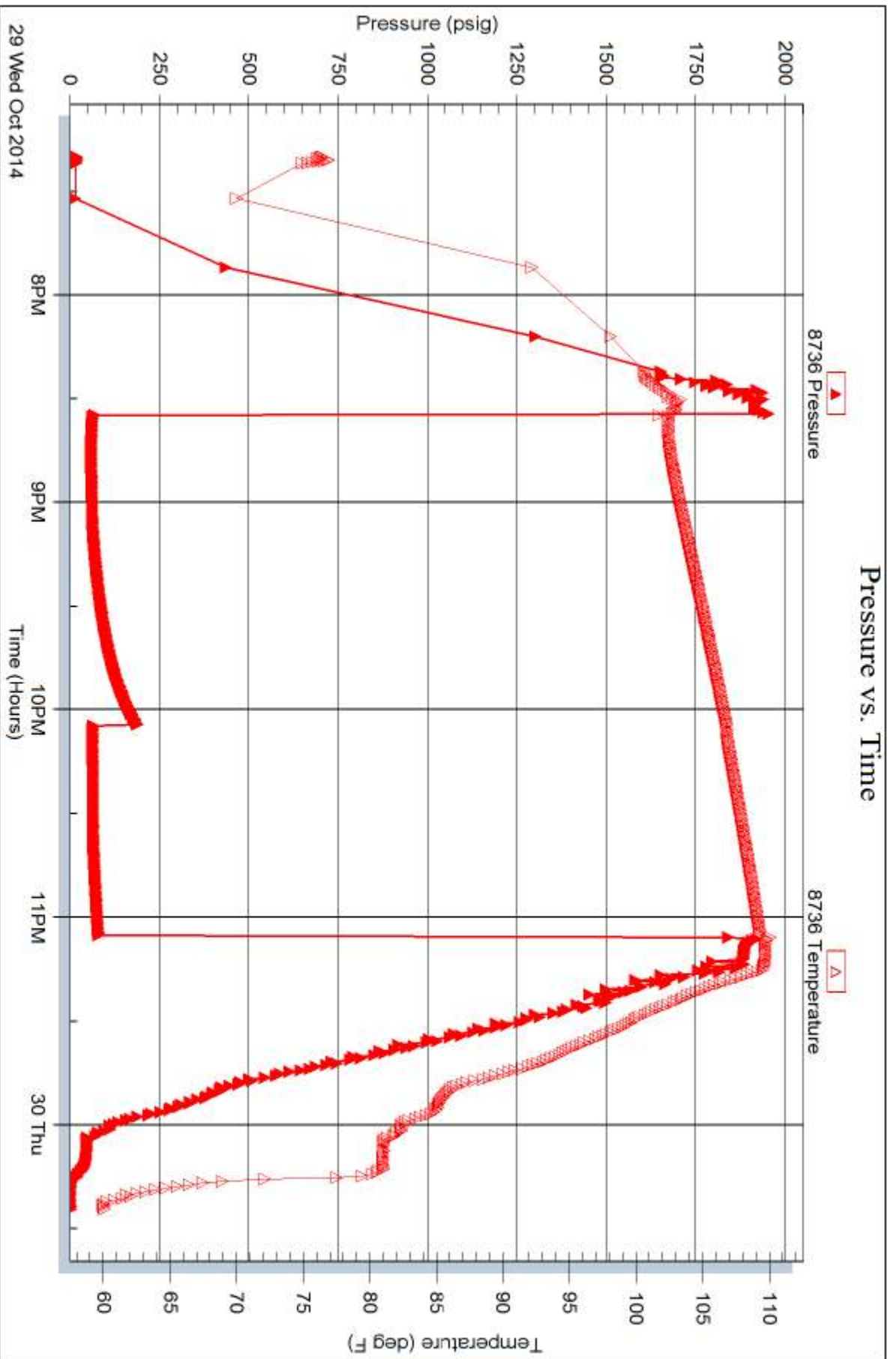
Serial #: 8736

Inside

Cobalt Energy LLC

Davis-Heskett A 1-31

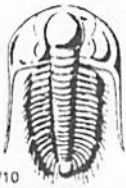
DST Test Number: 4



Tribble Testing, Inc

Ref. No: 60947

Printed: 2014, 10, 31 @ 14:47:57



TRILOBITE TESTING INC.

1515 Commerce Parkway • Hays, Kansas 67601

Test Ticket

NO. 60944

Well Name & No. Davis-Heskett Unit A Well #1-31 Test No. 1 Date 10/27/14
 Company Cobalt Energy LLC Elevation 2997 KB 2992 GL
 Address PO Box 8037 Wichita KS 67208
 Co. Rep / Geo. Terry McLeod Rig Martin #16
 Location: Sec. 31 Twp. 7s Rge. 25w Co. Graham State KS

Interval Tested 3741-3820 Zone Tested KC
 Anchor Length 79 Drill Pipe Run _____ Mud Wt. 8.8
 Top Packer Depth 3736 Drill Collars Run 30 Vis 49
 Bottom Packer Depth 3741 Wt. Pipe Run — WL 6.0
 Total Depth 3820 Chlorides 900 ppm System LCM 2#

Blow Description FF-2 1/2 in blow
ISI - No blow
FF - 2 in blow
FSL - No blow

| Rec | Feet of | %gas | %oil | %water | %mud |
|------------|---------------|------|------|--------|------|
| <u>140</u> | <u>Mud</u> | | | | |
| Rec _____ | Feet of _____ | %gas | %oil | %water | %mud |
| Rec _____ | Feet of _____ | %gas | %oil | %water | %mud |
| Rec _____ | Feet of _____ | %gas | %oil | %water | %mud |
| Rec _____ | Feet of _____ | %gas | %oil | %water | %mud |

Rec Total 140 BHT 114 Gravity _____ API RW _____ @ _____ °F Chlorides _____ ppm

(A) Initial Hydrostatic 1,869 Test 1150 T-On Location 23:45
 (B) First Initial Flow 40 Jars _____ T-Started 00:20
 (C) First Final Flow 57 Safety Joint 75 T-Open 3:30
 (D) Initial Shut-In 1,213 Circ Sub _____ T-Pulled 7:30
 (E) Second Initial Flow 60 Hourly Standby _____ T-Out 8:57
 (F) Second Final Flow 88 Mileage 157rt 243.35 Comments _____
 (G) Final Shut-In 1,194 Sampler _____
 (H) Final Hydrostatic 1,838 Straddle _____

Initial Open 30 Ruined Shale Packer _____
 Initial Shut-In 60 Ruined Packer _____
 Final Flow 60 Extra Packer _____
 Final Shut-In 90 Extra Recorder _____
 Day Standby _____ Sub Total 0
 Accessibility _____ Total 1468.35
 Sub Total 1468.35 MP/DST Disc't _____

Approved By _____ Our Representative Burt D... ..

Trilobite Testing Inc. shall not be liable for damaged of any kind of the property or personnel of the one for whom a test is made, or for any loss suffered or sustained, directly or indirectly, through the use of its equipment, or its statements or opinion concerning the results of any test, tools lost or damaged in the hole shall be paid for at cost by the party for whom the test is made.



TRILOBITE TESTING INC.

1515 Commerce Parkway • Hays, Kansas 67601

Test Ticket

NO. 60945

4/10

Well Name & No. Davis-Hegkett Unit A #1-31 Test No. 2 Date 10/28/14
 Company Cobalt Energy LLC Elevation 2997 KB 2992 GL
 Address _____
 Co. Rep / Geo. Terry Mclead Rig Murfin #16
 Location: Sec. 31 Twp. 7s Rge. 25w Co. Graham State KS

Interval Tested 3840-3880 Zone Tested KC "H"
 Anchor Length 40 Drill Pipe Run _____ Mud Wt. 8.8
 Top Packer Depth 3835 Drill Collars Run 30 Vis 49
 Bottom Packer Depth 3840 Wt. Pipe Run - WL 6.0
 Total Depth 3880 Chlorides 900 ppm System LCM 2#
 Blow Description IF - 1/2 in blow died back to 1/4 in
ISI - No blow
FF - Very weak surface blow died in 45 min
FSI - No blow

| Rec | Feet of | %gas | %oil | %water | %mud |
|-----------|---------------|------------|------------|--------------|------------|
| <u>50</u> | <u>VSOCAL</u> | <u>5</u> | | <u>95</u> | |
| Rec _____ | Feet of _____ | %gas _____ | %oil _____ | %water _____ | %mud _____ |
| Rec _____ | Feet of _____ | %gas _____ | %oil _____ | %water _____ | %mud _____ |
| Rec _____ | Feet of _____ | %gas _____ | %oil _____ | %water _____ | %mud _____ |
| Rec _____ | Feet of _____ | %gas _____ | %oil _____ | %water _____ | %mud _____ |

Rec Total 50 BHT _____ Gravity _____ API RW _____ @ _____ °F Chlorides _____ ppm

| | | |
|--------------------------------------|--|--|
| (A) Initial Hydrostatic <u>1,922</u> | <input checked="" type="checkbox"/> Test <u>1150</u> | T-On Location <u>15:45</u> |
| (B) First Initial Flow <u>23</u> | <input type="checkbox"/> Jars _____ | T-Started <u>15:57</u> |
| (C) First Final Flow <u>30</u> | <input checked="" type="checkbox"/> Safety Joint <u>75</u> | T-Open <u>17:35</u> |
| (D) Initial Shut-In <u>1,196</u> | <input type="checkbox"/> Circ Sub _____ | T-Pulled <u>21:35</u> |
| (E) Second Initial Flow <u>35</u> | <input type="checkbox"/> Hourly Standby _____ | T-Out <u>22:45</u> |
| (F) Second Final Flow <u>38</u> | <input checked="" type="checkbox"/> Mileage <u>157.7</u> <u>243.35</u> | Comments _____ |
| (G) Final Shut-In <u>1,169</u> | <input type="checkbox"/> Sampler _____ | |
| (H) Final Hydrostatic <u>1,898</u> | <input type="checkbox"/> Straddle _____ | <input type="checkbox"/> Ruined Shale Packer _____ |
| Initial Open <u>30</u> | <input type="checkbox"/> Shale Packer _____ | <input type="checkbox"/> Ruined Packer _____ |
| Initial Shut-In <u>60</u> | <input type="checkbox"/> Extra Packer _____ | <input type="checkbox"/> Extra Copies _____ |
| Final Flow <u>60</u> | <input type="checkbox"/> Extra Recorder _____ | Sub Total <u>0</u> |
| Final Shut-In <u>90</u> | <input type="checkbox"/> Day Standby _____ | Total <u>1468.35</u> |
| | <input type="checkbox"/> Accessibility _____ | MP/DST Disc't _____ |
| | Sub Total <u>1468.35</u> | |

Approved By _____ Our Representative Beth Dickinson
 TriLOBITE TESTING INC. shall not be liable for damaged of any kind of the property or personnel of the one for whom a test is made, or for any loss suffered or sustained, directly or indirectly, through the use of its equipment, or its statements or opinion concerning the results of any test, tools lost or damaged in the hole shall be paid for at cost by the party for whom the test is made.



TRILOBITE TESTING INC.

1515 Commerce Parkway • Hays, Kansas 67601

Test Ticket

NO. 60946

4/10

Well Name & No. Davis - Heskett Unit A #1-31 Test No. 3 Date 10/29/14
 Company Cobalt Energy LLC Elevation 2997 KB 2992 GL
 Address _____
 Co. Rep / Geo. Terry McLeod Rig Murfin #16
 Location: Sec. 31 Twp. 7s Rge. 25w Co. Graham State KS

Interval Tested 3873 - 3908 Zone Tested AC
 Anchor Length 35 Drill Pipe Run _____ Mud Wt. 8.8
 Top Packer Depth 3868 Drill Collars Run 30 Vis 49
 Bottom Packer Depth 3873 Wt. Pipe Run - WL 6.0
 Total Depth 3908 Chlorides 900 ppm System LCM 2#
 Blow Description IF - 3 1/2 in blow
ISI - No blow
FF - 3 in blow
FSI - No blow

| Rec | Feet of | %gas | %oil | %water | %mud |
|-----------|----------------|-----------|-----------|-----------|-----------|
| <u>15</u> | <u>60</u> | <u>10</u> | <u>90</u> | | |
| <u>30</u> | <u>50cm</u> | | <u>10</u> | | <u>90</u> |
| <u>60</u> | <u>4504cm</u> | | <u>2</u> | <u>25</u> | <u>73</u> |
| ____ | <u>15# GIP</u> | | | | |
| ____ | ____ | | | | |

Rec Total 105 BHT _____ Gravity 32 API RW 15 @ 60 ° F Chlorides 60000 ppm
 (A) Initial Hydrostatic 1945 Test 1150 T-On Location 3:00
 (B) First Initial Flow 24 Jars _____ T-Started 3:50
 (C) First Final Flow 43 Safety Joint 75 T-Open 6:12
 (D) Initial Shut-In 1,221 Circ Sub _____ T-Pulled 10:12
 (E) Second Initial Flow 46 Hourly Standby _____ T-Out 12:00
 (F) Second Final Flow 65 Mileage 157.1 243.35 Comments _____
 (G) Final Shut-In 1,187 Sampler _____
 (H) Final Hydrostatic 1,896 Straddle _____
 Shale Packer _____
 Extra Packer _____
 Extra Recorder _____
 Day Standby _____
 Accessibility _____
 Sub Total 1468.35

Initial Open 30
 Initial Shut-In 60
 Final Flow 60
 Final Shut-In 90

Sub Total 1468.35
 Total _____
 MP/DST Disc't _____

Approved By _____ Our Representative Butt Deems

Trilobite Testing Inc. shall not be liable for damaged of any kind of the property or personnel of the one for whom a test is made, or for any loss suffered or sustained, directly or indirectly, through the use of its equipment, or its statements or opinion concerning the results of any test, tools lost or damaged in the hole shall be paid for at cost by the party for whom the test is made.



TRILOBITE TESTING INC.

1515 Commerce Parkway • Hays, Kansas 67601

Test Ticket

NO. 60947

4/10

Well Name & No. Paris-Heskett #1-31 Test No. 4 Date 10/29/14
 Company Cobalt Energy LLC Elevation 2997 KB 2992 GL
 Address _____
 Co. Rep / Geo. _____ Rig Martin #16
 Location: Sec. 31 Twp. 7s Rge. 25w Co. Graham State KS

Interval Tested 3904-3955 Zone Tested AC
 Anchor Length 51 Drill Pipe Run _____ Mud Wt. _____
 Top Packer Depth 3899 Drill Collars Run 30 Vis _____
 Bottom Packer Depth 3904 Wt. Pipe Run - WL _____
 Total Depth 3955 Chlorides _____ ppm System LCM _____
 Blow Description IF - 3/4 in blow
ISI - No blow
FF - No blow
FST - No blow

| Rec | Feet of | %gas | %oil | %water | %mud |
|----------|------------|------|------|--------|------|
| <u>5</u> | <u>Mud</u> | | | | |
| Rec | Feet of | %gas | %oil | %water | %mud |
| Rec | Feet of | %gas | %oil | %water | %mud |
| Rec | Feet of | %gas | %oil | %water | %mud |
| Rec | Feet of | %gas | %oil | %water | %mud |

Rec Total 5 BHT _____ Gravity _____ API RW _____ @ _____ °F Chlorides _____ ppm

| | | |
|--------------------------------------|---|--|
| (A) Initial Hydrostatic <u>1,954</u> | <input checked="" type="checkbox"/> Test <u>1150</u> | T-On Location <u>19:10</u> |
| (B) First Initial Flow <u>25</u> | <input type="checkbox"/> Jars _____ | T-Started <u>19:30 20</u> |
| (C) First Final Flow <u>25</u> | <input checked="" type="checkbox"/> Safety Joint <u>75</u> | T-Open <u>20:42</u> |
| (D) Initial Shut-In <u>208</u> | <input type="checkbox"/> Circ Sub _____ | T-Pulled <u>23:12</u> |
| (E) Second Initial Flow <u>28</u> | <input type="checkbox"/> Hourly Standby _____ | T-Out <u>00:30</u> |
| (F) Second Final Flow <u>28</u> | <input checked="" type="checkbox"/> Mileage <u>157.1</u> 243.35 | Comments _____ |
| (G) Final Shut-In <u>48</u> | <input type="checkbox"/> Sampler _____ | |
| (H) Final Hydrostatic <u>1,915</u> | <input type="checkbox"/> Straddle _____ | <input type="checkbox"/> Ruined Shale Packer _____ |
| Initial Open <u>30</u> | <input type="checkbox"/> Shale Packer _____ | <input type="checkbox"/> Ruined Packer _____ |
| Initial Shut-In <u>60</u> | <input type="checkbox"/> Extra Packer _____ | <input type="checkbox"/> Extra Copies _____ |
| Final Flow <u>30</u> | <input type="checkbox"/> Extra Recorder _____ | Sub Total <u>0</u> |
| Final Shut-In <u>30</u> | <input type="checkbox"/> Day Standby _____ | Total <u>1468.35</u> |
| | <input type="checkbox"/> Accessibility _____ | MP/DST Disc't _____ |
| | Sub Total <u>1468.35</u> | |

Approved By _____ Our Representative Bruce D. ...

Trilobite Testing Inc. shall not be liable for damaged of any kind of the property or personnel of the one for whom a test is made, or for any loss suffered or sustained, directly or indirectly, through the use of its equipment, or its statements or opinion concerning the results of any test, tools lost or damaged in the hole shall be paid for at cost by the party for whom the test is made.