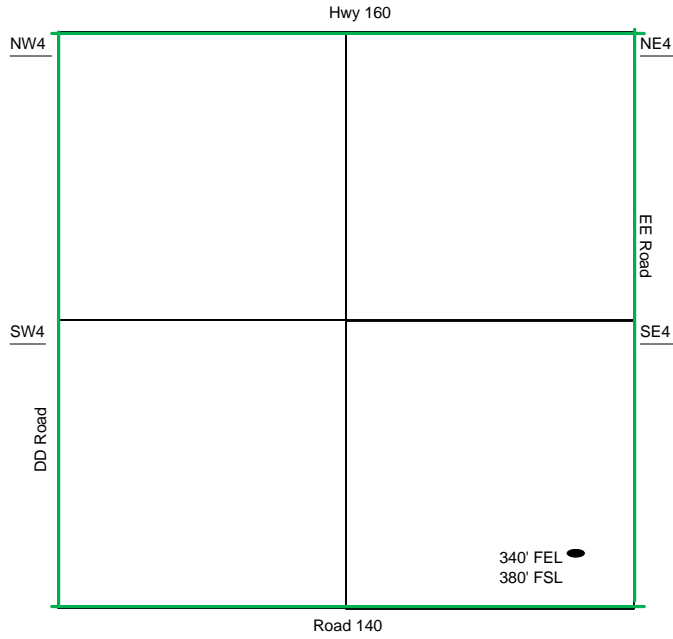
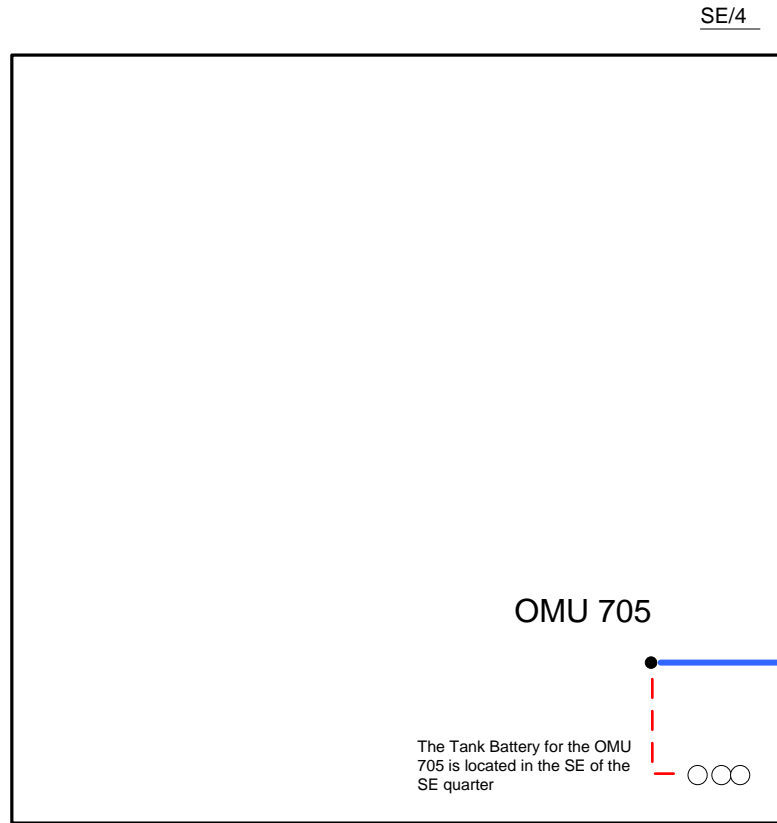


Proposed Plan of Construction  
 OMU 705  
 Sec 3 T29S-R34W  
 Haskell County, KS



Sec 3 – T29S – R34W



Proposed Details of  
 SE/4 Sec 3 – T29S – R34W

Proposed Site Diagram  
 OMU 705  
 Novembre 24, 2014

Note-Drawing **Not** to Scale