



P. O. Box 466
 Ness City, KS 67560
 Off: 785-798-2300



Invoice

| | |
|-----------|-----------|
| DATE | INVOICE # |
| 10/6/2014 | 26812 |

| |
|---|
| BILL TO |
| Carmen Schmitt, Inc. P. O. Box 47 915 Harrison Great Bend, KS 67530-0047 |

- Acidizing
- Cement
- Tool Rental

| TERMS | Well No. | Lease | County | Contractor | Well Type | Well Category | Job Purpose | Operator |
|------------|--|-------|--------|------------------|-----------|---------------|---------------------|-----------|
| Net 30 | #302 | Dorr | Rooks | Shields Drilling | Oil | Development | LongString - Top... | Nick |
| PRICE REF. | DESCRIPTION | | | | QTY | UM | UNIT PRICE | AMOUNT |
| 575D | Mileage - 1 Way | | | | 30 | Miles | 6.00 | 180.00 |
| 579D | Pump Charge - Top To Bottom LongString - 3500 Feet | | | | 1 | Job | 2,000.00 | 2,000.00 |
| 221 | Liquid KCL (Clayfix) | | | | 6 | Gallon(s) | 25.00 | 150.00T |
| 281 | Mud Flush | | | | 500 | Gallon(s) | 1.25 | 625.00T |
| 290 | D-Air | | | | 5 | Gallon(s) | 42.00 | 210.00T |
| 402-5 | 5 1/2" Centralizer | | | | 12 | Each | 70.00 | 840.00T |
| 403-5 | 5 1/2" Cement Basket | | | | 6 | Each | 300.00 | 1,800.00T |
| 406-5 | 5 1/2" Latch Down Plug & Baffle | | | | 1 | Each | 275.00 | 275.00T |
| 407-5 | 5 1/2" Insert Float Shoe With Auto Fill | | | | 1 | Each | 375.00 | 375.00T |
| 419-5 | 5 1/2" Rotating Head Rental | | | | 1 | Each | 200.00 | 200.00T |
| 330 | Swift Multi-Density Standard (MIDCON II) | | | | 470 | Sacks | 18.50 | 8,695.00T |
| 276 | Flocele | | | | 125 | Lb(s) | 2.50 | 312.50T |
| 581D | Service Charge Cement | | | | 470 | Sacks | 2.00 | 940.00 |
| 583D | Drayage | | | | 1,378.5 | Ton Miles | 1.00 | 1,378.50 |
| | Subtotal | | | | | | | 17,981.00 |
| | Sales Tax Rooks County | | | | | | 6.15% | 829.17 |

12420.0302
 7/10/43
 Well file

| | | |
|-------------------------------------|--------------|-------------|
| We Appreciate Your Business! | Total | \$18,810.17 |
|-------------------------------------|--------------|-------------|



CHARGE TO: *Carmen Schmitt*
 ADDRESS:
 CITY, STATE, ZIP CODE:

TICKET 26812

PAGE 1 OF 2

SERVICE LOCATIONS:
 1. *Hays, Ks.*
 2. *Ness City, Ks.*
 3.
 4.

WELL/PROJECT NO. # *302*
 LEASE *Dorr*
 COUNTY/PARISH *Reeds*
 STATE *Ks*
 CITY
 DATE *10-6-14*
 OWNER *same*

TICKET TYPE SERVICE SALES
 CONTRACTOR *Shields Drlg*
 RIG NAME/NO.
 SHIPPED VIA *7 location*
 ORDER NO.

WELL TYPE *oil*
 WELL CATEGORY *Development*
 JOB PURPOSE *Longstring Tepto Btm*
 WELL PERMIT NO.
 WELL LOCATION

REFERRAL LOCATION
 INVOICE INSTRUCTIONS

| PRICE REFERENCE | SECONDARY REFERENCE/ PART NUMBER | ACCOUNTING | | | DESCRIPTION | QTY. | | UM | | UNIT PRICE | AMOUNT |
|-----------------|-------------------------------------|------------|------|----|---------------------------------|------------|-----------|---------------|--|--------------------------|--------------------------|
| | | LOC | ACCT | DF | | | | | | | |
| <i>575</i> | | <i>1</i> | | | <i>MILEAGE #111</i> | <i>30</i> | | <i>mi</i> | | <i>6⁰⁰</i> | <i>180⁰⁰</i> |
| <i>579</i> | | <i>1</i> | | | <i>Tepto Bottom</i> | <i>1</i> | <i>ea</i> | <i>3500'</i> | | <i>2000⁰⁰</i> | <i>2000⁰⁰</i> |
| <i>821</i> | | <i>1</i> | | | <i>KCL</i> | <i>6</i> | | <i>gal</i> | | <i>25⁰⁰</i> | <i>150⁰⁰</i> |
| <i>281</i> | | <i>1</i> | | | <i>MudPlush</i> | <i>500</i> | | <i>gal</i> | | <i>1²⁵</i> | <i>625⁰⁰</i> |
| <i>290</i> | | <i>1</i> | | | <i>D-Air</i> | <i>5</i> | | <i>gal</i> | | <i>42</i> | <i>210⁰⁰</i> |
| <i>402</i> | | <i>1</i> | | | <i>Centralizers</i> | <i>12</i> | <i>ea</i> | <i>5 1/2"</i> | | <i>70⁰⁰</i> | <i>840⁰⁰</i> |
| <i>403</i> | | <i>1</i> | | | <i>Baskets</i> | <i>6</i> | <i>ea</i> | | | <i>300⁰⁰</i> | <i>1800⁰⁰</i> |
| <i>406</i> | | <i>1</i> | | | <i>L D Plug & Bore</i> | <i>1</i> | <i>ea</i> | | | <i>275⁰⁰</i> | <i>275⁰⁰</i> |
| <i>407</i> | | <i>1</i> | | | <i>Insert Float Shoe w/fill</i> | <i>1</i> | <i>ea</i> | | | <i>375⁰⁰</i> | <i>375⁰⁰</i> |
| <i>419</i> | | <i>1</i> | | | <i>Rotating Head</i> | <i>1</i> | <i>ea</i> | | | <i>200⁰⁰</i> | <i>200⁰⁰</i> |

LEGAL TERMS: Customer hereby acknowledges and agrees to the terms and conditions on the reverse side hereof which include, but are not limited to, PAYMENT, RELEASE, INDEMNITY, and LIMITED WARRANTY provisions.

MUST BE SIGNED BY CUSTOMER OR CUSTOMER'S AGENT PRIOR TO START OF WORK OR DELIVERY OF GOODS

x *Curtis J. Hirschman*
 DATE SIGNED *10-6-14* TIME SIGNED *2015* A.M. P.M.

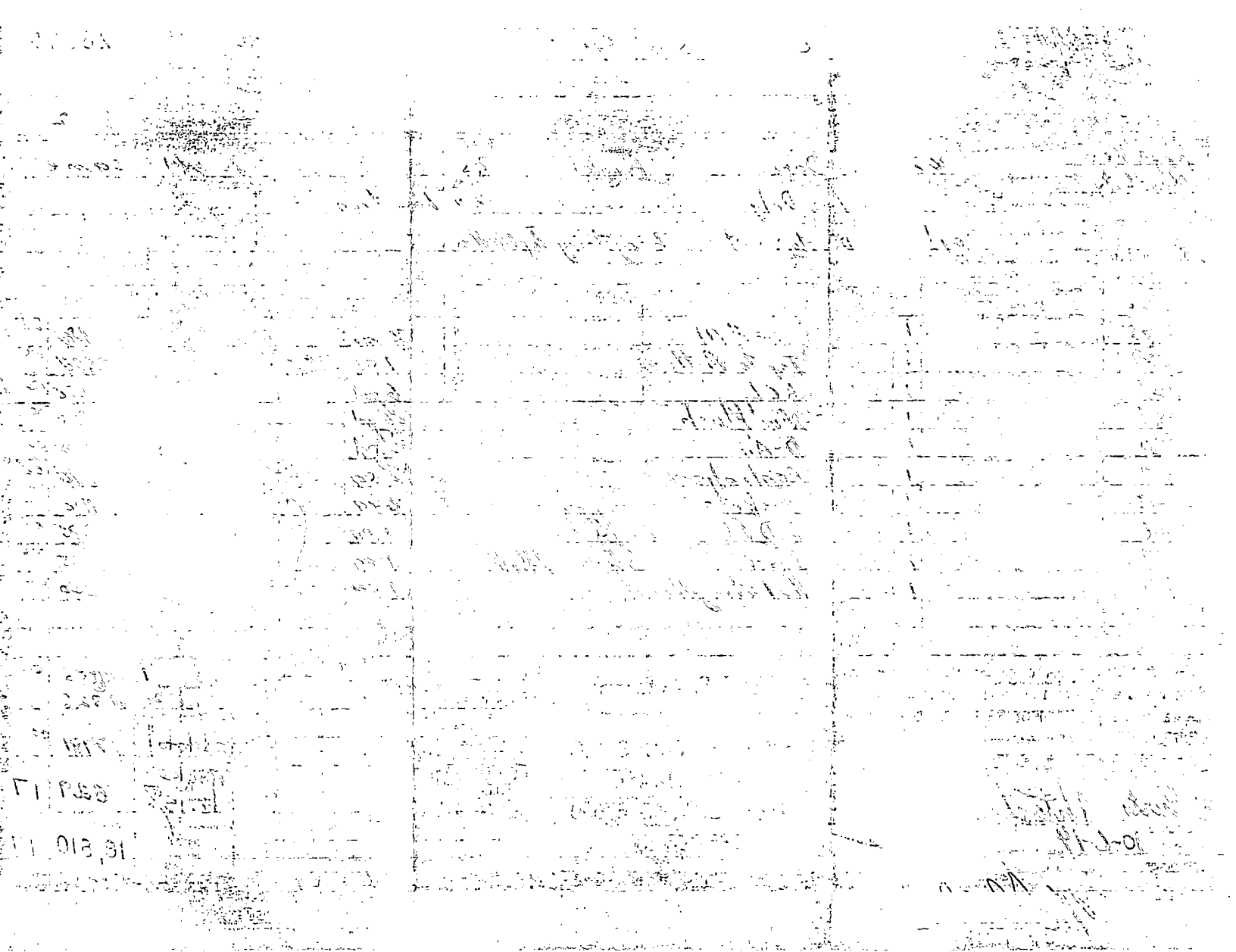
REMIT PAYMENT TO:
 SWIFT SERVICES, INC.
 P.O. BOX 466
 NESS CITY, KS 67560
 785-798-2300

| SURVEY | AGREE | UN-DECIDED | DIS-AGREE | | AMOUNT |
|---|-------|------------|-----------|---------------------|----------------------------|
| OUR EQUIPMENT PERFORMED WITHOUT BREAKDOWN? | | | | PAGE TOTAL 1 | <i>6855⁰⁰</i> |
| WE UNDERSTOOD AND MET YOUR NEEDS? | | | | page 2 | <i>11326</i> |
| OUR SERVICE WAS PERFORMED WITHOUT DELAY? | | | | subtotal | <i>17981⁰⁰</i> |
| WE OPERATED THE EQUIPMENT AND PERFORMED JOB CALCULATIONS SATISFACTORILY? | | | | Rook KS TAX @ 6.15% | <i>829¹⁷</i> |
| ARE YOU SATISFIED WITH OUR SERVICE? <input type="checkbox"/> YES <input type="checkbox"/> NO | | | | TOTAL | <i>18,810¹⁷</i> |

CUSTOMER ACCEPTANCE OF MATERIALS AND SERVICES The customer hereby acknowledges receipt of the materials and services listed on this ticket.

SWIFT OPERATOR *M. K. [Signature]* APPROVAL

Thank You!



11 013 31

11 013 31

11 013 31

11 013 31



PO Box 466
Ness City, KS 67560
Off: 785-798-2300

TICKET CONTINUATION

TICKET No. 26812

CUSTOMER *Carmen Schmitt* WELL # *302 Derr* DATE *10-6-14* PAGE *2* OF *2*

| PRICE REFERENCE | SECONDARY REFERENCE/ PART NUMBER | ACCOUNTING | | | TIME | DESCRIPTION | QTY. | | U/M | | UNIT PRICE | AMOUNT |
|-----------------|-------------------------------------|------------|------|----|------|----------------|-----------------------|--------------------|------|--------|------------|---------|
| | | LOC | ACCT | DF | | | QTY. | U/M | QTY. | U/M | | |
| 330 | | 2 | | | | SMD Cement | 470 | skts | | | 18.50 | 8695.00 |
| 276 | | 2 | | | | Floccels | 125 | # | 1/4 | 1/skts | 2.50 | 312.50 |
| 581 | | 2 | | | | SERVICE CHARGE | | | | | 2.00 | 940.00 |
| 583 | | 2 | | | | MILEAGE CHARGE | TOTAL WEIGHT 45947 | LOADED MILES 60 | | | 1.00 | 1378.50 |

CONTINUATION TOTAL 11326.00

JOB LOG

SWIFT Services, Inc.

DATE 10-6-14 PAGE NO.

CUSTOMER Carmen Schmitt WELL NO. # 302 LEASE Dorr JOB TYPE Top to Bottom TICKET NO. 26812

| CHART NO. | TIME | RATE (BPM) | VOLUME (BBL) (GAL) | PUMPS | | PRESSURE (PSI) | | DESCRIPTION OF OPERATION AND MATERIALS |
|-----------|------|------------|--------------------|-------|---|----------------|--------|--|
| | | | | T | C | TUBING | CASING | |
| | 1545 | | | | | | | on loc w/FE |
| | | | | | | | | RTD 3500' |
| | | | | | | | | 5 1/2" x 15.5" x 3498' x 16' |
| | | | | | | | | Centi. 5, 7, 9, 11, 13, 15, 17, 19, 21, 23, 54, 56 |
| | | | | | | | | Base. 3, 9, 13, 17, 54, 61 |
| | 1615 | | | | | | | Start FE |
| | 1745 | | | | | | | Break Circ |
| | 1845 | | 7/4 | | | | | Plug RHYMH 30/15 sks SMD |
| | 1855 | 5 | 0 | | | 200 | | Start 500gal Mud Flush |
| | 1857 | 5 | 12/0 | | | 200 | | Start 20 bbl KCL Flush |
| | 1901 | 5 | 20/0 | | | 200 | | Start 275 sks SMD @ 11.2 # |
| | 1931 | 5 | 152/0 | | | 200 | | 75 sks SMD @ 12.5 # |
| | 1937 | 5 | 28/0 | | | 200 | | 100 sks SMD @ 13.5-14.5 # |
| | 1945 | | 28 | | | | | End Cement Wash P+L |
| | | | | | | | | Drop L.D. Plug |
| | 1950 | 6 | 0 | | | 200 | | Start Displacement |
| | 1957 | 5 | 45 | | | 400 | | Circ Cement |
| | 2005 | | 83 | | | 950/500 | | Land Plug Release Pressure Float Held |
| | | | | | | | | circ 50 sks to pit |
| | | | | | | | | Thank you |
| | | | | | | | | Nick, David F., Austin, & Jared |