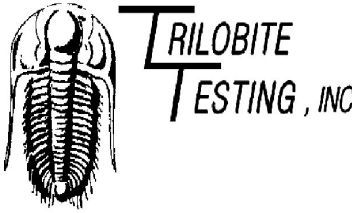


10

Shonyo 1 X Shonyo 1
Hoelscher 1-10

Image Header 03

	DRILL STEM TEST REPORT	
	American Warrior 3118 Cummings Rd Garden City Kansas 67846 ATTN: Wyatt	10-18s-10w Rice Hoelscher 1-10 Job Ticket: 60315 DST#: 1 Test Start: 2014.09.09 @ 03:05:00

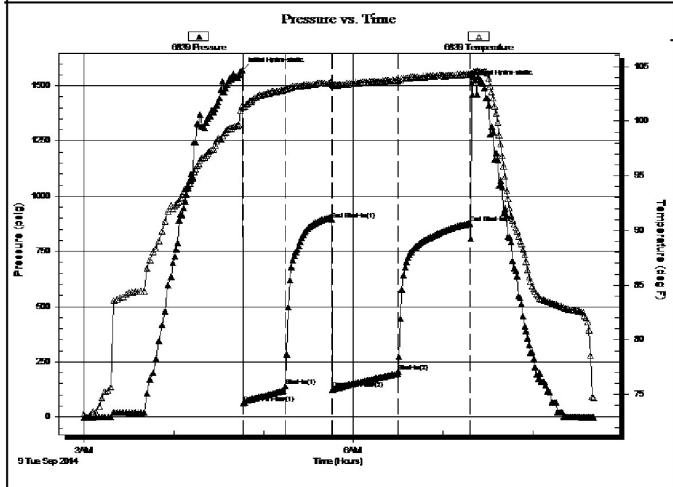
GENERAL INFORMATION:

Formation: Lansing H-I-J	Deviated: No Whipstock: ft (KB)	Test Type: Conventional Bottom Hole (Initial)
Time Tool Opened: 04:45:26	Time Test Ended: 08:47:56	Tester: Dustin Ellis
Interval: 3105.00 ft (KB) To 3185.00 ft (KB) (TVD)	Reference Elevations: 1797.00 ft (KB)	Unit No: 3315-Great Bend-80
Total Depth: 3185.00 ft (KB) (TVD)	1787.00 ft (CF)	
Hole Diameter: 7.88 inches	Hole Condition: Fair	KB to GR/CF: 10.00 ft

Serial #: 6839 Inside

Press@RunDepth: 876.39 psig @ 3180.19 ft (KB)	Capacity: 5000.00 psig
Start Date: 2014.09.09 End Date: 2014.09.09	Last Calib.: 2014.09.09
Start Time: 03:00:00 End Time: 08:41:00	Time On Btm: 2014.09.09 @ 04:45:30
	Time Off Btm: 2014.09.09 @ 07:19:00

TEST COMMENT: 1st Open 30 minutes Fair building blow built to the bottom of a 5 gallon bucket of water in 12 minutes.
 1st Shu in 30 minutes No blow back
 2nd Open 45 minutes Fair building blow built to bottom bucket in 18 minutes.
 2nd Shut in 45 minutes No blow back

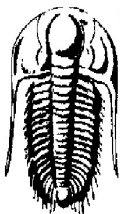


PRESSURE SUMMARY			
Time (Min.)	Pressure (psig)	Temp (deg F)	Annotation
0	1570.30	101.38	Initial Hydro-static
1	63.53	101.30	Open To Flow (1)
29	138.48	102.95	Shut-In(1)
61	893.62	103.46	End Shut-In(1)
61	125.40	103.37	Open To Flow (2)
105	206.78	103.81	Shut-In(2)
153	876.39	104.32	End Shut-In(2)
154	1511.72	104.37	Final Hydro-static

Recovery		
Length (ft)	Description	Volume (bbl)
120.00	Oil cut mud Oil 3% Mud 97%	1.68
2.00	Clean oil 100%	0.03
180.00	Muddy water 90% water 10% mud	2.52
0.00	Chlorides 19,000	0.00

Gas Rates			
	Choke (inches)	Pressure (psig)	Gas Rate (Mcf/d)

Image Header 04



TRILOBITE TESTING, INC.

DRILL STEM TEST REPORT

American Warrior
 3118 Cummings Rd
 Garden City Kansas 67846
 ATTN: Wyatt

10-18s-10w Rice
Hoelscher 1-10
 Job Ticket: 60316 **DST#: 2**
 Test Start: 2014.09.09 @ 08:10:00

GENERAL INFORMATION:

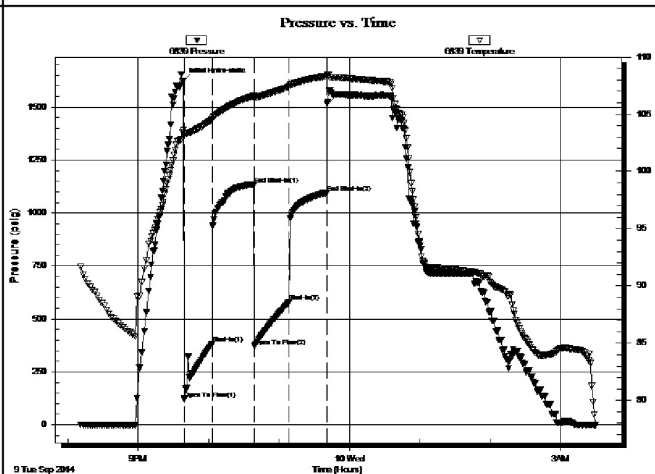
Formation: **Arbuckle**
 Deviated: No Whipstock: ft (KB)
 Time Tool Opened:
 Time Test Ended:
Interval: 3207.00 ft (KB) To 3280.00 ft (KB) (TVD)
 Total Depth: 3280.00 ft (KB) (TVD)
 Hole Diameter: 7.88 inches Hole Condition: Fair
 Test Type: Conventional Bottom Hole (Initial)
 Tester: Dustin Ellis
 Unit No: 3315-Great Bend-80
 Reference Elevations: 1797.00 ft (KB)
 1787.00 ft (CF)
 KB to GR/CF: 10.00 ft

Serial #: 6839

Inside

Press@RunDepth: 579.69 psig @ 3274.19 ft (KB) Capacity: 5000.00 psig
 Start Date: 2014.09.09 End Date: 2014.09.10 Last Calib.: 2014.09.10
 Start Time: 20:11:00 End Time: 03:30:00 Time On Btm: 2014.09.09 @ 21:38:30
 Time Off Btm: 2014.09.09 @ 23:41:00

TEST COMMENT: 1st Open 30 minutes Strong building blow built to bottom of a 5 gallon bucket of water in 2 minutes.
 1st Shut in 30 minutes No blow back
 2nd Open 30 minutes Strong building blow built to bottom of a 5 gallon bucket of water in 2.5 minutes.
 2nd Shut in 30 minutes No blow back



PRESSURE SUMMARY

Time (Min.)	Pressure (psig)	Temp (deg F)	Annotation
0	1623.01	103.59	Initial Hydro-static
1	119.36	103.25	Open To Flow (1)
25	383.54	104.55	Shut-In(1)
60	1135.14	106.61	End Shut-In(1)
61	371.63	106.42	Open To Flow (2)
90	579.69	107.40	Shut-In(2)
122	1095.45	108.32	End Shut-In(2)
123	1513.32	108.47	Final Hydro-static

Recovery

Length (ft)	Description	Volume (bbl)
1071.00	Clean oil 100%	15.02
252.00	Oil cut mud 98%oil 2%mud	3.53
0.00	Gravity of oil 39 corrected	0.00

Gas Rates

Choke (inches)	Pressure (psig)	Gas Rate (Mcf/d)

ROCK TYPES

Chctongl	Lmst fw<7 shale, grn	Carbon Sh shale, red	Shcol
Dolprim			

ACCESSORIES

STRINGER

~~~~ Chert  
 Sandstone

**TEXTURE**

C Chalky  
 FX Finexln

**OTHER SYMBOLS**

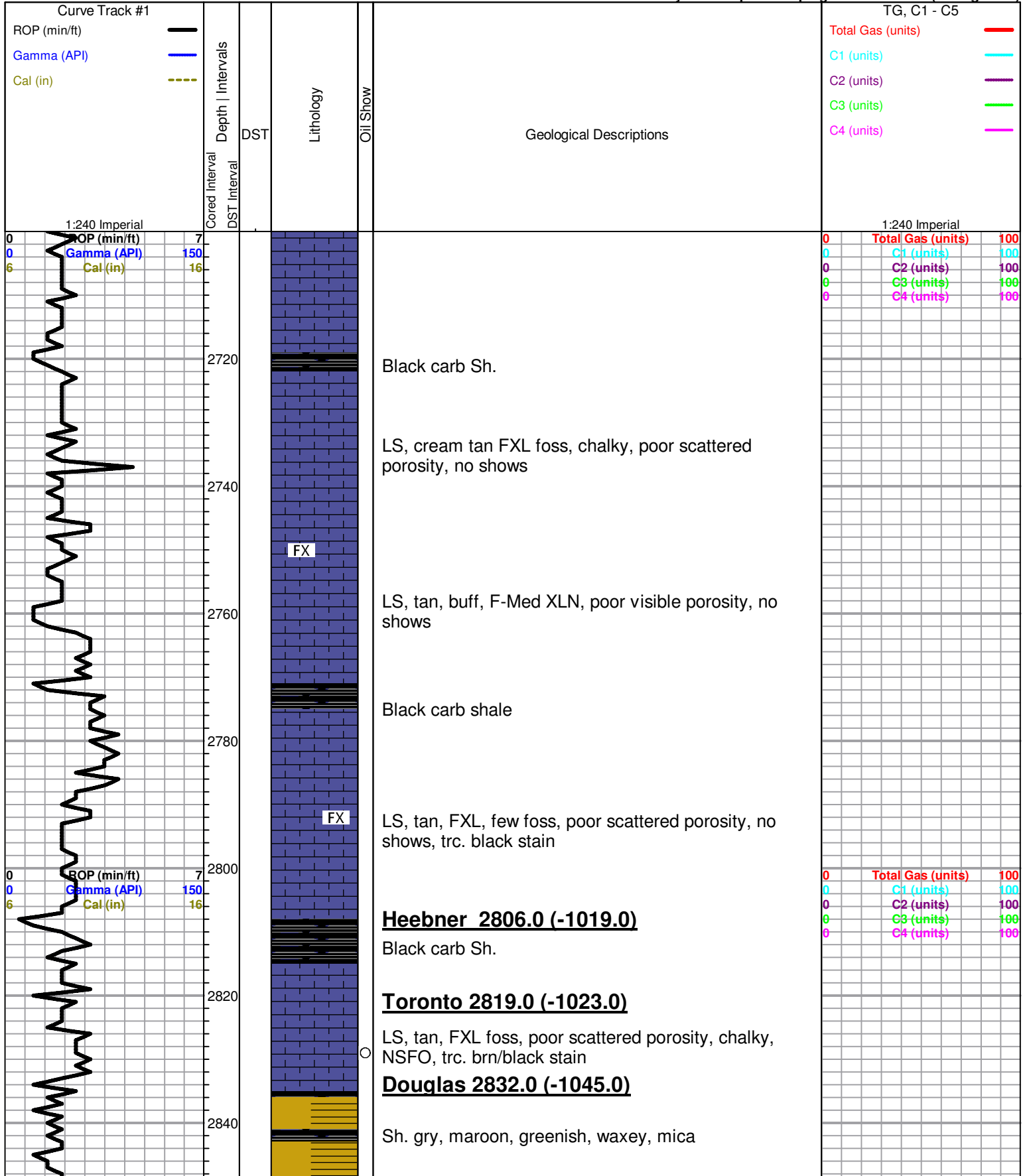
**Oil Show**

- Good Show
- Fair Show
- Poor Show
- Spotted or Trace
- Questionable Stn
- Dead Oil Stn
- Fluorescence
- \* Gas

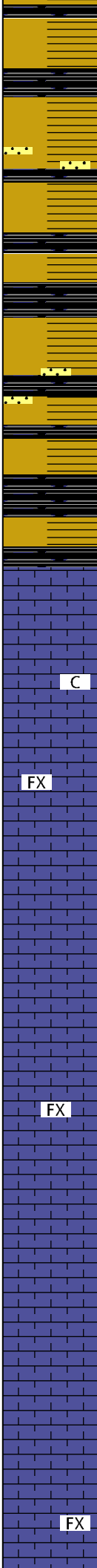
**DST**

- DST Int
- DST alt
- Core
- tail pipe

Printed by GEOstrip VC Striplog version 4.0.8.7 (www.grsi.ca)



2860  
2880  
2900  
2920  
2940  
2960  
2980  
3000  
3020  
3040  
3060



Sh. gry, black, maroon, mica,  
Trc. Sd. gry, F. grain, sub rounded, well sorted, NSFO

Sh. gry, maroon, black, silty, mica.

Sh. gry, black, maroon, mica, trc. Sd. gry, F.- Med.  
grained, sub rounded, well sorted, friable, no shows,  
no odor

Sh. maroon, black carb, gray

**Brown Lime 2927.0 (-1135.0)**

LS, tan, brown, FXL, dense, poor visible porosity, N/S

**Lansing 2938.0 (-1151.0)**

C

LS, cream, FXL, chalky, poor visible porosity, no  
shows

FX

LS, cream, tan, buff, FXL, dense, few foss, poor visible  
porosity, chalky, no shows

LS, tan, buff, FXL, chalky, poor visible porosity, no  
shows

FX

LS, tan, F-Med XLN, dense, chalky, poor scattered  
porosity, NSFO, odor???

LS, cream, tan, FXL, chalky, few foss, poor visible  
porosity, no shows

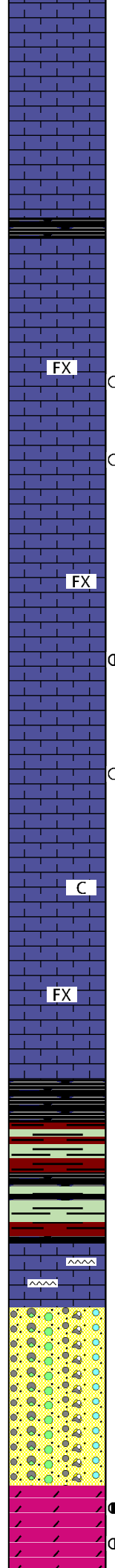
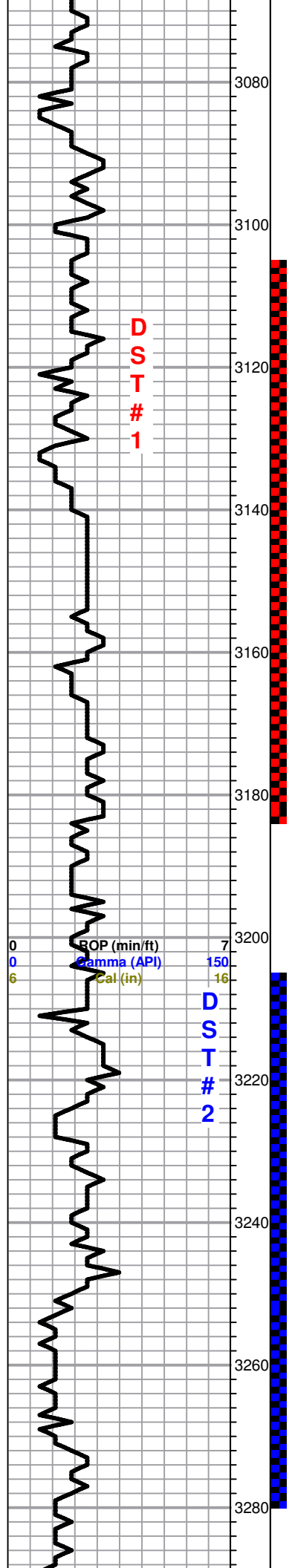
LS, tan, brown, F-Med XLN, ool, good vuggy oom  
porosity, barren

FX

LS, tan, gry, FXL, dense, poor visible porosity, no  
shows

ROP (min/ft) 7  
Gamma (API) 150  
Cal (in) 16

|   |                   |     |
|---|-------------------|-----|
| 0 | Total Gas (units) | 100 |
| 0 | C1 (units)        | 100 |
| 0 | C2 (units)        | 100 |
| 0 | C3 (units)        | 100 |
| 0 | C4 (units)        | 100 |



LS, tan, cream, FXL, chalky, poor visible porosity, no shows

Black carb Sh.

LS, cream, white, FXL, ool, poor scattered oom porosity, NSFO, Lt. trace brown stain, no odor

LS, cream, ool, poor oom vuggy porosity, trc. brown stain, odor???

LS, tan, brown, FXL, dense, poor visible porosity, no shows

LS, tan, brown, F-Med XLN, few ool, poor oom porosity, Lt. SFO, golden brown stain, faint odor

LS, white, cream, FXL, chalky, poor visible porosity, Lt. golden brown stain, V. Lt. trc SFO, odor???

LS, cream, tan, FXL, chalky, poor visible porosity, no shows

LS, tan, cream, FXL, dense, few foss, poor scattered porosity, NSFO, no odor, Sh. gry black maroon silty

**BKC 3218.0 (-1431.0)**

Sh. black maroon greenish

Sh, maroon, greenish, waxey

LS, cream, tan, FXL, dense, poor visible porosity, trace Chert V. C.

**Conglomerate 3246.0 (-1459.0)**

Sh. maroon, chert, V. C. no shows

Sh. maroon, chert, orange, boney white, opaque, no shows

**Arbuckle 3277.0 (-1490.0)**

Dol tan, FXL, poor visible porosity, poor INXLN porosity, Lt. Spty, SFO, no odor

**DST #1 3105-3185**

30-30-45-45

Blow: BOB 12 min

Recovery:

2' Clean Oil

120' OCM (3%O, 97%M)

180' MW (10%M,90%W)

Pressures:

- ISIP 903 psi
- FSIP 877 psi
- IFP 61-120 psi
- FFP 125-199 psi
- HSH 1568-1517 psi

**DST#2 3207-**

**3280**

30-30-30-30

Blow: BOB 2 min

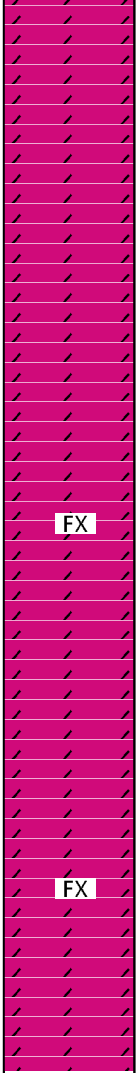
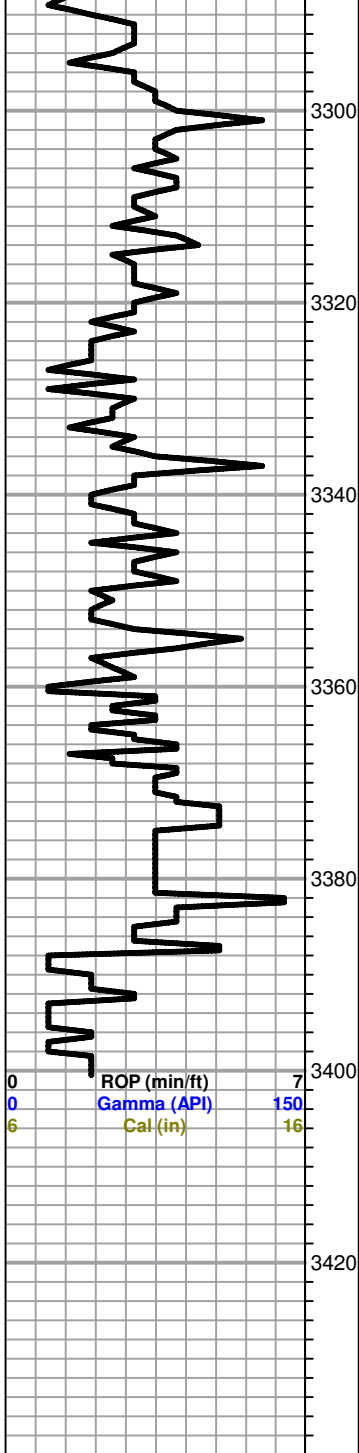
Recovery:

1071' Clean Oil

252' OCM (98%O, 2%M)

Pressures:

- ISIP 1135 psi
- FSIP 1095 psi
- IFP 119-383 psi
- FFP 371-579 psi
- HSH 1623-1513 psi



Dol. tan, cream, FXL, poor visible porosity, poor INXLN porosity, spty SFO, faint odor

Dol. white, gry, FXL, suc, poor to fair scattered porosity, poor INXLN porosity, no shows

Dol. tan, gry, FXL, suc, poor scattered porosity, poor INXLN porosity, barren

FX

Dol. tan, gry, white, FXL, suc. poor visible INXLN porosity, barren, no odor

Dol. tan, F-MXL, poor to fair scattered vuggy porosity, no shows, no odor

FX

Dol. white, gry, FXL, poor visible porosity, poor INXLN porosity, no shows

Dol. white, gry, FXL, dense, poor visible porosity, no shows, no odor

Trc. qtz, clear, fractured, granular,

**RTD 3400.0 (-1613.0)**

|   |                   |     |
|---|-------------------|-----|
| 0 | Total Gas (units) | 100 |
| 0 | C1 (units)        | 100 |
| 0 | C2 (units)        | 100 |
| 0 | C3 (units)        | 100 |
| 0 | C4 (units)        | 100 |