



DRILL STEM TEST REPORT

Prepared For: **American Warrior**

PO Box 399
Garden City KS 67846

ATTN: Wyatt Urban

Hoelscher #2-10

10-18s-10w Rice,KS

Start Date: 2014.09.17 @ 01:00:00

End Date: 2014.09.17 @ 06:16:00

Job Ticket #: 60320 DST #: 1

Trilobite Testing, Inc
1515 Commerce Parkway Hays, KS 67601
ph: 785-625-4778 fax: 785-625-5620

Printed: 2014.09.18 @ 15:18:57



**TRILOBITE
TESTING, INC**

DRILL STEM TEST REPORT

American Warrior
PO Box 399
Garden City KS 67846
ATTN: Wyatt Urban

10-18s-10w Rice, KS
Hoelscher #2-10
Job Ticket: 60320 **DST#: 1**
Test Start: 2014.09.17 @ 01:00:00

GENERAL INFORMATION:

Formation: **LKC H-J**
Deviated: No Whipstock: ft (KB)
Time Tool Opened: 02:33:00
Time Test Ended: 06:16:00
Interval: **3078.00 ft (KB) To 3164.00 ft (KB) (TVD)**
Total Depth: 3164.00 ft (KB) (TVD)
Hole Diameter: 7.88 inches Hole Condition: Fair
Test Type: Conventional Bottom Hole (Initial)
Tester: Dustin Ellis
Unit No: S2
Reference Elevations: 1800.00 ft (KB)
1792.00 ft (CF)
KB to GR/CF: 8.00 ft

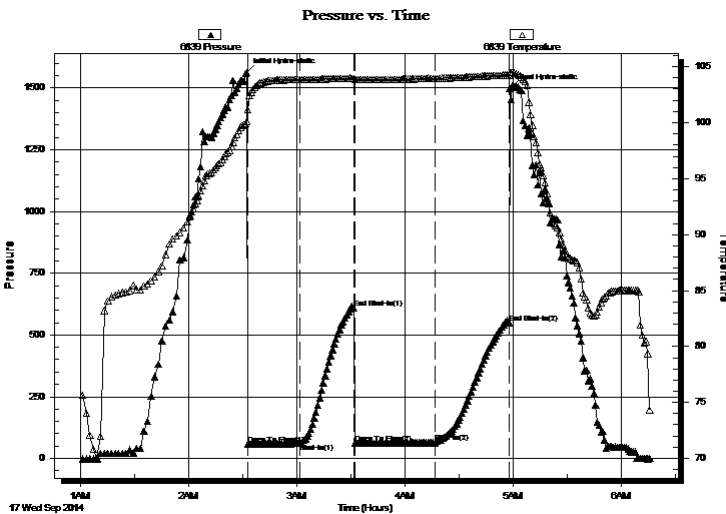
Serial #: 6839

Inside

Press@RunDepth: 550.34 psig @ 3159.76 ft (KB) Capacity: 5000.00 psig
Start Date: 2014.09.17 End Date: 2014.09.17 Last Calib.: 2014.09.17
Start Time: 01:01:00 End Time: 06:15:30 Time On Btm: 2014.09.17 @ 02:32:00
Time Off Btm: 2014.09.17 @ 04:58:00

TEST COMMENT: IFP 30 Weak blow built to 1"
ISI 30 No blow back.
FFP 45 Weak surface blow died off.
FSI 45 No blow back.

PRESSURE SUMMARY



Time (Min.)	Pressure (psig)	Temp (deg F)	Annotation
0	1562.81	100.14	Initial Hydro-static
1	57.53	101.15	Open To Flow (1)
30	60.96	103.83	Shut-In(1)
60	610.05	103.97	End Shut-In(1)
60	61.11	103.84	Open To Flow (2)
105	63.81	103.96	Shut-In(2)
146	550.34	104.25	End Shut-In(2)
146	1498.61	104.50	Final Hydro-static

Recovery

Length (ft)	Description	Volume (bbl)
10.00	Mud 100%	0.14

Gas Rates

	Choke (inches)	Pressure (psig)	Gas Rate (Mcf/d)



**TRILOBITE
TESTING, INC**

DRILL STEM TEST REPORT

TOOL DIAGRAM

American Warrior

10-18s-10w Rice,KS

PO Box 399
Garden City KS 67846

Hoelscher #2-10

Job Ticket: 60320

DST#: 1

ATTN: Wyatt Urban

Test Start: 2014.09.17 @ 01:00:00

Tool Information

Drill Pipe:	Length: 3065.00 ft	Diameter: 3.80 inches	Volume: 42.99 bbl	Tool Weight:	2000.00 lb
Heavy Wt. Pipe:	Length: 0.00 ft	Diameter: 0.00 inches	Volume: 0.00 bbl	Weight set on Packer:	20000.00 lb
Drill Collar:	Length: 0.00 ft	Diameter: 0.00 inches	Volume: 0.00 bbl	Weight to Pull Loose:	52000.00 lb
			<u>Total Volume: 42.99 bbl</u>	Tool Chased	2.00 ft
Drill Pipe Above KB:	15.00 ft			String Weight: Initial	45000.00 lb
Depth to Top Packer:	3078.00 ft			Final	45000.00 lb
Depth to Bottom Packer:	ft				
Interval between Packers:	86.76 ft				
Tool Length:	114.76 ft				
Number of Packers:	2	Diameter: 6.75 inches			

Tool Comments:

Tool Description

Tool Description	Length (ft)	Serial No.	Position	Depth (ft)	Accum. Lengths
Shut In Tool	5.00			3055.00	
Hydraulic tool	5.00			3060.00	
Jars	6.00			3066.00	
Safety Joint	2.00			3068.00	
Top Packer	5.00			3073.00	
Packer	5.00			3078.00	28.00 Bottom Of Top Packer
Anchor	5.00			3083.00	
Change Over Sub	0.75			3083.75	
Drill Pipe	63.26			3147.01	
Change Over Sub	0.75			3147.76	
Anchor	12.00			3159.76	
Recorder	0.00	6839	Inside	3159.76	
Recorder	0.00	6999	Outside	3159.76	
Bull Plug	5.00			3164.76	86.76 Anchor Tool

Total Tool Length: 114.76



**TRILOBITE
TESTING, INC**

DRILL STEM TEST REPORT

FLUID SUMMARY

American Warrior

10-18s-10w Rice,KS

PO Box 399
Garden City KS 67846

Hoelscher #2-10

Job Ticket: 60320

DST#: 1

ATTN: Wyatt Urban

Test Start: 2014.09.17 @ 01:00:00

Mud and Cushion Information

Mud Type: Gel Chem

Cushion Type:

Oil API:

deg API

Mud Weight: 9.00 lb/gal

Cushion Length:

ft

Water Salinity:

ppm

Viscosity: 44.00 sec/qt

Cushion Volume:

bbbl

Water Loss: 9.18 in³

Gas Cushion Type:

Resistivity: ohm.m

Gas Cushion Pressure:

psig

Salinity: 3500.00 ppm

Filter Cake: 1.00 inches

Recovery Information

Recovery Table

Length ft	Description	Volume bbl
10.00	Mud 100%	0.140

Total Length: 10.00 ft Total Volume: 0.140 bbl

Num Fluid Samples: 0

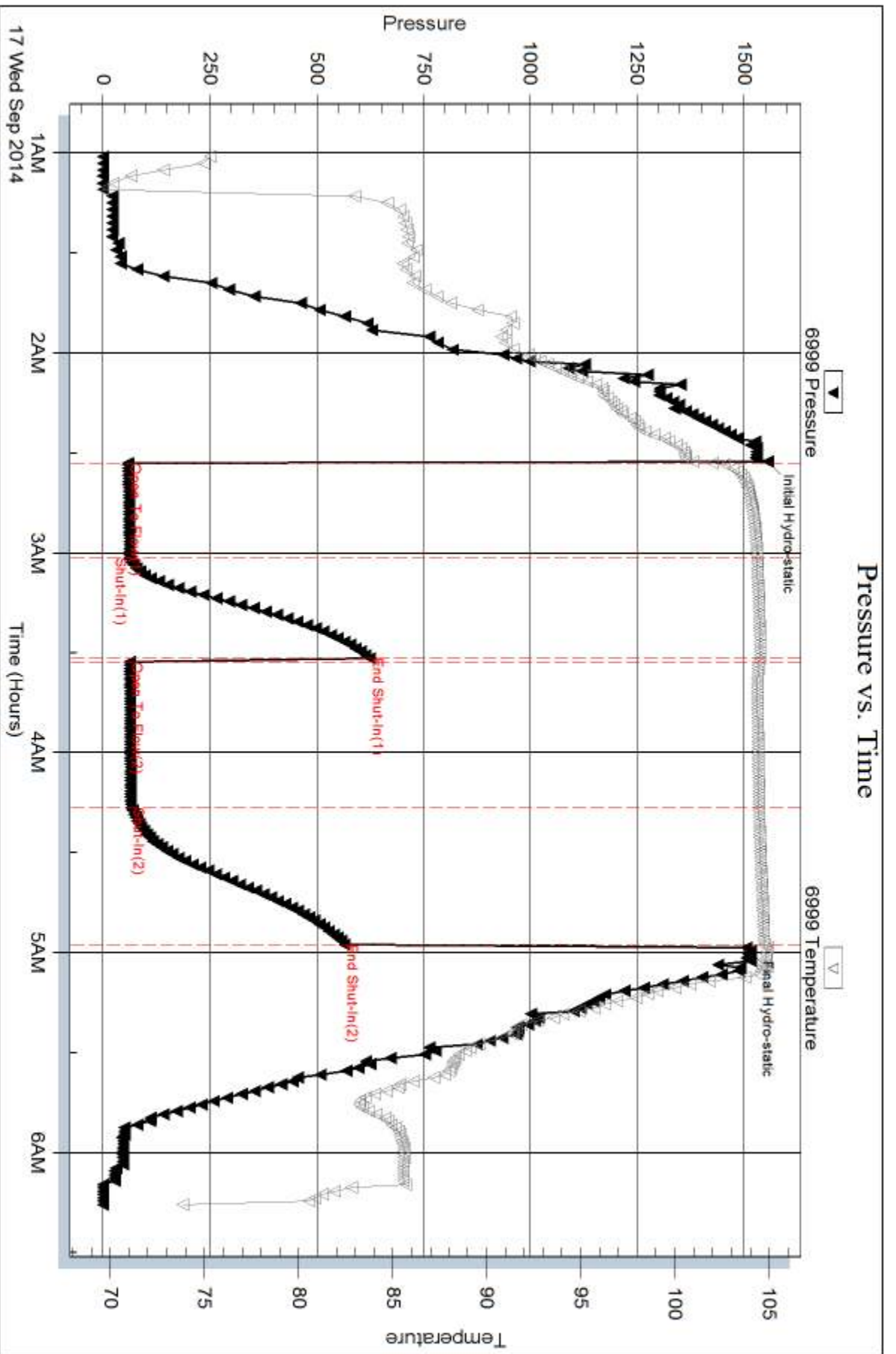
Num Gas Bombs: 0

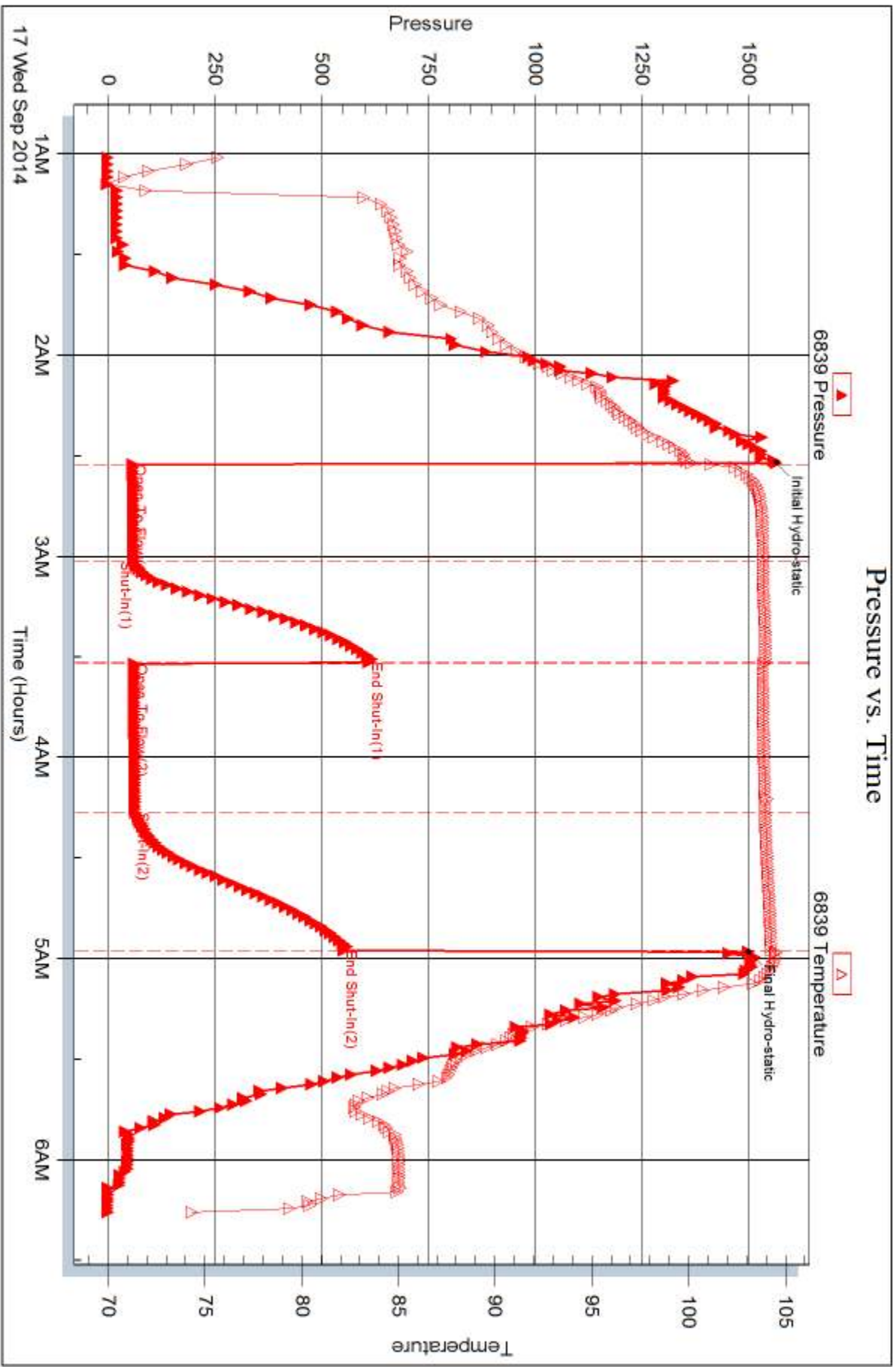
Serial #:

Laboratory Name:

Laboratory Location:

Recovery Comments:







DRILL STEM TEST REPORT

Prepared For: **American Warrior**

PO Box 399
Garden City KS 67846

ATTN: Wyatt Urban

Hoelscher #2-10

10-18s-10w Rice,KS

Start Date: 2014.09.17 @ 05:00:00

End Date: 2014.09.17 @ 16:47:53

Job Ticket #: 60321 DST #: 2

Trilobite Testing, Inc
1515 Commerce Parkway Hays, KS 67601
ph: 785-625-4778 fax: 785-625-5620

Printed: 2014.09.18 @ 15:05:54



**TRILOBITE
TESTING, INC**

DRILL STEM TEST REPORT

American Warrior
PO Box 399
Garden City KS 67846
ATTN: Wyatt Urban

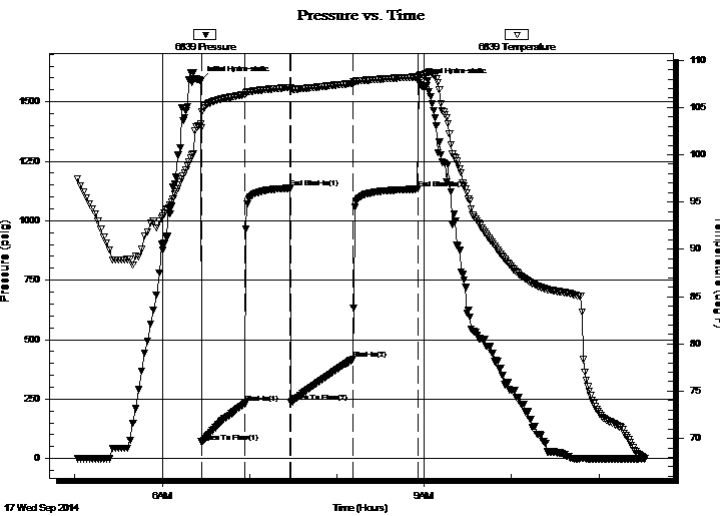
10-18s-10w Rice, KS
Hoelscher #2-10
Job Ticket: 60321 **DST#: 2**
Test Start: 2014.09.17 @ 05:00:00

GENERAL INFORMATION:

Formation: **Arbuckle**
Deviated: No Whipstock: ft (KB)
Time Tool Opened: 06:32:30
Time Test Ended: 16:47:53
Interval: **3220.00 ft (KB) To 3294.00 ft (KB) (TVD)**
Total Depth: 3294.00 ft (KB) (TVD)
Hole Diameter: 7.88 inches Hole Condition: Fair
Test Type: Conventional Bottom Hole (Initial)
Tester: Dustin Ellis
Unit No: S2
Reference Elevations: 1800.00 ft (KB)
1792.00 ft (CF)
KB to GR/CF: 8.00 ft

Serial #: 6839 Inside
Press@RunDepth: 416.70 psig @ 3289.94 ft (KB) Capacity: 5000.00 psig
Start Date: 2014.09.17 End Date: 2014.09.17 Last Calib.: 2014.09.18
Start Time: 05:01:53 End Time: 11:31:53 Time On Btm: 2014.09.17 @ 06:26:23
Time Off Btm: 2014.09.17 @ 08:56:23

TEST COMMENT: IFP 30 BOB in 5 minutes.
ISI 30 s No blow back.
FFP 45 BOB in 7 minutes.
FSI 45 No blow back.



PRESSURE SUMMARY

Time (Min.)	Pressure (psig)	Temp (deg F)	Annotation
0	1587.20	103.23	Initial Hydro-static
1	69.75	102.89	Open To Flow (1)
31	231.12	106.36	Shut-In(1)
62	1136.94	107.13	End Shut-In(1)
62	237.78	106.90	Open To Flow (2)
105	416.70	107.56	Shut-In(2)
149	1132.92	108.24	End Shut-In(2)
150	1581.74	108.38	Final Hydro-static

Recovery

Length (ft)	Description	Volume (bbl)
693.00	Clean oil 100%	9.72
242.00	Oil cut mud 85%Oil 15%Mud	3.39
63.00	Oil cut mud 76% Oil 24%Mud	0.88

Gas Rates

	Choke (inches)	Pressure (psig)	Gas Rate (Mcf/d)



**TRILOBITE
TESTING, INC**

DRILL STEM TEST REPORT

TOOL DIAGRAM

American Warrior

10-18s-10w Rice,KS

PO Box 399
Garden City KS 67846

Hoelscher #2-10

Job Ticket: 60321

DST#: 2

ATTN: Wyatt Urban

Test Start: 2014.09.17 @ 05:00:00

Tool Information

Drill Pipe:	Length: 3222.00 ft	Diameter: 3.80 inches	Volume: 45.20 bbl	Tool Weight: 2000.00 lb
Heavy Wt. Pipe:	Length: 0.00 ft	Diameter: 0.00 inches	Volume: 0.00 bbl	Weight set on Packer: 20000.00 lb
Drill Collar:	Length: 0.00 ft	Diameter: 0.00 inches	Volume: 0.00 bbl	Weight to Pull Loose: 58000.00 lb
			<u>Total Volume: 45.20 bbl</u>	Tool Chased 3.00 ft
Drill Pipe Above KB:	30.00 ft			String Weight: Initial 50000.00 lb
Depth to Top Packer:	3220.00 ft			Final 53000.00 lb
Depth to Bottom Packer:	ft			
Interval between Packers:	74.94 ft			
Tool Length:	102.94 ft			
Number of Packers:	2	Diameter: 6.75 inches		

Tool Comments:

Tool Description

Tool Description	Length (ft)	Serial No.	Position	Depth (ft)	Accum. Lengths
Shut In Tool	5.00			3197.00	
Hydraulic tool	5.00			3202.00	
Jars	6.00			3208.00	
Safety Joint	2.00			3210.00	
Top Packer	5.00			3215.00	
Packer	5.00			3220.00	28.00 Bottom Of Top Packer
Anchor	5.00			3225.00	
Change Over Sub	0.75			3225.75	
Drill Pipe	31.44			3257.19	
Change Over Sub	0.75			3257.94	
Anchor	32.00			3289.94	
Recorder	0.00	6839	Inside	3289.94	
Recorder	0.00	6999	Outside	3289.94	
Bull Plug	5.00			3294.94	74.94 Anchor Tool

Total Tool Length: 102.94



**TRILOBITE
TESTING, INC**

DRILL STEM TEST REPORT

FLUID SUMMARY

American Warrior

10-18s-10w Rice,KS

PO Box 399
Garden City KS 67846

Hoelscher #2-10

Job Ticket: 60321

DST#: 2

ATTN: Wyatt Urban

Test Start: 2014.09.17 @ 05:00:00

Mud and Cushion Information

Mud Type: Gel Chem

Cushion Type:

Oil API:

39 deg API

Mud Weight: 9.00 lb/gal

Cushion Length:

ft

Water Salinity:

ppm

Viscosity: 53.00 sec/qt

Cushion Volume:

bbbl

Water Loss: 8.78 in³

Gas Cushion Type:

Resistivity: ohm.m

Gas Cushion Pressure:

psig

Salinity: 4300.00 ppm

Filter Cake: 1.00 inches

Recovery Information

Recovery Table

Length ft	Description	Volume bbl
693.00	Clean oil 100%	9.721
242.00	Oil cut mud 85%Oil 15%Mud	3.395
63.00	Oil cut mud 76% Oil 24%Mud	0.884

Total Length: 998.00 ft Total Volume: 14.000 bbl

Num Fluid Samples: 0

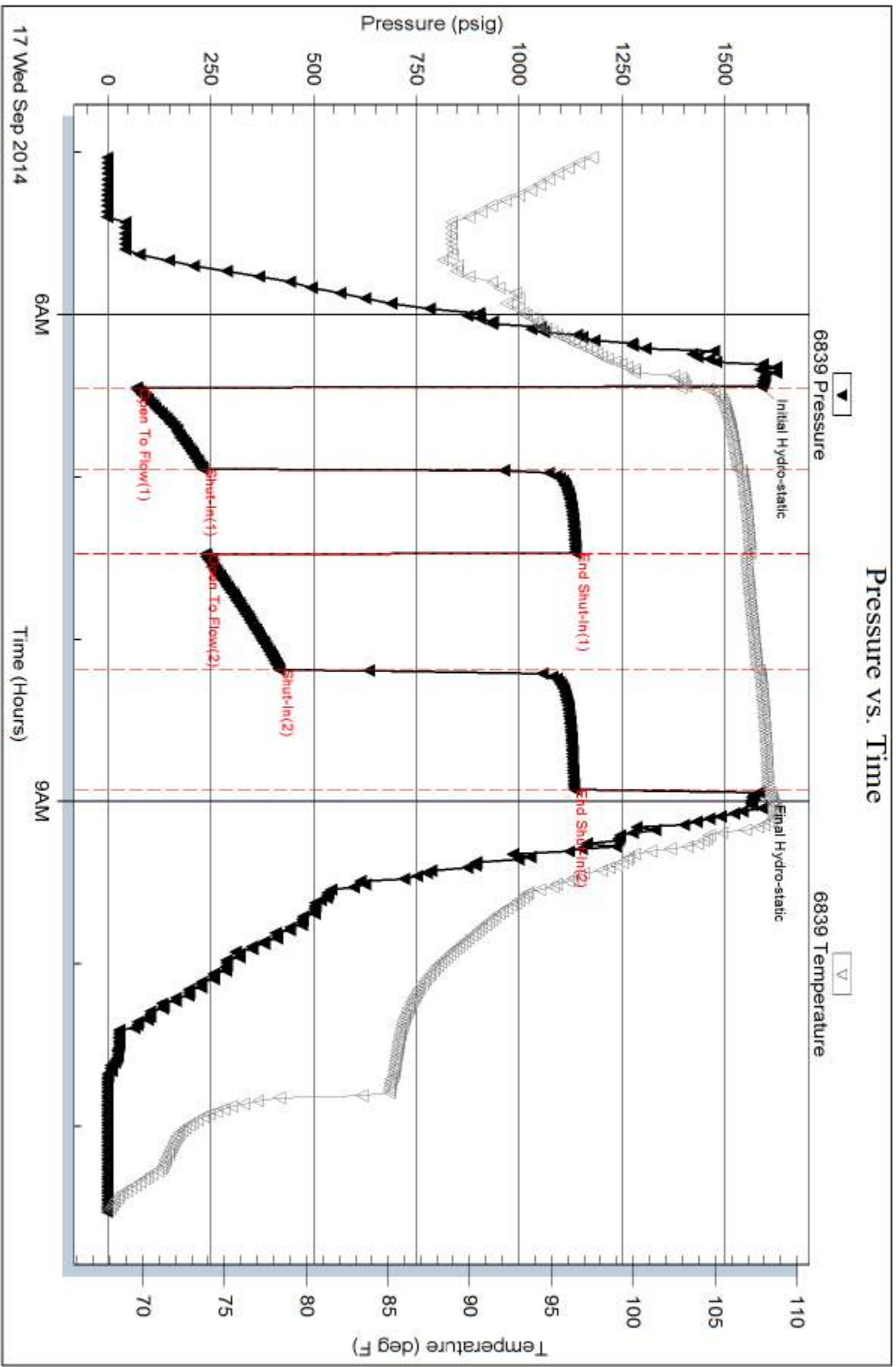
Num Gas Bombs: 0

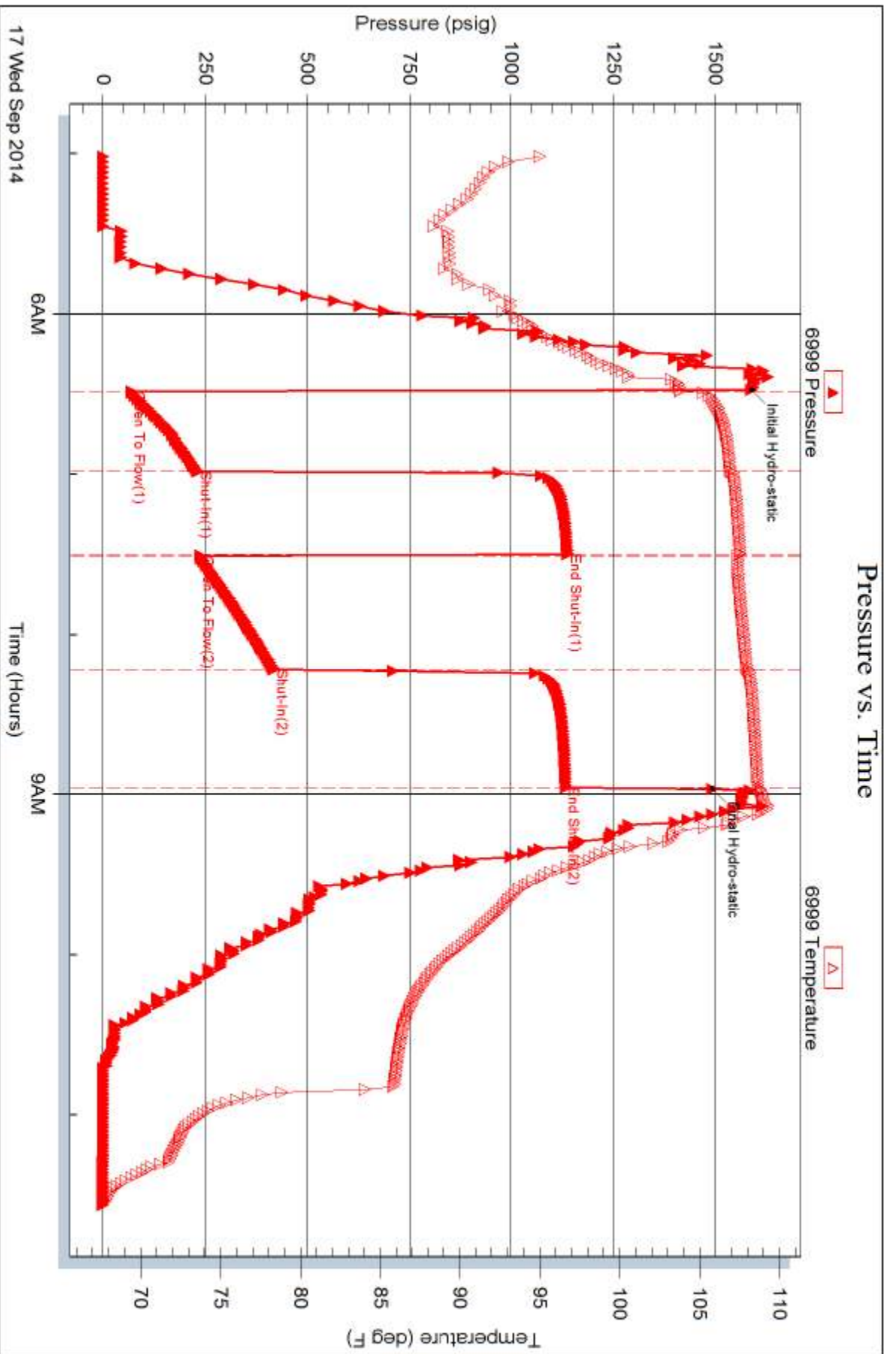
Serial #:

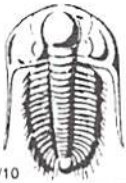
Laboratory Name:

Laboratory Location:

Recovery Comments: Gravity of oil 39 corrected







TRILOBITE TESTING INC.

1515 Commerce Parkway • Hays, Kansas 67601

Test Ticket

NO. 60321

Well Name & No. Hoelscher 2-10 Test No. 2 Date 9-17-14
 Company American Warrior Elevation 1792 KB 1800 GL
 Address 3118 Cummings RD Garden City Kansas 67846
 Co. Rep / Geo. Watt Urban Rig Dutrie Drilling Rig #8
 Location: Sec. 10 Twp. 16S Rge. 10W Co. Rice State KS

Interval Tested 3220 - 3294 Zone Tested Arbuckle
 Anchor Length 74 Drill Pipe Run 3222 Mud Wt. 9.2
 Top Packer Depth 3215 Drill Collars Run 0 Vis 53
 Bottom Packer Depth 3220 Wt. Pipe Run 20,000 WL 8.8
 Total Depth 3294 Chlorides 4300 ppm System LCM 1

Blow Description 1st open - strong blow built to the bottom of a 5 gallon bucket in 1st shut in 5 minutes. No blow back.
2nd open - Strong blow built to bottom bucket in 7 minutes.
2nd shut in - No blow back

Rec	Feet of	%gas	%oil	%water	%mud
<u>693</u>	<u>Clean oil</u>	<u>100</u>			
<u>242</u>	<u>oil cut mud</u>	<u>85</u>		<u>15</u>	
<u>63</u>	<u>oil cut mud</u>	<u>76</u>		<u>24</u>	

Rec Total 1008 BHT - Gravity 39 API RW @ 1150 °F Chlorides ppm
 (A) Initial Hydrostatic 1587 Test bottom hole T-On Location 4:30 pm
 (B) First Initial Flow 69 Jars Yes 250 T-Started 5:00 pm
 (C) First Final Flow 231 Safety Joint Yes 75 T-Open 6:27 p
 (D) Initial Shut-In 1136 Circ Sub - T-Pulled 8:57 pm
 (E) Second Initial Flow 237 Hourly Standby - T-Out -
 (F) Second Final Flow 416 Mileage 80 53rt 82.15 Comments
 (G) Final Shut-In 1132 Sampler -
 (H) Final Hydrostatic 1521 Straddle - Ruined Shale Packer -
 Shale Packer - Ruined Packer -
 Extra Packer - Extra Copies -

Initial Open 30 Extra Recorder - Sub Total .0
 Initial Shut-In 30 Day Standby - Total 1557.15
 Final Flow 45 Accessibility - MP/DST Disc't
 Final Shut-In 45 Sub Total 1557.15

Approved By _____ Our Representative Dustin Ellis

Trilobite Testing Inc. shall not be liable for damaged of any kind of the property or personnel of the one for whom a test is made, or for any loss suffered or sustained, directly or indirectly, through the use of its equipment, or its statements or opinion concerning the results of any test, tools lost or damaged in the hole shall be paid for at cost by the party for whom the test is made.



TRILOBITE TESTING INC.

1515 Commerce Parkway • Hays, Kansas 67601

Test Ticket

NO. 60320

Well Name & No. Hoelsther 2-10 Test No. 1 Date 9-17-11
 Company American Warrior Elevation 1792 KB 1800 GL
 Address PO Box 399 Garden city Kansas 67846 - 3118 Cummings RD
 Co. Rep / Geo. Wyatt Urban Rig Duke Drilling Rig #8
 Location: Sec. 10 Twp. 18s Rge. 10w Co. Rice State Ks

Interval Tested 3078 - 3164 Zone Tested Lansing H.I.J
 Anchor Length 86 Drill Pipe Run 3065 Mud Wt. 9.0
 Top Packer Depth 3073 Drill Collars Run 0 Vis 44
 Bottom Packer Depth 3078 Wt. Pipe Run 20,000 WL 9.2
 Total Depth 3164 Chlorides 3500 ppm System LCM 3500-1

Blow Description 1st open - weak blow build to lunch into a 5 gallon bucket.
1st shut in - No blow back
2nd open - weak surf blow died off.
2nd shut in - No blow back.

Rec	Feet of	%gas	%oil	%water	%mud
<u>10</u>	<u>mud</u>			<u>100</u>	

Rec Total 10 BHT _____ Gravity _____ API RW _____ @ _____ °F Chlorides _____ ppm

(A) Initial Hydrostatic 1555 Test bottom hole 1150 T-On Location 11:45pm
 (B) First Initial Flow 58 Jars Yes 250 T-Started 1:00am
 (C) First Final Flow 61 Safety Joint Yes 75 T-Open 2:32am
 (D) Initial Shut-In 623 Circ Sub none T-Pulled 5:02am
 (E) Second Initial Flow 61 Hourly Standby none T-Out 6:30am
 (F) Second Final Flow 64 Mileage 80 road miles 82.15 Comments _____
 (G) Final Shut-In 564 Sampler _____
 (H) Final Hydrostatic 1506 Straddle _____ Ruined Shale Packer none
 Shale Packer _____ Ruined Packer _____
 Extra Packer _____ Extra Copies none

Initial Open 30
 Initial Shut-In 30
 Final Flow 45
 Final Shut-In 45

Extra Recorder _____
 Day Standby _____
 Accessibility _____

Sub Total 1557.15

Sub Total _____ Total 1557.15
 MP/DST Disc't _____

Approved By _____ Our Representative Dustin Ellis
 Trilobite Testing Inc. shall not be liable for damaged of any kind of the property or personnel of the one for whom a test is made, or for any loss suffered or sustained, directly or indirectly, through the use of its equipment, or its statements or opinion concerning the results of any test, tools lost or damaged in the hole shall be paid for at cost by the party for whom the test is made.