

GEOLOGIC REPORT

DAVID J. GOLDAK

WICHITA, KANSAS
Scale 1:240 (5"=100') Imperial
Measured Depth Log

Well Name: Southwestern #1-3
Location: Section 3 - T31S - R41W
License Number: API: 15-129-21968
Spud Date: 10 / 03 / 2014
Surface Coordinates: 670' FSL and 1070' FWL
SE - NE - SW - SW
Region: Morton Co., KS
Drilling Completed: 10 / 11 / 2014
Bottom Hole Coordinates:
Ground Elevation (ft): 3388' K.B. Elevation (ft): 3399'
Logged Interval (ft): 3600' To: 5620' Total Depth (ft): 5620'
Formation: Mississippian - St Louis
Type of Drilling Fluid: Chemical - Mud-Co

Printed by MUD.LOG from WellSight Systems 1-800-447-1534 www.WellSight.com

OPERATOR

Company: Stelbar Oil Corporation
Address: 1625 N. Waterfront Pkwy., Suite 200
Wichita, Kansas 67206-6602

GEOLOGIST

Name: David J. Goldak
Company: D. J. GOLDAK, INC.
Address: 155 N. Market, Suite 710
Wichita, Kansas 67202

General Info

CONTRACTOR: Sterling Drilling, Rig #2

BIT RECORD:

No.	Size	Make	Jets	Out	Feet	Hours
1	12-1/4	JZ-HAOTC	3-18s	1670	1670	23.50
2	7-7/8	JZ-HAIP	3-15s	1732	62	1.25
3	7-7/8	Smith-SI616	6-16s	5015	3283	44.75
4	7-7/8	Smith-SI616	6-15s	5620	605	15.00

SURVEYS: 1670'-0.75, 5015'-0.75, 5620'-1.25

GENERAL DRILLING & PUMP INFORMATION:

Drilling with 10,000-16,000 lbs on bit and 80-90 RPM.

Drilling with 7 stands of collars (6.25"x2.25"): 429.16'

Pumping 58-65 S/M; 9.9-10.0 B/M; 900-1000 psi at standpipe.

Daily Status

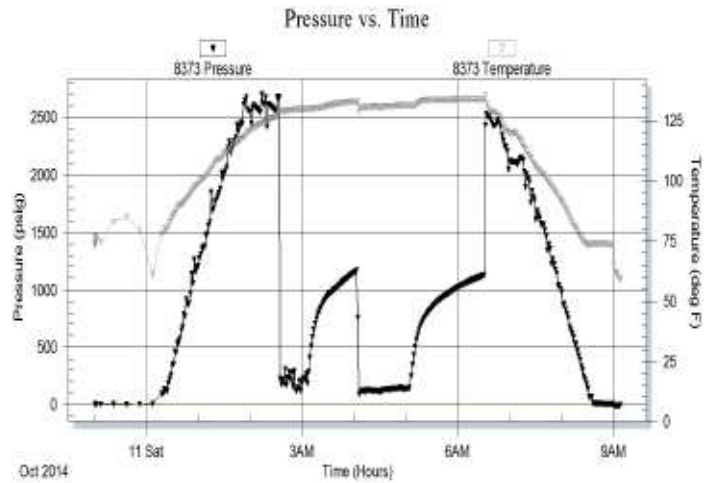
10/03/14 - Spud at 8:45 PM
 10/04/14 - 681' Drilling
 10/05/14 - 1,670' CTCH; Set 8-5/8" casing @ 1,665'
 10/06/14 - 1,732' Bit trip (pull tooth bit; insert PDC bit)
 10/07/14 - 3,450' Drilling
 10/08/14 - 4,677' Drilling; Bit trip @ 5,015'
 10/09/14 - 5,109' CFS
 10/10/14 - 5,620' CFS; Log well in PM
 10/11/14 - 5,620' TOH with DST #1; Plug well

DST #1: 5,320' - 5,620' (Upper Keyes)
 30" - 60" - 60" - 90"

IF: Good blow, building to BOB in 4 minutes
ISI: No blow back
FF: Good blow, building to BOB in 1 minute
FSI: No blow back

RECOVERY: 250' Total Fluid, consisting of:
 250' Mud (100% M)

SIP: 1148-1116; FP: 225-228, 118-144; HP: 2675-2502
BHT: 128



ROCK TYPES

	Anhy
	Bent
	Brec
	Cht
	Clyst
	Coal
	Congl
	Dol

	Gyp
	Igne
	Lmst
	Meta
	Mrlst
	Salt
	Shale
	Shcol

	Shgy
	Sltst
	Ss
	Till
	Carb sh
	Dol
	Dtd
	Gry sh

	Sandylms
	Shale
	Sltstn
	Shlyslts
	Sltlysh
	Lms

ACCESSORIES

MINERAL

- Anhy
- Arggrn
- Arg
- Bent
- Bit
- Brecfrag
- Calc
- Carb
- Chtdk
- Chtlt
- Dol
- Feldspar
- Ferrpel
- Ferr
- Glau
- Gyp
- Hvymin
- Kaol
- Marl
- Minxl
- Nodule
- Phos
- Pyr



- Salt
- Sandy
- Silt
- Sil
- Sulphur
- Tuff
- Chlorite
- Dol
- Sand
- Stly

FOSSIL

- Algae
- Amph
- Belm
- Bioclst
- Brach
- Bryozoa
- Cephal
- Coral
- Crin
- Echin
- Fish
- Foram



- Fossil
- Gastro
- Oolite
- Ostra
- Pelec
- Pellet
- Pisolite
- Plant
- Strom
- Fuss
- Oomold

STRINGER

- Anhy
- Arg
- Bent
- Coal
- Dol
- Gyp
- Ls
- Mrst
- Sltstrg
- Ssstrg
- Carbsh



- Clystn
- Dol
- Grysh
- Gryslt
- Lms
- Sandylms
- Sh
- Sltstn

TEXTURE

- Boundst
- Chalky
- Cryxln
- Earthy
- Finexln
- Grainst
- Lithogr
- Microxln
- Mudst
- Packst
- Wackest

OTHER SYMBOLS

POROSITY TYPE

- Earthy
- Fenest
- Fracture
- Inter
- Moldic
- Organic
- Pinpoint
- Vuggy

SORTING

- Well
- Moderate
- Poor

ROUNDING

- Rounded
- Subrnd
- Subang
- Angular

OIL SHOWS

- Even
- Spotted
- Ques
- Dead
- Gas show

INTERVALS

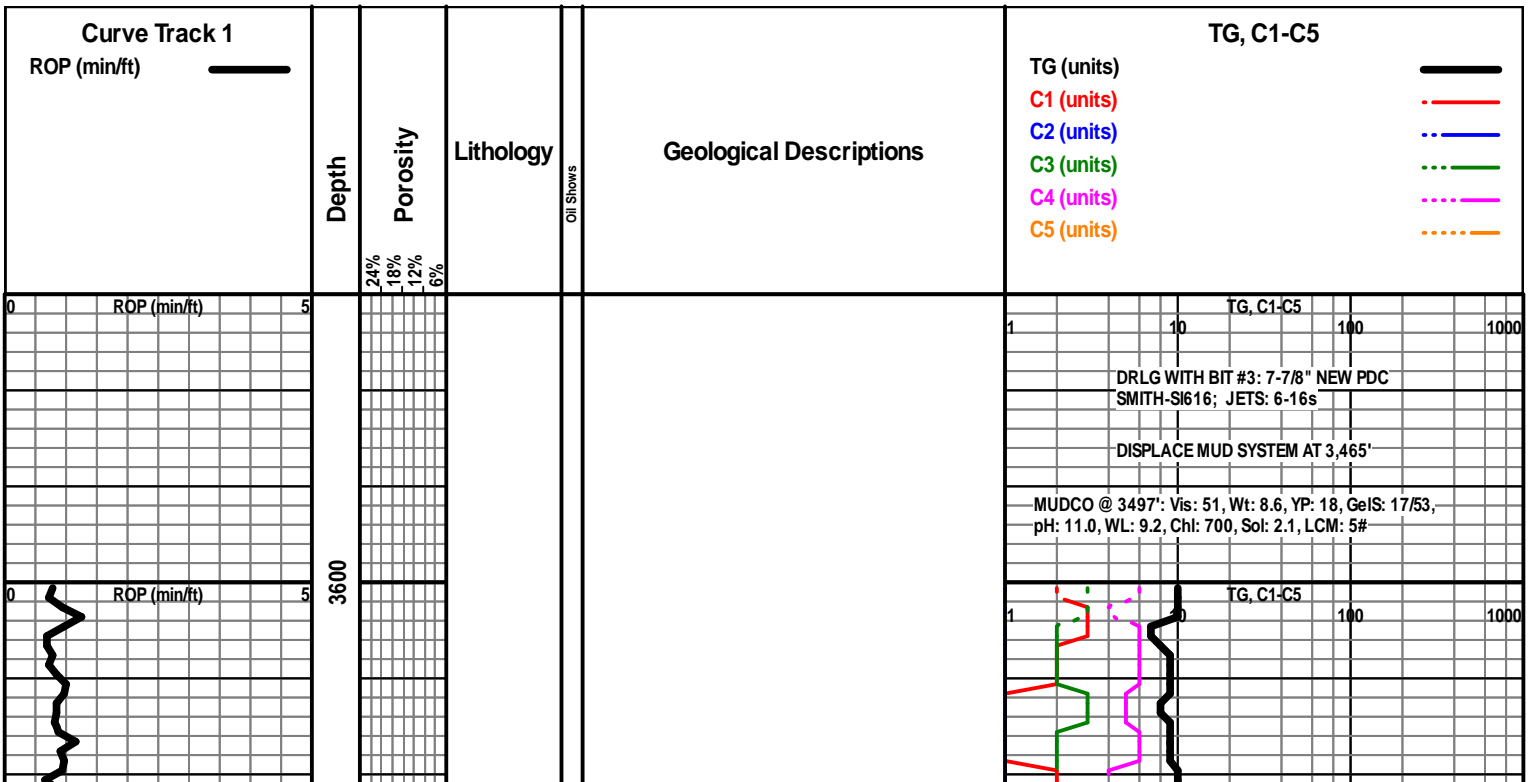
- Core
- Dst

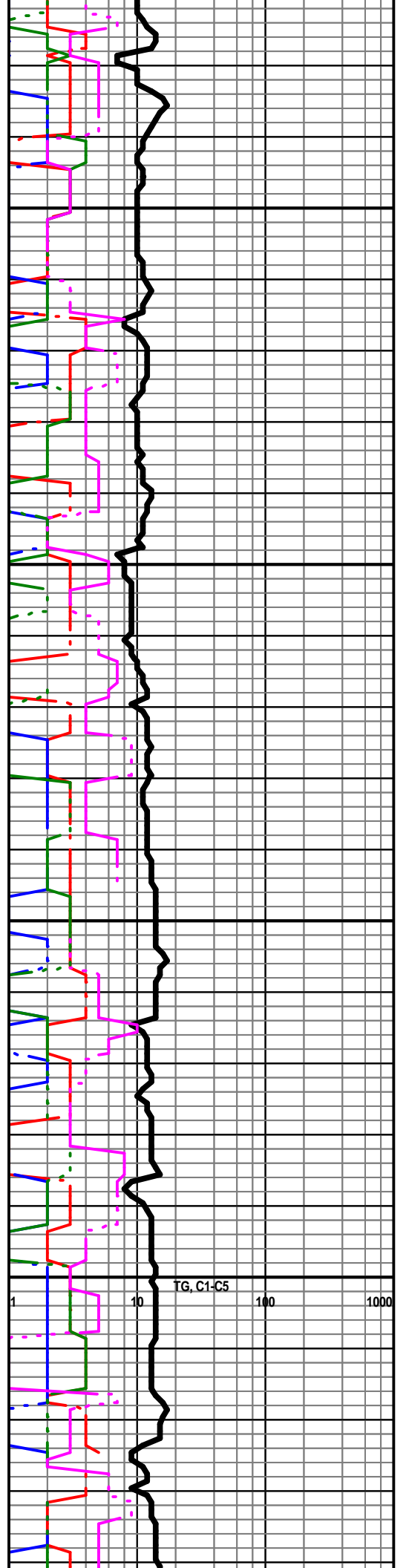
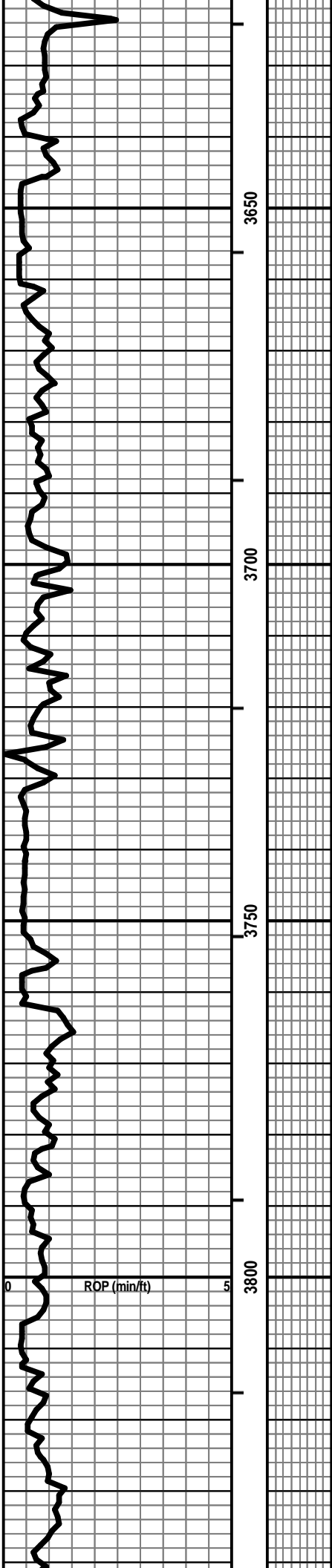


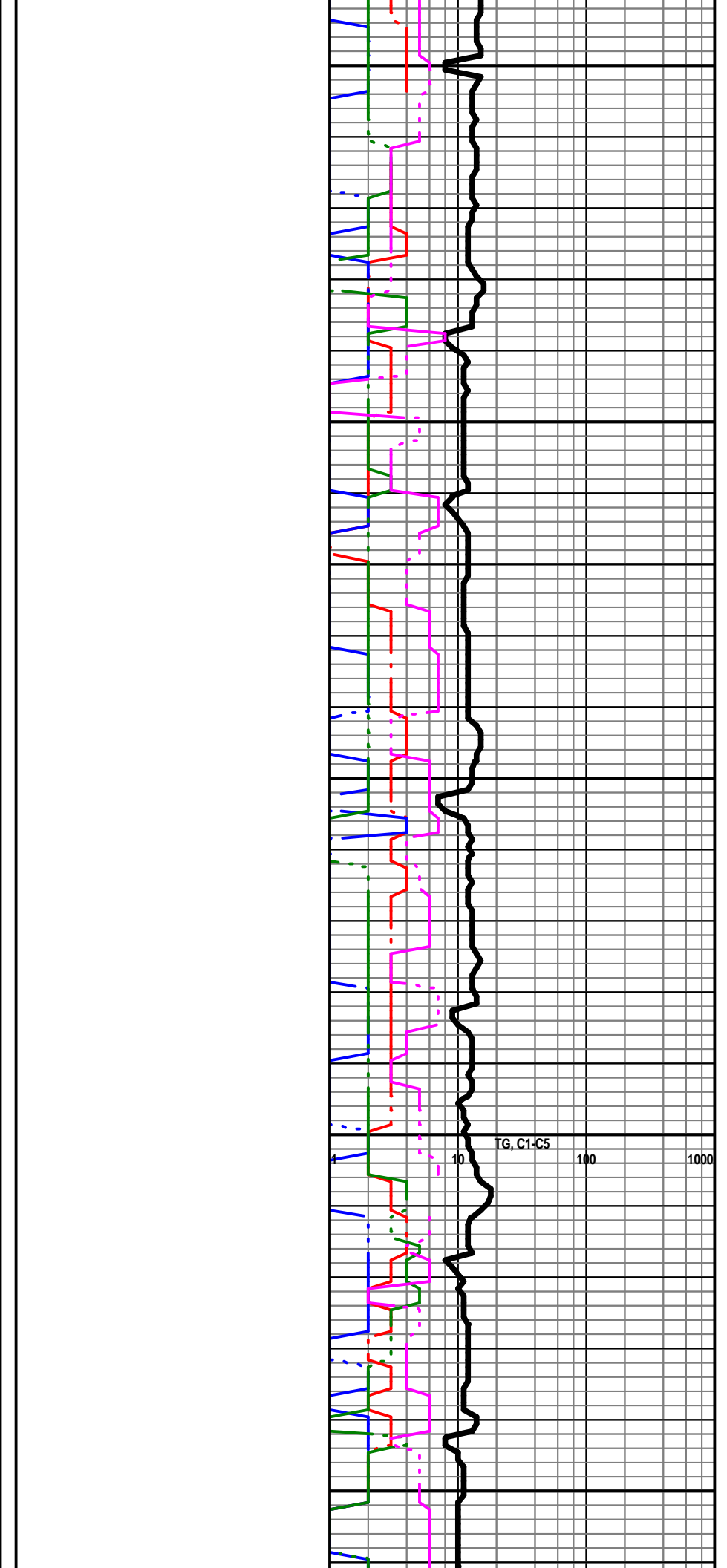
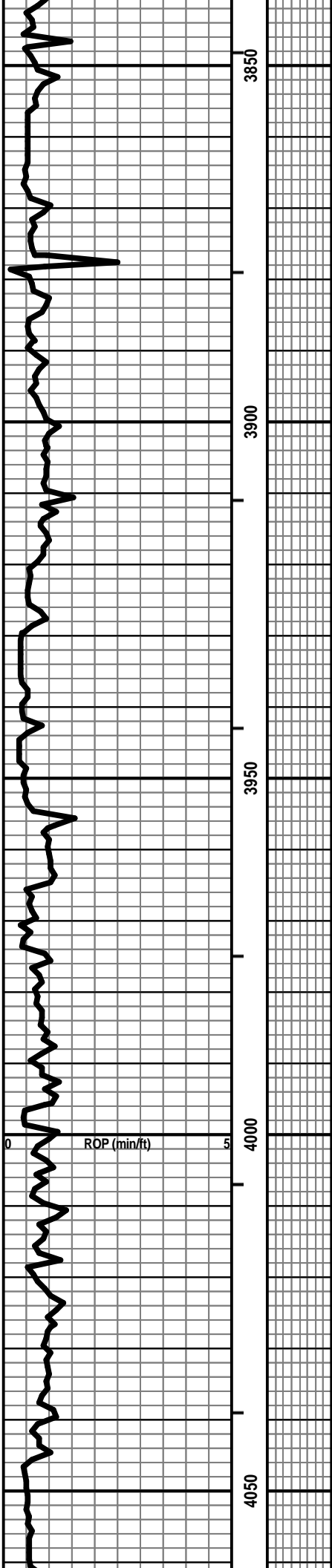
- Dst_1_t
- Dst_1_b
- Dst

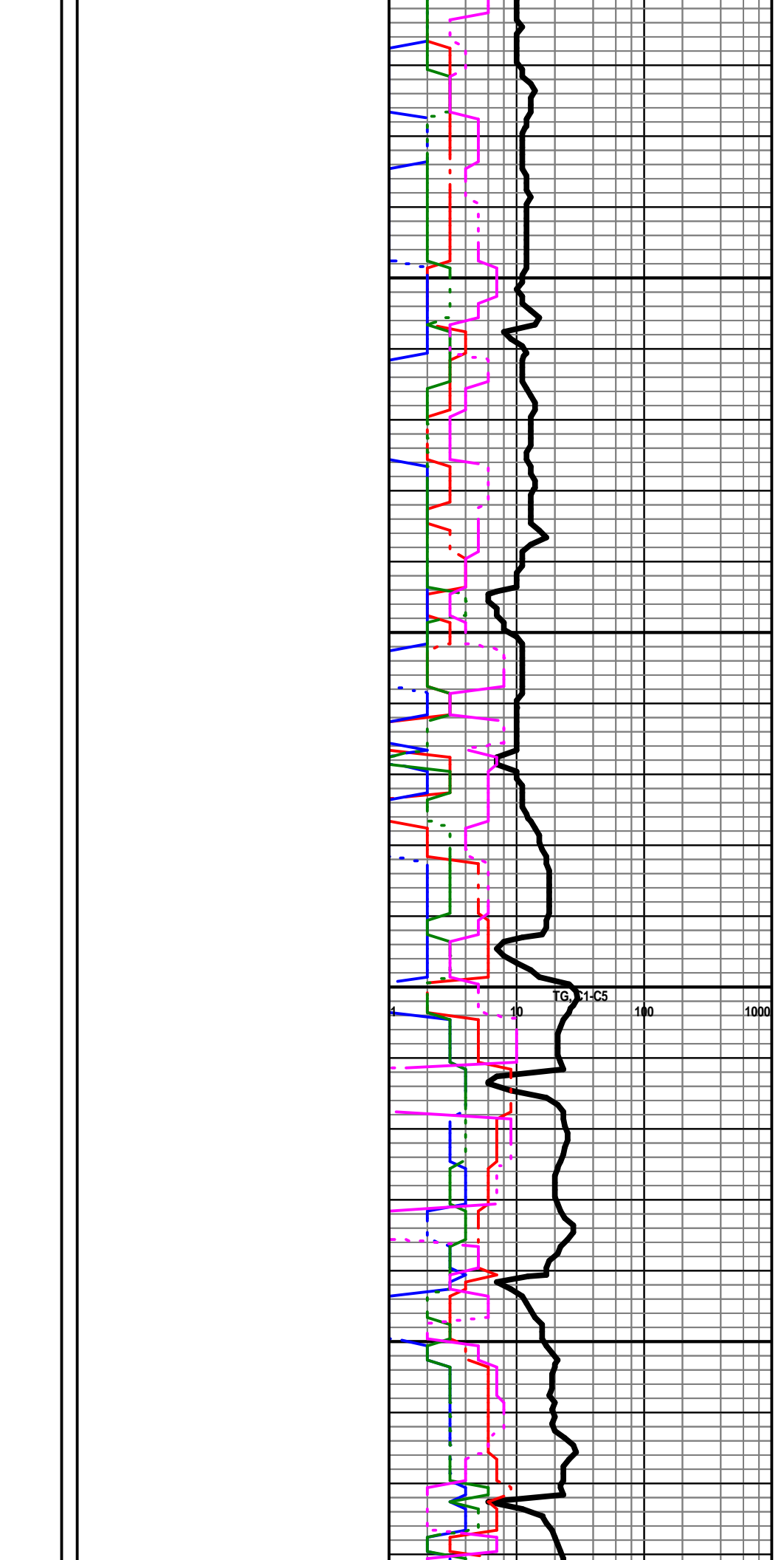
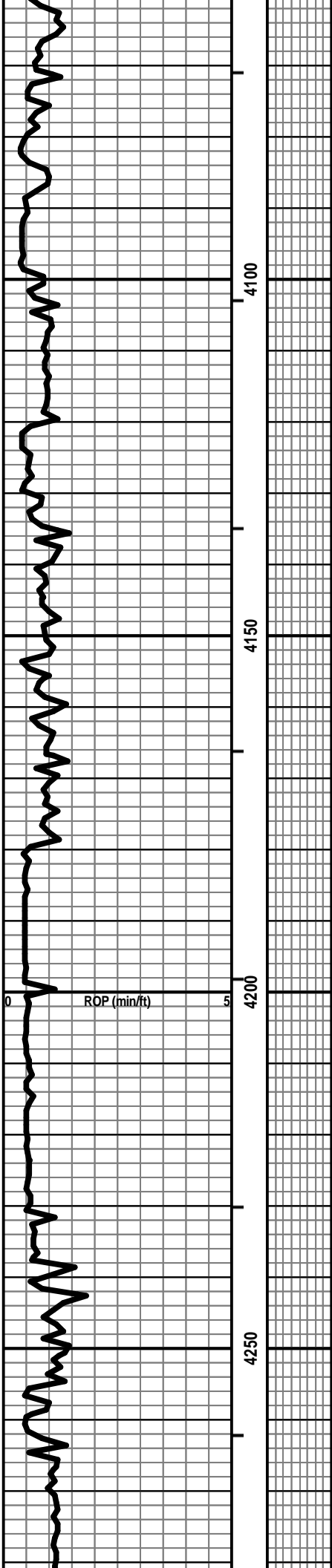
EVENTS

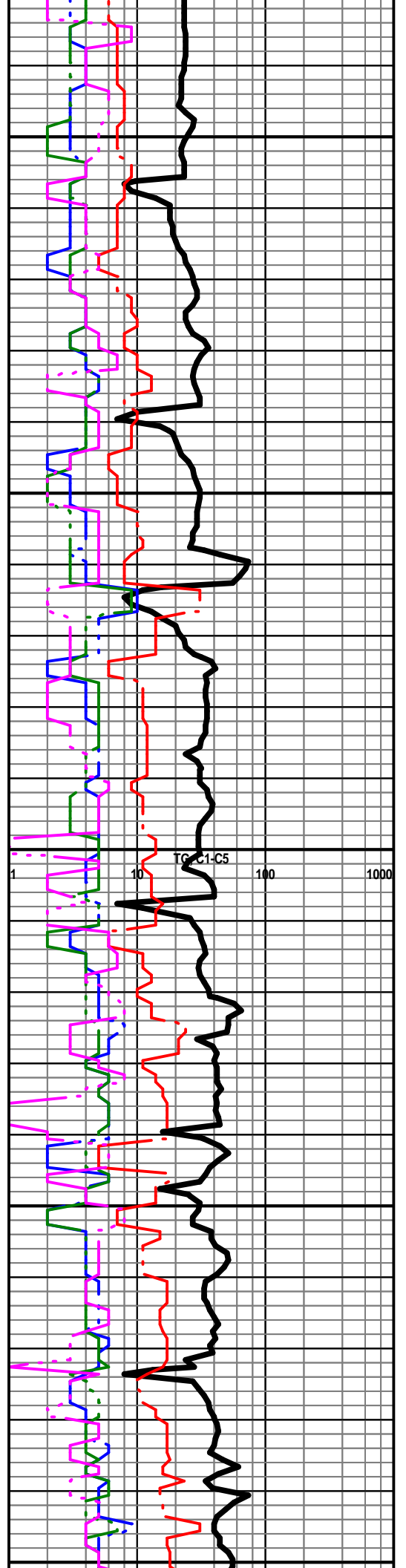
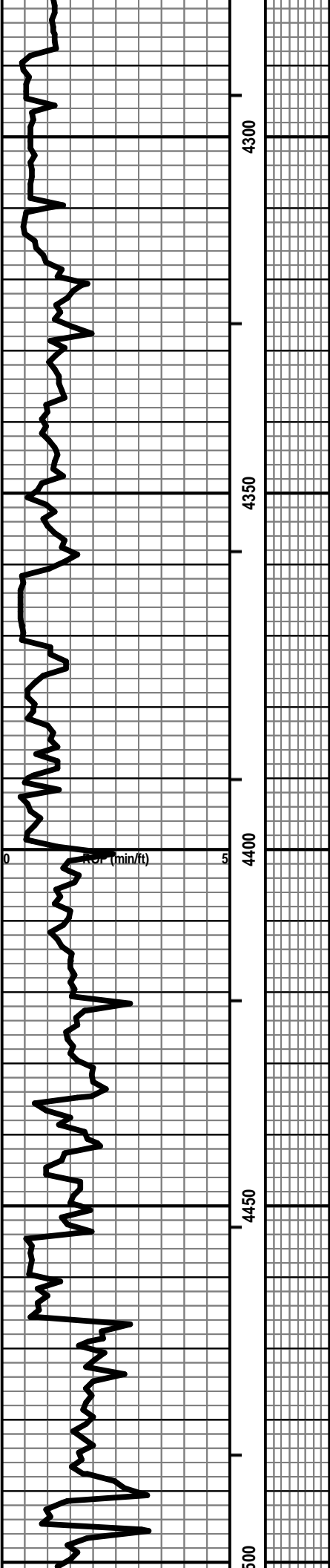
- Rft
- Sidewall
- Conn

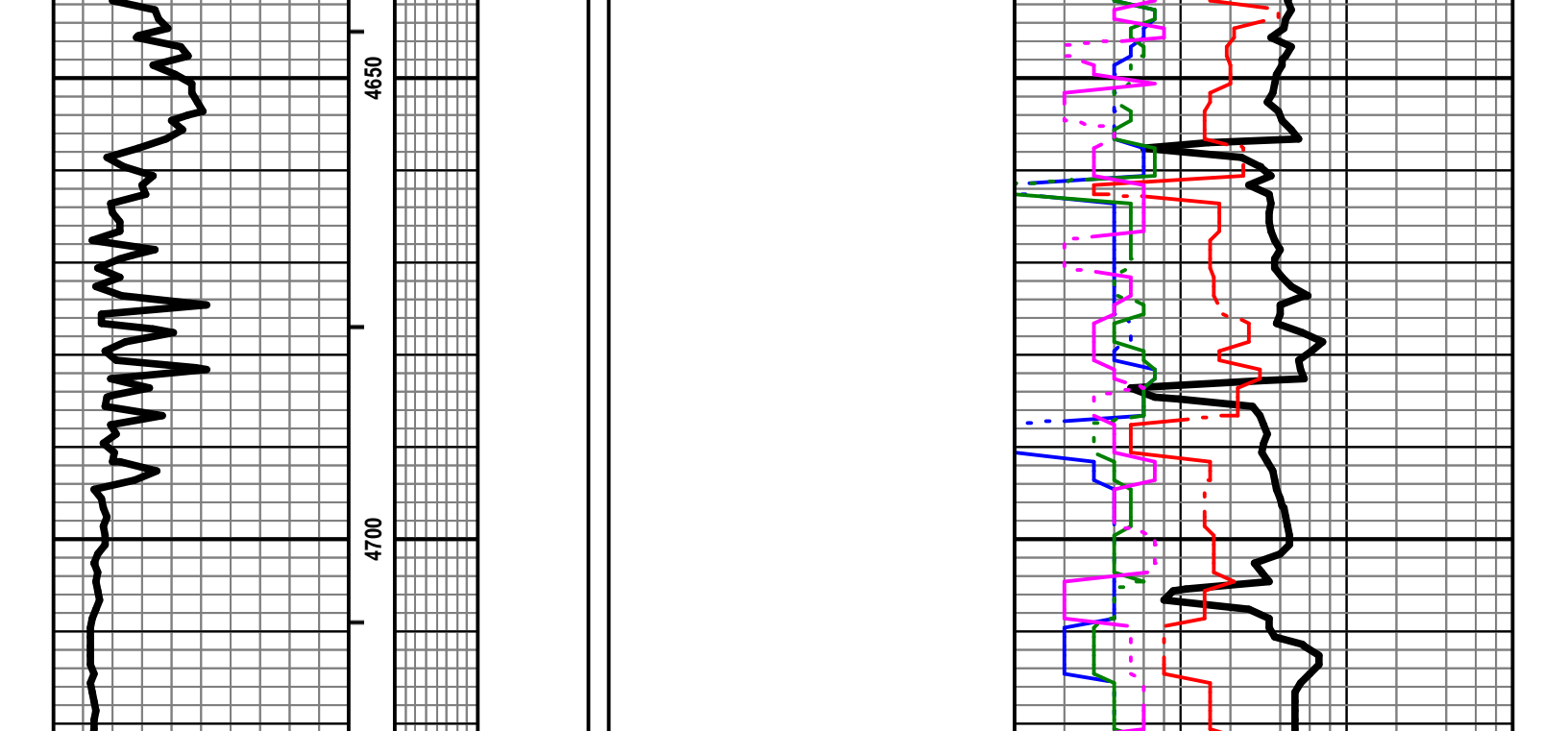
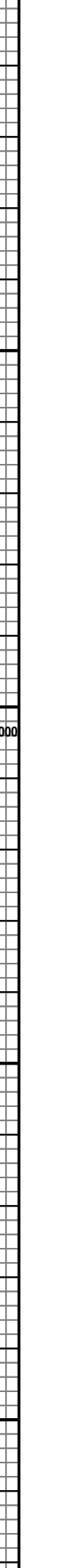
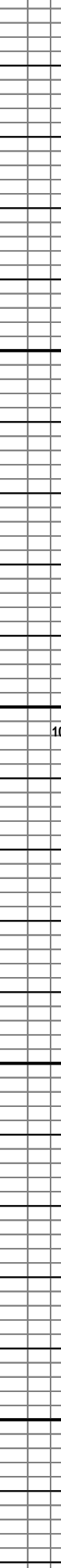
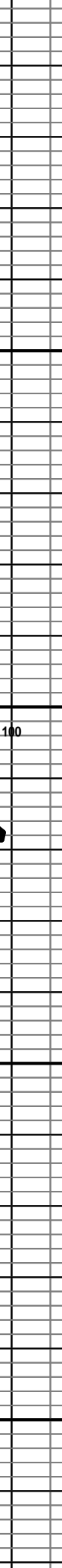
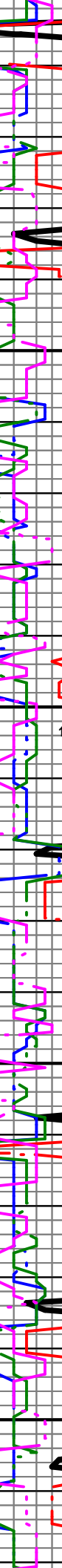
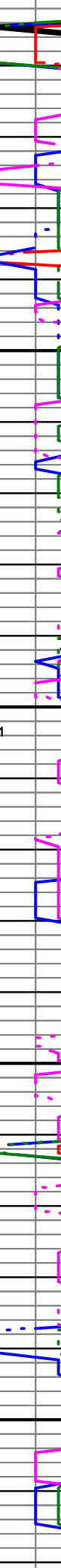
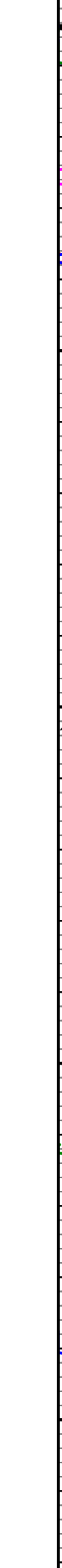
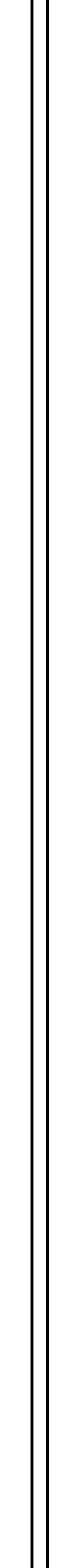
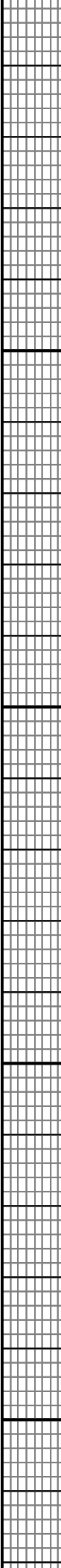
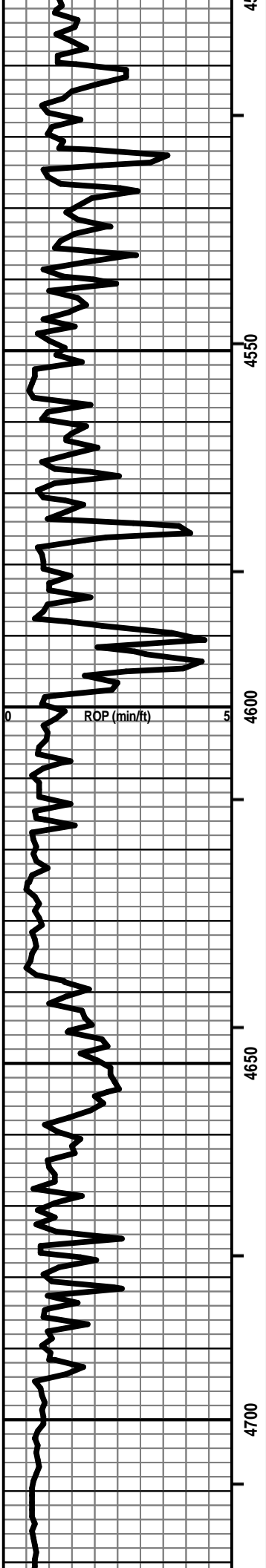


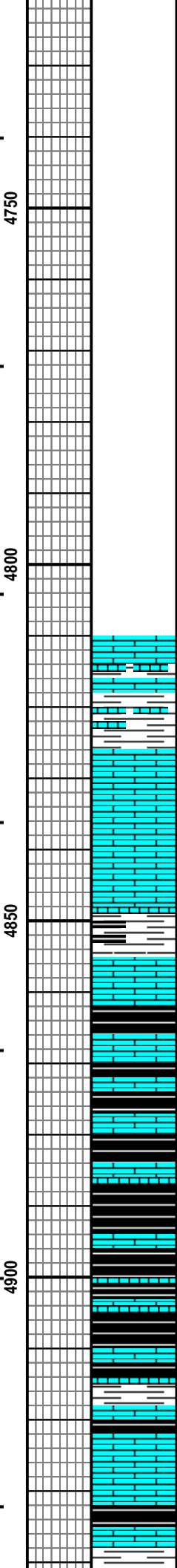
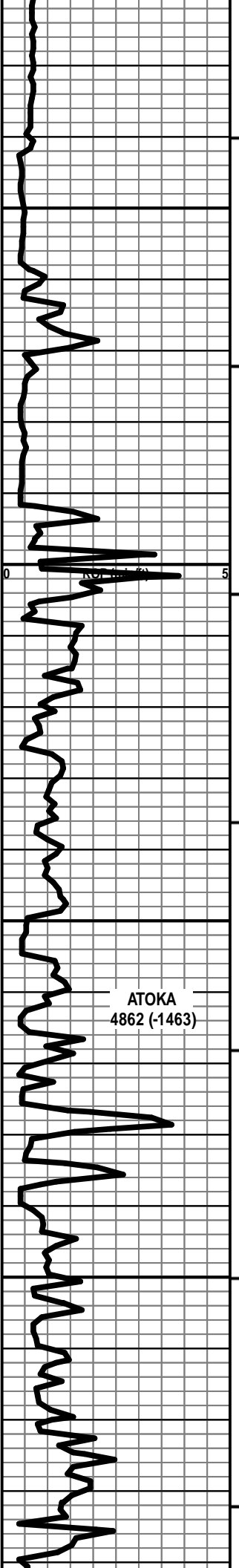












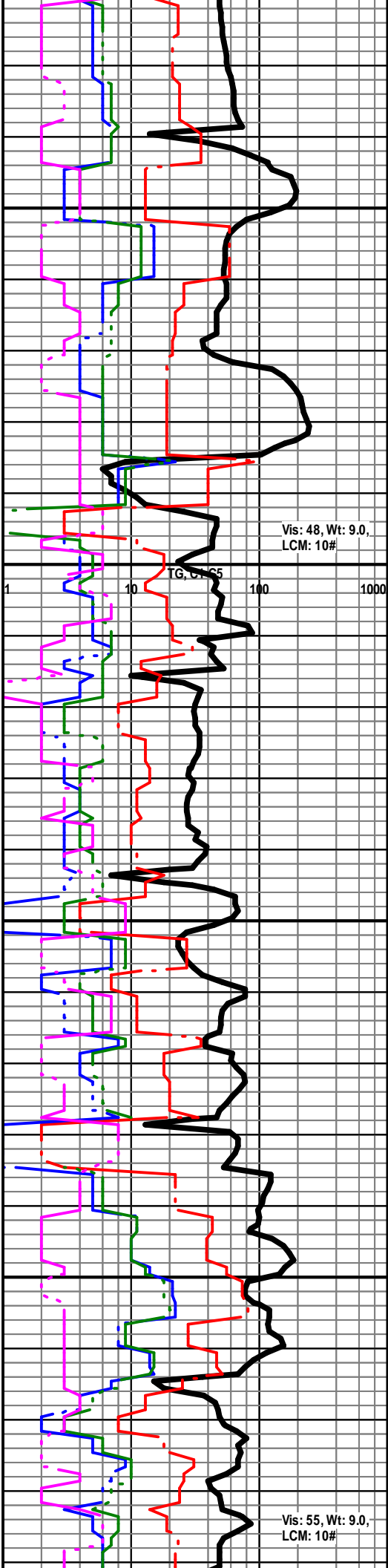
LS - MED / DK GY / TAN / BRN, VF / F XLN, SCAT OOL,
SCAT SUBCHKY, PRED DNS, NS W/SH - GY/BLK

LS - LT / MED GY, VF / SCAT F XLN, SUBCHKY / CHKY IN
PT, PRED DNS, NS W/SH - GY / BLK, CARB IN PT

LS - LT / MED GY / TAN / SCAT BRN, VF / F XLN,
SUBCHKY IN PT / DNS, NS W/SH - BLK, CARB

LS - TAN / GY / SCAT BRN, VF / F XLN, SL FOSS IN PT,
DNS / SUBCHKY, NS W/SH - DK GY / BLK, CARB

LS - TAN / GY / BRN, VF / F XLN, SL FOSS IN PT, SCAT
SUBCHKY, PRED DNS, NS W/SH - DK GY / BLK, CARB
IN PT



Vis: 48, Wt: 9.0,
LCM: 10#

TG, C, 0.05

Vis: 55, Wt: 9.0,
LCM: 10#

ATOKA
4862 (-1463)

4750

4800

4850

4900

1 10 100 1000

MORROW SH
4949 (-1550)

4950

LS - TAN / BRN / GY, MOT IN PT, VF / F XLN, SCAT AREN,
PRED DNS, NS W/TR CHT - LT GY / CRM W/SH - GY /
BLK, CARB

LS - TAN / BRN, VF / F / SCAT M XLN, SL FOSS IN PT,
PRED DNS, NS W/SH - DK GY / BLK

SH - DK GY / BLK W/SCAT LS - AS ABOVE W/TR
COAL W/TR PYR

SH - MED / DK GY / BLK

SH - MED / DK GY / BLK W/TR SLTST - LT / MED GY

MID MRW SS
5078 (-1679)

5100

SS - LT GY, SLT / VF QTZ GR, W SRD, SA / SR, PRED
SL / SL CALC CEM, MIC, P / F INTGR POR, SCAT G POR,
SL / MOD FRI IN PT, SL / G SGB, NO ODOR, NO FLUOR,
NO CUT

SH - DK GY / BLK W/SS - AS ABOVE

CFS @ 5109'

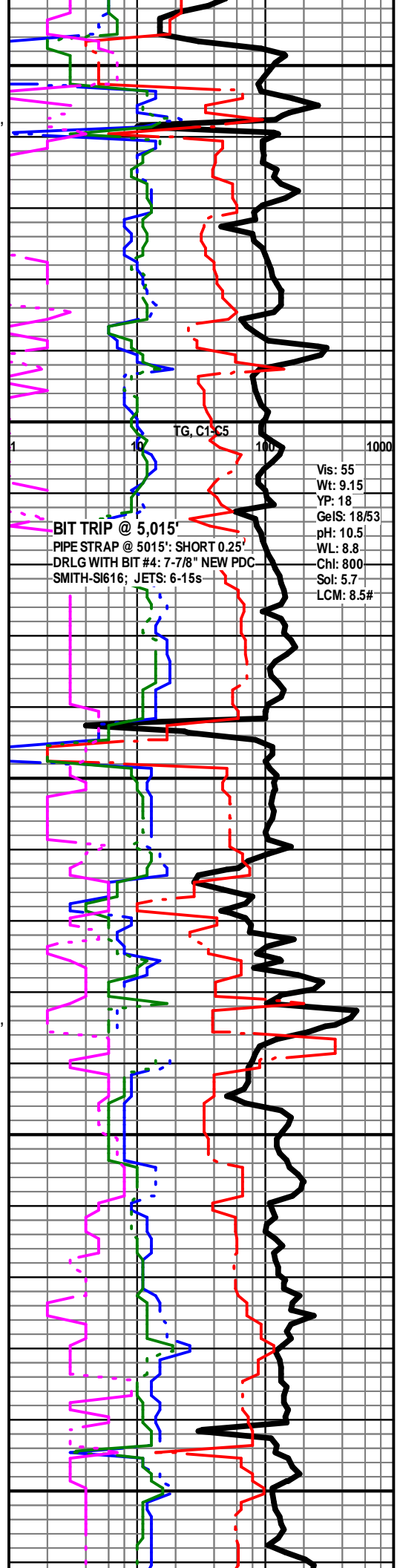
5100

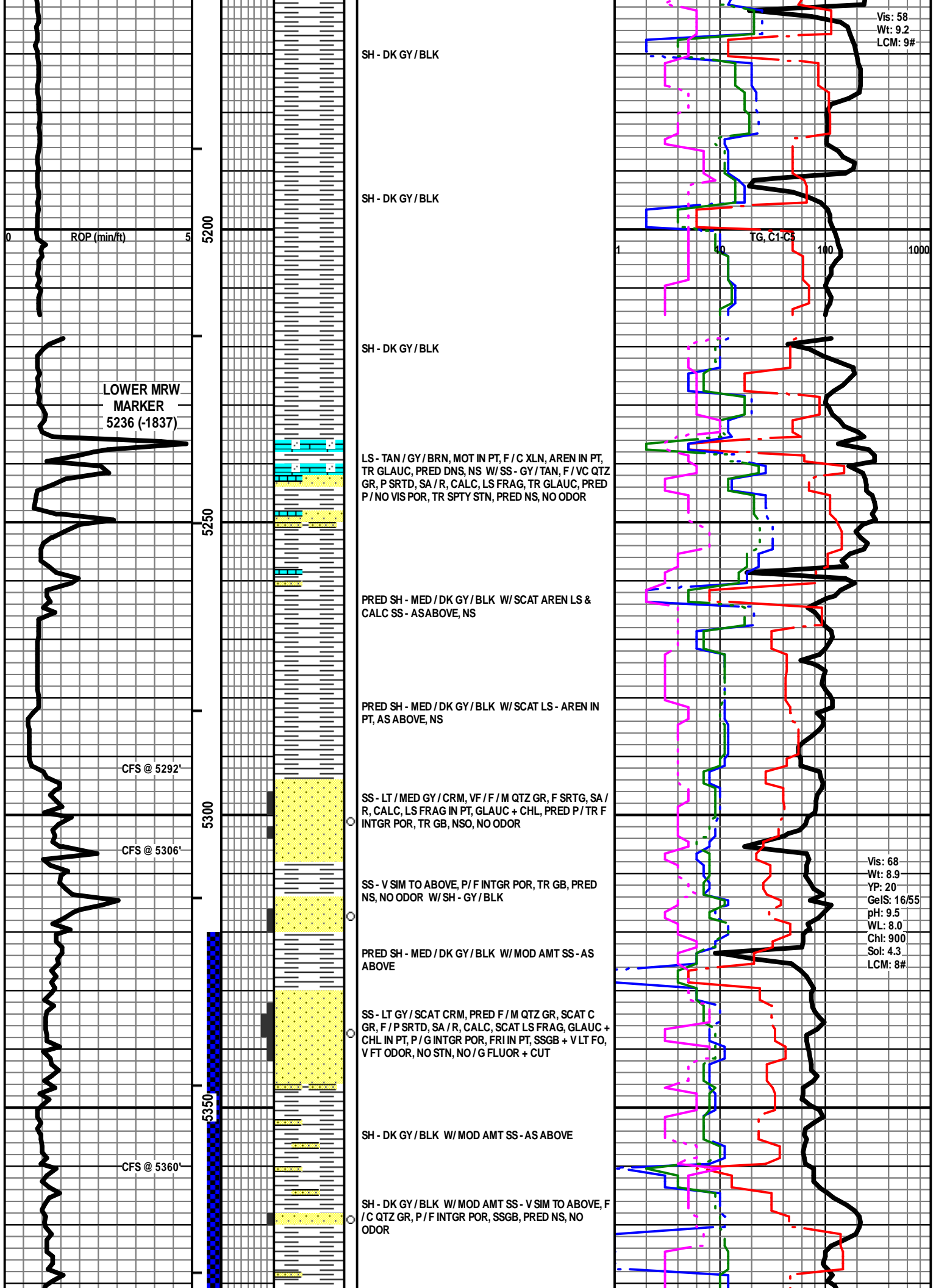
SH - DK GY / BLK W/SCAT SS - AS ABOVE W/SCAT
SLTST - LT / MED GY

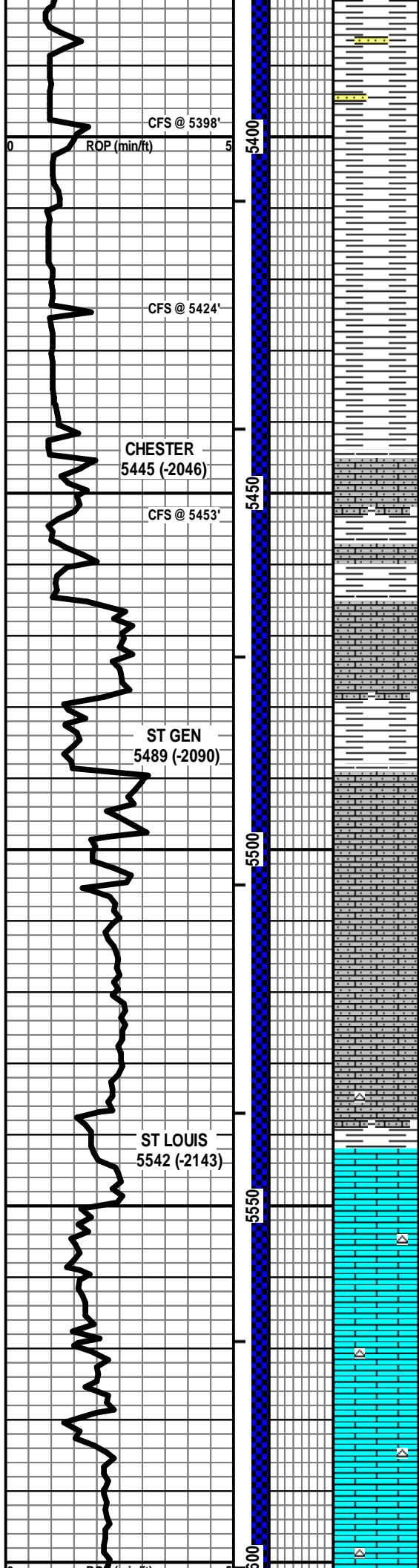
SH - DK GY / BLK W/SCAT SLTST - LT / MED GY

5150

LS - TAN / BRN / GY, F / SCAT M XLN, SL FOSS, TR
AREN, PRED DNS, NS W/SH - DK GY / BLK







SH - DK GY / BLK W/ SCAT SS - GRN / SCAT GY, VF QTZ GR, W SRTD, SCAT GLAUC, NO VIS POR, NS W/ SS CAVINGS - AS ABOVE

PRED SH - DK GY / BLK

PRED SH - DK GY / BLK

PRED SH - DK GY / BLK

LS - TAN / RED / GY, VF XLN, AREN, VF QTZ GR, SUBCHKY IN PT, PRED DNS, NS

LS - TAN / RED / GY, VF XLN, AREN, VF QTZ GR, SUBCHKY IN PT, PRED DNS, NS

LS - TAN / RED / GY / WHT / SCAT CRM, VF XLN, AREN, VF QTZ GR, SUBCHKY IN PT, PRED DNS, NS

LS - CRM / WHT, VF XLN, AREN, VF QTZ GR, FNLY OOL IN PT, SUBCHKY IN PT, PRED DNS, NS

LS - CRM / WHT, VF XLN, AREN, VF QTZ GR, FNLY OOL IN PT, SUBCHKY IN PT, PRED DNS, NS

LS - CRM / WHT, VF XLN, AREN, VF QTZ GR, FNLY OOL IN PT, SUBCHKY IN PT, PRED DNS, NS W/ TR CHT - ORG

LS - CRM / GY, VF / F XLN, SL FOSS + OOL, SCAT SUBCHKY, PRED DNS, NS W/ TR CHT - ORG

LS - CRM / GY, VF / F XLN, OOL IN PT, TR P / PRED NO VIS POR, CHKY IN PT, NS W/ SCAT CHT - LT GY / CRM

LS - AS ABOVE, SCAT FOSS + OOL, SUBCHKY IN PT, PRED DNS, NS W/ SCAT CHT - LT GY / CRM / TAN

TG, C1-C5

DST #1: 5,320'-5,620' (Upper Keyes)
30" - 60" - 60" - 90"

IF: Good blow, bldg to BOB in 4 min.
IS: No blow back

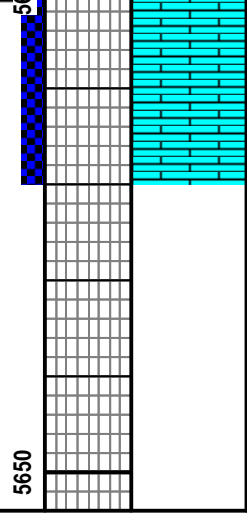
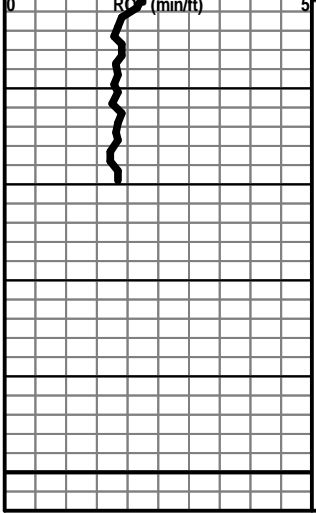
FF: Good blow, bldg to BOB in 1 min.
FSI: No blow back

RECOVERY: 250' Total Fluid:
250' Mud (100% M)

SIP: 1148-1116 HP: 2675-2502
FP: 225-228, 118-144 BHT: 128

Vis: 54
Wt: 9.2
LCM: 8#

Vis: 50
Wt: 9.25
YP: 17
GelS: 17/52
pH: 9.5
WL: 9.2
Chl: 1,100
Sol: 6.4
LCM: 8#



LS - CRM / GY, VF / F XLN, TR OOL + FOSS, SUBCHKY
IN PT, PRED DNS, NS W/ TR CHT - AS ABOVE

TOTAL DEPTH 5620 (-2221)

