



TRILOBITE TESTING, INC.

DRILL STEM TEST REPORT

King Production Service, Inc.

5-1s-36w Rawlins, KS

502 E 7th Ave
Yuma CO 80759

Vernice #15-5

Job Ticket: 60934

DST#: 1

ATTN: Bob Hopkins

Test Start: 2014.10.02 @ 00:30:00

GENERAL INFORMATION:

Formation: **Oread**

Deviated: No Whipstock: ft (KB)

Time Tool Opened: 04:01:45

Time Test Ended: 08:07:45

Test Type: Conventional Bottom Hole (Initial)

Tester: Brett Dickinson

Unit No: 59

Interval: **3868.00 ft (KB) To 3915.00 ft (KB) (TVD)**

Total Depth: 3915.00 ft (KB) (TVD)

Hole Diameter: 7.88 inches Hole Condition: Fair

Reference Elevations: 3088.00 ft (KB)

3076.00 ft (CF)

KB to GR/CF: 12.00 ft

Serial #: 8934

Inside

Press@RunDepth: 27.31 psig @ 3869.00 ft (KB)

Capacity: 8000.00 psig

Start Date: 2014.10.02 End Date: 2014.10.02

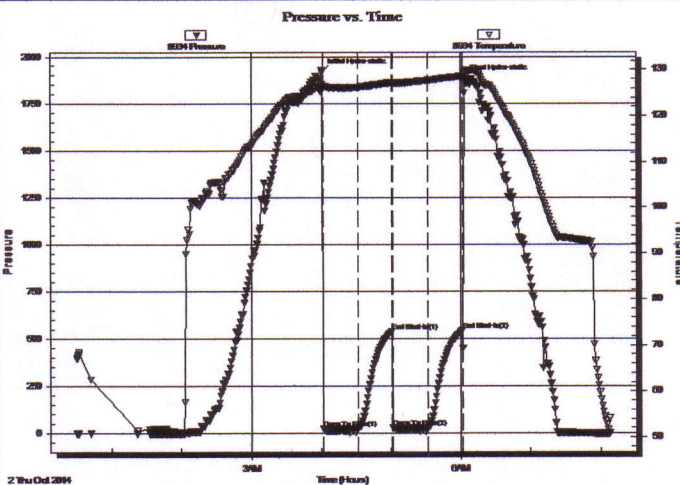
Last Calib.: 2014.10.02

Start Time: 00:30:05 End Time: 08:07:44

Time On Btm: 2014.10.02 @ 04:01:00

Time Off Btm: 2014.10.02 @ 06:03:15

TEST COMMENT: IF-1/4" blow died in 25 min
ISI-No blow
FF-No blow
FSI-No blow



PRESSURE SUMMARY

Time (Min.)	Pressure (psig)	Temp (deg F)	Annotation
0	1916.43	126.85	Initial Hydro-static
1	24.02	126.26	Open To Flow (1)
31	23.58	126.15	Shut-In(1)
60	542.15	127.07	End Shut-In(1)
61	27.85	127.02	Open To Flow (2)
91	27.31	127.58	Shut-In(2)
120	544.38	128.57	End Shut-In(2)
123	1881.57	129.37	Final Hydro-static

Recovery

Length (ft)	Description	Volume (bbl)
30.00	Mud	0.15

Gas Rates

Choke (inches)	Pressure (psig)	Gas Rate (Mcf/d)