



TRILOBITE TESTING, INC

DRILL STEM TEST REPORT

King Production Service, Inc.

5-1-36, Rawlins, KS

502 E 7th Ave
Yuma CO 80759

Vernice #15-5

Job Ticket: 60935

DST#: 2

ATTN: Bob Hopkins

Test Start: 2014.10.02 @ 22:30:00

GENERAL INFORMATION:

Formation: **KC "A-B"**

Deviated: No Whipstock: ft (KB)

Time Tool Opened: 01:07:00

Time Test Ended: 06:57:30

Test Type: Conventional Bottom Hole (Reset)

Tester: Brett Dickinson

Unit No: 59

Interval: **3985.00 ft (KB) To 4060.00 ft (KB) (TVD)**

Total Depth: 4060.00 ft (KB) (TVD)

Hole Diameter: 7.88 inches Hole Condition: Fair

Reference Elevations: 3088.00 ft (KB)

3076.00 ft (CF)

KB to GRV/CF: 12.00 ft

Serial #: 8934

Inside

Press@RunDepth: 525.89 psig @ 3986.00 ft (KB)

Start Date: 2014.10.02

End Date: 2014.10.03

Capacity: 8000.00 psig

Last Calib.: 2014.10.03

Start Time: 22:30:00

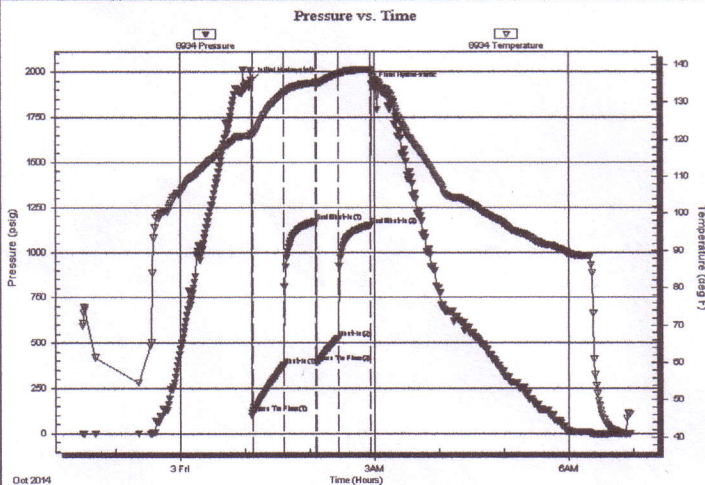
End Time: 06:57:30

Time On Btm: 2014.10.03 @ 01:06:15

Time Off Btm: 2014.10.03 @ 02:58:30

TEST COMMENT: IF-BOB in 2min
IS-BOB in 13min
FF-BOB in 2min
FSI-4in blow

PRESSURE SUMMARY



Time (Min.)	Pressure (psig)	Temp (deg F)	Annotation
0	1951.51	121.56	Initial Hydro-static
1	114.28	121.47	Open To Flow (1)
30	377.05	132.51	Shut-In(1)
60	1171.94	135.26	End Shut-In(1)
61	389.71	135.06	Open To Flow (2)
81	525.89	137.60	Shut-In(2)
111	1150.57	138.78	End Shut-In(2)
113	1924.20	136.82	Final Hydro-static

Recovery

Length (ft)	Description	Volume (bbl)
180.00	GMCO 20%G 60%O 20%M	0.89
1330.00	GO 25%G 75%O	17.97

* Recovery from multiple tests

Gas Rates

Choke (inches)	Pressure (psig)	Gas Rate (Mcf/d)